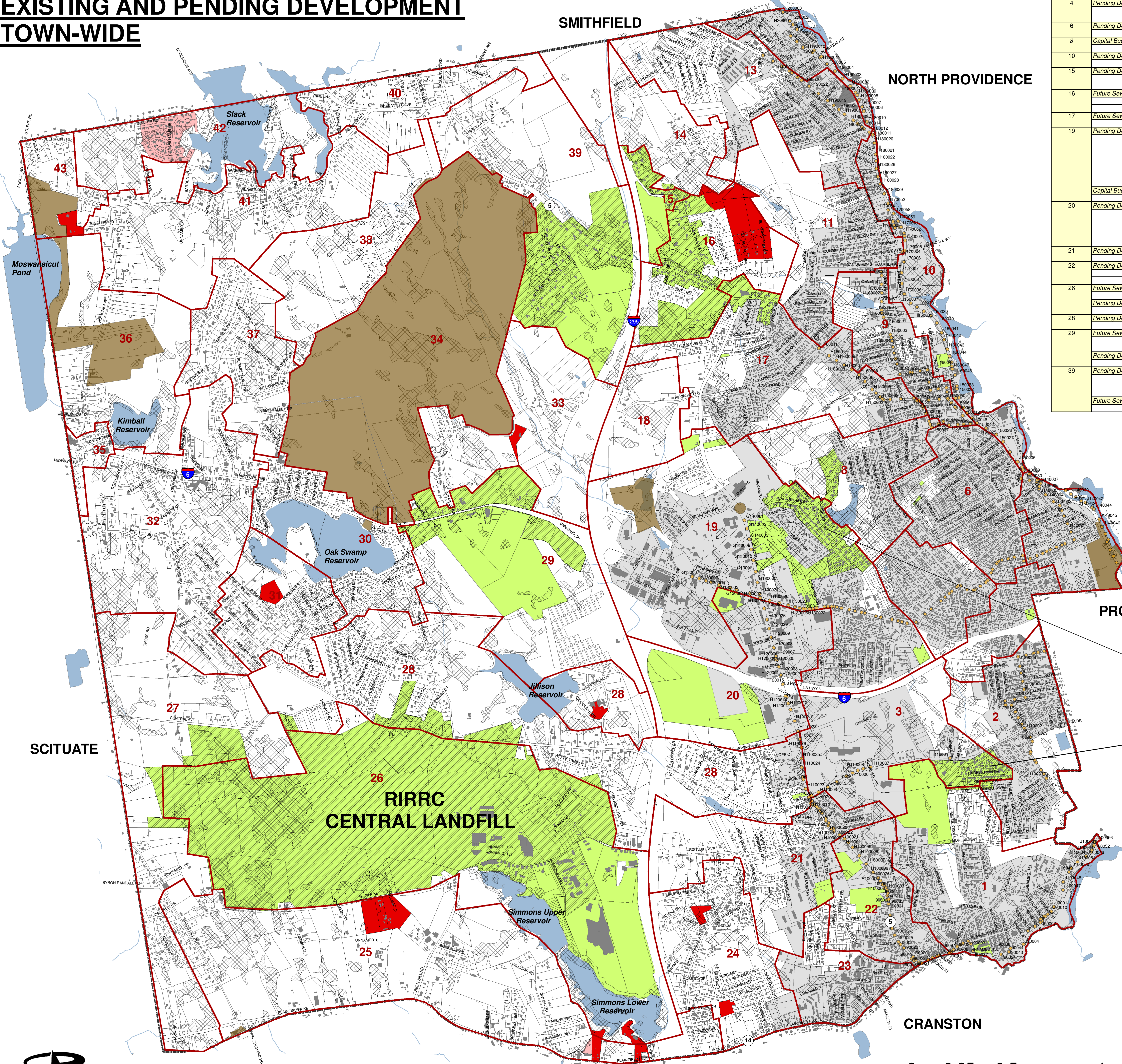


# MAP 1: 0 - 5 YEAR PLANNING HORIZON

## SEWER EXPANSION TO EXISTING AND PENDING DEVELOPMENT TOWN-WIDE



Sewershed	Development Type	GIS Identification	Buildout			Planning District
			Residential	Business	Condominium	
1	Pending Development East	FM Global		350,000 SF		2
		Pocasset Mills	91 Multi-Family (51 2-bed/40 1-bed)			3
3	Capital Budget Program	Memorial Plat	115			2
4	Pending Development East	Killingly Place		Bus. Dev. Project 35,500 SF		2
6	Pending Development East	Rosemont/Elmhurst	1			2
8	Capital Budget Program	Cherry Hill B	17			2
10	Pending Development East	Trons Avenue			22 (commercial)	1
15	Pending Development East	Killian Estates	50 senior apt. (25 1-bed/25 2-bed)			1
16	Future Sewers to Existing Development	ID 2	30			1,4
		ID 10	18			1,4
17	Future Sewers to Existing Development	ID 3	18	2		1,4
19	Pending Development East	Centre at Cherry Hill	55	(Mixed-use retail/resid./ (comm./office) 20,000 SF Office)		2
		US Immigration Center				2
		Maceroni & Sons Fun. Home	34			2
		Rustic View		1		2
		Cherry Hill A	28 Multi-Family			2
20	Capital Budget Program	Cherry Hill A	164			2
21	Pending Development East	Stuarts Plaza		(Hotel/Restaurant/Retail)		2
		Stonehill Marketplace		(Wholesale Club - 121,324 SF) (Webster Bank/Aspen Dental - 3,452 SF/ 8-10 chairs/Sleepy's - 6,978 SF) (2 +/- more bldgs. - unknown)		4
22	Pending Development East	Rockcrest	10			3
26	Future Sewers to Existing Development	Cassidy	8			3
		Falcon Nest	17			3
28	Pending Development West	RIRRC		(Industrial)		4
		Lakeside Commerce Center		(Industrial)		3
29	Future Sewers to Existing Development	Mangiarelli's	1			4
		ID 6	5	4		4
		ID 5	4			4
39	Pending Development West	Johnston Commons				4
39	Future Sewers to Existing Development	Pines Condominiums	144	(112 3-bed/32 2-bed)		4
		Poppy Hills	9			4
		ID 8	65			4

- LEGEND**
- 24 SEWERSHED NUMBER
  - SEWERSHED DELINEATION
  - WETLANDS
  - PROTECTED OPEN SPACE
  - SEWERED AREAS THAT CONTRIBUTE TO JOHNSTON SEWER
  - UNSEWERED AREAS
  - POTENTIAL DEVELOPMENT AREAS THAT WILL DISCHARGE TO JOHNSTON
  - FUTURE JOHNSTON SEWERS TO EXISTING DEVELOPMENT
  - SEWERED AREAS THAT DO NOT DISCHARGE TO JOHNSTON
  - PENDING DEVELOPMENT THAT WILL NOT DISCHARGE TO JOHNSTON
  - NBC ACTIVE MANHOLES
  - WATERBODIES

