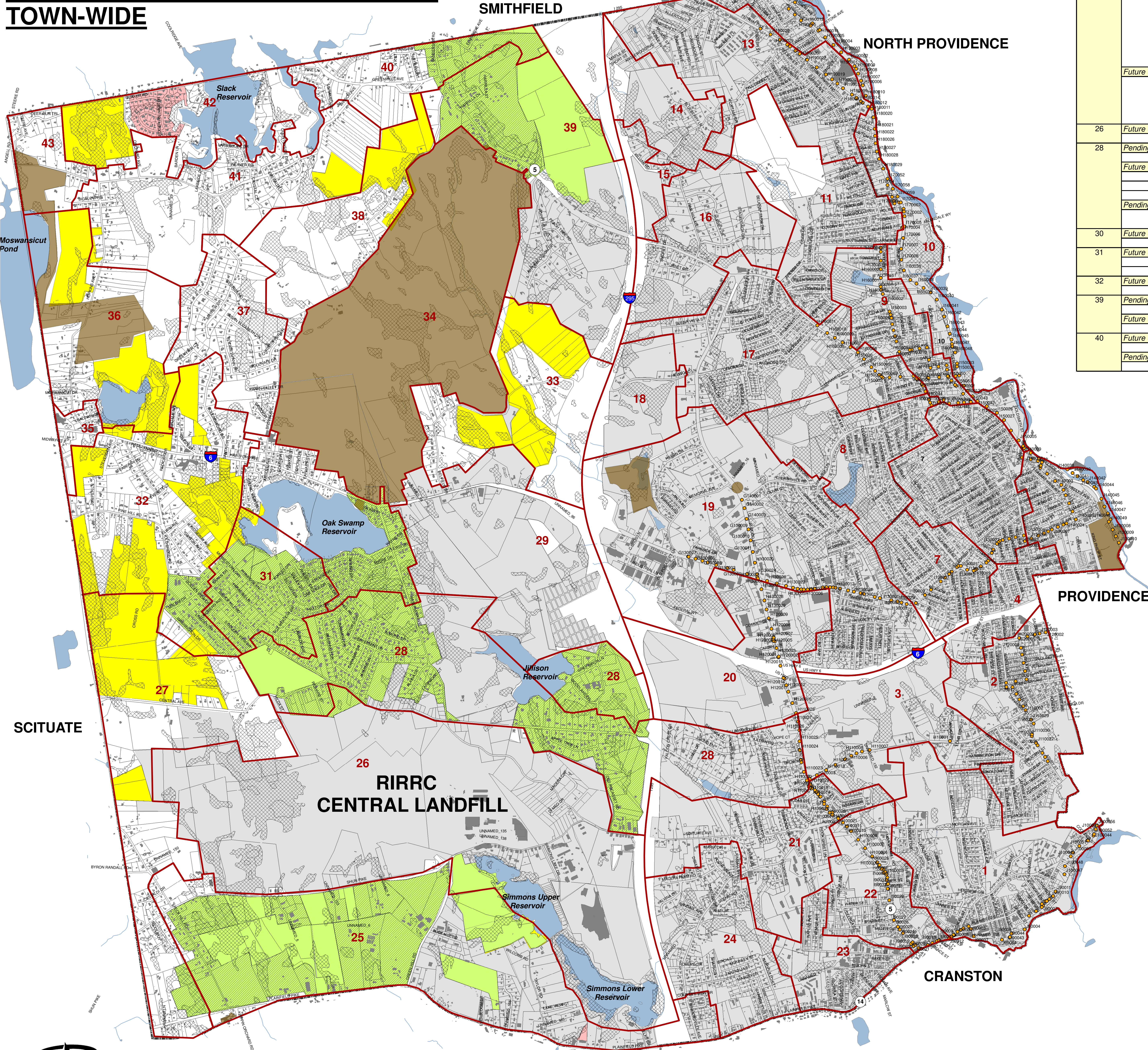


MAP 3: 10 - 20 YEAR PLANNING HORIZON

SEWER EXPANSION TO EXISTING AND INFILL DEVELOPMENT TOWN-WIDE



10 - 20 Yr Buildout						
Sewershed	Development Type	GIS Identification	Residential	Buildout Business	Condo.	Planning District
25	Pending Development West					
		ID 33	27			3
		ID 44	18			3
		ID 50	19			3
		ID 51	25			3
		ID 70	7			4
		ID 71			1,059,188 SF (Industrial)	4
		ID 72			640,405 SF (Industrial - Light)	4
		ID 73			208,996 SF (Industrial)	4
		Future Sewers to Existing Development				
	Shun Pike/Vinagro ID 60					
		ID 9	29	3		4
		ID 8		4		4
		ID 7		2		4
		ID 6		16		4
26	Future Sewers to Existing Development					
		ID 18		1		4
28	Pending Development West					
		ID 39	37			4
	Future Sewers to Existing Development					
		ID 17	210			4
		ID 13	17		2	4
	ID 14	62		5	4	
Pending Development West no Discharge Johnston						
	Briarcliff (Assisted Living Fac.)					
30	Future Sewers to Existing Development					
		ID 19	109			4
31	Future Sewers to Existing Development					
		ID 16	244			4
32	Future Sewers to Existing Development					
		Boulder Drive Estates	8			4
39	Future Sewers to Existing Development					
		ID 15	52			4
	Pending Development West					
		ID 55	12			4
40	Future Sewers to Existing Development					
		ID 25	23	10		1
	Pending Development West					
		ID 26	15	3		1
		ID 56	0			4

- LEGEND**
- 24 SEWERSHED NUMBER
 - SEWERSHED DELINEATION
 - WETLANDS
 - PROTECTED OPEN SPACE
 - SEWERED AREAS THAT CONTRIBUTE TO JOHNSTON SEWER
 - UNSEWERED AREAS
 - POTENTIAL DEVELOPMENT AREAS THAT WILL DISCHARGE TO JOHNSTON
 - FUTURE JOHNSTON SEWERS TO EXISTING DEVELOPMENT
 - SEWERED AREAS THAT DO NOT DISCHARGE TO JOHNSTON
 - INFILL DEVELOPMENT
 - NBC ACTIVE MANHOLES
 - WATERBODIES

