

EMTONE™

TONED.
NOT TEXTURED.



SMOOTH AND SOOTHE YOUR SOUL WITH EMTONE



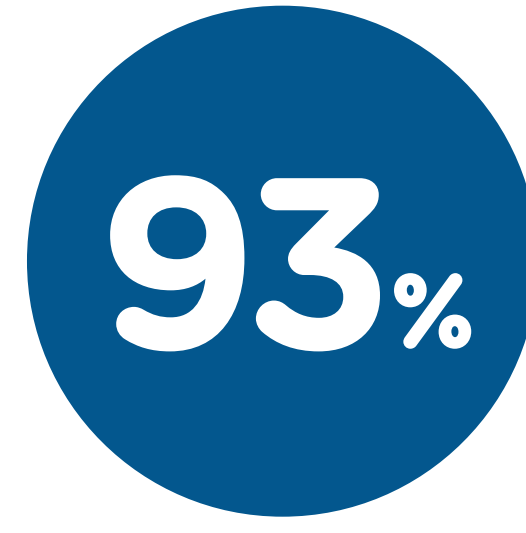
HIGHER INCREASE
OF ELASTIN FIBERS*



HIGHER INCREASE
OF COLLAGEN*

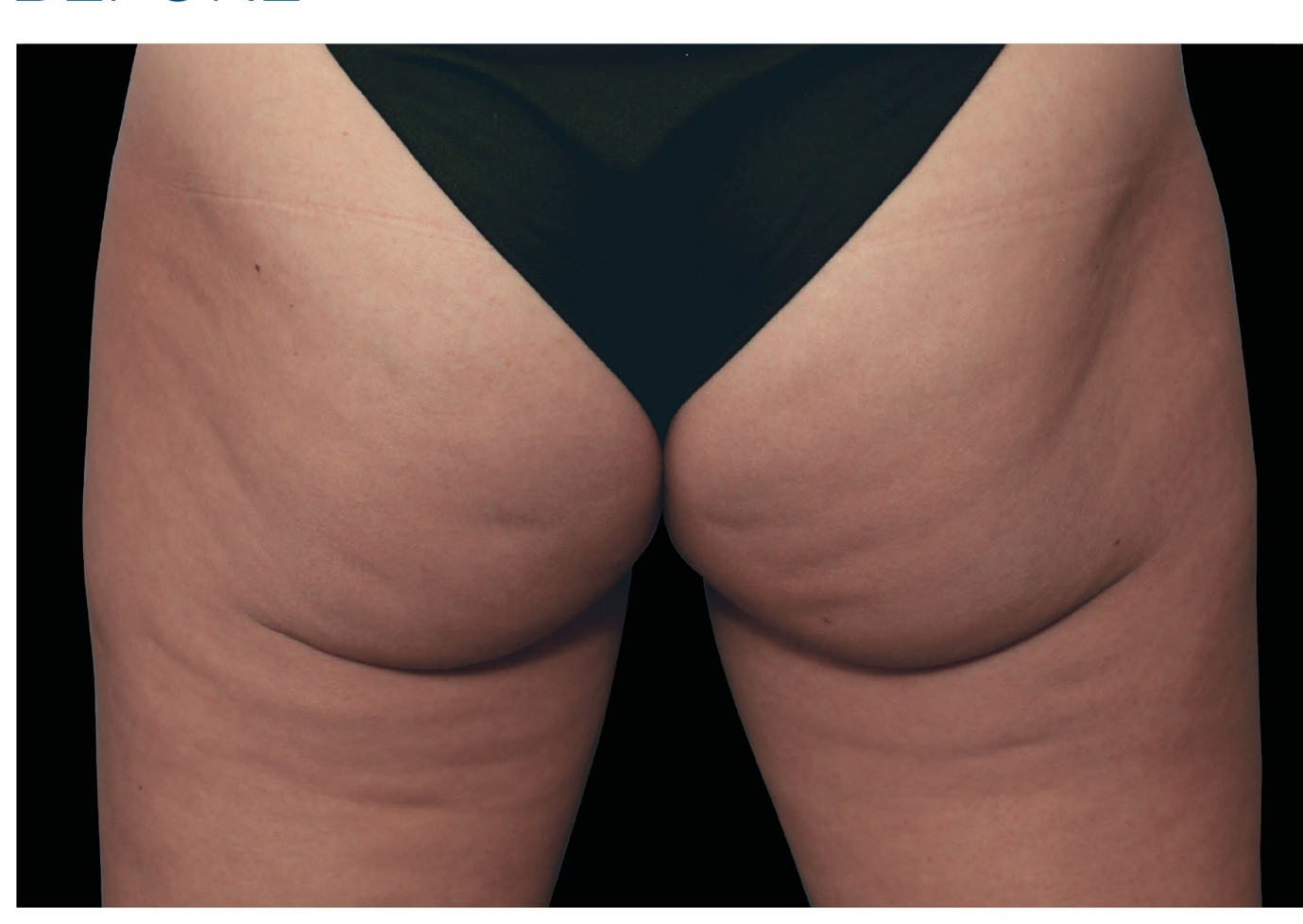


FASTER THAN
STAND ALONE
THERAPIES*



VISIBLE REDUCTION
IN CELLULITE*

BEFORE



AFTER **EMTONE**

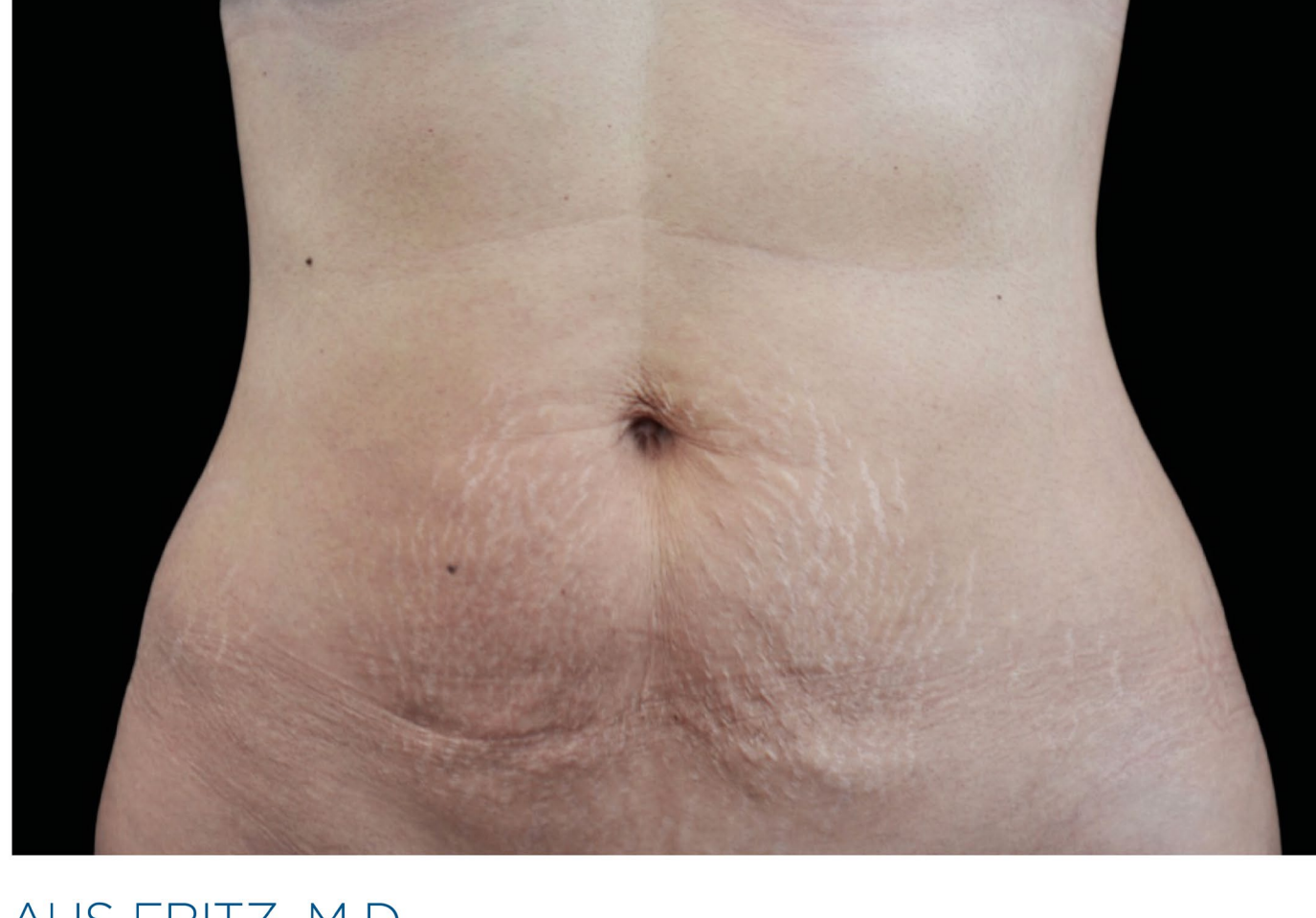


AFTER 4th TREATMENT, COURTESY OF: MARC SALZMAN, M.D.

BEFORE



AFTER **EMTONE**



3 MONTHS AFTER 4th TREATMENT, COURTESY OF: KLAUS FRITZ, M.D.

BEFORE



AFTER **EMTONE**



3 MONTHS AFTER 4th TREATMENT, COURTESY OF: BTL AESTHETICS

Results and patient experience may vary. As with any medical procedure, ask your doctor if the EMTONE procedure is right for you. EMTONE is intended to provide heating for the purpose of elevating tissue temperature for selected medical conditions such as temporary relief of pain, muscle spasms, and increase in local circulation. EMTONE massage device is intended to provide a temporary reduction in the appearance of cellulite. ©2019 BTL Group of Companies. All rights reserved. BTL is a registered trademark in the United States of America, the European Union, and other countries. The products, the methods of manufacture or the use may be subject to one or more U.S. or foreign patents or pending applications. Trademarks: EMSculpt®, Emsella®, EMTONE™, EMBODY™, and HIFEM™ are parts of EM™ Family of products. *Data on file. The percentage indicates the level of difference of simultaneous application compared to the consecutive application.



EMTONE.COM | INFO@BTLNET.COM

