

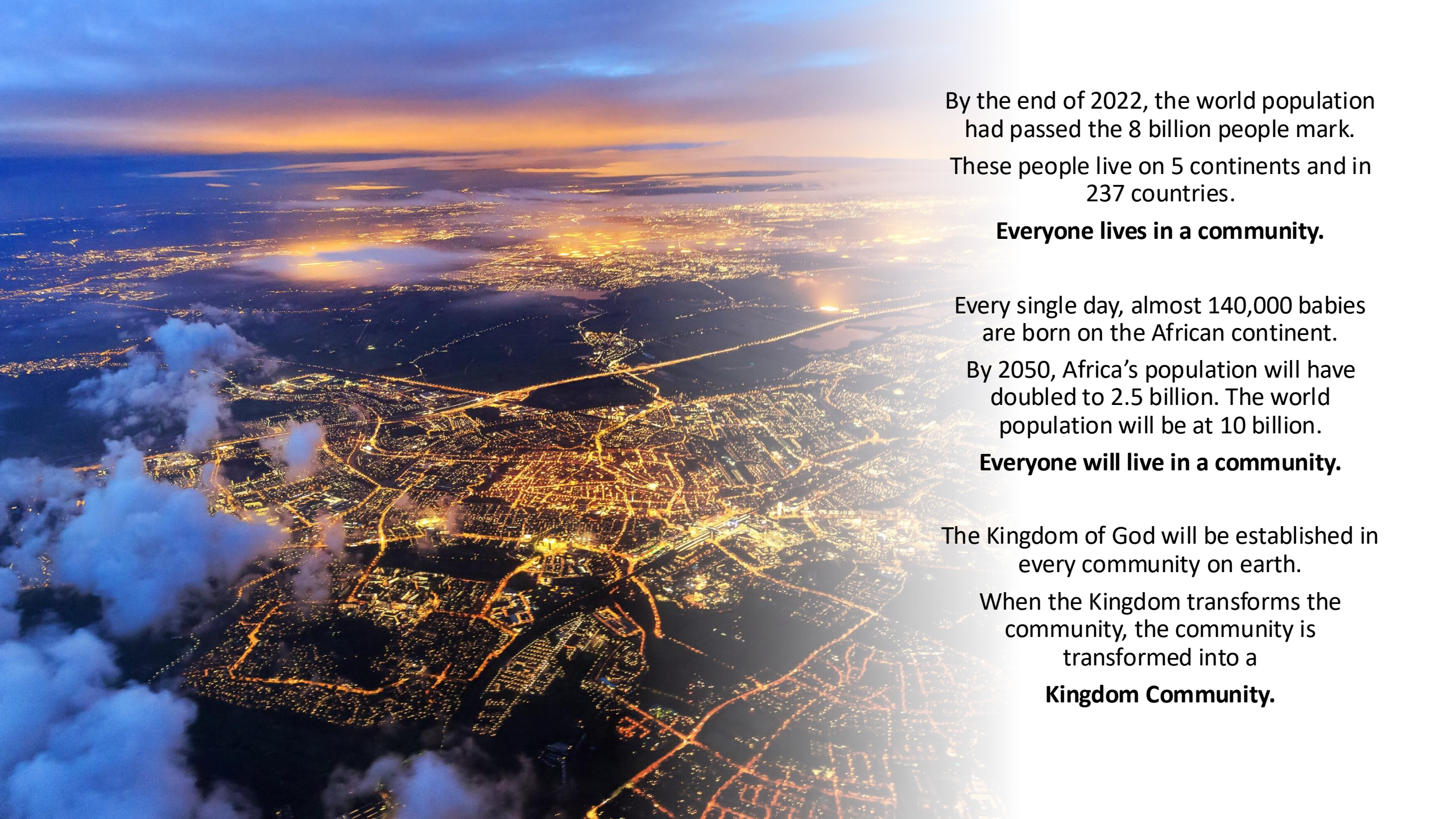
**Introducing the
Kingdom Matrix
for
Community Transformation**





JESUS CHRIST

“Your Kingdom come, Your will be done,
on Earth as it is in Heaven”



By the end of 2022, the world population had passed the 8 billion people mark.

These people live on 5 continents and in 237 countries.

Everyone lives in a community.

Every single day, almost 140,000 babies are born on the African continent.

By 2050, Africa's population will have doubled to 2.5 billion. The world population will be at 10 billion.

Everyone will live in a community.

The Kingdom of God will be established in every community on earth.

When the Kingdom transforms the community, the community is transformed into a

Kingdom Community.

The background features a complex digital aesthetic. It consists of numerous vertical lines of varying lengths and thicknesses, some ending in small blue dots, creating a sense of depth and movement. In the lower half, there are wavy, grid-like patterns in shades of purple and blue, resembling a digital landscape or data flow. The overall color palette is dominated by deep blues and purples, with some lighter cyan highlights.

The fullness of the glory, grace and every dimension of the Kingdom of Heaven will be imparted in communities globally. Surely the knowledge of the glory of God shall cover the earth as the waters cover the sea.

The day will arrive when all things outside the Kingdom will be judged. Ultimately, we shall live forever in the new heaven and the new earth.

The Kingdom Matrix structure facilitates the impartation of every dimension and aspect of the Kingdom of Heaven to transform our communities in the spiritual and the physical realms.

The Kingdom Matrix consists of
Kingdom Verticals and **Kingdom Horizontals**.





Kingdom Verticals

Creating a complete Kingdom Infrastructure by imparting the Spiritual and Physical Verticals into the community

Spiritual Verticals

Worship, Prayer, Evangelism, Discipleship, Home Churches, Resource Centre Churches, Full Spectrum of Ministries

Physical Verticals

Water&Sanitation, Food Production, Housing, Energy, Security, Health, Education, Technology, Transport, Governance, Commerce, Finance, Industry, Media, Sport, Hospitality, Leisure

Spiritual Verticals 1

The Fivefold DNA Verticals

Apostolic

- Breakthrough
- Foundation
- Expand

Prophetic

- Proclaim
- Release
- Correct

Evangelistic

- Preach
- Convert
- Ignite

Pastoral

- Lead
- Grow
- Care

Teacher

- Teach
- Train
- Prepare

Spiritual Verticals 2

Worship

- Personal
- Family
- Group
- Big
- Mega

Prayer

- Personal
- Family
- Group
- Big
- Mega

Evangelism

- Personal
- Group
- Big
- Mega

Discipleship

- Personal
- Group
- Big
- Mega

Churches

- Home
- Resource Centres
- Apostolic Resource Centres

Spiritual Verticals 3

Men

- Personal
- Family
- Group
- Big
- Mega

Women

- Personal
- Family
- Group
- Big
- Mega

Youth

- Personal
- Group
- Big
- Mega

Family

- Personal
- Group
- Big
- Mega

Specialized

- The full spectrum of ministries in the Body of Christ

Physical Verticals 1

Water & Sanitation

- Water
 - Home Access
 - Community Access
 - Home Storage
 - Community Storage
- Sanitation
 - Home
 - Public

Food Production

- Family Farm
- Community Farm
- Commercial Farm
- Post Harvest
- Processing
- Finance
- Logistics
- Access to Market
- Export

Housing

- Levels
 - Minimum
 - Basic
 - Good
 - Great
- Capacity
 - Import
 - Local
 - Export

Energy

- Access
 - Home
 - Transport
 - Community
 - Industrial
- Generation
 - Home
 - Transport
 - Community
 - Industrial
 - Export

Security

- Goal No Crime
- Neighbourhood Watch
- Police
- Private
- Surveillance
- Perimeter
- Early Detection
- Access Gates
- Rehabilitation

Physical Verticals 2

Health

- Access to Healthcare
 - Basic
 - General
 - Specialized
- Provision of Healthcare
 - Basic
 - General
 - Specialized
- Education

Education

- Access
 - Basic
 - Primary
 - Secondary
 - Tertiary
- Skills
- Provision
 - Basic
 - Primary
 - Secondary
 - Tertiary
- Programs
- Skills
- Global Connect

Technology

- Information (IT)
Communication
Electrical &
Electronics
Mechanical
Civil &
Construction
Bio & Medical
Energy
Transportation
Agricultural
(AgTech)
Industrial &
Manufacturing
Environmental
Space

Transport

- Pedestrian
- Bicycle
- Road
- Public
- Rail
- Sea Port
- Inland Port
- Airport
 - Domestic
 - International
 - Cargo
- Logistical Hub
- SEZ

Governance

- Municipal
- City
- State/Provincial
- National
- Legal
- Correctional
- Education
- Participation
- Activism

Physical Verticals 3

Commerce

- Education
- Training
- Incubator
- SME
- Corporate
- Services
- Localization
- Export
- Network
- Mentor
- Branding

Finance

- Banking
 - Personal
 - SME
 - Corporate
 - Digital
- Investment Climate

Industry

- Production
- Manufacturing
- Mining
- ICT
- Services
- Trade
- Retail
- Industrial Parks
- Global Connect

Media

- News
 - General
 - Local
 - Community Journalism
- Mass
- Social

Sport

- School
- Community
- Clubs/Leagues
- Professional
- Events
- Infrastructure

Physical Verticals 4

Hospitality

- Food Outlets
- Restaurants
- Accommodation
 - B&B
 - Hotels
 - Resorts
- Travel&Tourism

Leisure

- Parks
- Nature
- Music Events
- Community
Family Events


The **Kingdom Horizontals** are defined geographical zones of territory:

continents, countries, provinces, cities, towns and villages.

Communities are segmented with a maximum population of 30,000 to allow for a laser-sharp focus. Therefore, cities and bigger towns consist of many communities. World cities consist of hundreds of communities.

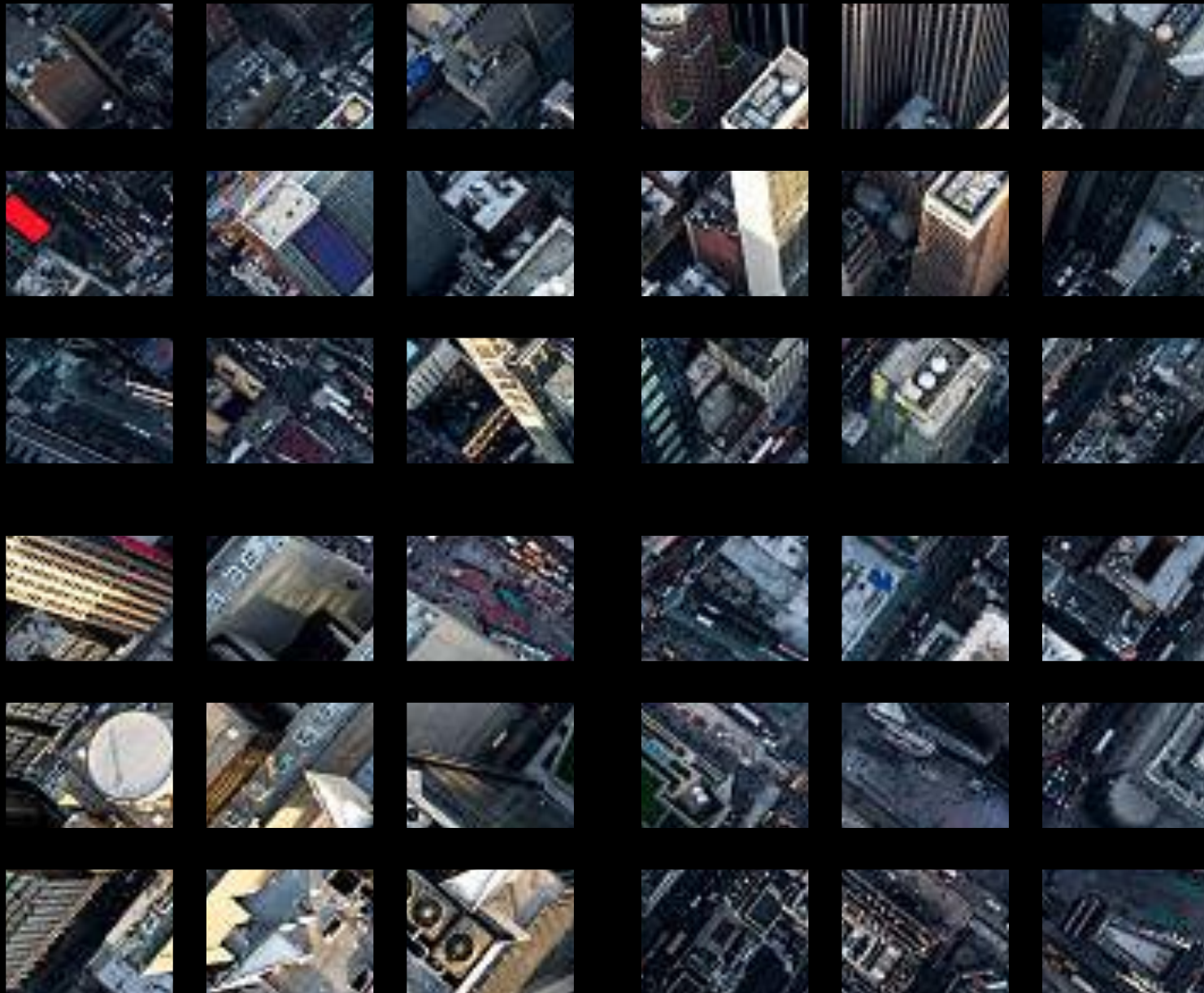
As the process of Kingdom Advancing in a community progresses, the community is subdivided into ever smaller **zones**. The smaller the **zone**, the higher the intensity of Kingdom Advancing.

Example: dividing Eersterust, South Africa – a town covering 600 ha – into 600 one-hectare zones.



In the Kingdom Matrix, Kingdom Verticals intersect with Kingdom Horizontals. For example, Men's Ministry in zone C3, Security in zone H9, Evangelism in zone K12, Data connectivity in zone B5, Discipleship in zone R14.

The goal is to establish every relevant Kingdom Vertical in every Kingdom Horizontal (zone) in the community. All areas need prayer, evangelism and discipleship, but not all areas need commerce or children's ministry.



The Kingdom Matrix establishes every applicable **Kingdom Vertical** in every zone of the Horizontal grid.

Some Kingdom Verticals, like prayer, evangelism, discipleship and security will be everywhere. Other Kingdom Verticals like Food Production and Hospitality verticals are present in some zones.

The champions over
Kingdom Horizontals are
called **guardians**.

The champions over
Kingdom Verticals are
called **leaders**.



Action

1. Define Community Zones
2. Appoint guardians over every zone
3. Appoint leaders over verticals
4. Move forward to establish verticals in all zones
5. Measure progress





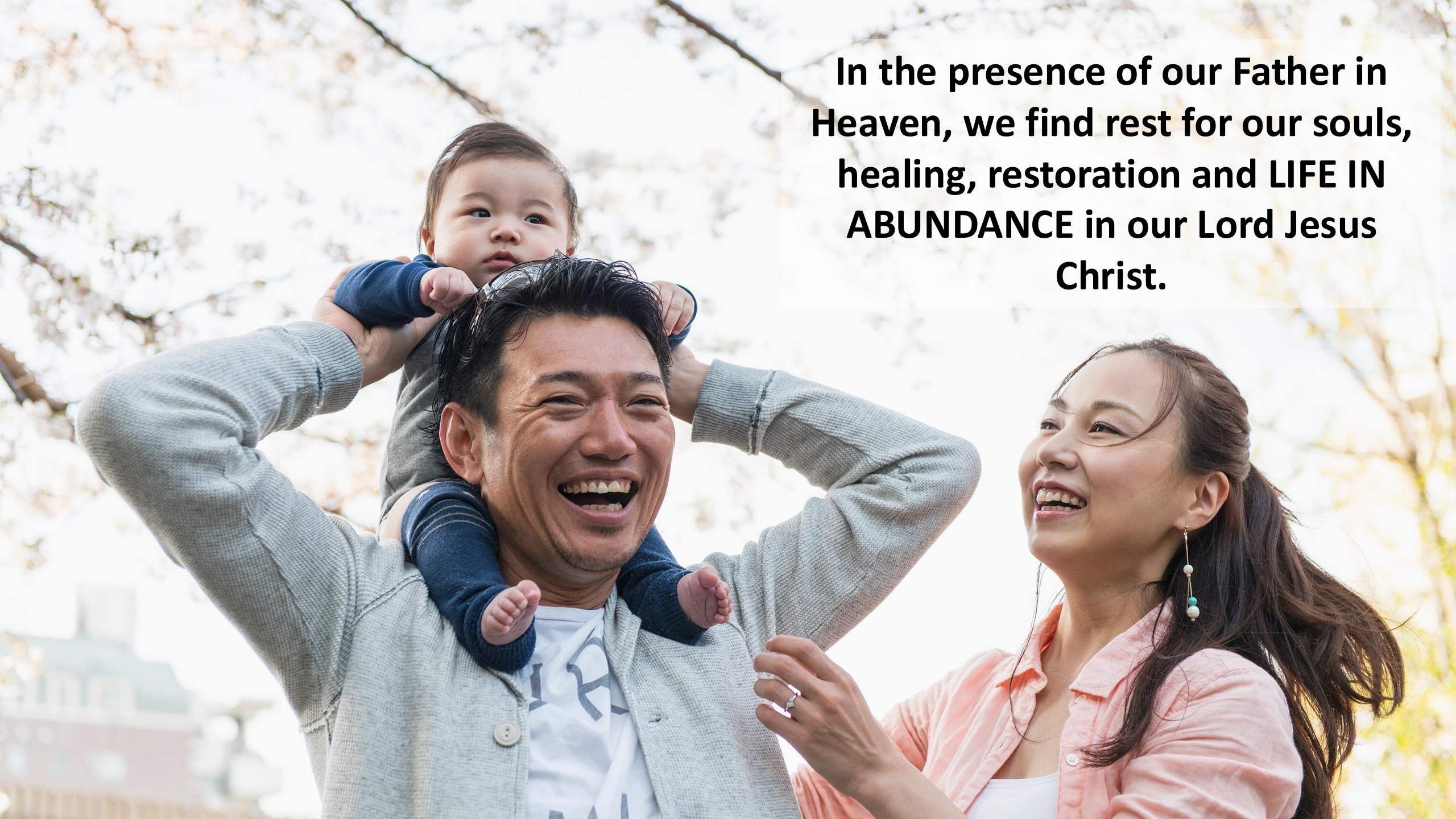
Creating a Net Positive Community

A net positive community is a Kingdom Community that attracts people and resources. It is a community where people WANT to live, work and worship God.

As we establish the Kingdom of God in a community, we establish the House of God in that community.

The stronger and more Christlike the House of God becomes, the more the people of the community **will come home to their Father.**



A photograph of a family of three laughing joyfully outdoors. The father is in the center, wearing a grey cardigan over a white t-shirt, with a baby on his shoulders. The mother is on the right, wearing a pink shirt. They are standing in front of a tree with white blossoms. The background is bright and slightly blurred.

In the presence of our Father in Heaven, we find rest for our souls, healing, restoration and LIFE IN ABUNDANCE in our Lord Jesus Christ.

The time has come to call upon the name of the Lord, to seek His face for the healing, deliverance and salvation of our communities, to see the forces of darkness driven out by the Victorious Kingdom of Light.

Ask, Seek, Knock

“Ask and it will be given to you; seek and you will find; knock and the door will be opened to you. For everyone who asks receives; the one who seeks finds; and to the one who knocks, the door will be opened.”
(Jesus Christ, Mat. 7:7-8)




**As we pray for our communities, proclaim the life of God
over its people and pro-actively move forward in
obedience to the Holy Spirit, a new WINDOW OF HOPE will
open in our cities, towns and villages.**



An aerial photograph of rolling green hills under a soft, golden light, likely at sunrise or sunset. The hills are covered in lush green grass and fields, with a winding road cutting through the landscape. The background shows distant mountains and a hazy horizon.

A Promised Land is awaiting every person who is found faithful and obedient in Christ Jesus.

Let us commit to take the multitudes of the nations to the fulness of the purposes of God for their lives on earth.




“But the rock that struck the statue became a **huge mountain** and filled the whole earth.”
(Dan. 2:35)

“In the time of those kings, the God of heaven will set up a **kingdom** that will never be destroyed, nor will it be left to another people. It will crush all those kingdoms and bring them to an end, but it will itself **endure forever.**”
(Dan. 2:44)



**Therefore, we keep moving
forward by faith, aiming to follow
step-by-step in the footsteps of
our Lord Jesus Christ.**

A photograph of an airplane wing in flight against a sunset sky. The wing is on the left side of the frame, extending towards the right. The sky is a mix of orange, pink, and purple, with a blue horizon line. The wing has several small lights along its edge. The overall mood is serene and hopeful.

...for as long as we live, we will continue to go out to the ends of the earth, obeying the words of our Lord Jesus Christ:

“Therefore go, make disciples of all the nations, baptizing them in the name of the Father, the Son and the Holy Spirit, and teaching them to obey all I have commanded you to do.”



KINGDOM GLOBAL GROUP
ADVANCING THE KINGDOM GLOBALLY