

Building Capacity for Systems Transformation

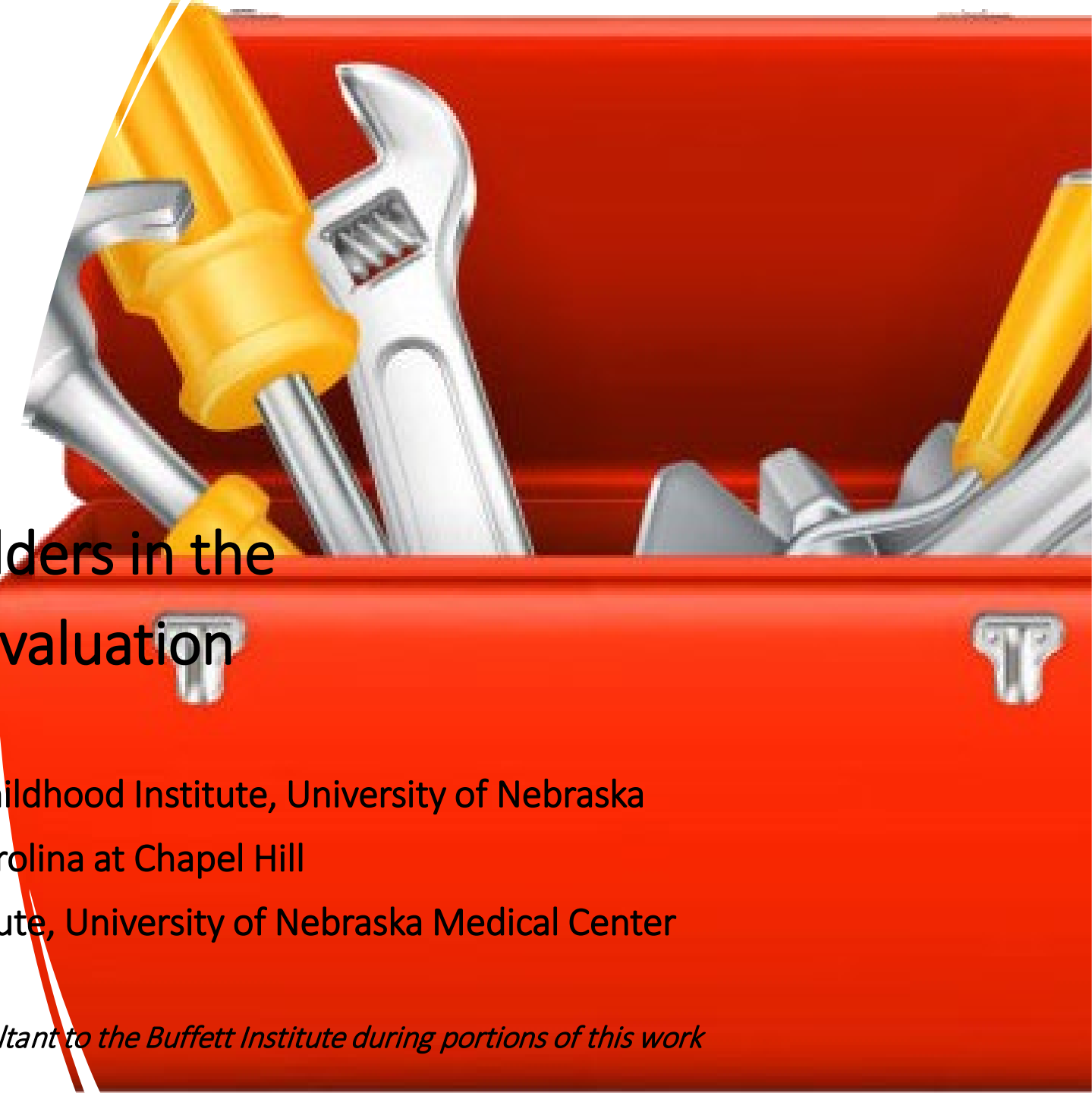
Tools for Engaging Stakeholders in the Design of Equity-Focused Evaluation

Kathleen C. Gallagher, PHD, Buffett Early Childhood Institute, University of Nebraska

Kirsten Kainz, PHD*, University of North Carolina at Chapel Hill

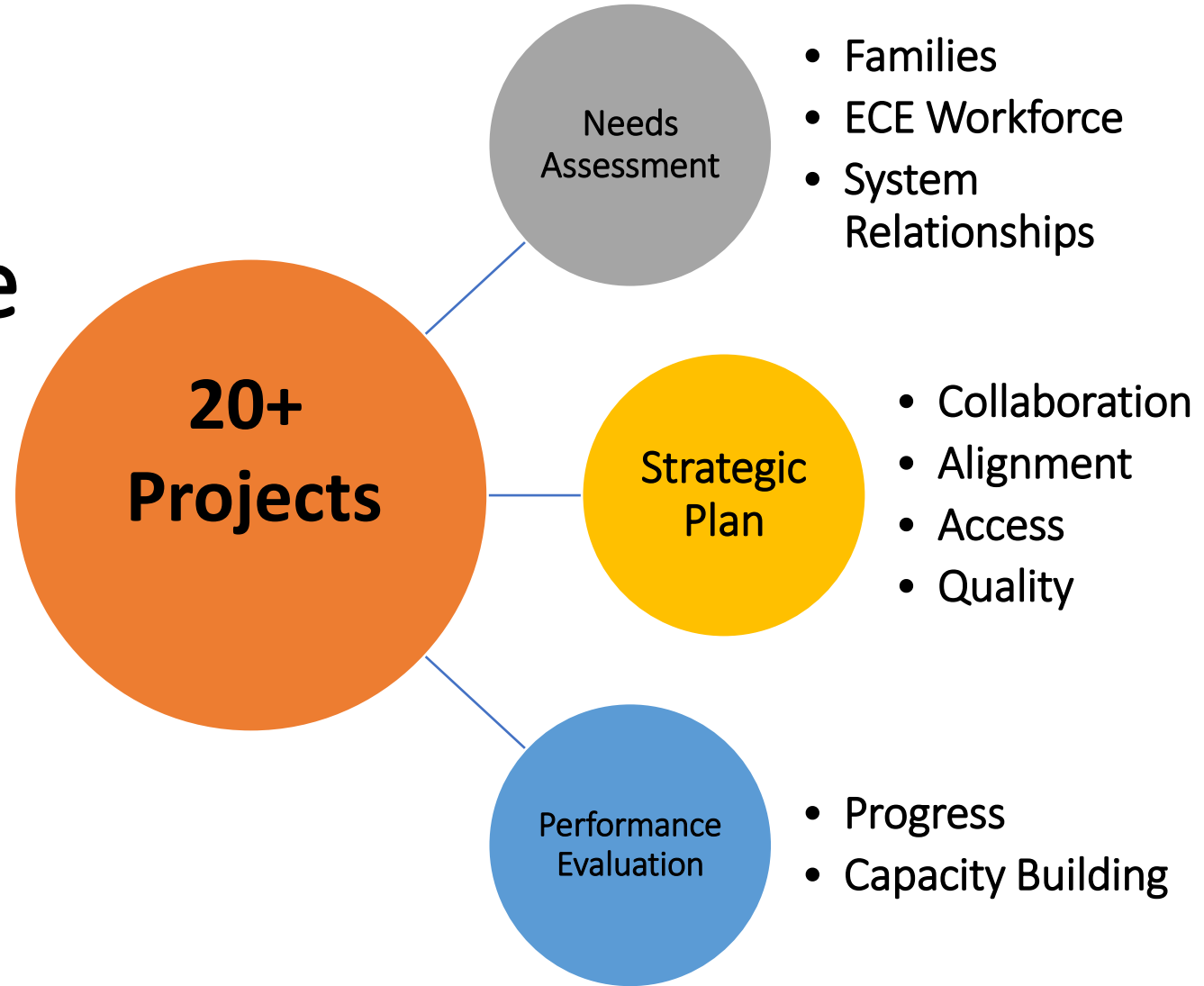
Jolene Johnson, PHD, Monroe-Mayer Institute, University of Nebraska Medical Center

**Please note that Kirsten Kainz served as a paid consultant to the Buffett Institute during portions of this work*



Context: Early Childhood Systems Change

*Preschool
Development Grant
Birth to Five*



A Retrospective View of our Tools

- *Started with values and relationships*
- *Responded to calls for equity*
- *Explored connections*
 - *Participation*
 - *Voice*
 - *Conversation*
 - *Action*



Tool #1: Systemic Communities of Practice

Communities of practice: groups of people who share a concern or a passion for something they do and learn how to do it better as they interact regularly (Wegener & Travner)

Systemic Community of Practice: We redefined the “WHO”

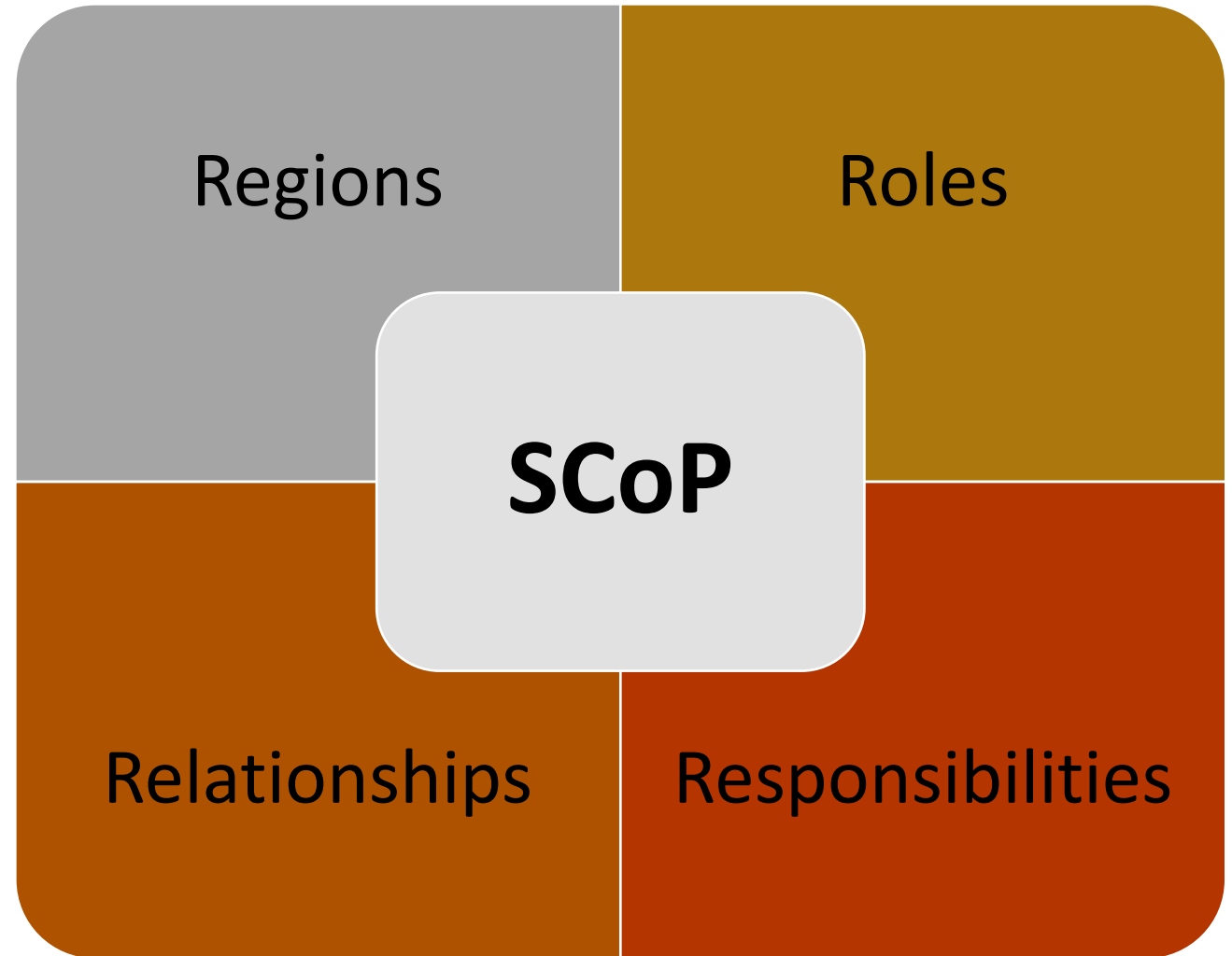


Systemic Communities of Practice (SCoP)

*Recognizes **networked nature** of systems*

*Seeks to **diversify conversation** through diverse membership*

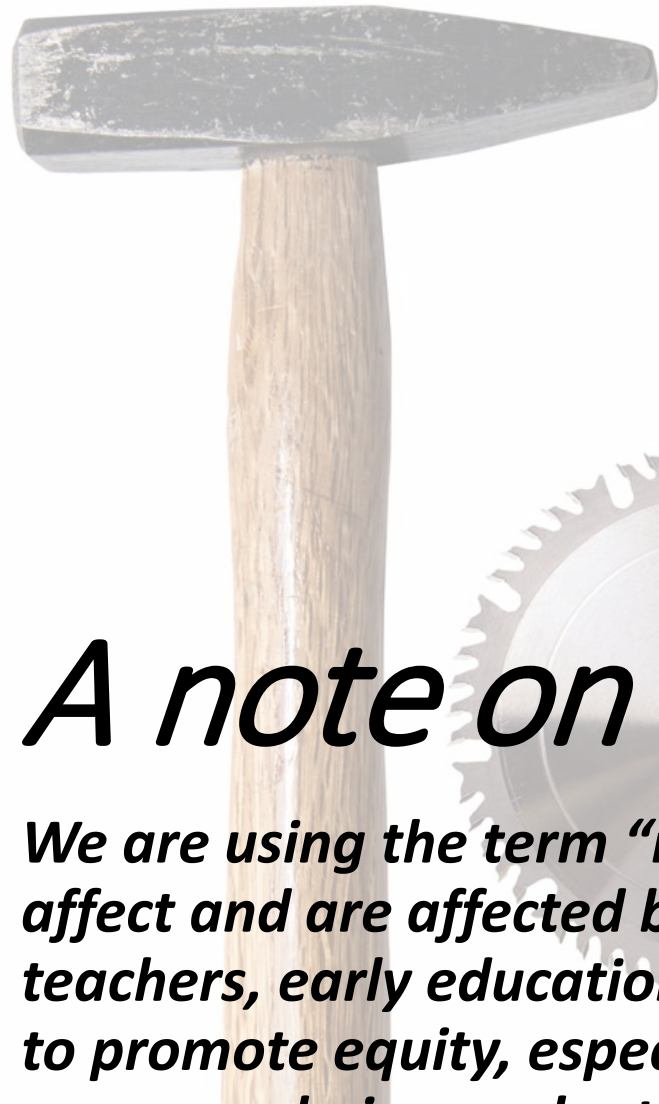
*Aspires to generate new information sharing patterns to **disrupt existing structures***





Tool #2: Equity Action Agendas

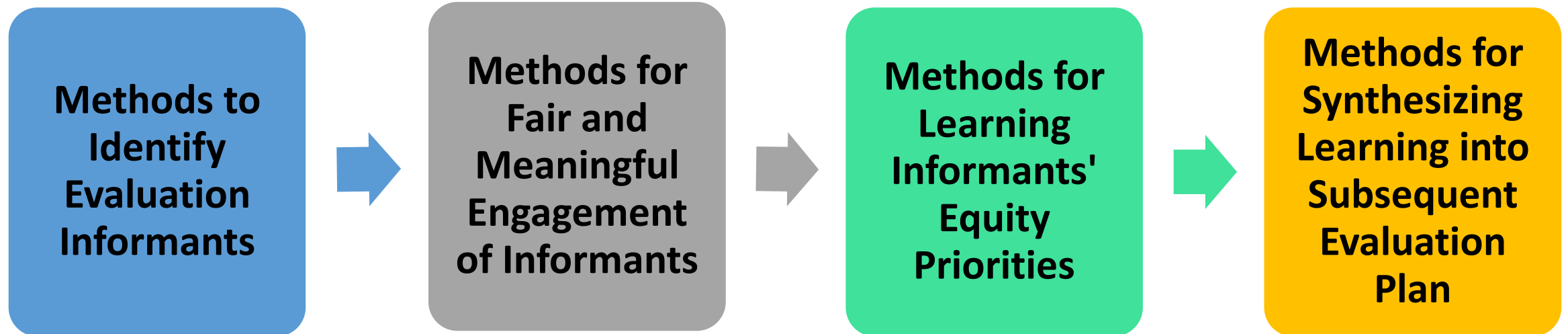
- *A **pre-evaluation** process to generate equitable experiences and outcomes*
- *To **identify** the inequities in intervention and evaluation*



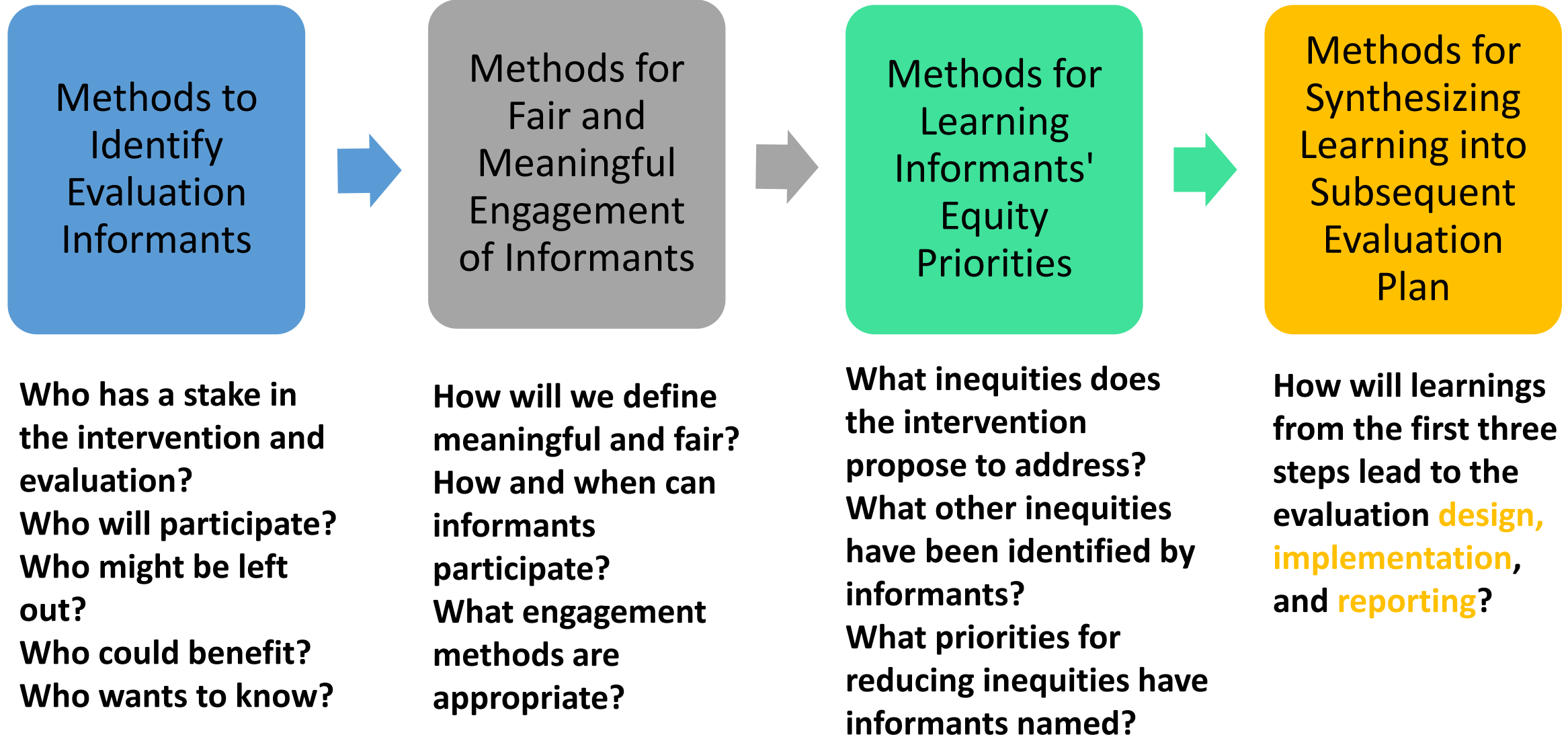
A note on language:

We are using the term “informants” to refer to the diverse set of people who affect and are affected by evaluations (funders, evaluators, policy makers, teachers, early education providers etc.) who will need to inform the evaluation to promote equity, especially the people who participate in interventions and programs being evaluated.

Equity Action Agendas: The Process



Key Questions for Each Step in the Process:



Tool #3: Equity Lens & Scenario Analysis

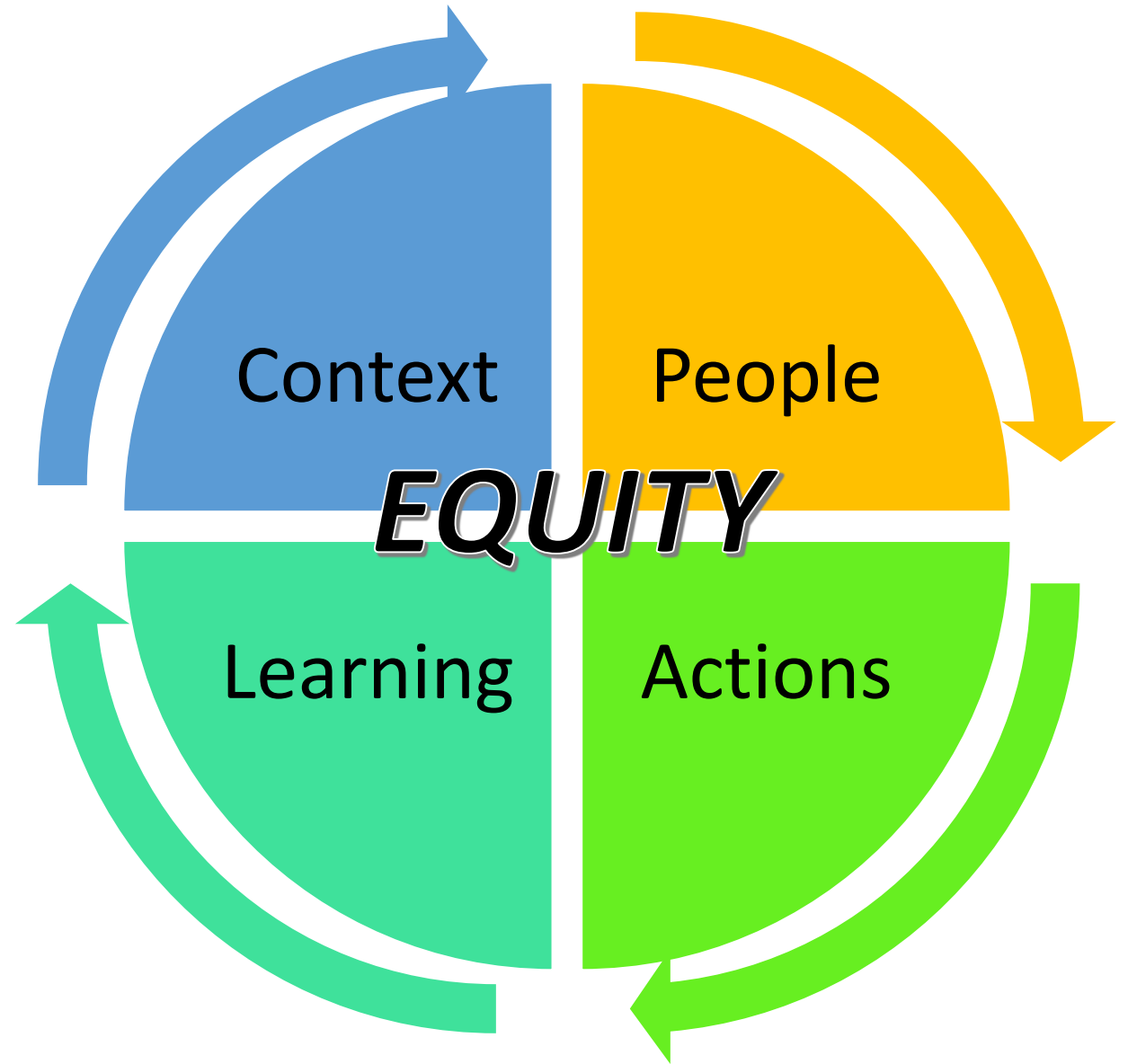
*Foster conversations
about equitable
processes and
outcomes*



Scenario Analysis Using an Equity Lens

*Take systemic view
of realistic scenarios*

*Rely on the diversity and
history of **relationships**
within the SCoP to
unearth **multiple
perspectives***



Tool #4: Framework for Measuring Progress

- *Change existing focus on metrics and measurables*
- *Recognize social aspects of identifying progress*
- *Operationalize equity in theory of progress*



Prioritize
key
capacities
within
social
networks



Integrate insights to build capacities

Community Driven Systems Impact

Build local capacity to analyze impact

Empower communities to determine priorities

Generate new and better information

Demonstrate value and impact

Seitz & Grieve, 2004

Integrate insights to build capacities

Community Driven Systems Impact

Build local capacity to analyze impact

Empower Data Storytelling

Generate | A compelling story sparks public imagination and
Demonstr | draws people to think...data stories, at their
best, push the audience from simply believing,
to knowing with a degree of confidence.

Matei & Hunter, 2021

Integrate insights to build capacities

Community Driven Systems Impact

Build local capacity to analyze impact

Empower Data Storytelling

Generate | A compelling story sparks public imagination and

Demonstr draws people **Key Questions for Measuring Impact**

best, push the What are the outcomes?

to knowing w Who is experiencing the outcomes?

How much impact is experienced?

Who/what is contributing to the impact?

Is the impact different from what we expected?

Peterson et al., 2020

Tell us about your

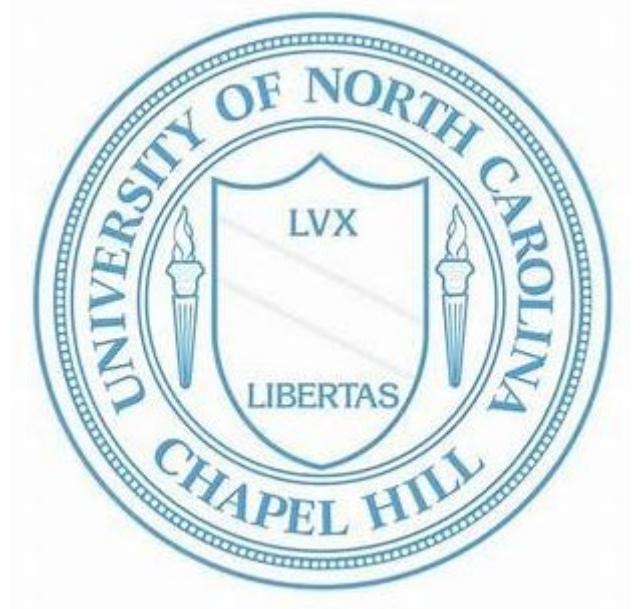


References

- Halgunseth, L., Peterson, A., Stark, D. R., & Moodie, S. (2009). Family engagement, diverse families, and early childhood programs: An integrated review of the literature. Washington, DC: The National Association for the Education of Young Children.
- Matei, S. A., & Hunter, L. (2021). Data storytelling is not storytelling with data: A framework for storytelling in science communication and data journalism. *The Information Society*, 37(5), 312-322.
- Midgley, G. (2006). *Systems concepts in evaluation: An expert anthology*. Edge Press, 11-34.
- Peterson, G., Yawson, R., JK, E., & Nicholls, J. (2020). How do we know? Measuring impact. In *Navigating Big Finance and Big Technology for Global Change* (pp. 91-130). Palgrave Macmillan, Cham.
- Seitz, V., & Grieve, M. (2004). Participatory outcomes-based evaluation: The success measures process and data system. *Building the Organizations That Build Communities*, 285 - 292.
- Trochim, W. M., & Urban, J. B. (2021). Theoretical foundations and philosophical orientation of Relational Systems Evaluation. *New Directions for Evaluation*, 2021, 19– 30. <https://doi.org/10.1002/ev.20449>
- Urban, J.B., Archibald, T., Hargraves, M., et al. (2021). Introduction to Relational Systems

Resources

- Evaluation. *New Directions for Evaluation*, 2021, 11–18. <https://doi.org/10.1002/ev.20444>
- The Family Engagement Toolkit. <https://www.buildinitiative.org/FamilyEngagementToolkit>
- Moving beyond the Family Engagement Checkbox. <https://cssp.org/2020/10/moving-beyond-the-family-engagement-check-box/>
- Principles for Engaging and Centering Parent Voice. <https://ascend.aspeninstitute.org/wp-content/uploads/2020/10/Principles-for-Engaging-and-Centering-Parent-Voice.pdf>
- The Equitable Evaluation Framework. <https://www.equitableeval.org/ee-framework>
- WT Grant Foundation Institutional Challenge Grant. <http://wtgrantfoundation.org/grants/institutional-challenge-grant>
- Equity Audits. <https://www.edweek.org/teaching-learning/how-does-an-equity-audit-work/2015/09>
- NCTE Early Childhood Equity Statement. <https://cdn.ncte.org/nctefiles/equityearlyedbrief.pdf>
- Wenger & Trayner Model: <https://wenger-trayner.com/introduction-to-communities-of-practice/>



Notice of Award

Award# 90TP0079-03-00

FAIN# 90TP0079

Federal Award Date: 04/15/2022

Facilitation of the Nebraska Early Childhood Strategic Plan is provided by the Buffett Early Childhood Institute at the University of Nebraska as part of a broad collaborative effort of the Nebraska Department of Health and Human Services, the Nebraska Department of Education, the Nebraska Children and Families Foundation, and a number of other organizations.

This project is supported by the Preschool Development Grant Birth through Five Initiative (PDG B-5), Grant Number 90TP0079-03-00, from the Office of Child Care, Administration for Children and Families, U.S. Department of Health and Human Services. Its contents are solely the responsibility of the authors and do not necessarily represent the official views of the Office of Child Care, the Administration for Children and Families, or the U.S. Department of Health and Human Services.