

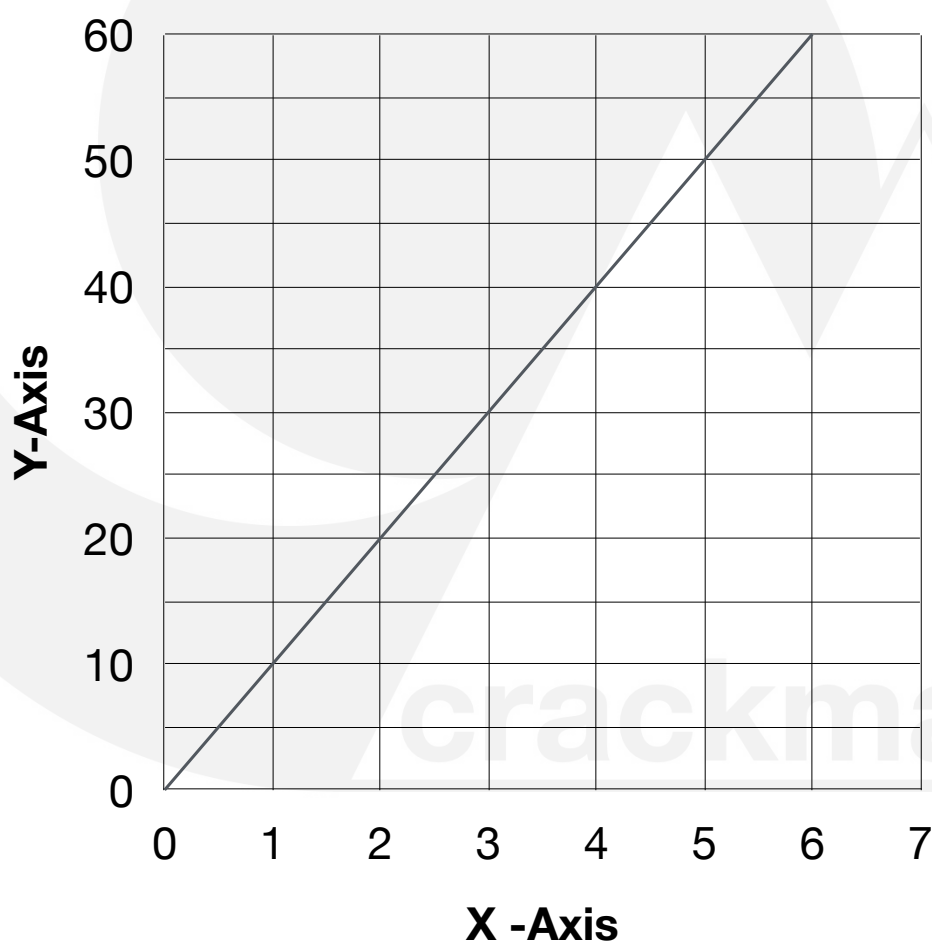
39. How to use a conversion graph



Practice Questions:

1. Find the x-value when the y-value is 10.

2. Find the y-value when the x-value is 3.



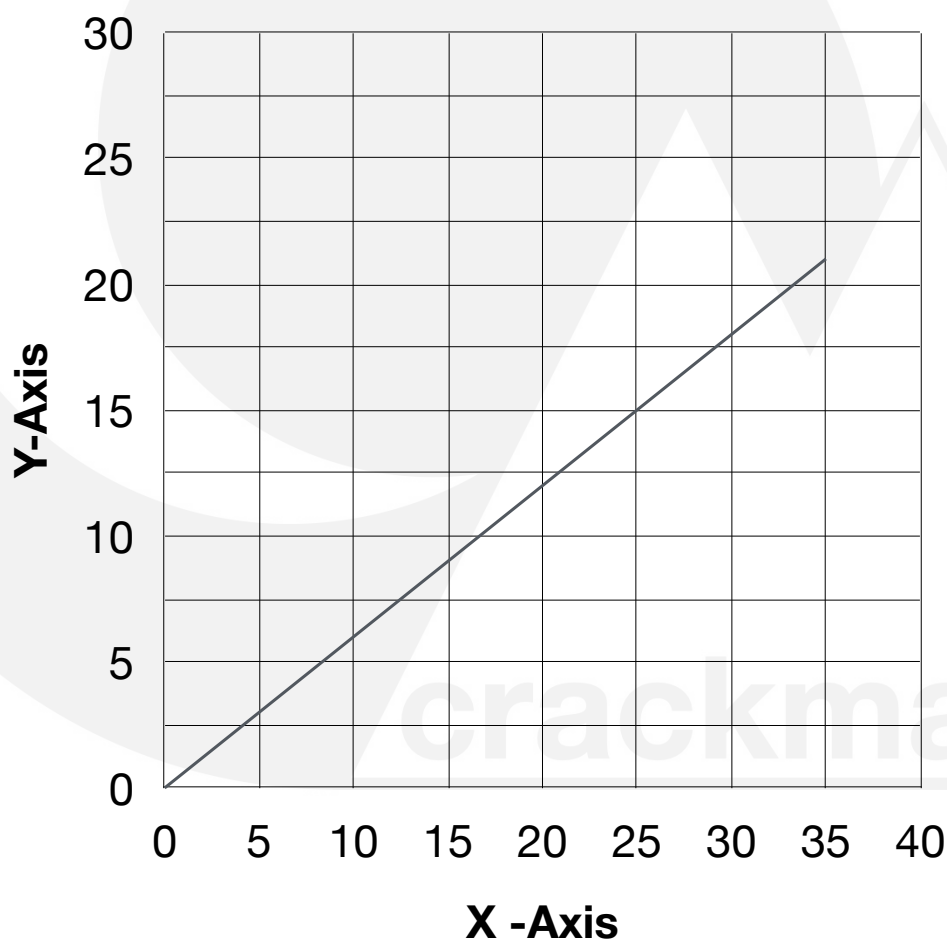
39. How to use a conversion graph



Practice Questions:

3. Find the x-value when the y-value is 10.

4. Find the y-value when the x-value is 32.



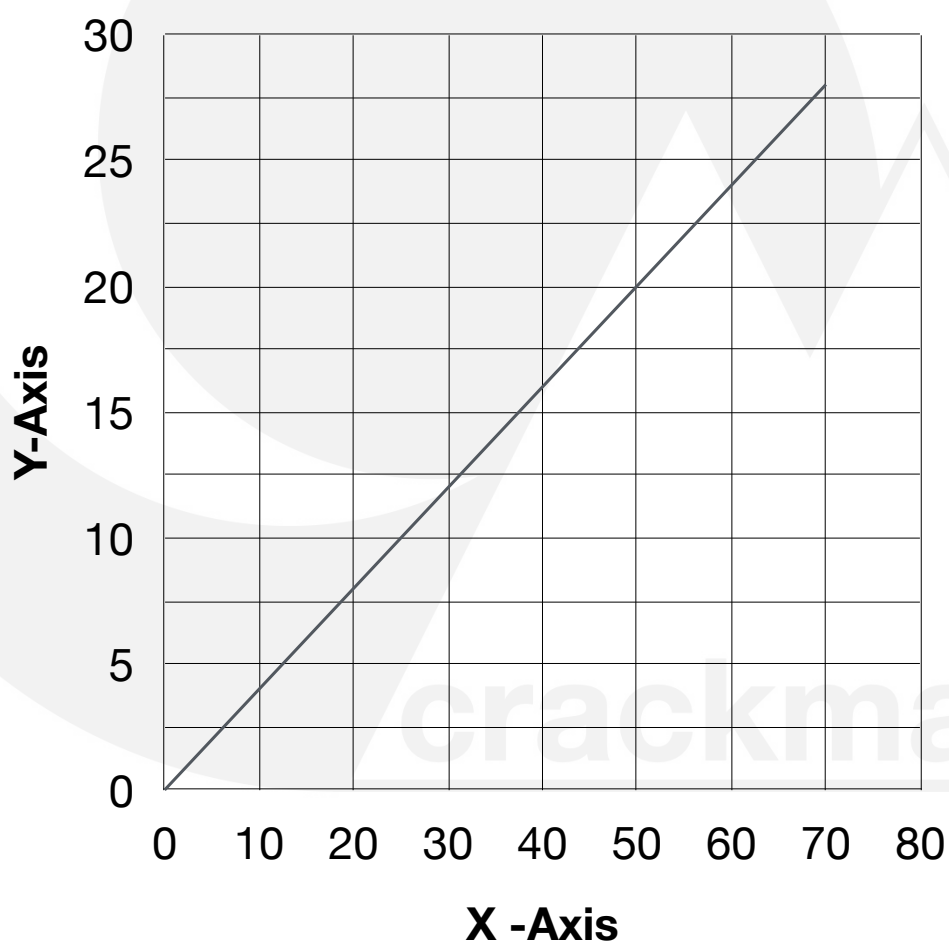
39. How to use a conversion graph



Practice Questions:

5. Find the x-value when the y-value is 0.

6. Find the y-value when the x-value is 40.



39. How to use a conversion graph



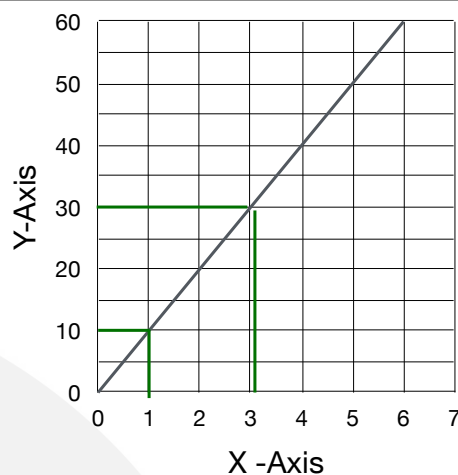
Practice Questions: **Answers**

1. Find the x-value when the y-value is 10.

1. When $y = 10$, $x = 1$

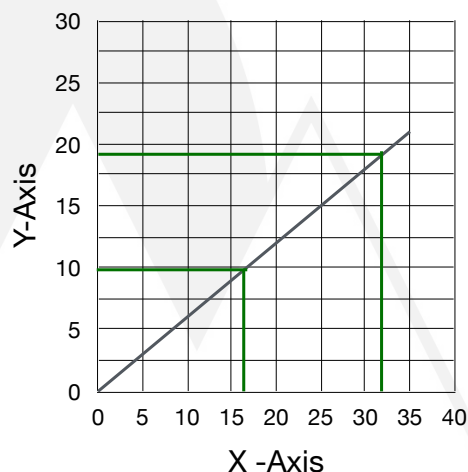
2. Find the y-value when the x-value is 3.

2. When $x = 3$, $y = 30$



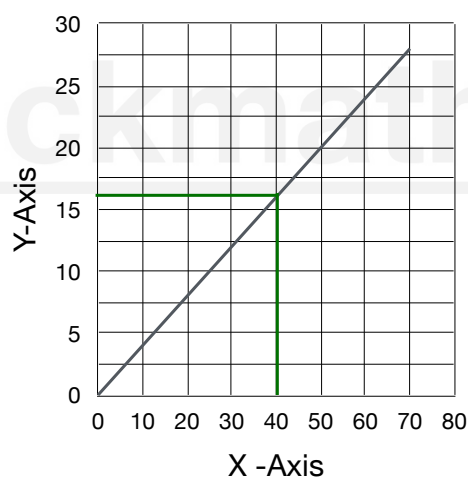
3. Find the x-value when the y-value is 10.

3. When $y = 10$, $x = 16$ (or 17)



4. Find the y-value when the x-value is 32.

4. When $x = 32$, $y = 19$ (or 18)



5. Find the x-value when the y-value is 0.

5. When $y = 0$, $x = 0$

6. Find the y-value when the x-value is 40.

6. When $x = 40$, $y = 16$ (or 17)