



X O N E
M E T A L S



At Xone Metals, we provide high-quality, precision-engineered steel for construction, manufacturing, and industrial applications. With a commitment to excellence, sustainability, and innovation, we ensure our steel products meet the highest standards of strength, durability, and environmental responsibility.

WWW.XONEMETALS.COM

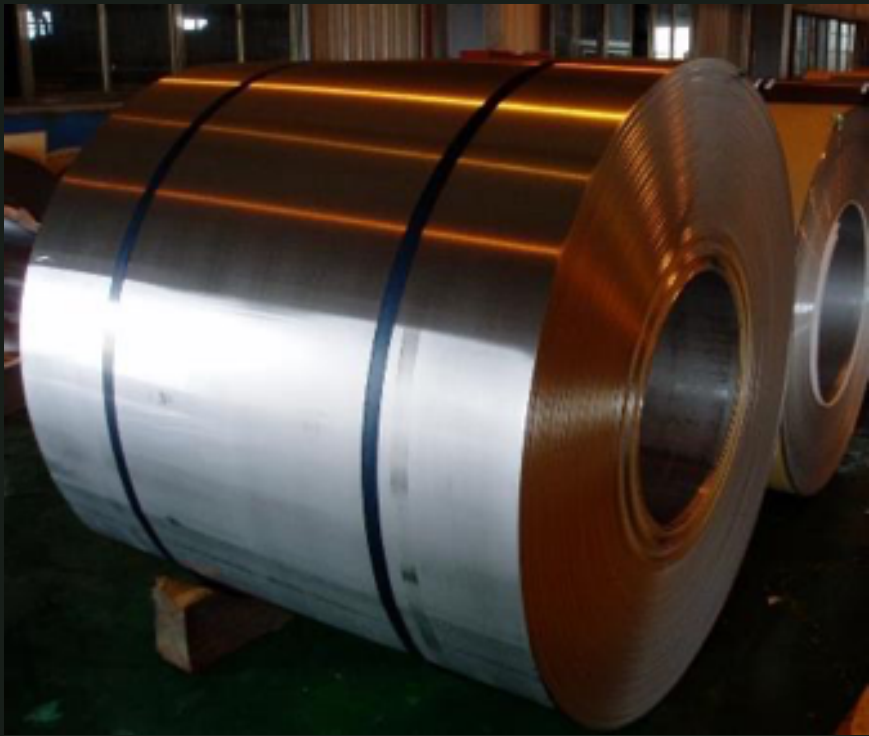


Our Products

We have a diverse Metal product range, such as stainless steel, alloy steel, galvanised steel, pre-painted steel, carbon steel, and aluminium in sheet, plate, coil, strip, welded and seamless pipe/tube, bar, wire rod, copper and brass. Our products have been certified by many worldwide organisations:- ISO 9001 - EU CE - RoHS - REACH



Stainless Steel Available Size



	Standard Dimension (mm)	Steel Grade
Hot Rolled Coil	Width: 610 - 2,000 Thickness: 2.5 - 10.0	201, 202, 204Cu, 301, 304, 304L, 310S, 316L, 321, 409L, 410S, 420J2, 430, 439, 441, 444, 445
Cold Rolled Coil	Width: 610 - 2,000 Thickness: 0.3 - 6.0	
Hot Rolled Plate	Width: 20 - 2,500 Thickness: 3.0 - 85	
Cold Rolled Sheet	Width: 600 - 2,000 Thickness: 0.1 - 3.0	
Hot Rolled Strip	Width: 16.0 - 600 Thickness: 2.5 - 10.0	
Cold Rolled Strip	Width: 4.0 - 600 Thickness: 0.1 - 3.0	



Stainless Steel Surface Finishes

	Definition	Application
No. 1	The surface is finished by heat treatment and pickling or processes corresponding thereto after hot rolling.	Chemical tank, pipe
No. 2D	The finishes after cold rolling, by heat treatment, pickling, or other equivalent treatment.	Heat exchanger, exhaust pipe
No. 2B	The finishes after cold rolling, by heat treatment, pickling, or other equivalent treatment, and lastly by cold rolling to give an appropriate luster.	Medical equipment, food industry, construction material, kitchen utensils.
BA	Those processed with bright heat treatment after cold rolling.	Kitchen utensils, electric equipment, building construction
No. 3	Those finished by polishing with NO.100 to NO.120 abrasives specified in JIS R6001.	Kitchen utensils, building construction
No. 4	Those finished by polishing with NO.150 to NO.180 abrasives specified in JIS R6001.	Kitchen utensils, building construction, medical equipment
HL	Those finished by polishing so as to give continuous polishing streaks by using abrasives of suitable grain size.	Building construction



Carbon Steel Hot Rolled Coil/ Strip/ Sheet



Product	Size (mm)	Grade
Coil	Thickness: 1.2 - 16 Width: 900 - 1,800	SPHC, SPHD, SPHE, SS400, SS490,SS540 SAE 1006~1025 GB Q195/Q235/Q345 ASTM A36/A570/A572 EN10130 DC01/DC03/DC04
Pickled and Oiled (P&O) Steel Coil	Thickness: 1.4 - 9 Width: 900 - 1,800	
Strip/ Sheet	The size depends on the customer's needs	

Carbon Steel Hot Rolled Plate

Product	Size (mm)	Grade
Heavy Plate	Thickness: 6.0 - 100 Width: 1,500 - 3,500 Length: 6,000 - 18,000 PCS Weight 21 tons max.	JIS SS400, SN400A/B/C, SN490B/C, SM400A/B/C, SM490A/B/C ASTM A36, A572 Gr.50, A516 Gr.70, A709 Gr.50/70, A588 Gr.A/B GB Q235/Q355/Q390/Q420 EN10025 S275N, S355N/NL/J2
Ship Plate	Thickness: 6.0 - 50 Width: 1,400 - 3,250 Length: 6,000 - 18,000 PCS Weight 21 tons max.	Grade: A, B, D, AH32, AH36, DH32, DH36, EH32, EH36 Classification Certificates : CCS of China, BV of France, NK of Japan, GL of Germany, ABS of USA, LR of U.K., KR of Korea, DNV of Norway, RINA of Italy



Carbon Steel Cold Rolled Coil/ Strip/ Sheet

Product	Size (mm)	Grade	Surface finish
Coil	Thickness: 0.3 - 2.5 Width: 900 - 1,650	JIS 3141 SPCC, SPCD, SPCE GB Q195/ 215/ 235	Bright Finish/ Dull Finish
Full Hard	Thickness: 0.13 - 1.60 Width: 762 - 1,300	JIS 3141 SPCC-1B	Bright Finish/ Dull Finish
Strip/ Sheet	The size depends on the customer's needs	SPCC, SPCD, SPCE	-



Hot-Dip Galvanized Steel Coils (Zinc Coated)

Thickness: 0.15 - 4.5 mm

Width: 600 - 1,534 mm



Hot-Dip Galvalume Steel Coils (55% Al-Zn Coated)

Thickness: 0.15 - 1.38 mm

Width: 600 - 1,300 mm



Hot-Dip Galfan Steel Coils (5% Al-Zn Coated)

Thickness: 0.25 - 4.5 mm

Width: 70 - 1,534 mm



Pre-Painted Hot-Dip Galvanized Steel Coils

Thickness: 0.2 - 1.5 mm

Width: 700 - 1,534 mm



Pre-Painted 5% Al-Zn Coated Steel Coils

Thickness: 0.2 - 1.5 mm

Width: 700 - 1,260 mm



Pre-Painted 55% Al-Zn Coated Steel Coils

Thickness: 0.2 - 1.25 mm

Width: 700 - 1,534 mm



Coated Steel

Standard Color Coating



RAL 1015



RAL 1019



RAL 3009



RAL 5008



RAL 6005



RAL 6011



RAL 6020



RAL 7032



RAL 7037



RAL 8004



RAL 8012



RAL 8017



RAL 9002

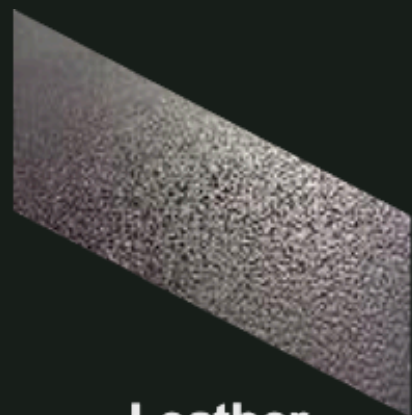


RAL 9006

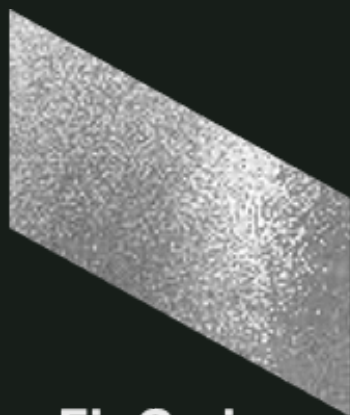


Coated Steel

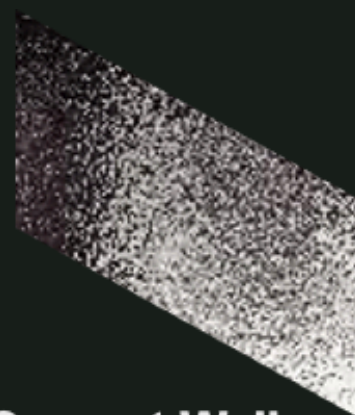
Standard Color Coating



**Leather
Grain**



Fir Grain



**Cement Wall
Grain**



**Pine
Grain**



**Cypress
Grain**



**Yew
Grain**



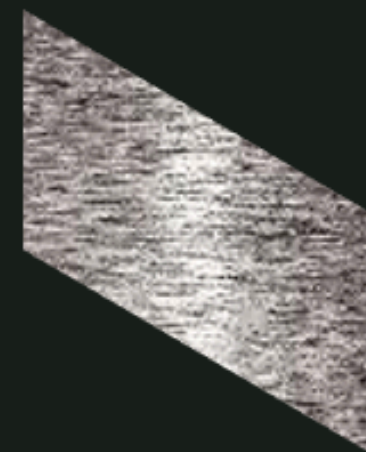
**Marble
Grain**



**Grey Stone
Brick Grain**



**Ottery Stone
Brick Grain**



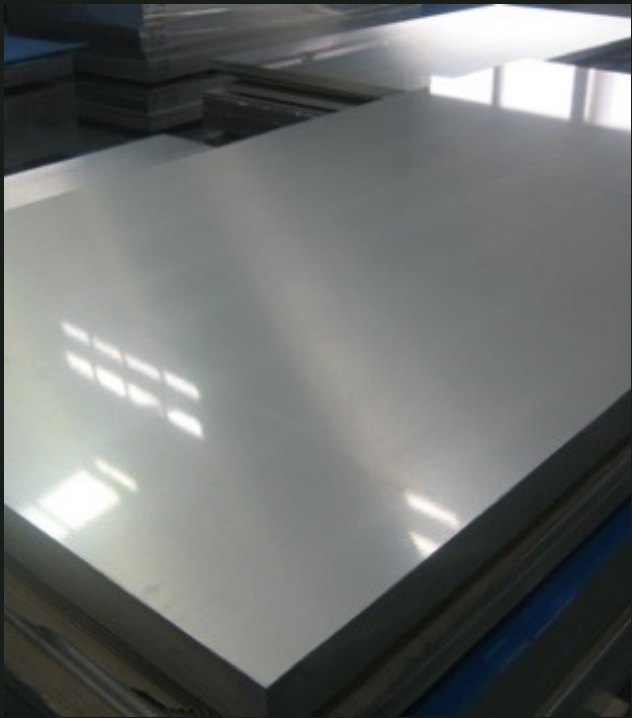
HL

The color presented here differs slightly from the actual color due to printing limitations.
Please refer to our sample panels for a more precise representation of colors.
Other colors are available subject to inquiry.



Aluminum

Aluminum Sheet / Plate Alloy and Temper



Alloy	Temper
1xxx: 1050, 1051A, 1060, 1100	O, H12, H14, H16, H18, H22, H24, H26, H112
3xxx: 3003, 3004, 3005, 3105	O, H12, H14, H16, H18, H22, H24, H26, H112
5xxx: 5005, 5052, 5754, 5083	O, H22, H24, H26, H28, H32, H34, H36, H38, H111, H112
6xxx: 6061, 6082	T4, T6, T451, T651
2xxx: 2014, 2017,2024	T351, T451
7xxx: 7075	T651

Available Size Range			
Dimension	Thickness (mm)	Width (mm)	Length (mm)
Range	0.5 - 6.0 for sheet 6.0 – 120 for plate	900 - 2,200	2,000 - 10,000



Aluminum Strip / Coil

Alloy and Temper



Alloy	Temper
1xxx: 1050, 1051A, 1060, 1100	O, F, H12, H14, H16, H18, H22, H24, H26, H28
3xxx: 3003, 3004, 3005, 3105	O, F, H12, H14, H16, H18, H22, H24, H26, H28
5xxx: 5005, 5052, 5754, 5083	O, F, H22, H24, H26, H28, H32, H34, H36, H38

Dimension	Thickness (mm)	Width (mm)
Range	0.2 - 6.0	200 - 2,200



Aluminum Foil

Alloy and Temper



Alloy	Temper
1xxx: 1050, 1051A, 1060, 1100, 1145, 1235, 1200	O, H14, H16, H18, H19, H22, H24, H26
3xxx: 3003	
8xxx: 8011, 8011A, 8079	O, H18, H19, H22, H24, H26

Dimension	Thickness (mm)	Width (mm)
Available Size Range		
Range	0.006 - 0.2	200 - 1,800



Aluminum Embossed Sheet

Alloy and Temper



Alloy	Temper
1xxx: 1050, 1060, 1100	O, H12, H14, H22, H24
3xxx: 3003	
Available Size Range	

Dimension	Thickness (mm)	Width (mm)	Length (mm)
Range	0.3 - 1.5 for coil 0.5 - 1.5 for sheet	1,000 - 1,500	Coiled, or 2,000 - 4,000



Aluminum Disc Alloy and Temper



Alloy	Temper
1xxx: 1050, 1060, 1070, 1100	O, H14, H24
3xxx: 3003	O, H12, H14, H22, H24
5xxx: 5052	O, H22, H24, H32, H34
6xxx: 6061	O, T4

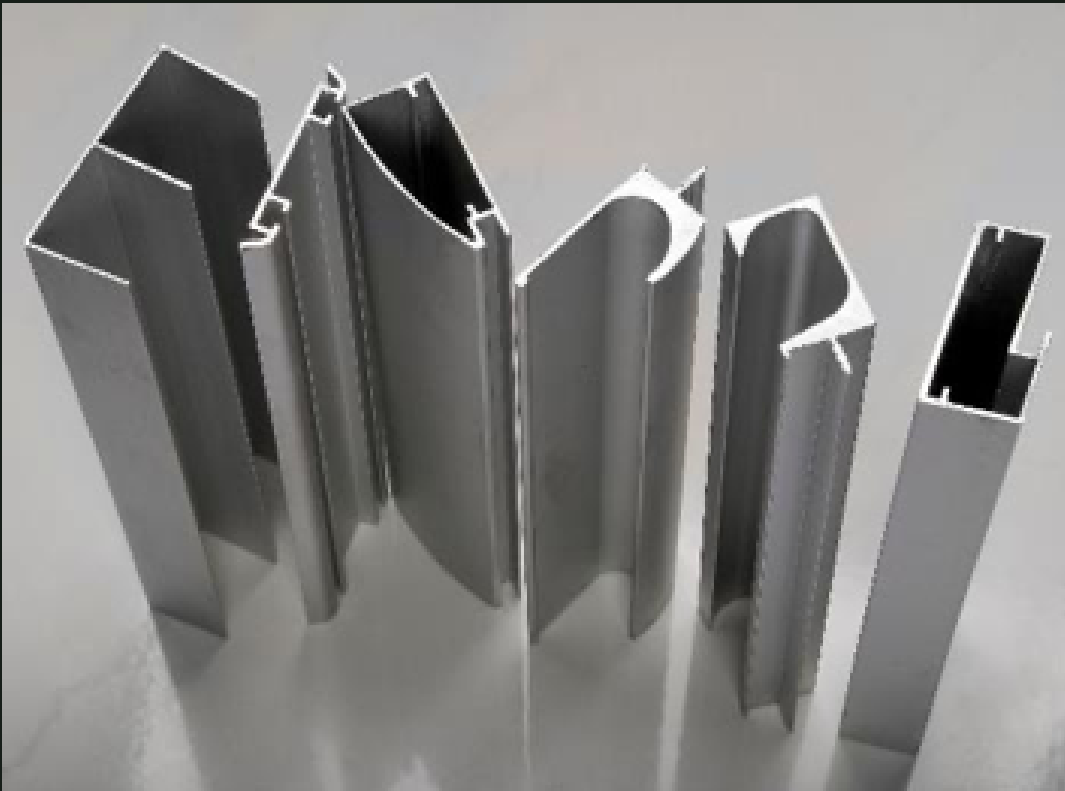
Available Size Range

Dimension	Thickness (mm)	Diameter (mm)
Range	0.5 - 4.0	150 - 1,000



Aluminum Alloy Industrial Extrusion

Alloy and Temper



Alloy	Temper
5xxx: 5052	H112
6xxx: 6005, 6060, 6061, 6063, 6463	T4, T5, T6

Available Size Range

Dimension	Circumscribing Circle (mm)	Length (mm)
Range	<400	1,000 - 6,000



Pipe / Tube

Stainless Steel Welded

Pipes / Tubes

Product Name	Executive Standard	Dimension	Steel Code / Steel Grade
Industrial Pipes	ASTM A312, A358, A778 JIS G3459	OD: 1/4" - 40" WT: SCH5S - SCH80S	TP304, TP304L, TP316L SUS304TP
Tubes for Boiler and Heat-Exchanger, General Service Tubing	ASTM A249, A269 JIS G3463	OD: 15.9 - 139.8 mm WT: 1.6 - 5.0 mm	TP304, TP304L, TP316L SUS304TB
Mechanical and Structural Tubes	ASTM A554 JIS G3446	OD: 7.9 - 152.4 mm WT: 0.5 - 6.5 mm	MT304, MT304L, MT316L, MT430 Grade 201, 202 as per mill's STD SUS304
Square Tubes	ASTM A554	OD: 12.7x12.7 - 150x150 mm WT: 0.7 - 6.5 mm	MT304, MT304L, MT316L, MT430 Grade 201, 202 as per mill's STD



Pipe / Tube

Stainless Steel Welded
Pipes / Tubes

Product Name	Executive Standard	Dimension	Steel Code / Steel Grade
Rectangular Tubes	ASTM A554	OD: 10x20 - 100x200 mm WT: 0.7 - 6.5 mm	MT304, MT304L, MT316L, MT430 Grade 201, 202 as per mill's STD
Sanitary Tubing	ASTM A270 JIS G3447	OD: 25.4 - 165.2 mm WT: 0.8 - 3.05 mm	TP304, TP304L, TP316L SUS304TBS
Large Gauge Pipes for Ordinary Piping	JIS G3448	OD: 15.88 - 318.5 mm WT: 0.8 - 3.0 mm	SUS304TPD
Large Diameter Pipes	JIS G3468	OD: 14" - 40" WT: SCH5S - SCH40S	SUS304TPY



Pipe / Tube

Stainless Steel Welded
Pipes / Tubes

Product Name	Executive Standard	Dimension	Steel Code / Steel Grade
Seamless Austenitic Stainless Steel Pipes	ASTM A312, A312M ASME SA312 / SA312M	OD: 6.0- 914.0 mm WT: 0.5- 88 mm	TP304, TP304L, TP304H, TP310, TP310S, TP316, TP316L, TP316Ti, TP317, TP317L, TP321, TP321H, TP347, TP347H
Seamless Austenitic Stainless Steel Tubing for General Service	ASTM A269 ASME SA269	OD: 6.0- 50.8 mm WT: 0.8- 10.0 mm	TP304, TP304L, TP304H, TP310, TP310S, TP316, TP316L, TP316Ti, TP317, TP317L, TP321, TP321H, TP347, TP347H
Seamless Austenitic Alloy-Steel Boiler, Super Heater and Heat-Exchanger Tubes	ASTM A213 / A213M ASME SA213 / SA213M	OD: 6.0- 50.8 mm WT: 0.8- 10.0 mm	TP304, TP304L, TP304H, TP310, TP310S, TP316, TP316L, TP316Ti, TP317, TP317L, TP321, TP321H, TP347, TP347H



Pipe / Tube

Stainless Steel Welded

Pipes / Tubes

Product Name	Executive Standard	Dimension	Steel Code / Steel Grade
Seamless Duplex Stainless Steel Tubing for General Service	ASTM A789 / A789M	OD: 19.0- 60.5 mm WT: 1.2- 5.0 mm	S31803, S32205, S32750
Seamless Duplex Stainless Steel Pipes	ASTM A790 / A790M	OD: 3/4"- 10" WT: SCH5S- SCH80S	S31803, S32205, S32750
Seamless Stainless Steel Mechanical Tubing	ASTM A511	OD: 6.0- 50.8 mm WT: 0.8- 10.0 mm	MT304, MT304L, MT304H, MT310, MT310S, MT316, MT316L, MT317, MT317L, MT321, MT321H, MT347
Seamless Stainless Steel Tubes for Pressure Purposes	EN 10216 DIN 17456, 17458	OD: 6.0- 914.0 mm WT: 0.5- 88 mm	1.4301, 1.4307, 1.4541, 1.4401, 1.4404, 1.4571, 1.4878, 1.4432, 1.4462



Pipe / Tube

Carbon Steel Welded Pipes / Tubes

Product Name	Diameter	Wall Thickness
Round pipe	12.7 – 3,048 mm	1.0 - 100 mm
API pipe	1/2" - 120"	1.0 - 50.8 mm
Square Hollow Tube	20*20- 500*500	1.0 - 25.4mm
Rectangular Hollow Tube	20*30 - 400*600	1.0 - 25.4mm

Steel Grade

JIS G3444 STK , JIS G3454 STPG, JIS G3452 SGP
BS 1387/ISO 65

AS/NZS 1163/AS1074

EN 10219/EN10217-1/EN10255

ASTM A500/G40.20/G40.21

ASTM A53/SA53/ASTM A795

ASTM A252 /AWS D1.1/CSA W59

API 5L Hydrostatic Test Pressure A/B/X42-X80

API 5CT Hydrostatic Test Pressure H40/J55/K55/N80



Pipe / Tube

Carbon Steel Seamless Pipes / Tubes

Executive Standard	Diameter	Steel Grade
ASTM/ASME A/SA53	1/2" - 48"	GR.B
ASTM/ASME A/SA106	1/2" - 48"	GR.B, GR.C
ASTM/ASME A/SA333	1/2" - 48"	GR.6
ASTM/ASME	1/2" - 4"	A/SA179/SA192/SA210M GR.C, GR.A1
API 5L	1/2" - 48"	GR.B/X42/X52/X60/X65/X70/X80 PSL1/PSL2
API 5CT	1" - 24"	K55, L80, C95, P110, Q125
EN10028	1" - 48"	P235GH, P265GH, P295GH, P355GH P355NH
EN10210	1" - 48"	S235, S275,S355J2