

GLOBAL PORTFOLIO



Table of content

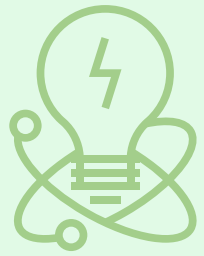
WHAT ARE WE OFFERING?

01	02	03	04	05	06	07	08	09	10
About us	Our point of difference	Business overview	Global reach	Our Design process	Production houses	Adapting to new technology	Sustainability & product upgrades	Audit & compliance	Reach us

Our Company

OUR VISION

Values we share



Innovation



Partnership



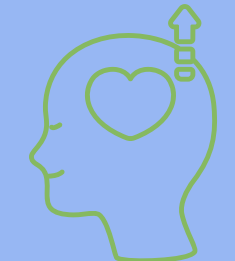
Commitment



Passion



Integrity



Positivity

About us

Design Pod was established in 2007, with a vision of providing end-to-end solution for apparel sourcing/ manufacturing, adapting to the ever-changing market scenarios through constant innovation and a Point Of Difference (POD).

Aim & Mission

To serve our Partners with transparency, sustainability and excel in Quality without compromising health and happiness of any individual associated with the organization.

Who are we?

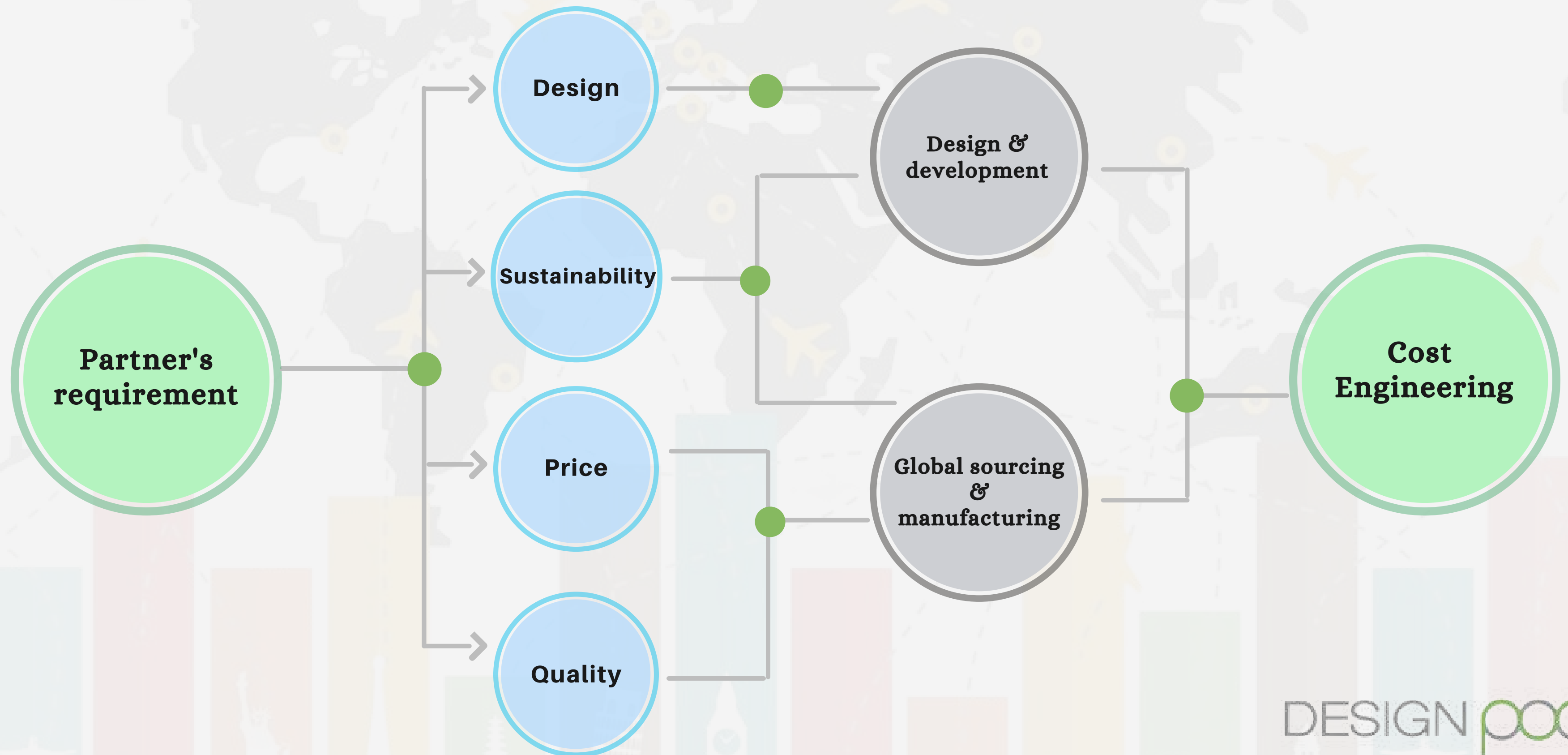
A team of experienced apparel specialists, trained to:

- Design
- Source
- Produce
- Cost engineer

high quality products to suit our partner's need.

Our Point of difference

WHAT MAKES US STAND OUT



Among our Clients



Reliance trends,
India

next

NEXT, UK

ASOS

ASOS, UK



Landmark Group,
Middle East

MELON
FASHION GROUP

Melon fashion,
Russia

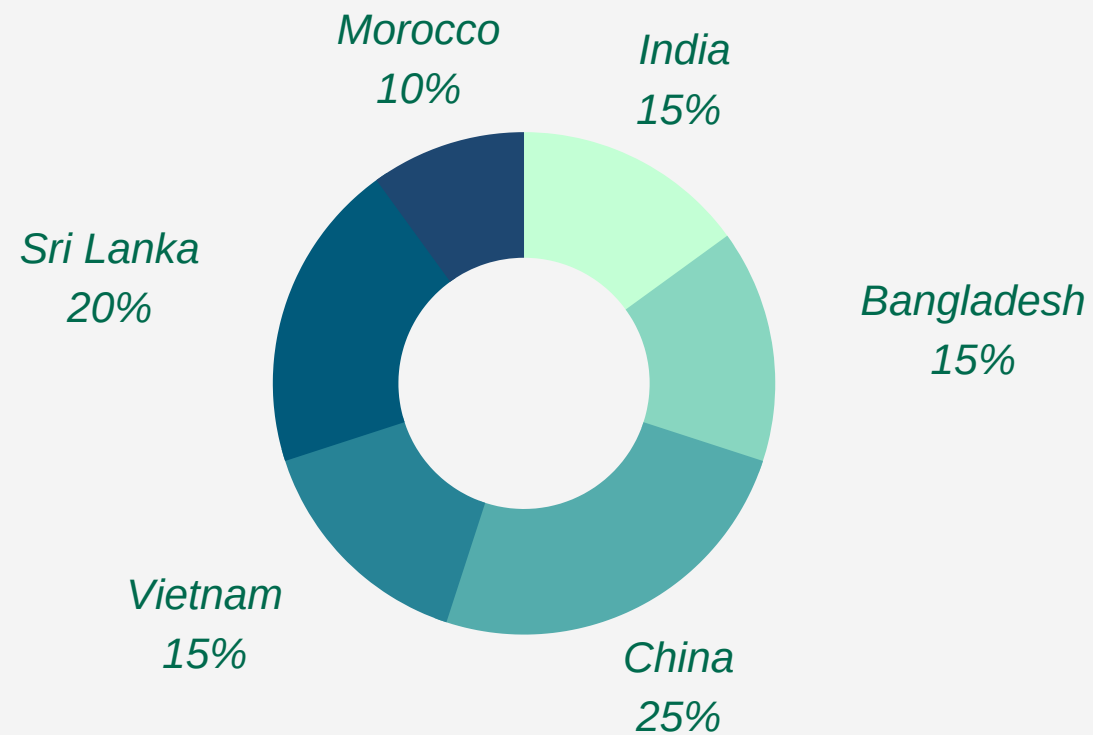
M&Co.
M&Co.
Scotland



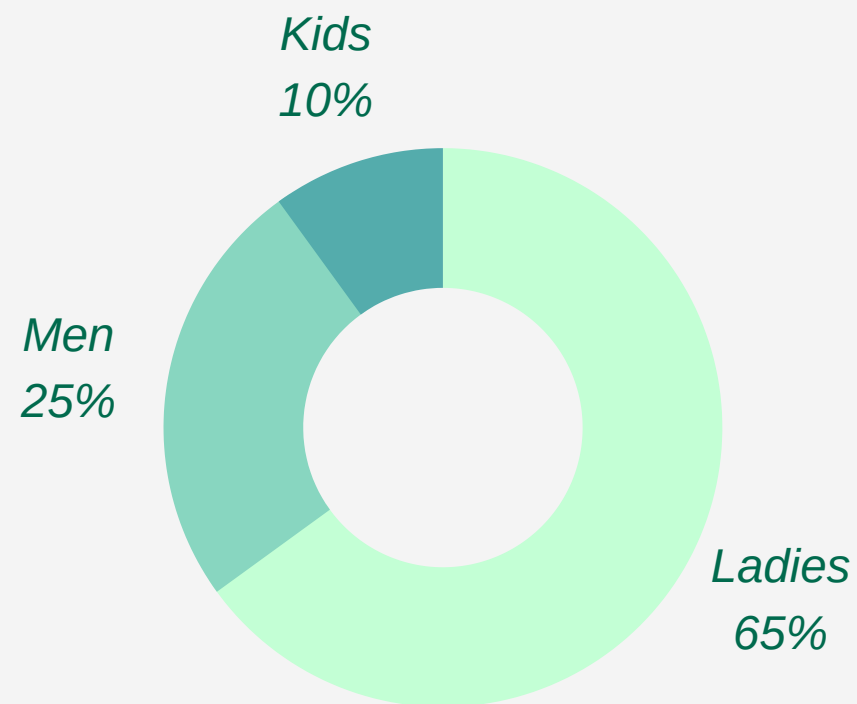
A N O T A H

Anotah, UAE

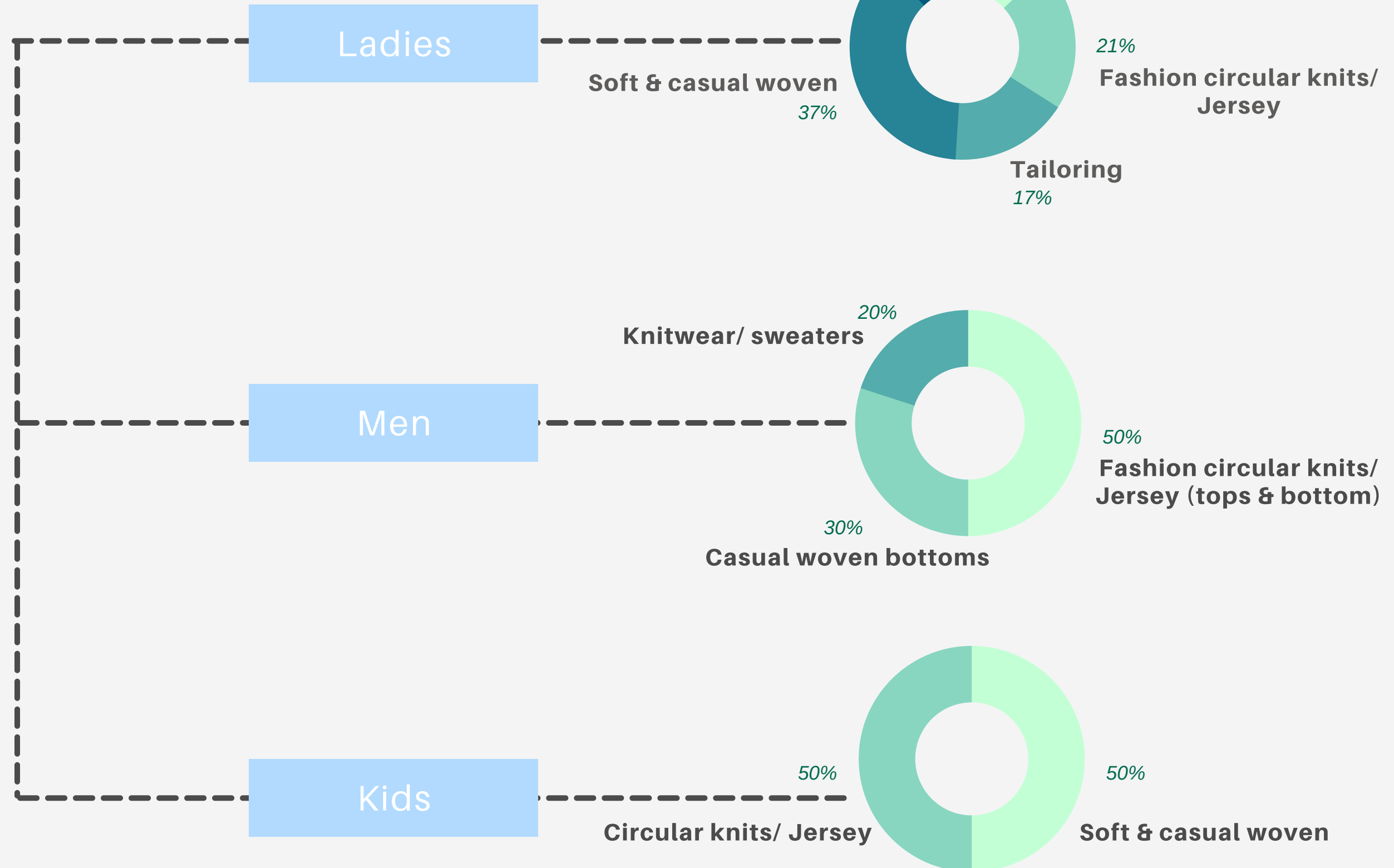
Business Overview



Country Mix



Gender Mix



Our Global Resources

> **Vietnam** - Manufacturing

- Fast track deliveries with Chinese and Korean fabrics.
- State of the art high Quality tailoring at competitive cost.
- Duty free to Russia and India under free trade agreements.

> **India** - Manufacturing

- Value Added Products.
- Competitive cost of production
- Imported Fabrics, conversion for Domestic Market.
- Good Quality washing/laundrying for Casual products.

> **Sri Lanka** - Manufacturing

- Immaculate Needle-Work.
- Fast-Track Logistics to Europe.
- GSP on SAARC fabric usage for Europe.
- Duty-Free to India, SAFTA regulations.
- Competitive, Air Freight to Europe.

> **United Kingdom** - Research & Design

- Raw material procurement for Morocco production.
- Research on new trends in design offering to partners.

> **Bangladesh** - Manufacturing & Sourcing

- Diverse Multi product capability.
- GSP for Europe and Canada.
- Value for Money.

> **China** - Headquarters

- Fast Track Deliveries.
- Diverse product capability.
- Product Development Hub.
- Raw material procurement

> **United Arab Emirates** - Business Development & finance

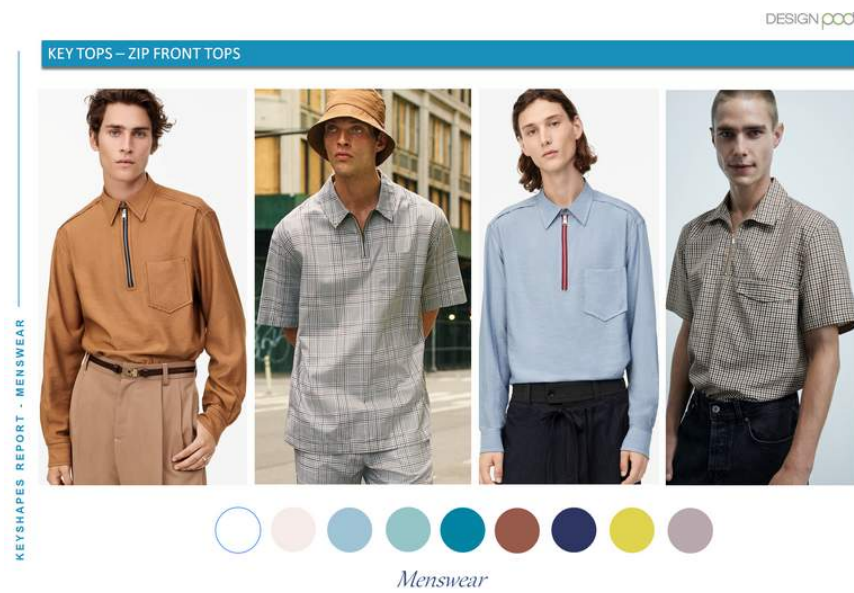
> **Morocco** - Manufacturing

- Fast Track Deliveries to European and UK customers.
- Duty free to Europe and UK.



Our Design Process

In-house trend boards



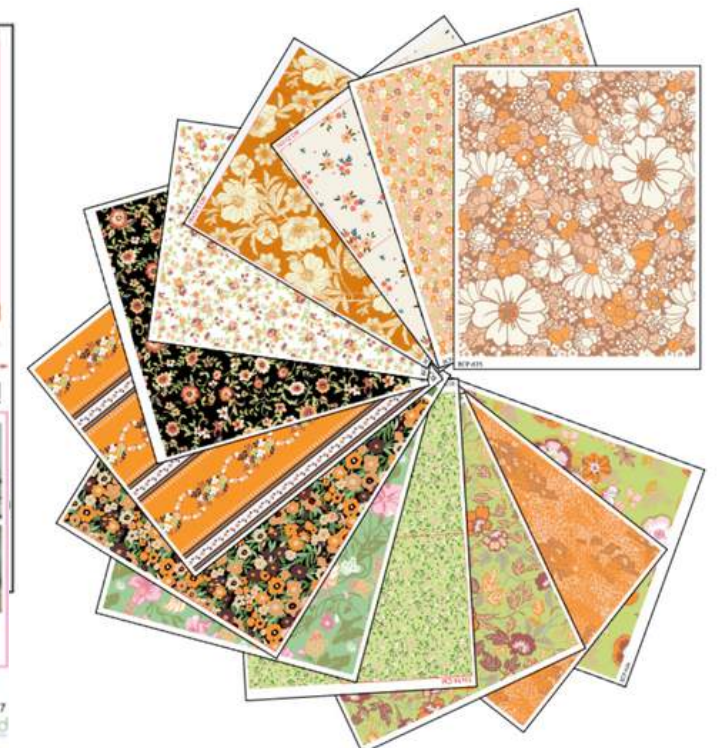
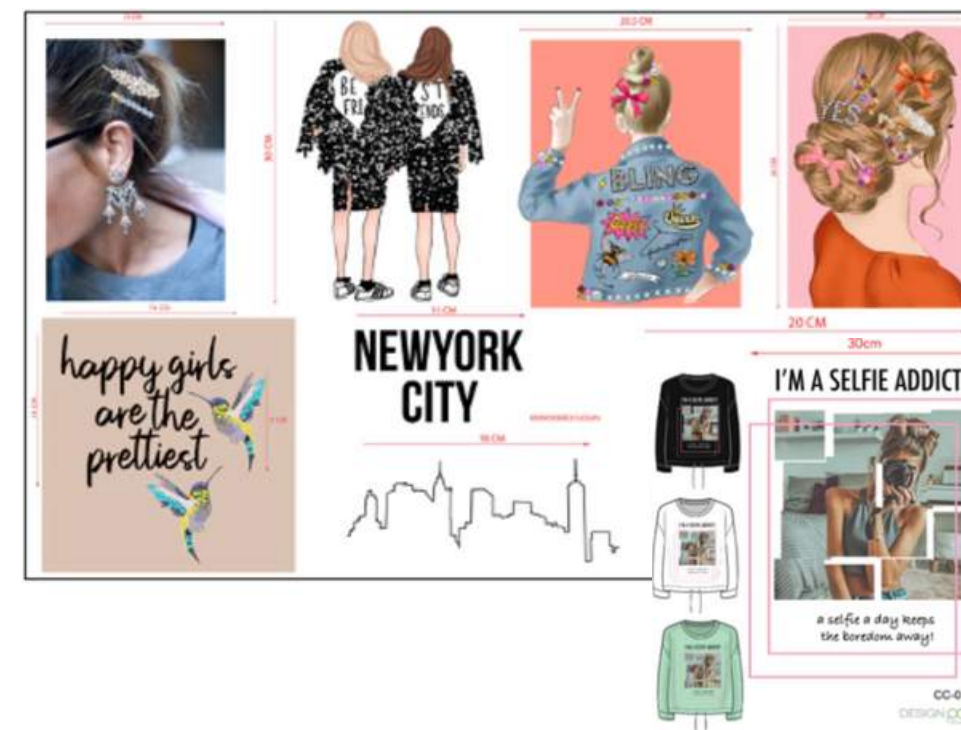
Seasonal key-shape reports



Fabric research & market intel offerings



In-house prints and graphic development

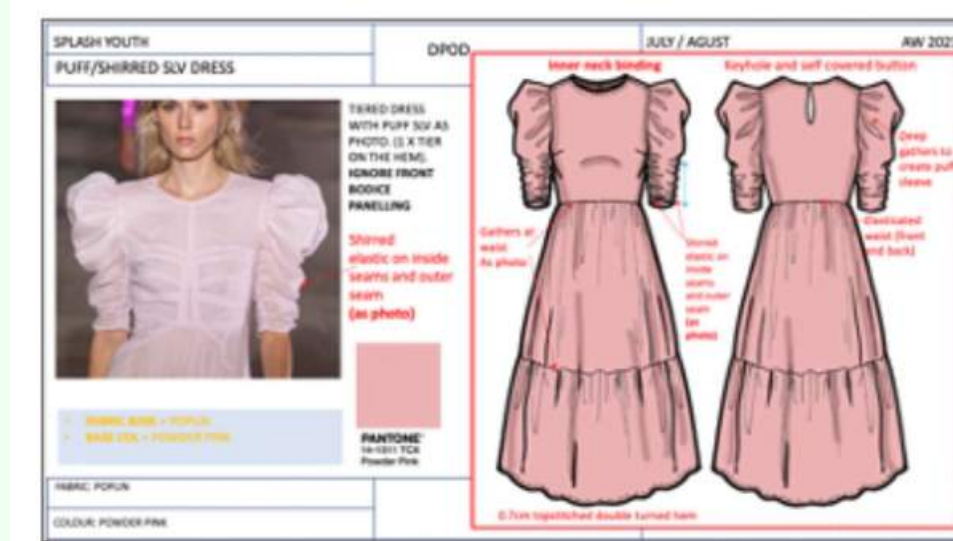


Our Design Process

Product development



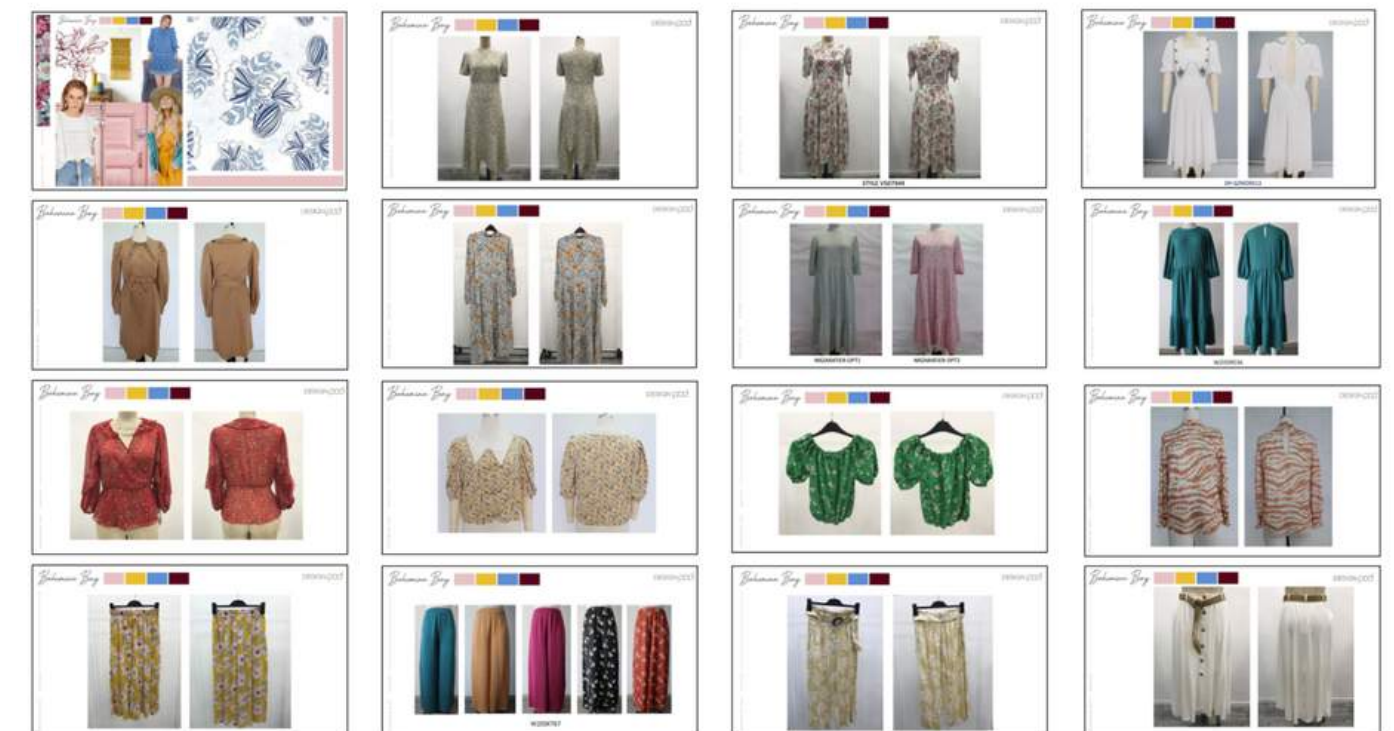
Co-creating with buyers



In-house ranges, design to development



Monthly development reports



Our Production units

COMING SOON

01

Kash garments Ltd.
(Sri Lanka)

Land area: 3700 sqm
Workshop area: 3500 sqm
Production lines: 13
No. of machines: 375
Total workforce: 800
Annual output: 2M pcs
Closest sea port:
Columbo port
Closest airport: Columbo
Int. Airport
Social Compliance:
Sedex, BSCI, C&A, Next
Categories: Formal
bottoms, soft woven

02

Kiara garments Ltd.
(Vietnam)

Land area: 12,000 sqm
Workshop area: 5,000 sqm
Production lines: 18
Total workforce: 800
Annual output: 3M pcs
Closest sea port: Hai
Phong
Closest airport: Noi Bai
Hanoi Airport Intl.
Social Compliance: BSCI,
Higg Index
Categories: Tailored
bottoms, soft woven,
blazer

03

Vogue Exports Ltd.
(Jaipur, India)

Land area: 3000 sqm
Workshop area: 2800 sqm
Production lines: 9
Total workforce: 500
Annual output: 1M pcs
Closest sea port: Kandla -
Nhavasheva Port
Closest airport: Jaipur Int.
Airport
Social Compliance:
Sedex, ISO 9001-2015
Categories: Soft casual
woven, Circular knits

04

**Flores Confecciones
Sarl** (Morocco)

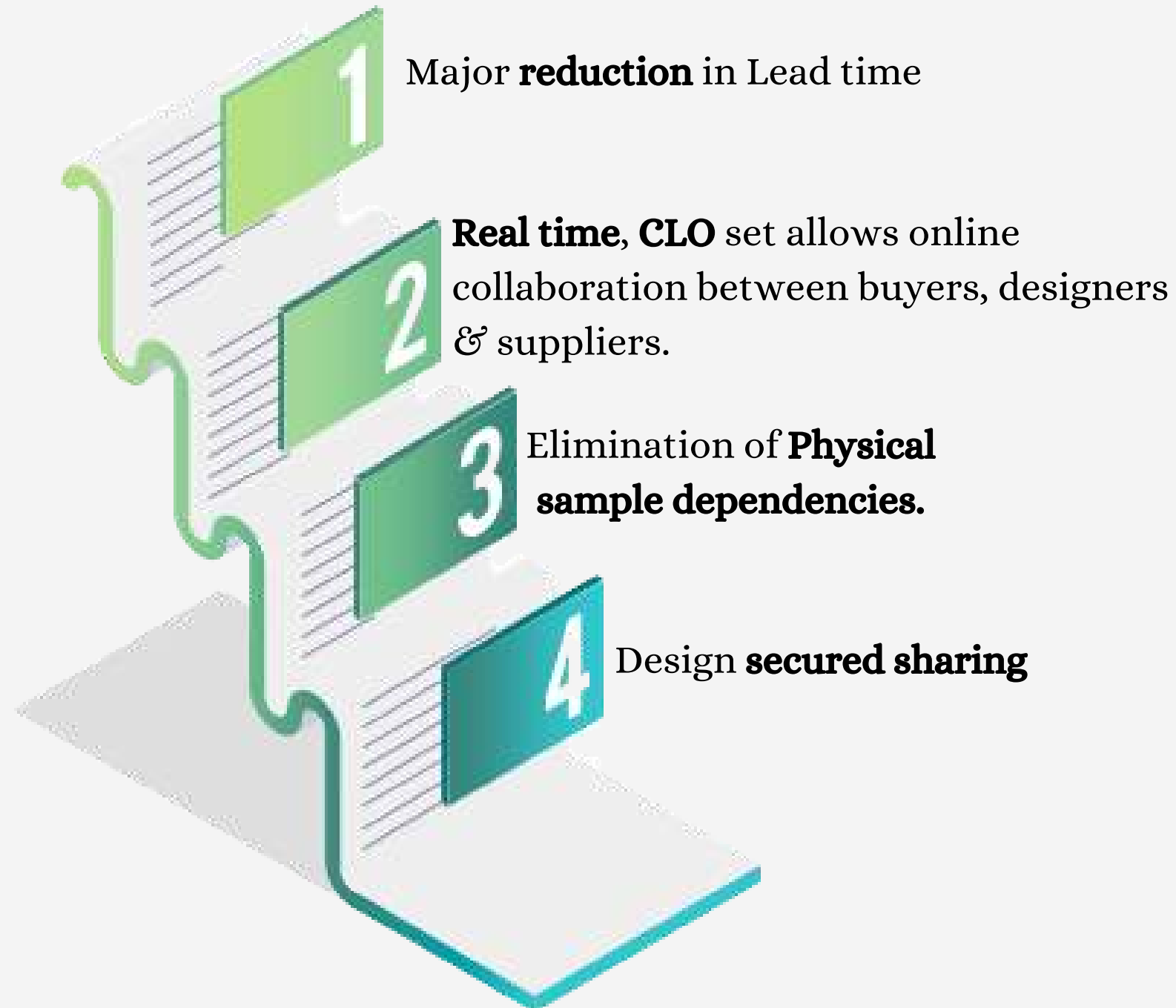
Land area: 2500 sqm (3
storey)
Workshop area: 3000 sqm
Total workforce: 500
Production lines: 10
Annual output: 1M pcs
Closest sea port: Tangier
Port Med
Closest airport: Ibn
Batouta Tangier Airport
Social Compliance:
Sedex, BSCI

05

Auro Design Ltd.
(Jaipur, India)

**State of the art
Gold Lead Certified Green
Factory**
Land area: 4100 sqm
Workshop area: 4000 sqm
Total workforce: 500
Production lines: 9
Annual output: 1.5M pcs
Closest sea port: Mumbai
Closest airport: New
Delhi/ Jaipur Airport
Categories: Semi- formal
bottoms, soft woven
garments

Adapting to new Technology



3D innovation

Based on the current emerging trends and technologies in Fashion Retail Business, DESIGN POD has taken a big leap to do **PoC of CLO 3D Software.**



Artificial Intelligence

In the process of engaging with an AI platform which will help us to improve our product and design offering along with **cost engineering based on data** from across the globe.

Sustainability & Product upgrades

Proudly, 'Design Pod' source and produce **70% of our volume under Sustainable Practices**. 'Sustainability' is one of our core business values and we continue to **Learn / Approach / Adapt** to new-innovations towards the betterment of Planet Earth.



100% **BCI**
or Organic Cotton



Usage of **recycled - polyester** from certified sources such as Unifi.



Maximized usage of **recycled paper & packaging material** for daily activities.



Partnered with Lenzing & Birla to increase usage of **cellulose sustainable fibres**.



Reduction in usage chemicals & water at laundry processes by substituting them with **natural plant based extracts**.

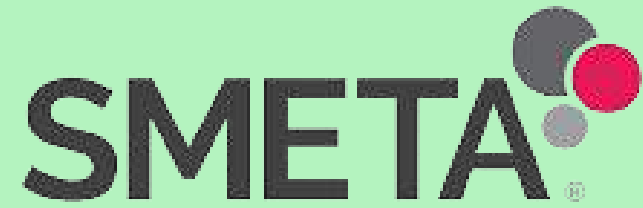


Synthetic blended fabrics, finished by miDori Biowick. **sustainable cotton & viscose fabric**, finished by miDori BioDry & miDori Biosoft.



Learning from the current pandemic, we are treating our product with **anti-bacterial and anti-viral technology**.

Audit & compliance



SMETA



BSCI
Business Social Compliance Initiative



Sedex®



ACCORD
on Fire and Building Safety in Bangladesh



WORLDWIDE RESPONSIBLE
WRAP
ACCREDITED PRODUCTION®

Safe manufacturing
environments

No child labour

Fair trade
standards

Active reduction
of environmental
impact

Compliance with
all relevant
regulatory
ordinance.

Reach us at

China

- Headquarters

📍 Unit 2101-2111, No.22, 118 Lane,
Zhongjiang Rd, Puoto District,
Shanghai, China-200062

☎ +86 021 62581026

Dubai

- Business Development

📍 Office 502, Jumeirah Business
Center 3, Cluster Y, Jumeirah
Lake Towers, Dubai,
UAE

☎ +971 45726373

London

- Research & Design

📍 9 Noel Street, Waverly House,
London, UK - W1F8GQ

☎ +44 750 6192 180

OUR EMAIL: info@dpoddxb.com

OUR WEBSITE: www.dp-global.com