

STANDARD FEAUTURES  
CREEKSIDE MANOR STANDARDS

06195000

CONSTRUCTION

- 8' Flat Ceiling Throughout
- 12" Eaves Hitch End Only
- 20# Roof Load
- 2x4 Exterior Walls
- 2x6 Floor Joists 16" on Center
- 3/12 Roof Pitch
- 5/8" Tongue & Groove Floor Decking
- Nominal Eaves Sides & Rear
- R-11 Floor Insulation
- R-13 Wall Insulation
- R-22 Ceiling Insulation

EXTERIOR

- 32" In-swing 9-Light Rear Door
- 36" In-swing Front Door
- 4" Cemplank® Window Trim
- Cement Facia
- Cement Perforated Soffit
- Cement Vertical Siding
- Architectural Shingles
- Low "E" Dual Glaze Windows Throughout
- Shutters Hitch & Front Door Side - Single Wides Only
- Standard Front & Rear Porch Lights

PLUMBING/HEATING/ELECTRICAL/UTILITY

- 100 AMP Electrical Service
- 30 Gallon Electric Water Heater
- Carbon Monoxide & Smoke Detectors
- Cement Water Heater Door with Hinges
- Exterior GFI Receptacle
- Gas Forced Air Furnace
- Shutoff Valves Throughout
- Wire Shelf Over Washer & Dryer
- Wire & Vent for Electric Dryer
- 6" LED Can Lights Throughout

INTERIOR

- 6# Rebond Carpet Pad
- Metal Mini Blinds
- 3" Baseboard Throughout
- 6-Panel Interior Doors
- Brushed Nickel Lighting & Hardware Throughout
- Carpet in Closets Throughout
- Linoleum in Kitchen, Dining, Baths & Utility
- Simply Stated Carpet
- Standard Heat Registers Throughout
- T&T Throughout with Rounded Corners
- Wire Vented Shelving Throughout
- White 2-1/4" Door Case Molding

KITCHEN

- Granite Counters with Single Eased Edge
- 4" Granite Backsplash
- Stainless Steel Under-Mount Sink
- Lined Overhead Cabinets
- Brushed Nickel Faucet
- Bank of Drawers
- MDF Cabinet Doors

- Cabinet Over Refrigerator

APPLIANCES

- 18 CF Frost Free Refrigerator
- 30" Vented Range Hood with Light
- Deluxe Gas Range

BATHS

- Granite Counters with Single Eased Edge
- 4" Granite Backsplash
- Under-Mount Bath Sinks
- Brushed Nickel Faucets & Hardware
- 1-Piece Fiberglass Tub/Shower

UPGRADE PACKAGES

MEADOWVIEW  
ESTATES PACKAGE

(INCLUDES CREEKSIDE MANOR STANDARDS)

- 40 Gallon Gas Water Heater
- 5 Recessed Can Lights in Kitchen
- Adjustable Overhead Shelves
- Cabinet Over Refrigerator
- Deluxe Window Trim -Hitch and Front Door Side
- Deluxe Dining Room Chandelier
- Deluxe Cabinet Molding
- Deluxe Front Porch Light
- Elongated High-Rise Toilets
- Finished Base Cabinet Interiors
- Hardwood Flat Panel Cabinet Doors
- Lighting Over Bathroom Mirrors
- Satin Nickel Lever Passage Door Handles
- Satin Nickel Single Lever Faucets Throughtout
- Toe-Kick Heat Registers in Wet Areas
- Wood Trim Around Bath Mirrors

NAPA ESTATES PACKAGE

(INCLUDES MEADOWVIEW ESTATES STANDARDS)

- 9' Flat Ceiling Throughout
- 11x36 Slider Window in Master & Guest Baths
- 2" Fauxwood Blinds Throughout
- 42" Overhead Cabinets
- 80" Windows Throughout
- Cabinet Over Washer & Dryer w/ Wood Rod & Shelf
- Craftsman Window Trim - Hitch & Front Door Side
- Macrame Carpet
- Wood Closet Rods & Shelves Throughout

REDMAN  HOMES.

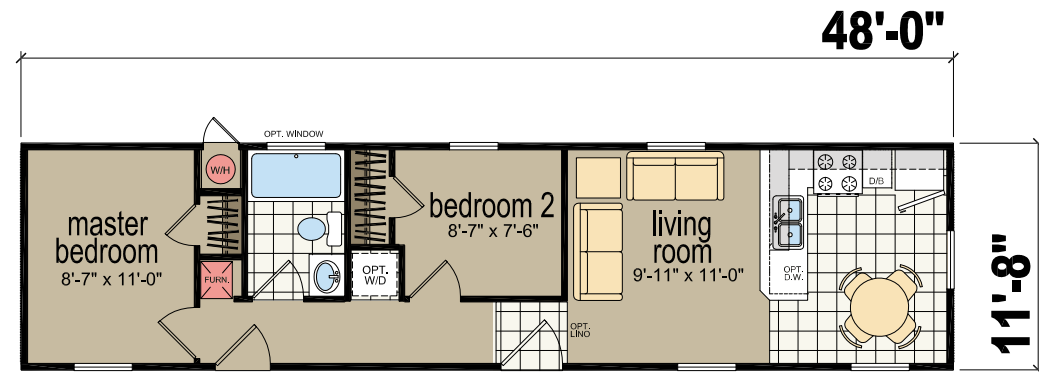
CHAMPION®  
HOME BUILDERS

SINGLE-SECTION  
HOMES

MODELS AVAILABLE IN CREEKSIDE MANOR,  
MEADOWVIEW ESTATES OR NAPA ESTATES PACKAGES.

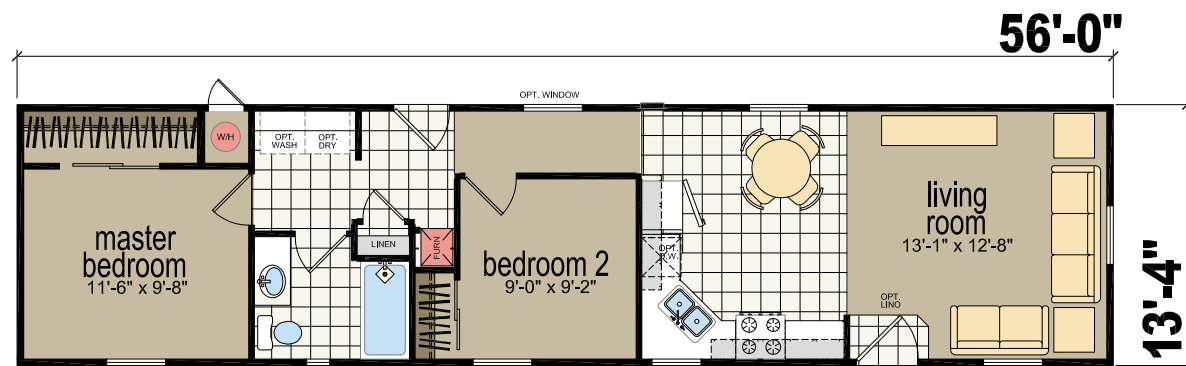
REDMAN  HOMES®

MODEL  
1482D

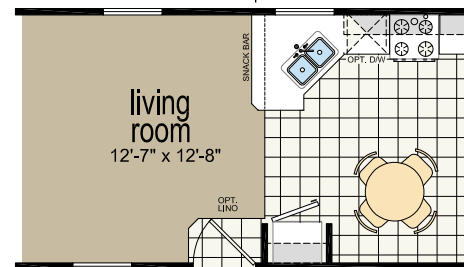


2 BED- 1 BATH | 560 SQ.FT.

MODEL  
2562L

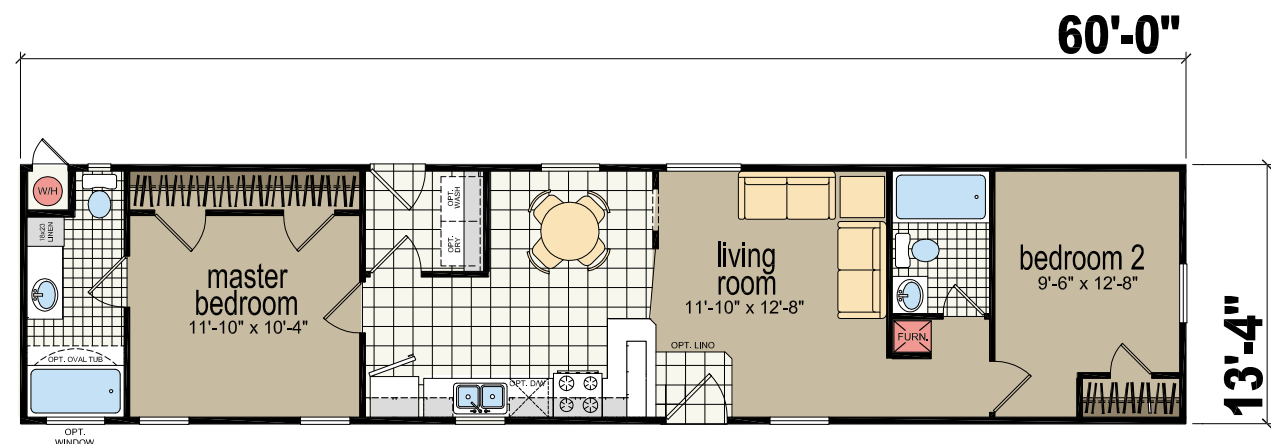


2 BED- 1 BATH | 747 SQ.FT.



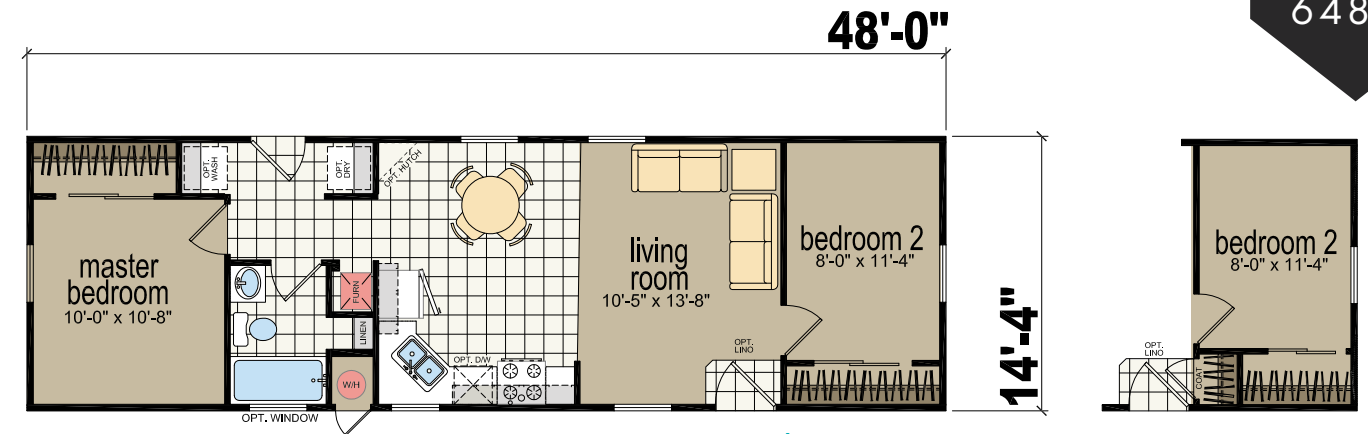
09-CM-2562L OPTIONAL KITCHEN

MODEL  
2602B



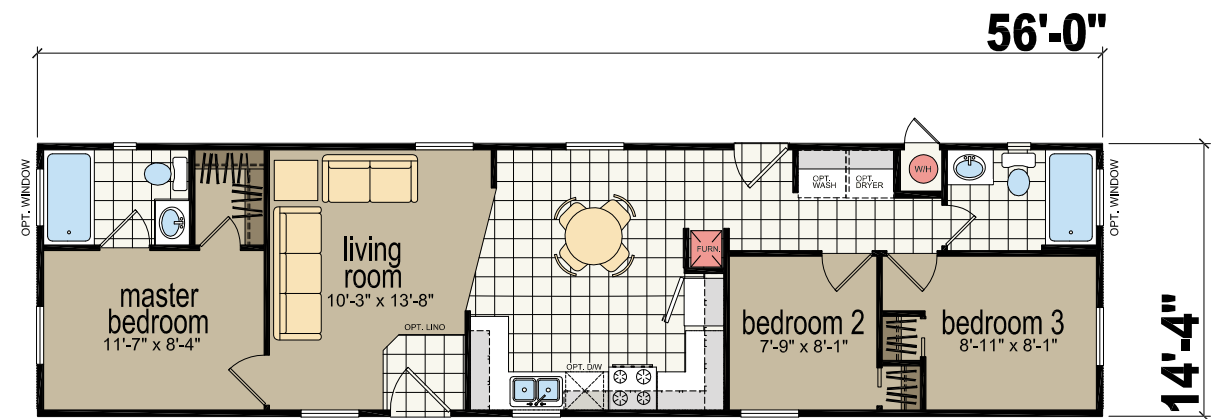
2 BED- 2 BATH | 800 SQ.FT.

MODEL  
6482B

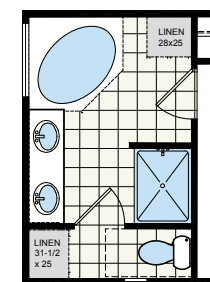


2 BED- 1 BATH | 688 SQ.FT.

MODEL  
6563B

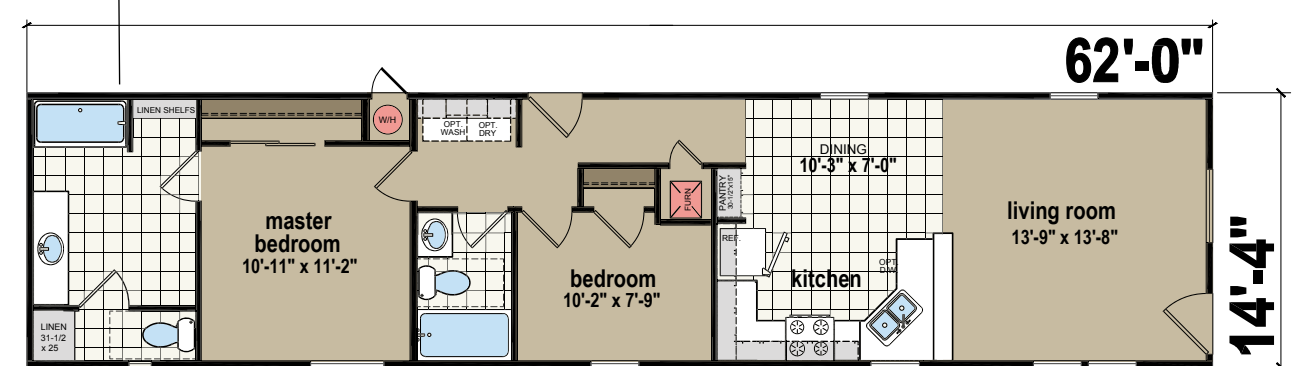


3 BED- 2 BATH | 803 SQ.FT.



OPT. BATH

MODEL  
6622L



2 BED- 2 BATH | 889 SQ.FT.