

# CoreBoot

## PVC to Concrete Pipe and Wall Connector

Stop leaks. Prevent pipe movement. Pass inspection.

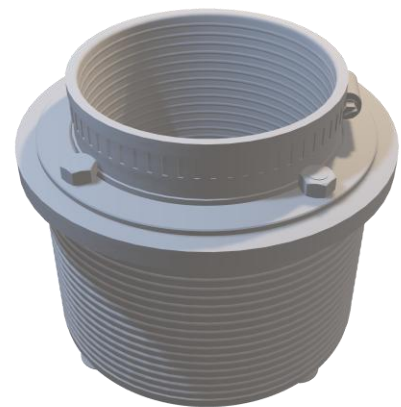
Engineered Watertight Seal for PVC-to-Concrete Pipe and Wall Connections.



### WHY COREBOOT

Built from real field failures — designed to eliminate them.

- **Watertight Seal**  
Mechanical compression creates a consistent seal that resists groundwater infiltration
- **Prevents Pipe Movement & Settlement Issues**  
Internal rib system secures PVC pipe and reduces risk of shear at the connection
- **Eliminates Gasket Pullout**  
Exterior friction ribs lock the boot into the concrete structure during backfill and long-term settlement
- **Consistent Installation Every Time**  
Integrated stop ring ensures proper depth and reduces installer error



- **Corrosion-Resistant Hardware**  
304 / 316 stainless steel components provide durability in aggressive environments
- **Built for Long-Term Performance**  
EPDM rubber resists chemicals, groundwater, and environmental exposure

*Mechanical compression design provides greater resistance to pipe movement compared to rubber-only connection systems.*

## Applications

Designed for civil construction and plumbing applications:

- Sanitary and storm lateral connections
- Catch basin leads
- Cored manhole and structure connections
- Pipe penetrations into chambers and foundation walls

## HOW COREBOOT WORKS

CoreBoot uses a mechanically fastened compression system to actively seal and secure the connection.

As bolts are tightened:

1. **Gasket expands into concrete interface**
2. **Compression plates apply uniform sealing pressure**
3. **PVC pipe is locked in place and sealed**

### **Result:**

A connection that resists leakage, movement, and long-term failure — even under settlement and backfill loading.

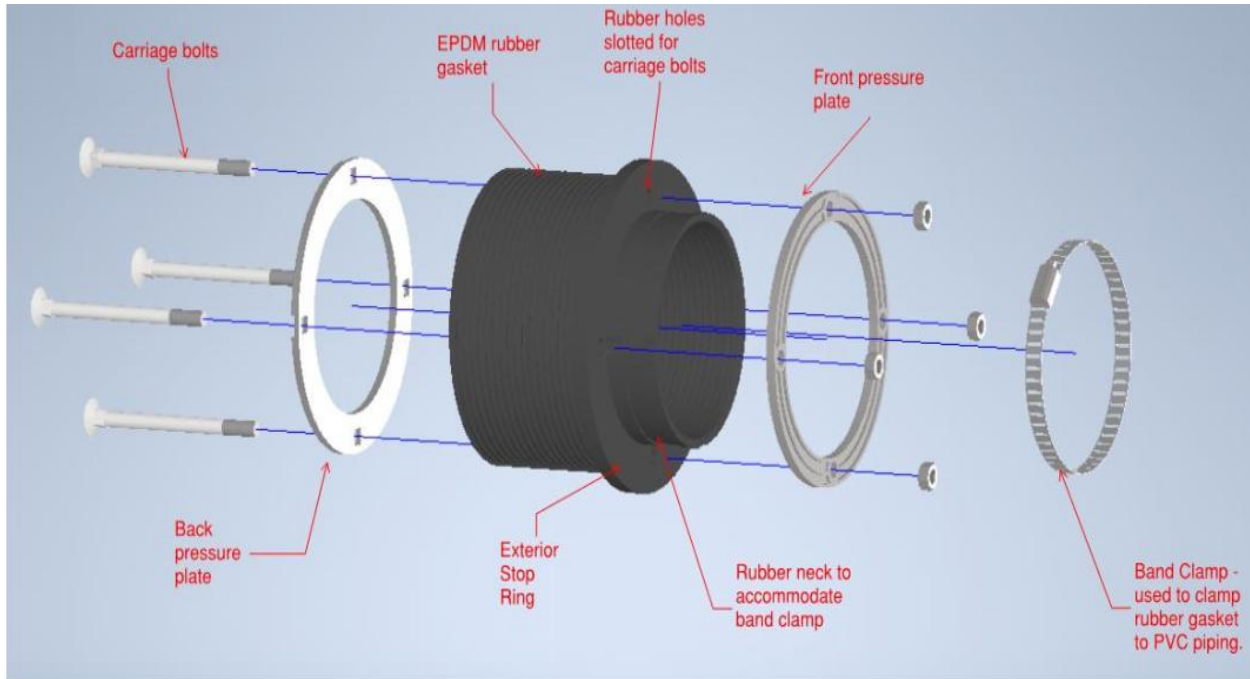
## DESIGN OVERVIEW

Key components engineered for performance:

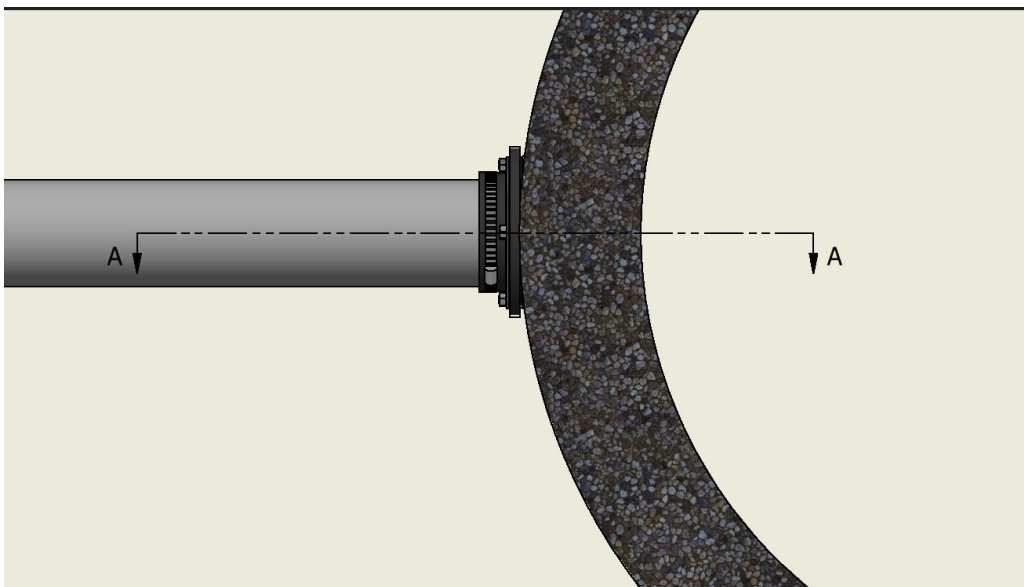
- **Outer Stop Ring** – Prevents over-insertion into concrete
- **Exterior Friction Ribs** – Resist pullout during backfill and settlement
- **Interior Sealing Ribs** – Secure PVC pipe and maintain seal integrity

- **Inner Stop Ring** – Controls pipe insertion depth (*removed for wall applications*)
- **Stainless Steel Compression Plates & Fasteners** – Ensure uniform pressure

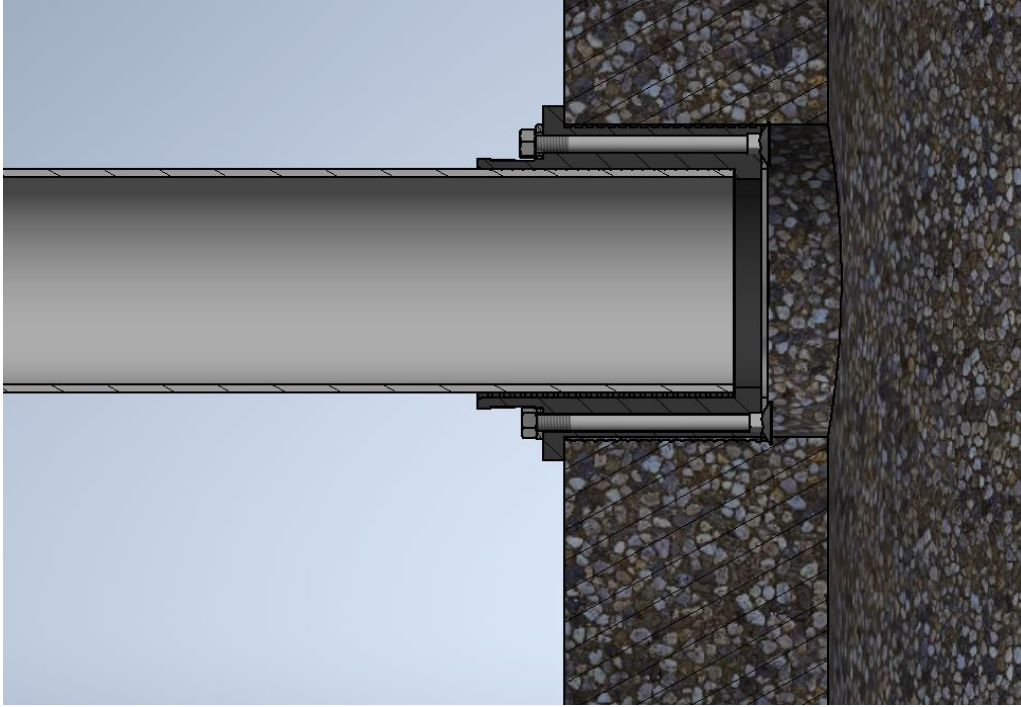
**Gear Clamp** – Final seal between CoreBoot and PVC pipe



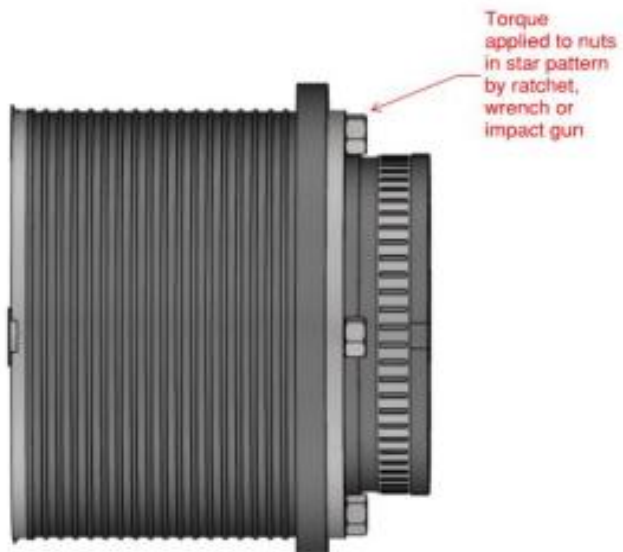
**Cross Sections:**



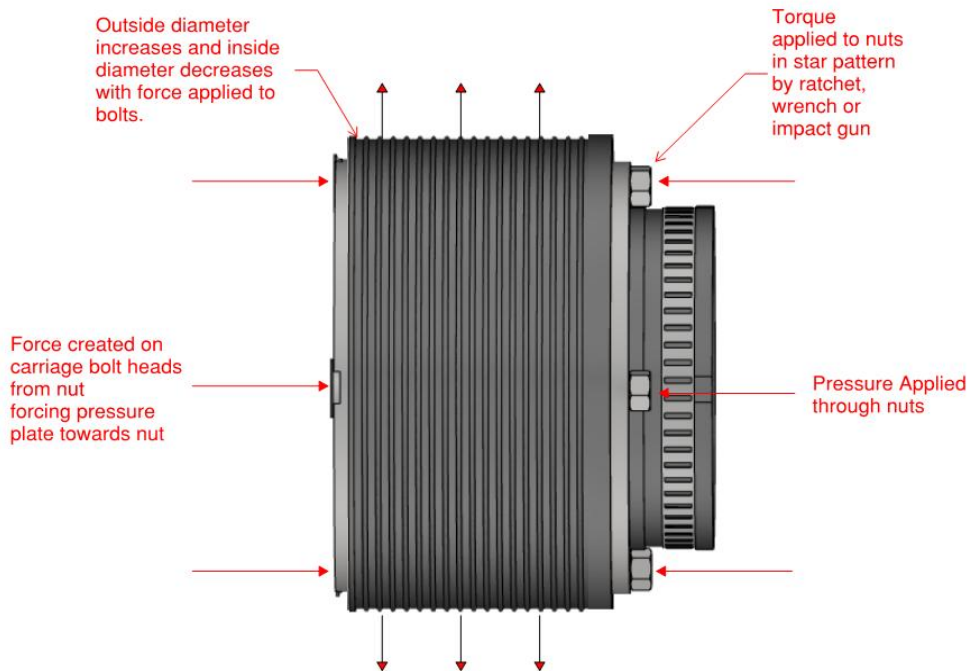
**Section A-A**



**Before bolts are tightened**



## After bolts are tightened



## **INSTALLATION (FIELD-PROVEN PROCESS)**

1. **Core drill hole** to specified size (see chart below)
2. **Inspect and patch surface** if required (smooth, clean interface)
3. **Insert CoreBoot** flush to concrete surface
4. **Tighten bolts in star pattern** until snug
5. **Insert PVC pipe** to internal stop ring
6. **Final tighten bolts** until slight plate deflection is achieved
7. **Tighten gear clamp**
8. **Confirm no movement** — installation complete

<b>Drill &amp; Pipe Size Chart</b>				
<b>CoreBoot Size</b>		<b>Accepted PVC Pipe Type</b>	<b>Core Drill Size</b>	<b>Installation Tools Required</b>
Imperial	Metric			
4"	100mm	4" DR28, DR35	6"	1/2" Socket, 5/16" nut driver
5"	125mm	5" DR28, DR35	8"	1/2" Socket, 5/16" nut driver
6"	150mm	6" DR28, DR35	9"	1/2" Socket, 5/16" nut driver
8"	200mm	8" DR35	11"	1/2" Socket, 5/16" nut driver
10"	250mm	10" DR35	13"	1/2" Socket, 5/16" nut driver
12'	300mm	12" DR35	15"	1/2" Socket, 5/16" nut driver

### **IDEAL FOR**

- Municipal sewer and storm systems
- Infrastructure rehabilitation and new installs
- Contractors looking to reduce callbacks and failures due to leaking laterals and leads.

### **FIELD-PROVEN PERFORMANCE**

Developed from real installation challenges in civil construction, CoreBoot delivers a repeatable, inspection-ready connection that performs under:

- Backfill loading and compaction
- Pipe settlement conditions
- Groundwater infiltration
- Long-term service environments

### **AVAILABILITY & SUPPORT**

Available through approved distributors or direct supply.

#### **For pricing, technical support, or product approvals:**

Icon Sewer Technologies Inc.

[jackson@iconsewer.com](mailto:jackson@iconsewer.com)

226-234-6428

<https://iconsewer.com/>