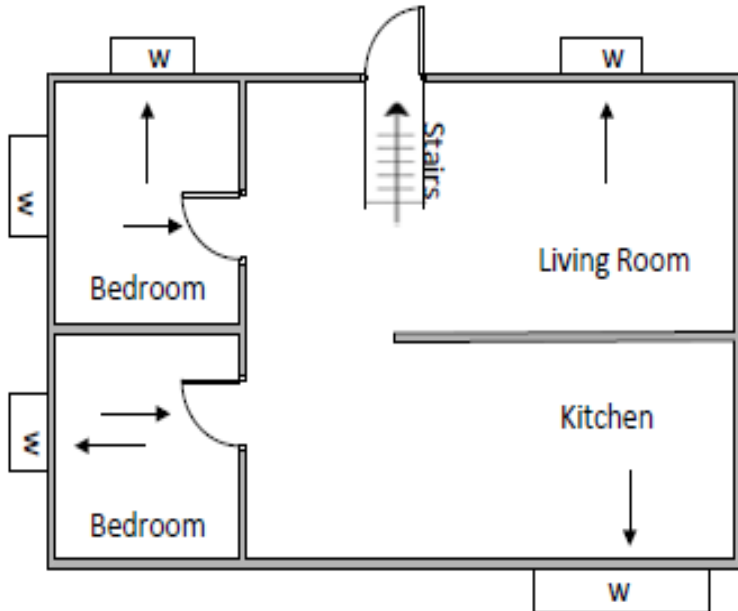


FOSTER CARE EMERGENCY ESCAPE PLAN

EMERGENCY PHONE NUMBERS:	
Emergency:	911
Poison Control:	1-800-222-1222
Non-emergency:	
Police Department:	_____
Fire Department:	_____

1. Use the grid, blank paper, or other resources (e.g. online websites) on the next page to draw a floor plan of each floor of your home.
2. Each room will need two exits identified.
3. Use arrows to show both of the emergency evacuation routes.
4. In a building with three or more dwelling units, enclosed exit stairs must be indicated.
5. Make sure the plan is clear and easy to follow/read.



Family Name _____

Designated place to meet outside to determine if anyone is missing:

Designated place to meet during a storm or tornado: _____

Designated temporary shelter if needed: _____

Fire Extinguisher Locations: _____

Smoke Detector Locations:

- Basement or Lower Level _____
- Main Floor or Upper Level _____
- Second Floor _____

CFC ONLY:

If a child placed in my home is at risk of starting fires I/we will comply with the following:

- Lock/remove all fire starting objects
- Discuss with the case manager a supervision plan
- Other _____

By initialing here I/we agree to the above plan _____

FOSTER CARE EMERGENCY ESCAPE PLAN

A large grid of graph paper, consisting of 30 columns and 25 rows of small squares, intended for drawing an emergency escape plan.