

Partnership for Gulf Coast Land Conservation



2022 Annual Report



GULF PARTNERSHIP MEMBERS

LOCAL, STATE, AND REGIONAL ORGANIZATIONS:

- (AL) Alabama Coastal Heritage Trust
- (AL) Alabama Forest Resources Center
- (FL) Alachua Conservation Trust, Inc.
- (AL) Coastal Land Trust
- (TX) Colorado River Land Trust
- (FL) Conservation Florida
- (FL) Conservation Foundation for the Gulf Coast
- (AL) Dauphin Island Bird Sanctuaries
- (FL) Florida's Nature Coast Conservancy
- (TX) Galveston Bay Foundation
- (TX) Katy Prairie Conservancy
- (LA) Land Trust for Louisiana
- (MS) Land Trust for Mississippi Coastal Plain
- (MS) Mississippi Land Trust
- (FL) Tall Timbers
- (TX) The Artist Boat
- (AL) South Alabama Land Trust
- (LA) Woodlands Conservancy

NATIONAL ORGANIZATIONS:

- American Farmland Trust
- National Audubon Society, Inc.
- The Conservation Fund
- The Nature Conservancy
- The Trust for Public Land
- Ducks Unlimited

ADVISORS:

- Gulf of Mexico Alliance
- United States Fish and Wildlife Service
- Land Trust Alliance
- National Oceanic and Atmospheric Administration

MESSAGE FROM THE EXECUTIVE DIRECTOR



Greetings from the Gulf Partnership, and what an exciting year it has been! In addition to being a whirlwind first year at the helm, we've seen the Gulf Partnership blossom into its own 501(c)(3) organization. It's taken a decade to get to this point, and many thanks to all our members, advisors and conservation partners for making make this possible. Also, a special thank you to Liz Barber and Julia Weaver, who co-led the organization from its founding, and whose tireless effort made the work we've achieved possible. It feels rejuvenating to have grown to this point, and I for one, am glad that we were able to finally celebrate this achievement and many others at our Annual Conference in New Orleans this year.

The Gulf Coast is such a unique and wonderful place, and as I reflect on my initial experiences of 2022, I'm reminded of the diversity of work accomplished by our members. Our goal this year was to provide landscape-level engagement, and this partnership serves as the thread weaving these activities across the landscapes, creating a tapestry of conservation achievements that stretches for over 1,680 miles. We saw 30% growth in our Conservation Newsletter since late 2021 and held our first in-person conference in over 3 years in September. We also saw the launch of the newly created Strategic Conservation Vision (SCV), a geospatial mapping tool aimed to identify high-priority areas for conservation. The rollout of our long-awaited Project Assistance Fund began this year, with the anticipated conservation of over 25,000 acres throughout the Gulf coast.

Looking ahead, we hope to continue refining that tapestry, adding new threads of conservation that provide landscape-level benefits to our partners working on the ground. The collective gains of the conservation community will help elevate the Gulf Partnership and further serve our mission. Thank you to each of our members and being a part of our effort to build a regional voice for the conservation community in the Gulf. The needs have never been greater, and we look forward to the continued success ahead.

Thank you,

A handwritten signature in black ink, appearing to read 'Vance Crain'.

Vance Crain
Executive Director

Gulf Partnership CONNECTING THE REGION



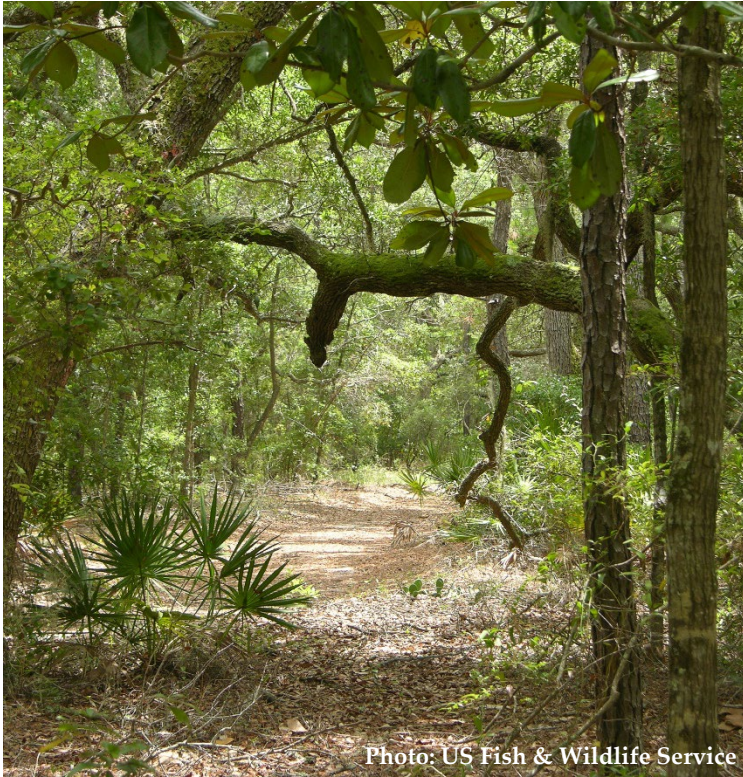
GULF PARTNERSHIP CONFERENCE SEPTEMBER 13TH, 2022, NEW ORLEANS, LOUISIANA

This year brought back the start of our Annual Conference. After a 3-year hiatus, it was great to meet our conservation partners across the Gulf, and what a great turnout! With over 25 incredible speakers, engaging sessions, and a wonderful New Orleans venue, attendees could learn, be inspired, and network with colleagues. This year's event was also coordinated with the Land Trust Alliance Rally, turning it into a weeklong event for our conservation partners.

Additionally, the Gulf Partnership renewed its Conservation Newsletter monthly engagement efforts. Since late 2021, we've seen a growth of over 30% in our contact list and are hoping for continued growth in the coming years.

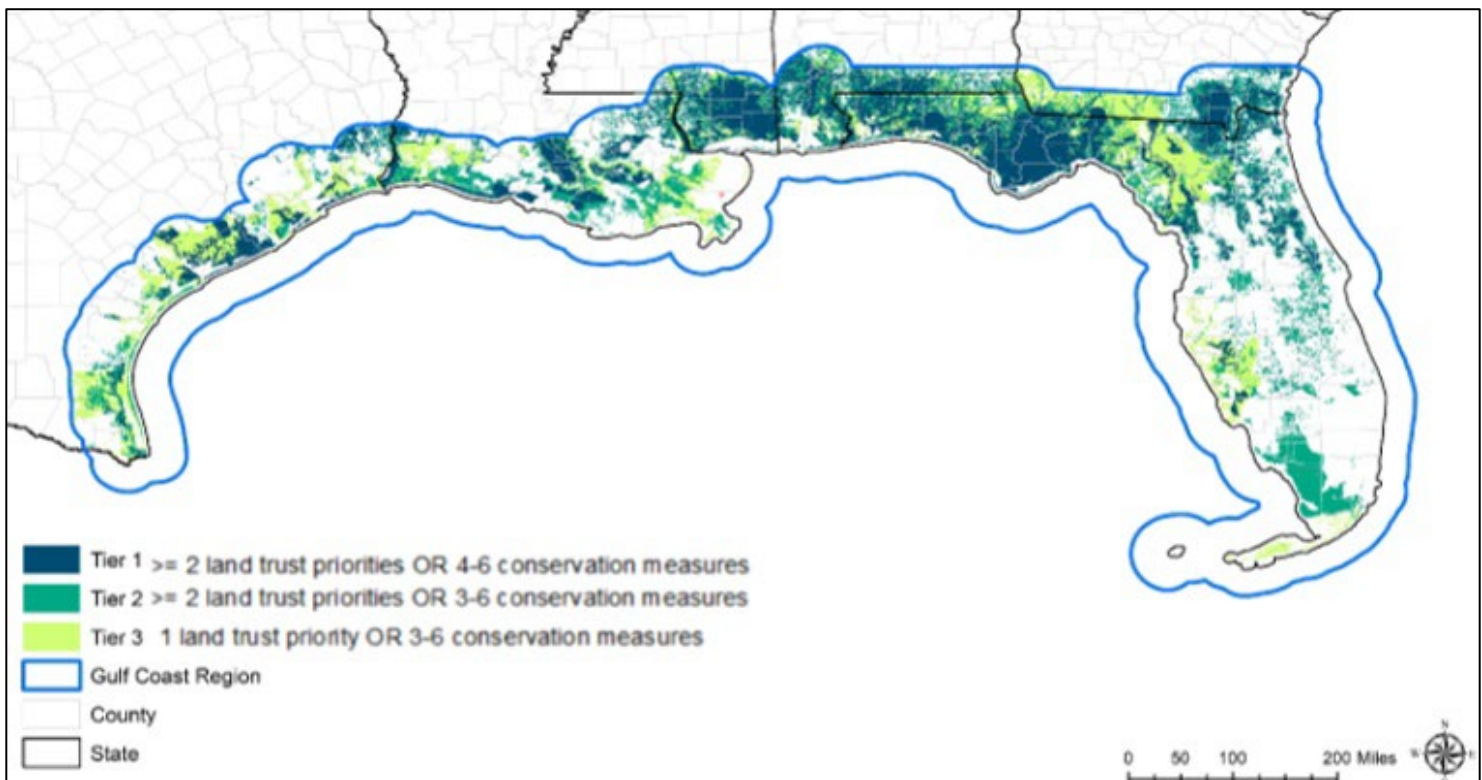


STRATEGIC CONSERVATION VISION



In coordination with the Mississippi State Quantitative Ecology and Spatial Technologies Lab Strategic Conservation Assessment Team and its regional members, the Gulf Partnership released its new Strategic Conservation Vision Tool (SCV). The SCV aligns regional partner priority conservation areas, with specific conservation data measures and habitats, such as priority longleaf habitats, wetlands, connectivity of natural lands, riparian zone composition, migratory bird habitat, and working lands to create a multi-tiered conservation tool to guide management decisions.

<https://gulfpartnership.shinyapps.io/visionapp/>



Gulf Partnership PROJECT ASSISTANCE FUND



Investing in Land Trust Yields Big Results Project Assistance Fund Accomplishments to Date

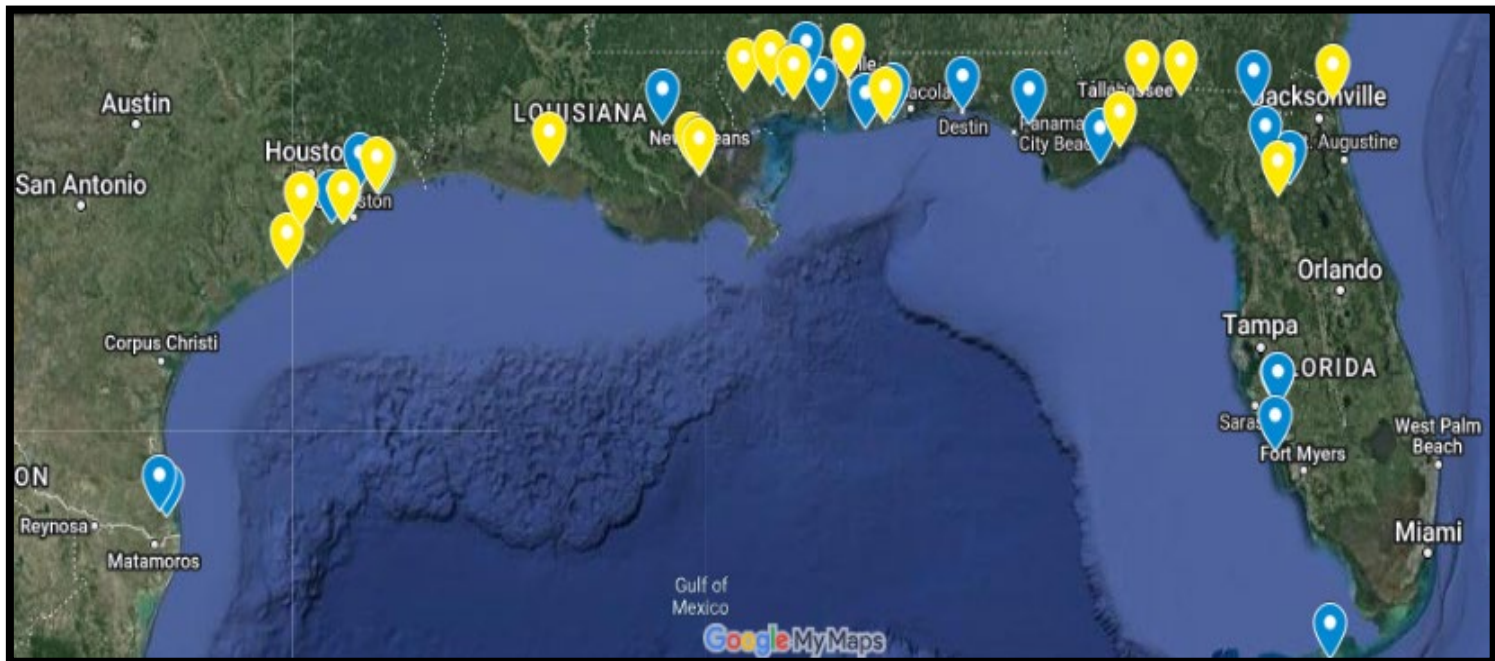
\$389,602
FUNDS USED

34,544+
ACRES PROTECTED TO
DATE

\$81,085,348
DOLLARS
LEVERAGED

24
PROJECTS CLOSED

17
PROJECTS UNDERWAY



In March, a revamped [Project Assistance Fund](#) program (PAF) was launched as a matching grant program available to land trusts across the Gulf of Mexico region to pay for the scientific and legal review needed for the purchase of land and conservation easements. This small grant program provides seed funding that attracts larger funding sources for land purchases and easements, leveraging the power of partnership. **In 2022, the PAF program awarded \$385,005 in funding for 17 projects stretching over 25,000 acres across the Gulf.** In total, the Gulf Partnership and its members hope to leverage approximately **\$50,000,000** in additional conservation land value when completed.

Partners Spotlight

GALVESTON BAY FOUNDATION



Mission: To preserve and enhance Galveston Bay as a healthy and productive place for generations to come.

Programs across the Galveston Bay Foundation continued to reach historic heights in 2022. The Land Conservation Program surpassed 14,000 acres conserved with its most recent acquisitions. The Oyster Shell Recycling Program reclaimed oyster shells from restaurant partners throughout the Houston-Galveston region in record numbers allowing the Foundation to pursue larger restoration projects to help bolster oyster populations in Galveston Bay. Additionally, the Education Program connected thousands of students to the Bay, a vital part of the Foundation's mission to inspire the next generation of environmental stewards.



Photo Credit: Galveston Bay Foundation

Partners Spotlight

TALL TIMBERS RESEARCH STATION AND LAND CONSERVANCY

Mission: The mission of Tall Timbers is to foster exemplary land stewardship through research, conservation and education. Our conservation efforts are dedicated to helping protect the distinctive, rural landscape of South GA and North FL and its traditional land uses.



In 2022, Tall Timbers Research, Inc. acquired one fee-owned property approximately 40 acres in size located in Madison County, Florida. Within the RESTORE boundary, Tall Timbers protected three additional properties with a conservation easement totaling approximately 509 acres.

Partners Spotlight

AMERICAN FARMLAND TRUST



American Farmland Trust takes a holistic approach to farmland and ranchland, protecting it from development, promoting environmentally sound farming practices, and keeping farmers on it. Agriculture offers the most promising solutions in our fight against climate change.



Photo Credit: USDA/American Farmland Trust

Partners Spotlight
ARTIST BOAT



Artist Boat promotes awareness and preservation of coastal margins and the marine environment through the disciplines of the sciences and the arts. In 2022, Artist Boat conserved 134 acres with \$3.9 million dollars in federal, state, and local funds, bringing its Coastal Heritage Preserve to 898 acres.



Partners Spotlight

WOODLANDS CONSERVANCY



Mission: To preserve and restore forested wetlands and other ecologically or historically significant lands in Louisiana.

In 2022, Woodlands Conservancy acquired a 650-acre tract, planting 519 trees and treating 785 acres with selective herbicides for the removal of non-native and invasive vegetation with the help of over 400 volunteers! In addition, Woodlands hired new staff to work on gaining accreditation from the Land Trust Alliance.



Photo Credit: Woodlands Conservancy

Partners Spotlight

CONSERVATION FOUNDATION OF THE GULF COAST



In 2022 the Conservation Foundation of the Gulf Coast saved six properties through conservation easements and acquisitions, totaling 596 acres, and launched the "Re-Wilding the Quads at the Celery Fields" with Sarasota Audubon, a Sarasota County-owned property with Conservation Foundation easement.



Mission: Protect the land and water in Southwest Florida for the benefit of people and nature.

Photo Credit: Conservation Foundation of the Gulf Coast

NATIONAL AUBUDON SOCIETY

Mission: The National Audubon Society protects birds and the places they need, today and tomorrow, throughout the Americas using science, advocacy, education, and on-the-ground conservation



Photo Credit: Audubon Joanne Wuori

Throughout 2022, Audubon continued its rich tradition of advocating for and securing the space, clean air, and clean water that birds and people need to live and thrive. This past year, Audubon and the Audubon Action Fund helped more than 150,000 people make their voices heard, fighting for stronger climate actions in the Inflation Reduction Act, for Lights Out and Native Plant proclamations in cities across the country, for coastal community protections and natural infrastructure that also supports bird colonies. Audubon staff, chapters, and partners worked on the ground to protect and restore vital habitats and natural spaces.



Photo Credit: Audubon Melissa Groo

Partners Spotlight

COLORADO RIVER LAND TRUST

Mission: To work in partnership with landowners to conserve and protect land and water resources for future generations



In 2022, Colorado River Land Trust advanced numerous conservation projects from the hill country to the coast, and permanently protected a stretch of Cypress Creek in Blanco County encompassing 200 acres.



Photo Credit: Colorado River Land Trust

Partners Spotlight

COASTAL PRAIRIE CONSERVANCY



2022 was a busy year for the Coastal Prairie Conservancy (CPC) with a new name that reflects the expansion of its mission and conservation focus area. Between acquisitions and partnerships, the organization stretches from the historic Katy Prairie to the Gulf Coast. Two land protection projects brought CPC's total conservation lands to 30,684 acres. Work with partners on the Texas Coastal Prairie Initiative included hosting a conference and being selected as a Tier 1 priority for the 2023 Texas Coastal Resiliency Master Plan. Outreach activities continued across the preserves, including the opening of Williams Prairie and two new public walking trails. CPC partnered with new groups to better serve all communities surrounding CPC's preserves and elsewhere in the region. Volunteer events brought many visitors to the prairie and educational programs like Unplugged Adventures were offered throughout the year.

Photo Credit: Don Pine

Partners Spotlight

ALACHUA CONSERVATION TRUST



The mission of the Alachua Conservation Trust is to protect the natural, historic, scenic and recreation resources in and around north central Florida. ACT protects land through purchase, donation, and conservation easements primarily in 16 counties.

In 2022, the Alachua Conservation Trust was able to secure acquisitions on 4 properties totaling 355 acres and establish 2 conservation easements on an additional 187 acres.



Photo Credit: Alison Blakeslee (top) and Kim Davidson (bottom)

GULF PARTNERSHIP

BOARD OF DIRECTORS:

Tom Kay	Alachua Conservation Trust
Christine Johnson	Conservation Foundation of the Gulf Coast
Meg Goecker	Alabama Coastal Heritage Trust
Shane Wellendorf	Tall Timbers Research Station and Land Conservancy
Becky Stowe	The Nature Conservancy
Connie Whitaker	Weeks Bay Foundation
Traci Deen	Conservation Florida
Cindy Brown	Land Trust for Louisiana
Stephanie Mathis	Land Trust for the Mississippi Coastal Plain
Jeff Crosby	Colorado River Land Trust
Kara Fox	Audubon
Matt Singer	Galveston Bay Foundation
Mary Anne Piacentini	Katy Prairie Conservancy

EXECUTIVE COMMITTEE:

Tom Kay	Chair
Christine Johnson	Past Chair
Meg Goecker	Vice Chair
Shane Wellendorf	Treasurer
Becky Stowe	Secretary

ADVISORS:

Christina Morhman	Gulf of Mexico Alliance
Beau Hardegree	United States Fish and Wildlife Service
Kelly Presley	Land Trust Alliance
Dan Van Nostrand	National Oceanic and Atmospheric Administration

Our Mission

The Partnership for Gulf Coast Land Conservation (the Gulf Partnership) is a coalition of local, regional, and national conservation organizations that work in the Gulf Coast region within the five Gulf of Mexico states – Alabama, Florida, Louisiana, Mississippi, and Texas. Our mission is to increase the pace, quality, and permanence of voluntary land and water conservation within the coastal region.



Partnership for Gulf Coast Land Conservation
P.O. Box 13121, Tallahassee FL 32317
Email: info@gulfpartnership.org
Web: www.gulfpartnership.org