

fills
up
Band

STRINGS IT SEEMS TO HANG ON VAMP TILL CUE

[A]

Handwritten musical notation for section A. It consists of three staves. The first staff has a treble clef, a key signature of one sharp (F#), and a common time signature (C). It contains a series of slashes representing a rhythmic pattern, with a bracketed section labeled "E-9" and a final measure with a double bar line and a "2" above it. The second staff has a bass clef and contains a series of slashes, with a bracketed section labeled "E-9" and a final measure with a double bar line and a "2" above it. The third staff has a bass clef and contains a series of slashes, with a bracketed section labeled "E-9" and a final measure with a double bar line and a "2" above it. Above the staves, there are handwritten notes: "STRINGS IT SEEMS TO HANG ON VAMP TILL CUE", "A'' B''", "A'' B''", and "A'' B''".

[B]

Handwritten musical notation for section B. It consists of three staves. The first staff has a treble clef and contains a series of slashes, with a bracketed section labeled "E-9 (Nick)" and a final measure with a double bar line and a "2" above it. The second staff has a bass clef and contains a series of slashes, with a bracketed section labeled "E-9" and a final measure with a double bar line and a "2" above it. The third staff has a bass clef and contains a series of slashes, with a bracketed section labeled "E-9" and a final measure with a double bar line and a "2" above it. Above the staves, there are handwritten notes: "A'' B''", "A'' B''", and "A'' B''".

[C]

Handwritten musical notation for section C. It consists of three staves. The first staff has a treble clef and contains a series of slashes, with a bracketed section labeled "E-9 (Verse)" and a final measure with a double bar line and a "2" above it. The second staff has a bass clef and contains a series of slashes, with a bracketed section labeled "E-9" and a final measure with a double bar line and a "2" above it. The third staff has a bass clef and contains a series of slashes, with a bracketed section labeled "E-9" and a final measure with a double bar line and a "2" above it. Above the staves, there are handwritten notes: "A'' B''", "A'' B''", "G D7 F#-7", "B-7 A6", "E-9 A'' B''", and "G D7 F#-7".

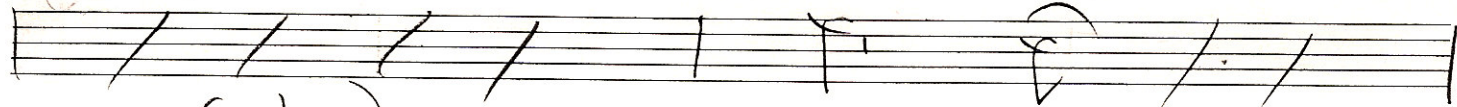
SNOWBALL
E-9

Handwritten musical notation for section SNOWBALL. It consists of one staff with a bass clef. It contains a series of slashes, with a bracketed section labeled "E-9" and a final measure with a double bar line and a "2" above it. Above the staff, there are handwritten notes: "A'' B''".

E-9

A11

B11



GΔ7 (oh)

A11



GΔ7

Loose me

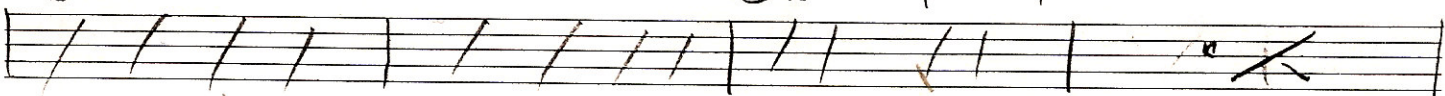


B-7

B-7

GΔ7

F#-7



GΔ7 F#-7

B-7 A6



E-9

A11

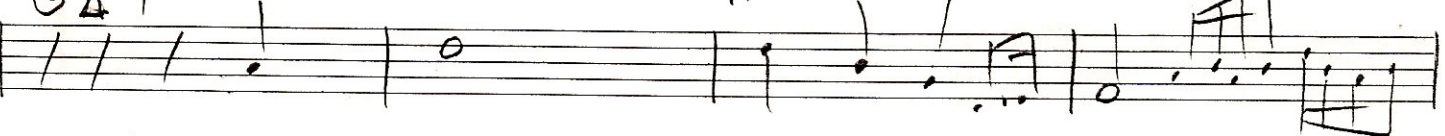
B11

VAMP TILL CUE



GΔ7

A11



GΔ7

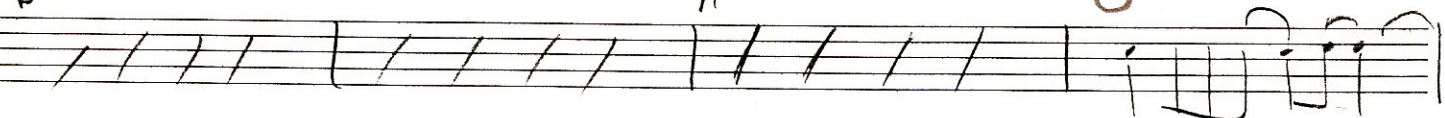
Loose me



B-7

A11

G/A



build up