

WESTERN BARDSTOWN CONNECTOR PUBLIC MEETING

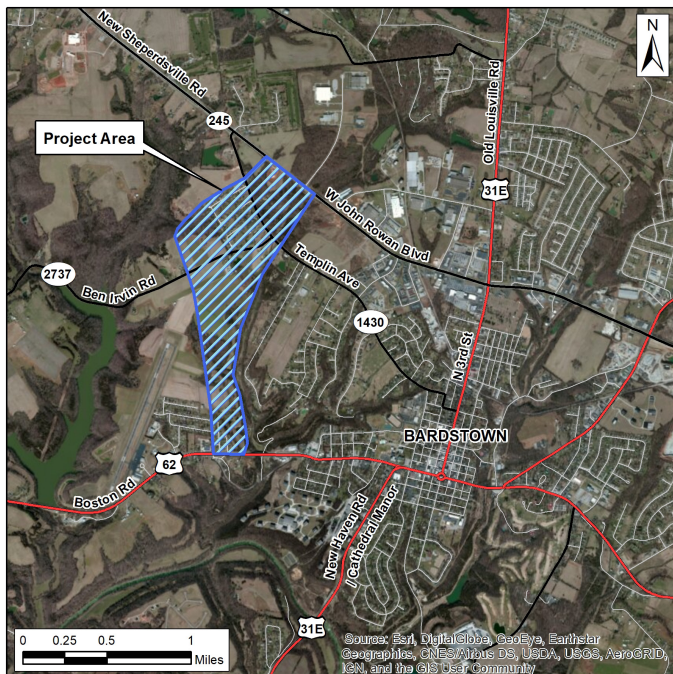
NELSON COUNTY KYTC ITEM NO. 4-8809



Purpose of the Public Meeting

The purpose of this meeting is to present information regarding the proposed Western Bardstown Connector project, which will connect KY 245 and US 62 on the west side of Bardstown. The Kentucky Transportation Cabinet (KYTC) is requesting public input on preliminary engineering alternatives, including the location of the north tie-in to KY 245, and the south tie-in to US 62. KYTC is also seeking input on the potential construction of a shared use path adjacent to the proposed roadway.

A narrated presentation providing an overview of the project is available on the project website at BardstownConnector.com. A questionnaire is also available on the website to provide comments, and to request an in-person meeting with the project team, if desired. We are interested in your input and encourage you to share your thoughts or concerns on the proposed project. Please take the time to visit the project website to view the presentation and complete the questionnaire to provide valuable feedback for the project team.



PROJECT LOCATION

Project Purpose and Need

Currently there are few north-south routes on the west side of Bardstown that provide an alternative to traveling through downtown for passenger cars and freight traffic. Traffic forecasts suggest that traffic volumes will continue to increase both downtown and on the west side of Bardstown. To that end, the proposed Western Bardstown Connector Route is needed to improve connectivity and mobility on the west side of town, and to reduce congestion and improve safety in the historic downtown district.

The Western Bardstown Connectivity Study was completed in 2017 to evaluate potential alternatives to improve connectivity on the west side of town. The study recommended the inner corridor closer to town as the preferred option, and identified the segment between KY 245 and US 62 as the priority segment. Based on that recommendation, various options have been developed for the inner corridor and are presented herein.

Partial Access Control

The Western Bardstown Connector will incorporate a minimum spacing of 1,200 feet between access points. Implementing partial access control along the corridor will help maintain future traffic flow and reduce potential safety concerns that could otherwise arise from a high frequency of intersections.



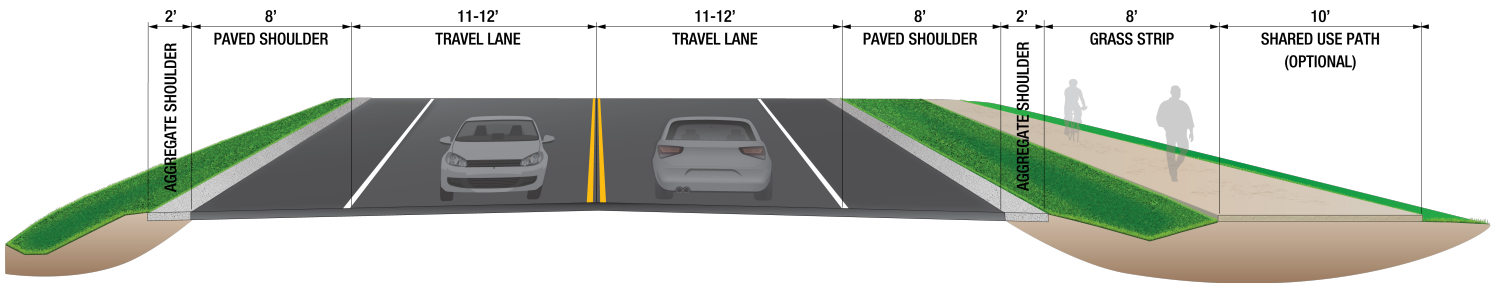
SEMI-TRUCK ENTERING COURTHOUSE SQUARE

WESTERN BARDSTOWN CONNECTOR PUBLIC MEETING

NELSON COUNTY KYTC ITEM NO. 4-8809



TYPICAL SECTION WESTERN BARDSTOWN CONNECTOR



Typical Section

- Rural 2-Lane Typical Section
- Two 11-ft–12-ft Travel Lanes
- 10-ft Shoulders (8-ft paved, 2-ft aggregate)
- Shared Use Path (Optional)

Comparison of Alternatives

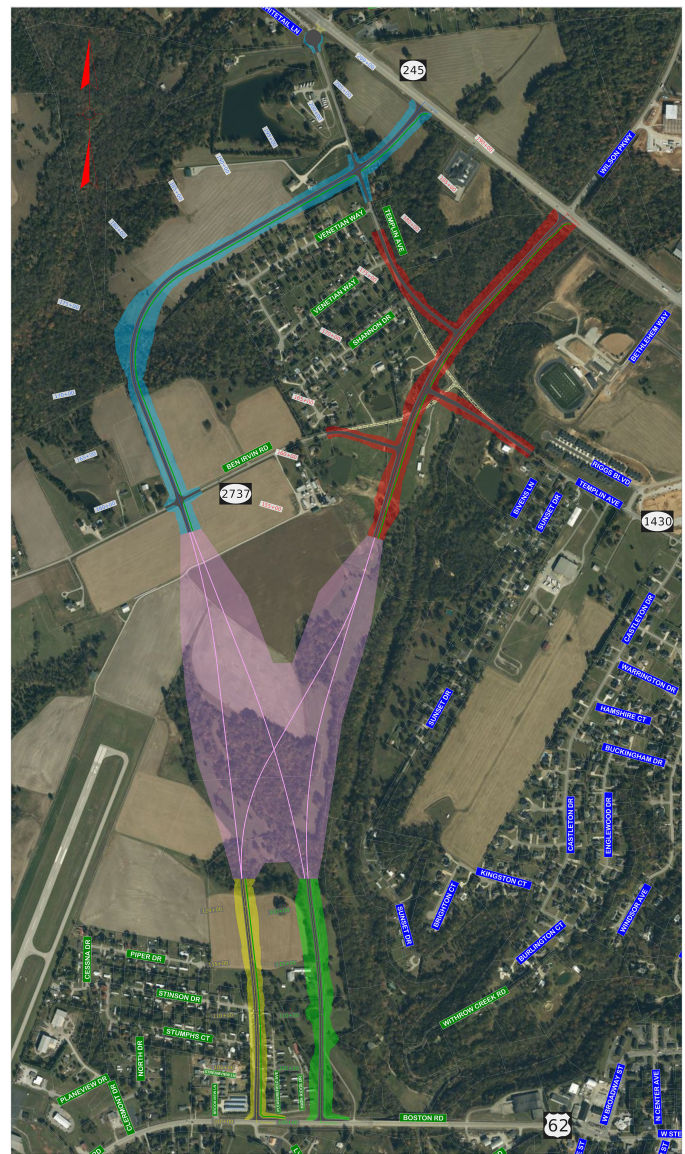
Two Connector Route alignment alternatives have been developed for the northern tie-in to KY 245 (Blue & Red), and for the southern tie-in to US 62 (Yellow & Green). Any of the alignment alternatives could be connected within the transition area denoted in purple shading in the figure to the right. The design team is seeking public input on the alignment alternatives for both the KY 245 and US 62 tie-in locations.

KY 245 Tie-In Alternatives

- 1) Blue (West) Alignment
 - Eliminate direct Templin Avenue access from KY 245 and remove traffic signal
 - Cul-de-sac Templin Avenue between the new Connector Route and existing Templin Avenue/KY 245 intersection
- 2) Red (East) Alignment
 - Locate across from Wilson Parkway at KY 245
 - Existing Templin Avenue/KY 245 intersection remains open, but traffic signal is removed

US 62 Tie-In Alternatives

- 1) Yellow (West) Alignment
 - Located at existing Greenfield Avenue/US 62 intersection
- 2) Green (East) Alignment
 - Located between High Ridge Drive and Withrow Creek Bridge on US 62



**WESTERN BARDSTOWN CONNECTOR
ALIGNMENT ALTERNATIVES**

WESTERN BARDSTOWN CONNECTOR PUBLIC MEETING

NELSON COUNTY KYTC ITEM NO. 4-8809



Estimated Project Cost

- Similar for all alternatives
- Approximately \$6.5 - \$7.5 Million

What Happens Next?

- Project is Federally Funded Through Construction
- Selection of Preferred Alternative (Fall 2020)
- Environmental Documentation (Spring 2021)
- Right of Way Acquisition (Late 2021 - 2022)
- Utility Relocations (2022)
- Construction (2023 Tentative)
 - + Pending 2022 General Assembly Passage of Highway Plan

We Want To Hear From You!

Please visit the project website at BardstownConnector.com. At this website, you will find an online questionnaire allowing you to provide comments on the alternatives and the potential construction of a shared use path adjacent to the proposed roadway. You may also request an in-person meeting with a member of the project team if desired. You will also find a narrated presentation providing an overview of the project along with a project map showing the preliminary Connector Route alignment alternatives. We encourage you to make an official comment via the questionnaire that will be incorporated into the project summary and decision making process.

If you would like to request an in-person meeting with a member of the project team, but do not wish to complete the questionnaire, please contact Kevin Blain or Adam Clayton directly for this request.

Contact Information

If you have any questions regarding the project, please feel free to contact:



Kevin Blain, P.E.
KYTC Project Manager
KYTC District 4
634 East Dixie Highway
Elizabethtown, KY 42701
Kevin.Blain@ky.gov
(270)766-5066



Adam Clayton, P.E.
Consultant Project Manager
Strand Associates, Inc.
325 West Main Street, Suite 710
Louisville, KY 40202
Adam.Clayton@strand.com
(502)583-7020