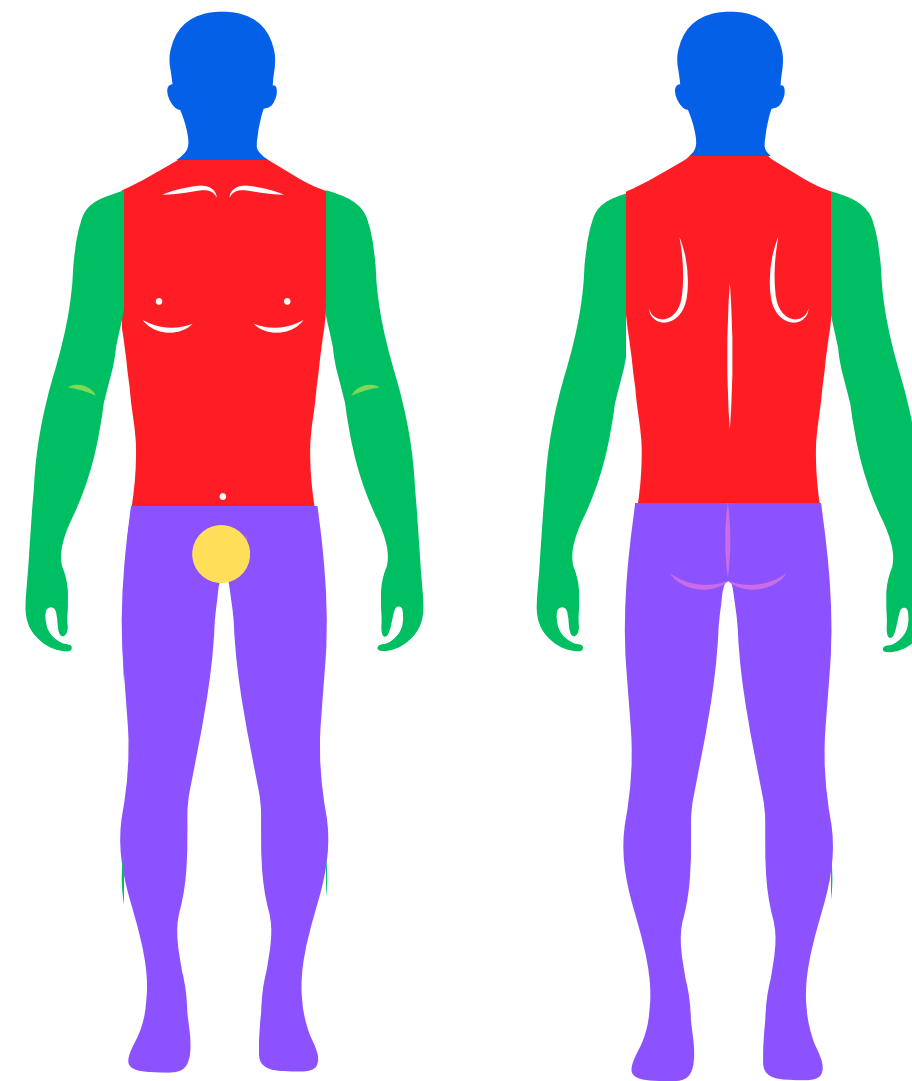


BODY PART	ADULT % BSA	INFANT % BSA
ENTIRE HEAD AND NECK	9%	18%
ENTIRE RIGHT ARM	9%	9%
ENTIRE LEFT ARM	9%	9%
ENTIRE TRUNK TRUNK = THORAX AND ABDOMEN	36%	36%
GROIN	1%	1%
ENTIRE RIGHT LEG	18%	14%
ENTIRE LEFT LEG	18%	14%



FRONT (ANTERIOR)

BACK (POSTERIOR)

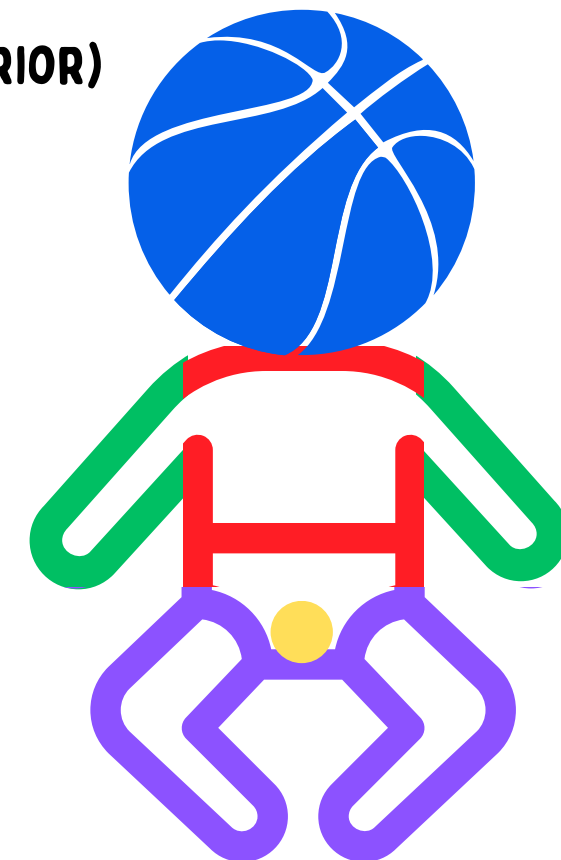


LIFELINE EMS TRAINING
AND CONSULTING



PATIENTS PALM +
FINGERS =

1%



LIFELINE EMS TRAINING
AND CONSULTING

**** ENTIRE = FRONT (ANTERIOR) AND BACK (POSTERIOR)**