

NCS

North Country Environmental Services, Inc.



3 Pitkin Court  
Montpelier, Vermont 05602

(802) 223-7221  
(802) 223-7128 Fax

February 15, 2003

Mr. Michael Guilfooy  
Waste Management Division  
New Hampshire Department of Environmental Services  
6 Hazen Drive  
Concord, NH 03301-0509

**RE: North Country Environmental Services, Inc. Landfill  
Landfill Facility - Bethlehem, N.H  
Incident Report and Resolution**

*{Via facsimile; (603) 271-2456, 3 pages – originals to follow conventional mail}*

Dear Mr. Guilfooy:

NCES (North Country Environmental Services, Inc.) is writing to provide a complete Incident Report and Proposed Resolution to a leachate forcemain break at the above referenced site.

On Wednesday, February 12, 2003 a pipe cleaning contractor was at the site performing "pipe jetting" and "pipe swabbing" services on leachate conveyance piping. Pipe jetting is terminology used in the industry for high water pressure cleaning of interior pipe walls and "pipe swabbing" involves forcing a small device through piping with water pressure to dislodge any residual solids that pipe jetting can not loosen.

While pipe swabbing a section of forcemain from the consolidation building to the first leak detection manhole (see attached sketch) the pipe swab became bound in the pipe and attempts to force it through with water pressure split the forcemain. This forcemain originates at the consolidation building, travels through a series of leak detection manholes and is connected direct to the landfill gas condensate holding tank.

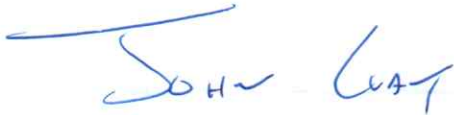
This forcemain is not in operation at this time because of the break in the line and valves are closed bracketing the damaged section. Repairs to this Forcemain will not commence until after the frost in the soils above the forcemain have receded. This section of forcemain does not serve to remove leachate from the sumps, rather, a conveyance of consolidated leachate to the landfill gas condensate holding tank that serves the leachate evaporation unit.

All leachate was contained within the containment system, pumped from the leak detection manhole into a tanker and deposited in the Stage III holding tanks. Any consolidated leachate that is to be evaporated will be transferred from the load out system at the consolidation building to the Stage III holding tanks via leachate tankers.

Mr. Michael Guilfooy  
Page 2 of 2  
February 15, 2003

NCES will notify you when repairs are scheduled to be made and will have our Consulting Engineers on-site to inspect the work and provide construction quality assurance. A report will be forwarded to you and will include all necessary pipe pressure testing data once the work is complete. Should you have any questions please do not hesitate to contact me at (802) 223-7221.

Sincerely,  
NORTH COUNTRY ENVIRONMENTAL SERVICES, INC.

A handwritten signature in blue ink that reads "John Gay". The signature is written in a cursive style with a horizontal line above the first name.

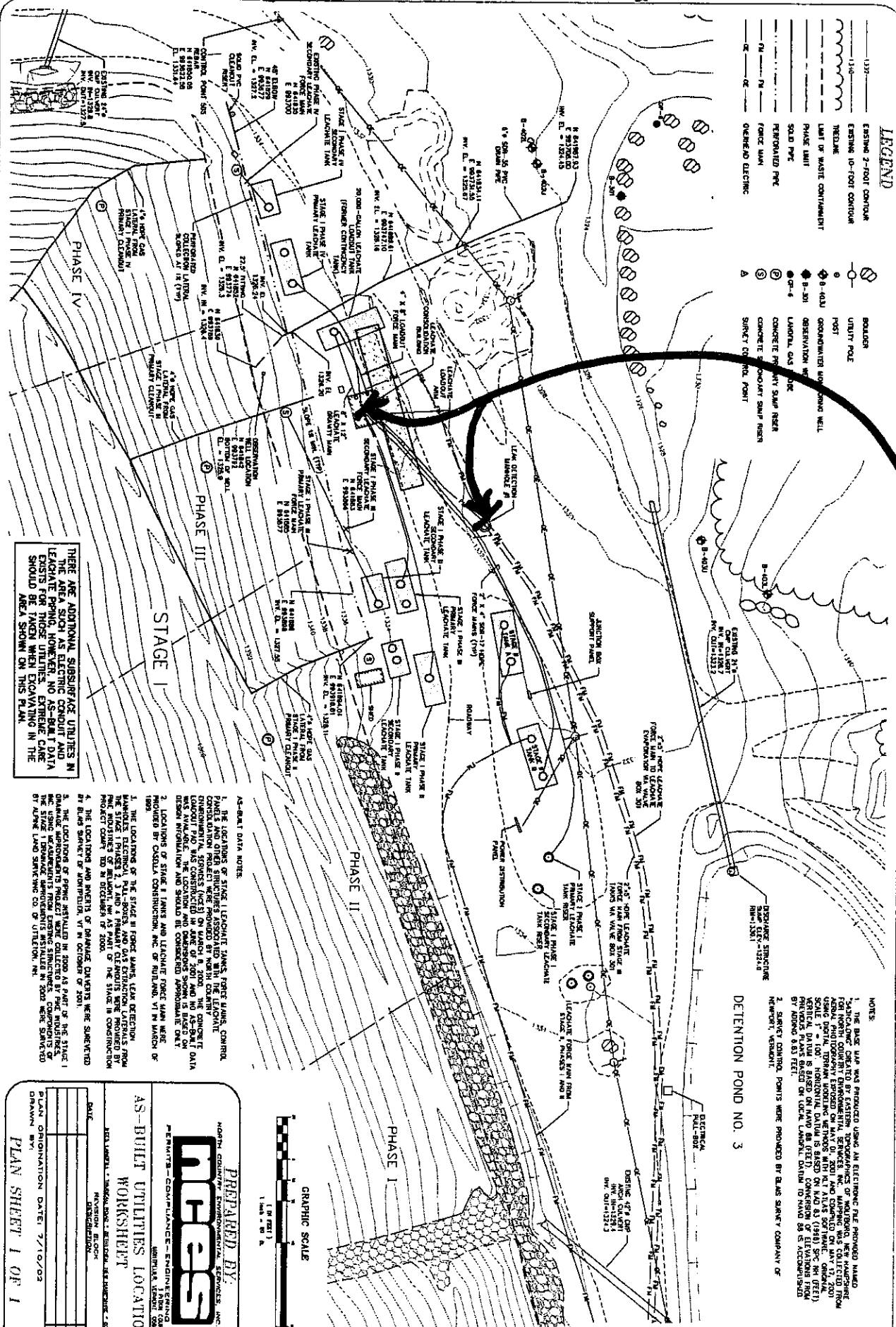
John Gay, E.I.  
Permits, Compliance and Engineering

Enclosure

c: Larry Lackey, North Country Environmental Services, Inc. (via e-mail)  
Ted Reeves, North Country Environmental Services, Inc. (via e-mail)  
Lenny Wing, North Country Environmental Services, Inc. (via e-mail)  
Don Monahan, North Country Environmental Services, Inc.  
Al Sabino, North Country Environmental Services, Inc. (via e-mail)  
Robert Banfield North Country Environmental Services, Inc. (via e-mail)  
Jim Chabot, SHA-Concord

# Probable Section of Foreman Break

- ### LEGEND
- 1:50 --- EXISTING 2-FOOT CONTOUR
  - 1:10 --- EXISTING 10-FOOT CONTOUR
  - --- THELINE
  - --- LIMIT OF WASTE CONTAINMENT
  - --- PHASE LIMIT
  - --- SOLID PAVE
  - --- PERFORATED PAVE
  - --- FORCE MAIN
  - --- OVERHEAD ELECTRIC
- --- SPOILER
  - --- UTILITY POLE
  - --- POST
  - --- 4-40' OPERATOR'S WORKING WELL
  - --- 3-30' OBSERVATION WELL
  - --- 2-4' LATERAL GAS PORE
  - --- CONCRETE PUMP SAND REER
  - --- CONCRETE SECONDARY SAND REER
  - --- SAFETY CONTROL POINT



THESE ARE ADDITIONAL SUBSURFACE UTILITIES IN THE AREA SUCH AS ELECTRIC CONDUIT AND EXISTING PIPING, HOWEVER, NO AS-BUILT DATA EXISTS FOR THESE UTILITIES. EXTREME CARE SHOULD BE TAKEN IN EXCAVATING IN THE AREA SHOWN ON THIS PLAN.

- #### AS-BUILT DATA NOTES:
1. THE LOCATIONS OF STAGE I LEACHATE TANKS, FORCE MAINS, CONTROL PANELS AND OTHER STRUCTURES ASSOCIATED WITH THE LEACHATE COLLECTION PROJECT WERE PROVIDED BY NORTH COUNTY WASTE TREATMENT PLANT. THIS INFORMATION WAS OBTAINED FROM A PROJECT LOG THAT WAS CONSTRUCTED IN JANUARY OF 2001 AND NO AS-BUILT DATA WAS AVAILABLE. THE LOCATION AND DEPTH OF STAGE I TANKS AND FORCE MAINS SHOULD BE CORRECTED APPROXIMATELY 10 FEET.
  2. LOCATIONS OF STAGE I TANKS AND LEACHATE FORCE MAIN WERE DETERMINED BY CONSULTING CONSTRUCTION, INC. ON MARCH 11, 2003.
  3. THE LOCATIONS OF STAGE II FORCE MAINS, LEACHATE TANKS, HANDHOLES, ELECTRICAL PANELS, AND GAS EXHAUSTION LATERALS FROM PHASE I PHASES I, II AND A PRIMARY CLEANOUTS WERE PROVIDED BY PROJECT LOGS IN DECEMBER OF 2000.
  4. THE LOCATIONS AND DEPTHS OF PHASE I CLEANOUTS WERE SUBMITTED BY BLUE SKY CONSULTING, INC. IN OCTOBER OF 2001.
  5. THE LOCATIONS OF OTHER UTILITIES IN 2002 AS PART OF THE STAGE I CLEANOUT APPROXIMATELY WERE COLLECTED BY THE CONSULTANTS OF BLUE SKY CONSULTING, INC. IN OCTOBER OF 2001.
  6. ALL UTILITIES SHOWN ON THIS PLAN WERE SHOWN BY BLUE SKY CONSULTING, INC. OF UTILITIES, INC.

- #### NOTES
1. THE BASE MAP WAS PRODUCED USING AN ELECTRONIC FILE PROVIDED BY NORTH COUNTY WASTE TREATMENT PLANT. THE DATA WAS COLLECTED FROM AERIAL PHOTOGRAPHS TAKEN IN 1998. THE DATA WAS COLLECTED FROM AERIAL PHOTOGRAPHS TAKEN IN 1998. THE DATA WAS COLLECTED FROM AERIAL PHOTOGRAPHS TAKEN IN 1998. THE DATA WAS COLLECTED FROM AERIAL PHOTOGRAPHS TAKEN IN 1998.
  2. SAFETY CONTROL POINTS WERE PROVIDED BY BLUE SKY COMPANY OF NEWTON, VERMONT.



PREPARED BY:  
NORTH COUNTY ENVIRONMENTAL SERVICES, INC.  
1000 W. MAIN ST., NEWTON, VERMONT 05457

AS-BUILT UTILITIES LOCATIONS  
WORKSHEET

DATE: \_\_\_\_\_  
DRAWN BY: \_\_\_\_\_  
PLAN ORIENTATION DATE: 7/10/03  
PLAN SHEET 1 OF 1

NOT TO SCALE