



North Country Environmental Services, Inc.

September 12, 2006

Wayne Wheeler, P.E.
New Hampshire Department of Environmental Services
Solid Waste Compliance Section
6 Hazen Drive
Concord, NH 03301-0509

3 Pitkin Court
Montpelier, Vermont 05602

(802) 223-7221
(802) 223-7128 Fax

**RE: North Country Environmental Services, Inc.
Landfill Facility - Bethlehem, NH
Leachate Release**



Dear Wayne:

Attached to this correspondence please find a letter report dated August 30, 2006 prepared by Sanborn Head and Associates of Concord, NH, documenting observations of a leachate release and clean up activities for the NCES (North Country Environmental Services, Inc.) Landfill located in Bethlehem, NH.

If you have any questions please do not hesitate to call me at (802) 223-7221. My email address is gene.martin@casella.com.

Sincerely,

NORTH COUNTRY ENVIRONMENTAL SERVICES, INC.

Eugene J. Martin, Senior Project Manager
Permits, Compliance & Engineering

Enclosures

John Gay, North Country Environmental Services, Inc. (via email, w/o encl.)
Larry Lackey, North Country Environmental Services, Inc. (via email, w/o encl.)
Donald Wallgren, North Country Environmental Services, Inc. (via email, w/o encl.)
John Schwalbe, North Country Environmental Services, Inc. (via email, w/o encl.)
Kevin Roy, North Country Environmental Services, Inc. (via email, w/o encl.)
Al Sabino, North Country Environmental Services, Inc. (via email, w/o encl.)
Robert Banfield, North Country Environmental Services, Inc. (via email, w/o encl.)
Donald Monahan, North Country Environmental Services, Inc. (via email, w/o encl.)
Sean Moran, North Country Environmental Services, Inc. (via email, w/o encl.)
Bryan Gould, BOG
Jim Chabott, SHA



Sanborn, Head & Associates

Consulting Engineers & Scientists

August 30, 2006
File No. 1003.05

Mr. Eugene Martin
North Country Environmental Services, Inc.
3 Pitkin Court
Montpelier, VT 05602



Re: August 7, 2006 Leachate Release
North Country Environmental Services, Inc. (NCES) Landfill
581 Trudeau Road
Bethlehem, New Hampshire

Dear Gene:

This letter was prepared at your request to document Sanborn, Head & Associates, Inc.'s (SHA's) observations of a leachate release that occurred at the NCES site on Monday August 7, 2006.

At approximately 1100 hours Sam Wigget of Casella Construction Inc., (CCI) informed SHA's on-site representative, Eric Baron, that a leachate spill had occurred during construction activities along the temporary Stage II leachate forcemain near the Stage IV connection to Stage I outside the limit of waste. At NCES' request, Eric documented the release and the efforts to clean up the affected area.

Sam indicated to Eric that the release occurred while removing excess Screened Till from the Stage IV anchor trench with a front end loader. Apparently the loader bucket cut into the Stage II forcemain. When the damage occurred, leachate was being pumped through the forcemain. The equipment operator placed the front end loader bucket under the damaged section of forcemain to collect leachate. Approximately 600 gallons of leachate was collected in the bucket and it appeared that less than 50 gallons of leachate spilled onto the ground. The contained leachate was pumped into one of the Stage II leachate tanks.

Eric observed CCI excavate the area surrounding the damaged forcemain where the leachate was released. Approximately 10 cubic yards of soil was removed and transported to the active portion of the landfill for disposal. It appeared that the contractor removed the soil that was impacted by the leachate release.

Refer to the attached Figure No. 1 for the approximate location of the release and soil excavation.

*Charles L. Head ■ R. Scott Shillaber ■ Charles A. Crocetti ■ James A. Chabot
Mathew A. DiPilato ■ Daniel B. Carr ■ Duncan W. Wood ■ Joseph G. Engels ■ Vernon R. Kokosa*

Sanborn, Head & Associates, Inc.
20 Foundry Street ■ Concord, NH 03301
concord@sanbornhead.com ■ www.sanbornhead.com
Phone (603) 229-1900 ■ Fax (603) 229-1919

If you have any questions, or require further information, please contact the undersigned.

Very truly yours,
SANBORN, HEAD & ASSOCIATES, INC.

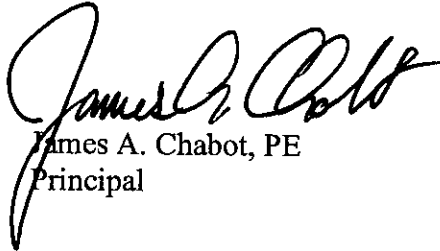


Kelly L. Marshall
Senior Project Engineer

KELM/JAC:kelm

Encl. Figure No. 1

cc: Kevin Roy, NCES Bethlehem
Sean Moran, NCES Bethlehem



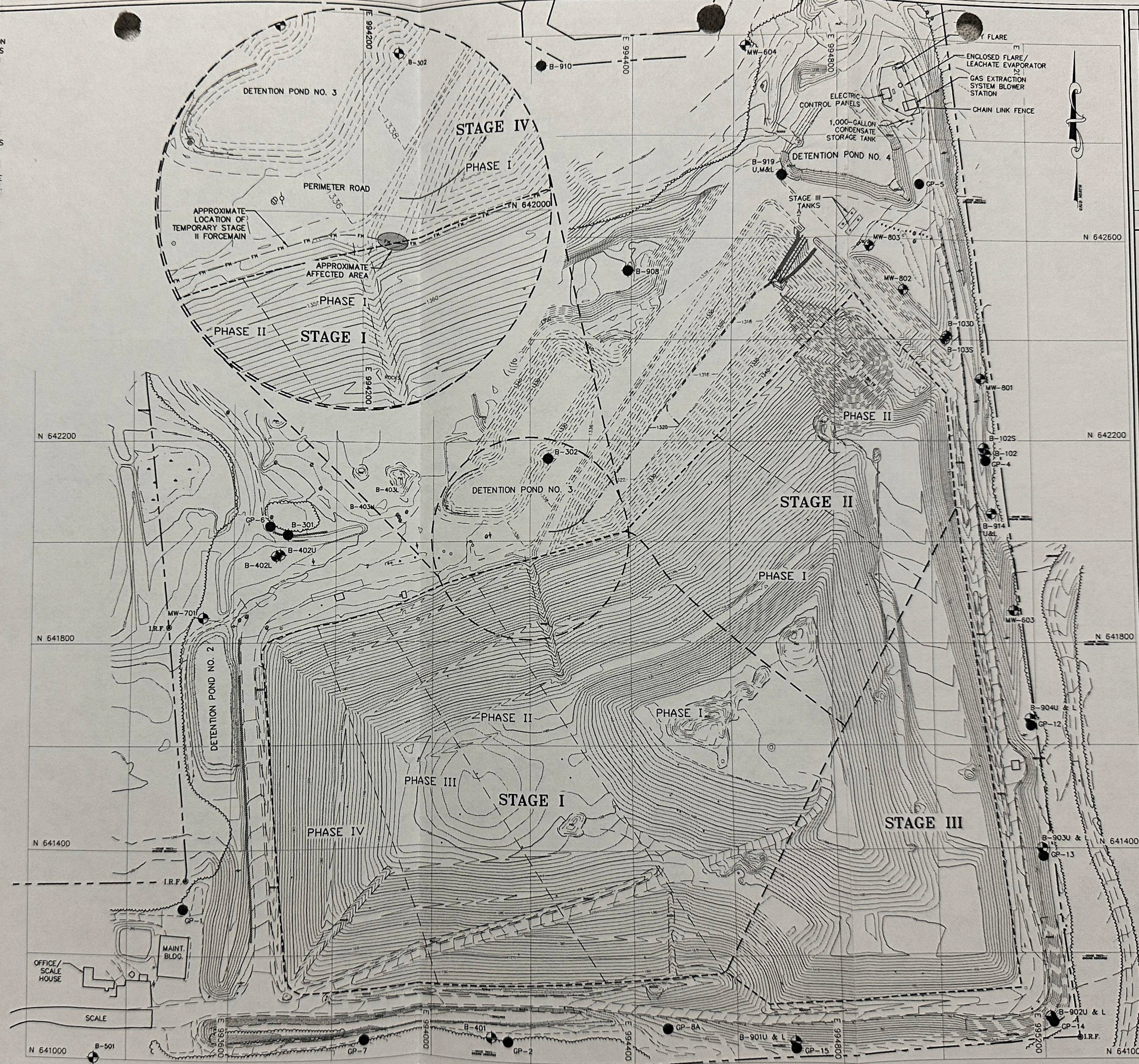
James A. Chabot, PE
Principal

NOTES:

1. THE BASE MAP WAS PRODUCED USING AN ELECTRONIC FILE PROVIDED TO SHA ON FEBRUARY 14, 2006 NAMED "5431XLE.DWG" CREATED BY EASTERN TOPOGRAPHICS OF WOLFBORO, NEW HAMPSHIRE FOR NORTH COUNTRY ENVIRONMENTAL SERVICES, INC. MAPPING WAS COLLECTED FROM AERIAL PHOTOGRAPHY EXPOSED ON NOVEMBER 12, 2005 AND COMPILED ON FEBRUARY 2, 2006 USING DIGITAL TERRAIN MODELING METHODS WITH KLT ATLAS SOFTWARE. ORIGINAL SCALE 1" = 40'. HORIZONTAL DATUM IS BASED ON NAD 83 (1996) SPC NH (FEET). VERTICAL DATUM IS BASED ON NAVD 88 (FEET).
2. AS-BUILT LOCATIONS OF EXISTING STAGE I LIMIT OF WASTE CONTAINMENT PROVIDED BY CASELLA CONSTRUCTION, INC.
3. THE PROPERTY LINES SHOWN WERE TAKEN FROM SHEETS 1 THROUGH 3 OF PLANS ENTITLED "BOUNDARY SURVEY PLAN FOR CASELLA WASTE SYSTEMS, INC. ON THE LANDS OF NORTH COUNTRY ENVIRONMENTAL SERVICES" PREPARED BY ALPINE LAND SURVEYING COMPANY (ALPINE) OF LITTLETON, NEW HAMPSHIRE, DATED FEBRUARY OF 2002. PLANS WERE PROVIDED ELECTRONICALLY TO SHA BY ALPINE ON MARCH 1, 2002 IN DRAFT FORMAT AND AT AN ORIGINAL SCALE OF 1" = 100'. ON AUGUST 7, 2006 BY SHA PERSONNEL.

LEGEND:

- I.R.F. @ IRON ROD FOUND
- - - - - PROPERTY LINE
- ~ ~ ~ ~ TREE LINE
- B-911 EXISTING MONITORING WELL
- B-915 EXPLORATION WITH OBSERVATION WELL
- GP-6 EXISTING GAS PROBE
- - - - - EXISTING 10-FOOT CONTOUR
- - - - - EXISTING 2-FOOT CONTOUR
- - - - - LIMIT OF WASTE CONTAINMENT
- - - - - PHASE LIMIT LINE
- ○ ○ EXISTING BOULDERS
- x - x - EXISTING FENCE
- EDGE OF WATER
- EDGE OF WETLAND
- - - - - EDGE OF ROAD
- LDMH LEAK DETECTION MANHOLE



NO.	DATE	DESCRIPTION	BY

GRAPHICAL SCALE
 100' 50' 0' 100' 200'

SH&A
Sanborn, Head & Associates
Consulting Engineers & Scientists

DRAWN BY: KELM
 DESIGNED BY: JAC
 CHECKED BY:
 REVIEWED BY:
 PROJECT MGR: JAC
 PIC: JAC
 DATE: AUG 06

NORTH COUNTRY ENVIRONMENTAL SERVICES, INC.
 BETHLEHEM, NEW HAMPSHIRE

SITE PLAN

PROJECT NUMBER:
 1003.05

FIGURE NUMBER:
 1

PROJECT: 1003.05 NORTH COUNTRY ENVIRONMENTAL SERVICES, INC. BETHLEHEM, NH
 DATE: 08/06/06
 DRAWN BY: KELM
 DESIGNED BY: JAC
 CHECKED BY:
 REVIEWED BY:
 PROJECT MGR: JAC
 PIC: JAC
 DATE: AUG 06
 FILE: 1003.05_NCE_SitePlan.dwg
 LAYOUT: 1003.05_NCE_SitePlan.dwg
 PLOT DATE: 8/1/2006 10:00:00 AM
 PLOT BY: JAC