

# My Love for “*Lucifer*” (the show): A Captivating Journey

By: Margie Gallagher

From the moment I started watching *Lucifer*, I was enthralled. The show possesses an irresistible charm that keeps me eagerly anticipating each new episode. The storyline is nothing short of fascinating, seamlessly blending elements of crime, fantasy, and drama in a refreshingly unique way.

One of the most captivating aspects of the show is the dynamic between Lucifer Morningstar and Detective Chloe Decker. The palpable sexual tension between them adds an extra layer of intrigue to every episode. Their chemistry is electric, and observing the evolution of their relationship is one of the show's greatest pleasures.

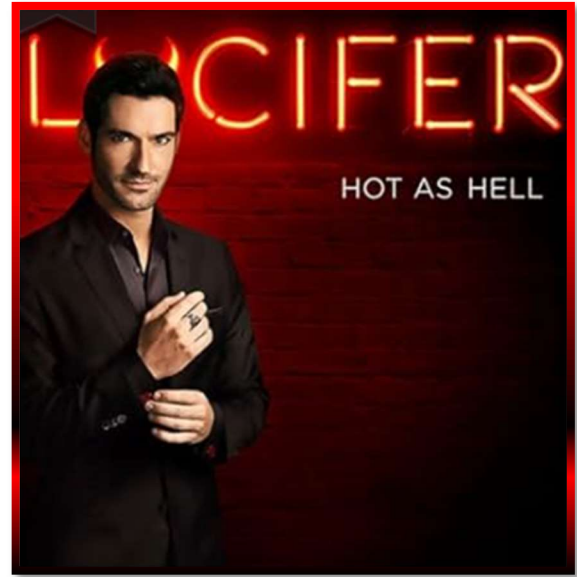
## **Character Analysis**

### ***Lucifer Morningstar:***

Lucifer is a character of remarkable complexity. His transformation from the ruler of Hell to a nightclub owner and LAPD consultant is both entertaining and thought-provoking. Tom Ellis's portrayal of Lucifer is charismatic and nuanced, making it easy to empathize with his struggles and triumphs. Lucifer's character is defined by his charm, wit, and vulnerability. Despite his devilish exterior, he grapples with profound issues of identity, redemption, and love. His interactions with other characters often reveal his hidden depths and the internal conflict between his demonic nature and his desire to be understood and accepted.

### ***Detective Chloe Decker:***

Chloe serves as the perfect counterbalance to Lucifer's devil-may-care attitude. Her dedication to her job and her strong moral compass provides a grounding influence, creating a compelling contrast that drives the narrative forward. Chloe is portrayed as a strong, independent, and principled detective who is not easily swayed by Lucifer's charms. Her character



Source: <https://www.imdb.com/title/tt4052886/>

adds a layer of realism and integrity to the show, and her evolving relationship with Lucifer highlights her ability to see beyond his facade and understand the person he truly is.

### ***Mazikeen (Maze):***

Maze is another intriguing character who adds depth to the show. As a demon and Lucifer's loyal ally, she struggles with her own identity and place in the human world. Her journey towards understanding emotions and forming genuine connections is both touching and compelling. Maze's fierce loyalty and combat skills make her a formidable presence, while her vulnerability and quest for belonging make her relatable.

### ***Amenadiel:***

Amenadiel, Lucifer's brother, brings a celestial perspective to the show. His initial mission to bring Lucifer back to Hell evolves into a deeper understanding of humanity and his own purpose. Amenadiel's character development is marked by his growing empathy and his struggle to balance his divine duties with his love for his family.

## **Impact on Pop Culture**

*Lucifer* has made a significant impact on pop culture since its debut. The show has sparked discussions about religion, morality, and the supernatural, challenging traditional portrayals of the devil and offering a more nuanced and humanized version of Lucifer. This fresh take has resonated with audiences, making the show a cultural phenomenon.

The series has also been praised for its witty dialogue, complex characters, and the way it blends humor with deeper philosophical questions. Its popularity soared even higher when it moved to Netflix, where it became one of

the most watched shows. The show's success on the streaming platform highlights its broad appeal and the strong connection it has built with its fanbase.

Moreover, *Lucifer* has influenced other media and entertainment, inspiring fan art, fan fiction, and even academic discussions about its themes and characters. The show's portrayal of a sympathetic devil has opened up new ways of thinking about good and evil, redemption, and human condition.

## **Personal Reflection**

Watching *Lucifer* has been more than just a pastime for me; it has been a journey of exploration and enjoyment. The show's unique blend of humor, drama, and supernatural elements has provided a much-needed escape from the everyday routine. The characters, especially Lucifer and Chloe, have become almost like friends whose stories I eagerly follow. Their struggles, triumphs, and evolving relationships resonate on a personal level, reminding me of the complexities and beauty of human connections.

In conclusion, *Lucifer* is more than just a TV show for me; it is an experience. The captivating storyline, the sizzling chemistry between Lucifer and Decker, the brilliant character development, and its profound impact on pop culture make it a standout series that I cannot get enough of.

### ***Favorite Quotes***

The show is filled with memorable quotes that capture the essence of its characters and themes. Here are some of my favorites:

1. **Lucifer Morningstar:**  
*"People sometimes kill the people with whom they're in love. The heart's mysterious."*
2. **Lucifer Morningstar:**  
*"Sometimes, betrayal comes from the ones we expect the least."*
3. **Lucifer Morningstar:**  
*"Believe me, there is no winning when you play by a twisted tyrant's rules."*
4. **Lucifer Morningstar:**  
*"You shouldn't have to change for anyone. And neither should I."*
5. **Amenadiel:**  
*"We need the most love when we're being most unlovable."*
6. **Dr. Linda Martin:**  
*"Emotions are hard, but that's why they make you strong."*
7. **Detective Chloe Decker:**  
*"It's better to move forward than stay stuck in the past."*