

大连海瑞机械有限公司

Dalian Hairui Machinery Co., Ltd. (formerly Dalian Hongri Machinery Factory) set up in 1986, is a professional manufacturing trade import and export type industrial company. Plant area of 58,660 square meters, construction area of 14,700 square meters. Equipment registered capital of 30 million yuan. Existing staff 165 people, senior people, engineer 16 people.

the company has established a sound quality management system, through DNV classification society, ISO9001:2015 quality system certification, the foundry through Japan Classification Society NK recognition

The company mainly has: casting riveting machinery three workshops the main products are: deck machinery (performance :1450 ship) and outfitting parts offshore engineering machinery metallurgical machinery hydropower machinery port loading and unloading machinery a variety of non-standard equipment a variety of steel structure a variety of valves and filters and other products are mainly sold to Japan Germany, South Korea and other countries





日本主要客户一览表

—1986年~1988年	大庆石油	30万吨石化装备
1988年~1991年	大连重型机器厂（重工起重前身）	矿山机械
1991年~1997年	日本 VALTEC. LTD	高、中、低、旋塞等80余种阀门
1994年~1997年	烟中特殊阀门	各种阀门
1995年~2003年	芝冈产业（株）	船用甲板舾装件：导缆孔/导缆轮（FC、SC）密
1995年~1997年	日立造船	船用导缆孔/缆桩/齿轮/轴/铜瓦等加工件
1995年~2010年	东亚工业（株）	船用水、油滤器/止链器/离合器/绞盘/导缆孔/人孔等
1996年	日立制作所	发电机壳体、齿轮罩子（地铁用）
1996年	三菱重工名古屋工厂	注塑成型机拉杆（ $\phi 180*4700\text{mm}$ 镀铬精加工）
1997年~至今	三菱重工下关造船所	起锚机、系船绞车
2000年~至今	关原制作所	游艇绞车（救生、抢险）
2004年~至今	和幸产业代理	（川崎、福岛）起锚机、系船机
2005年	住友重工	岸桥起重机用行走装置；起重机用核心部件
2005年	三菱重工	地震试验用平台、船用克林吊底座
2006年	三菱化学品工业工程公司	水泥成套设备用锻烧炉
2006年~2010年	新日铁君津工厂	钢板轧机（冷轧、热轧）轴承座（铸钢+精加工）
2007年~2018年	林德集团空分装备	2008年 重工起
		重Reducer for mining
2015年~至今	Fuji Marine	Engineering ship parts
2010年~2011年	Oriental Steam	Turbine Low-pressure cylinder and rotor base
2011年	ABB	Marine propeller component
2012年	Mitsubishi Toshiba	Large motor parts

Maine products



Deck crane pedestal



Deck Crane



Life boat winch reducer



Deck hoisting and winching



Chain stopper



Marine electric winches

Marine parts



Windlass



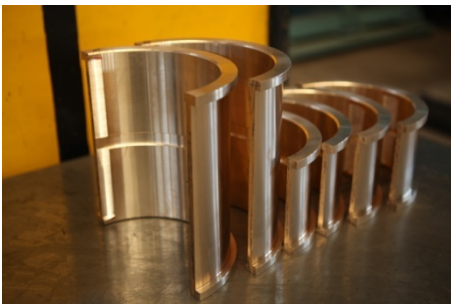
Sprockets (ϕ 117)



Electric thruster parts for ships



Large chain stopper



Copper tile



Sprockets

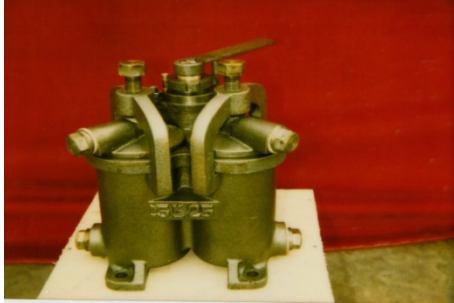
Deck Machine



Ship's oil tank cover



Guide wheels



Marine oil filters



Marine water filters



Winches



horizontal roller

Valves



Butterfly val ves



Ball val ves



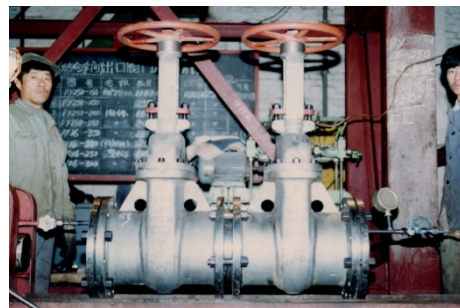
Plug val ve



Gate val ves



Valve high pressure flange

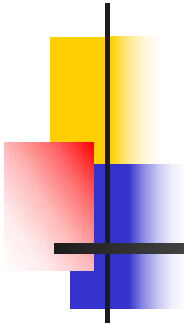


Gate valve pressure test



大连海瑞机械有限公司

Mining products



Speed reducer chassis



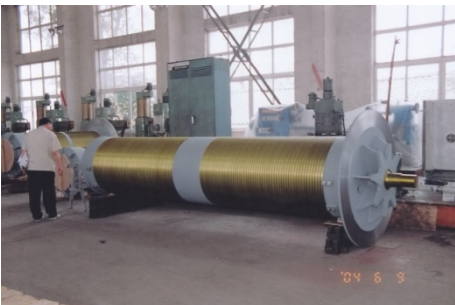
Dumper beams



Grinding machine parts



Mining Locomotives



Rope sheave



Transporters

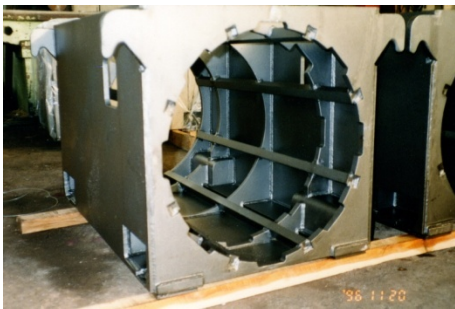
Electric Power
parts



turbi ne
components



Generator
housi ng



Generator housi ng



Flint furnace



Electric filters



Steam turbine
part

Products



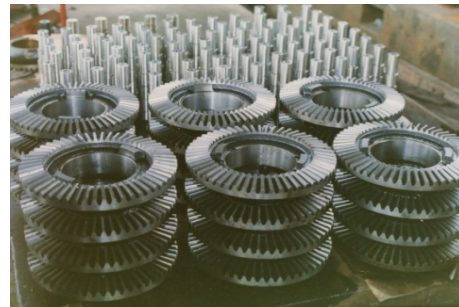
Large shaft bearing seat



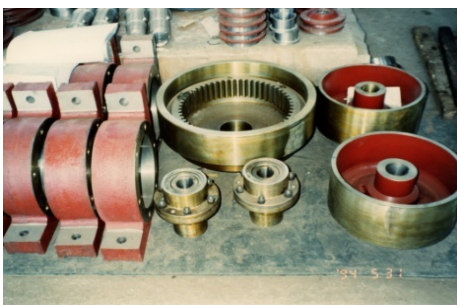
Large screws



Calcining furnace



bevel gear



Internal gear



Rope reel



Spiral shaft



Retarder

Casting



Casting work shop



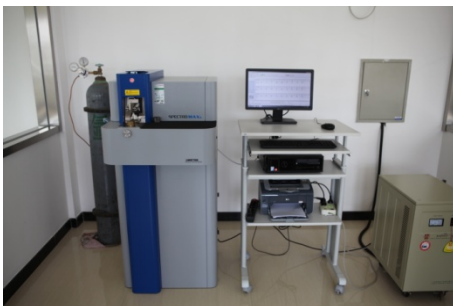
Casting shop



Heating treatment



Electronic metal phase
mi croscope



spectroscopic analysi s



Physi cal performance analysi s

Casting shop



船用发动机轴支架



轴 承 座



铸 钢 锚 链 轮



铸 钢 阀 体



缆 扣



铸 铜 铜 套

工场介绍

铆焊



charge make-up area



Riveting and welders



Stacker reclaimer platform



Large motor housing



Oil refinery towers



Normal pressure furnace

大连海瑞机械有限公司

Rivet Welding Products



Steam turbine inner cylinder



Steel ladle



Large power generation case



Lifting part for ship



Heat exchanger



Closure Head

大连海瑞机械有限公司

MACHINERY WORK SHOP



Machinery work shop 1#



Machinery work shop 2#



Machinery work shop 3#



Machinery work shop 4#



Assembling shop (Crane 100tons
)



Painting work shop

工场介绍

机械



φ200X16MX5M CNC milling machine



φ320X6MX5M CNC floor milling



φ130X4M Boring machine



Horizontal machining center 1.2M*1.4M



Digital display gantry mill 2.5m*10m



1.5m*7m Milling Machine



Digital mill 2.7m*7m



Boring Machine 3000X1700X2000X1000

工场介绍

机械



Lathe $\phi 2m * 3m$



Lathe $3.2m * 10m$



Cylindrical grinding machine $\phi 800cm * 8m$



Lathe $\phi 1.25m * 16m$



Digital Lathe $\phi 5m * 3.15m$



Single Arm Lathe $\phi 12.5m * 5m$



Gear hobbing machine $\phi 3m$ Modulus30



Gear hobbing machine $\phi 2m$ Modulus 24

