

# newsletter

It is sad to relate that we have lost two much loved and respected long standing members of the Society during this last year: Edwin Barritt and Anne Paterson Wallace. You will see this reflected in the affectionate **Obituaries**.

The Winter Talk Series is moving to the Spring and we are experimenting with moving them to the afternoon rather than the evening. Some of the talks last year were more scantily attended than in the past and the committee conjectured that this may be to do with having to venture out on dark winter evenings. So, as a trial this year we are moving later in the year - to what we hope will be more clement weather - and to the afternoon, to see if that might widen the appeal to our membership and the public. We are just holding two this year to see how the experiment works and we have two excellent speakers. See **Spring Talks** for details.

The 2018 Annual Open Exhibition at the Ipswich Art Gallery was a great success as ever. As reported in the last Newsletter we had a larger than ever volume of submissions, which is excellent news. Anticipating a similar response this year we will be making a couple of adjustments. The first is the selection process, which will be amended to help include more works and reduce the number of disappointments. The second concerns the **framing and fixings**. We will not be able to handle the volume of works if such a large proportion of works continue to have the wrong fixings. This took the continuous hard work of more than two long-suffering people for the whole of the two submission days and beyond. **This year we will need to reject work that is not fitted as described on the Entry Forms and Website.** Please read the instructions carefully! A new deal with the Gallery means that we have more control, **but will need to invigilate** (as we once did). So please expect to volunteer for a slot or two during the run.



*My Mum* by George Hunt

The Anna Airy Award Exhibition was a stellar event as ever. Another amazing achievement of Jan Watson in co-ordinating all the complexities against the shifting sands of the University in the form of their changing dates, personnel, relationship with other schemes etc. The end result, however was as smooth and professional as ever, supported by the hard work of Sue and Colin Slee, Derek Chambers, Peter McCarthy, Paul Bowman, Malcolm Moseley and Marcia Whiting, and described in a double page spread in the East Anglian Daily Times as 'one of the most exciting shows in Ipswich this year'. Thanks to Andrew Casey for ensuring that the press attended. The Anna Airy Award (for painting) was judged by Graham Crowley, former professor at the Royal College of Art. The Ipswich Art Society award (for any media) was judged by Viola Jones of Arts Society South East (formally IDFAS) who once again very generously provided the prize money.

The success of the Pictures for Christmas exhibition, held for the first time in November 2017, has been repeated in 2018. Sales were healthy, even in these distract'd times.

The increased number of hits on the website and Facebook help demonstrate that, along with everything else, the world is moving online. This is very healthy for us in increasing public awareness and also gives us a route to make information more quickly available to the membership. The Newsletter will still be there as a backstop, as will the occasional use of email as before, but these new means will become more the norm as time goes on, so keep an eye on the website.

*Stephen Cassidy, Chairman*

## Dates for your Diary

**Spring Talks - Please note that the Talks are moving to Monday afternoons as a trial this year.**

Join us for an interesting afternoon in a relaxed atmosphere, with refreshments, in the Co-op Education Centre, 11 Fore Street, Ipswich IP4 1JW. Plentiful parking at the rear, accessible from Waterworks Street. Members and Friends free, non members £2.50.

### **Di Grace on *Remembering Benton End* Monday 29 April 2pm**

Di Grace describes how she and Gwynneth Reynolds set about capturing memories of the East Anglian School of Painting and Drawing at Benton End, Hadleigh founded in 1937 by artists Sir Cedric Morris and Arthur Lett-Haines. A fascinating story recorded in their book *Remembering Benton End*.



### **Bill Crow on Samuel Rabin - artist Monday 20 May 2pm**

As well as a pupil of Adolphe Valette at the Manchester Art School and Henry Tonks at the Slade, and then a teacher of Bridget Riley, Mary Quant and Tom Keating, this extraordinary man was also a professional singer and actor, boxer and Olympic medallist in wrestling. Come and hear more! Bill Crow is an art historian and entertaining speaker.

---

### **Annual General Meeting Monday 25 March 7.30pm**

The Co-op Education Centre 11 Fore Street, Ipswich IP4 1JW Parking as above.

A review of the Ipswich Art Society's activities over the past 12 months and a look ahead to the coming year. A chance to make suggestions, volunteer your services and exchange ideas with fellow members. **Followed by a talk by Sue Wallace Shaddad commemorating her mother Anne Paterson Wallace, an illustrious artist from a celebrated artistic lineage.**

### **142nd Annual Open Exhibition 25 May - 30 June 2019**

The special feature this year is a retrospective of Ken Cuthbert, who is well known as a past President of the Society, pupil of Cor Visser and teacher to many of the Art Society members. The hand-in dates will be in the week beginning 13 May. Details and entry forms will be mailed out and also appear on the website.

---

## Members news

### **A special welcome and congratulations to our new members:**

Julie Adams, Martin Coe, Guy William Eves, Tricia Newell, Sula Rubens, Zoe Rubens, Dorothy Stokes, Ursula Stroh-Rubens, John Talman and Bryan Whiteley.

### **Honorary Life Membership**

We are pleased to announce the awarding of Honorary Life Membership to Jennifer Hall who has given her time and energy to the Society in many ways over many years.

### **Obituary - Anne Paterson Wallace (1923 - 2017)**

Anne was an amazing and dedicated woman. She joined the Ipswich Art Society in 1973, became a committee member for many years and Chairman from 1988 to 1991. Like Anna Airy she encouraged young artists. I first met Anne in 1985 and found her so encouraging and so full of energy. When I first showed my work in Sudbury she sent me a hand painted card to wish me good luck.

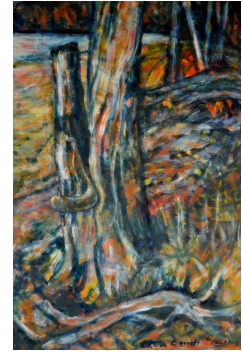


Anne was born in Scotland and was member of the distinguished Paterson family of artists, being the grand-daughter of James Paterson. During the Second World War she served in Special Branch in the Women's Royal Naval Service and was awarded a grant to study at Chelsea School of Art in 1946 -49. In 1950 she gained the National Diploma of Illustration and Design. Anne showed her work extensively in various exhibitions and was a member of several societies including the New English Art Club, the Pastel Society and the Royal Watercolour Society. In 1985 Anne established her own group Eight plus one (8 + 1).

Andrew Casey

### Obituary - Edwin Barritt (1938 - 2018)

In September last year the IAS lost a valued and much loved member when Edwin Barritt died after a long illness aged 79. Ed read Geography at Cambridge University and held a position as County Planning Officer for Suffolk until he retired in 1995. He had been painting watercolours since the 1980s, receiving tuition from Ken Cuthbert and had had a watercolour exhibited at the Laing collection Exhibition in Ipswich and the Mall Galleries in 1989.



On retirement he began a course in Art and Design at Suffolk College where he obtained a degree in 1998. He became a Friend of the IAS in the year 2000 and joined us as a full member in 2004 having exhibited in the Society's Annual Open Exhibition in 2003. Ed's oil paintings are well known around Ipswich often featuring massive systems of trees and their roots, or views of the supporting structures of Felixstowe Pier, all painted in a startlingly bold and direct style, sometimes reminding one of Cezanne. Ed also enjoyed paintings of the nude and stone ruins in the jungle-like forests he encountered on his travels. He was a man of deep intellect and enjoyed lively debates amongst his artist friends, by whom he is greatly missed.

*Charles Nightingale*

---

### Kiss and Tell: Rodin and Suffolk Sculpture *Christchurch Mansion, Ipswich until Sunday 28 April.*

The arrival of Rodin's Kiss and display of related sculptures and artworks from the Ipswich collection made national news, and the attentions of the BBC's chief arts correspondent, Will Gomperts. The centrepiece is of course impressive, but what has come out of storage to be shown alongside is worth seeing in itself, in Emma Roodhouse's imaginative curation. On show are sculptures from the Ipswich collection, including works by Pre-Raphaelite sculptor Thomas Woolner, Ellen Mary Rope, Maggi Hambling and Elisabeth Frink as well as life drawings by John Constable.



### Women 100 *Ipswich Art Gallery, High Street, Ipswich until Friday 5 April*

Marking the centenary of women's suffrage, 100 artworks by women artists have been brought together from the Ipswich Borough collection. Highlights include paintings by Rose Mead, an active member of the Society of Women Artists, Anna Airy, the first woman president of the Ipswich Art Society, and sculptures by Ellen Mary Rope and a unique collection of First World War pastel sketches by Blanche G Vulliamy that reveal London's streets. Contemporary artists Maggi Hambling, Jelly Green and more will also be on show. The whole room devoted to Suffolk suffragette A K Browning is worth the trip on its own.

---

### Art Classes

Michael Norman's summer sketching class (Monday and Tuesday afternoons) starts in mid-May, visiting a number of locations in the vicinity. They are popular and friendly gatherings at Michael's studio in Woolverstone. The fee is £85 for a 10 week term. Contact 01473 780393 for details.

---

### Subscriptions

Annual subscriptions, which are £25 for Members and £15 for Friends, were due on 1 January. Any outstanding payments can be made by standing order or Bank transfer to the Society's account: sort code 53-61-24, number 71334432. Alternatively, please send a cheque to the Treasurer, Chris Edmondson, 89 Bucklesham Road, Ipswich IP3 8TT.

**Please send information for the next Newsletter on ideas, shows, news, details of exhibitions etc. to Stephen Cassidy, Newsletter Editor, 62 Constable Road, Ipswich IP4 2UZ.**

**[stephen.cassidy@btinternet.com](mailto:stephen.cassidy@btinternet.com) 01473 250284**

*Many thanks to Christine Thompson for Newsletter and other postings.*