

# SUPPORTING SANTA FE

*Together We Can Make a Difference!*



*“There is such need  
right now.  
Thank you  
Las Campanas!”*  
Tierra Nueva Counseling Center



# WHAT YOUR SUPPORT MEANS

Page 2 | 2021 Community Grants Annual Appeal



***“We are so appreciative of the LCCF members and their support of our community!”***

Esperanza Shelter

***“What fabulous news! Thank you so much for trusting us to do the work that we do in the community.”***

Adelante Program of Santa Fe Public Schools



***“Your funding has helped us better our food programs during these difficult times and for that we are truly grateful to have such wonderful people backing our mission.”***

Bienvenidos Outreach





Holidays 2021

Dear Las Campanas Friends and Neighbors,

Because of the generosity of Las Campanas members who join forces every holiday season, since 2002 the Las Campanas Community Funds (LCCF) has awarded 183 community grants totaling more than \$943,000 to Santa Fe non-profit organizations, serving people in need and supporting the quality of life in Santa Fe.

We are asking you to bring the spirit of Las Campanas to life and support our beloved Santa Fe community at a time when the needs are great.

As the COVID-19 pandemic endures, our local nonprofit organizations continue to serve basic human needs at unprecedented levels. Food, clothing, shelter, job security, vulnerable population outreach and youth education programs are the priority funding areas for LCCF grants this year.

**Our 2021 goal is to raise \$250,000.**

Please consider making a tax-deductible contribution to support these deserving agencies...

- **New This Year...**With a contribution of \$2,500 or more, you may designate where you would like your gift to be directed from the following list of 29 deserving organizations. What a great way to be a part of LCCF and support your favorite agency from our list of grantees.
- First-time donors to the community grants fund will have their contributions of \$500 and above matched from our \$25,000 matching fund.
- If you prefer to donate appreciated stock or contribute funds from your personal foundation or donor-advised fund, detailed instructions may be found at [lascampanascommunityfunds.org/how-to-give](http://lascampanascommunityfunds.org/how-to-give).
- For any questions or assistance, please contact John Wilcynski, Community Grants Chair, [johnwilcynski@gmail.com](mailto:johnwilcynski@gmail.com).

For your convenience, a Contribution Form is included on page 7. To be recognized in the donor appreciation materials, please make your contribution by **Friday, December 10th**.

Thank you for your support and for including LCCF in your year-end giving. Your one gift will help so many deserving non-profit agencies and sustain Las Campanas as a visible, positive and contributing part of the Santa Fe community and culture!

We thank you for joining us,

Lori Adcock, M.D.  
John Bernstein  
C.T. Herman

Lucy Higgins  
Lisa Shover Kackley  
Cathy Kalenian

Mac McDonald  
Carol McDonald  
Diane Primrose

Donna Ralph  
Linda Smith  
John Wilcynski

The Las Campanas Community Funds Committee

# YOUR ONE GIFT...HELPS SO MANY!

Page 4 | 2021 Community Grants Annual Appeal

## 2021 COMMUNITY FUNDS GRANTS

Our grantees provide services that support **HEALTH, HUMAN SERVICES** and **EDUCATION** in the greater Santa Fe Community.



**Adelante Program of SFPS**  
Provides services for Pre-K to 12th grade students and their families experiencing homelessness.



**Communities in Schools**  
Connects students at high-poverty schools with wrap-around services, empowering them to stay in school and achieve in life.



**Bag 'n Hand Food Pantry**  
Distributes nutritious food in a caring environment to the hungry in Santa Fe.



**Cooking with Kids**  
Educates and empowers children and families to make healthy food choices through hands-on nutrition education with fresh, affordable foods.



**Bienvenidos Outreach**  
Supplies food and clothing to those in need in Santa Fe.



**Esperanza Shelter**  
Provides trauma-informed care to individuals and family members experiencing domestic violence to break the cycle of violence



**Breakthrough Santa Fe**  
Identifies motivated, underserved middle school students and supports them on a path toward college.



**The Food Depot**  
Supports acute hunger relief services across northern New Mexico from mobile and permanent pantries and a network of partner agencies.



**Caregiver Wellness Retreat**  
Offers respite care for family caregivers serving loved ones with Alzheimer's and dementia.



**Girls Inc. of Santa Fe**  
Serves and inspires all girls to be strong, smart and bold.



**CASA First**  
Supports court-appointed volunteer advocacy to assist and advocate for abused and neglected foster children so they can be safe, have a permanent home and thrive.



**Interfaith Community Shelter**  
Provides shelter and support services to anyone seeking aid, regardless of condition or circumstance.



**Casa Milagro**  
Provides a home and supportive services to individuals who were previously homeless.



**Kitchen Angels**  
Delivers free nutritious meals to homebound individuals living with chronic, life threatening or terminal illnesses.



# YOUR ONE GIFT...HELPS SO MANY!

Holidays 2021 | Page 4



**La Familia Medical Center**  
Provides medical, dental and behavioral health services to individuals and families in need, regardless of ability to pay.



**Solace Crisis Treatment Center**  
Empowers children and adults who have been victims of sexual assault.



**Literacy Volunteers of Santa Fe**  
Offers free tutoring to adults in reading, writing and speaking English, enabling individuals to attain their goals and fully participate in society.



**Southwestern College - Tierra Nueva Counseling Center**  
Supports affordable, accessible client-centered holistic mental and behavioral healthcare services.



**National Dance Institute New Mexico**  
Engages at-risk and low-income youth who develop discipline and belief in themselves through dance.



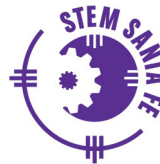
**St. Elizabeth Shelters**  
Provides emergency shelter, food and services to the most vulnerable, with a goal to end the cycle of homelessness altogether.



**Punching Out Parkinson's - Rock Steady Boxing**  
Assists those with Parkinson's with postural stability and gait difficulty to improve their quality of life.



**Reading Quest**  
Provides free structured literacy tutoring and training for literacy volunteers.



**STEM Santa Fe**  
Presents STEM programming, mentoring and resources for all youth to realize their potential.



**Resolve**  
Teaches youth to prevent violence in their communities through school collaborations.



**The Sky Center**  
Offers free youth suicide prevention counseling services to teens and families.



**Santa Fe Alliance for Science**  
Inspires the inner scientists in students by creating STEM learning and discovery opportunities.



**Youth Shelters and Family Services**  
Delivers life-changing shelter and support for homeless, runaway and in-crisis youth.



**Santa Fe Children's Museum**  
Builds upon a child's sense of discovery, cultivating inquiry in the arts, sciences and humanities.



**Youth Works**  
Helps youth develop the necessary life skills to become active, productive participants in their community.



# HOW WE MAKE GRANTS

Page 6 | 2021 Community Grants Annual Appeal

Thank you for supporting Community Grants,

As the previous pages share, LCCF has selected 29 outstanding nonprofit organizations providing Health, Human Services and Education support to residents in Santa Fe. Without exception, these agencies are creating brighter tomorrows for so many!

We are pleased to share with you how our family of grantees came together.

## Our Selection Criteria

LCCF is a donor advised fund of Santa Fe Community Foundation (SFCF), which opens the door for us to its deep local ties, resources and a staff with great community expertise. We, as the Community Grants committee, work hand-in-hand with SFCF's grants staff to reach local organizations where our dollars will have the greatest impact.

- Our grantees are SFCF approved and vetted not-for-profit agencies serving health, human services and education in the Santa Fe metro area.
- Our funding is distributed evenly between these service areas with grants generally ranging from \$5,000 to \$10,000.
- Our review highlighted and provided consideration to organizations where Las Campanas members volunteer.
- Our final list of 29 grantees was presented to the LCCF full committee for individual discussion, review and formal approval as a 2021 Holiday Grant recipient.

The Covid pandemic has put Santa Fe's non-profit organizations under high stress. Service demand has increased to unprecedented levels, budgets are brittle and relied upon fundraising tools have been stifled due to social distancing requirements, agencies are facing staffing challenges and employee burnout, organizations are adapting to virtual service models and modified client interactions while still meeting increased demand. The LCCF Community Grants program is honored to serve the interests of the Las Campanas members in extending our generosity to the Santa Fe community.

These unprecedented times are a call for us all to step forward and give what we can to serve our community. Whether this is your part- or full-time home, Santa Fe provides us all with an unparalleled lifestyle we are all so lucky to enjoy. Your one gift will be serving so many.

Please give generously.



John Wilczynski  
Chair, Community Grants



Lucy Higgins  
Vice-Chair, Community Grants

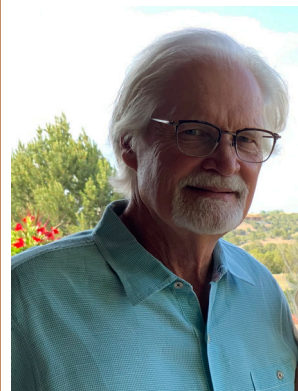
## DID YOU KNOW?



**74.8%**  
of students in Santa Fe  
public schools qualify  
for free and reduced  
school lunch.\*

*\*A national indicator for kids that live in poverty.*

## IN RECOGNITION Gary Fisher



*Gary, your devotion to the Santa Fe non-profit community has made LCCF a respected leader.*

*Thank you for your years of service to LCCF and the Community Grants program!*

# DONATE NOW!

Holidays 2021 | Page 7



Las Campanas Community Funds

## Las Campanas Community Grants Program 2021 Contributions

### DONOR INFORMATION

Name	Email
I/we would like to be acknowledged as:	

### DONATION LEVELS

All donor contributions receive recognition in *El Vocero* and Las Campanas member publications.

<b>Check one:</b>	<input type="checkbox"/> <b>Emerald</b> (\$10,000 and above)	<input type="checkbox"/> <b>Gold</b> (\$1,000 - \$2,499)
	<input type="checkbox"/> <b>Diamond</b> (\$5,000 - \$9,999)	<input type="checkbox"/> <b>Silver</b> (\$500 - \$999)
	<input type="checkbox"/> <b>Platinum</b> (\$2,500 - \$4,999)	<input type="checkbox"/> <b>Bronze</b> (under \$500)
I/we are first-time donors to the Community Grants Program (\$500 and above), so this donation qualifies for matching funds: <input type="checkbox"/> <b>Yes</b> <input type="checkbox"/> <b>No</b> <input type="checkbox"/> <b>Not sure</b>		
I/we would like to designate this gift to the following non-profit(s) from the 2021 LCCF grantee list (minimum \$2,500):		

### DONATION INSTRUCTIONS *Please donate by December 10, 2021, to ensure proper recognition.*

<input type="checkbox"/> <b>Check enclosed:</b> Make your check payable to the <u>Santa Fe Community Foundation</u> , noting in the memo section, " <u>LCCF Community Grants Program</u> ." Drop off or mail as indicated below.
<input type="checkbox"/> <b>Credit card:</b> Circle one: <b>MC</b> <b>Visa</b> <b>AMEX</b> Please charge \$_____ to my card Card number _____ Exp. date _____ Name on card _____ Signature _____
<input type="checkbox"/> <b>Donor Advised Funds (DAF), IRA RMD, stock, or Charitable Foundations:</b> Please see instructions on the LCCF website at: <a href="http://lascampanascommunityfunds.org/how-to-give">lascampanascommunityfunds.org/how-to-give</a> then return this form so we can properly acknowledge your gift.

*All donations made by check, credit card, DAF, RMD, stock, or Charitable Foundation are tax deductible; those charged to individual Las Campanas member accounts are not.*

**Questions?** Contact Community Grants Chair, John Wilcynski, [johnwilcynski@gmail.com](mailto:johnwilcynski@gmail.com)

**Please drop this completed form with your check (if appropriate) at the member services desk, or mail to:**

Cathy Kalenian, Treasurer  
Las Campanas Community Funds  
12 Bishops Dome Road, Santa Fe, NM 87506

Cut Along Dotted Line

# WHY SUPPORT LCCF

Page 8 | 2021 Community Grants Annual Appeal

## Inward to Employees with Scholarships Outward to Santa Fe with Community Grants

Since 2002, the members of The Club at Las Campanas have recognized the importance of balancing support to non-profit organizations serving Santa Fe with the need to invest in the future of our employees.

The Las Campanas Community Funds (LCCF) supports:

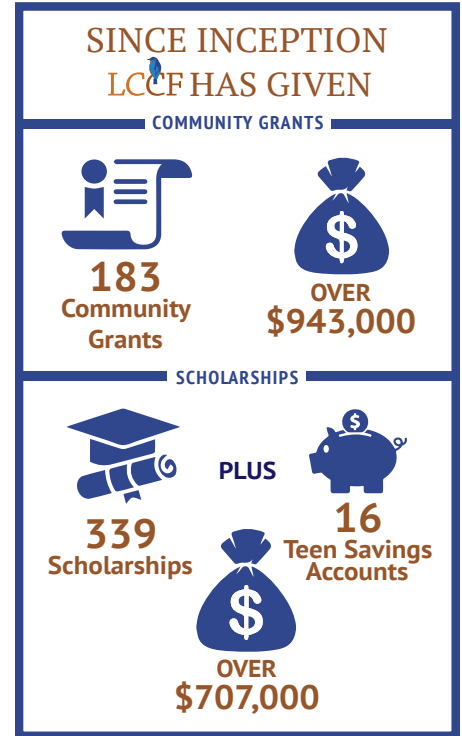
- **Community Grants** helping people in need and supporting the quality of life in Santa Fe
- **Scholarships** for Las Campanas employees and their families.

Las Campanas member donations and planned gifts, earned interest from the funds' corpus and fundraising activities such as the Annual Appeal, the Scholarship Classic and Las Campanas Art Auction, support LCCF's two areas of giving.

LCCF is an independent, donor-directed fund of the Santa Fe Community Foundation (SFCF). LCCF utilizes the financial and grants administrative services at SFCF, providing access to amazing talents without incurring the administrative burden and expense of a private foundation.

The LCCF Committee, with annual member input, makes all grant and scholarship decisions independently.

LCCF receives no revenue from The Club at Las Campanas, has no paid staff and is managed by a volunteer committee comprised of Las Campanas members. All donations to LCCF are fully tax deductible.



To join LCCF in making a difference,  
please go to:  
[lascampanascommunityfunds.org](http://lascampanascommunityfunds.org)

*“Thank you so much for your continued support of literacy in our community. We are excited to start up an ESL worksite at Las Campanas again. We look forward to our partnership.”*

Literacy Volunteers of Santa Fe

