

## SUPPORTING SANTA FE

*Together We Can Make a Difference!*



### EDUCATION



### HEALTH



### HUMAN SERVICES



Holidays 2023

# WHAT YOUR SUPPORT MEANS

Page 2 | Community Grants Annual Appeal



“

*It is intimidating to walk a path never taken by anyone you know, but once you've come to see your way around you can guide those who come after you. We hope to instill seeds of change not only our current students but also in their families and surrounding community.*

Carolina Tavarez, College & Career Plaza  
Program Coordinator

”

“

*I believe it has helped my children to try new foods and they also seem to want to help more in the kitchen. I've also enjoyed trying new recipes. I'm very thankful that my children get to be a part of this valuable program and hope that it continues.*

Cooking with Kids parent

”



“

*If I had not been assigned as her CASA, I don't think anyone would have attended Stephanie's high school graduation. Being there gave her hope that people do care.*

CASA First volunteerr



”



# WITH YOU, LCCF IS MAKING A DIFFERENCE

Holidays 2023 | Page 3



Holidays 2023

Dear Las Campanas Friends and Neighbors,

Las Campanas Community Funds (LCCF) has been supporting nonprofits in the greater Santa Fe area since 2002, awarding more than \$2,000,000 over these 20 years. Last year alone, LCCF gave \$600,000 to organizations to help address our community's needs for support in education, health, and human services. We aspire to build upon our tradition of philanthropic outreach and strengthen our impact in order to provide even more support to those in need in our beloved Santa Fe.

The needs of our communities remain high. Some examples include education gaps for students with only 33% of Santa Fe Public School students being proficient in reading at grade level. Health outcomes suffer due to food insecurity at nearly 20% for those in northern New Mexico and lack of access to health care providers. Domestic abuse and lack of shelter are persistent challenges as well.

LCCF Community Grants Committee made more than 35 site visits to local nonprofits to learn about their current needs, assess capacity to act, and ascertain outcomes in the communities served. Impressed by the commitment and improvements of these organizations, the Grants Committee gained approval to fund 28 Santa Fe area nonprofit organizations for the 2023 Annual Appeal. Priority funding areas for LCCF grants this year are once again focused on improving education, health, and human services.

Our goals are to achieve at least 50% participation from members in 2023 and to reach \$1M in grants awarded annually by 2025. Supporting nonprofits in Santa Fe through LCCF is easy to do and has a high impact. Please note the following as you consider your donation this year:

- Your single gift could benefit 28 organizations in Santa Fe if you do not request a designation.
- You may request a designation of your gift to any of the 28 selected organizations when giving at least \$2,500 to that agency. Multiple designation requests are possible.
- All first-time contributions of \$500 and above will be matched from a \$25,000 matching fund.
- If you prefer to donate stock, contribute funds from your personal foundation, RMD, or a donor-advised fund, detailed instructions may be found at [lascampanascommunityfunds.org/how-to-give](https://lascampanascommunityfunds.org/how-to-give).
- For any questions or comments, please contact John Bernstein, Community Grants Chair, [grants@lascampanascommunityfunds.com](mailto:grants@lascampanascommunityfunds.com).

Thank you for including support to the Santa Fe area through LCCF in your philanthropy. For your convenience, a Contribution Form is included on page 7. We are very grateful for your generosity and compassion. Your gift will help nonprofit organizations and the people they serve in Santa Fe!

Lori Adcock, M.D.  
Kim Ariano  
John Bernstein

Karen Dealy  
Gayle Forehand  
Bob Gouy

Skip Helm  
C.T. Herman, Emeritus  
Lucy Higgins

Denise Rutherford  
Jim Samis  
John Wilcynski

Las Campanas Community Funds Board

*Together We Make a Difference!*

# 2023 LCCF GRANTEES

Page 4 | Community Grants Annual Appeal

Our grantees provide services that support **EDUCATION, HEALTH, and HUMAN SERVICES**

## EDUCATION



### Breakthrough Santa Fe

Identifies motivated, under-served middle school students and supports them on a path toward college.



### College and Career Plaza

Provides career and college mentoring and strategic guidance to high school students in Santa Fe and northern New Mexico.



### Communities in Schools

Addresses the academic and nonacademic needs of students, identifying students at risk of dropping out to ensure they stay in school and achieve in life.



### Cooking with Kids

Educates and empowers children and families to make healthy food choices through hands-on nutrition education with fresh, affordable foods.



### First Serve New Mexico

Improves educational and life outcomes for Santa Fe's children through academic support, life skills mentoring, and intensive tennis training.



### Girls Inc. of Santa Fe

Serves and inspires all girls to be strong, smart, and bold.



### Growing Up New Mexico

Supports families through the earliest years by creating increased opportunities for young children and the adults in their lives to achieve their dreams.



### Literacy Volunteers of Santa Fe

Offers free tutoring to adults in reading, writing, and speaking English, enabling individuals to fully participate in society.



### National Dance Institute New Mexico

Engages at-risk and low-income youth who develop discipline and belief in themselves through dance.



### Reading Quest

Provides free structured literacy tutoring and social emotional support for hundreds of striving readers.



### Santa Fe Alliance for Science

Inspires the inner scientists in students by creating STEM learning and discovery opportunities.



### Santa Fe Children's Museum

Builds upon a child's sense of discovery, cultivating inquiry in the arts, sciences, and humanities.

## HEALTH



### Bag 'n Hand Food Pantry

Distributes nutritious food in a caring environment to the hungry in Santa Fe.



### The Birthing Tree

Provides compassionate, comprehensive birth and postpartum doula services as well as high-quality parent classes in Northern New Mexico.



### The Food Depot

Supports acute hunger relief services across northern New Mexico from mobile and permanent pantries and a network of partner agencies.



### Kitchen Angels

Delivers free nutritious meals to homebound individuals living with chronic, life threatening, or terminal illnesses.



### La Familia Medical Center

Provides medical, dental, and behavioral health services to individuals and families in need, regardless of ability to pay.



### The Memory Care Alliance

Provides support, education, and resources for families living with Alzheimer's and other dementia-related illnesses.



### Punching Out Parkinson's

Assists those with Parkinson's with postural stability and gait difficulty to improve their quality of life.



### The Sky Center

Offers free youth suicide prevention counseling services to teens and families.



Communities in Schools



Kitchen Angels

# YOUR ONE GIFT...HELPS SO MANY!

Holidays 2023 | Page 5

ES in the greater Santa Fe Community.

## HUMAN SERVICES



### CASA First

Supports court-appointed volunteers to assist and advocate for abused and neglected foster children so they can be safe, have a permanent home, and thrive.



### Esperanza Shelter

Provides trauma-informed care to individuals and family members experiencing domestic violence to break the cycle of violence.



### Gerard's House

Provides a safe place for grieving children, teens, and families, where healing happens through acceptance and peer support.



### The Interfaith Community Shelter

Offers hope and comprehensive services in a safe place for anyone who is homeless or vulnerable as they overcome adversity.



### The Life Link

Helps homeless and displaced individuals and families achieve self sufficiency through comprehensive support programs.



### Solace Crisis Treatment Center

Empowers children and adults who have been victims of sexual assault.



### Villages of Santa Fe

Provides seniors the opportunity to join exercise classes, skill building sessions, and mental resiliency coaching in a highly social environment.



### Youth Shelters and Family Services

Delivers life-changing shelter and support for homeless, runaway, and in-crisis youth.



“

*Tutoring has given me a sense of purpose that has redefined my life. The more that I put into it, the more that I get out.*

- Literacy Volunteers tutor

”

“

*My life has seemed impossible at times. I needed a lift, and Kitchen Angels has given me that lift.”*

- Kitchen Angels client

”

“

*Aging is challenging! Anything that helps my balance, strength, and general attitude is so important to me.*

- Villages of Santa Fe participant

”



# HOW & WHY WE MAKE GRANTS

Page 6 | Community Grants Annual Appeal

Thank you for supporting Community Grants!

As described in this Special Edition *El Vocero*, the LCCF has selected 28 outstanding nonprofit organizations providing Education, Health, and Human Services support to residents in Santa Fe. Without exception, these agencies are creating brighter tomorrows for so many! We are pleased to share with you how our family of grantees came together.

LCCF is a component fund of Santa Fe Community Foundation (SFCF). For LCCF to optimally reach those in need, we leverage SFCF's comprehensive list of prescreened, highly effective local organizations making outsized positive impacts in our community. Our donors may request a gift designation for \$2,500/agency or greater to any of the nonprofits on our grantee list for this year.

## The Needs are Great

New Mexico is the Land of Enchantment and Santa Fe is the City Different. However, our local communities are not immune from some of the most challenging social and economic difficulties facing families today, such as severe shortage of affordable housing, food insecurity, domestic violence, poor access to healthcare, and struggling educational outcomes. The agencies that LCCF has selected are working on the front lines, day after day, to improve lives for those in Santa Fe County. Your gift could be serving so many. Let us give generously to our communities.

## Selection Criteria

The LCCF Community Grants committee works hand-in-hand with SFCF's grants staff to reach local organizations where our dollars will have the greatest impact.

- Our grantees are SFCF approved and vetted nonprofit agencies serving education, health, and human services primarily in the Santa Fe metro area. For grantees who serve a larger geographic area, we restrict our grant to use in Santa Fe County.
- Our funding is distributed between the above service areas, with grants generally ranging from \$5,000 to \$50,000, depending on the size of the organization, designation requests, and total funds raised.
- Our review process includes site visits to all organizations considered and provides consideration to organizations where Las Campanas members are active volunteers.
- Our final list of 28 grantees was presented to the LCCF board for individual discussion, review, and formal approval.

In 2022, members at Las Campanas rallied to support the selected nonprofits by increasing donations to LCCF Community Grants to more than \$600K with 31%-member participation rate. We are aiming higher to be able to increase our support of those in need in our community.

Please give generously. We welcome your feedback.

*John Bernstein*

Community Grants Chair

[grants@lascampanascommunityfunds.org](mailto:grants@lascampanascommunityfunds.org)

## Community Grants Committee Leaders

Education: Karen Dealy and Jim Samis

Health: Lori Adcock and Skip Helm

Human Services: Gayle Forehand and Lucy Higgins



# DONATE NOW!

Holidays 2023 | Page 7



## Las Campanas Community Grants Program 2023 Contributions

### DONOR INFORMATION

Name	Email
I/we would like to be acknowledged as:	

### DONATION LEVELS

I/we would like to donate: \$ _____	<b>Emerald</b> (\$10,000 & above) <b>Diamond</b> (\$5,000 - \$9,999) <b>Platinum</b> (\$2,500 - \$4,999)	<b>Gold</b> (\$1,000 - \$2,499) <b>Silver</b> (\$500 - \$999) <b>Bronze</b> (under \$500)
I/we would like to request designation of our gift to the following nonprofit(s) from the 2023 LCCF grantee list (minimum \$2,500/designee). Multiple requests are possible. _____		
I/we are first-time donors to the Community Grants Program (\$500 and above), so this donation qualifies for matching funds: <input type="checkbox"/> <b>Yes</b> <input type="checkbox"/> <b>No</b> <input type="checkbox"/> <b>Not sure</b>		
This gift is <input type="checkbox"/> in honor of <input type="checkbox"/> in memory of _____		

*All donor contributions receive recognition in LCCF publications.*

### DONATION INSTRUCTIONS

<input type="checkbox"/> <b>Check</b> enclosed: Make your check payable to the <u>Santa Fe Community Foundation</u> , noting in the memo section, " <u>LCCF Community Grants.</u> " Drop off or mail as indicated below.
<input type="checkbox"/> <b>Credit card:</b> Circle one: <b>MC</b> <b>Visa</b> <b>AMEX</b> Please charge \$ _____ to my credit card Card number _____ Exp. date _____ Card security code _____ Name on card _____ Signature _____
<input type="checkbox"/> <b>Donor Advised Funds (DAF), IRA RMD, stock or Charitable Foundations:</b> Please see instructions on the LCCF website at: <a href="http://lascampanascommunityfunds.org/how-to-give">lascampanascommunityfunds.org/how-to-give</a> then return this form so we can properly acknowledge your gift.

*All donations made by check, credit card, DAF, RMD, stock, or Charitable Foundation are tax deductible; those charged to individual Las Campanas member accounts are not.*

**Questions?** Contact Community Grants Chair, John Bernstein, [grants@lascampanascommunityfunds.org](mailto:grants@lascampanascommunityfunds.org) or Treasurer, Lucy Higgins, [treasurer@lascampanascommunityfunds.org](mailto:treasurer@lascampanascommunityfunds.org)

**Please drop this completed form with your check (if appropriate)  
at the member services desk, or mail to:**

Lucy Higgins, Treasurer  
Las Campanas Community Funds  
1 Agua Dulce, Santa Fe, NM 87506

Cut Along Dotted Line

# WHY SUPPORT LCCF

Page 8 | Community Grants Annual Appeal

## Outward to Santa Fe with Community Grants

Las Campanas is an extremely generous community with a growing reputation for our philanthropy to Santa Fe communities. Through LCCF, we are meaningfully impacting nonprofits serving those in need in the Santa Fe area while enhancing the image of Las Campanas as a caring, giving, civic-minded membership. The LCCF board is striving to make LCCF programs appealing and compelling to the philanthropic interests of Club members while addressing the local communities' greatest needs. We hope you'll seriously consider this opportunity and give generously to our selected grantees this year.

## Inward to Employees with Scholarships

Since 2014, LCCF has awarded 419 scholarships totaling \$1,100,000 to eligible employees and families of employees of The Club. During 2023, we supported 30 scholars who have attended 14 schools in 9 states in the US and in the UK. Funding for the Scholarship Program comes primarily from member donations during an early summer fundraising campaign at the Annual Scholarship Classic & Employee Appreciation Day.

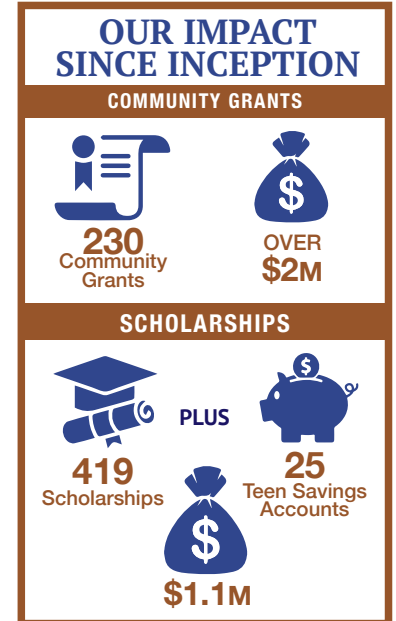
## Partnering with Santa Fe Community Foundation (SFCF)

Since its foundation, LCCF has operated on behalf of members as a component fund administered by the Santa Fe Community Foundation. SFCF is a well-established 501(c)3 supporting Santa Fe communities since 1981. Our partnership with them enables the LCCF board to focus on member engagement, community grants agency selection and follow up, and scholar support through the year while leveraging the strong connections and expertise of SFCF.

## Appreciation to Donors and Volunteers

On behalf of the nonprofit organizations receiving grants and our scholars, the LCCF board would like to thank donors for your enduring generosity. We also appreciate the many volunteers who give their time and expertise to make our community and fund-raising events successful.

As an all volunteer organization representing interests of members, the LCCF board is committed to expanding and growing our programs. We welcome feedback and ideas on how to make these programs even more impactful. Please reach out to John Wilcynski, LCCF President, phone: 703.622.1029, email: [info@lascampanascommunityfunds.org](mailto:info@lascampanascommunityfunds.org)



To learn more, go to:  
[lascampanascommunityfunds.org](http://lascampanascommunityfunds.org)

“

*We greatly appreciate our partnership with Las Campanas. There is so much need in our area, and LCCF's recognition of the role they play in supporting our community makes a significant difference.*

- Christopher Goett  
SFCF President and CEO

”

