

FIU  
GEN  
/ 2 3

FIU  
GEN  
/ 2 3

FIU  
GEN  
/ 2 3

FIU  
GEN  
/ 2 3

FIU  
GEN  
/ 2 3

FIU  
GEN  
/ 2 3

FIU  
GEN  
/ 2 3

FIU  
GEN  
/ 2 3

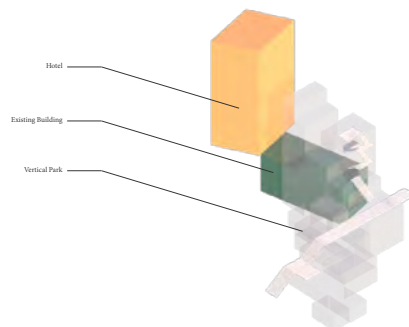
FIU  
GEN  
/ 2 3

# ANYELA DE LAS TRAVIESAS + CHELSEA GUTIERREZ / D09

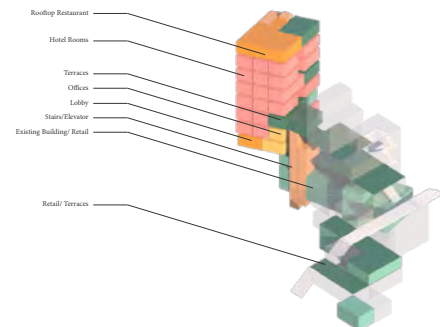
- A Genoa Site Map
- B Massing Diagram
- C Programming Diagram
- D Hotel Balcony Detail
- E Shading Strategies - Hotel
- F Mullion-less Glass Detail
- G Shading Strategies - Vertical Park
- H Wind Analysis
- I Wind Response
- J Piazza Level Plan
- K Hotel Second Floor Plan
- L Mezzanine Level Floor Plan
- M Hotel Room Floor Plan
- N Upper Level Entrance Plan
- O Rooftop Level Plan
- P Longitudinal Section
- Q Cross Section
- R Isometric View of Full Project
- S Rendered Vertical Park Detail
- T Rendered Views



A



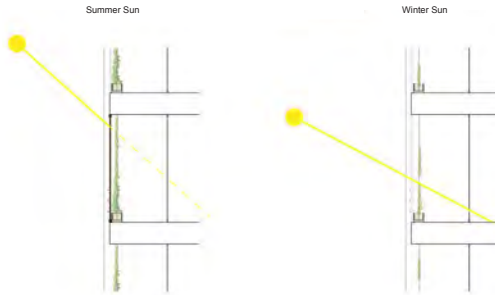
B



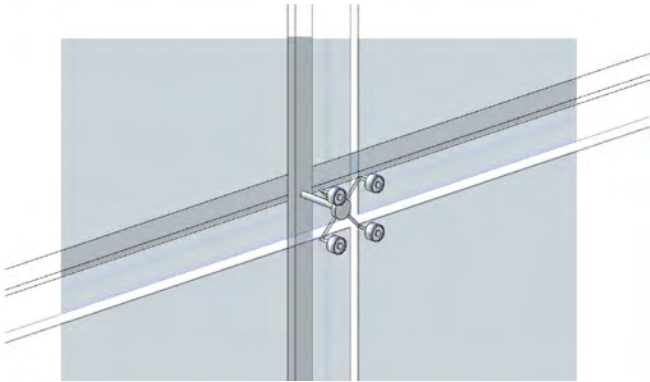
C



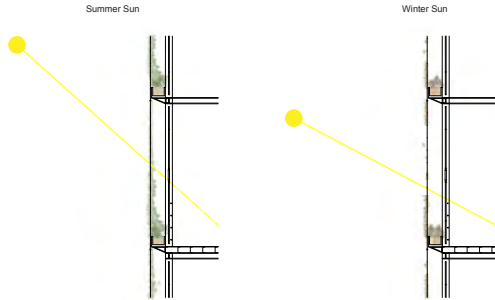
D



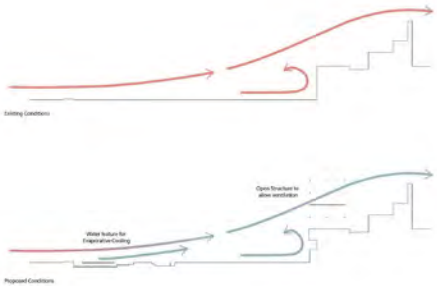
E



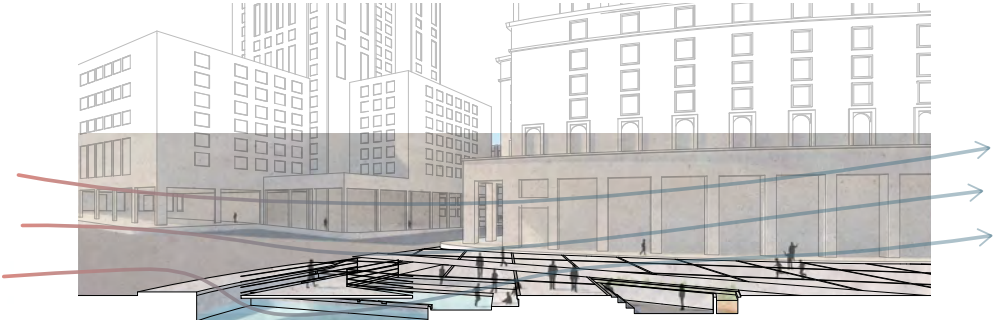
F



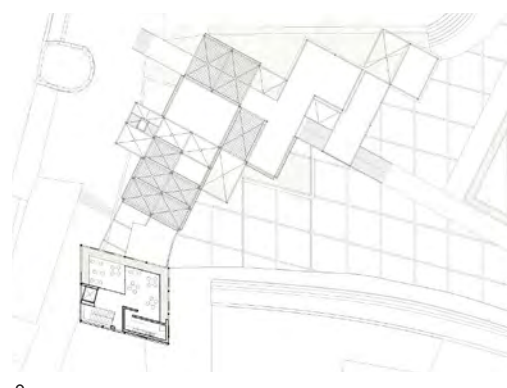
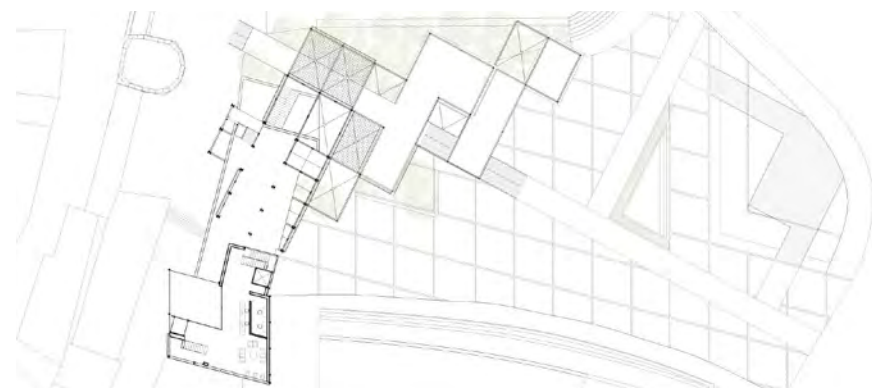
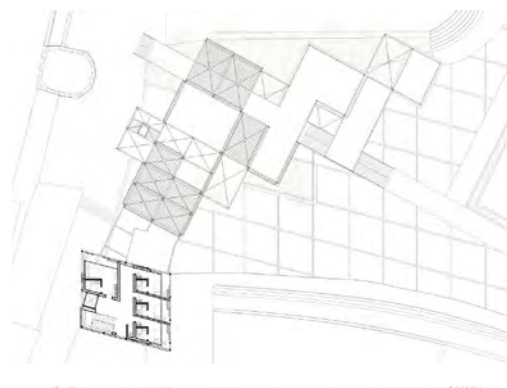
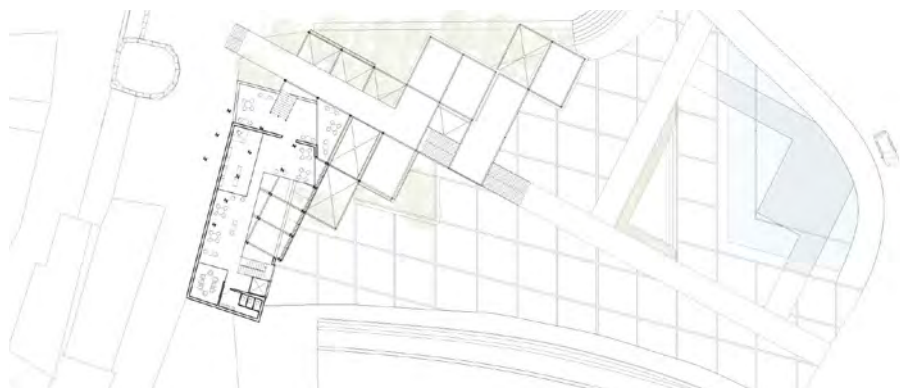
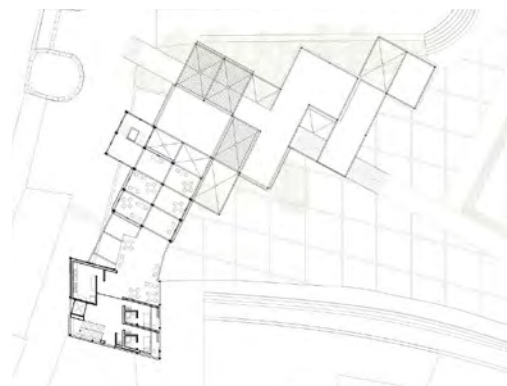
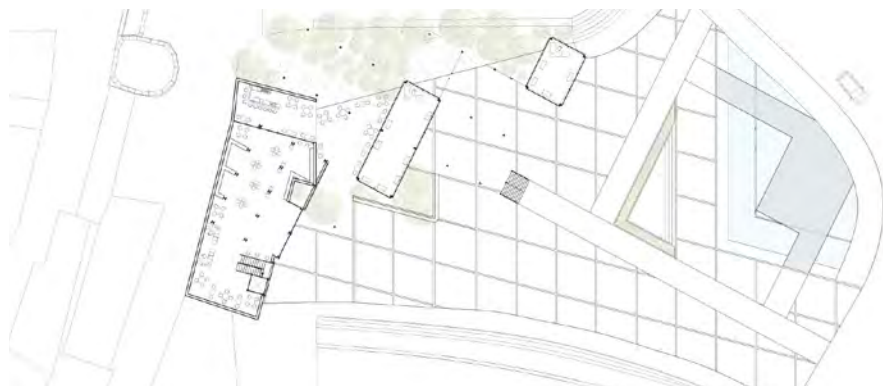
G



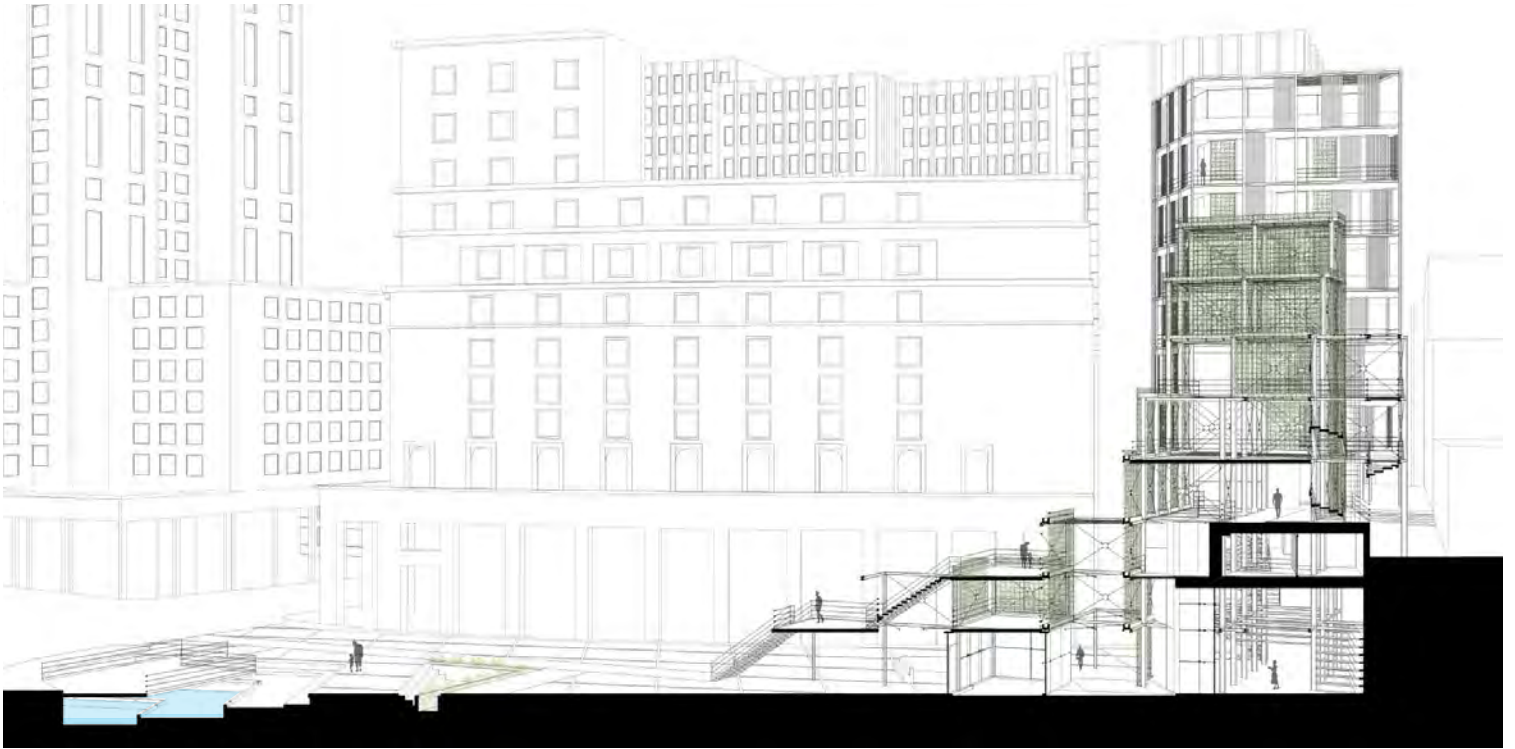
H



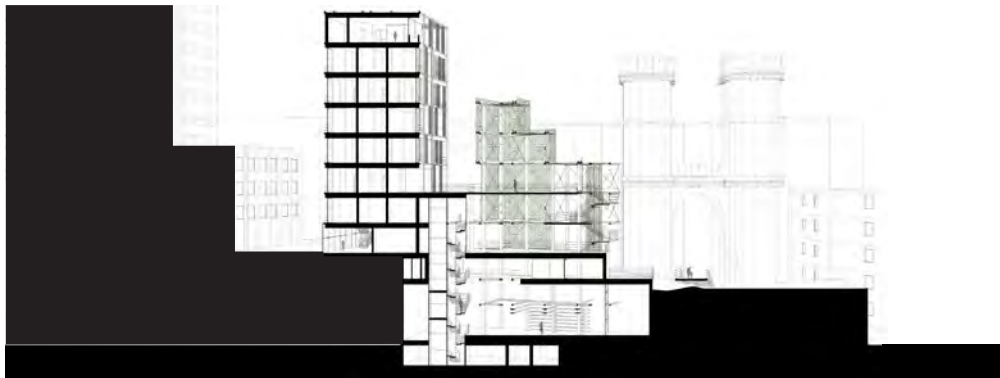
I



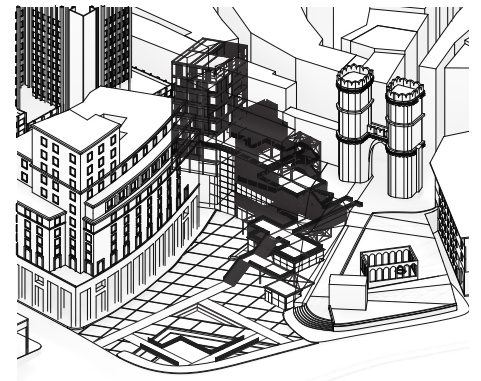




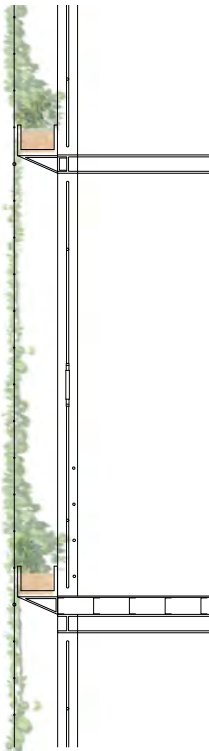
P



Q



R

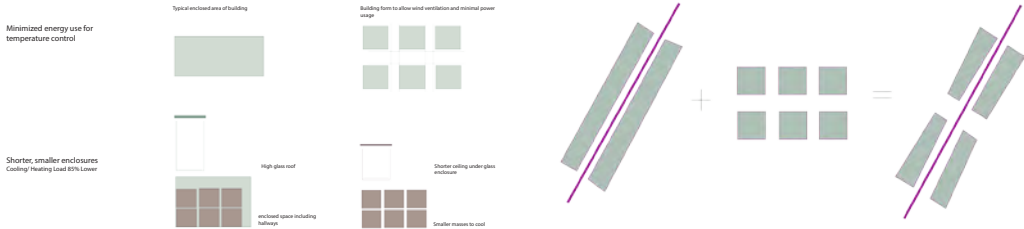






# OLIVIA BECK + SIENNA LEWIS / D09

- A Energy Usage
- B Form Evolution
- C Program
- D Structural Grid
- E Solar Site Analysis
- F Render View
- G Massing
- H Plans
- I Site Plan
- J Site Section
- K Longitudinal Section
- L Render View
- M Render View
- N Temperature Analysis - Open Shell - Summer Solstice
- O Temperature Analysis - Closed Shell - Winter Solstice
- P Energy Management Strategies
- Q Energy Management Detail
- R Solar Response - Light Corridor
- S Render View
- T Solar Response - Facade



A

B

**Public Spaces:**  
Lobby, guest services, waiting area, executive center

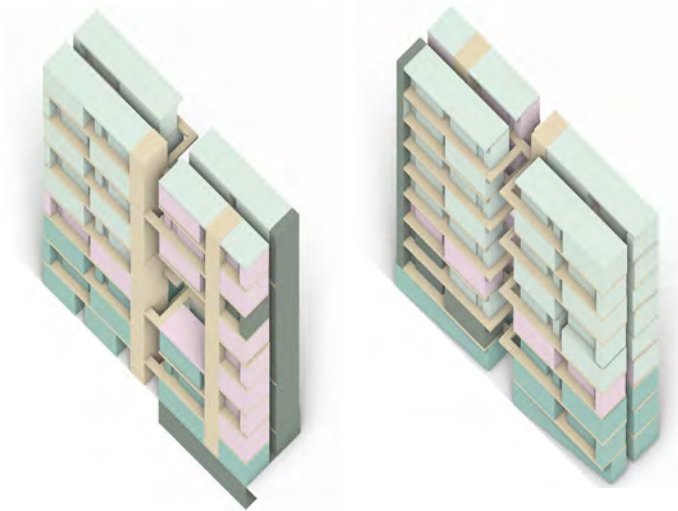
**Hotel Rooms**

**Public Spaces Lower Levels:**  
Restaurants, cafes, retail

**Circulation**

**Back of House:**  
Management offices, laundry, janitorial, luggage storage room

Underground deliveries and garbage removal, service rooms

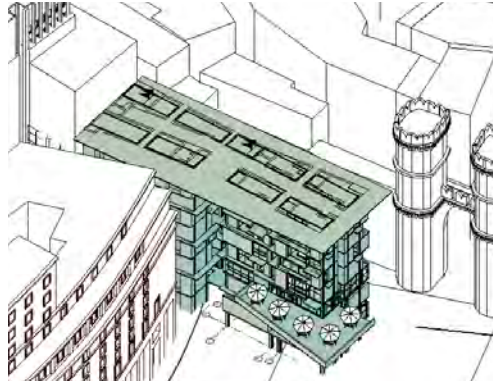


C





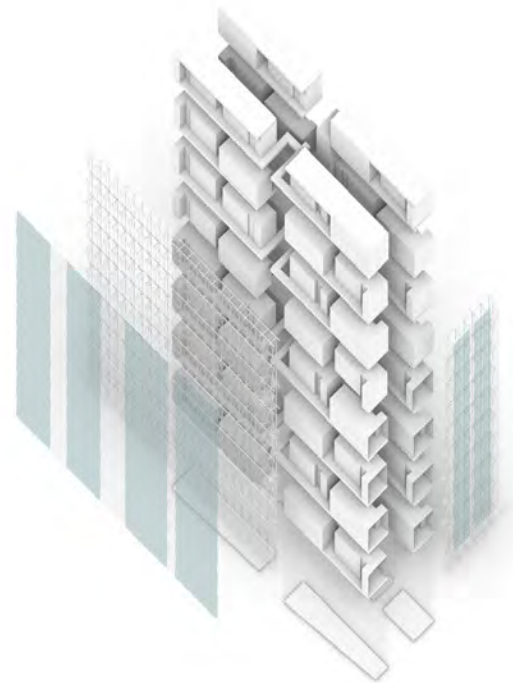
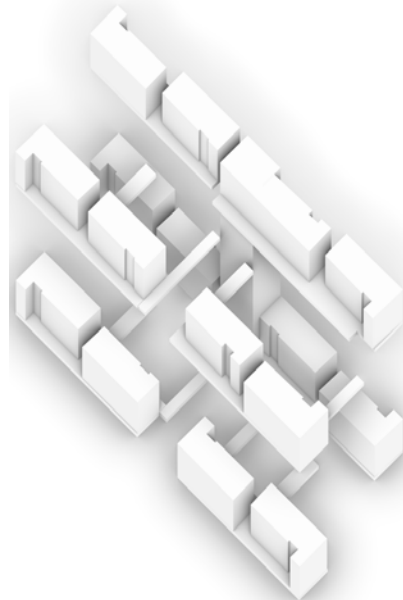
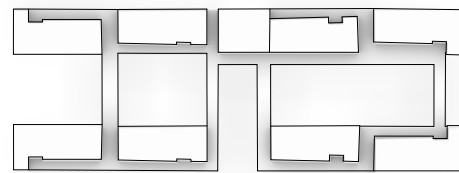
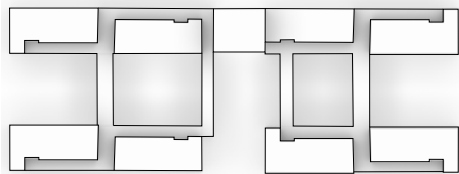
D



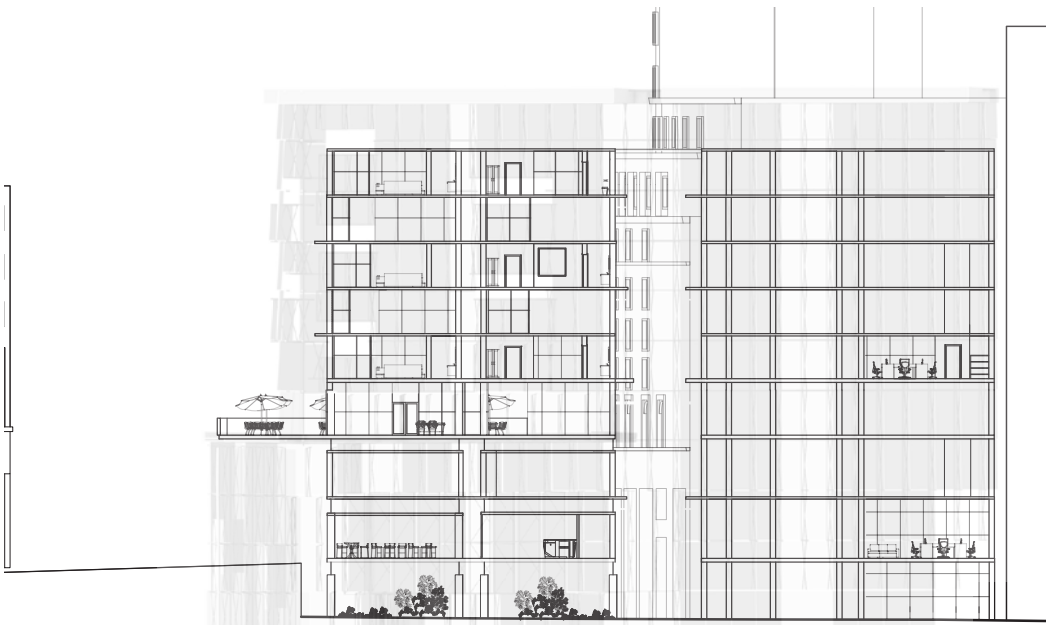
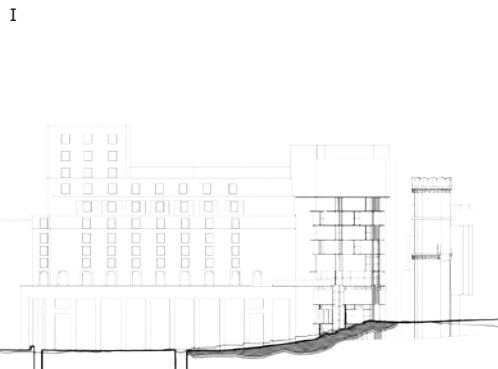
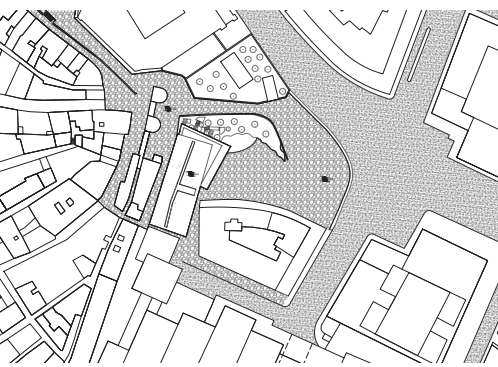
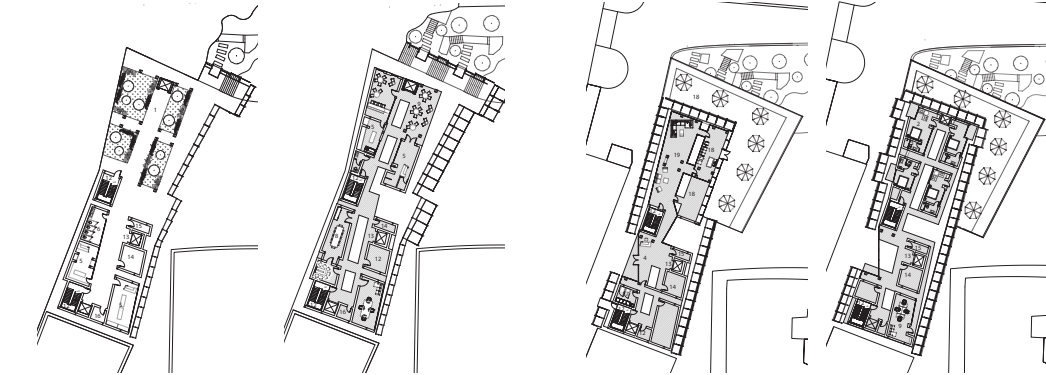
E



F



- 1 - Interior Garden
- 2 - Bedroom
- 3 - Private Bathroom
- 4 - Lobby
- 5 - Retail Spaces
- 6 - Public Restrooms
- 7 - Kitchen
- 8 - Conference room
- 9 - Study/ Work Lounge
- 10 - Management
- 11 - Presentation room
- 12 - Emergency Stairs
- 13 - Elevator
- 14 - Storage
- 15 - Mechanical Room
- 16 - Janitorial
- 17 - Dining
- 18 - Lounge Spaces



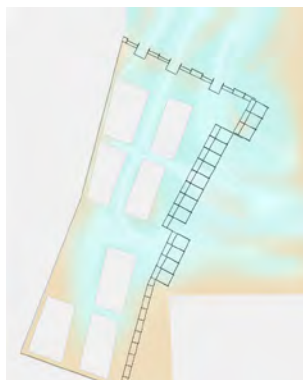






Average temperature inside shell  
73F or 22.78C

Average temperature outside  
shell 80.6F or 27C



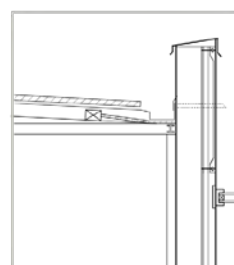
N

Average temperature inside shell  
78 degrees Fahrenheit

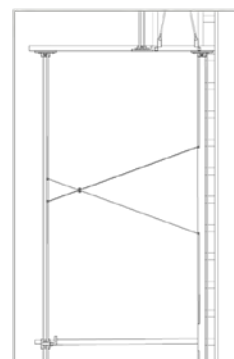
Average temperature outside  
shell 48 degrees Fahrenheit



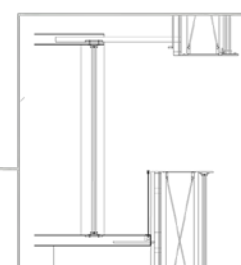
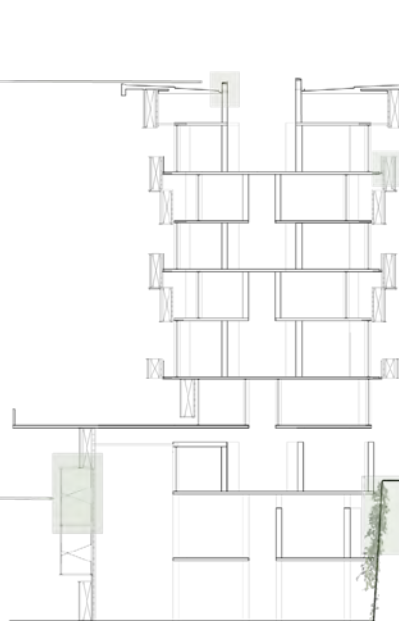
O



Water collection on roof



Operable shell to allow for  
ventilation



Shell opens to allow for  
balconies



Green wall at base of project

P

M





Q



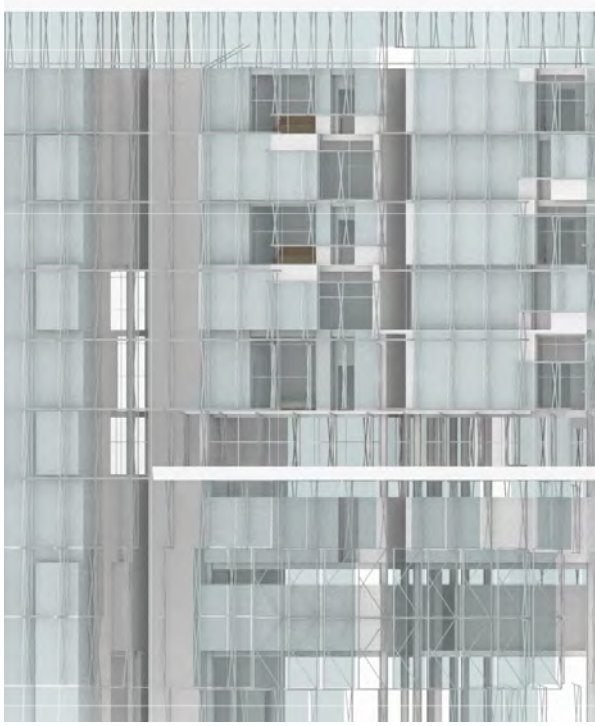
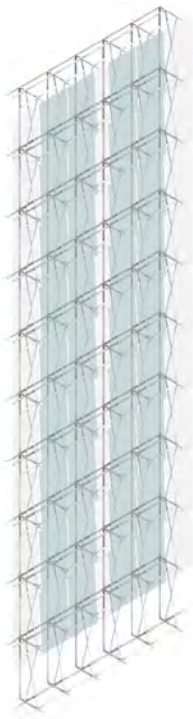
R



S

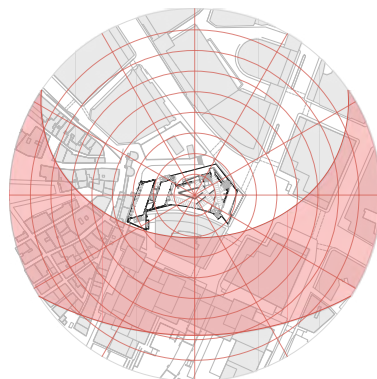


T

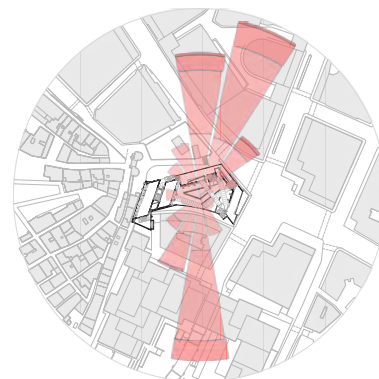


# CARLOS MALMIERCA + MINERVA CHEUNG / D09

- A Sun Analysis
- B Wind Analysis
- C Site Analysis
- D Site Topography Current & Proposal
- E Site Plan
- F Structure Framework
- G Operable Shading Louvers
- H Floor Plan - Level -3
- I Floor Plan - Level 0
- J Floor Plan - Level 5
- K Floor Plan - Level 4
- L Floor Plan - Level 3
- M Floor Plan - Level 7-8
- N Floor Plan - Level -1
- O Floor Plan - Level -2
- P Render View
- Q North Facing - Section Perspective
- R Vertical Circulation Diagram
- S East Facing - Section Perspective
- T Rendered Views



A



B



**VERTICAL CIRCULATION**  
Through Ground Movement



**WATER COOLING**  
Exterior Temperature Moderator

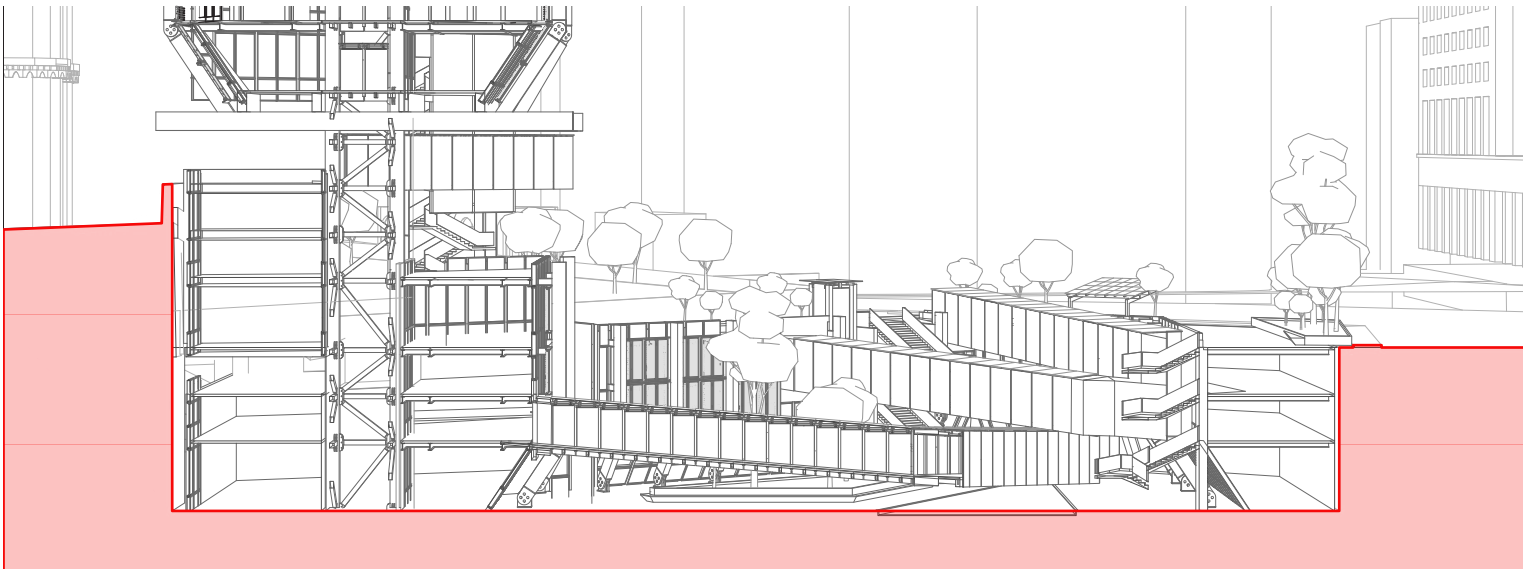
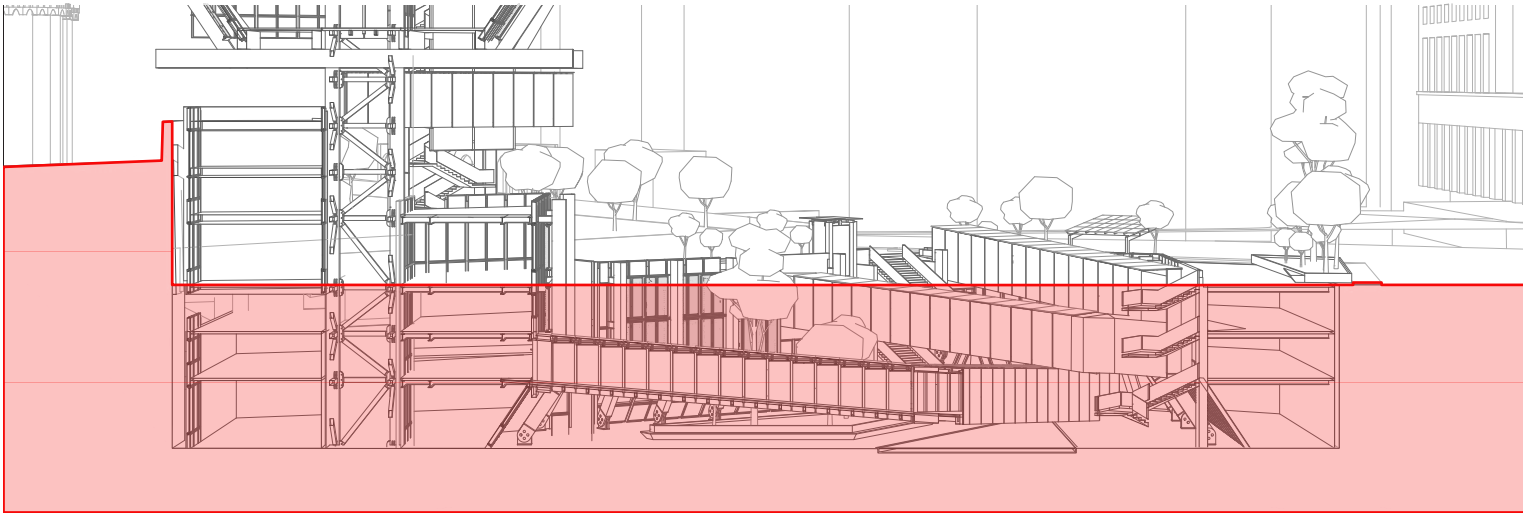


**GROUND CARVING**  
Integrated Green Space

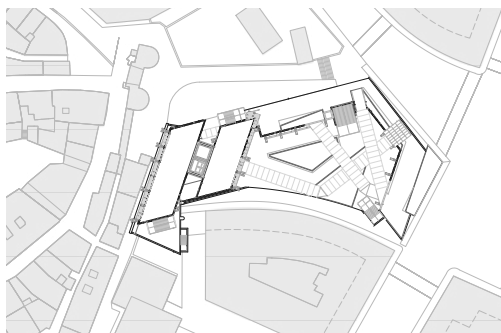


**GENOA**  
Medieval Core and Vicinities

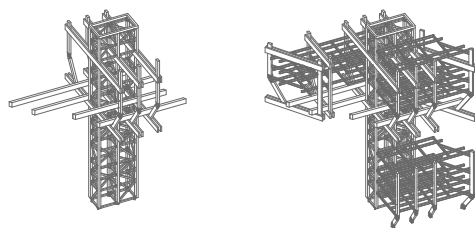
C



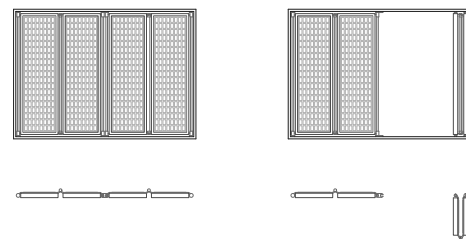




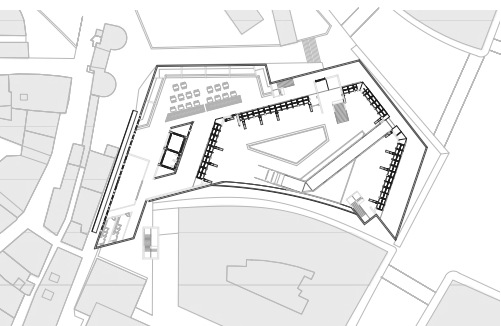
E



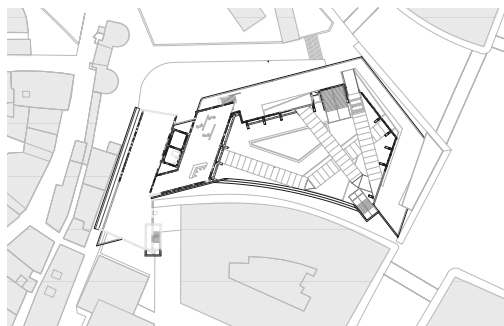
F



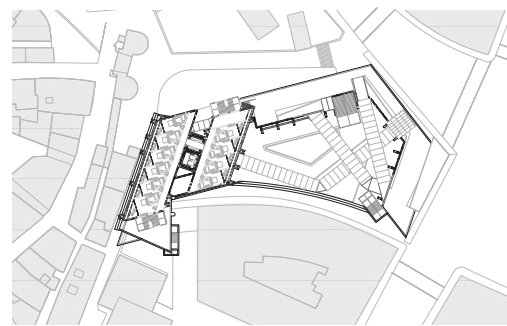
G



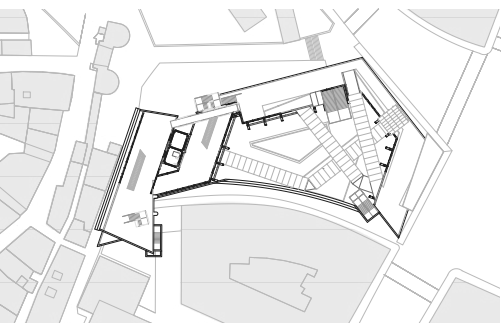
H



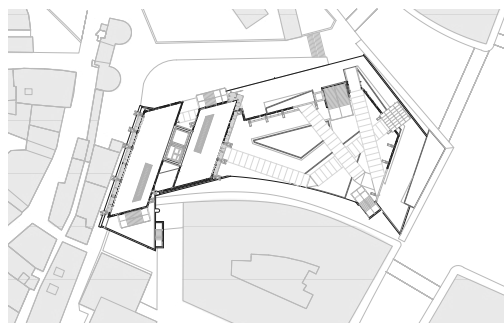
I



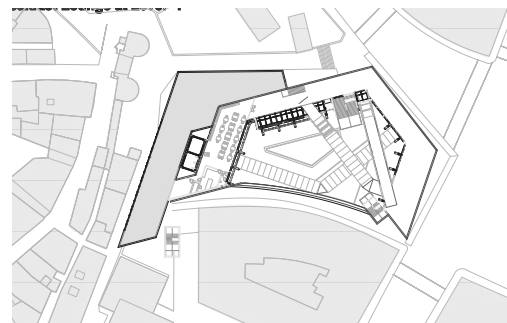
J



L

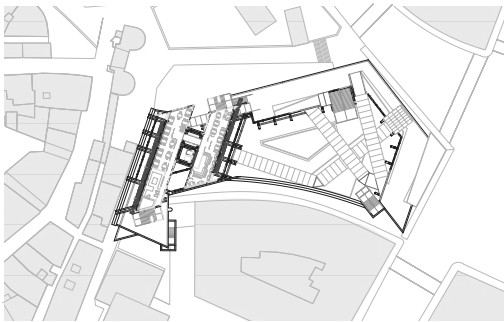
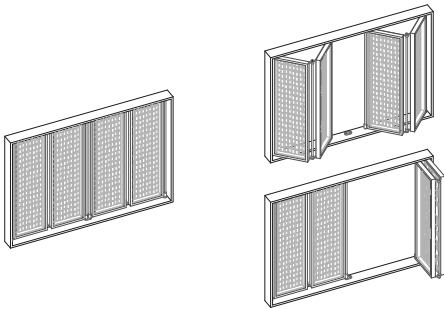


M

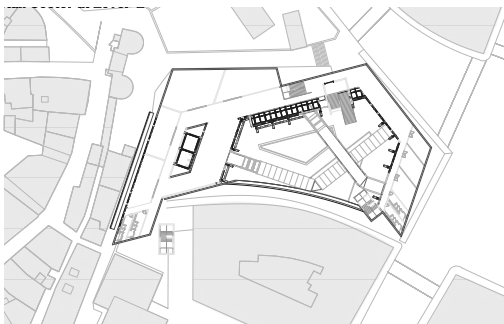


N





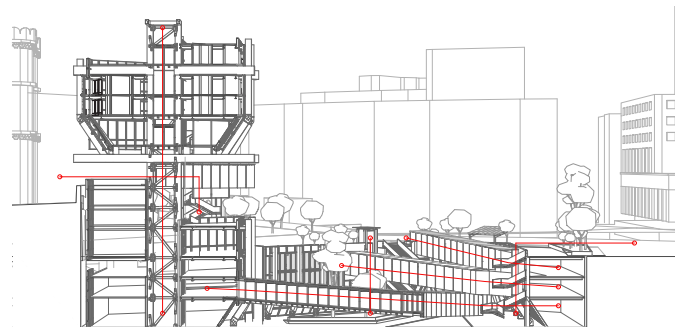
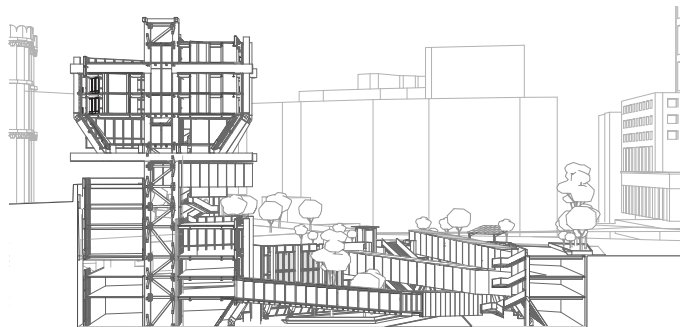
K



O

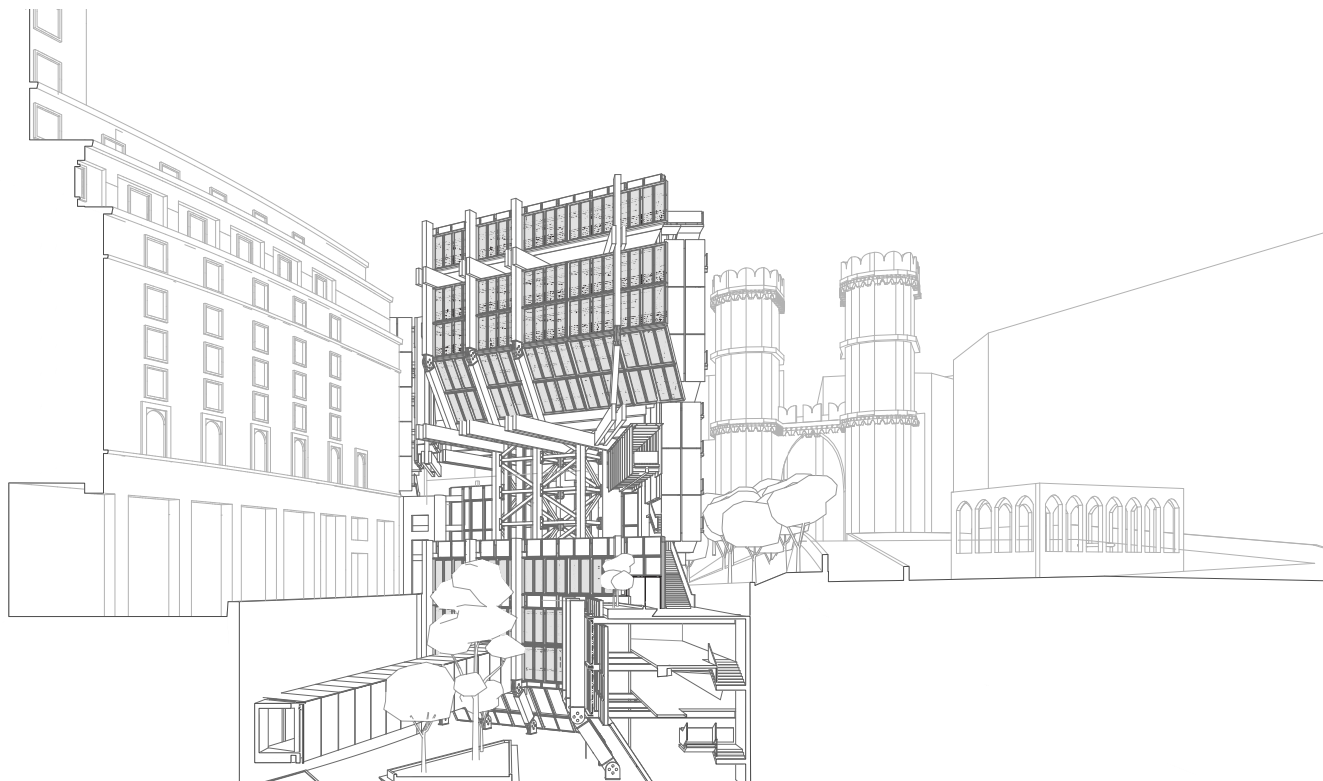


P



Q

R



S





# BRYAN ALFONSO + SHANNON BISHOP / D09

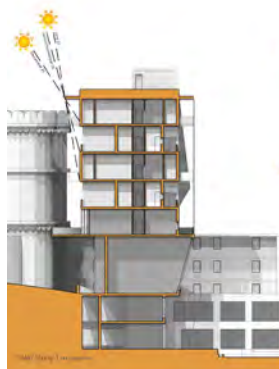
- A Solar Study - 9 am
- B Summer Wind Condition
- C Solar Study - 1 pm
- D Winter Wind Condition
- E Solar Study - 5 pm
- F Site Scheme and Existing Circulation
- G Wind Analysis and Response
- H Floor Plan Level 1 - Programming
- I Floor Plan Level 4 & 5 - Programming
- J Floor Plan Level 2 - Programming
- K Floor Plan Level 6 & 9 - Programming
- L Floor Plan Level 3 - Programming
- M Hotel Room Detail
- N Project Overview
- O Interior Render
- P Longitudinal Section A
- Q Longitudinal Section B
- R Cross Section C
- S Rendered View



A



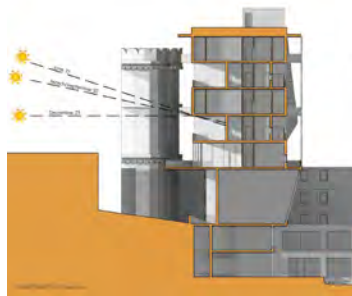
B



C



D

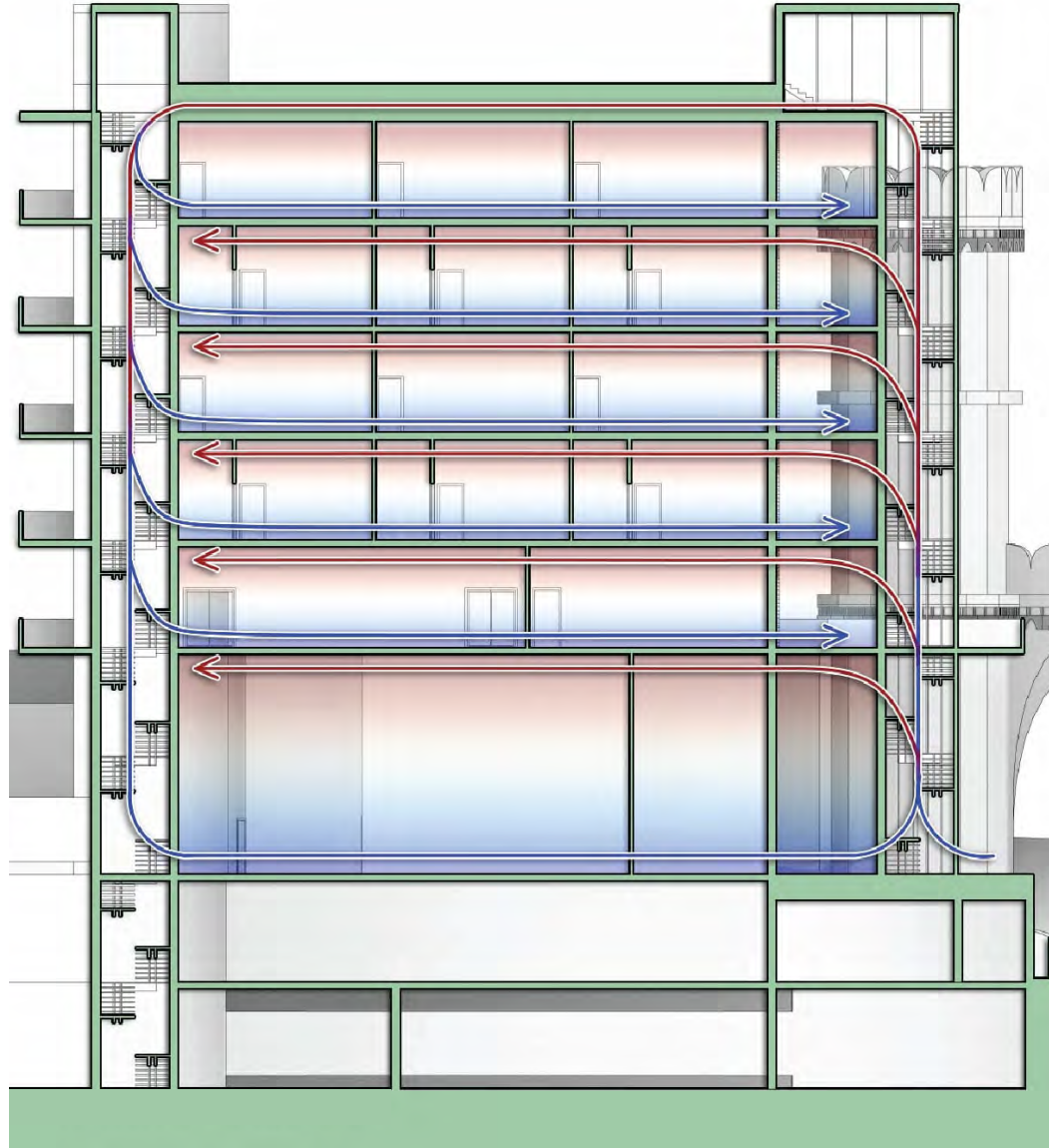


E



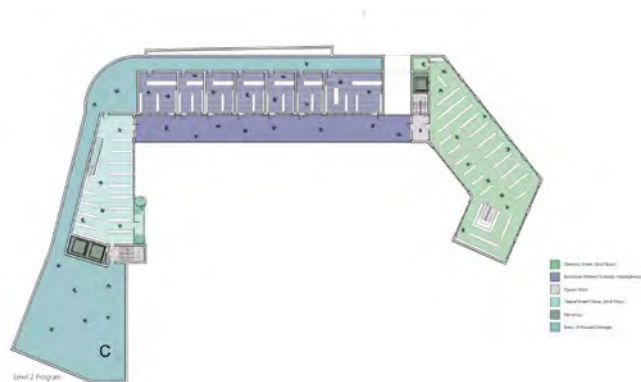
F



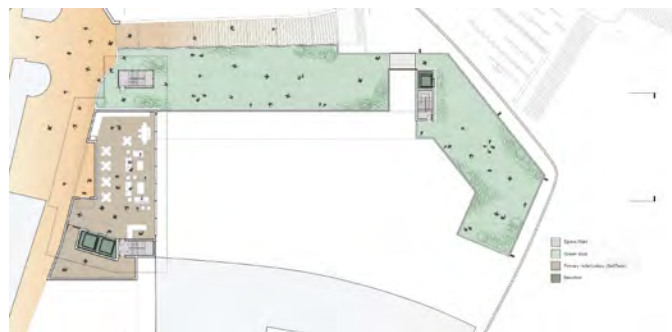




H



J



L



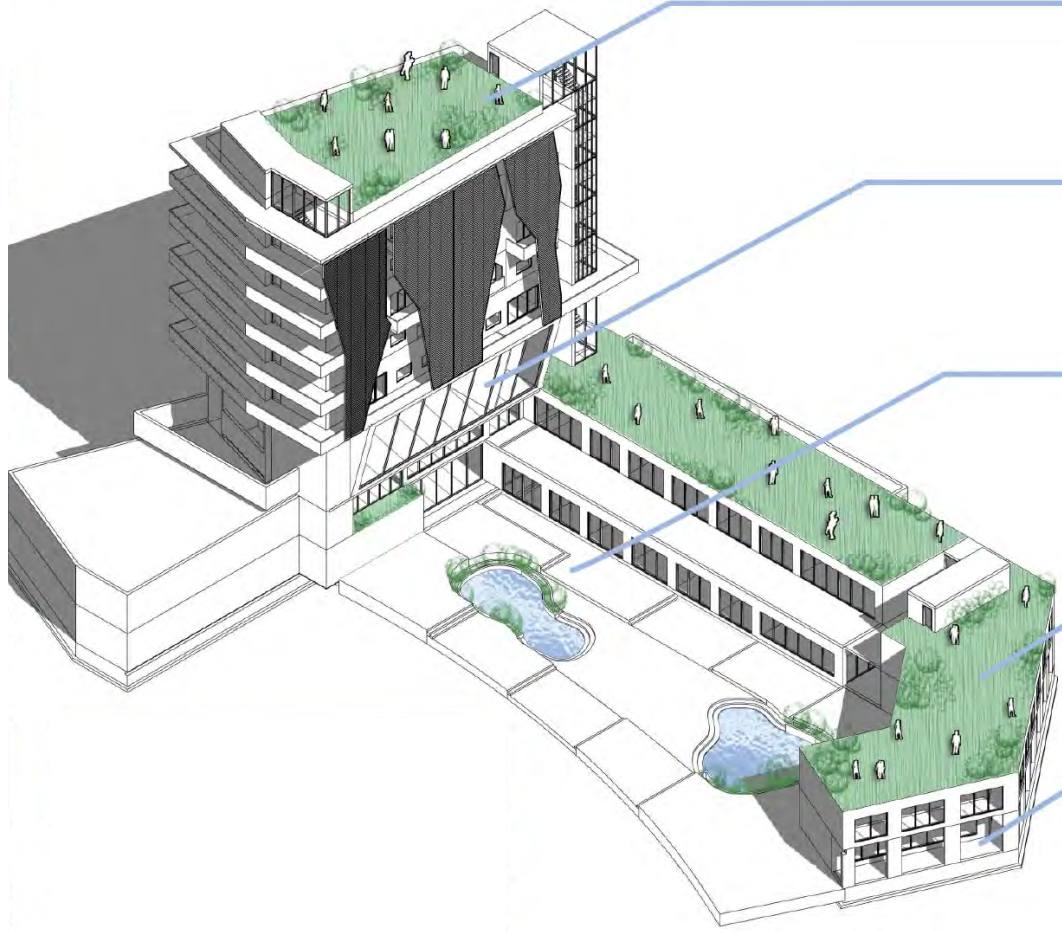
I



K



M



### **Rooftop Garden**

Accessible only to hotel guest, with great view of both the historic and newer parts of the city.

### **Hotel Lobby**

Accessible through the 3rd level, this location provides a stunning view over the new piazza, while also allowing direct access through the elevators that take you to the lower lobby on the 1st level .

### **Piazza Dante**

The new and improved piazza forgoes the messy, claustrophobic motor vehicle parking, for a new popular spot to eat, shop, and hang out with friends and family. There is an exterior foodcourt like Il Mercato Centrale (located in milan) on the lower floor. Boutique shopping stores on the second floor.

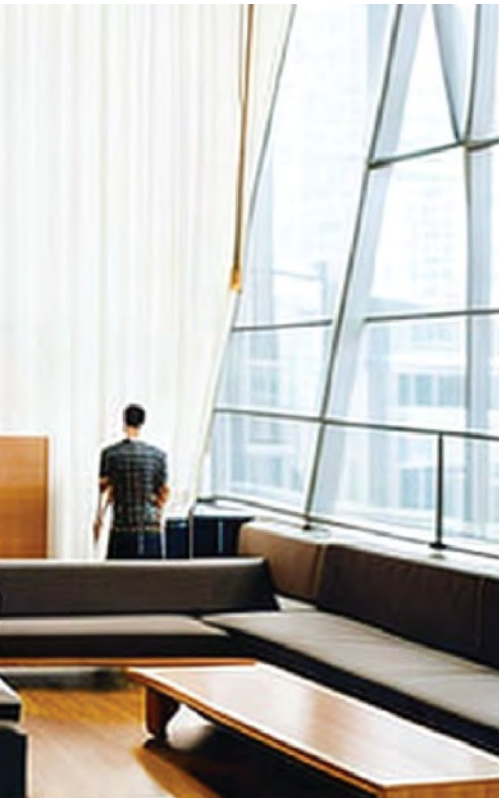
### **Public Park**

Accessible to anyone, located on the 3rd level of the project, this space serves as a small area to have a leisure walk or meet-up space with friends and family.

### **Generic Store**

Consisting of two floors this store provides nearby residents quick access to almost anything they might need. The store also contains a stair and elevator that connect the piazza to the Park





0



P



Q



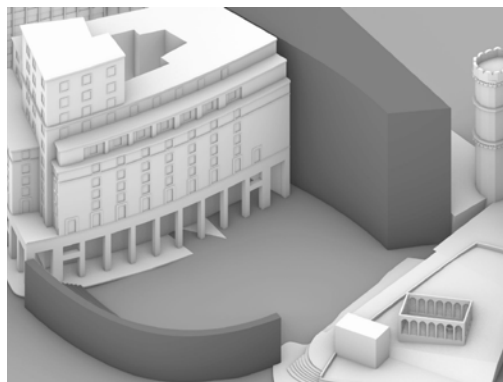
R



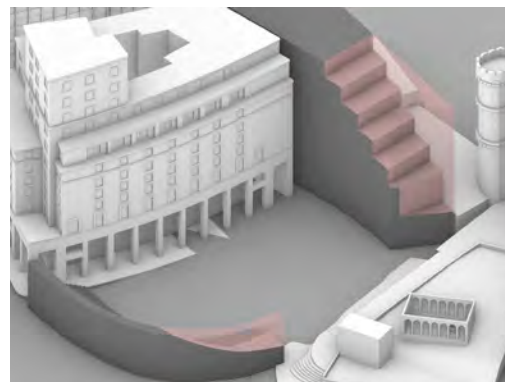
S

# PETER DRAVGALIS + SEBASTIAN PLASENCIA / D09

- A Massing
- B Massing
- C Public vs. Private Diagram
- D Programming Diagram
- E Green Areas Diagram
- F Full Project Aerial View
- G Circulation Diagram
- H Section Detail
- I Section Perspective
- J Site Plan
- K Floor Plan Level 1
- L Floor Plan Level 3
- M Longitudinal Section
- N Cross-Section
- O Cross-Section
- P Rendered Views



A



B



C



D



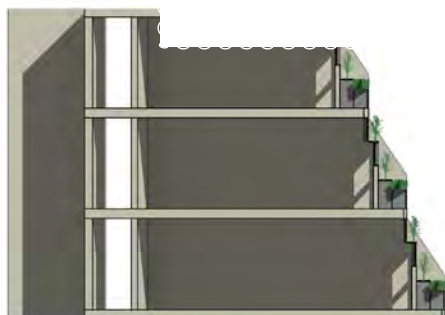
E



F



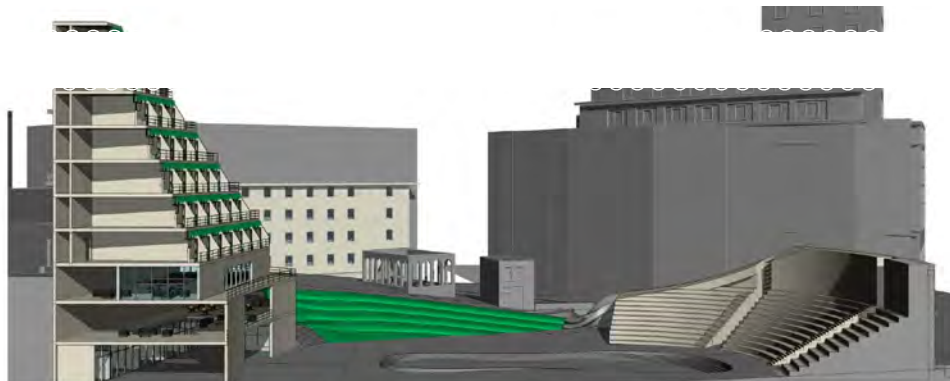




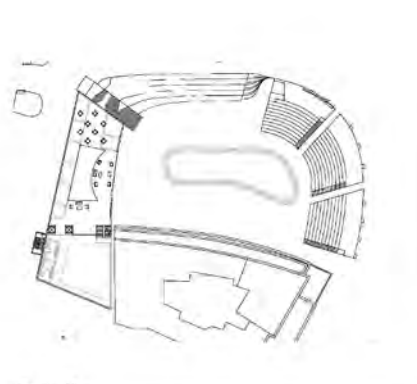
H



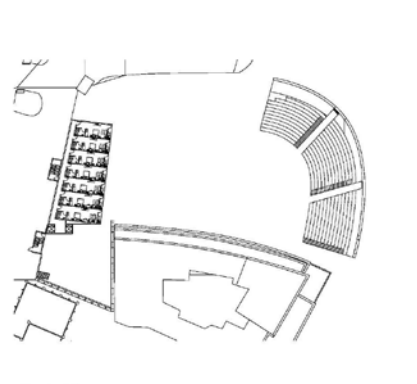
J



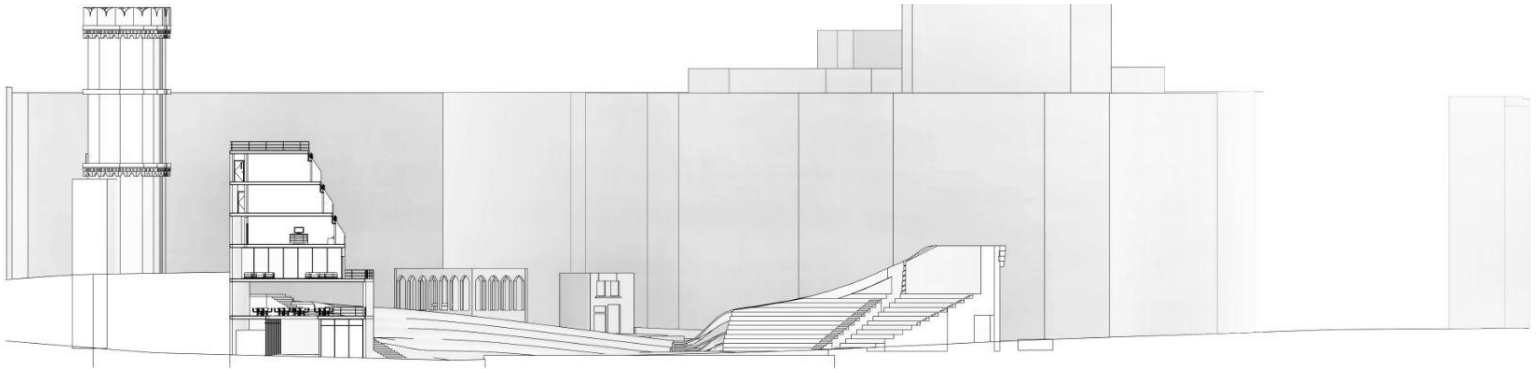
I



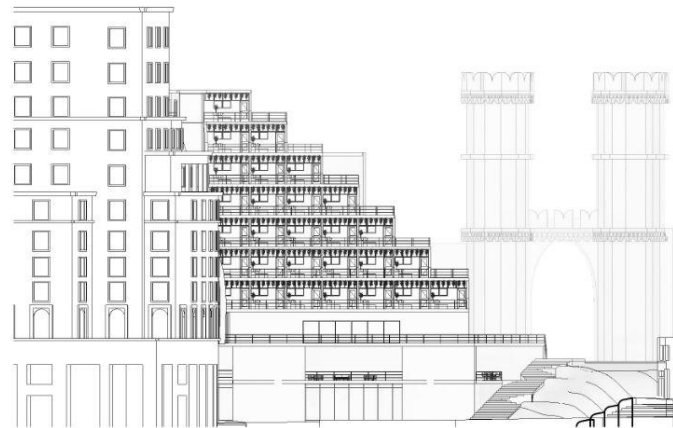
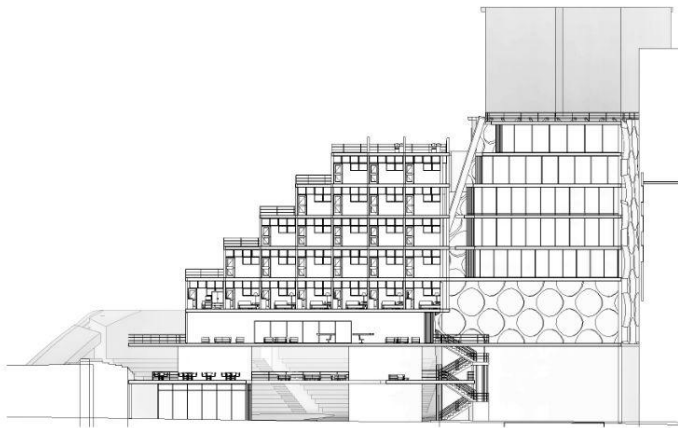
K



L



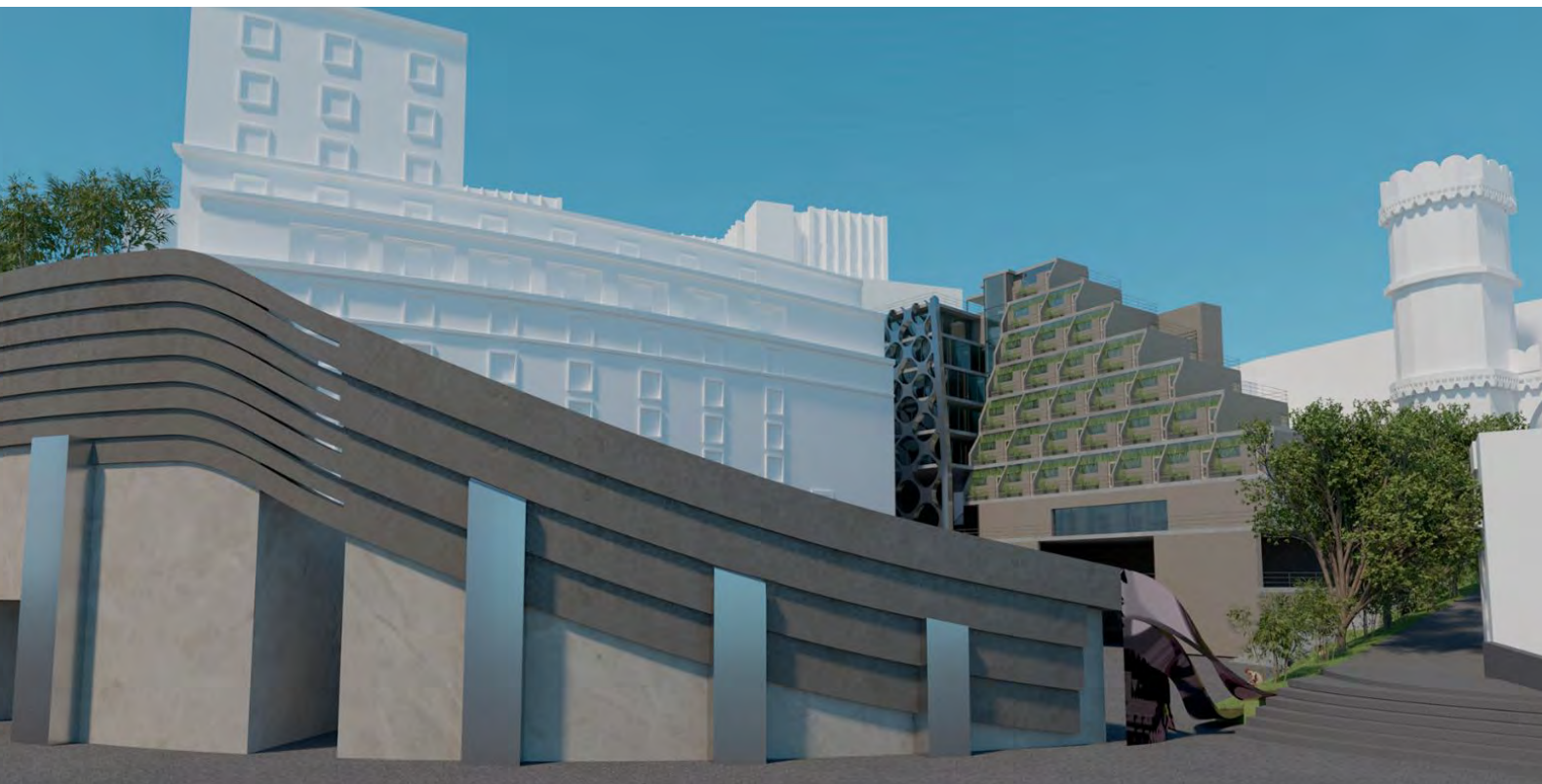
M



N

O

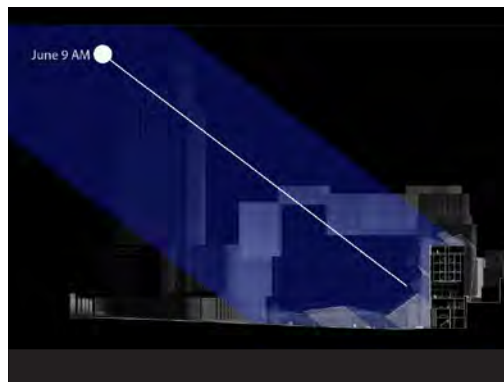




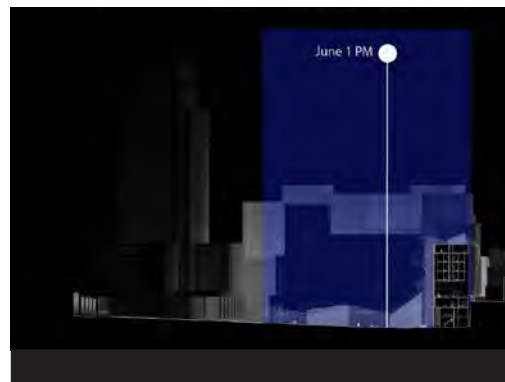


# DANIELA BENGURIA + DANIEL GONZALEZ / D09

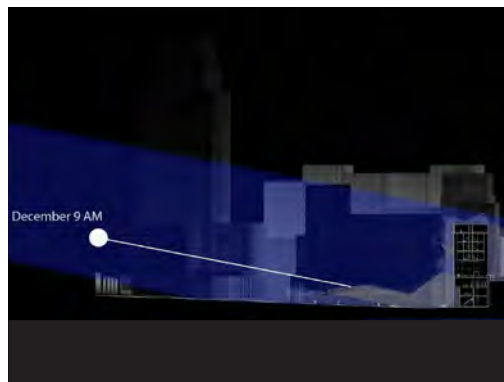
- A Summer Solar Study
- B Heat Transfer Study
- C Winter Solar Study
- D Precipitation Study
- E Wind Study- Summer & Winter
- F Massing
- G Programming Diagram
- H Site Plan
- I Ground Floor Plan
- J Floor Plan Level 3 & 4
- K Second Floor Plan
- L Floor Plan Level 7 & 9
- M Site Section
- N Cross Sections
- O Facade Concept Sketch
- P Rendered Views



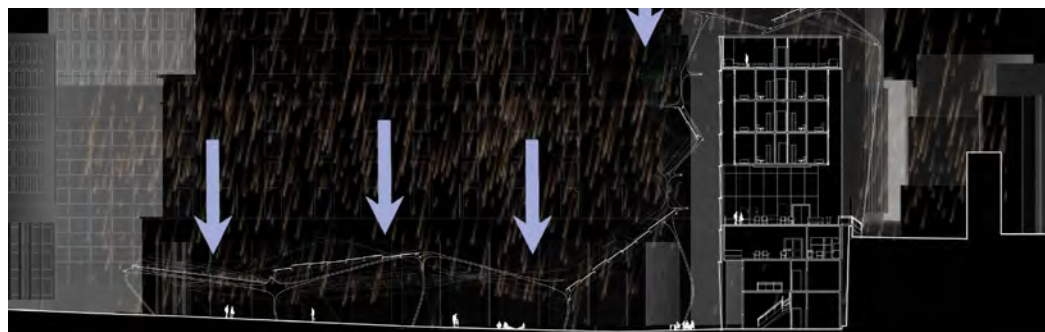
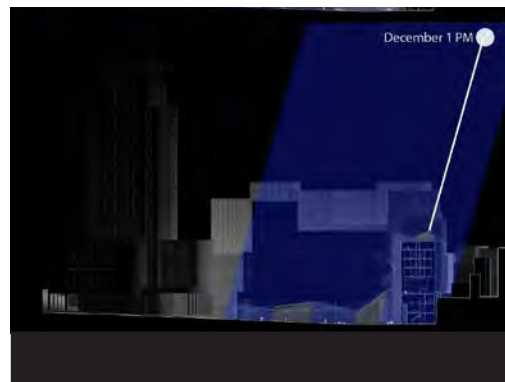
A



B

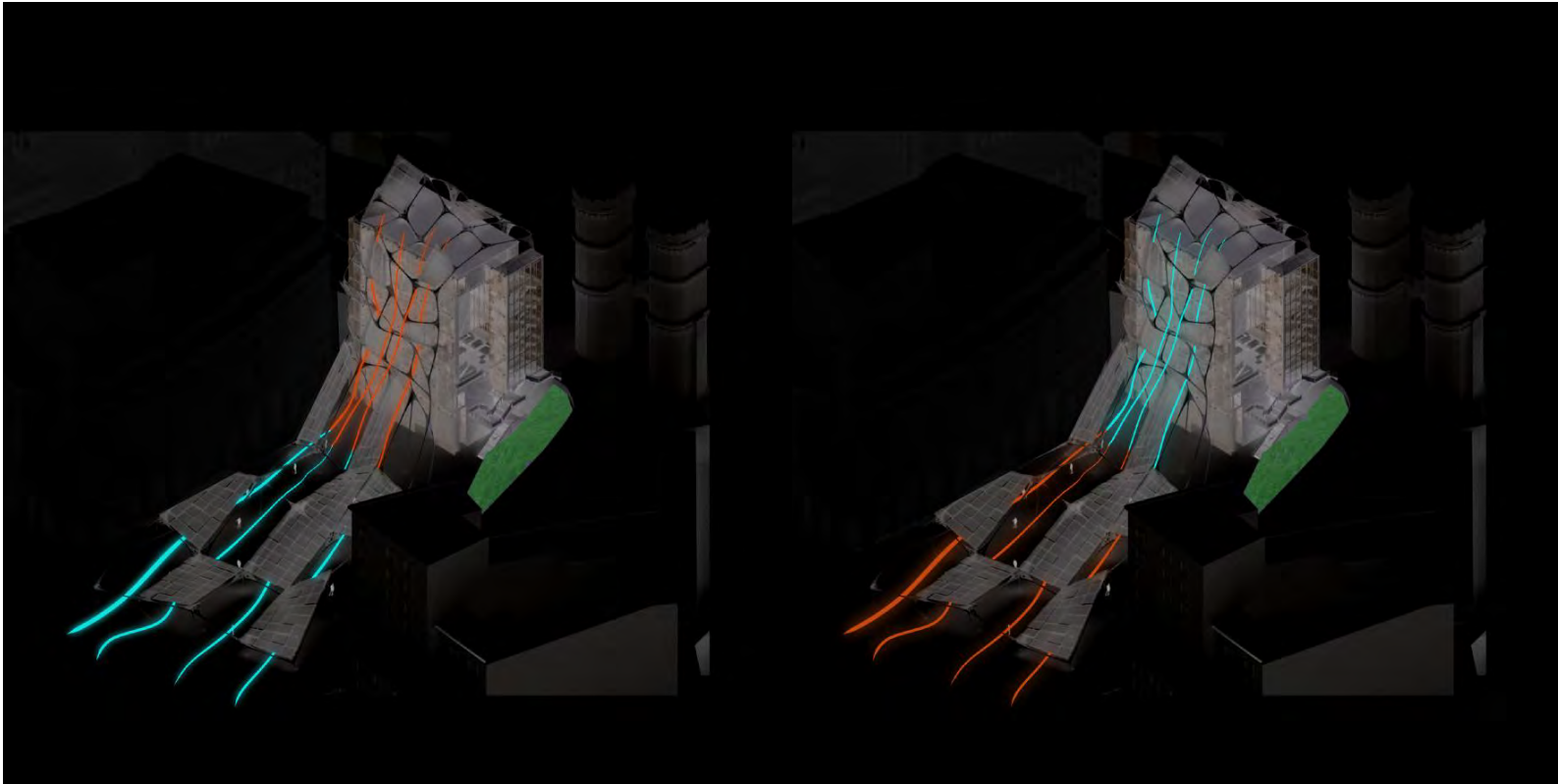


C

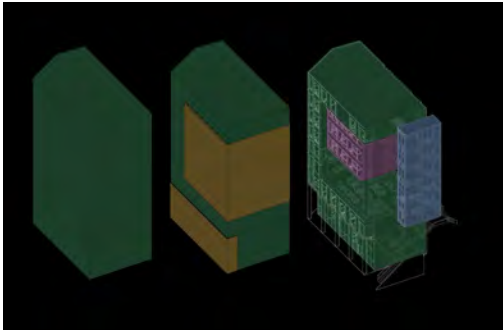


D

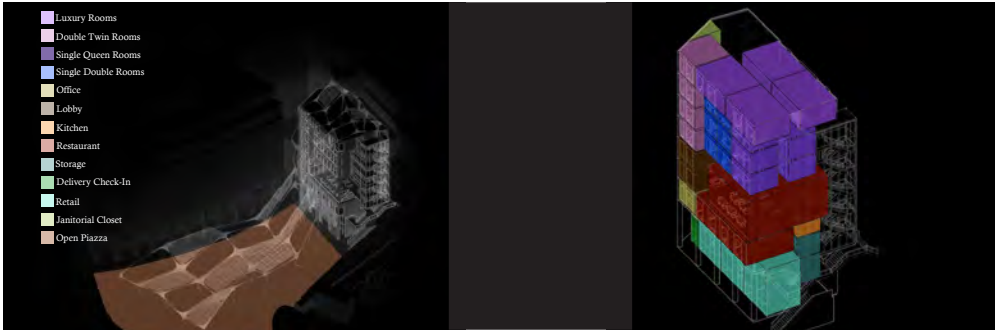




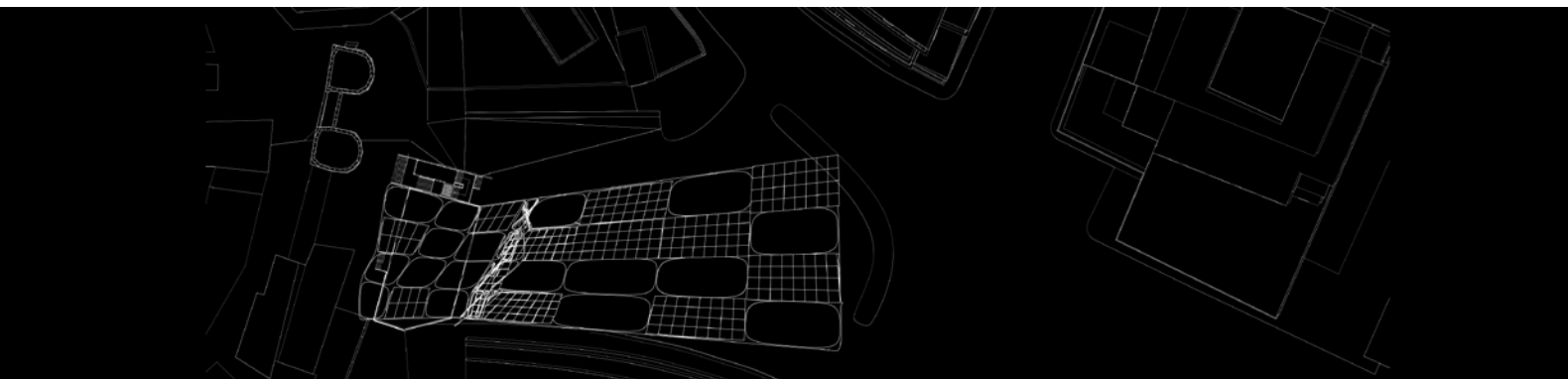
E



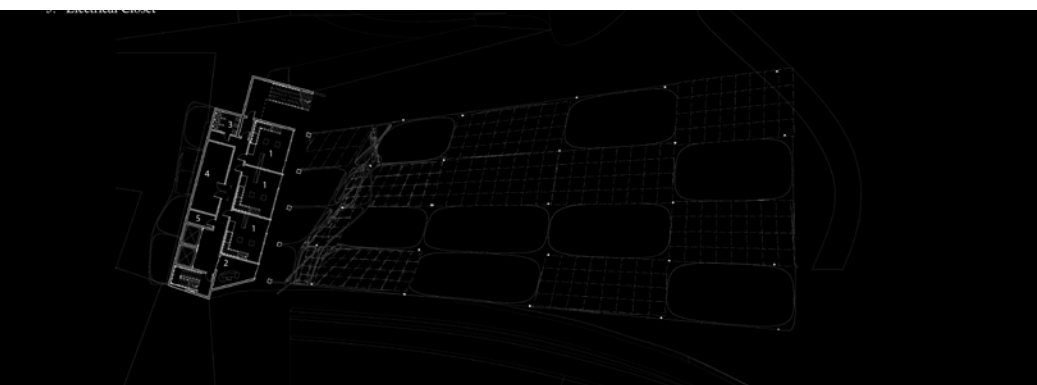
F



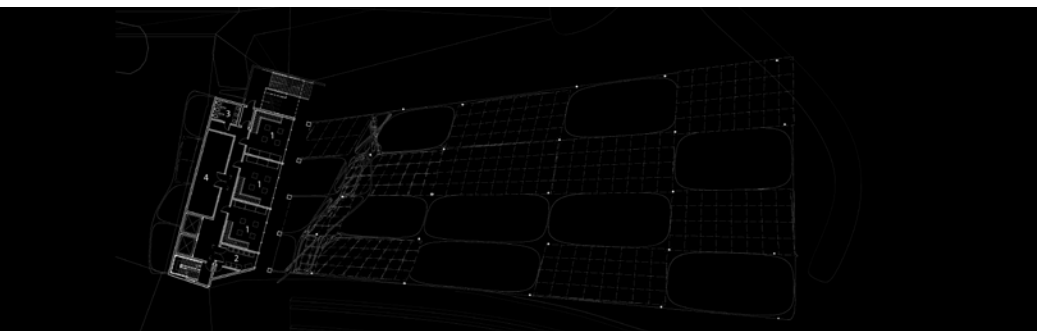
G



H



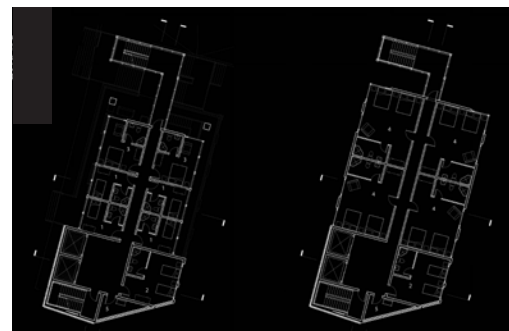
I



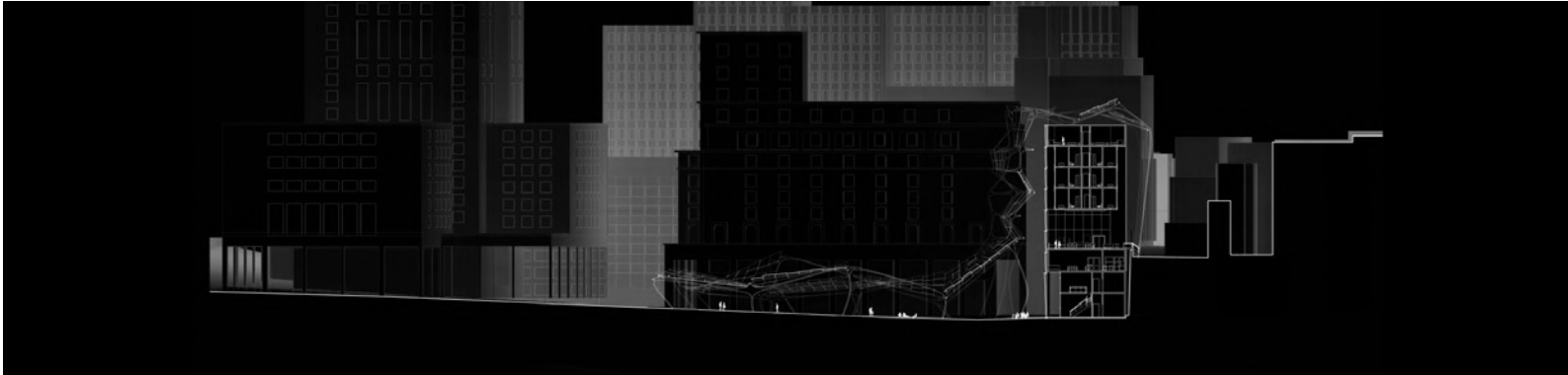
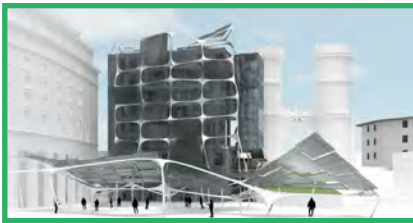
K



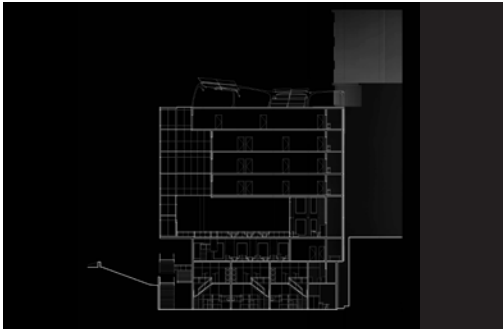
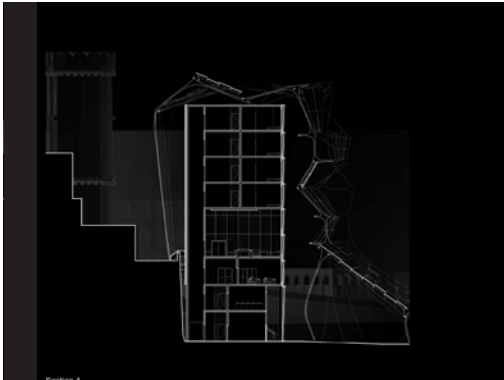
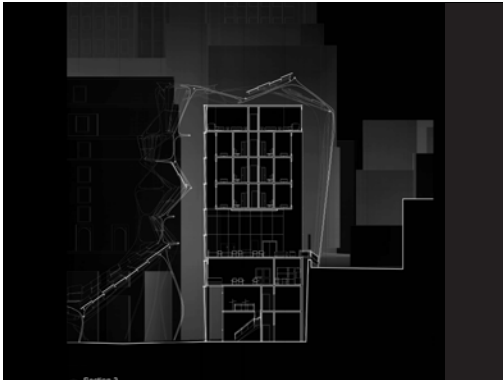
J



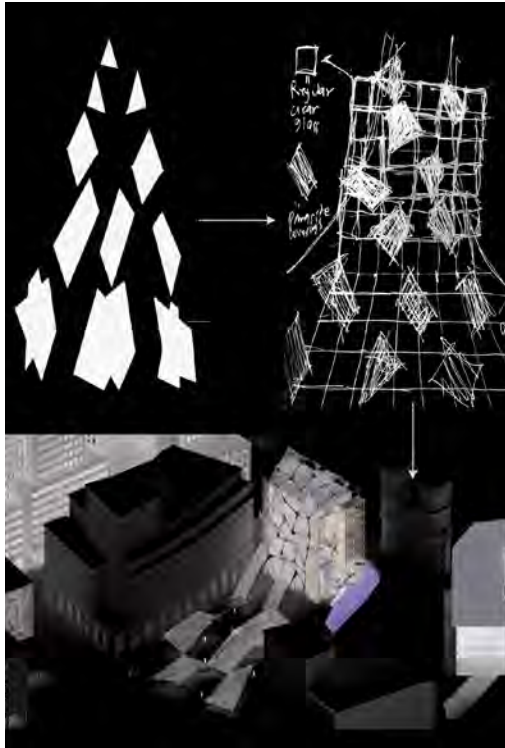
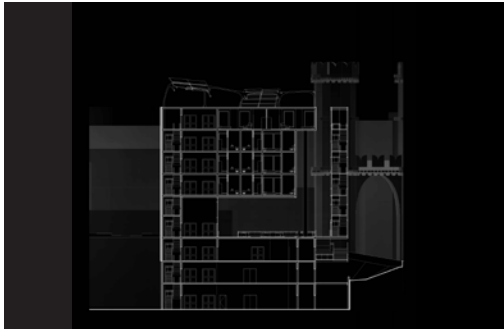
L



M

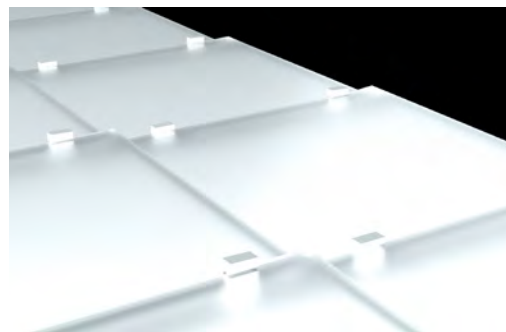
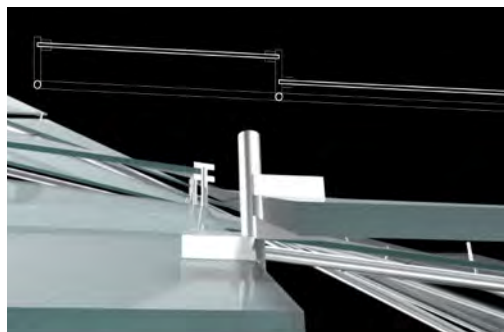
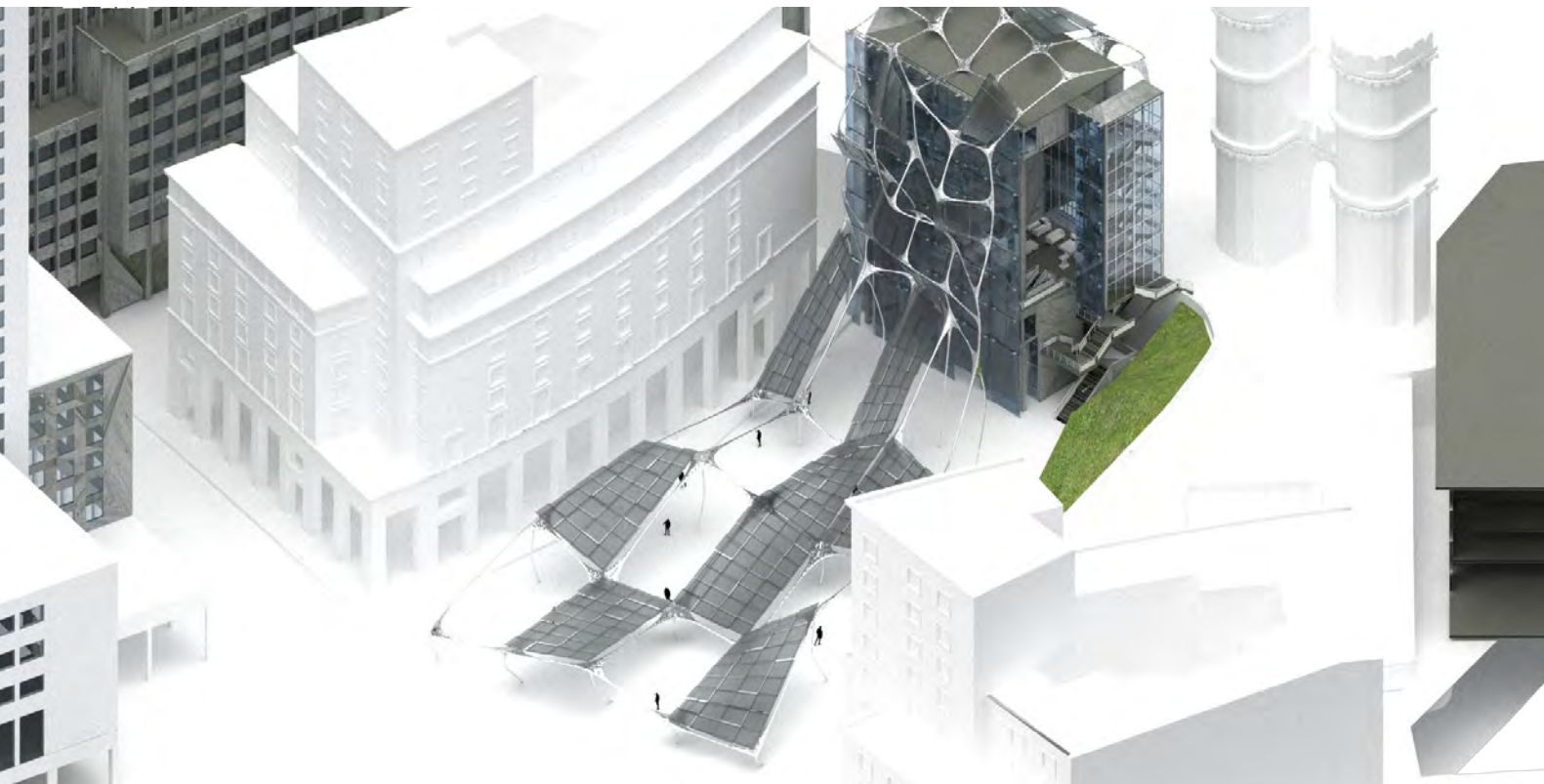


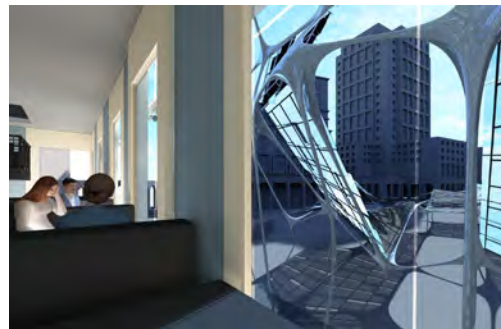
N



O

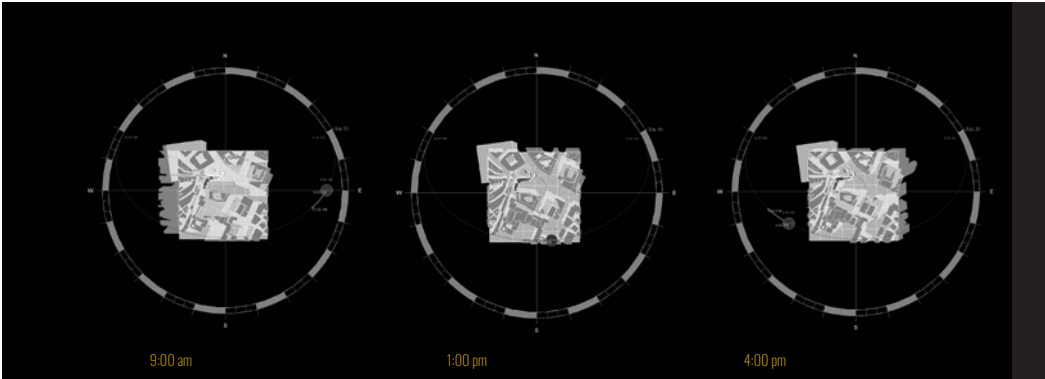




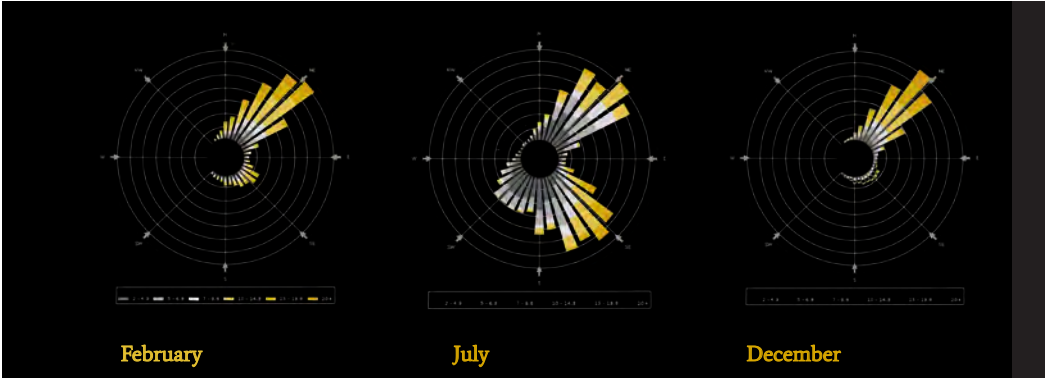


# ANA CRISTINA OLIVARES + SEBASTIAN CALDAS / D09

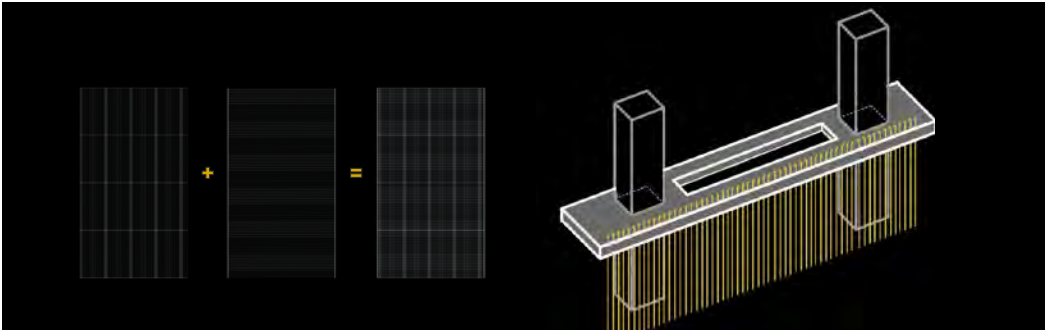
- A Solar Study - July
- B Wind Analysis
- C Tension Cord Facade Detail
- D Concept Development
- E Programming Diagram
- F Floor Plan Level 2
- G Longitudinal Section
- H Floor Plan Level 4
- I Longitudinal Section
- J Floor Plan Level 6
- K Piazza Design
- L Rendered Site Plan
- M Environmental Solution - Vegetation
- N Full Project Aerial View
- O Environmental Solution - Green Roofs
- P Environmental Solution - Water Collection
- Q Rendered Views



A

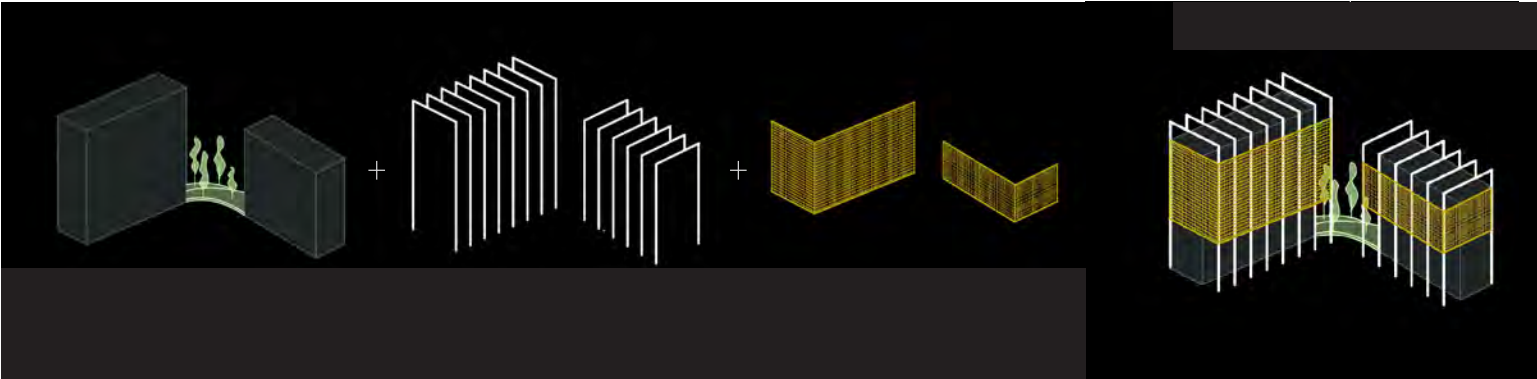


B

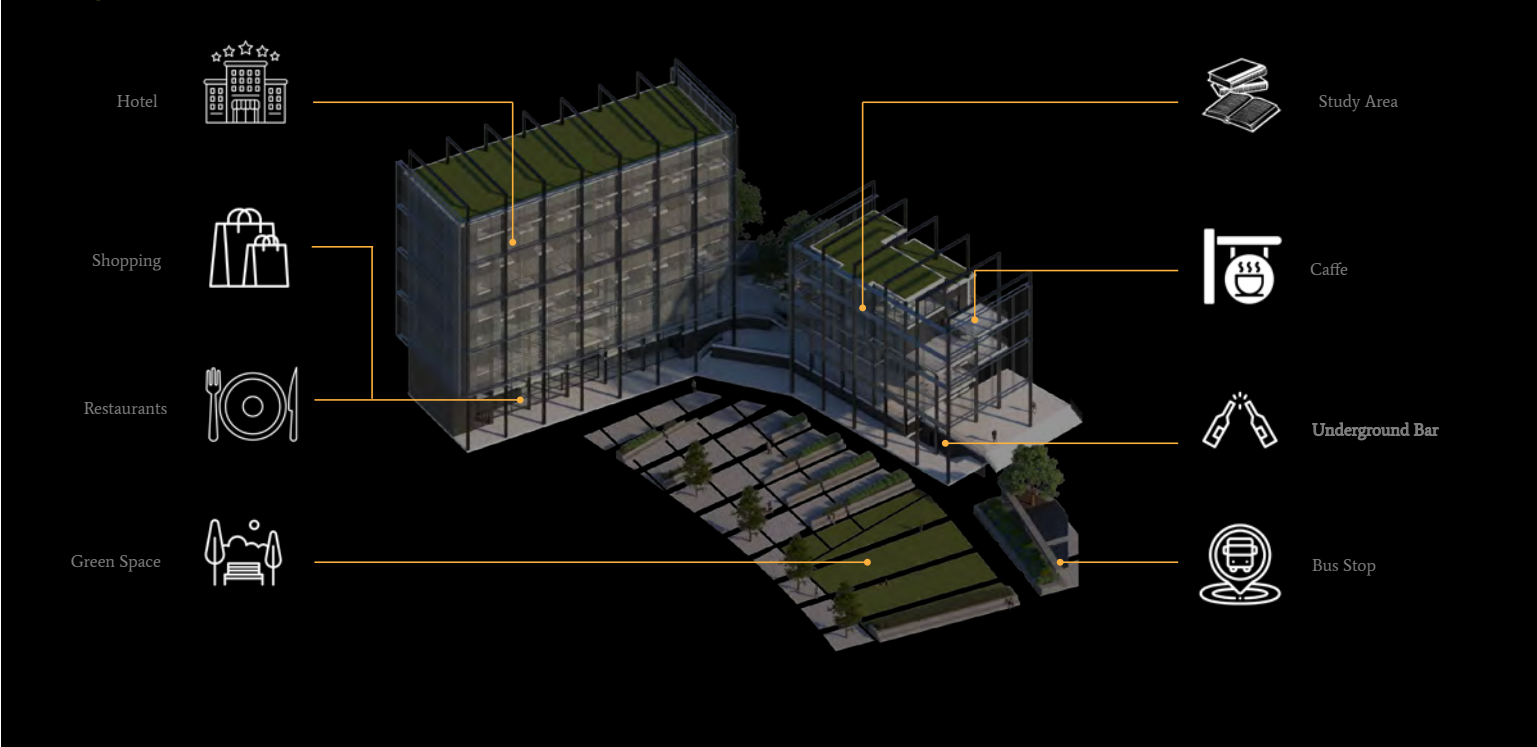


C





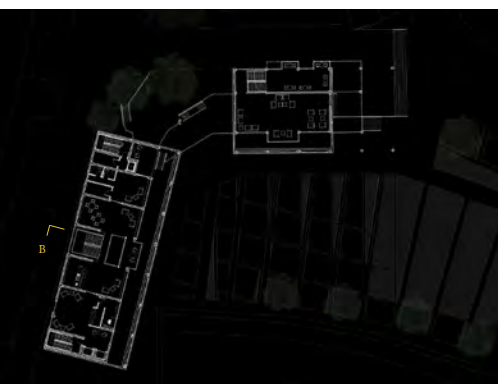
D



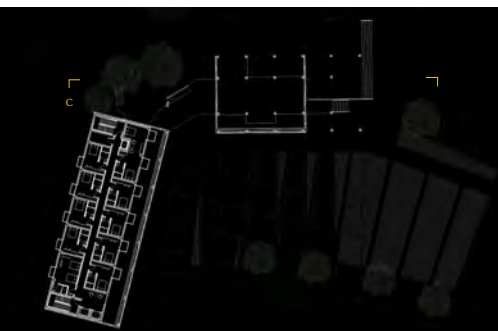
E



F



H



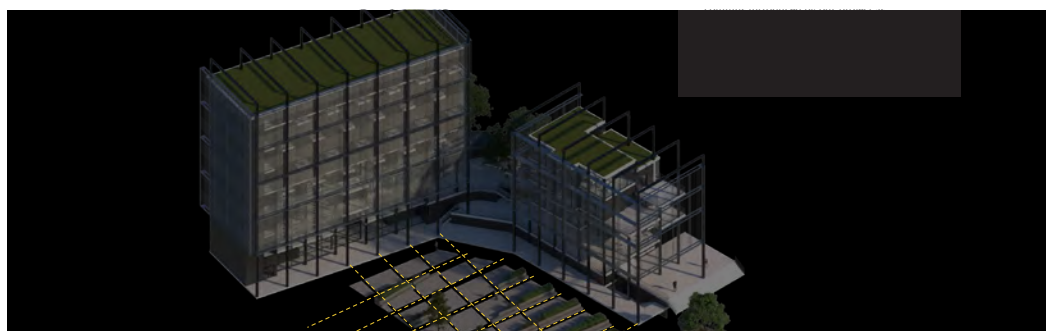
J



G



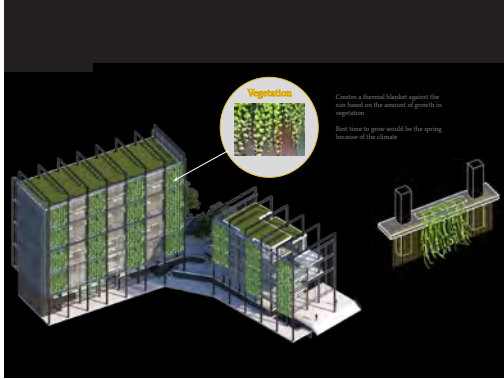
I



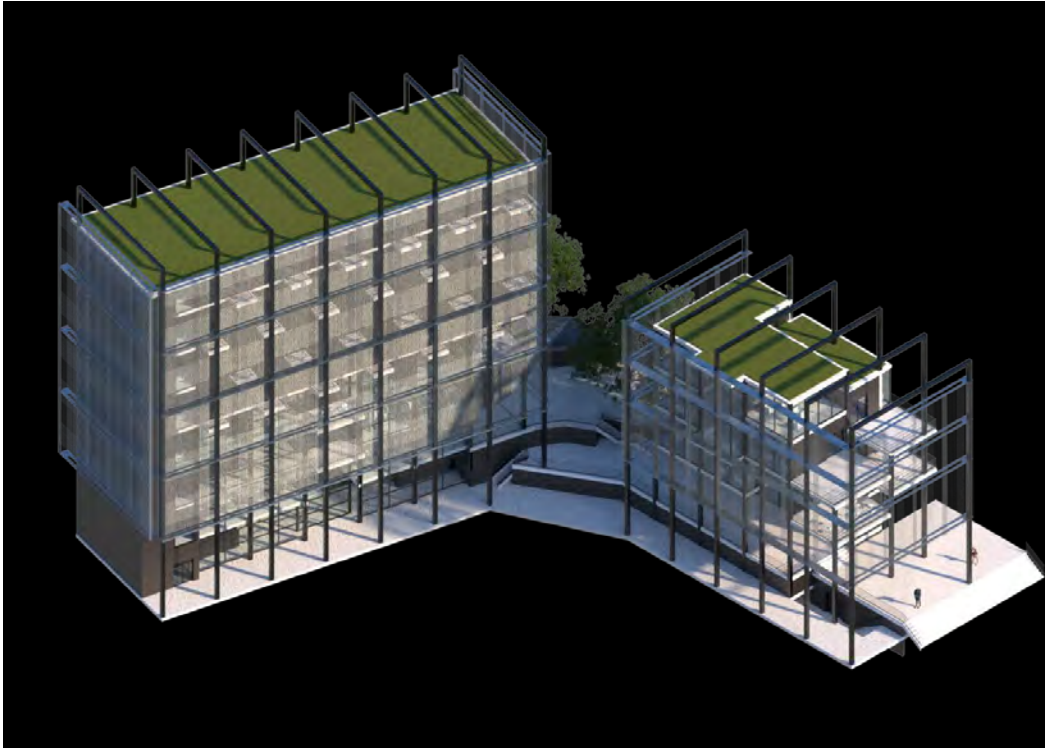
K



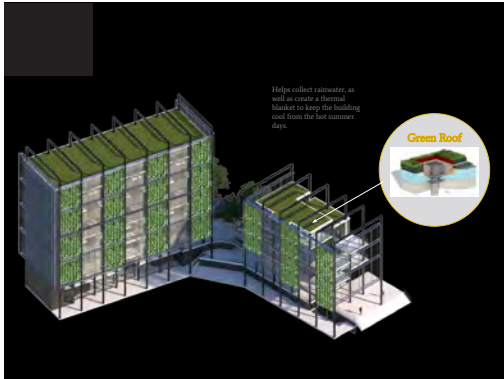
L



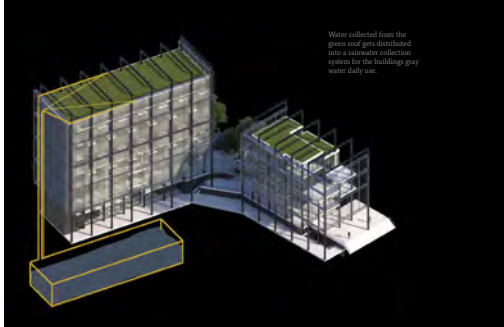
M



N



O



P



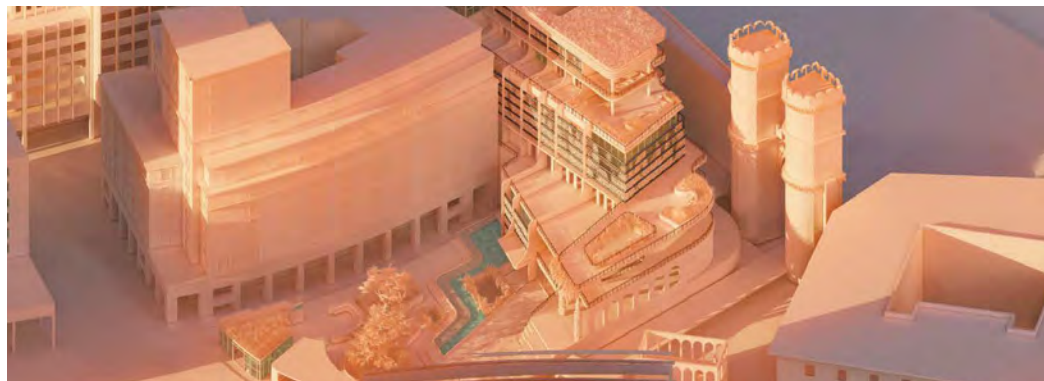




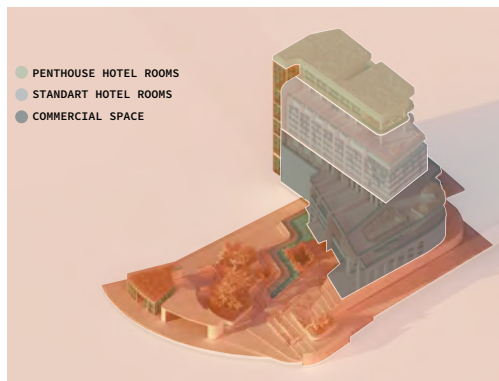


## ILAN ARONOVSKI + VALENTYNA WILLARD / D09

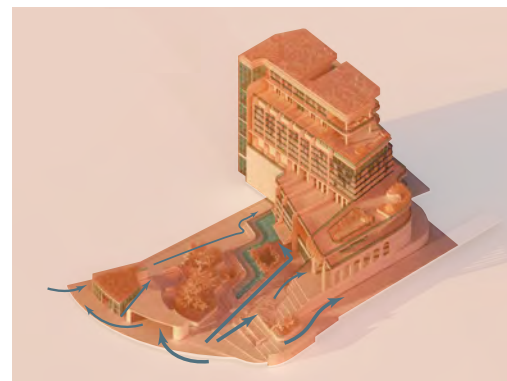
- A Site Axonometric
- B Program Diagram
- C Circulation Diagram
- D Solar Heat Gain Prevention Render
- E Water Collection System Render
- F Solar Analysis Summer
- G Solar Analysis Winter
- H Double Floor - Heat Prevention System
- I Sun Elevations Summer
- J Sun Elevation Winter
- K Solar Heat Gain Prevention System
- L Double Glass Facade
- M Custom Louvre System
- N Double Floor - Water Collection System
- O Site Plan
- P Hotel Lobby and Restaurant Floor Plan
- Q Commercial Space Floor Plan
- R Full Project Aerial View
- S Hotel Floor Plan
- T Hotel Floor Plan
- U Wind Analysis Summer
- V Wind Analysis Winter
- W Wind Tunnel Cooling System Render
- X Wind Tunnel Cooling System Diagram
- Y Rendered Views
- Double Floor - Water Collection System



A



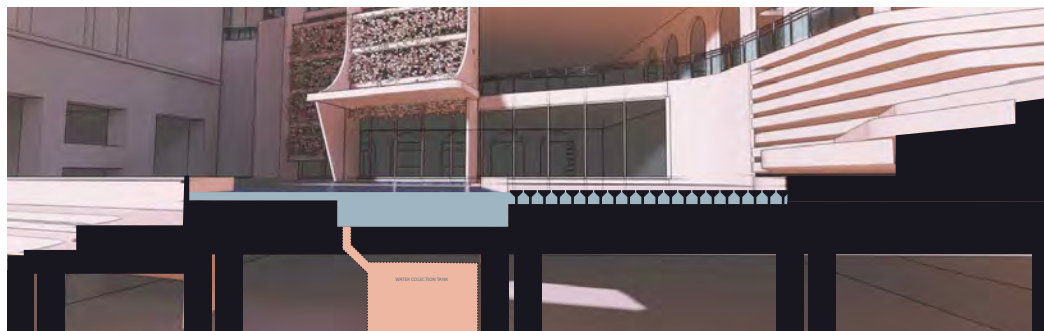
B



C



D

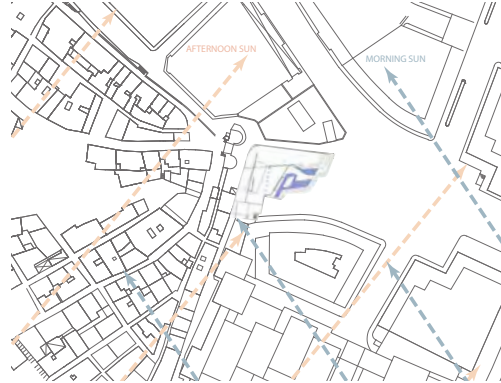


E

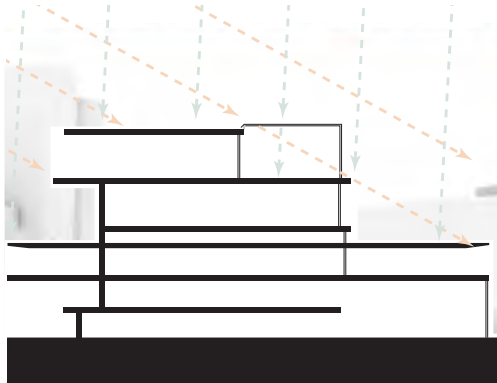




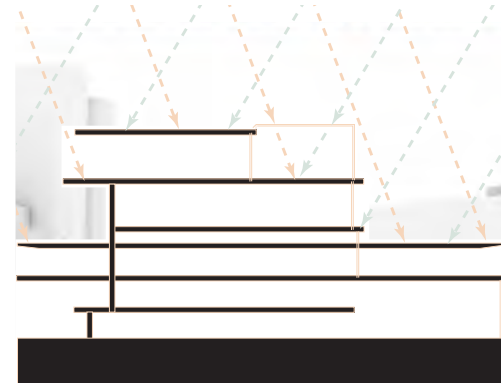
F



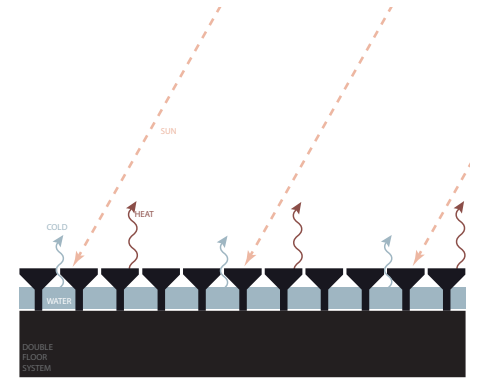
G



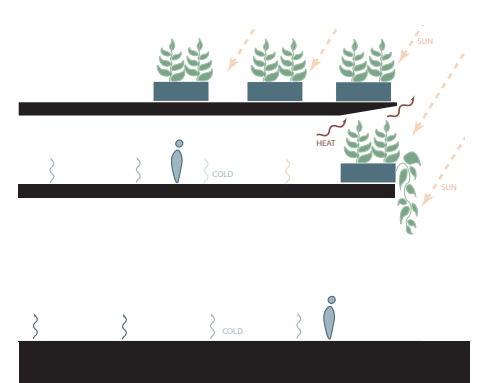
I



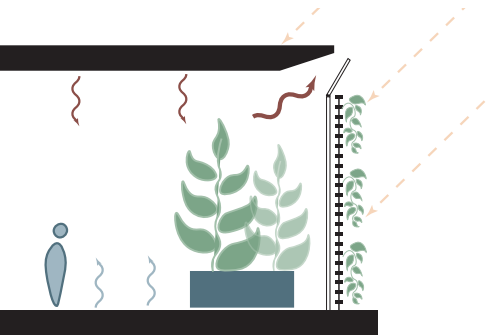
J



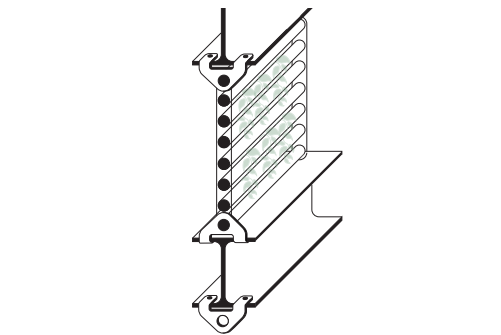
H



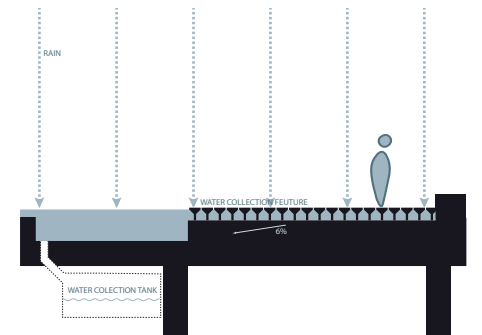
K



L



M



N



O



P



Q



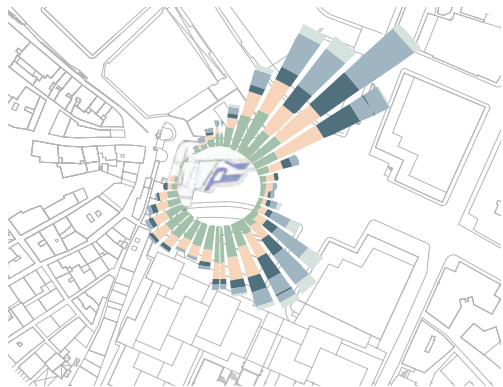
R



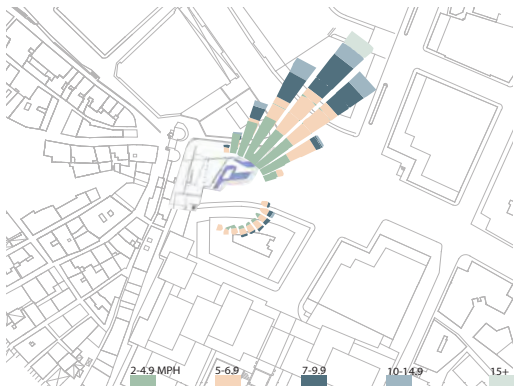
S



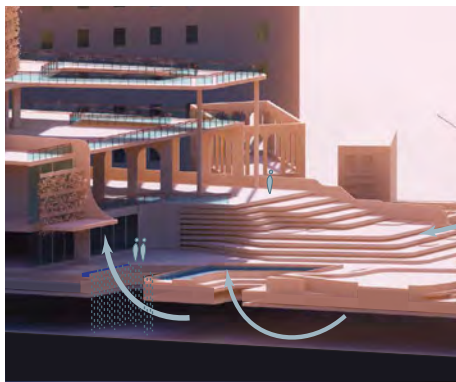
T



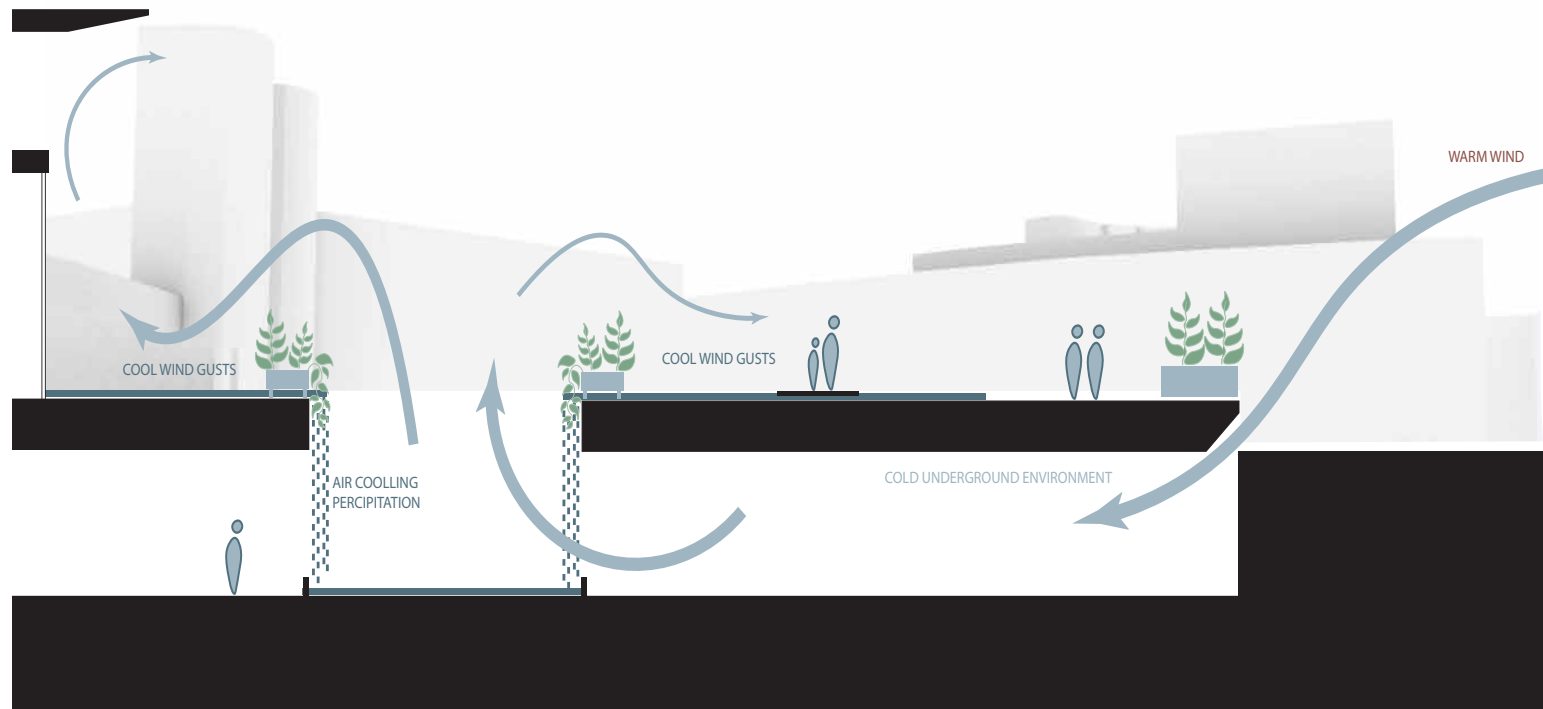
U



V



W



X









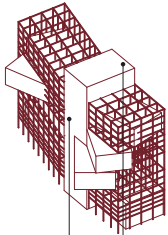
# JULYAN CADENA + THOMAS TOVAR / D09

- A Sun Analysis 1 PM
- B Sun Analysis Response
- C Shading Strategy
- D Wind Form
- E Massing Diagram
- F Program Diagram
- G Circulation Diagram
- H Site Plan
- I Double Skin Facade Detail
- J Ground Floor Plan
- K Second Floor Plan
- L Fourth Floor Plan
- M Iso of Site Moments
- N Rendered Longitudinal Section
- O Rendered Views



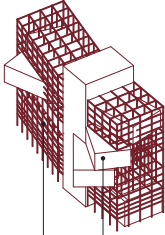
A

SUMMER



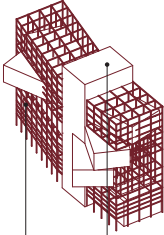
ROOFTOP REQUIRES SHADE STRUCTURE  
ATRIUM IMPLEMENTS STACK EFFECT FOR PASSIVE COOLING

FALL



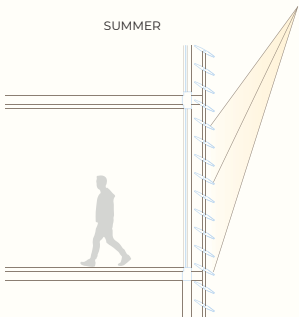
CANTILEVERED FLOORS SHADE PUBLIC AREA  
OPERABLE LOUVER SYSTEM MAXIMIZES SUNLIGHT

WINTER

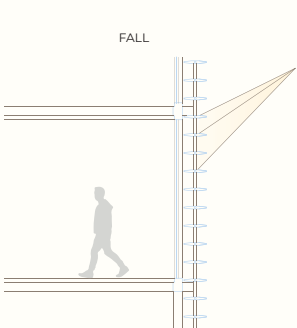


PROTRUDING ATRIUM AIDS TO HEAT STRUCTURE  
ARTIFICIAL LIGHTING REQUIRED FOR LOWER PORTION

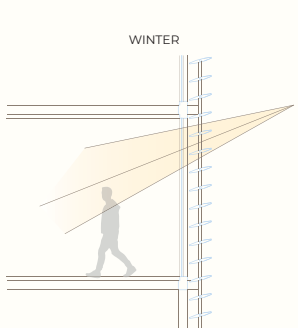
SUMMER



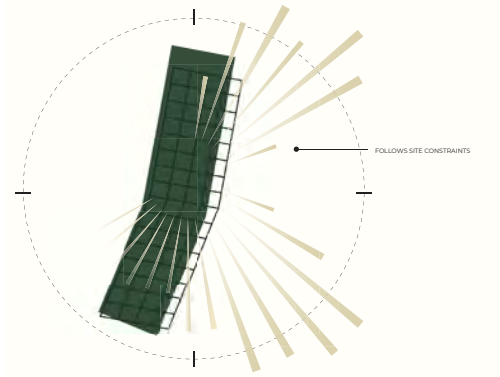
FALL



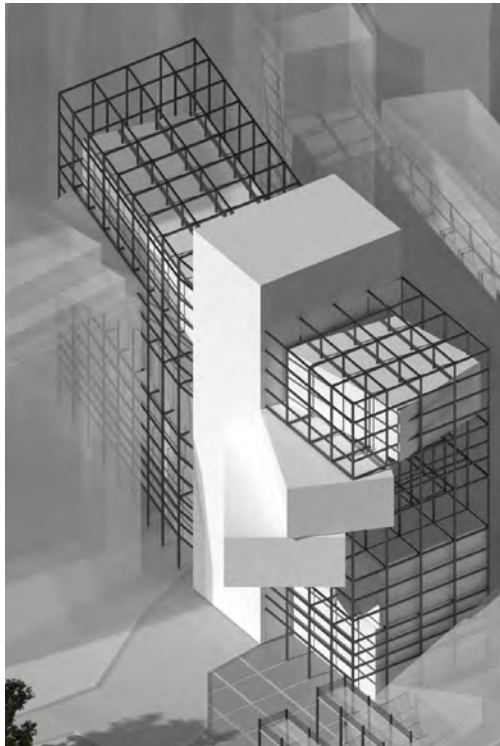
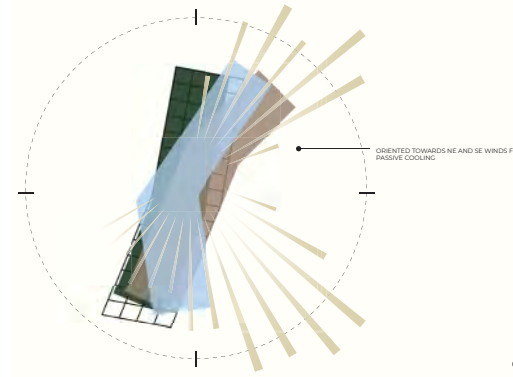
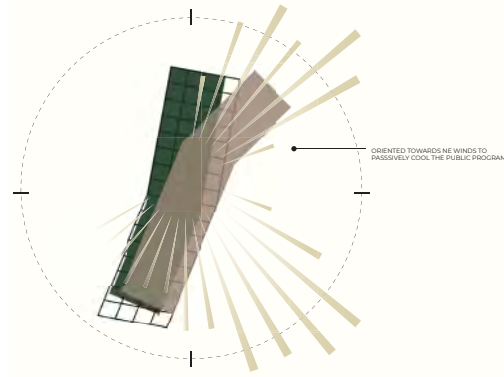
WINTER



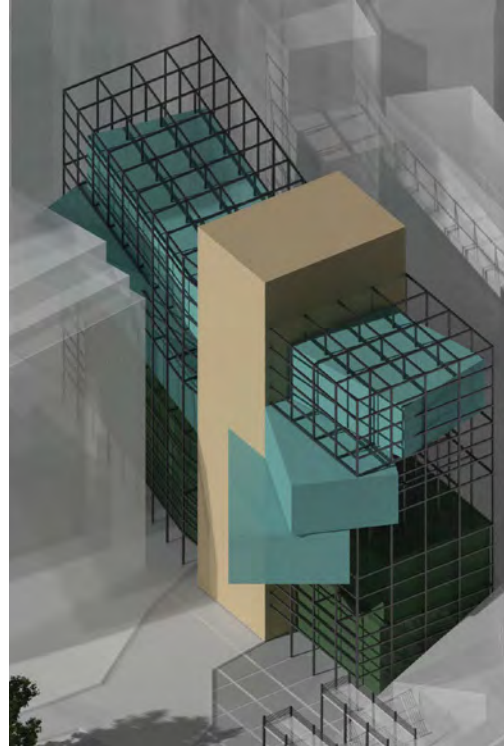




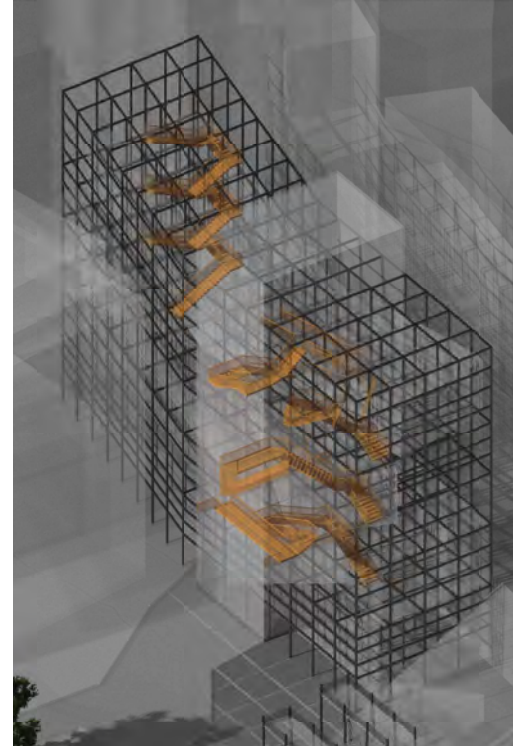
D



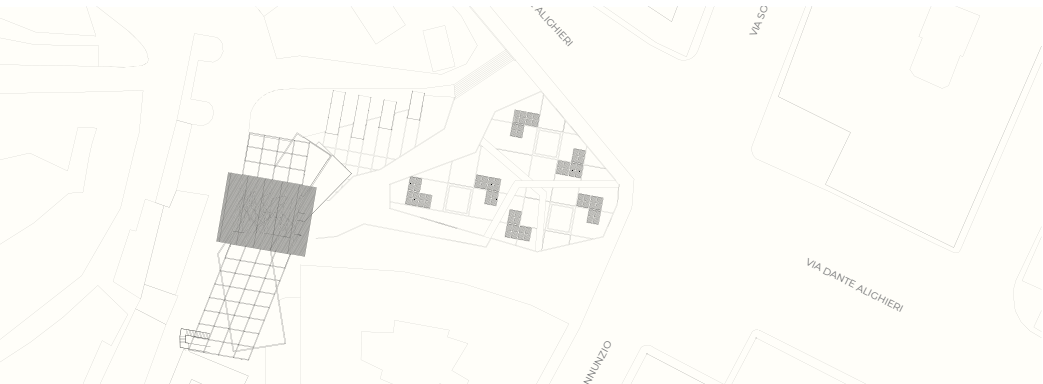
E



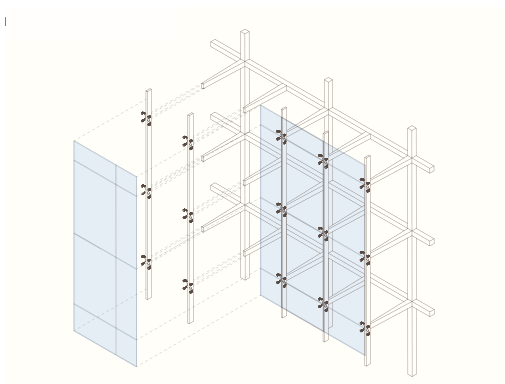
F



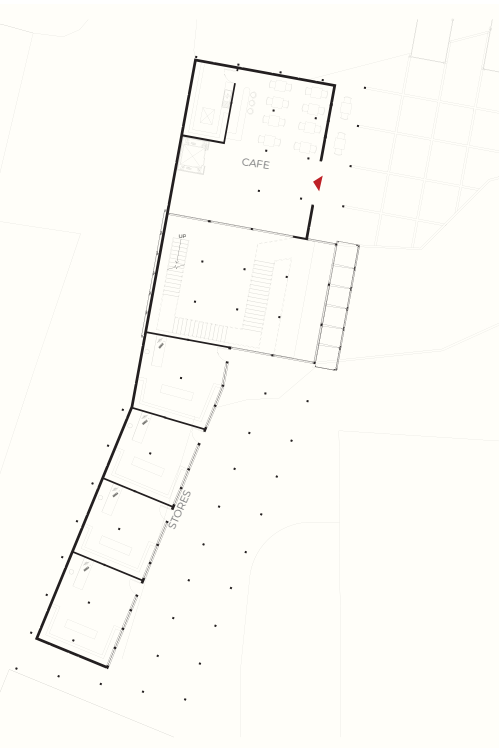
G



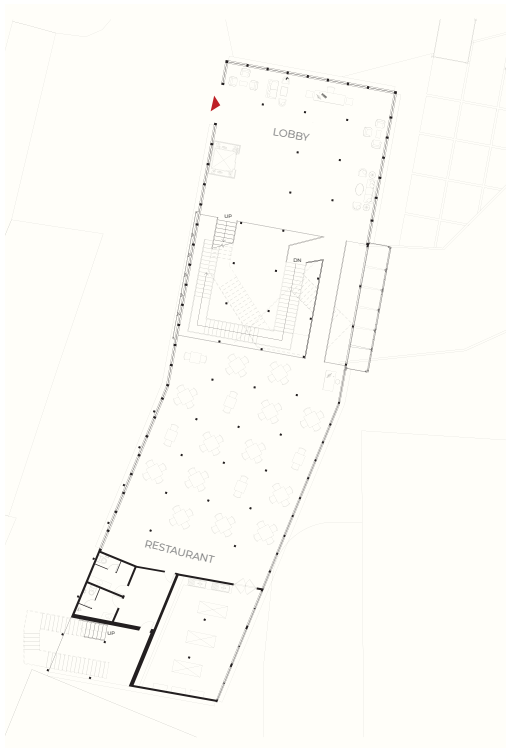
H



I



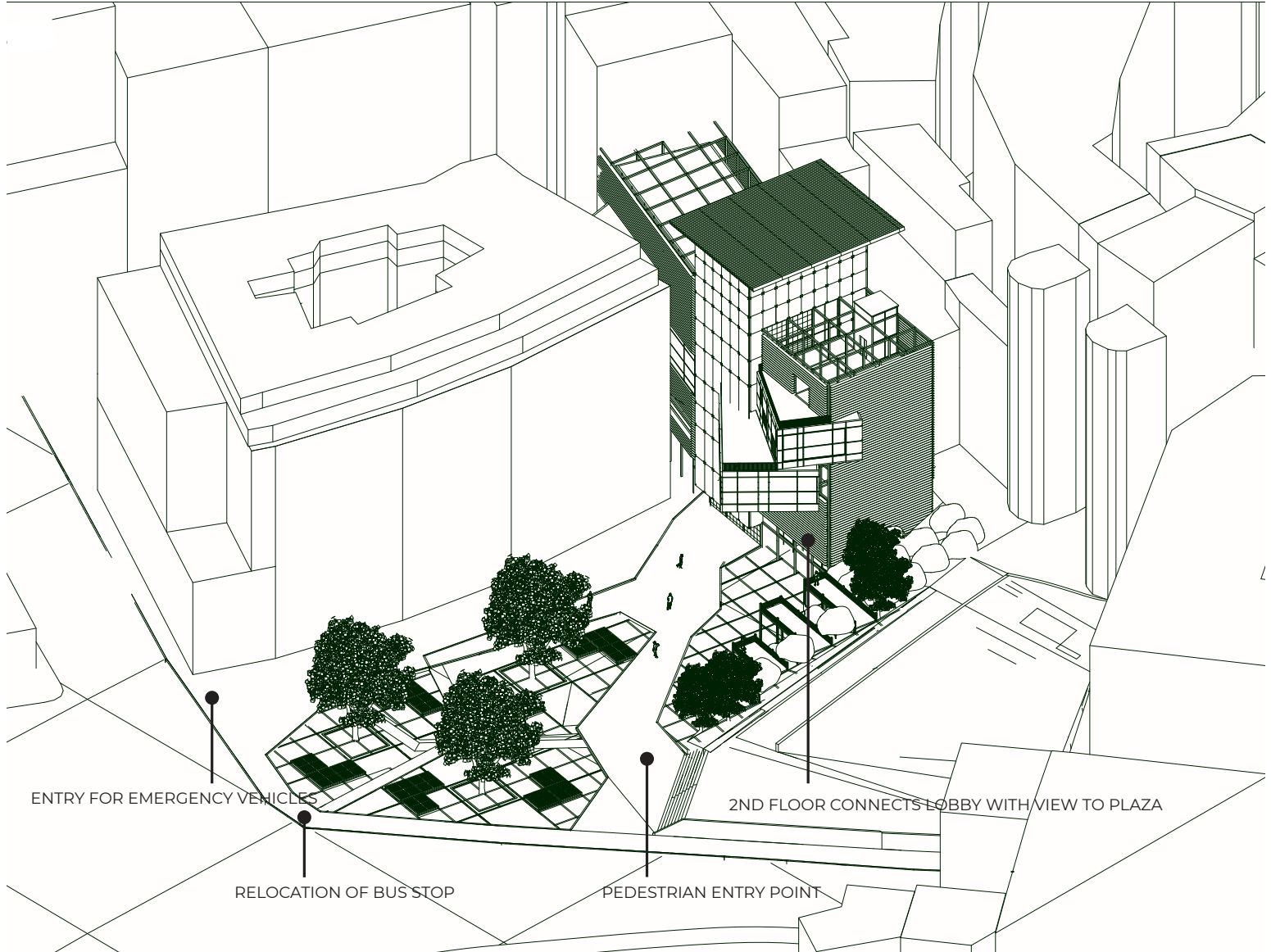
J



K



L











**Would you study abroad again?**



**“I would definitely do it again if I could! . . . I made great memories!!”** - Anyela de las Traviesas

**“If I had the chance to do it all again, I would without any hesitation.”** - Ege Elemec

**“I would 100% do it again I learned so much both in and out of school and it is just a once in a lifetime experience.”** - Chelsea Gutierrez

**“Definitely would do it again.”** - Olivia Beck

**“Would for sure do it again.”** - Shannon Bishop

**“Best experience in my collegiate life by far . . . I would recommend it to any architecture students.”** - Sebastian Caldas

**“Yes, 100%”** - Carlos Malmierca

**“Undoubtedly, the best experience ever and I would 100% do it again.”** - Thomas Tovar

**“Definitely, yes.”** - Valentyna Willard

**“I would do it all again if I could.”** - Daniela Benguria

**“Yes, I would do study aboard again . . . its a once in a life time experience to travel and study what you love.”** - Sebastian Hernandez

**“Yes I loved every part of it!”** - Minerva Cheung

**“I would go 100 more times.”** - Ilan Aronovoski

**“It was an experience to remember . . . I would 1000% do this again, it is an experience everyone should have.”** - Julyan Cadena

**“Yes 100%”** - Bryan Alfonso

**“AMAZINGGGG, I wish a lot of people could experience what we experienced.”** - Ana Olivares

**“Amazing if I could do it again I definitely would no doubt.”** - Sebastian Plasencia

**“Absolutely!”** - Sienna Lewis

**“In a moment’s notice.”** - Peter Dravgalis

**“It was a life changing four months of experiencing total and utter enjoyment and knowledge from truly one of the greatest professors this world has to offer. Loved it.”**

- Daniel Gonzalez

**“It has been among the great joys of my career to bring groups of young people to live in Genoa, to experience living in a new and different culture, and to learn about the architecture and design of this magnificent and beautiful place.”**

**-Eric Peterson**

UN  
FI  
GEN  
/ 23



FIU  
GEN  
/ 2 3

FIU  
GEN  
/ 2 3

FIU  
GEN  
/ 2 3

FIU  
GEN  
/ 2 3

FIU  
GEN  
/ 2 3

FIU  
GEN  
/ 2 3

FIU  
GEN  
/ 2 3

FIU  
GEN  
/ 2 3

FIU  
GEN  
/ 2 3

FIU  
GEN  
/ 2 3

FIU  
GEN  
/ 2 3

FIU  
GEN  
/ 2 3

FIU  
GEN  
/ 2 3

FIU  
GEN  
/ 2 3

FIU  
GEN  
/ 2 3

FIU  
GEN  
/ 2 3

FIU  
GEN  
/ 2 3

FIU  
GEN  
/ 2 3