

Partnering with SL Swann Enterprises, LLC



Wayne L. Swann | President | wswann@earthlink.net | (301) 266-7789
SL Swann Enterprises, LLC

Agenda

- Our Mission
- Organizational Effectiveness
- Our Services
- Next Steps

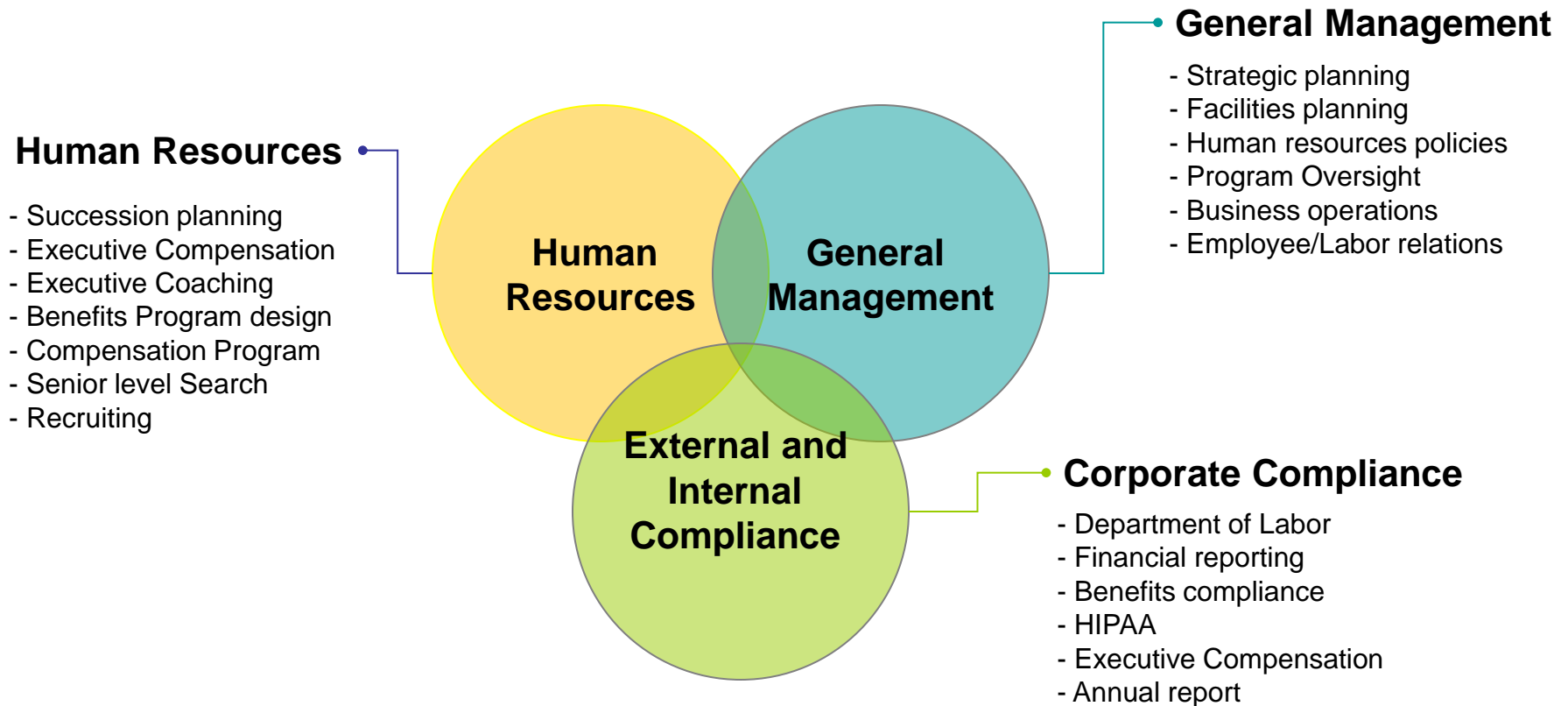


Our Mission

- To help individuals and organizations achieve their business objectives and create long-term sustainable success.
- Through client partnerships, **SL Swann Enterprises, LLC** identifies organizational development needs; delivers customized products/services, and interventions that improve individual and organizational performance.

Organizational Effectiveness

Running an organization requires a broad set of skills and expertise.



Organizational Effectiveness

Effectively running the business is essential to the overall success of the organization.



**General
Management**

- **General Management**

- Strategic planning
- Facilities planning
- Employee/Labor Relations
- Program oversight
- Human resources policies
- Business operations

- Business problems distract management from the organizations' primary mission
- Nationally, some healthcare organizations have struggled with management issues
- Top performing organizations have strong operational systems

SL Swann Enterprises, LLC 's Services

SL Swann Enterprises, LLC services were designed specifically to create strong operational foundations in organizations

SL Swann Enterprises, LLC's Services

Benefits to organizations

General
Management

Strategic Management:

- Succession planning
- Executive Compensation
- Executive Coaching
- Benefits Program design
- Compensation Program design
- Senior level Search

Operations Management:

- Human resources
- General Management
- Employee/Labor relations

- Receive expertise at an affordable price
- Prevent costly mistakes
- Save money with more efficient process

- Prevent avoidable problems
- Improve processes and the quality of services

Corporate
Compliance

Corporate Compliance:

- Department of Labor
- Financial reporting
- Benefit Program compliance

- Maintain compliance and avoid fines and penalties

SL Swann Enterprises, LLC's Services

SL Swann Enterprises, LLC helps organizations plan and execute sustainable business models

SL Swann Enterprises, LLC Components of Service



General Management:

| | |
|-----------------------|---|
| - Strategic planning | Contingency planning, medium and long-term strategic planning, & organizational change management strategies |
| - Facilities planning | Needs assessment, budgeting, financing, & contingency plans |
| - Program tracking | Program identification, cost allocation, & reporting |
| - Internal controls | Financial processes, cash handling procedures, and bank account structure |
| - Business operations | Records management, budget variance reporting and analysis |
| - Human resources | Payroll, health insurance, retirement planning (403b), 1099's, unemployment insurance, social security, and recruiting. |

SL Swann Enterprises, LLC's Services

SL Swann Enterprises, LLC helps organizations plan and execute sustainable business models

SL Swann Enterprises, LLC Components of Service



Corporate Compliance:

- Department of Labor

Fair Labor Standards Act compliance and general statutory compliance (EEO, ADA, etc...)

- Financial Reporting

Program identification, grant requirements & reporting

- Benefits program compliance

HIPAA compliance, Form 5500 filing for welfare plans

Principal Wayne L. Swann

- Mr. Swann has over 25 years of experience as a senior level executive with broad experience in general management, healthcare and human resources administration, with specific expertise in search, compensation and benefits, contract negotiations, organizational development, performance management and training for both employers and consulting clients.

Principal Wayne L. Swann,

- Mr. Swann has an Executive Masters in General Administration from the University of Maryland, College Park, MD, and a Bachelor's degree in Political Science from Rutgers College, New Brunswick, NJ. Mr. Swann has a designation as Senior Professional in Human Resources (**SPHR**), and is certified for life and **SHRM-SCP**. Mr. Swann is also a **Fellow** in the American College of Healthcare Executives (ACHE).

Reasons to Consider SL Swann Enterprises, LLC

- **Focus** – SL Swann Enterprises, LLC is focused on serving. We are familiar with the challenges you face, the vendors and officials you interact with, and the specific rules and regulations you are under.



Reasons to Consider SL Swann Enterprises, LLC

- **Track Record** – SL Swann Enterprises, is building a reputation for delivering strong management services at an affordable price
- **Responsiveness** – Everyone at SL Swann Enterprises, is always available



Endorsements

- Served on the Merger Team when Group Health Association, Washington , DC was sold to Humana, Louisville, Ky. Handled all HR and union issues, terminated the GHA defined benefit plan (\$68 million in assets), established a Professional Corporation for 110 physicians and funded the Consumer Health Foundation (\$23 million in assets).

Endorsements

- Served as the key executive in charge of transition when Axent Technologies (750 employees) merged with Symantec Corporation (in a stock transaction) managed HR and operational transitional issues incorporating multiple national and international locations. Successfully transitioned all staff to new roles within the new company or positions outside the organization.

Questions?

- Please contact Wayne L. Swann SPHR, FACHE at 301 266-7789 or wswann@earthlink.net to ask questions or schedule a presentation
- Thank you for your consideration

