



ToxReady™ Plates

Pre-plated, Assay Ready
Cryopreserved Cells

- No more routine cell culture and counting!
- Prepared for cell viability and functional assays
- Streamline your drug screening today



The Challenge

Drug screening utilises cell viability and functional assays as a cost-effective, high throughput screening platform with minimal user intervention. However, the challenges of routine cell culture limit this process:

Challenges of routine cell culture





- Time-Ineffective**
Time is spent handling cells rather than completing valuable assays
- Assay Variability**
Genetic drift and inconsistent plating reduces reproducibility
- Contamination**
Bacterial and fungal contamination can interrupt experiments
- Plastic Waste**
Excessive plastic waste from flasks, culture dishes, tips, etc.

Advantages

-  No cell counting or routine culture
-  Ready-to-use convenience
-  ToxReady™ plates are safely banked at -80 °C, minimising disruption in the event of contamination
-  Straightforward three-step process
-  Optimal assay formats and densities for accurate and reproducible results
-  Free up valuable time and reduce staffing demands
-  Resources covering popular assays used in drug screening
-  Demand-Driven Delivery

The Solution: ToxReady™ Plates

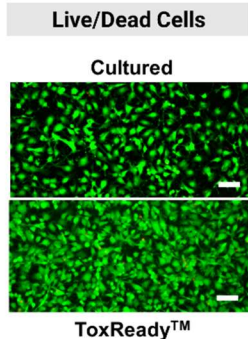
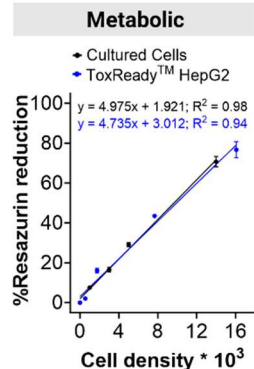
The solution is simple, **no more routine cell culture!** In four simple steps ToxReady™ Plates are ready for your drug screening applications in 24 hours.

			
Store	Thaw	Incubate	Ready-to-Use
Store ToxReady™ plates at -80 °C	Use your standard medium warmed to 37 °C	Cells are ready in 24 hours	Compatible with major viability and functional assays

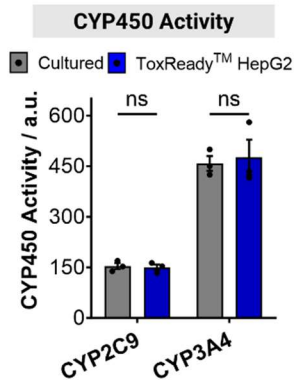
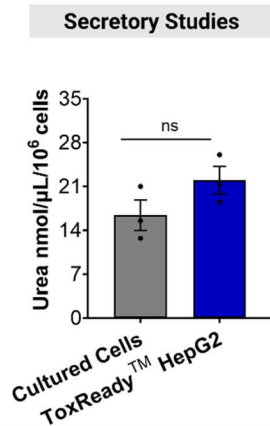
Applications

ToxReady™ plates perform comparably to routinely cultured cells in multiple assays used in drug screening.

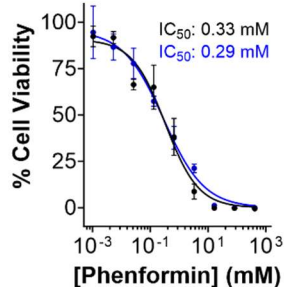
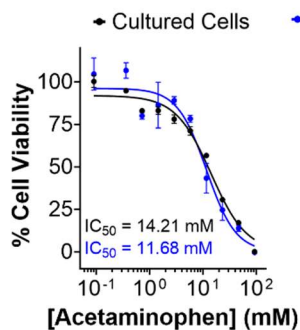
Viability Assays



Drug Metabolism and Interaction Assays



Example Dose-Response Curves



Current ToxReady™ Products

ToxReady plates are provided at three different confluency levels and two different plate formats to ensure compatibility with your assays. Cell lines currently offered include the widely used A549 and HepG2 cells.

Cell Lines		Well Plate Format		Confluency Levels		
A549	HepG2	24 well	96 well*	Low 20 – 30 %	Medium 40 – 60 %	High >70%

REF Number	Cell line	Well Plate	Confluency Level**
A5490024PSCLLOW	A549	24, clear	Low
A5490024PSCLMID	A549	24, clear	Medium
A5490024PSCLHIG	A549	24, clear	High
A5490096PSCLLOW	A549	96, clear	Low
A5490096PSCLMID	A549	96, clear	Medium
A5490096PSCLHIG	A549	96, clear	High
HPG20024PSCLLOW	HepG2	24, clear	Low
HPG20024PSCLMID	HepG2	24, clear	Medium
HPG20024PSCLHIG	HepG2	24, clear	High
HPG20096PSCLLOW	HepG2	96, clear	Low
HPG20096PSCLMID	HepG2	96, clear	Medium
HPG20096PSCLHIG	HepG2	96, clear	High

* The outer wells of 96 well plates contain no cells to reduce edge effects. The inner 60 wells contain cells.

** See product specification sheet for details on approximate cell number and recommended densities for each type of assay.

Find Out More

Visit our website:



Buy Now

Visit our online store:



CryoLogyx Ltd
Coventry | UK

info@cryologyx.com | www.cryologyx.com

CRYOLOGYX