

ToxReady™ HepG2 24 Well Plates

REF: HPG20024PSCLLOW, HPG20024PSCLMID, HPG20024PSCLHIG

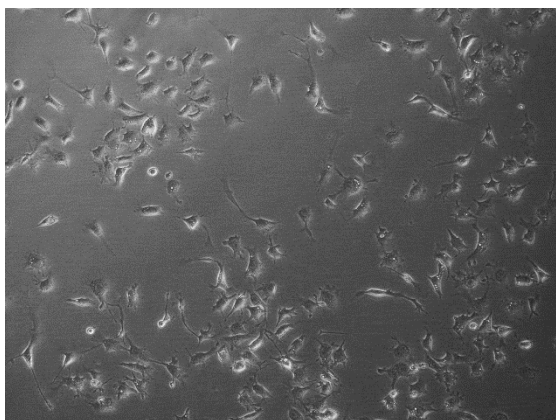
For research use only. Not for use in diagnostic procedures.

Description

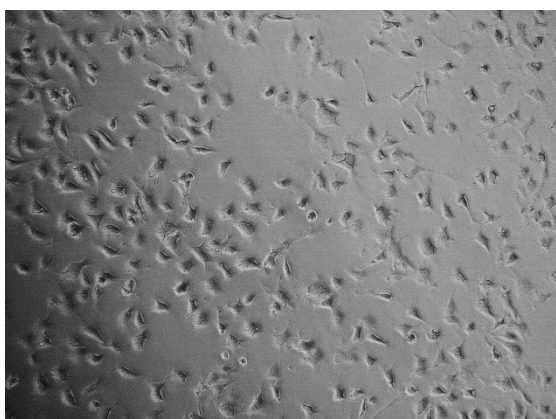
ToxReady™ HepG2 24 Well Plates contains human hepatocellular carcinoma derived cells cryopreserved directly adhered to 24 well plates with the use of CryoLogyx's patented CryoShield™ formulation. HepG2 cells perform many differentiated hepatic functions, making them the most widely used cell line in drug discovery for drug metabolism and hepatotoxicity testing.^{1,2} ToxReady™ HepG2 24 Well Plates are compatible with all major assays 24 hours after thawing. Over 80% cell viability is expected post-thaw, with cells retaining healthy morphology, immediate proliferative capacity, metabolic activity and membrane integrity.³

ToxReady™ HepG2 24 Well Plates are provided at three different confluency levels:

- Low (HPG20024PSCLLOW), 20 – 30% confluency, ~50k cell per well



- Medium (HPG20024PSCLMID), 40 – 60% confluency, ~100k cell per well



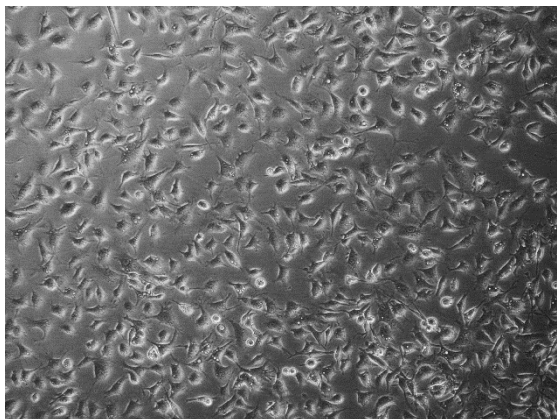
Product Specification

ToxReady™ Plates



Simplifying and accelerating cell-based assays

- High (HPG20024PSCLHIG), > 70% confluency, ~200k cell per well



Application Notes

ToxReady™ HepG2 24 Well Plates can be used to replace conventionally cultured cells for all major assays including proliferation, viability, and drug IC₅₀ determination.

[Application Notes](#) for the following assays are available:

- Proliferation
- Resazurin reduction (metabolic)
- Calcein and ethidium iodide staining
- Imaging caspase-3/-7 activation in real-time
- Drug IC₅₀ value determination

Content

Cryopreserved adherent HepG2 cells in a 24 well plate. Each well contains >20 µL of CryoLogyx's proprietary cryoprotectant formulation.

Receipt & Storage

Product shipment: Dry ice. Upon receipt, confirm that dry ice is covering the ToxReady™ HepG2 96 Well Plates

Product storage: immediately transfer to -80 °C freezer. Note: Storage at higher temperatures (>-80 °C) may affect the expiry date stated on the packaging.

Product use: Consult the "[General Thaw-and-Use ToxReady™ HepG2 24 Well Plates Protocol](#)" when thawing. Thawed products cannot be re-frozen.

Product Specification

ToxReady™ Plates



Simplifying and accelerating cell-based assays

Symbols on Labels

REF Reference number

LOT Lot number

 Expiry date

Packaging & Plate Information

Information on packaging: Reference number, lot number, expiry date, Quickstart guide, QR code for further detailed instructions.

Information on well plate: cell type, passage number and lot number encoded barcode

Precautions

This product is for professional laboratory use only. The data and results produced using ToxReady™ HepG2 24 Well Plates should not be used for diagnostic purposes, therapeutics or human and animal consumption.

ToxReady™ HepG2 24 Well Plates utilise HepG2 cells sourced from ATCC (HB-8065™). HepG2 cells are classified as BSL 1 and are of minimal risk to the user. However, it is the users responsibility to understand the hazards associated with the material per the organisation's policies and procedures as well as any other applicable regulations enforced by your local or national agencies.

CryoLogyx highly recommends that appropriate personal protective equipment is used when removing the plates from dry ice shipping and handling plates stored at -80 °C.

Certificate of Analysis

Certificate of analysis is available on delivery and can also be requested at www.cryologyx.com or by email at info@cryologyx.com.

Warranty

CryoLogyx possesses a limited warranty restricting our liability to replace this product. CryoLogyx does not provide any other warranties of any kind, expressed or implied. However, our customer service team are willing to deal with requests case-by-case.

Product Specification

ToxReady™ Plates



Simplifying and accelerating cell-based assays

Proprietary Information

The recipient of ToxReady™ HepG2 24 Well Plates agrees to use the product for the purposes of conducting assays and not to subculture or give them to a third party.

The cryoprotectant formulations used to produce CryoLogyx products are covered by patents which is the property of CryoLogyx and the University of Warwick. Use of the cryoprotectant formulation or any attempt to reverse engineer the formulation is an infringement of these patents unless CryoLogyx has provided written permission.

Contact Information

CryoLogyx Ltd.
The Venture Centre
Sir William Lyons Road,
Coventry, CV4 7EZ.
Email: info@cryologyx.com
Website: www.cryologyx.com

References

1. Foster, K. A.; Oster, C. G.; Mayer, M. M.; Avery, M. L. and Audus, K. L. *Experimental Cell Research*, 1998, 243, 359–366.
2. Gao, Y.; Dorn, P.; Liu, S.; Deng, H.; Hall, S. R. R.; Peng, R. W.; Schmid and Marti, T. M. *Cancer Cell International*, 9 (317), 1–16.
3. Tomás, R. M. F.; Bissoyi, A.; Congdon, T. R.; Gibson, M. I. *Biomacromolecules* **2022**, 23 (9), 3948–3959.