

50 Account Routes 25K: Markets Selling Fast:

Secure the available position in your market today

- Master Distributor Agreement for 500K+ population
- Hands on support to help sign & acquire 50 independent stores (we come to your town)
- 50 Tower Beverage floor displays for introduction to stores (1 for each account)
- 50 Tunnel to Towers 8" x 8" static cling front window signs (1 for each account)
- 50 Tunnel to Towers 5" x 5" static cling cooler decals (1 for each account)
- 50 Tunnel to Towers t-shirts (1 for each account)
- 50 Tunnel to Towers hats (1 for each account)
- 250 Tunnel to Towers air fresheners (promotional giveaways)
- 250 Tower Beverage business cards
- 250 Tower Beverage sell sheets
- 1 Pallet of evenly mixed craft soda and sparkling water (1,248 12 pack cases)
- Minimum product re-order is 1 pallet \$1,872.00 delivered (\$1,248.00 R.O.I)
- Ongoing training and support provided by the company

Master Distributorship Package \$25,000.00

Note: This potential profit chart is for illustration purposes only!

	12 sold daily	18 sold daily	24 sold daily	36 sold daily
25	\$4,500	\$6,750	\$9,000	\$13,500
50	\$9,000	\$13,500	\$18,000	\$27,000
100	\$18,000	\$27,000	\$36,000	\$54,000

■	Indicates the number of accounts serviced
■	Indicates the number of beverages sold per day
□	Indicates monthly gross profit generated

ASSUMPTIONS FOR 100 ACCOUNT ROUTES

Servicing 20 accounts per day x 5 days =
100 accounts serviced per week.
100 accounts selling 12 beverages daily =
1200 beverages sold per day x 30 days =
36,000 beverages sold per month (100 account route).
36,000 beverages sold per month x \$0.50 (your profit) =
\$18,000.00 in monthly gross income to distributor.

MSRP *** \$1.79 - \$2.49

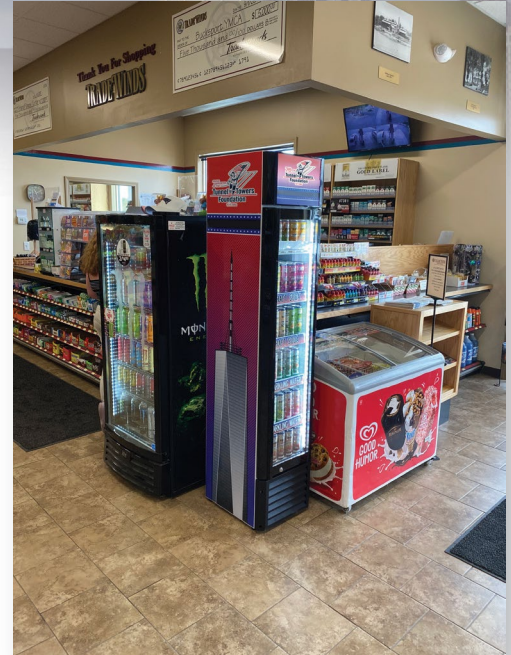
\$1.25 (sold to store)
\$0.75 (distributor cost delivered)
\$0.50 (distributor profit per can)

Note: Income earned by our distributors is based solely upon how much effort is set forth by "the distributor".
This is not a guarantee of income chart.

FREE SAMPLES - CLICK HERE

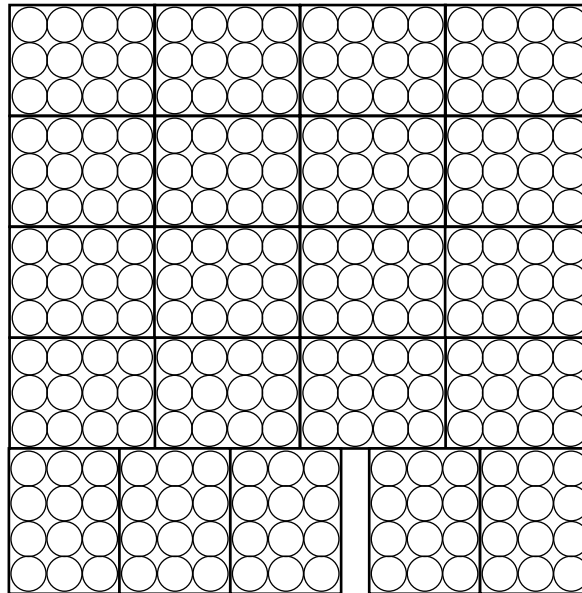
Distributor Re-Order Pricing & Specifications

CASE PACKAGE SIZE	TWELVE 12 OZ SLEEK CANS
CASE DIMENSIONS	7" X 9.75" X 6.25"
CASE WEIGHT	10.2 LBS PER CASE
PALLET DIMENSIONS	48" X 40" X 56"
PALLET PATTERN	26 CASES / LAYER X 8 LAYERS HIGH
PALLET QUANTITY	208 CASES
AVG. PALLET WEIGHT	2,172 LBS. (Weight of Goods + Pallet)
PALLETS PER TRUCKLOADS	20 PALLETS (43,440 LBS)
CASES PER TRUCKLOAD	4,160 CASES
CANS PER TRUCKLOAD	49,920 CANS
PALLETS PER 40' CONTAINER	20 PALLETS
CASES PER 40' CONTAINER	4,160 CASES
CANS PER 40' CONTAINER	49,920 CANS
PALLETS PER 20' CONTAINER	10 PALLETS
CASES PER 20' CONTAINER	2,080 CASES
CANS PER 20' CONTAINER	24,960 CANS



20 PALLETS OF PRODUCT IS THE MAXIMUM OVER THE ROAD WEIGHT LIMIT

40" x 48"
Layer
Configuration



Sparkling Water:

\$1,872.00 per pallet delivered
MSRP *** \$1.79 - \$2.49

Craft Soda:

\$1,872.00 per pallet delivered
MSRP *** \$1.79 - \$2.49

FREE SAMPLES - CLICK HERE

Routes For Sale

BUSINESS SUMMARY

For a limited time Tower Beverage USA is currently offering distributorship opportunities on a first-come, first serve basis, to qualified individuals. The business team and strategy lead the way with our vision and focus on quality service, value, and social and economic responsibility. Our products and great cause will continue to grow and capture the attention of media outlets and consumers throughout the USA.

This exciting new ground-floor opportunity and charitable alliances with the Tunnel to Towers Foundation and the FDNY Foundation offer a very attractive and profitable business situation for individuals seeking to become distributors and control the distribution of our beverage lines within their own protected market area of responsibility. The company donates 100% to nonprofit organizations that support, with competence, our veterans, fallen heroes, first responders, their families, and children in need throughout the USA. This plan outlines the company, products, market focus, action plan, and financial data.



MISSION

Tower Beverage USA is the manufacturer of our own superior-quality sparkling water and craft soda beverages with pure cane sugar and natural flavor. We use natural ingredients for health appeal with discriminating taste in mind.

Our goal is to become the premier supplier of new-age carbonated soft drinks in the United States. The company is committed to establishing itself as an active leader and member of the communities we serve throughout the USA and impacting customers' lives in more ways than just selling our products.



FREE SAMPLES - [CLICK HERE](#)

Product Information

ORANGE CRAFT SODA



Nutrition Facts	
Serving Size	1 Can
Amount Per Serving	
Calories	160
% Daily Value*	
Total Fat 0g	0%
Sodium 10mg	0%
Total Carbohydrate 40g	15%
Total Sugars 40g	
Includes 40g Added Sugars	80%
Protein 0g	0%
<small>Not a significant source of saturated fat, trans fat, cholesterol, dietary fiber, vitamin D, calcium, iron or potassium.</small>	
<small>* The % Daily Value tells you how much a nutrient in a serving of food contributes to a daily diet. 2,000 calories a day is used for general nutrition advice.</small>	

INGREDIENTS: CARBONATED WATER, PURE CANE SUGAR, NATURAL FLAVORS, CITRIC ACID, POTASSIUM SORBATE (PRESERVATIVE), SODIUM BENZOATE (PRESERVATIVE).



GINGER CRAFT SODA



Nutrition Facts	
Serving Size	1 Can
Amount Per Serving	
Calories	160
% Daily Value*	
Total Fat 0g	0%
Sodium 10mg	0%
Total Carbohydrate 40g	15%
Total Sugars 40g	
Includes 40g Added Sugars	80%
Protein 0g	0%
<small>Not a significant source of saturated fat, trans fat, cholesterol, dietary fiber, vitamin D, calcium, iron or potassium.</small>	
<small>* The % Daily Value tells you how much a nutrient in a serving of food contributes to a daily diet. 2,000 calories a day is used for general nutrition advice.</small>	

INGREDIENTS: CARBONATED WATER, PURE CANE SUGAR, NATURAL FLAVORS, CITRIC ACID, POTASSIUM SORBATE (PRESERVATIVE), SODIUM BENZOATE (PRESERVATIVE).



WATERMELON SPARKLING WATER



Nutrition Facts	
Serving Size	1 Can
Amount Per Serving	
Calories	10
% Daily Value*	
Total Fat 0g	0%
Sodium 0mg	0%
Total Carbohydrate 0g	0%
Total Sugars 0g	
Includes 0g Added Sugars	0%
Protein 0g	0%
<small>Not a significant source of saturated fat, trans fat, cholesterol, dietary fiber, vitamin D, calcium, iron or potassium.</small>	
<small>* The % Daily Value tells you how much a nutrient in a serving of food contributes to a daily diet. 2,000 calories a day is used for general nutrition advice.</small>	

INGREDIENTS: CARBONATED WATER, NATURAL FLAVORS.



CRANBERRY SPARKLING WATER



Nutrition Facts	
Serving Size	1 Can
Amount Per Serving	
Calories	10
% Daily Value*	
Total Fat 0g	0%
Sodium 0mg	0%
Total Carbohydrate 0g	0%
Total Sugars 0g	
Includes 0g Added Sugars	0%
Protein 0g	0%
<small>Not a significant source of saturated fat, trans fat, cholesterol, dietary fiber, vitamin D, calcium, iron or potassium.</small>	
<small>* The % Daily Value tells you how much a nutrient in a serving of food contributes to a daily diet. 2,000 calories a day is used for general nutrition advice.</small>	

INGREDIENTS: CARBONATED WATER, NATURAL FLAVORS.



FREE SAMPLES - CLICK HERE