



NEW CONSTRUCTION GUIDE 2026

A guide for customers experiencing
a new pool construction process.

2026
diamondpools.net



Table of **Contents**

- 1 About Us & Missions/Values
- 2 Pre-Construction
- 3 Excavation
- 4 Rough Plumb/Steel/Electrical
- 5 Guniting
- 6 Tile/Coping/Accent Wall
- 7 Concrete
- 8 Equipment
- 9 Plaster Info.
- 10 Traditional Smooth Plaster
- 11 Mini Pebble Plaster
- 12 Micro Pebble Plaster
- 13-14 Printable Pool Log
- 15 Automated Pool Covers
- 16-17 General Misc. & Warranty
- 18 Contact Info.
- 19 Pool Language Appendix

About Us

Trevor & Dani Curtis



Who We Are

We are a second-generation family owned and operated business that serves Solano County and the surrounding area. Trevor and Dani grew up in Vacaville and recently relocated to Dixon. With over 20 years of personal experience, we love working with our neighbors and delivering quality construction close to home. Throughout the project you may see our two boys, Colton and TJ, stop by the job site with their dad.

Mission & Values

It is our mission as a company to provide quality, personalized projects to our community. We work by the motto of "*where integrity meets craftsmanship*" so our customers can rest assured we will always do the right thing when it comes to your pool or spa project.

About Pre-Construction

- After we have received the signed contract and deposit, we begin working on drawing the pool for engineering and permit submittal.
- We are able to make minor changes to structure/shape, Baja shelf/steps/bench layout, after engineering is completed, but major changes do require us to update engineering which may result in an added fee if the change was after design approval. This includes adding an automated pool cover, major reconfiguration of the pool layout, or if major movement of the pool in relation to the yard is requested.
- Prior to start of excavation, we will email you 3D and 2D renderings of your proposed pool design. As stated, minor changes can be made along the way, but this gives a good idea of the final vision.
- We will then pay engineering costs and permit submittal fees and submit for approval. The timeline for permit review greatly varies between cities/counties. **Some get permits back as soon as 14 business days, while others can take 6+ weeks depending on the location and permitting process.**
- When the permit is approved, we pay for the remainder of permit fees upon pick up and schedule excavation to begin. The anticipated start date listed on contracts is an approximate start date, which means substantial work is expected to begin within 20 days of the contracted start date; however, this does not include delays due to non-issuance of permits or weather delays.
- If there was any agreed upon work to begin prior to start of construction (like removal of shed/bushes, etc.) please ensure this work is done in a timely manner to prevent delay in excavation.

About Excavation

- Excavation is the process of digging the pool and trenches for plumbing/electrical. It starts early (~8am) but the first few hours of day 1 are setting forms and typically quiet.
- Please clear the accessway in which heavy machinery will enter/exit the yard. This includes trash cans, vehicles, sheds, etc.
- As a courtesy, please consider notifying your immediate neighbors that excavation will be taking place so they have an opportunity to move their vehicles and close their windows to minimize dust inconvenience.
- Typically excavation takes 2 days to dig, and **we will place a temporary orange construction fence** in the access way from here through the rest of the project. Additionally secure fencing will need to be provided by homeowner as needed for pet/child securement.
- This is the beginning of the messy phase – at end of each day, crew will scrape the sidewalk, but the big clean will occur at the end
- **A baja shelf can be added/modified (usually free of charge) so long as it is decided on prior to excavation. Once the pool is dug, it requires increased labor and material to add/modify.**
- Once a dig date is scheduled, we recommend starting to reach out to local pool chemical companies for an estimate. You can tell them you should be ready for a new pool startup (typically a 2-week process) in around 6-12 weeks (depending on time of year) and would like to get on their schedule. They will need to be updated when the plaster date is scheduled so they can start their service within 24 hours after the pool is filled.
- The pool will appear larger/deeper than the final product due to the fact that the walls of the pool are around 12" thick.

About Rough Plumb/Electrical/Steel

- This is part of project where all water suction and return lines are being ran underground (**if you are considering adding a water/LED color features, now is the last chance for these type of changes.**)
- We recommend taking a photo of the backyard to have record of where conduits/pipes are run for when you may do future landscaping/construction projects.
- If you would like to add any underground utilities to other areas of the yard, now is the time to do it. Also discuss with Trevor if you are considering putting pool solar on your house, or adding a heater in the future. This can influence the placement of equipment/plumbing lines so we can maximize efficiency for the future.
- Not all benches and steps require steel (generally only walls, floors, and major structural components get steel). The final finish height of the steps/benches/baja shelf may be different than it appears at this stage because of this.

About Gunitite

- Please move all cars out of driveway and away from access way the night before gunitite is schedule.
- Starts early for prep, but noise does not usually start for a few hours. Once it is time to start the shoot, it will be noisy for several hours.
- This is the time to add umbrella holders as needed. You can add them on for \$50/holder if not already included in the contract (umbrella not included). Just make sure to notify Trevor by a few days before so we can have them on site for the day of gunitite.
- Starting the morning after gunitite, start **watering down the pool with a hose 2-3 times per day, for 7 days** (more is best). This involves heavy saturation if watering with a hose or setting up an automatic sprinkler on a timer in the pool to keep gunitite hydrated for a stronger cure. It is ok to walk on the gunitite to perform this process.
- As the gunitite dries, spider cracking may be present on the surface. This is normal, as the surface dries faster than the rest of the structure. These cracks do not go all the way through, and will not cause any structural issues when the pool is filled.

About Tile/Coping/Accent Walls

Tile

- The sooner you are able to choose a [tile](#) the smoother it will be – we can check for pricing and availability early and order anything that may need to be shipped in from afar. Typically, all 6" x 6" porcelain tiles are including the in tile material allotment price. Glass tiles and porcelain deco tiles are usually additional, a few hundred dollars. Other tile sizing is allowed, but may be subject to material/labor increase.
- Within a couple days of gunite, we can start tile and keep the project moving.
- If your contract does not include step tile or mosaics, this is the time to add them on. These will be installed close to the plaster date, but often these materials are speciality order and need time to come in. Delaying ordering mosaics/step tile until end of project may result in a delay in plastering your pool when anticipated.

Coping

- Some contracts specify coping surrounding the pool. Like tile, choosing a coping early in the process can help things move along as sometimes it must be transferred in from other states. You can explore coping options through [Aquabella](#), [Thompsons Building Supply](#), [Brickyard](#), or [NPT](#). Your contract will specify the price allotment for coping material as well as the size requirement – typically coping needs to be 12" x 24" x 3CM unless specified otherwise.

Raised Accent Wall

- Standard tile faced installation includes the front and the sides of the raised wall. Some customers want a [stone veneer finish](#) instead of tile, but keep in mind it may be subject to a change order if over the tile material allotment as outline in the contract . It is standard for the back of the raised wall to be unfinished. Most customers (including on our personal pool), leave it as is. Some customers choose to apply stucco or paint directly on it. If you would like to upgrade to have tile surrounding the entire wall, we can provide an estimate if not already done so.

About Concrete

- On day of concrete pour, another early morning, with a quiet start and a louder period during the pour. There will be several finishers who will hand trial the concrete with a broom or stamped finish. We can also add release powders if needed for stamped concrete, and umbrella holders in this stage so long as it is discussed beforehand.
- Starting 24 hours after concrete is poured, **start lightly watering down the concrete twice a day with a gentle mist.** This allows the concrete to cure more evenly and helps to reduce the color variation that is an inherent part of concrete, as well as minimizing cracking. If there is rain forecasted, check with Trevor regarding instructions for watering concrete.
- Depending on time of year, you can walk on concrete around 48 hours after the pour. Animals should not walk on the concrete for at least 7 days so avoid claw marks that may scrape the concrete. Children should also be closely supervised.

About Equipment





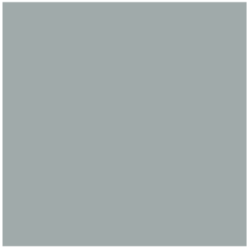

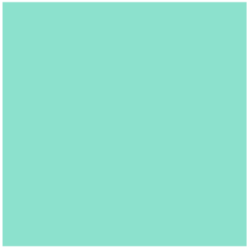
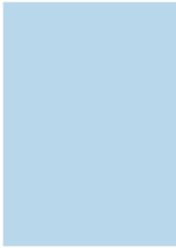
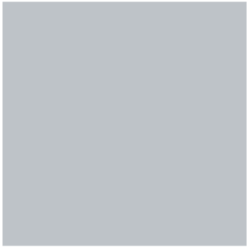
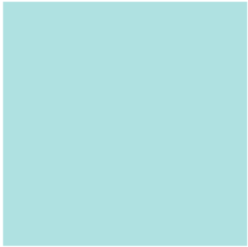
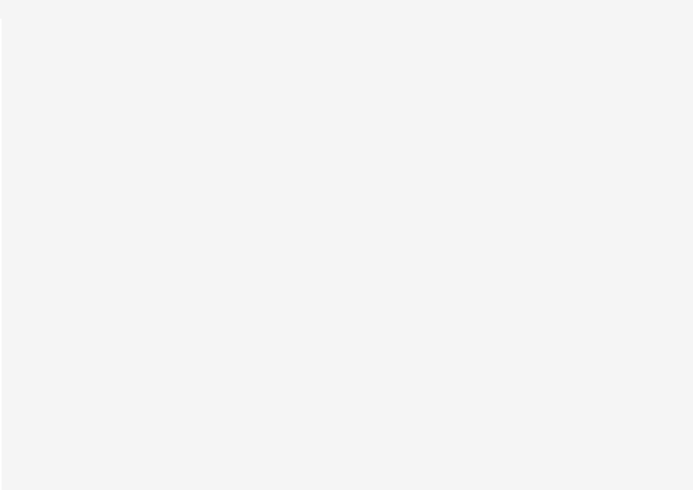
- This is the part of the process where all filtration and cleaning equipment is installed, as well as any automation or lighting for the pool.
- Equipment pads are always included in our standard price points. Decking is specified by the square footage amount listed on the contract. The equipment pad will be poured to match the type of concrete outlined in your contract, and will be gray broom finish if only coping is installed unless otherwise specified.
- The main brands we install are [Hayward](#) and [Pentair](#) equipment.

About Plaster

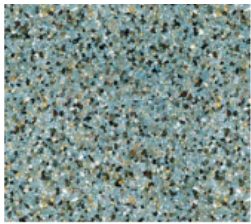
- Plaster may be subject to mottling and discoloration because it is a natural substance and it is an inherent characteristic of plaster product
 - [Check out this informative link](#)
 - Please read through the Plaster Disclaimer that was signed in the contract documents – this contains vital information regarding your plaster care.
- When traditional smooth plaster is finished, we will immediately begin filling the pool with water. In the event a water truck is needed (country properties usually), the homeowner is responsible for scheduling/providing the water truck(s). Based on how fast the pool is filling, it may require you to set an alarm to turn off the water during the night. It must fill constantly until it reaches the middle of the tile line (hence, waterline tile).
- For pebble applications, it is actually a two day process: install day and acid wash. The install day will look identical to traditional smooth plaster other than adding smoothed glass/pebbles onto surface. It is normal for the surface to look hazy and the pebble/glass to not “pop” at this time. The next day we will return to perform a polish and acid wash which strips that haze off and reveals the beautiful detail. When they are finished, they will immediately start filling the pool identical to instructions for traditional smooth plaster.
- Start-up procedures and instructions are included in the contract, but the pool chemical company should be well versed in new plaster care. The following two pages are the Pool Start Up Log. These needs to be completed during the first 28 days of the plaster curing process. Printable copies may be provided at your request. You may store the completed logs personally or you can email/mail them to admin@diamondpools.net for us to store.
- We are responsible for getting pump(s) up and running when the pool is filled and to check for any above ground leaks in the equipment area. From there, a chemical service company will be required for the [2-week chemical start-up](#) of the plaster curing process, though a minimum of 28 days of very close plaster care is highly encouraged.
- ***EXTREMELY IMPORTANT*** during/after the plaster installation, it is the homeowners responsibility to ensure that no animals/children have access to the pool while filling. It presents a safety hazard for falling into pool/drowning, and any uneven footprints or paws may damage the plaster prior to the curing process. Please ensure that all safety devices are in working order – door alarms, fencing/gates (to prevent anyone from entering backyard unsupervised and accidents occurring), etc. For more information on pool owner safety, please check out [this link](#).

Traditional Smooth Plaster Colors

Check Out More
Photos of the
Finishes
[Here](#)

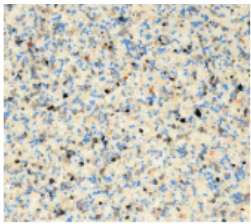
			
Blue Harbor	Deep Blue Harbor	Deep Seafoam Green	Deep Sky Blue
Finish Brand/Series: Plasterscapes	Finish Brand/Series: Plasterscapes	Finish Brand/Series: Plasterscapes	Finish Brand/Seri Plasterscapes
			
Deep Stormy Seas	Deep Turquoise	Seafoam Green	Sky Blue
Finish Brand/Series: Plasterscapes	Finish Brand/Series: Plasterscapes	Finish Brand/Series: Plasterscapes	Finish Brand/Seri Plasterscapes
			
Stormy Seas	Turquoise		

Mini Pebble Plaster Colors



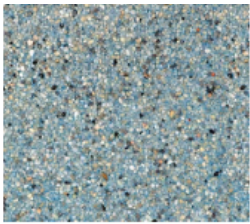
Aqua Blue Mini

Finish Brand/Series:
StoneScapes Mini Pebbles



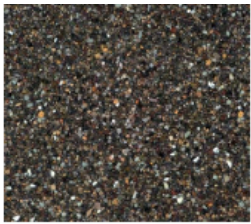
Aqua Cool Mini

Finish Brand/Series:
StoneScapes Mini Pebbles



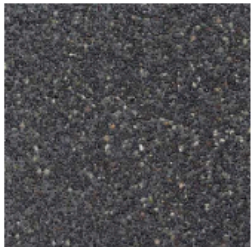
Aqua White Mini

Finish Brand/Series:
StoneScapes Mini Pebbles

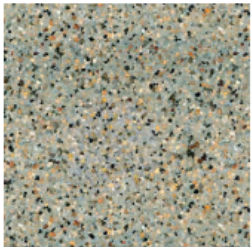


Black Mini

Finish Brand/Series:
StoneScapes Mini Pebbles



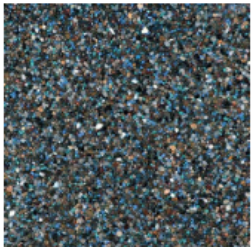
Cameroon Mini



Caribbean Blue Mini



French Gray Mini



Midnight Blue Mini



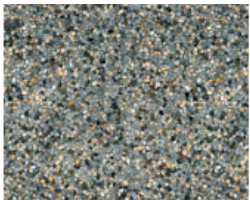
Salt and Pepper Mini

Finish Brand/Series:
StoneScapes Mini Pebbles



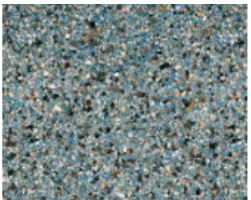
Sand Mini

Finish Brand/Series:
StoneScapes Mini Pebbles



Tahoe Blue Mini

Finish Brand/Series:
StoneScapes Mini Pebbles



Tropics Blue Mini

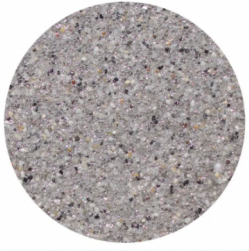
Finish Brand/Series:
StoneScapes Mini Pebbles



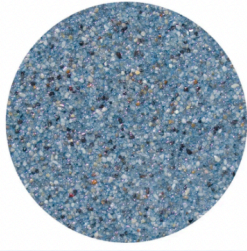
White Mini

Check Out More
Photos of the
Finishes
[Here](#)

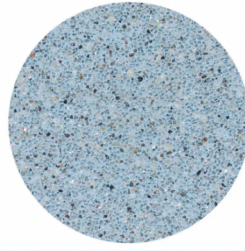
Micro Pebble Plaster Colors



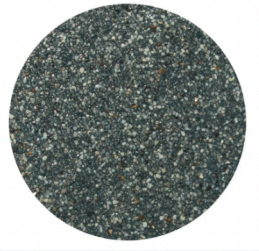
French Grey



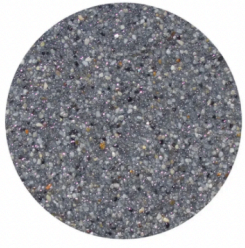
Laguna



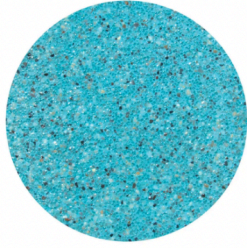
Lakeside



Midnight



Tahoe



Turquoise



White

[Check Out More
Photos of the
Finishes
Here](#)

DATE OF PLASTER _____ **POOL START UP LOG**

DATE OF FILL _____ START UP COMPANY/LICENSE #: _____

POST FILL DAY	TIME CHEMICALS ADDED	CHEMICALS ADDED AND AMOUNT	BRUSH TIME (1)	BRUSH TIME (2)	FILTER RUN PERIOD (HOURS)	ADDITIONAL BRUSHING/NOTES
1						
2						
3						
4						
5						
6						
7						
8						
9						
10						
11						
12						
13						
14						

POOL START UP LOG

IF SALT POOL. DAY SALT ADDED AND AMOUNT -----

POST FILL DAY	TIME CHEMICALS ADDED	CHEMICALS ADDED AND AMOUNT	BRUSH TIME (1)	BRUSH TIME (2)	FILTER RUN PERIOD (HOURS)	ADDITIONAL BRUSHING/NOTES
15						
16						
17						
18						
19						
20						
21						
22						
23						
24						
25						
26						
27						
28						

Automated Pool Covers

Standard Lids: Available in Aluminum or Bronze finish. Not suitable for walking on. Can upgrade to metal walk on lid, which has added stainless steel brackets for support. Would recommend walk on tray lids with coping if considering a walk on lid.



Hidden Lid Option with Coping: Walk on lids to disguise cover housing. Coping stones rest on reinforced brackets - can be removed for cover access as needed. The lead bar and trays can be silver or bronze (black). Requires upgraded 5CM coping or an upgrade to retainers if not previously included in contract.



Fabric Colors: The fabric colors listed are as shown below. Samples can be viewed in person as requested. Most common color is Charcoal Gray (pictured to right).



Cover Color Options

	Navy Blue
	Royal Blue
	Light Blue
	Aqua
	Green
	Charcoal Gray
	Gray
	Tan
	Mocha

Check out more information about covers

[Here](#)

About General Misc.

- Fencing Installation
 - Fencing/gate reinstallation by Buyer or by other professional company at Buyer's expense with completion prior to pre-plaster inspection. Common fence safety requirements include outward swinging (toward the street), self-closing (spring loaded), and interior (in the backyard) latch that is a minimum of 60" height from ground. If requested, Builder will alter gate to satisfy inspections/safety requirements at the cost of \$350.00 as a change order.
- Landscape repairs (sprinklers, drips, etc.).
 - Any sprinkler lines that we hit while excavating will be capped at the point they break to prevent water loss. Diamond Pools is not responsible for repairing sprinkler/drip lines, nor for any landscaping/concrete that is damaged/misplaced in the accessway or surrounding pool area. We will redirect any drainage towards appropriate lines.
- Change Orders
 - Please contact admin@diamondpools.net with any change order requests. Dani will type up the change order request and cost, and will send for esignature. Payment for change order items is due at the time of the completion of the change order.

About Warranty

- **Warranty/Post Construction Information**

- After final inspection has been signed off and the final clean up completed, **Diamond Pools is available for any construction related questions you have by contacting admin@diamondpools.net**. Contacting Trevor directly via text will result in response delays; the fastest way to get assistance is by emailing our office at admin@diamondpools.net and we connect you with the best channel to meet your need.

Hayward Warranty/Registration
(lights, equipment):



Pentair Warranty/Registration
(lights, equipment):



Pool Cover Related Questions, Contact Pool Covers Inc. at (707) 864-6674



Contact



707-451-4748 – Office/Non Urgent Requests/Questions



707-624-6444 – Active Construction



trevor@diamondpools.net



www.diamondpools.net



4199 Suncatcher Ln, Vacaville, CA



admin@diamondpools.net – Post Construction/Warranty



Pool Language Help



Table of Contents

● Pool Shapes

○ Geometric - page 1

○ Freeform - page 1

● Depth Styles

○ Regular - page 2

○ Sports Style - page 2

● Bond Beam - page 3

● Spas

○ Raised Spas - page 3

○ Inline Spas - page 4

● Coping Styles

○ Travertine - page 4

○ Flagstone - page 5

○ Precast - page 5

○ Cantilever - page 5

○ Brick - page 6

● Tile

○ Waterline Tile - page 6

○ Step Tile - page 7

● Accent Wall

○ Top Cap - page 7

○ Faced and Sided - page 7

○ Sheer Descent - page 8

● Baja Shelf - page 8

● Plaster

○ Traditional Smooth - page 9

○ Mini Pebble - page 9

○ Micro Pebble/Micro Fusion - page 10

○ Mottling - page 10

● Other Water Features

○ Bubblers - page 11

○ Deck Jets - page 11

○ Magic Bowls - page 12

○ Spill Over - page 13

○ Vanishing Edge - page 14

● MISC

○ Skimmer - page 15

○ Autofill/Overflow Drain - page 15

● Pool Shapes

Geometric refers to a more rectangular shaped pool. Although that is not always the case, some might have arcs on the ends. Typically it can be interpreted that if you “folded” the pool in half length wise, both halves would look the same.



Freeform is a lagoon or “kidney” shaped pool with multiple custom curves.

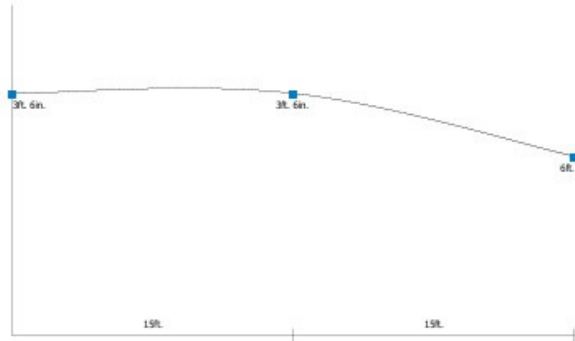


● Depth Styles

Regular depth is the classic run from one side of the pool to the other gradually getting deeperto the deep end.



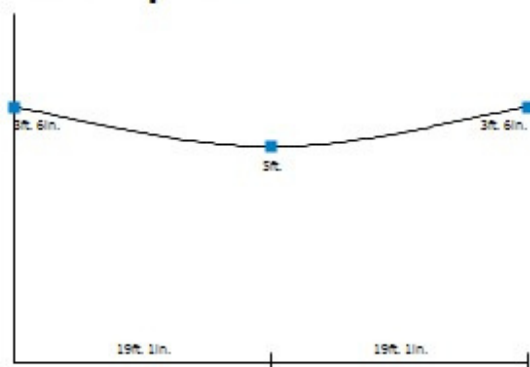
Pool Depth Profile



SportStyle is when the pool's deep end is in the middle of the pool with the shallow end being on the ends (or vice versa)



Pool Depth Profile



● Bond Beam

Bond Beam is a horizontal structural element used around the pool to provide reinforcement and stability, distributing loads and preventing cracking.



● Spas

Raised Spas are just like they sound raised up from the height of the pool, usually 18" but it can vary depending on preference. They generally have decorative stone around it to match landscaping and design style with the **coping** matching the pool **coping**. (see **coping** below)



Inline Spas are spas that are built at the same height as the pool, usually being inside of the pool but doesn't have to be. **Inline spas** can have **coping** along the top of it or **tile** depending on the design preference.



● Coping Styles

Travertine coping is a natural stone cut generally 24" wide x 12" from pool edge to decking. **Travertine** comes in many finishes more commonly with a bullnose finish (single or double) or Eased (modern) edge. This is a popular choice for rectangular pools.



Edge Guide



Double Bullnose



Single Bullnose



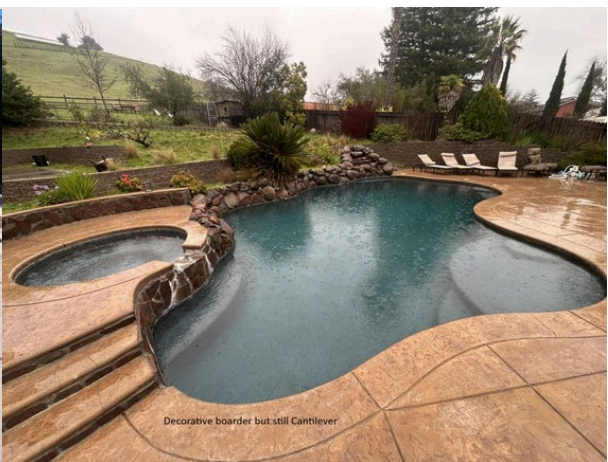
Eased Edge

Flagstone coping is similar to travertine but has a natural rock look with a natural edge. A popular choice for Freeform pools.



Precast coping is concrete that is poured into forms to give the appearance of **travertine** but is not stone, it is concrete.

Cantilever concrete is when the concrete deck is poured continuously and overhangs the edge of the pool bond beam.



Brick coping is typically 4" x 12" or 6" x 12" and can be made of different materials like travertine, traditional brick, or precast concrete like Belgard coping. This is useful for freeform pools, pools with tight corners, and for raised spas or accent walls.



- **Tile**

Waterline tile refers to the tile along the waterline. It is the separation from the plaster to the decking or coping. The water level is supposed to be right in the middle of the waterline tile. It is required because plaster cannot remain exposed to air for long periods of time without damage. Standard sizing is 6"x6", but other sizes may be available, pricing may vary.



Step Tile is the tile that runs along the edge of steps and benches. When laid in a continuous row, 1"x1" or 1"x2" tiles are used. Alternatively, 6"x6" tiles can be cut into diamonds to form a row. **Step tile** is not required for residential pools.



● Accent Wall

Top Cap is the coping on top of the wall. It doesn't have to be the same coping as around the pool but in general it is the same to give a uniform look (see below **Faced and Sided** for pictures)

Faced and Sided refers to having tile or stone on the pool facing side of the wall along with the edge sides. The back of the wall (facing the fence) is usually left as exposed gunite. The tile can be the same as the **waterline tile** to give it a more uniform look or switch it up to have a more unique style.



Sheer Descent is the water feature many refer to as a “waterfall”. **Sheer descent** comes standard in 3’ size but is available in 1’, 2’, 4’ and 6’ as well.



● **Baja Shelf**

Baja shelf otherwise known as “cabo shelf” “tanning ledge” “sun shelf” or “extended step” is the extra large step in the pool commonly used for young kids playing or pool lounge chairs. Options come with an umbrella sleeve in the middle of them for shade near the shallower end of the pool. **Baja shelves** range usually between 9” deep to 18” based on your preference.



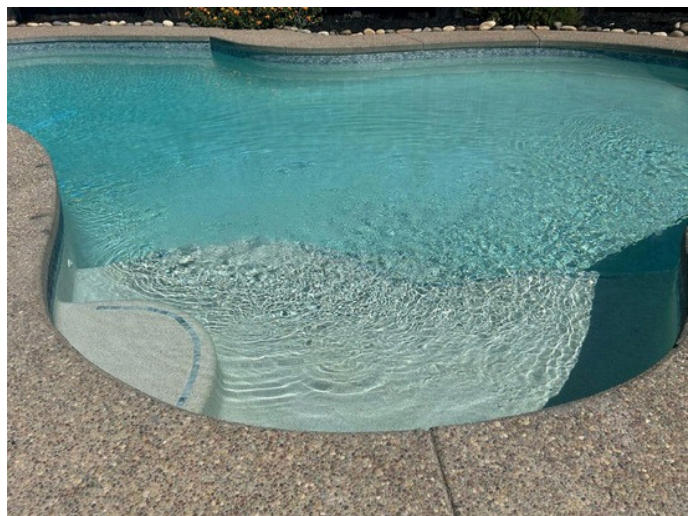
● Plaster

Traditional Smooth Plaster is the normal plaster you'll find in a community or public pool. It is the smoothest of all the plasters and comes in a variety of colors. **Traditional smooth plaster** generally lasts 7-10 years before needing to be refinished. **Mottling** is something

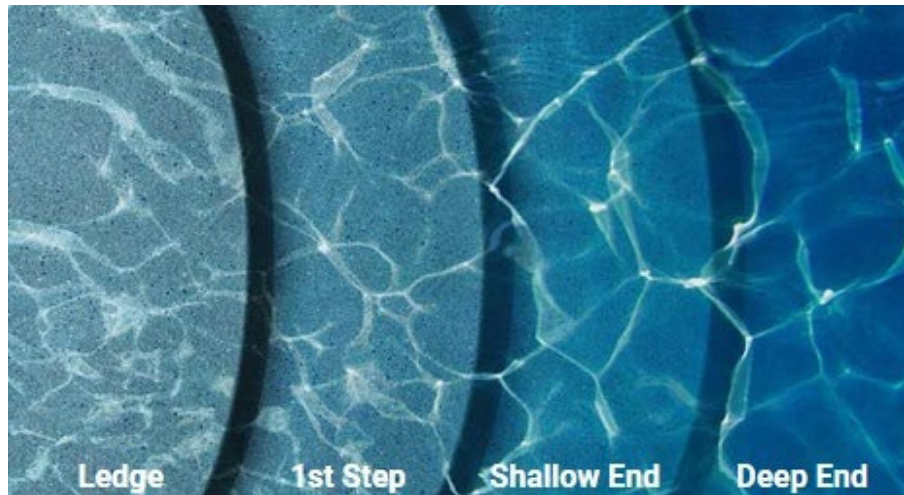
that happens with all plasters but it is most noticeable with colored **traditional smooth plaster**. (see below for **Mottling**)



Mini Pebble Plaster commonly referred to as “Pebble Tec”, is plaster mixed with polished stone or aggregates. “Pebble Tec” is merely one of the brand names and not the plaster itself. **Mini Pebble** is not the pebble finish from the 80s and 90s that was really rough on your feet. **Mini Pebble** is much smoother than the older pebble finish. While it is more expensive than **traditional smooth plaster**, its lifespan is doubled with proper care without needing to be replaced. **Mini Pebble** also comes in a wide variety of colors with different plaster colors and colored stone.

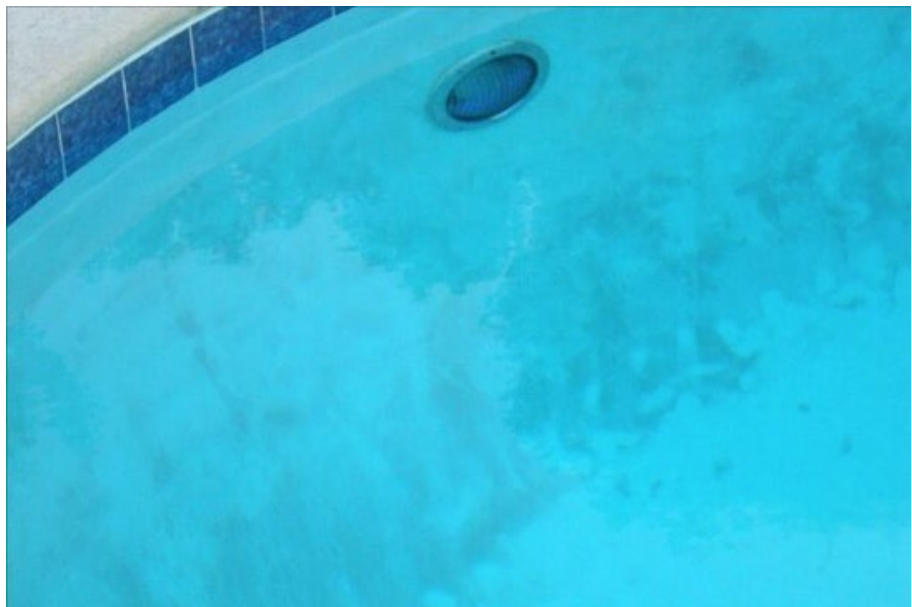


Micro Pebble Plaster or **Micro Fusion** is the next upgrade above mini pebble. With all the benefits of **mini pebble** it is the closest in smoothness to the **traditional smooth plaster**.



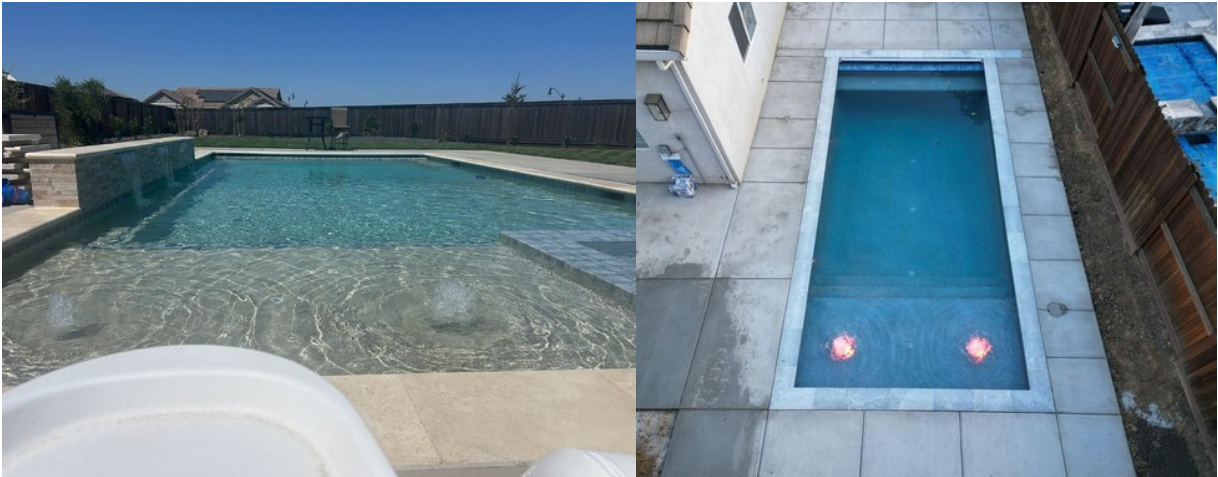
Mottling refers to the discoloration of the pool plaster, often appearing as blotchy areas of color. This is most notable in **traditional smooth plaster** with color dye added to it. Although it does happen in **mini pebble** and **micro pebble plaster** as well it is not noticeable due to the stone and aggregate in the plaster.

Mottling is primarily an aesthetic concern and does not affect the pools durability.



● Other Water Features

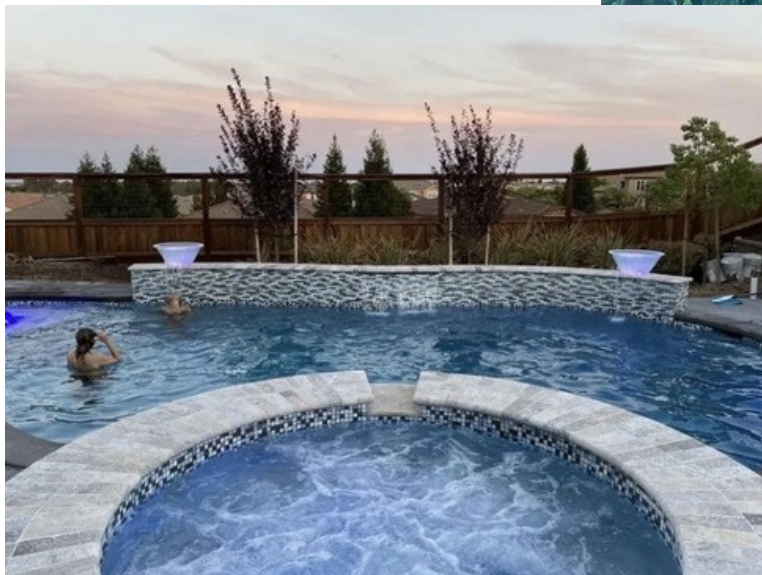
Bubblers are a water feature that are usually placed in the surface of the baja shelf that spouts water over the surface of the water from 1”-6”. These can come as regular **bubblers** or **LED bubblers** as an upgrade. **LED bubblers** are just bubblers with a changing light effect included with them.



Deck Jets are fountains placed around the pool in the decking to shoot a small constant stream of water into the pool. They can be adjusted to swivel and have higher or lower arcs.



Magic Bowls are the bowls that sit on top of pillars and spill into the pool. Some options come with fire, requiring a gas line run to them, or LED lights which require electrical lines.



Spill Over is not so much a water feature as it is standard with spas when they are connected to a pool. The **spill over** is a small 2'-3' cut out of the edge of the spa that's tiled and lets water flow from the spa to the pool creating a "waterfall feature". These come standard with spas that are connected to pools because spas are generally not built with a **skimmer** basket (see **skimmer** below). The surface debris is pushed through the **spill over** into the pool to be caught by the pool **skimmer**. **Spill overs** can be covered with a **coping** piece or just left uncovered. Or for **inline spas** it is an option to **tile** the entire surface to make the entire pool edge a **spill over**.

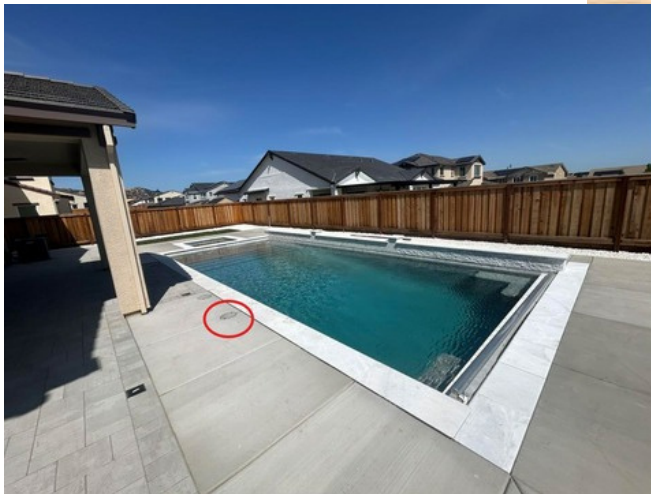


Vanishing Edge is usually for pools built on the side of a hill to give the appearance the pool just drops off leaving a view into the valley. These require a water basin to catch any water that spills over the edge to pump it back into the pool.



● MISC

Skimmer is the cut out in the side of the pool that traps floating debris into the basket inside the **skimmer** housing. The **skimmer** cover is about 2' from the pool edge and is laid flush with the decking where you can access the bucket to clean it. Larger pools usually have multiple skimmers. While most **skimmer** covers are plastic, there is an option to have a cover poured with concrete to match the surrounding decking.



Autofill/Overflow Drain are installed in close proximity to the skimmer. The **Autofill** keeps the pool at the water level it is supposed to be at. It has a floating device that triggers on when the water level gets too low, similar to a toilet float. The **overflow drain** is a small hole in the side of the **autofill** housing that allows water to flow out to the drainage system when the water gets too high during heavy rains, preventing your pool from overflowing and potentially causing damage to your yard or house.

