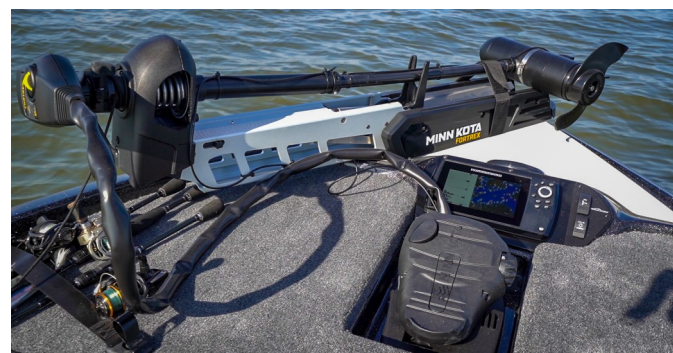
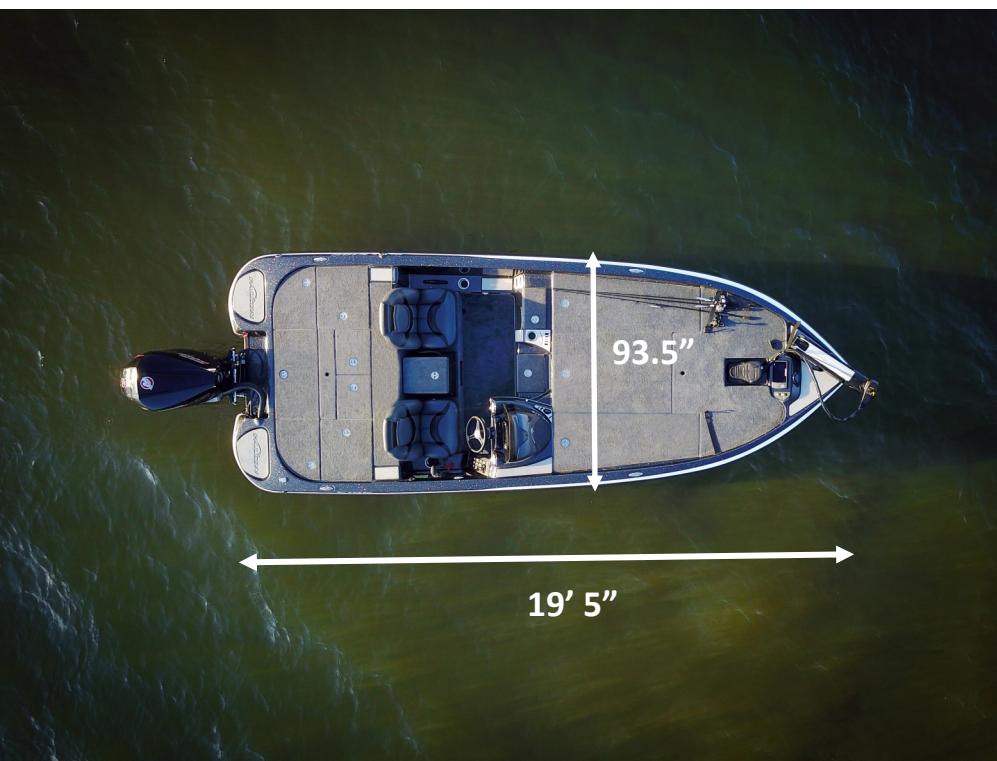




F195



FALCON
BOATS



Go Fish!

F195 STANDARD FEATURES



BOAT FEATURES

- 100% Composite Construction
- Console Panel Capable of Flush Mounting 12" Electronics
- Sea Star Pro Series Hydraulic Steering W/ Tilt Helm
- New Style Steering Wheel
- Seastar Trim At The Helm
- Adjustable Jack Plate
- Foot Throttle w/Adjustable Slide
- Humminbird Helix 7 Chirp MDI GPS Bow
- Humminbird Helix 7 Chirp GPS Helm
- Full Instrumentation
- High Quality Stainless Steel Latches
- Passenger Rod Ramp
- Recessed Trolling Motor Foot Pedal
- 2 Auxiliary 12v Power Outlets
- Passenger Grab Handle & Foot Rest/Brace
- Stainless Steel Pull Up Cleats
- Rod Buckles
- LED Courtesy Lights
- LED Compartment Lights in all compartments
- LED Livewell Light
- Port and Starboard Rod Organizers
- Custom Seats
- Center Console Storage
- Tool Storage with Measuring Board
- 1 Fold Down Seat/1 Bike Seat & Power Pro Pole
- Insulated Cooler
- Exterior Rod Access (ERA) Front Rod Boxes
- Custom Windshield(s)
- Gas Lid Assists
- 3 Bank Battery Charger
- Minn Kota Maxxum 70 SC
- Bow Panel With Switches
- Flowrite Remote Drain Plug
- Flowrite Automatic Livewell valve
- Livewell Recirculation System
- Livewell Pump Out System
- LED Livewell Lights
- 1100 GPH Auto Bilge Pumps
- Tri Fold Rear Lids

CUSTOM TRAILER

- Single Axle Trailer w/Disc Brakes
- Tubular Steel Frame
- GatorHyde Polyurea Coating
- Aluminum Step Pads
- Custom Aluminum Wheels w/Radial Tires
- Spare Tire Mount
- Matching Spare Tire
- OEM Grade Vault Hybrid Lubrication System
- Swing Tongue
- LED Trailer Lights
- LED Back Up Lights
- 7 Pin Coiled Plug
- LED Back Up Lights
- Double Bunks

***Prices and standard features are subject to change without notice.**

*** Photos shown may include upgraded items.**

AVAILABLE POWER—200 MAX HP



SPECS

Length 19' 5"
Beam 93 ½"
Width on Trailer 95 ½"
Fuel Capacity 40 GAL
Livewell Capacity 34 GAL
Approximate Dry Weight 1675 LBS
Length on trailer – towing length 25'
Engine down with tongue folded 22'10"
Engine down, turned, with tongue folded (shortest length) 22'9"

Find a Falcon Dealer

WWW.FALCONBASSBOATS.COM