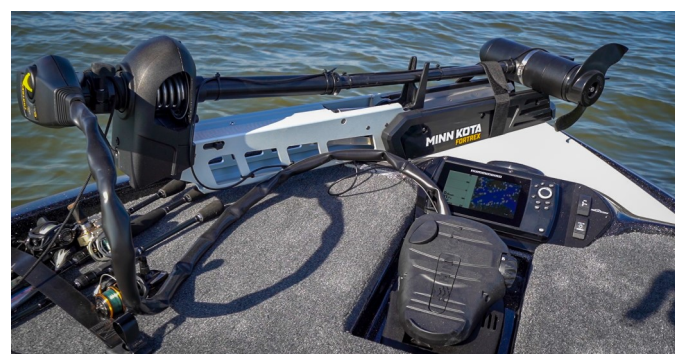




F205



FALCON
BOATS



Go Fish!

F205 STANDARD FEATURES



BOAT FEATURES

- 100% Composite Construction Including Stringers & Transom
- Console & Bow Panel Capable of Flush Mounting 12" Electronics
- Sea Star Pro Series Hydraulic Steering w/ Tilt Helm
- Seastar Trim At The Helm
- Adjustable Jack Plate
- Foot Throttle w/ Adjustable Slide
- Full Instrumentation
- Humminbird Helix 9 CHIRP DS GPS Bow
- Humminbird Helix 9 CHIRP MSI GPS Helm
- High Quality Stainless Steel Latches
- Passenger Rod Ramp
- Recessed Trolling Motor Foot Pedal
- Convenience Cleat - Ability To Tie Up While In Driver's Seat
- 2 Auxiliary 12v Power Outlets
- Passenger Grab Handle & Foot Rest/Brace
- Passenger Side Storage Box - holds 2 Plano 3600's
- Stainless Steel Pull Up Cleats
- RodBuckle Retractable Rod Holders
- LED Courtesy Lights
- LED Compartment Lights In Every Compartment
- LED Livewell Light
- Port and Starboard Rod Organizers
- Custom Seats
- Center Console Storage with Cup Holders & Tool Storage
- Tool Storage with Measuring Board
- 1 Fold Down Seat/1 Bike Seat & Power Pro Pole
- Insulated Cooler
- Exterior Rod Access (ERA) Front Rod Boxes
- Custom Windshield(s)
- Gas Lid Assists
- Minn Kota Fortrex 112 36v 45"
- Four Bank Battery Charger
- Onboard Charger Receptacle
- Bow Panel With Switches
- Flowrite Remote Drain Plug
- Flowrite Automatic Livewell valve
- Livewell Recirculation System
- Livewell Pump Out System
- Two 1100 GPH Auto Bilge Pumps
- Tri Fold Lids for Access to Rear Battery Compartments & Pumps

CUSTOM TRAILER

- Tandem Axle Trailer w/Disc Brakes
- DuPont Paint Over GatorHyde
- Aluminum Step Pads
- Aluminum Fender Guards
- Custom Aluminum Wheels w/Radial Tires
- Ratchet Tie Downs
- OEM Grade Vault Hybrid Lubrication System
- Swing Tongue
- Matching Spare Tire
- LED Trailer Lights
- LED Back Up Lights
- 7 Pin Coiled Plug
- F2 Jack Stand
- F2 Winch

***Prices and standard features are subject to change without notice.**

*** Photos shown may include upgraded items.**

AVAILABLE POWER—250 MAX HP



SPECS

Length – 20' 4"
99" Beam
Fuel Capacity 50 GAL
Approximate Dry Weight 1890 LBS
Length on trailer – towing length 25'11"
Engine down with tongue folded 23'2 ½"
Engine down, turned, with tongue folded (shortest length) 23'1"

Find a Falcon Dealer
WWW.FALCONBASSBOATS.COM