

Name _____

Music Fundamentals
Midterm
Spring Term 2021

Part I. Terms and Definitions (*provide examples when necessary to support your answer*)

Dotted notes

Name the accidentals and what do they do to the note

Name the order of sharps and flats

Circle of 5ths

Time Signature

Tied notes

Major Scale

Treble clef identifies which note on the staff

Bass clef identifies which note on the staff

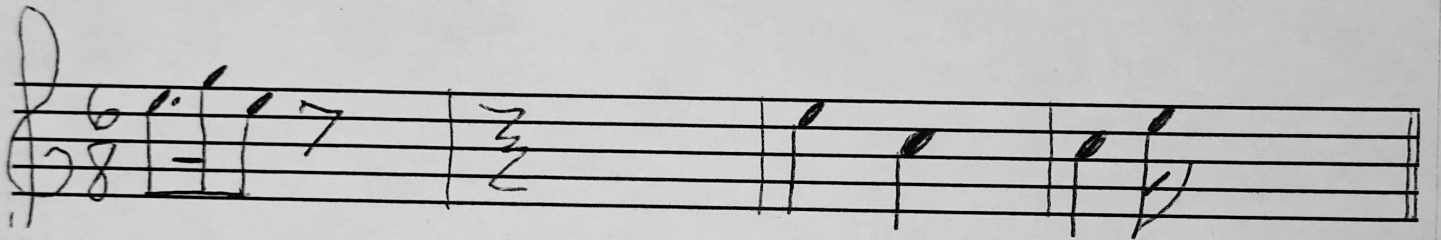
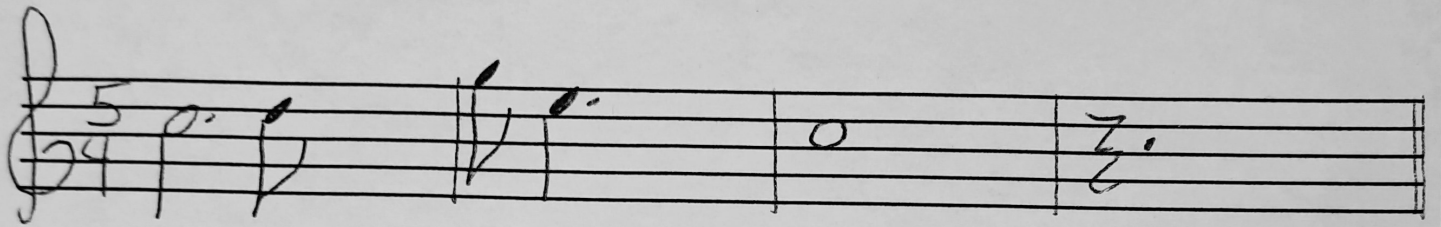
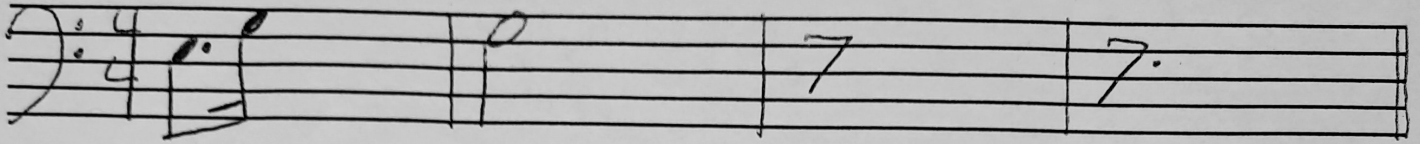
Part II. Identify pitches

The image shows a handwritten musical score on a grand staff (treble and bass clefs). The notation is as follows:

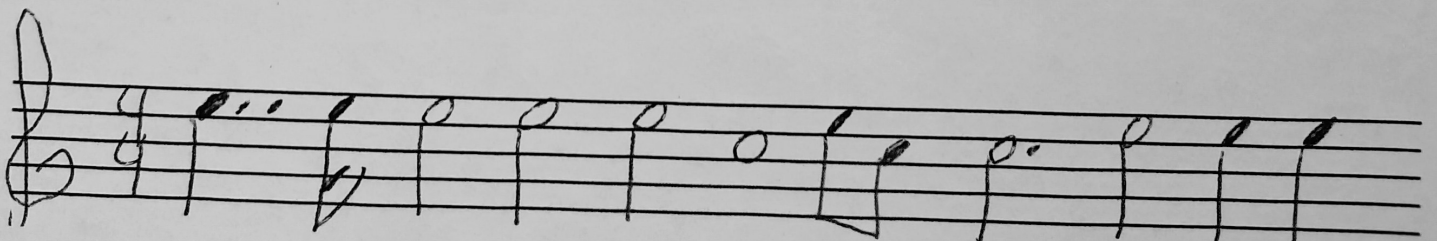
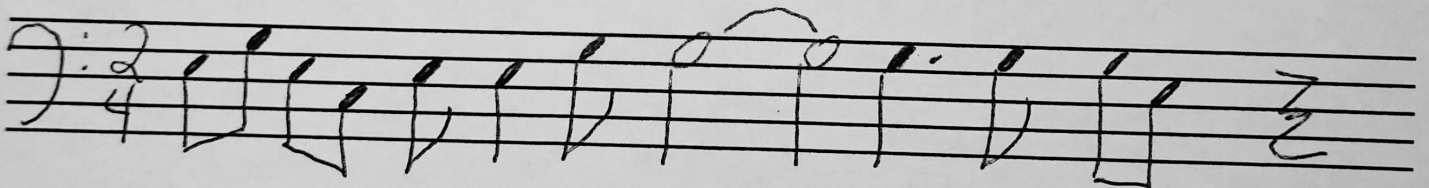
- Measure 1:** Treble clef, quarter note G4 with a sharp (#) accidental. Bass clef, quarter note G2 with a flat (b) accidental.
- Measure 2:** Treble clef, quarter note B4 with a double sharp (##) accidental. Bass clef, quarter note B2 with a double flat (bb) accidental.
- Measure 3:** Treble clef, quarter note E5 with a natural sign (no accidental). Bass clef, quarter note E2 with a natural sign (no accidental).
- Measure 4:** Treble clef, quarter note F5 with a natural sign (no accidental). Bass clef, quarter note F2 with a flat (b) accidental.
- Measure 5:** Treble clef, quarter note A4 with a sharp (#) accidental. Bass clef, quarter note A2 with a natural sign (no accidental).
- Measure 6:** Treble clef, quarter note C5 with a natural sign (no accidental). Bass clef, quarter note C2 with a sharp (#) accidental.

Part III. Rhythm

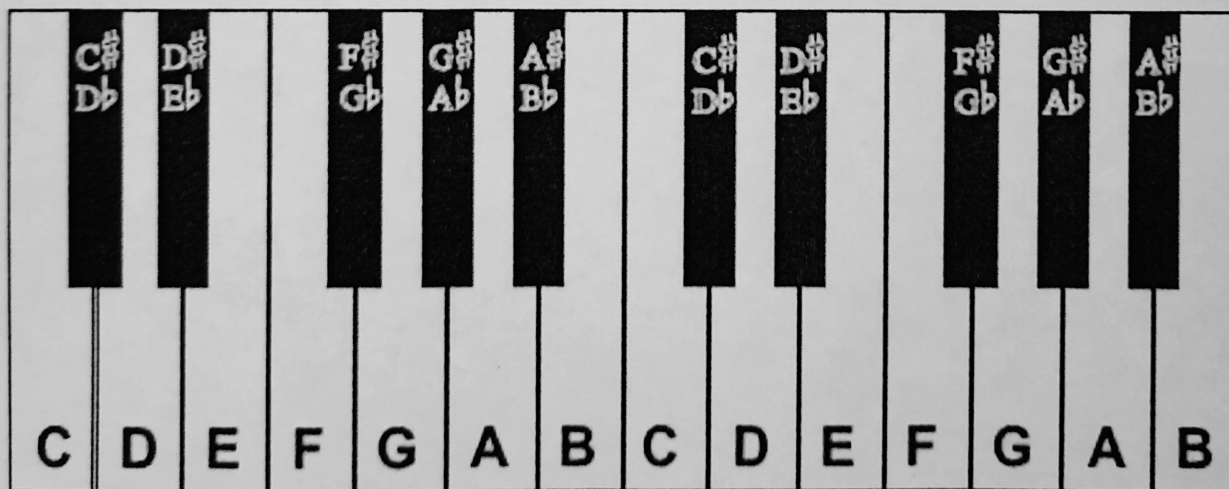
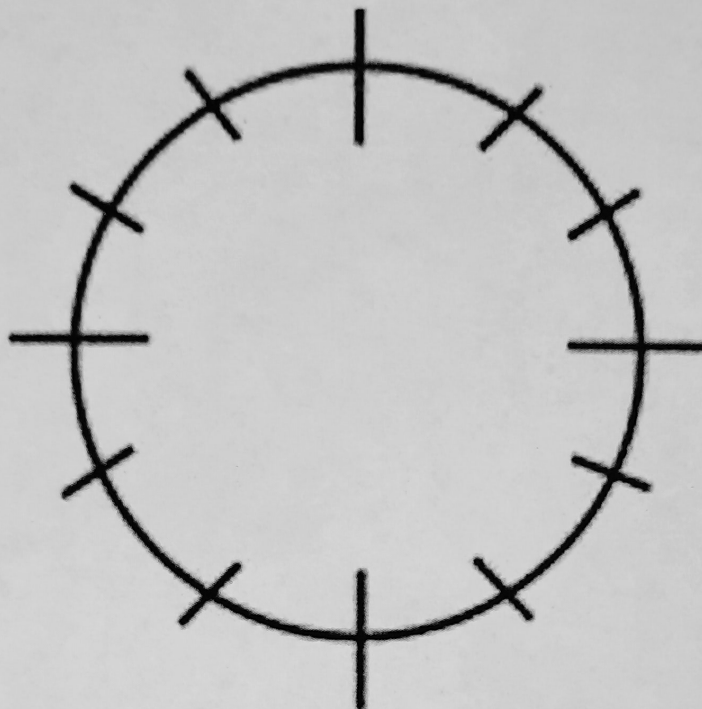
a. Complete the following measures



b. Draw in the missing bar lines



IV. Complete the Circle of 5ths



V. Major Key Signatures

a. Identify the following Major keys

Three measures of a bass clef staff showing key signatures: 1. Two flats (Bb, Eb) for F major. 2. One sharp (F#) for C# major. 3. Three sharps (F#, C#, G#) for D major.

Three measures of a treble clef staff showing key signatures: 1. Two sharps (F#, C#) for D major. 2. Two flats (Bb, Eb) for F major. 3. Three flats (Bb, Eb, Ab) for C major.

b. Write in the following Major key signatures

Four measures of a bass clef staff with empty lines for key signatures. Below the staff are the labels: Ab, B, G, C#.

Four measures of a treble clef staff with empty lines for key signatures. Below the staff are the labels: Cb, E, Db, F#.