

Name _____

**PRACTICE
ONLY**

**Music Fundamentals
Midterm
Spring Term 2020**

Part I. Terms and Definitions *(provide examples when necessary to support your answer)*

Bass Clef

Key signature

Octave

Circle of 5ths

Time Signature

Treble Clef

Major Scale

Dotted notes

Part II. Identify pitches

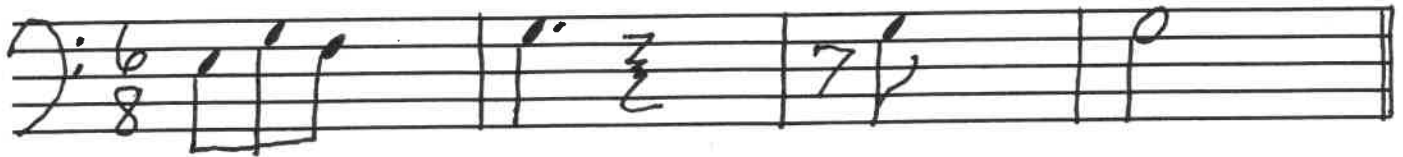
A handwritten musical score on a grand staff (treble and bass clefs). The notation includes various notes and accidentals with handwritten labels:

- Treble Clef (top staff):**
 - Measure 1: G4 (labeled 'f'), A4 (labeled 'x.p'), B4 (labeled '#p')
 - Measure 2: C5 (labeled 'bb'), D5 (labeled 'b'), E5 (labeled 'p')
- Bass Clef (bottom staff):**
 - Measure 1: F3 (labeled 'f'), G3 (labeled 'b'), A3 (labeled 'p')
 - Measure 2: B3 (labeled '#p'), C4 (labeled 'p'), D4 (labeled 'p'), E4 (labeled '#p')

Vertical lines separate the measures. A double bar line is present at the end of the second measure in both staves.

Part III. Rhythm

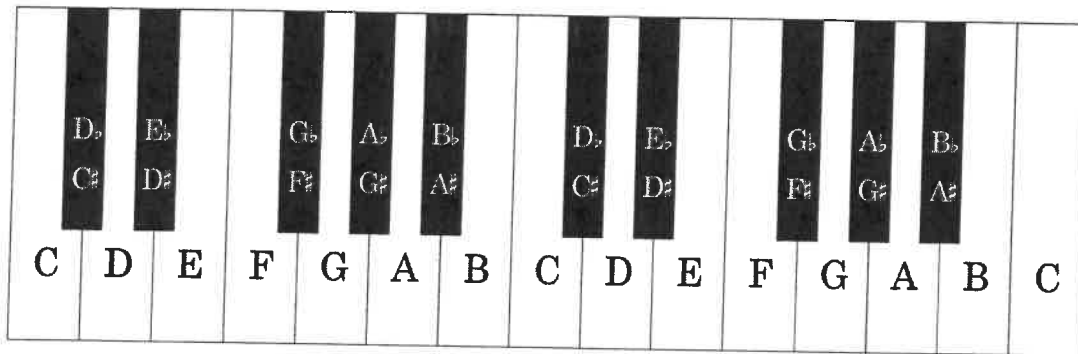
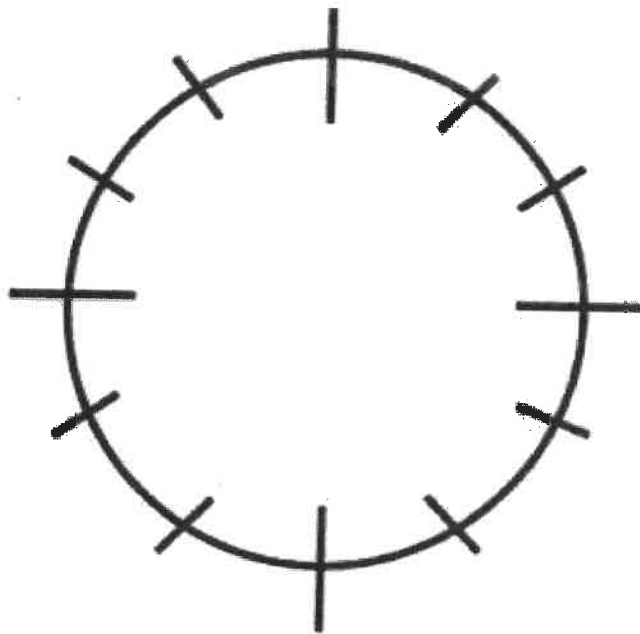
a. Complete the following measures



b. Draw in the missing bar lines

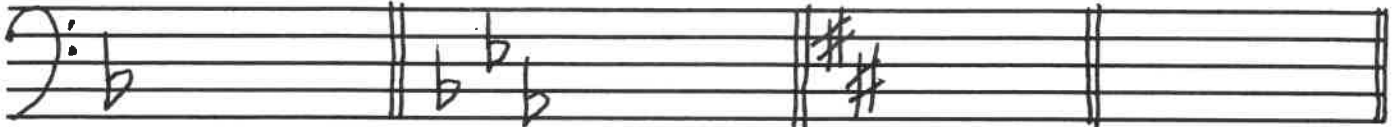


IV. Complete the Circle of 5ths



V. Major Key Signatures

a. Identify the following Major keys



b. Write in the following Major key signatures

