

K. B O R M A N N

I have studied the world of design through a variety of lenses. After living and **traveling through Europe** as a **fine art student**, I witnessed the way **creativity** could be artfully **infused** into virtually every aspect of our cultures. I am inspired by this notion and live with a **constant thirst to create in new contexts.**

My work as an artist directly informs my approach as a designer and architect. I take my process of creating **engaging portraits** and apply this to the built environment. The outcome is a **personalized space** that celebrates its occupants. Like portraiture, the built environment **conveys a story** or understanding of our day-to-day lives. Through the union of artistry and architecture, I design spaces to elicit an **empowering reflection** of its inhabitants – a composition that captures unique personas, **framed in timeless style.**

I earned my BA in **Studio Art and Art History** from Ursinus College and my MS in **Interior Architecture and Design** from Drexel University.

PROJECT 1: CORPORTATE OFFICE: [current confidential] NEW JERSEY

PROJECT 2: CORPORTATE OFFICE: AXA XL INSURANCE COMPANY, MANHATTAN

PROJECT 3: CORPORTATE OFFICE: NFP INSURANCE COMPANY, MANHATTAN

PROJECT 4: CORPORTATE OFFICE: COMMON SPIRIT HEALTH, PHOENIX, ARIZONA

PROJECT 5: AMENITY SPACE, RESIDENTIAL BUILDING, MANHATTAN

PROJECT 6: ARTWORK

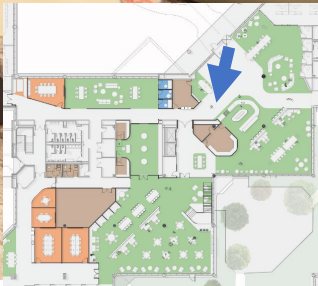
C O N T E N T

PROJECT 1: CORPORATE OFFICE: [current confidential], NEW JERSEY



Multi-level North American headquarter office fit-out located in central New Jersey. Ongoing involvement with this project. I organized programming workshops, schematic space planning, reflected ceiling plan design, revit modeling and creation of renderings, material palette development, coordination with consultants.

FIRST FLOOR LOBBY



FIRST FLOOR LOBBY



FIRST FLOOR LOUNGE



FIRST FLOOR CAFE



FIRST FLOOR TOWN SQUARE



SECOND FLOOR CO-WORKING LOUNGE



SECOND FLOOR EXECUTIVE OFFICE



SECOND FLOOR PREFUNCTION LOUNGE



SECOND FLOOR IT HELP DESK



PROJECT 2: CORPORATE OFFICE, AXA INSURANCE COMPANY, MANHATTAN



80,000 square foot corporate office fit-out located in a downtown Manhattan high-rise. Involved in this project from start to finish, I curated material palettes, space planned a high-end luxury open-office design, constructed a three dimensional building model, and presented designs through my interactive, realistic renderings.



SCAN HERE



PERKINS —
EASTMAN





SCAN HERE



PERKINS —
EASTMAN





PERKINS
EASTMAN



SCAN HERE



PERKINS +
EASTMAN





SCAN HERE

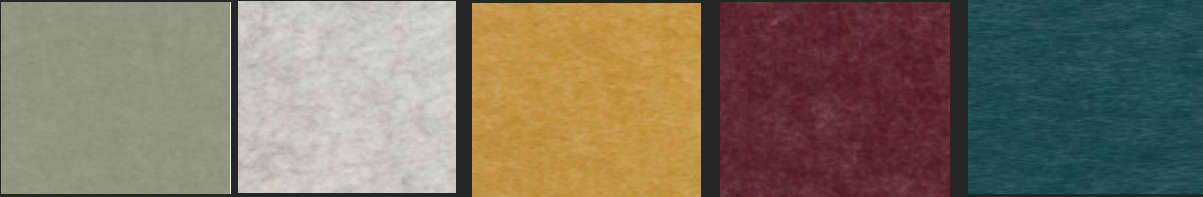


PERKINS —
EASTMAN

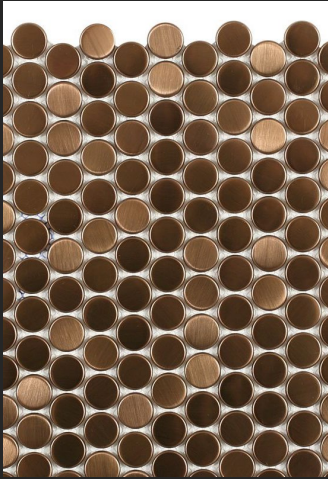


MATERIALALITY

WARM AND INVITING



KIREI ACOUSTICAL FELTS, PHONE ROOMS, MEETING ROOMS



METAL COPPER STAINLESS 3/4" PENNY ROUND MOSAIC TILE, CAFÉ LEVEL 40



MOZ DESIGNS, PERFORATED BLACK METAL, RECEPTION, NW PANTRY



GARDEN ON THE WALL, HELP DESK, RECEPTION LOBBY



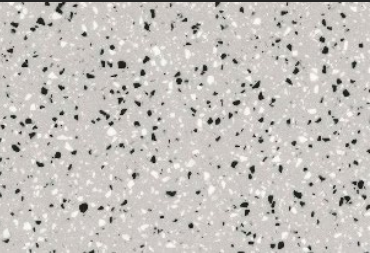
TAMBORA MERU WALNUT, PANTRY ISLANDS



CUSTOM AREA RUG, LOUNGES THROUGHOUT



LANCASTER DOVE CERAMIC TILE, TILEBAR



CAESERSTONE 4601 FROZEN TERRA, PANTRY COUNTERTOPS



MOORE & GILES LEATHER, UPHOLSTERY FOR FURNITURE



ACOUSTICAL SHEERS: CARNEGIE PRATO 15, ROUND MEETING SPACES



POLISHED CONCRETE FLOORING THROUGHOUT



METAL MESH BETWEEN GLASS LAYERS, RECEPTION LOBBY, WORK LOUNGE



NYDREE WOOD FLOORING, HELP DESK AND 41ST FLOOR




BENTLEY MILLS CARPET, GALLERY EYES, SNEAKERS, 470075

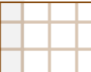



BENTLEY MILLS CARPET, BURNISH, BORREGO SPRINGS, 402921


LIGHTING CONCEPTS


GRAPHICS LEGEND

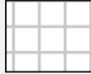
WOOD PLANK

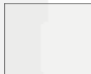
WOOD GRID

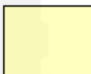
K13 ACOUSTIC SPRAY


GYP


METAL

2X2 ACT

ACOUSTIC PANELS

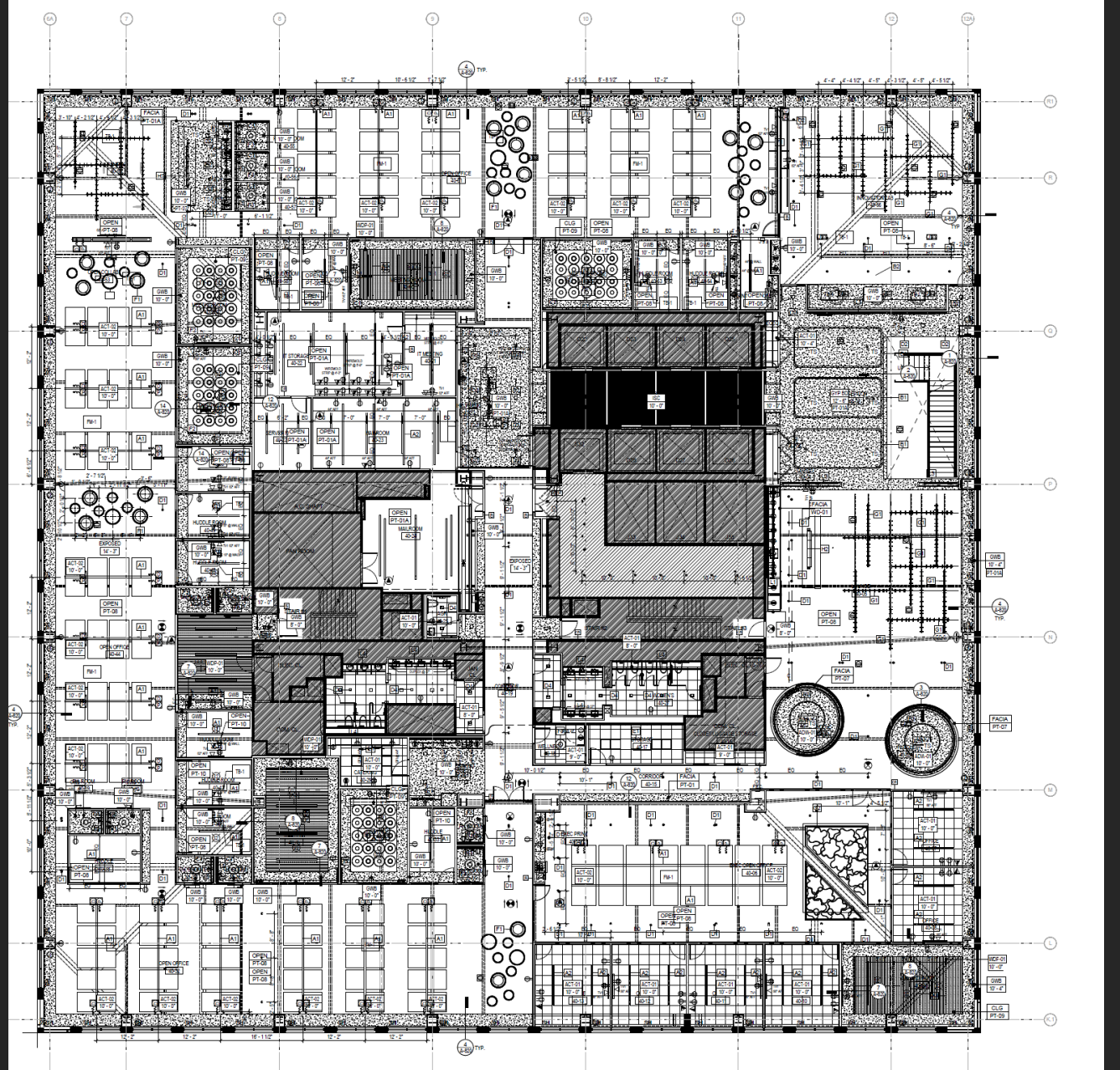
ILLUMINATED STRETCHED CEILING

CURTAINS

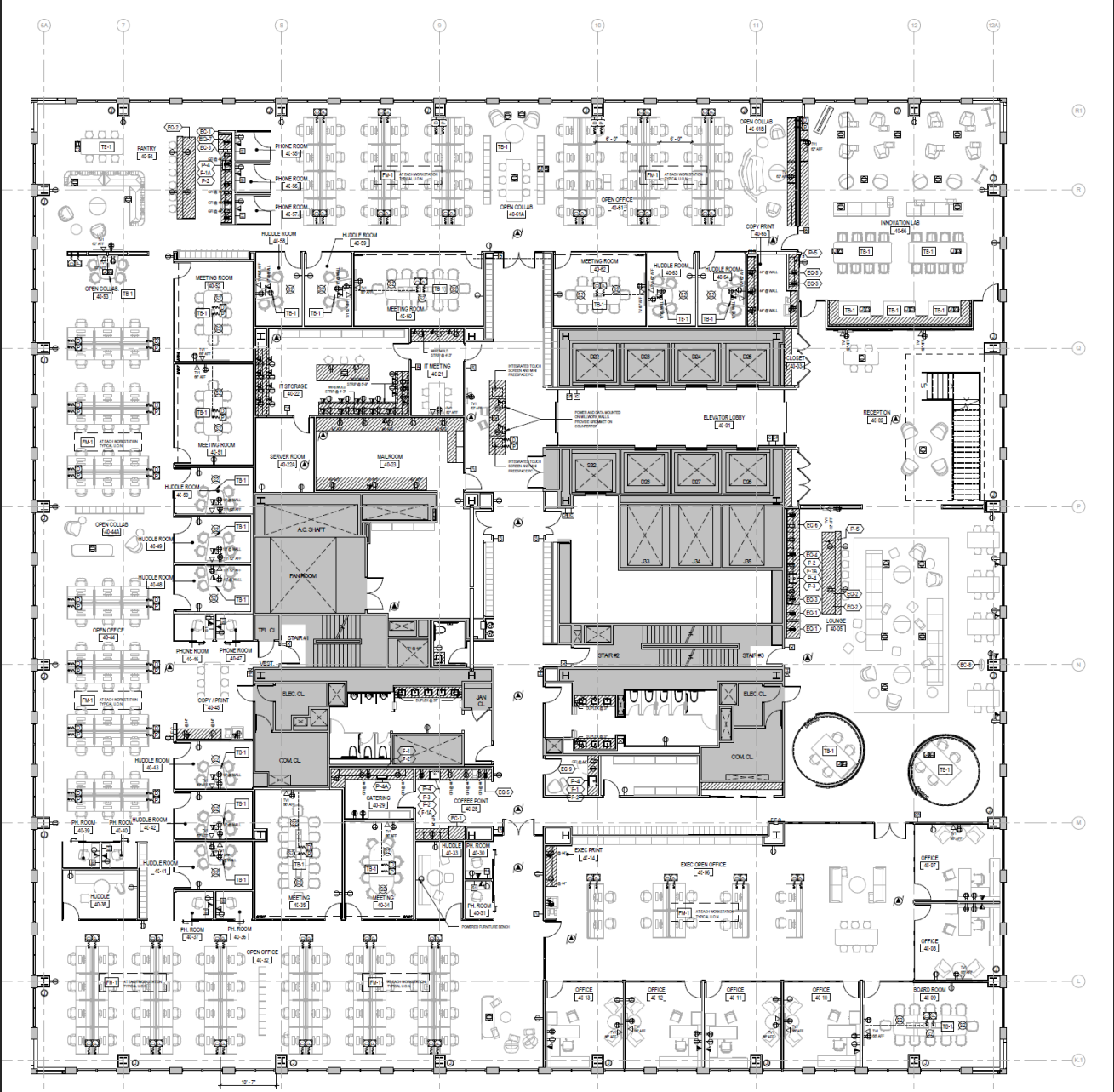
LIGHT FIXTURES



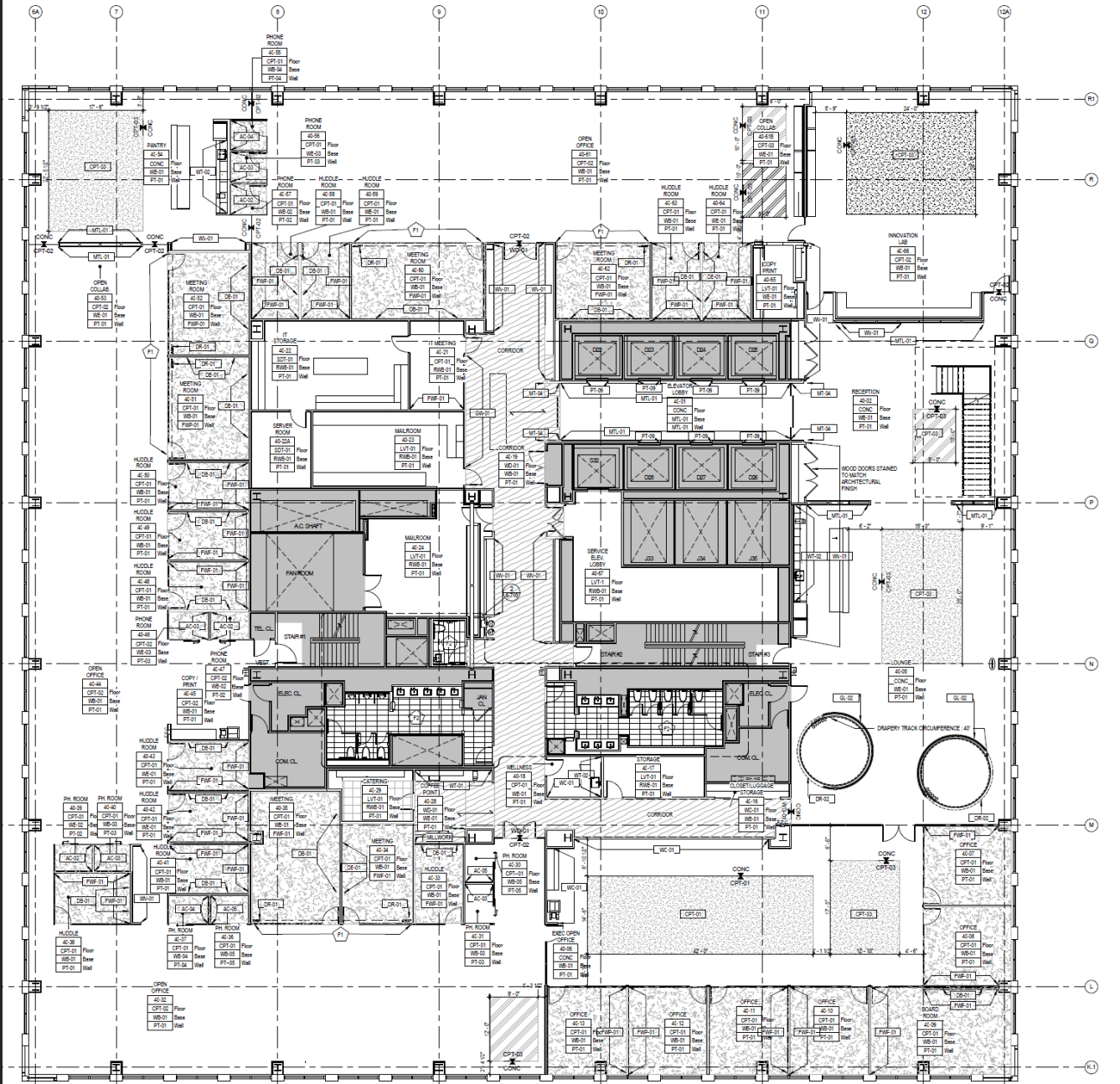
REFLECTED CEILING PLAN



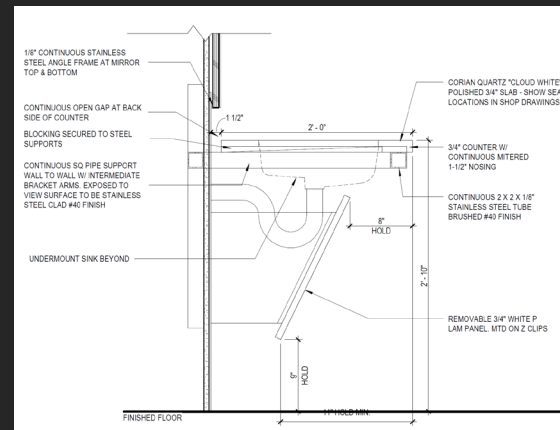
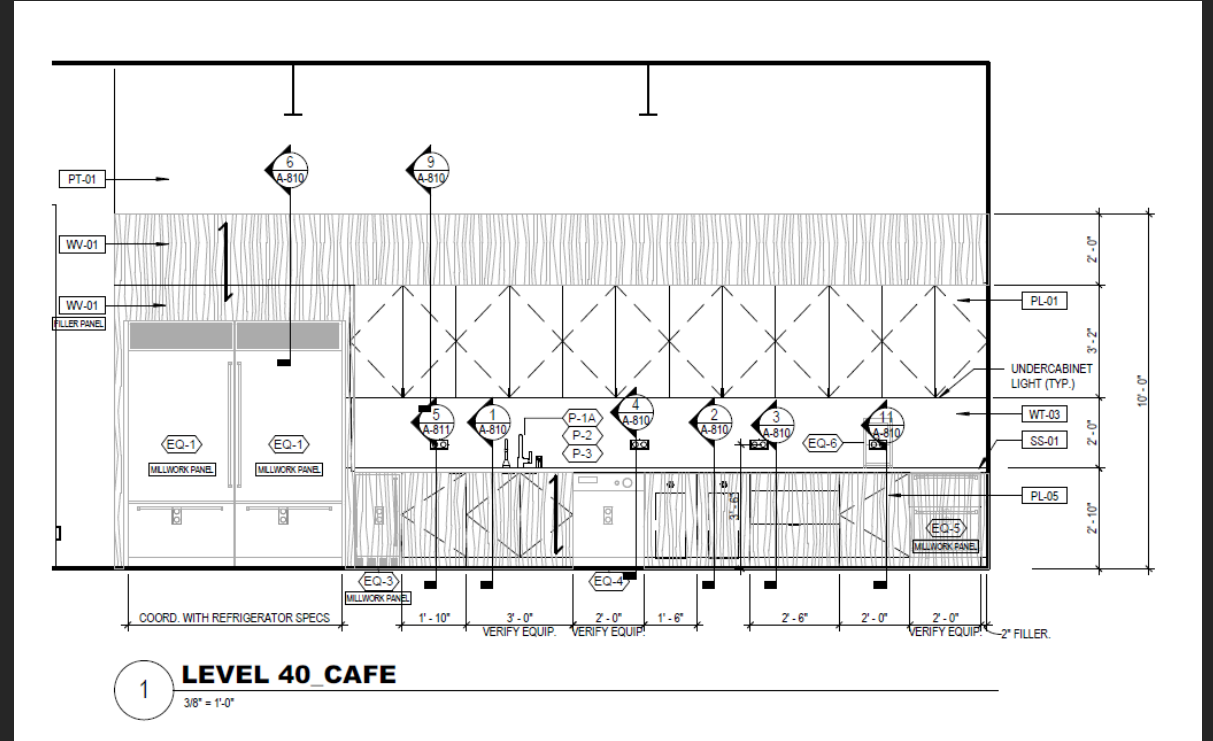
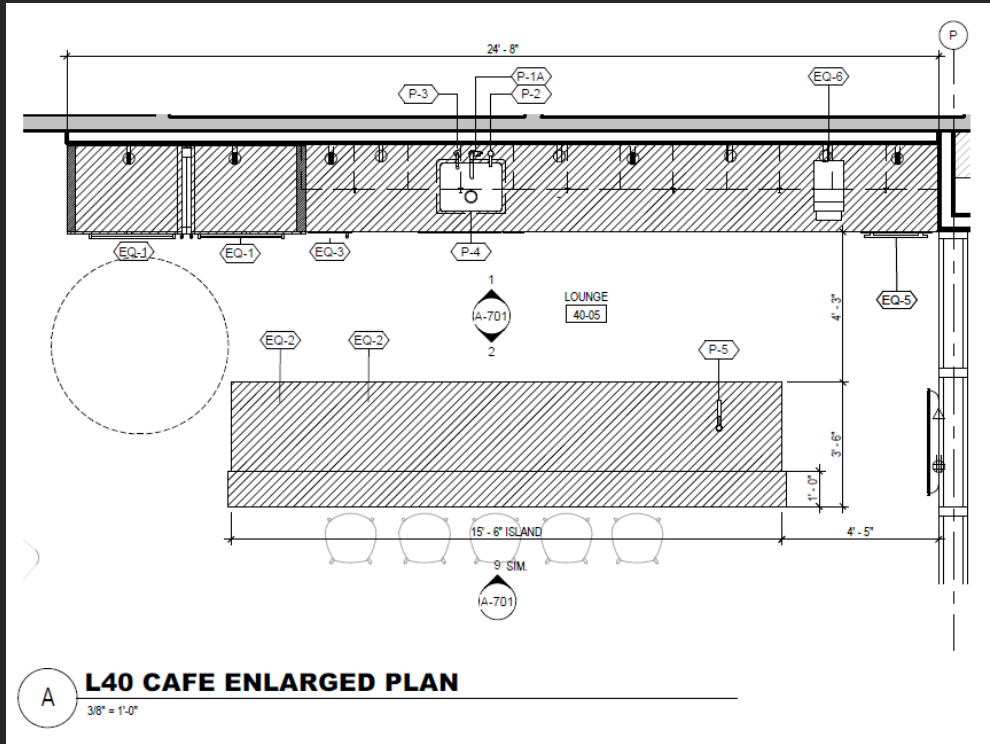
POWER AND COMMUNICATIONS PLAN



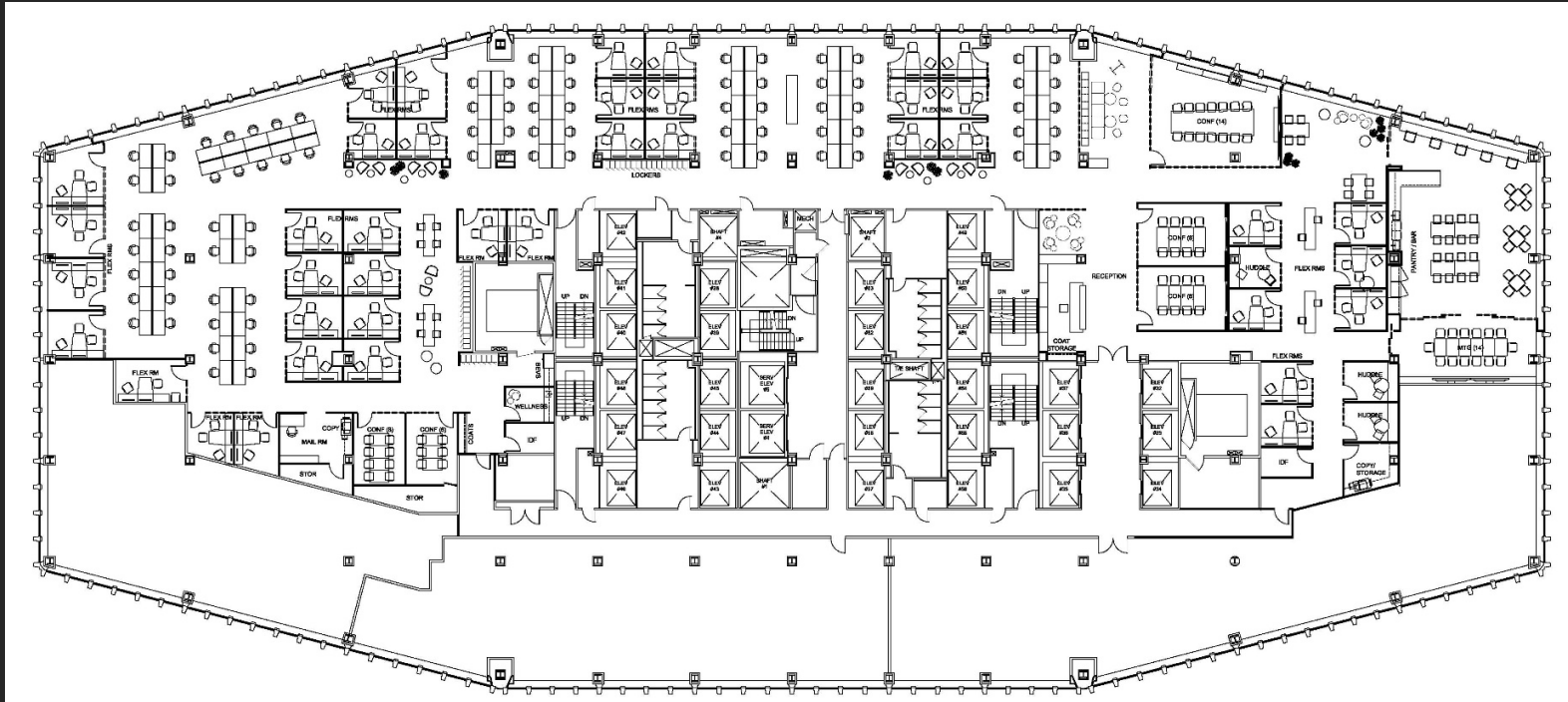
FINISH PLAN AND SCHEDULE

[illegible]

ENLARGED PLANS, ELEVATIONS AND DETAIL DRAWINGS



PROJECT 3: CORPORATE OFFICE: NFP INSURANCE COMPANY, METLIFE BUILDING MANHATTAN



40,000 square foot corporate office fit-out located in the MetLife Building. Involved in this project from start to finish, I curated material palettes to capture the company's brand, developed new concepts for space planning, routinely presented and interacted with clients at face to face meetings, and pitched designs through high-end rendered visuals.

RECEPTION ENTRY SEQUENCE



LARGE MEETING PREFUNCTION



LARGE MEETING ROOM



STAFF LOUNGE & PANTRY



STAFF LOUNGE & PANTRY



OPEN WORKSPACE



COLLABORATION BOOTHS

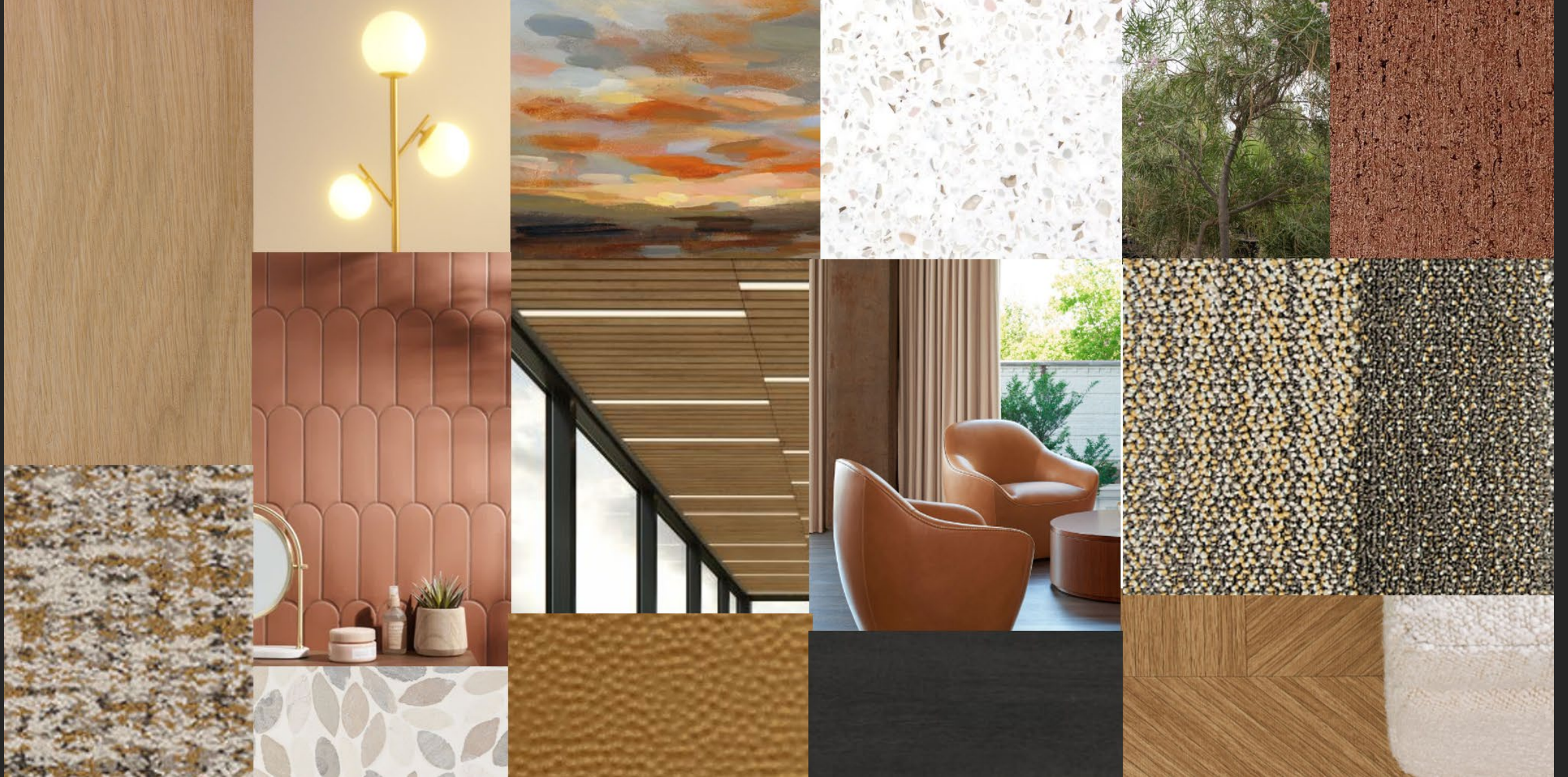


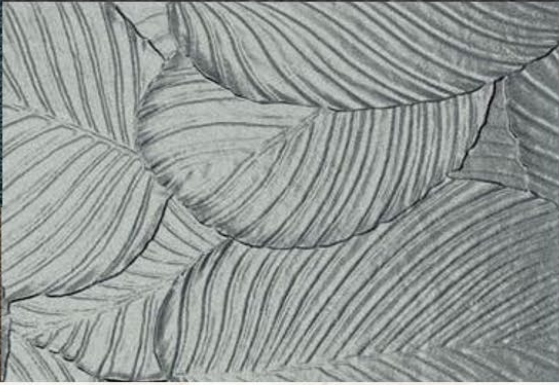
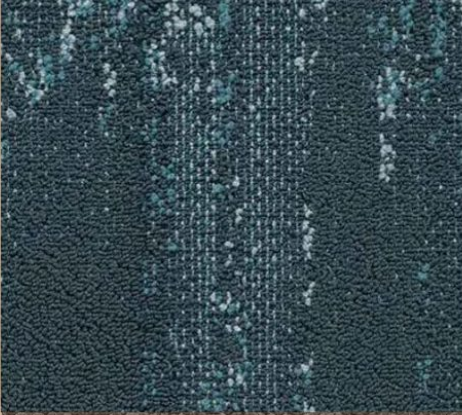
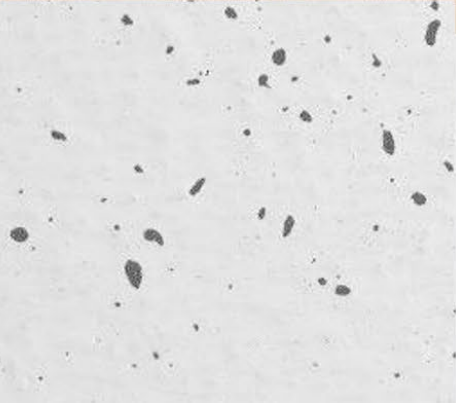
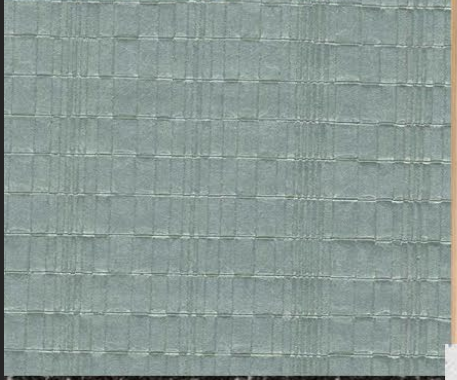
PROJECT 4: CORPORATE OFFICE: COMMON SPIRIT HEALTH CARE, PHOENIX ARIZONA



100,000 square foot corporate office fit-out located in Phoenix, Arizona. This initiative was the pilot design for this client. After examining core values and ethics of client identity, I processed and translated that information to create a dynamic, bustling floor plan that accurately reflects client needs and persona. Warm and cool material palettes are applied in an innovative fashion as a primary way-finding tool. My visual renders capture wide range of work postures and concepts.

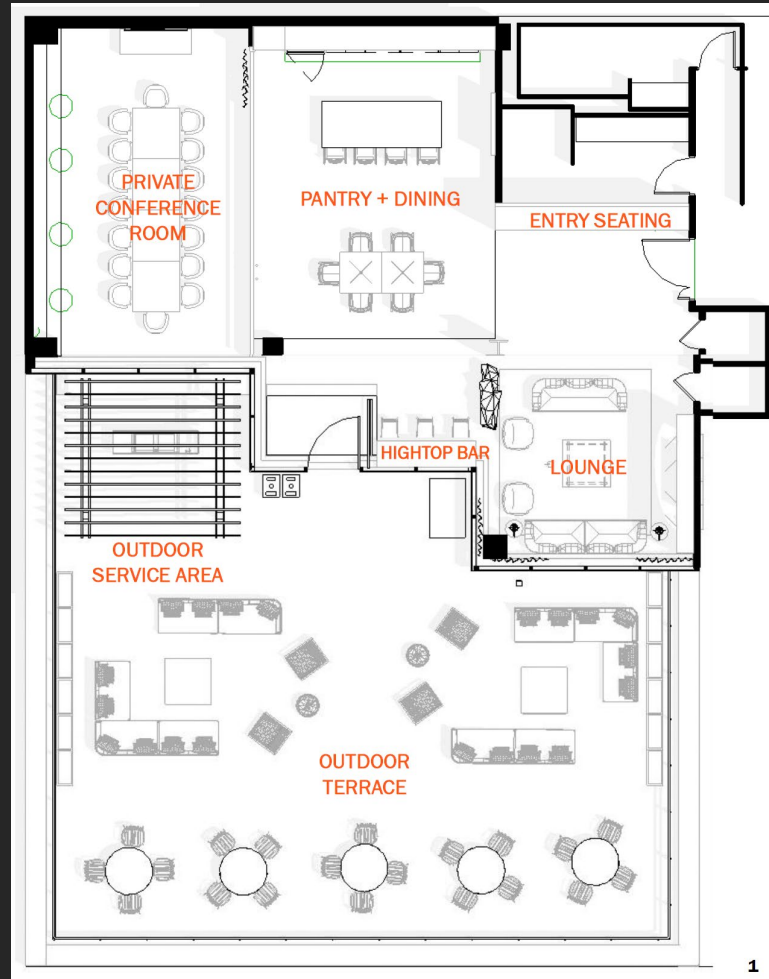
MATERIALALITY





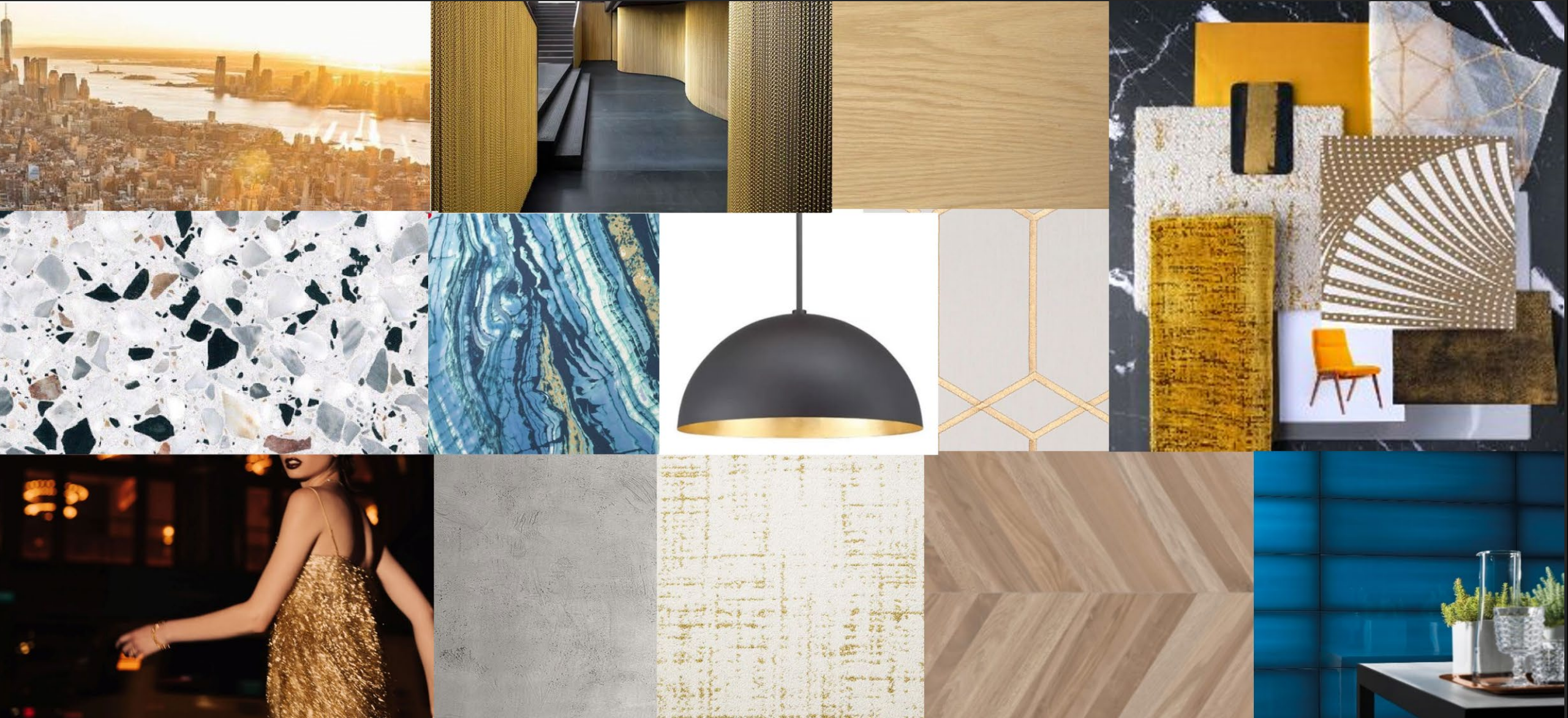


PROJECT 5: AMENITY SPACE, RESIDENTIAL BUILDING, MIDTOWN MANHATTAN



This amenity space is located in a high-rise residential apartment building in midtown Manhattan. I worked one-on-one with the client to bring her vision to life. I designed custom millwork that is featured in her living space and pantry, curated a selection of furniture to carry out her golden hues palette, and corresponded with her contractor throughout the construction process to ensure a clean finished product.

MATERIALALITY







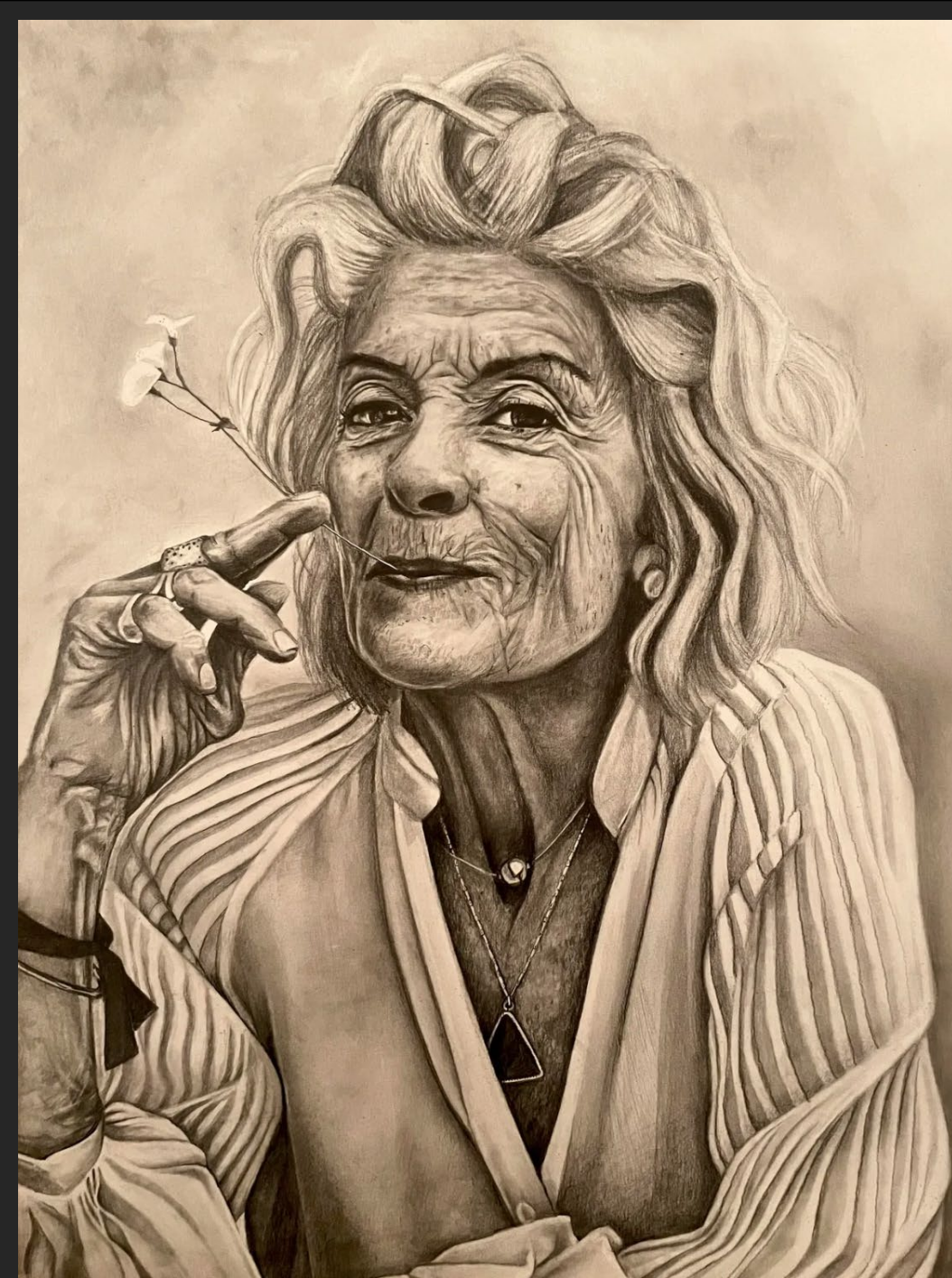
PROJECT 6: ARTWORK

The following is a small selection of paintings and pencil drawings that I have created within the last 5 years. I am regularly commissioned for my artwork.



Warm Bed Soft Sun,
2018, oil on canvas, 36 x 36 in

Wise Woman,
Pencil on Paper,
24"x18"



Ms. Hepburn,
2020, graphite on paper,
18 x 24 in





Elderly Woman,
2016, oil on paper, 18 x 24 in



Elderly Man,
2016, oil on paper,
18 x 24 in

Ms. Monroe,
2020, graphite on paper, 18 x 20 in





Jamaican Woman,
2018, Oil on
Canvas, 16 x 20 in



Suddenly I See,
2019, oil on canvas,
24 x 36 in

Engaged,
2018, oil on
canvas, 24 x 24 in



K. B O R M A N N

katebormann@gmail.com

(908)-531-1476

www.katebormann.com