



# MIDLAND, TEXAS

# AUCTION



## TUESDAY DECEMBER 7th, 2021

9:00A.M. (CST) • Preview Starting December 3, 2021

7% Buyer Premium On Line • 5% Buyer Premium On Site

Auctioneers | Sixto Paiz – #17750 • Eric Dyess – TX Lic# 16926

**DRILLING RIGS & COMPONENTS**  
**WELL SERVICE RIGS & COMPONENTS**  
**WATER WELL RIGS**  
**CONSTRUCTION EQUIPMENT**  
**TRUCKS • TRAILERS**

RIG #64 - TSM 6000-A

SCHRAMM TXD 200 DRILLING RIGS

2006 WATSON HOPPER GXHTA

2008 S&S DTS-1000PB-118

2010 ATLAS COPCO PREDATOR

CARDWELL DOUBLE DRUM ROTARY DRILLING RIG

VISIT

# www.PermianInt.com

Call Steve Taylor (432-448-0406)  
Eric Dyess (940-452-4132), OR  
Michael Hardwick (432-448-3208)





COOPER LTO 350



2006 WILSON



CAT 631

## YARD #1 - MIDLAND, TX

Directions: 4006 SCR 1232 MIDLAND, TX 79706. Exit 131 off I-20, go South 1 mile, yard on Right

Contact: Shawn Johnson 432-269-0225

PREVIEW & CHECKOUT: PREVIEW BEGINNING DEC. 3<sup>RD</sup>, 2021 CHECKOUT: MONDAY- FRIDAY, 8am- 5pm, SATURDAY BY APPT. thru DECEMBER 21<sup>ST</sup>, 2021

### ELECTRIC VEHICLE

BIG MAN STREET LEGAL ELECTRIC VEHICLE (NEW BATTERIES)

### CONSTRUCTION

CAT 631 OPEN SCRAPER BOWL MOTORSCRAPER, SN- DB00238, P/B CAT 3408E 515 HP, 8 SPD AUTO POWERSHIFT TRANS., CAB, SHOWS 410 HRS

NEW HOLLAND 555E 2X4 BACKHOE, SN- 031018597, P/B 4 CYL DIESEL ENGINE, SHUTTLE SHIFT TRANS., SHOWS 1805 HRS

8' HEAVY DUTY RIPPER ROOT PLOW F/ DOZER

### DRILLING RIGS

#### ATLAS COPCO PREDATOR

2010 ATLAS COPCO PREDATOR DRILLING RIG, SN- US050125, ATLAS COPCO SUBSTRUCTURE & PIPE STAKE, (2) MZ9 1000 HP MUD PUMPS, P/B DETROIT 12V2000 DIESEL ENGINES, TOP DOG HOUSE, HONDA POWERED WIRELINE UNIT, DRILL PIPE & COLLARS, PIPE BASKET,



2018 FORD F750



1981 RGN

DEWATERING SEA CAN, 8K GAL FUEL TANK, (2) 3400 FIXED SPEED CENTRIFUGES W/ PUMPS & STANDS, (2) DBL AWD III SHAKERS, LOW WALL CATCH TANK, 2014 550KW CAT GENERATOR P/B CAT C18 DIESEL ENGINE, GENERATOR/ PARTS HOUSE ON SKID, 4 COMPARTMENT (2) SHAKER MUD TANK

#### SCHRAMM TXD 200'S

(2) 2011-2007 SCHRAMM TXD 200 DRILLING RIGS, MTD ON 3 AXLE TRAILER, P/B DETROIT DDC/MTU 12V-2000 TA DIESEL ENGINE, 760 HP, 50' HEAD, TRAVEL, 200K# HOIST CAP., 100' PM HOIST SPD, 32K IBF PULL DOWN SPD, 30' TABLE OPENING, RETRACTED, HYD TELESCOPING FREE STANDING MAST, HYD RETRACTED SLIP BOX, RNG 2 DP, RNG 3 CASING, TILTING TOP HEAD DRIVE, 0-180 RPM, TORQUE RPM @ 7670 FT. LBS, DUAL FRONT & REAR OUTRIGGERS, TB, KINGPIN, SHOWS 4233 & 9581 HRS (1) w/ 2011 SCHRAMM LOAD SAFE TRAILER MTD AUTOMATED PIPE HANDLING SYSTEM, KIMBLE S/A TAG AXLE, & BACK ON SUB BASE/ MUD BOAT

#### DRILL PIPE & COLLARS

43 JTS (1,935') 4-1/2" XH RANGE 3 DRILL PIPE

8" DRILL COLLARS

6" DRILL COLLARS

#### WELL SERVICE RIGS

FRANKS 1058 SGL POLE WELL SERVICE RIG MTD ON 3-AXLE FRANKS CARRIER



2008 S&S DTS-1000PB-118



2008 S&S DTS-1000PB-118

#### W/S MAST

HOPPER 96' - 240K# W/S MAST W/ TUBING BOARD & Y BASE

#### WATER WELL PULLING UNIT

2011 SEMCO S-30K PUMP HOIST W/ TELESCOPING MAST, REAR HYD DOWN RIGGER, MTD ON 2011 MACK CXU613, P/B MP7 MACK DIESEL ENGINE, 8 SPD TRANS

#### HYDROVAC TRUCK

FOREMOST 1600 HYDROVAC UNIT MTD ON 2016 WESTERN STAR 4900 SB TRI-DRIVE CHASSIS, P/B 14.8L/505HP DETROIT DIESEL ENGINE, 18 SPD EATON FULLER TRANS., 330"WB, 87300 GVWR, STEERABLE PUSHER, DBL FRAME, 20K# STEER AXLE, W/ FOREMOST 1600 GAL/ 13 YD CAP. HYDROVAC UNIT, 70" OP. CABIN, 3560 CAT PUMP, 20 GPM, ROUSCHI REAR MTD BOOM, 700K BTU DYNABLAST BURNER, SLUDGE PUMP, 3K WATT INVERTER, OMNEX WIRELESS CONTROLLER, SHOWS 157164 MILES, 12568 ENGINE HRS, 3694 PUMP HRS, 5283 BLOWER HRS

#### HAUL TRUCKS

2013 KENWORTH T800 TRI-AXLE DAY CAB HAUL TRUCK, P/B: ISX 15-550HP CUMMINS, 18 SPD EATON ULTRA SHIRT AUTO TRANS, 260" WB, DBL. FRAME, 20K# STEER AXLE, TRIPLE LOCKING REAR ENDS, STEERABLE AIR LIFT PUSHER AXLE, 315/80R22.5" STEER, 11R24.5" DRIVE TIRES, SLIDING 5TH WHEEL, AIR SUSP, SHOWS 300,870 MILES, SHOWS 23,045 HOURS

1999 FREIGHTLINER T/A SLEEPER HAUL TRUCK



RS-F1000



2014 FORUM WRANGLER 3550

#### PRESSURE WASHER VAN TRUCK

2018 FORD F750 EXT CAB DUALY MOBILE PRESSURE WASHER VAN TRUCK, P/B V10 TRITON GAS ENGINE, AUTO TRANS., HYD BRAKES, 24' X 8' X 8' MORGAN BOX, W/ (4) HYDRO TEK STEAMER PRESSURE WASHERS, P/B HONDA ENGINES, 900-GAL STORAGE TANK, SHOWS 7398 MILES

#### PICKUP

2006 NISSAN TITAN CREW CAB PICKUP, P/B 5.6L GAS ENGINE, AUTO TRANS., SHOWS 130,000 MILES

#### HAUL TRAILERS

1981 TRI AXLE OILFIELD RGN LOWBOY TRAILER

PNEUMATIC TRAILER

2015 HEIL 3 COMP ALUMINUM T/A PNEUMATIC TRAILER, W/ KING PIN, LANDING GEAR, AIR RIDE SUSP.

#### CATTLE POTS

(2) 2006-2001 WILSON DBL DECK T/A ALUMINUM CATTLE POTS

## YARD #2 - ALBANY, TX

Directions: 8465 N. U.S. HIGHWAY 283, ALBANY, TX 76430

Contact: \*\*\*\*\*

PREVIEW & CHECKOUT: PREVIEW BEGINNING DEC. 3<sup>RD</sup>, 2021 CHECKOUT: MONDAY- FRIDAY, 8am- 5pm thru DECEMBER 21<sup>ST</sup>, 2021 - PREVIEW & CHECKOUT BY APPOINTMENT ONLY!



2011 ST-80CC IRON ROUGHNECK



2001 WILSON



PEMCO MAST



## DRILLING RIG

**1983 R2 WICHTEX DBL. DRUM DRILLING RIG** P/B: 4-71 DETROIT DIESEL, 575 ALLISON TORQUE CONVERTER, ROTARY AIR CLUTCH, CATHEAD AIR CLUTCHES 60' HYD RAISED DERRICK, MCKISSICK 30 TON TRIP BLOCKS, BREWSTER SQUARE KELLY, BREWSTER DRIVE BUSHING, KING 53 GA SWIVEL, BALES, 4-1/2" CASING ELEVATORS, 4" DRILL PIPE ELEVATOR, (2) 8-5/8" CASING ELEVATORS, WEB WILSON TYPE C MANUAL TONGS, HYD JACKS, ALL MTD ON T/A TRAILER

## PUMP

**GARDNER DENVER FZ-FXZ TRAILER** MTD 7-1/4" X 12 DUPLEX PUMP, P/B: 8V-71 DETROIT DIESEL, 16" FAWICH AIR CLUTCH, W/ 6" CHROME LINERS, MUD HOPPER, ROD OILER, SUCTION STRAINER POT, HOIST, MUD LINES & HOSES, 700 GAL. DIESEL TANK, 5TH WHEEL

## WELL SERVICE RIG

**IGX 217 3-AXLE HOPPER PULLING UNIT** W/ 71-150C PEMCO MAST, P/B: 8V-71 DETROIT DIESEL, 4460-Z ALLISON TRANS, (4) LEVELING JACUS, HYD UTILITY WINCH, (2) SHEAVE MCKISSICK BLOCK, 7/8" TUBING LINE & 9/16" SAND LINE, FULLY TOOLED

## DOGHOUSE

**1974 LOWBOY S/A W/ STEEL DOGHOUSE** & 80 BBL WATER STORAGE TANK ALL MTD 5TH WHEEL TRAILER



2010 ATLAS COPCO PREDATOR



2010 ATLAS COPCO PREDATOR



2010 ATLAS COPCO PREDATOR

## PIPE TRAILER

**1993 SHOP BUILT T/A PIPE TRAILER W/ INV. 5TH WHEEL W/ (2) 5-7/8" SLICK DRILL COLLARS APX. (69) JTS 2139, OF 4" F.H. BOTTLENECK DRILL PIPE, REAGAN BLADDER TYPE BOP, (2) 12' PIPE RACKS**

## YARD #3 - HOBBS, NM

**Directions:** 401 E Bender Blvd, Hobbs, NM 88241 (McVay)

**Contact:** BOBBY WHINERY 575-408-2538

**PREVIEW & CHECKOUT:** PREVIEW BEGINNING DEC. 3<sup>RD</sup>, 2021 CHECKOUT: MONDAY- FRIDAY, 8am- 5pm thru DECEMBER 21<sup>ST</sup>, 2021 – PREVIEW & CHECKOUT BY APPOINTMENT ONLY!

## DRILLING COMPONENTS

### DRAWWORKS

NATIONAL 100 DRAWWORKS - 1500HP  
NATIONAL 80B-M DRAWWORKS – 1000HP  
NATIONAL SECTIONAL DRIVE COMPOUND W/(2) CAT D-398 DIESEL ENGINES

### ROTARYS

(2) NATIONAL IDEAL 27.5 ROTARYS

### DERRICKS

LEE C MOORE 142' – 700K# DERRICK  
IDEAL 830 - 137' – 800K# DERRICK

### SUBSTRUCTURES

18' X 24' X 50' – 1,000,000# SUBSTRUCTURE  
17' X 24' X 50' – 800K# SUBSTRUCTURE  
42" X 5' X 60' CATWALK

### GENERATOR HOUSES

(2) 455 KVA AC GENERATORS P/B CAT C-15 DIESEL ENGINES MTD IN 10' X 10' X 40' L GEN. HOUSE  
(2) 455 KVA AC GENERATORS P/B CAT C-15 DIESEL ENGINES MTD IN 9' X 10' X 30' L GEN. HOUSE



MZ9 - 1000HP TRIPLEX



1999 FREIGHTLINER



IGX-217

## BLOCKS

NATIONAL IDEAL 500 / 350 TON BLOCK  
NATIONAL IDEAL 360 TON BLOCK

## SWIVELS

NATIONAL N815 513 TON SWIVEL  
NATIONAL N815 350 TON SWIVEL

## ACCUMULATORS

SCARBROUGH 6 STATION HYDRAULIC 80 GAL., 3500 PRECHARGE PRESS RATING BOP ACCUMULATOR  
SCARBROUGH 6 STATION CUSTOM 210 GAL., 1500 PRECHARGE PRESS RATING BOP ACCUMULATOR

## BOPS

CAMERON T-82 13-5/8" -5K DBL HYD.  
13 5/8" -5K ANNULAR BOP  
13/58" – 5K DBL HYD

## MANIFOLDS

(2) 5K# KILL AND CHOKE MANIFOLD

## MUD PITS

(2) 8' X 10' X 40' 3-COMPARTMENT MUD SUCTION TANKS  
(2) 8' X 10' X 40' 3-COMPARTMENT MUD SHAKER TANKS  
8' X 10' X 40' 2-COMPARTMENT MUD VOLUME TANK  
8' X 8' X 30' PREMIX TANK  
8' X 5' X 30' PREMIX TANK

## FLOW LINE CLEANERS

(4) KING COBRA BRANDT FLOW LINE CLEANERS

## HOUSES

9' X 10' X 30' L TOP DOGHOUSE  
9' X 10' X 35' TOP DOGHOUSE  
8' X 10' X 50' MUD HOUSE  
9' X 10' X 40' MUDHOUSE



2006 NISSAN



1983 R2 WICHTEX



2006 WATSON HOPPER GXHTA

## YARD #4 - HOBBS, NM

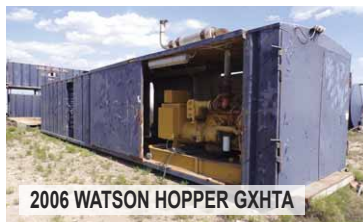
**Directions:** 221 RYCO LN. HOBBS, NM 88240 (TRIFECTA SOLUTIONS)

**PREVIEW & CHECKOUT:** PREVIEW BEGINNING DEC. 3<sup>RD</sup>, 2021 CHECKOUT: MONDAY- FRIDAY, 8am- 5pm thru DECEMBER 21<sup>ST</sup>, 2021 – PREVIEW & CHECKOUT BY APPOINTMENT ONLY!

**Contact:** 432-694-2018

## DRILLING RIG

**2006 WATSON HOPPER GXHTA DRILLING RIG**, SN-8019-06, P/B DETROIT S-60 600 HP DIESEL ENGINE, ALLISON 6061 TRANS., HOPPER 112'- MAST W/ STANDPIPE, PARMAC HYDROMATIC BRAKE, UTILITY WINCH, TUBING BOARD (NO ROD BOARD), HYDRAULIC WALKWAYS, LIGHTS IN MAST, ALL MTD ON FIVE (5) AXLE CARRIER MCKISSICK 200 TON BLOCK 12'H X 16'W X 18'L 200 TON BOX SUBSTRUCTURE W/ RT205 HYDRAULIC ROTARY TABLE, AIR TANK, V-DOOR RAMP, SAFETY RAILS, (2) STAIRCASES INGERSOLL RAND AIR FLOOR WINCH HYDRAULIC POWER UNIT, P/B DETROIT S-60, SN- 06R006305, W/ RADIATOR, HYD COOLER, (3) OUTPUTS, HYD LINES, HYD STORAGE TANK, DIESEL DAY TANK GEN HOUSE PACKAGE 50' L X 10' W CRIMPED STEEL w/ -CAT SR 4B 230KW GENERATOR, SN- 92U21512, P/B CAT 3406 -CAT SR 4B 210 KW GENERATOR, SN- EPS00885, P/B CAT 3306 DETROIT DIESEL S-60 ENGINE, W/ RADIATOR, SN- 6RE-215620 MKF500 TRIPLEX PUMP, SN- 07- 260SF34, PULSATION DAMPENER, MCM 5X6X14 CENT PUMP, P/B 50 HP ELECTRIC MOTOR, SHEAR RELIEF, MUD GAUGE, BELT DRIVEN DETROIT DIESEL S-60 ENGINE W/ RADIATOR, SKIDDED, SN- 6RE-215565 CSF500 TRIPLEX PUMP, SN- 07-26CSF-36, PULSATION DAMPENER, MCM 5X6



2006 WATSON HOPPER GXHTA



2006 WATSON HOPPER GXHTA



BIG MAN ELEC. VEHICLE

CENT PUMP, P/B 50 HP ELECTRIC MOTOR, MUD VALVE, MUD GAUGE, BELT DRIVEN  
47'L X 10'W X 6'H CRIMPED STEEL MUD SHAKER TANK, (4) COMPARTMENT, INTERNAL PLUMBING, (1) NOV BRANDT SHALE SHAKER, 8X6X14 CENT PUMP, P/B ELECTRIC MOTOR, 6' PORCH, TOP MTD WALKWAYS, (2) STAIRCASES 30'L X 8'W X 6'H CRIMPED STEEL MUD SUCTION TANK, W/ 6' PORCH, (1) COMPARTMENT, INTERNAL PLUMBING, 8X6X14 CENT PUMP, P/B ELECTRIC



WILSON



NATIONAL 700

MOTOR, TOP MTD WALKWAY, STAIRCASE 30'L X 10'W X 10'H CRIMPED STEEL TOP DOGHOUSE SMC TUFF STUFF, AUTOMATIC DRILLER W/ 4' PORCH, KNOWLEDGE BOX, BENCH/ STORAGE BOXES, LOCKERS, A/C, LIGHTS 30'L X 10'W X 10'H CRIMPED STEEL, BOTTOM DOGHOUSE, SHELVES, (13) LOCKERS, BENCHES, LIGHTS 10'W X 34'L 2/ 5' PORCH 500 BBL WATER TANK 10'W X 34'L W/ 5' PORCH 500 BBL WATER TANK, 8X4X13 COBRA CENT PUMP P/B 25HP ELECTRIC MOTOR 24'L X 7'W 8,400 GALLON DIESEL TANK 7'W X 11'L (5) COMPARTMENT LUBESTER W/ DRIP TROUGH (5) STATION HYDRAULIC CLOSING UNIT, BEAR TRIPLEX PUMP P/B 25 HP ELECTRIC MOTOR, (8) ACCUMULATOR BOTTLES 200 TON ROTARY SWIVEL OIL WORKS 1600 HYDRAULIC WIRELINE MACHINE



G.DENVER PZ7

(1) HYD LINE SUITCASE W/ 13 LINES, (2) WATER/ FUEL LINE SUITCASES 8'W X 6'H X 20'L STEEL RIG MATS 8'W X 3'H X 12'L JUNK BOX W/ CONTENTS

## YARD #5 - HOBBS, NM

Directions: 2605 N LOVINGTON HWY, HOBBS, NM 88240

PREVIEW & CHECKOUT: PREVIEW BEGINNING DEC. 3<sup>RD</sup>, 2021 CHECKOUT: MONDAY- FRIDAY, 8am- 5pm thru DECEMBER 21<sup>ST</sup>, 2021 – PREVIEW & CHECKOUT BY APPOINTMENT ONLY!

Contact: 432-694-2018

## WELL SERVICING MAST

(2) PEMCO WELL SERVICE RIG MASTS

## YARD #6 - CASPER, WY

Directions: 8555 DELTA DR, CASPER, WY 82604

PREVIEW & CHECKOUT: PREVIEW BEGINNING DEC. 3<sup>RD</sup>, 2021 CHECKOUT: MONDAY- FRIDAY, 8am- 5pm thru DECEMBER 21<sup>ST</sup>, 2021 – PREVIEW & CHECKOUT BY APPOINTMENT ONLY!

Contact: DOUG EVELYN 307-258-5040

## DRILLING / WORK OVER RIG

2008 STEWART & STEVENSON 1000 HP MECHANICAL TRAILER MTD DRILLING RIG/ WORK OVER RIG, MODEL DTS-1000PB-118, STEWART & STEVENSON DRWWKS, 2010 TESCO TOP DRIVE, 118' – 440000 LB HYDRAULIC RAISED MAST, 2008 S&S HYDRAULIC RAISED SUBSTRUCTURE, 2014 FORUM PIPE WRANGLER 3550, 2011 NATIONAL OIL ST-80CC IRON ROUGHNECK, 2008 FAB TECH TOP DRIVE HOUSE, (2) RS-F1000 TRIPLEX PUMPS, P/B DETROIT MTV DIESEL ENGINES, 2010 FAB TECH GENERATOR, 2011 FAB TECH 400 BBL WATER TANK W/ CREW HOUSE, 2010 FAB TECH 500 BBL MUD SUCTION PIT, 2010 FAB TECH 500 BBL SHAKER PIT, 2011 FAB TECH 100 BBL TRIP TANK, 2008 AMERITECH 12' X 48' SUPERVISOR TRAILER, 2008 PERSONNEL TRAILER, 2011 FAB TECH 8' X 12' X 20' TOP DOG HOUSE, 2011 OIL WORKS KELLY SPINNER, 2012 CHALLENGER 96" X 250 TON ELEVATOR LINKS

## YARD #7 - JENA, LA

Directions: 21207 LA-8 JENA, LA 71342

PREVIEW & CHECKOUT: PREVIEW BEGINNING DEC. 3<sup>RD</sup>, 2021 CHECKOUT: MONDAY- FRIDAY, 8am- 5pm thru DECEMBER 21<sup>ST</sup>, 2021 – PREVIEW & CHECKOUT BY APPOINTMENT ONLY!

Contact: JUSTIN 318-992-4111 OR 318-229-9017



1-432-694-2018

Office & Yard:  
4006 SCR 1232  
Midland, TX 79706

www.permianint.com

## AUCTION INFORMATION

### Date & Time

Tuesday – December 7th, 2021  
@ 9AM (CST)

### Auction Location - Midland, TX

Permian International Auctions  
4006 SCR 1232 • Midland, TX 79706

### Airport

Midland International Air & Space Port  
Served by major airlines and car rental companies

### Other Hotels

Best Western Midland Suites  
432-218-7549  
Holiday Inn & Suites Midland S-I-20  
432-695-9020  
Country Inn & Suites 432-218-7980  
Comfort Inn 432-695-6900  
Quality Inn 520-505-2281  
Suburban Extended Stay  
432-689-0430

### TERMS OF SALE

All bidders must register and provide proper identification. All purchases must be PAID IN FULL on sale date before equipment will be released. Acceptable forms of payment include Cashier's Check, Travelers Checks, Wire Transfer or Personal/Company Check Accompanied by BANK LETTER OF GUARANTEE. No drafts will be accepted. All printed information regarding this sale is merely a guide,

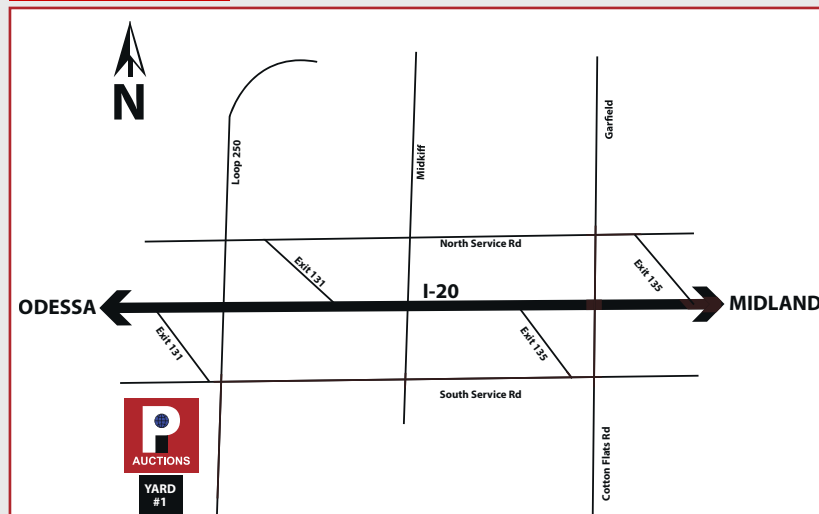
subject to change, and neither the auction Company, Sellers, nor Publishers shall be liable for any errors in this brochure. All items will be sold "AS IS, WHERE IS, WITH ALL FAULTS" and without guarantee or warranty of any kind, either expressed or implied.

### TAX NOTICE

Purchasers who are tax exempt MUST provide a copy of their SALES and USE TAX PERMIT at the time of BIDDER REGISTRATION. The company Federal Identification Number, or for a proprietorship, the purchaser's social security number will also be required at registration. **BRING A COPY OF YOUR SALES AND USE TAX PERMIT!**

### ABSENTEE BIDS

Absentee Bids Only Allowed with 50% DEPOSIT OF MAXIMUM BID and WRITTEN INSTRUCTIONS to Midland Office 24 HOURS PRIOR TO AUCTION, NO EXCEPTIONS. *Preview Starting December 3, 2021*







RIG #64 - TSM 6000-A

### DRILLING RIG 64

**MECHANICAL 600HP**, RATED TO 5,500' WITH 4" DRILL PIPE

**TSM 6000-A** 600 HP S/D DRWWKS W/ 324 EATON AUXILIARY BRAKE, P/B CAT C-15 DIESEL ENGINE

**DRECO** 96' HIGH 165,000 LBS. MAST  
**CASSADY ENGINEERING** SINGLE BOX SUB, 14' WIDE, 12'-6" OVERALL HEIGHT  
(2) **F-1000** TRIPLEX, 1000HP EA. P/B CAT D-398 DIESEL ENGINES

**MUD TANK SYSTEM:** (1) ACTIVE TANK (400 BBL. CAPACITY), (1) VORTECH FLUID SYSTEMS DOUBLE ELLIPTICAL MOTION SHALE SHAKER, MUD AGITATORS, 2-CONE DESANDER, MUD HOPPER, GAS BUSTER

(2) **MARATHON** 380KW GENERATORS P/B DETROIT S-60 DIESEL ENGINES  
MTD IN 11'-6" W X 40' L GEN. HOUSE

**HYDRIL GK** 11" X 3000 PSI ANNULAR  
**TOWNSEND** 11" X 3,000 PSI DOUBLE RAM BOP

FIVE STATION, 80 GALLON CLOSING UNIT WITH A CAT TRIPLEX CHARGING PUMP AND TWO AIR PUMPS

**CASSIDY ENGINEERING** HYDRAULIC CATWALK W/ ABILITY TO LAY DOWN AND PICK UP DRILL STRING AND CASING

6 X 19 IWRC JOLLY ENGINEERING RT 175 WITH 17-1/2" ROTARY TABLE

TOOLPUSHERS QUARTERS  
HANDLING TOOLS

### DRILL PIPE / COLLARS

4" S-135 14.00#/FT.  
6-1/4" DRILL COLLARS



2011 SEMCO S-30K

### WELL SERVICE RIG

**COOPER LTO 350** BACK-IN W/S RIG P/B DETROIT SERIES 60 DIESEL ENGINE, ALLISON 5860 TRANS, 2008 NOV 96'-210,000 MAST, TELESCOPING 20' WORK FLOOR, 15" DBL HYDROMATIC BRAKE, 100-TON MCKISSICK BLOCK, MTD ON 5-AXLE CARRIER

### YARD #8 - IRA, TX

Directions: 11141 CR 3128 IRA, TX 79527

**PREVIEW & CHECKOUT:** PREVIEW BEGINNING DEC. 3<sup>RD</sup>, 2021 CHECKOUT: MONDAY- FRIDAY, 8am- 5pm thru DECEMBER 21<sup>ST</sup>, 2021 – PREVIEW & CHECKOUT BY APPOINTMENT ONLY!

Contact: CHRIS PATCHKE 432-305-6601

### WELL SERVICE RIGS

**XJ 400** BACK IN W/S RIG, P/B DETROIT S-60 DIESEL ENGINE, ALLISON 5860 TRANS., 96'- 220K# MAST, 15" DBL HYDROMATIC, MTD ON 5 AXLE CARRIER

**FRANKS 1287-160** BACK IN W/S RIGS, P/B DETROIT S-60 DIESEL ENGINE, ALLISON 750 TRANS., 96' – 150K# TRISCOPE MAST, MTD ON 4 AXLE CARRIER

### YARD #9 - MERKEL, TX

Directions: 5449 FM 1232 MERKEL, TX 79536

**PREVIEW & CHECKOUT:** PREVIEW BEGINNING DEC. 3<sup>RD</sup>, 2021 CHECKOUT: MONDAY- FRIDAY, 8am- 5pm thru DECEMBER 21<sup>ST</sup>, 2021 – PREVIEW & CHECKOUT BY APPOINTMENT ONLY!

Contact: GENE TOWNSEND  
325-338-0185

### PULLING UNIT

**WILSON** 4 AXLE BACK-IN WELL SERVICE RIG, P/B CAT ENGINE W/ ALLISON TRANS.

### WATER WELL RIG

**CARDWELL DOUBLE DRUM ROTARY DRILLING RIG** W/ HYDRAULIC JACKS, AIR ASSISTED WALKWAYS, 6X8 MISSION MAGNUM CENT PUMP, P/B ALLIS CHALMER 3500 DIESEL ENGINE, MACK 6 CYL DIESEL DECK ENGINE, 200 GALLON DIESEL DAY TANK, 8" SUCTION HOSE W/ BOOM, 2" ELECTRIC PRIME PUMP, 22" BREWSTER ROTARY TABLE, HYDRAULIC BREAKOUT CYLINDER W/ 65' HYDRAULIC RAISED MAST, MCKISSICK (2) 16" SHEAVE 50 TON BLOCK, MCKISSICK (2) 14" SHEAVE 35 TON BLOCK W/ 8"W X 16"H X 28"L MUD BOAT W/ 7.4"W X 5"H X 12"L DOGHOUSE STAND W/ 8"W X 12"L DOGHOUSE

### PUMPS

**NATIONAL 700 DUPLEX PUMP**, P/B CAT 379 DIESEL ENGINE  
**GARDNER DENVER PZ7** TRIPLEX PUMP

### REVERSE PITS

6' X 5' X 23' REVERSE PIT  
7' X 5' X 19.6' REVERSE PIT

### TUBULARS

(10) 3-1/2" SPIRAL DRILL COLLARS  
(120) JTS 3600 FT. 3-1/2" 13.30 WEIGHT DP

### KILL TRAILER

OVERLAND KILL TRAILER

### YARD #10 - OKLAHOMA CITY, OK

Directions: 2224 S. MISSOURI AVE., OKLAHOMA CITY, OK 73129

**PREVIEW & CHECKOUT:** PREVIEW BEGINNING DEC. 3<sup>RD</sup>, 2021 CHECKOUT: MONDAY- FRIDAY, 8am- 5pm thru DECEMBER 21<sup>ST</sup>, 2021 – PREVIEW & CHECKOUT BY APPOINTMENT ONLY!

Contact: JJ FISHER 405-677-7901

### WELL SERVICE RIGS

84" 150 TON TOOL PUSHER  
ELEVATOR LINKS  
2-3/8" UPSET WEB WILSON CENTER LATCH ELEVATOR  
2-3/8" UPSET BJ CENTER LATCH ELEVATOR  
2-7/8" UPSET BJ CENTER LATCH ELEVATOR  
4" FH 250 TON BJ ELEVATOR  
3-1/2" IF 250 MGG ELEVATOR  
3-1/2" 150 TON WEB WILSON ELEVATOR  
8-5/8" 100 TON BJ CASING ELEVATOR  
HC-2X REXROTH CONTROL VALVES



FOREMOST 1600 HYDRO VAC





2013 KENWORTH T800



FRANKS 1058



NEW HOLLAD 555E

# AUCTION

## TUESDAY

DECEMBER 7, 2021  
9AM CST

Like us on  
facebook 

Online Bidding Provided by:



ONLINE BIDDING  
Powered By  
proxibid



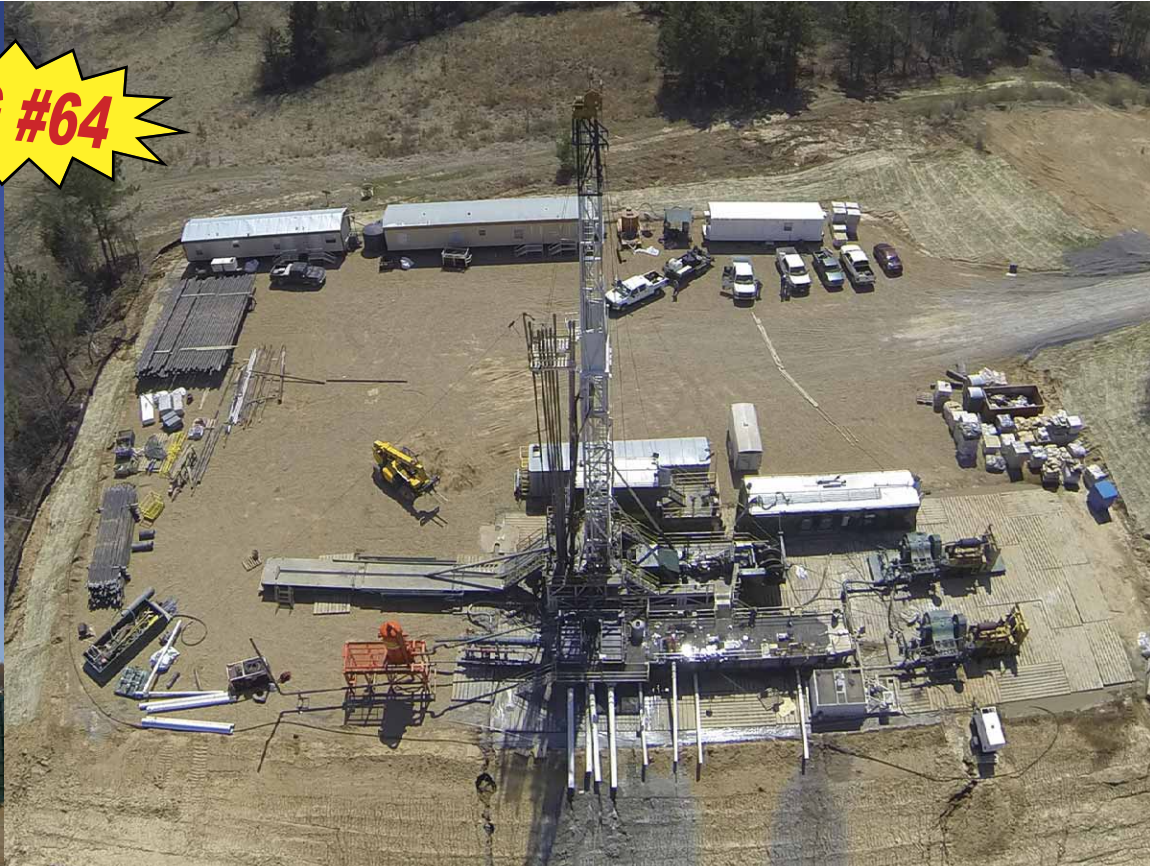
Permian International  
Energy Services, LLC

P.O. BOX 3820  
Midland, TX 79702

[www.piauction.com](http://www.piauction.com)  
[www.permianint.com](http://www.permianint.com)



**RIG #64**



**TUESDAY • DECEMBER 7, 2021 • MIDLAND, TEXAS • 9AM (CST)**