

# MIDLAND, TEXAS



Permian International  
Energy Services, LLC

**STILL WORKING**

# HUGE 3-DAY AUCTION

**NO ON SITE BUYER PREMIUM THIS SALE!**

~~3% Buyer Premium On-Site~~ • 2% Admin Fee for Online Bidders  
Auctioneers | Mike Jones TX Lic: 6756 • Eric Dyess – TX Lic# 16926

**SOME ITEMS STILL WORKING & BEING RECEIVED AT THE TIME OF PUBLICATION. THIS IS NOT A COMPLETE LISTING OF EQUIPMENT FOR SALE, PLEASE CALL AHEAD OF TIME TO VERIFY THAT ITEMS OF INTEREST ARE IN THE YARD AND/OR STILL IN THE SALE!**

DY1-YD2 • Rig #8 National 100

**WED/THURS/FRI • MARCH 20/21/22, 2019**  
9:00A.M. (CST) @ THE MIDLAND COUNTY HORSESHOE ARENA



DY3-YD1 • 2012 KW W900

## COMPLETE LIQUIDATION OF SILVER OAK DRILLING

(12) COMPLETE DRILLING RIGS  
(SOME STILL WORKING)  
DRILLING COMPONENTS  
PIPE & COLLARS • PICKUPS  
WELL SERVICE RIGS  
TRUCKS • COIL TUBING RIG  
TRAILERS • CREW TRAILERS  
WELL SERVICE TOOLS  
CREW TRAILERS



DY3-YD1 • 2009 CAT 140M



DY3-YD1 • 1982 Franks 1287-160



DY1-YD3 • Rig #7 National 55

**WWW.PERMIANINT.COM**

**OR CALL STEVE TAYLOR 432.448.0406 OR ERIC DYESS 940.452.4132**



**Rebuilt**

DY1-YD2 • TESCO 250 HXT Top Drive



DY1-YD2 • 1600 HP Triplex Pump



DY1-YD2 • Rig #1 Davis 1000



DY1-YD2 • Rig #1



DY1-YD2 • Rig #2 1600HP



DY1-YD2 • Forum Hyd. Cat Walk



DY1-YD2 • Rig #3 500BBL

# DAY 1

## YARD #1 - MIDLAND, TX

### DRILLING RIG

#### MD-COWAN 525-SUPER SINGLE

PORTABLE DRILLING RIG W/RIG TECH RT-400B S/D DRWWKS, EATON WCB-2 AUX BRAKE, P/B CAT C-18, ALLISON CLBT-6061TRANS, HYD WINCH, ON 4-AXLE TRAILER W/ BACK-ON RAMP

(2) CAT C-18 ENGS

INT'L DERRICK 72'H 500,000# MAST & 12'H SUBSTRUCTURE W/ HYD PIPE ARM FOR R-3 DRILL PIPE

RIG TECH CLOSED LOOP BRAKE COOLING SYSTEM

HYD RAISED TOP DOGHOUSE W/ BOP REMOTE, BOTTOM DOGHOUSE, BURNSCO CLOSING UNIT

VENTURE TECH XK250 250-TON TOP DRIVE SYSTEM W/ COWAN 250-TON BLOCK & HPU P/B CAT C-18

(2) CAT SR4 455KW AC GEN SETS EA P/B CAT C-15, (2) SULLIVAN PALATEK 25D4 25HP AIR COMPRS

(2) WEATHERFORD MP-13 1,300HP TRIPLEX PUMPS EA P/B CAT 3512

TOWNSEND ANN & TOWNSEND DBL BOPS, 5,000# CHOKE MANIFOLD

300-BBL SINGLE TANK MUD SYSTEM W/ DRILCO VACUUM DEGASSER, (2) DERRICK TC 504 SUPER G SHALE SHAKERS & SOLIDS CONTROL EQUIP

500-BBL WATER TANK

8000-GAL FUEL TANK

PARTS HOUSE

HANDLING TOOLS & AUX EQUIP

(VIEW BY APPOINTMENT ONLY)

### MISC DRILLING

IRON DERRICK MAN MODEL# ID-12000-120

### PUMPS

(2) GARDNER DENVER PY-7 TRIPLEX MUD PUMPS, 550 HP, W/7" STROKE 5" X 6" CHARGING PUMP, C.E. PULSATION DAMPENERS, MUD GAUGE, SHEAR RELIEF, P/B CAT D-379 DIESEL ENGINE, ELEC. START, RADIATOR, GAUGES, SKIDDED.

## YARD #2 - ARTESIA, NM

### RIGS #1, #9, #10

(3) DAVIS 1000 P/B (2) CAT C-18 DIESEL ENGS

132' PBDS, 500,000# DERRICK – TOP DRIVE CAPABLE

50'X24'X17' 500,000# SUBSTRUCTURE

(2) F-1600 EMSCO TRIPLEX MUD PUMPS P/B CAT 3512'S

SHAFFER LWS 13-5/8" – 5,000# DBL BOP

SHAFFER 13-5/8" -5,000# ANNULAR BOP

SCARBROUGH INC. 6-STATION CLOSING UNIT / CHOKE MANIFOLD

(2) 365 KW ELEC GEN P/B CAT C-15 DIESEL ENGS (HOUSED)

(2) 8'X10'X40' STEEL PITS W/ AGITATORS, CENT. PUMPS

(OPTIONAL) 8'X10'X50' PIT

(2) 500 BBL WATER TANKS

8,000 GAL. DIESEL TANK

DOGHOUSE, MUDHOUSE, TOOLHOUSE, CAT WALKS, PIPE RACKS

### RIG #8

NATIONAL 100 P/B (3) CAT 3412 DIESEL ENGS

142' LEE C MOORE, 750,000# DERRICK – TOP DRIVE CAPABLE

60'X30'X22' 750,000# SUBSTRUCTURE

(2) F-1600 EMSCO TRIPLEX MUD PUMPS P/B CAT 3512'S

SHAFFER LWS 13-5/8" – 5,000# DBL BOP

SHAFFER 13-5/8" -5,000# ANNULAR BOP

SCARBROUGH INC. 6-STATION CLOSING UNIT / CHOKE MANIFOLD

(1) 410 KW ELEC GEN & (1) 365 KW ELEC GEN EACH P/B CAT C-15 DIESEL ENG

(2) 8'X10'X40' STEEL PITS W/ AGITATORS, CENT. PUMPS

(2) 500 BBL WATER TANKS

8,000 GAL. DIESEL TANK

CAT WALKS, PIPE RACKS

### RIG #3

MIDCONTINENT U36A P/B (2) CAT C-15 DIESEL ENGS

128' PBDS, 450,000# DERRICK 50'X20'X17' 450,000# SUBSTRUCTURE

(2) F-1600 EMSCO TRIPLEX MUD PUMPS P/B CAT 3512'S

SHAFFER LWS 13-5/8" –3,000# DBL BOP

SHAFFER 13-5/8" -3,000# ANNULAR BOP

7-STATION CLOSING UNIT / CHOKE MANIFOLD

(2) 365 KW ELEC GEN P/B CAT C-15 DIESEL ENGS (HOUSED)

(2) 6'X10'X40' STEEL PITS W/ AGITATORS, CENT. PUMPS

(2) 500 BBL WATER TANKS

8,000 GAL. DIESEL TANK

DOGHOUSE, MUDHOUSE, TOOLHOUSE, CAT WALKS, PIPE RACKS

### RIG #11

EC TOOL 700 P/B (2) CAT C-15 DIESEL ENGS

128' PBDS, 450,000# DERRICK

50'X21'X17' 450,000# SUBSTRUCTURE

(2) F-1000 EMSCO TRIPLEX MUD PUMPS P/B CAT 3508'S

SHAFFER LWS 13-5/8" –3,000# DBL BOP

SHAFFER 13-5/8" -3,000# ANNULAR BOP

SCARBROUGH INC. 6-STATION CLOSING UNIT / CHOKE MANIFOLD

(2) 365 KW ELEC GEN P/B CAT C-15 DIESEL ENGS (HOUSED)

(2) 6'X10'X40' STEEL PITS W/ AGITATORS, CENT. PUMPS

(2) 500 BBL WATER TANKS

8,000 GAL. DIESEL TANK

DOGHOUSE, MUDHOUSE, TOOLHOUSE, CAT WALKS, PIPE RACKS

### RIG #2

GARDNER DENVER 500 P/B (2) CAT C-15 DIESEL ENGS

126' LEE C MOORE, 380,000# DERRICK

50'X21'X17' 380,000#

SUBSTRUCTURE



(2) F-1000 EMSCO TRIPLEX MUD PUMPS P/B CAT 3508'S

SHAFFER LWS 13-5/8" -3,000# DBL BOP

SHAFFER 13-5/8" -3,000# ANNULAR BOP

SCARBROUGH INC. 5-STATION CLOSING UNIT / CHOKE MANIFOLD

(1) 4555 KW ELEC GEN & (1) 365 KW ELEC GEN EACH P/B CAT C-15 DIESEL ENGS (HOUSED)

(2) 6'X10'X40' STEEL PITS W/ AGITATORS, CENT. PUMPS

(2) 500 BBL WATER TANKS 8,000 GAL. DIESEL TANK

DOGHOUSE, MUDHOUSE, TOOLHOUSE, CAT WALKS, PIPE RACKS

**RIG #6**

**GARDNER DENVER 500 P/B (2) CAT C-15 DIESEL ENGS**

127' LEE C MOORE, 350,000# DERRICK

50'X21'X17' 350,000# SUBSTRUCTURE

(2) F-1000 EMSCO TRIPLEX MUD PUMPS P/B CAT 3508'S

SHAFFER LWS 13-5/8" -3,000# DBL BOP

SHAFFER 13-5/8" -3,000# ANNULAR BOP

SCARBROUGH INC. HYDRAULIC CLOSING UNIT / CHOKE MANIFOLD

(2) 365 KW ELEC GEN P/B CAT C-15 DIESEL ENGS (HOUSED)

(2) 6'X10'X40' STEEL PITS W/ AGITATORS, CENT. PUMPS

(2) 500 BBL WATER TANKS 8,000 GAL. DIESEL TANK

DOGHOUSE, MUDHOUSE, TOOLHOUSE, CAT WALKS, PIPE RACKS

**RIG #5**

**NATIONAL 370 P/B (2) CAT C-15 DIESEL ENGS**

104' PBDS, 350,000# DERRICK

50'X21'X17' 350,000# SUBSTRUCTURE

(2) F-1000 EMSCO TRIPLEX MUD PUMPS P/B CAT 3508'S

SHAFFER LWS 13-5/8" -3,000# DBL BOP

SHAFFER 13-5/8" -3,000# ANNULAR BOP

SCARBROUGH INC. HYDRAULIC CLOSING UNIT / CHOKE MANIFOLD

(2) 365 KW ELEC GEN P/B CAT C-15 DIESEL ENGS (HOUSED)

(2) 6'X10'X40' STEEL PITS W/ AGITATORS, CENT. PUMPS

(2) 500 BBL WATER TANKS 8,000 GAL. DIESEL TANK

DOGHOUSE, MUDHOUSE, TOOLHOUSE, CAT WALKS, PIPE RACKS

**TOP DRIVE**

**TESCO 250-TON HYDRAULIC PORTABLE TOP DRIVE MODEL: 250 HXT (UNUSED SINCE REBUILD)**

**TESCO HYDRAULIC POWER UNIT MODEL: 1120052 P/B DETROIT DDC MTU 12-CYL DIESEL ENG. W/ HOSES, HOSE REELS MTD ON 6'W X 30'L COVERED SKID**



**YARD INFORMATION**

**PREVIEW FOR ALL YARDS**

**FRIDAY, MARCH 15th, 2019.**

8 to 5 Mon-Fri

**CHECKOUT FOR ALL YARDS**

8 to 5 Mon-Sat thru **APRIL 5th, 2019**

**YARD #2 - ARTESIA, NM**

10 BILCO RD  
ARTESIA, NM 88210  
Checkout Supervisors:  
Tony Jones 325-647-3506  
Terry Jones 254-434-1528

**YARD #3 - HOBBS, NM**

1607 SW COUNTY RD  
HOBBS, NM 88240  
Checkout Supervisor:  
Steve Taylor 432-694-2018  
Eric Dyess 432-694-2018

**YARD #4 - LOCO HILLS, NM**

MACK ENERGY - 32831 LOVINGTON HWY  
LOCO HILLS, NM 88255  
Checkout Supervisors:  
Tony Jones 325-647-3506  
Terry Jones 254-434-1528

**YARD #5 - PECOS, TX**

2100 S BICKLEY AVE  
PECOS, TX 79772  
Checkout Supervisor:  
Danny Dutchover 432-888-3161

**YARD #6 - TOMBALL, TX**

CHALLENGER EQUIPMENT  
12814 OLD BOUDREAUX LN,  
TOMBALL, TX 77373  
Checkout Supervisor:  
Wayne Hawkins 281-351-4247

**YARD #7 - HOUSTON, TX**

DAVIS RIG & EQUIPMENT  
6811 GANT RD, HOUSTON, TX 77066  
Checkout Supervisor:  
Jim Davis 281-444-0102

**AUCTION INFORMATION**

**Date & Time**

Wednesday March 20th @ 9:00AM  
Thursday March 21st, @ 9:00AM  
Friday March 22nd @ 9:00AM

**Auction Location - Midland, TX**

Midland Horseshoe Arena  
2514 Arena Trail • 79701

**Airport & Other Hotels**

Midland International Air & Space  
Port. Serviced by major airlines and  
car rental companies  
Best Western Midland Suites

432-218-7549

Holiday Inn & Suites Midland S-I-20  
432-695-9020

Country Inn & Suites 432-218-7980

Comfort Inn 432-695-6900

Quality Inn 520-505-2281

**TERMS OF SALE**

All bidders must register and provide proper identification. All purchases must be PAID IN FULL on sale date before equipment will be released. Acceptable forms of payment include Cashier's Check, Travelers Checks, Wire Transfer or Personal/Company Check

Accompanied by BANK LETTER OF GUARANTEE. No drafts will be accepted. All printed information regarding this sale is merely a guide, subject to change, and neither the auction Company, Sellers, nor Publishers shall be liable for any errors in this brochure. All items will be sold "AS IS, WHERE IS, WITH ALL FAULTS" and without guarantee or warranty of any kind, either expressed or implied.

**TAX NOTICE**

Purchasers who are tax exempt MUST provide a copy of their SALES and USE TAX PERMIT at the time of BIDDER REGISTRATION. The company Federal Identification Number, or for a proprietorship, the purchaser's social security number will also be required at registration.. **BRING A COPY OF YOUR SALES AND USE TAX PERMIT!**

**ABSENTEE BIDS**

Absentee Bids Only Allowed with 50% DEPOSIT OF MAXIMUM BID and WRITTEN INSTRUCTIONS to Midland Office 24 HOURS PRIOR TO AUCTION, NO EXCEPTIONS. **Preview Starting March 15th, 2019. NOTE: Some Equipment was still working at the time of this printing. Please call ahead of time to verify that it is in the yard.**



Permian International Energy Services, LLC

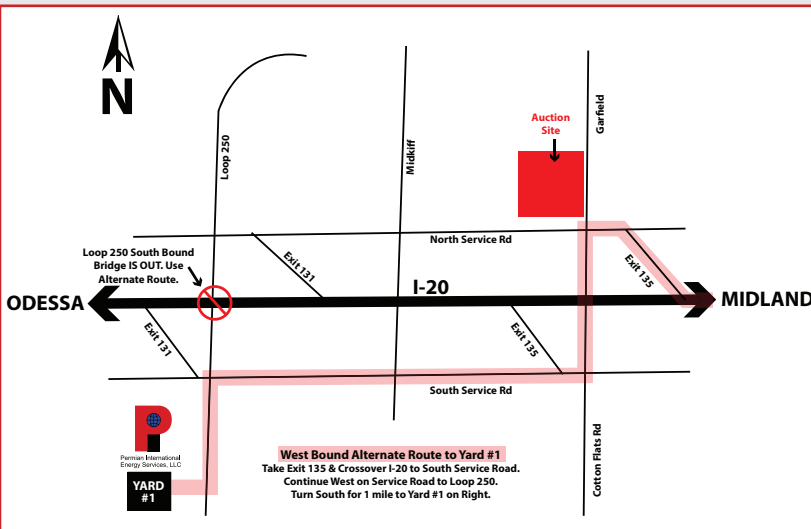
**Office:**

3107 Antelope Trail, Suite 3  
Midland, TX 79707

**Yard:**

4018 SCR 1233  
Midland, TX 79706

[www.permianint.com](http://www.permianint.com)





DY1-YD3 • Rig #4



DY1-YD3 • Rig #4 National 370



DY1-YD6 • FORUM Pipe Wrangler



DY1-YD2 • Rig #5 365KW



DY1-YD2 • Rig #5 National 370



DY1-YD5 • Rig #14 Davis 1000



DY1-YD3 • Rig #7

### MAST / TOOL PUSHER HOUSES

**PERMIAN DERRICK** 132-550 MAST, FITTED F/ TOP DRIVE, CAT 4 CERTIFICATION BY IDEAL DERRICK & STRUCTURE OCT. 5, 2018 (UNUSED SINCE CERTIFICATION)

(6) **ATCO** 10'W X 40'L, 2 ROOM PUSHER HOUSES

### HYDRAULIC PIPE HANDLER

(2) **FORUM PIPE WRANGLER** HYDRAULIC CATWALKS

### YARD #3 - HOBBS, NM

#### RIG #4

NATIONAL 370 P/B (2) CAT C-15 DIESEL ENGS

104' PBDS, 350,000# DERRICK

50'X21'X17' 350,000# SUBSTRUCTURE

(2) F-1300 TRIPLEX MUD PUMPS P/B CAT 3508'S

SHAFFER LWS 13-5/8" -3,000# DBL BOP

SHAFFER 13-5/8" -3,000# ANNULAR BOP

SCARBROUGH INC. HYDRAULIC CLOSING UNIT / CHOKE MANIFOLD

(2) 365 KW ELEC GEN P/B CAT C-15 DIESEL ENGS (HOUSED)

(2) 6'X10'X40' STEEL PITS W/ AGITATORS, CENT. PUMPS

(2) 500 BBL WATER TANKS

8,000 GAL. DIESEL TANK

DOGHOUSE, MUDHOUSE, TOOLHOUSE, PUSHER'S HOUSE, CAT WALKS, PIPE RACKS

#### RIG #7

NATIONAL 55 P/B (2) CAT C-18 DIESEL ENGS

142' UNITED DERRICK 750,000# DERRICK

46'X28'X18' 750,000# SUBSTRUCTURE

(2) F-1600 EMSCO TRIPLEX MUD PUMPS P/B CAT 3512'S

TESCO HXI 250 TON 700HP TOP DRIVE

SHAFFER LWS 13-5/8" - 5,000# DBL BOP

SHAFFER 13-5/8" -5,000# ANNULAR BOP

6-STATION CLOSING UNIT / CHOKE MANIFOLD

(2) 455 KW ELEC GEN EACH P/B CAT

C-15 DIESEL ENGS (HOUSED)

(2) 8'X10'X40' STEEL PITS W/ AGITATORS, CENT. PUMPS

(OPTIONAL) 8'X10'X50' PIT

(2) 500 BBL WATER TANKS

8,000 GAL. DIESEL TANK

DOGHOUSE, MUDHOUSE, TOOLHOUSE, PUSHER'S HOUSE, CAT WALKS, PIPE RACKS

### YARD #5 - PECOS, TX

#### RIG #14

DAVIS 1000 P/B (2) CAT C-18 DIESEL ENGS

132' PBDS, 500,000# DERRICK

50'X24'X17' 500,000#

SUBSTRUCTURE

SHAFFER 13-5/8" -5,000#

ANNULAR BOP

SCARBROUGH INC. 6-STATION

CLOSING UNIT / CHOKE MANIFOLD

(2) 365 KW ELEC GEN P/B CAT

C-15 DIESEL ENGS (HOUSED)

(2) 8'X10'X40' STEEL PITS W/

AGITATORS, CENT. PUMPS

(2) 500 BBL WATER TANKS

8,000 GAL. DIESEL TANK

DOGHOUSE, MUDHOUSE, TOOLHOUSE, PUSHER'S HOUSE, CAT WALKS, PIPE RACKS

### YARD #6 - TOMBALL, TX

#### HYDRAULIC CATWALK

**FORUM PIPE WRANGLER** HYDRAULIC

CATWALK 17' TO 22' HIGH, CAN BE

EXENDED TO 27' HIGH. HAND HELD

REMOTE CAPABILITIES, ALL REPAIR

WORK COMPLETED, MANUAL

TECHNICAL DRAWINGS (**CONTACT**

**WAYNE HAWKINS 281-351-4247 FOR**

**VIDEO OPERATING DISKS)**

(6) **PIPE BASKETS** 8'W X 38' LONG X 36"

## DAY 2

### YARD #1 - MIDLAND, TX

#### MUD TANKS

10'W X 7'H X 43'L (2) COMPARTMENT MUD TANK W/ AGITATORS

10'W X 6'6"H X 34'L W/10' PORCH

MUD PIT W/ AGITATORS, (2) 5X6X12 CENT PUMPS, DE-SILTER

10'W X 6'6"H X 34'L W/10' PORCH

MUD PIT W/ AGITATORS, 5X6X12 CENT PUMP

#### MISC DRILLING

**2008 BPM KOOMEY** STYLE, MODEL FKQ 640-6, 6-STATION ACCUMULATOR

**KOOMEY TYPE 80** 7 STATION ACCUMULATOR

**KOOMEY 6-STATION ACCUMULATOR**

2-1/2" X 191" 350 TON ELEVATOR LINKS

2-1/4" X 162" 500-TON ELEVATOR LINKS

2-1/8" X 163" 350 TON ELEVATOR LINKS

3-1/2" X 145" 500 TON ELEVATOR LINKS

**SWACO 10,000# SUPER CHOKE**

**VARCO** HYD. KELLY SPINNER

ASSORTED HANDLING TOOLS - (13) DP ELEVATORS, (14) DP SLIPS, (6) DC SLIPS

GAS BUSTER W/ 5K CHOKE MANIFOLD, SKIDDED

#### COMPRESSORS AND ENGINES

(2) **CAT 3508** DIESEL ENGINE, NATIONAL C-300-64 TORQUE CONVERTER

**NATIONAL** C-300-64 TORQUE CONVERTER

**2013 OWI** ADL AIR COMPRESSOR

(2) **OWI 390** AIR COMPRESSORS

**OWI** ADL AIR COMPRESSOR

**GARDNER DENVER** ADL COMPRESSOR

#### WASH PIPE / MILLS / FISHING TOOLS / DRILL COLLARS

9-5/8" - 5" X-LINE WASH PIPE

9" - 7" BOT WASH PIPE

ROTARY SHOES

STABILIZERS / MILLS

MULTI-STRING CUTTER

TOP SUBS

CROSSOVER SUBS

HYDRAULIC RELEASE OVERSHOTS

OVERSHOT TOP SUBS

OVER SHOT GUIDES

FISHING MAGNETS

MUD BUCKETS

(12) 4-1/2" DRILL COLLARS (UNUSED)

(13) 3-1/2" DRILL COLLARS

(UNUSED)



## YARD #2 - ARTESIA, NM

### DRWWKS

**NATIONAL 50-CA** S/D DRAWWORKS  
W/ AIR DRILLERS CONSOLE,  
CATHEADS, 2- ENGINE IN-LINE  
COMPOUND, COVERED SKID

### MAST / SUBSTRUCTURES

127'-350,000# LEE C. MOORE  
DERRICK

127' PYRAMID DERRICK

17' X 20' X 50' SUBSTRUCTURE

11' X 22' X 44' SUBSTRUCTURE

(4) 30' X 5' X 42' CATWALKS

### PUMPS

(16) RM-F800 TRIPLEX MUD PUMPS

(2) C.E. D-850 DUPLEX MUD PUMPS

(2) C.E. D-700 DUPLEX MUD PUMPS

(2) C.E. D-550 DUPLEX MUD PUMPS

(2) C.E. DA-500 DUPLEX MUD PUMPS

### ENGINES

**CAT 3512** DIESEL ENGINE W/ PUMP  
DRIVE

(7) **CAT 3508** DIESEL ENGINES

(8) **CAT-C-18** DIESEL ENGINES

**CAT-C-15** DIESEL ENGINE

**CAT 3406** DIESEL ENGINE

(3) **CAT-D-379** DIESEL ENG. W/  
NATIONAL C-245-125 TORQUE  
CONVERTER

(3) RADIATOR F/ CAT-D-379

(1) TWIN DISC MODEL F11-524-TC1  
TORQUE CONVERTER & (1)  
CATERPILLAR POWER TAKE OFF: 71-  
6542

### MUD PITS

(2) 10'W X 7'6"H X 38' 7" L W/ 10'  
PORCH, 3-COMP. MUD MIXING TANK W/  
(2) 75HP ELECTRIC MOTORS

10'W X 7'6" X 38'7" L W/ 10' PORCH 3-  
COMPARTMENT MUD MIXING TANK  
W/ (2) MUD AGITATORS

(3) 10'W X 7'6"H X 40" L 3-  
COMPARTMENT MUD  
SHAKER TANK

(2) 10'W X 9'3"H X 37'L (2)  
COMPARTMENT MUD TANK

10'W X 9'3"H X 29'L W/ 8' PORCH MUD  
TANK W/ HOPPER, PUMP MANIFOLD

10'W X 9'3"H X 37'L MUD  
SHAKER TANK

8'W X 8'H X 25'L (2) COMPARTMENT  
MUD TANK

8'W X 8'H X 10'L MUD MIXING TANK  
W/ HOPPER TABLE & MISSION  
MAGNUM 6 X 5 X 14 CENT. PUMP, P/B  
75HP ELEC. MOTOR MTD. ON 8'W X  
23'L SKID

8'W X 8'H X 33'L (2) COMPARTMENT  
MUD TANK

### TANKS

(7) 8'W X 10'3"H X 34'6" L  
WATER TANK

8'W X 10'H X 34'6" L W/ 8' PORCH  
WATER TANK W/ TRANSFER PUMP

8'W X 10'H X 34'6" L W/ 8' PORCH  
WATER TANK

8' X 8' X 43' 490 BBL WATER TANK

8' X 8' X 43' 540 BBL WATER TANK

10' DIA. X 32'L 500 BBL WATER TANK  
W/ JUNK BASKET &  
CENT. PUMP

10' DIA. X 32'L 500 BBL  
WATER TANK

### GEN HOUSE

(1) NEWAGE 500KW ELEC.  
GENERATOR, P/B CAT 3412 DIESEL  
ENG. & (1) CAT 480 KW ELEC.  
GENERATOR, P/B CAT 3412 DIESEL  
ENG. MTD. IN 10" W X 49'L GEN  
HOUSE W/ CUTLER HAMMER, 3-  
PHASE TRANSFORMER & SQUARE D  
SWITCH GEAR & CONTROLS

10'W X 47'L GENERATOR HOUSE

### HOUSES

8'W X 30'L PARTS/ CHANGE HOUSE

8'W X 24'L W/ (2) 3' COVERED  
PORCHES TOP DOG HOUSE

7' 6" W X 32" L ROUND TOP PARTS  
HOUSE

8'W X 40'L PARTS/CHANGE HOUSE

8' X 25'L W/ (2) 4' PORCHES TOP DOG  
HOUSE

10'W X 38'L PARTS HOUSE

9'W X 28'L PARTS HOUSE

### BOPs

(4) 13-5/8" - 5M DBL HYD BOPS

SHAFFER 13-5/8" - 3M DBL  
HYD BOP

CAMERON 11" - 5M DBL HYD BOP

(4) 13-5/8" -5M ANNULAR BOPS

### BLOCKS / SWIVELS / TOOLS

(2) SOWA 250-TONS BLOCKS

BJ UNIMATIC6250 250-TON BLOCK  
IDECO 160 & IDECO SHORTY  
160-TON BLOCKS  
WEB WILSON 150-TON BLOCK  
SWIVELS

ROTARY TABLES & BUSHINGS

ELEVATOR LINKS• DP ELEVATORS•  
DP SLIPS• DC SLIPS• HYDRAULIC  
PIPE SPINNERS• MANUAL TONGS

### PARTS / ROOMS / SURPLUS

ASSORTED NEW & REBUILT AIR  
CLUTCHES

BRAKE BANDS

NEW & USED 6" - 4" PUMP LINERS &  
PUMP PARTS

AIR VALVES

*NEW ELECTRICAL SUPPLIES:*

30,60 & 100 AMP APPLETON  
POWERTITE QUICK CONNECTOR  
PLUGS • APPLETON & CROUSE &  
HINDS EXPLOSION PROOF 4-WAY,  
3-WAY BOXES, 90'S, TEE'S •  
CHORD GRIPPERS• LARGE ASST'  
OF METAL CONDUIT FITTINGS •  
WOODHEAD WEATHERPROOF  
CHORD CONNECTORS & FITTINGS  
• SQUARE D CONTACTS &  
BREAKERS • APPLETON  
FLOOD LIGHTS • SQUARE D PUMP  
CONTROL PANELS •  
NEW ASST' OF WIRE

### DRILL PIPE

71,083' (2,293 JTS) 4-1/2" GRADE G  
16.60# RANGE 2 DRILL PIPE W/ 4-1/2"  
XH CONN

9,641' (311 JTS) 4-1/2" GRADE E  
16.60# RANGE 2 DRILL PIPE W/ 4-1/2"  
XH CONN

10,974' (354 JTS) 4-1/2" STRUCTURAL  
DRILL PIPE

### DRILL COLLARS

(50+) 8" DRILL COLLARS W/  
6-5/8" REG. CONNECTIONS  
(SOME UNUSED)

(140+) 6" DRILL COLLARS W/ 4-1/2"  
XH CONNECTIONS

(27+) 5" DRILL COLLARS W/ 3-1/2" IF  
CONNECTIONS

## YARD #3 - HOBBS, NM

(50)-6-1/2" & (15)-8" DRILL COLLARS  
APPROX. 22,000'- 4-1/2" XH 16.60, G-  
105 DRILL PIPE



DY2-YD2 • SURPLUS HOUSES



DY2-YD2 • SURPLUS PUMPS RF-800's



DY1-YD1 • IRON DERRICK MAN



DY2-YD2 • BOPs



DY2-YD2 • SURPLUS DUPLEX PUMPS



DY2-YD2 • CAT 3512



DY2-YD2 • SURPLUS MASTS



DY2-YD2 • 500 BBL WATER TANKS



DY2-YD2 • 4-1/2" G-16.60#



DY2-YD1 • GAS BUSTER



DY2-YD2 • CAT D379s



DY2-YD3 • 4-1/2" G-16.60#



DY2-YD2 • CLOSING UNITS



DY2-YD2 • MUD PITS

## YARD #5 - PECOS, TX

(30)-6-1/2" & (5)-8" DRILL COLLARS  
APPROX. 18,000'- 4-1/2" XH 16.60, G-105 DRILL PIPE

## YARD #7 - HOUSTON, TX

### DRILLING COMPONENTS

NOV 2012 HYDRAULIC POWER UNIT  
P/B 60 HP ELECTRIC MOTOR

5-1/4" X 40" "HEX" KELLY W/ 6-5/8" REG. BOX X 4-1/4" XH PIN

KELLY 4-1/4" HEX X 40.05 W/6-5/8 REG BOX W/ 4-1/2" X H PIN

FIVE STAR 2500 WIRELINE UNIT  
W/COUNTER

CAMERON, 3-1/16", 10K TYPE FC  
CHOKE MANIFOLD

CAMERON 3-1/16" 5K TYPE FC,  
CHOKE MANIFOLD

(2) IR MODEL 4000# AIR HOIST  
ON PEDESTALS

(3) 5,000# CHOKE MANIFOLDS

SWACDO SHALE SHAKERS

SWACO 2-CONE DESANDER

SWACO 16-CONE DESILTER

(5) CENTRIFUGAL PUMPS

TRUCK HOOK DUMP BIN

PIPE RACKS

ELECTRIC GOLF CART W/ CHARGER  
(BATTERIES NEW  
1 YR AGO)

## DAY 3

## YARD #1 - MIDLAND, TX

### WELL SERVICE / SWAB RIGS

1980 COOPER LTO-550, 5 AXLE,  
BACK-IN W/S RIG, P/B DETROIT  
S-60 W/ ALLISON 5860 TRANS,  
104'-240 #MAST, SR 122  
HYDROMATIC BRAKE

1981 COOPER LTO-350, 4 AXLE,  
BACK-IN W/S RIG, P/B DETROIT  
S-60 W/ ALLISON 4460 TRANS,  
97' - 200 # MAST, 15" DBL  
HYDROMATIC BRAKE

1980 SKYTOP, 4 AXLE, BACK-IN W/S  
RIG, P/B DETROIT S-60 W/ ALLISON  
5860 TRANS,  
96' - 210 # MAST, 15" DBL  
HYDROMATIC BRAKE

(2) 1982 FRANKS 1287-160, 4 AXLE,

BACK-IN W/S RIG, P/B DETROIT  
S-60 W/ ALLISON 750 TRANS,  
96' - 215 # MAST, 15" DBL  
HYDROMATIC BRAKE

1980 FRANKS 1287-160, 4 AXLE,  
BACK-IN W/S RIG, P/B DETROIT  
S-60 W/ ALLISON 750 TRANS,  
96' - 215 # MAST, 15" DBL  
HYDROMATIC BRAKE

1978 SKYTOP, 4 AXLE, BACK-IN W/S  
RIG, P/B DETROIT S-60 W/ALISON  
5860 TRANS,  
96'-210 # MAST, 15" DBL  
HYDROMATIC BRAKE

FRANKS 1058 D/D SINGLE POLE W/S  
RIG, P/B DETROIT 8V-71 W/ ALLISON  
4460 TRANS, 13"X10" CABLE RAISED  
& SCOPED SINGLE POLE MAST, MTD  
ON FRANKS  
3-AXLE CARRIER

WILSON 3-AXLE BACK-IN  
SWAB RIG P/B DETROIT 6V-71  
W/ ALLISON 750 TRANS,  
40'-30,000# MAST

### COIL TUBING UNIT

1993 LOADCRAFT MAST STYLE COIL  
TUBING UNIT, P/B CAT 3406,  
OPERATORS CABIN, GASO TRIPLEX  
PUMP, 1 1/4" TUBING

### WINCH / POLE TRUCKS

2007 KENWORTH MODEL C500B  
TWIN STEER GIN POLE/WINCH  
TRUCK, P/B CAT C15, 18 SPEED  
TRANSMISSION, 422" WB, 330"  
OILFIELD BED, BRADEN 125 65-TON  
& 40 TON HYD WENCH

2006 INT'L 7300 S/A FLAT BED TRUCK  
P/B DT466, 10-SPD TRANS, TEREX  
165.2E KNUCKLE BOOM WINCH &  
HYDRAULIC BED WONCH

### TRUCKS

2012 KENWORTH W900 TRI-AXLE  
SLEEPER P/B CUMMINS ISX15, 18-  
SPD TRANS, 8-BAG AIR RIDE

2008 PETERBILT 379 T/A KILL TRUCK  
PB CUMMINS DIESEL  
ENG, GARDNER DENVER TEE  
TRIPLEX PUMP

2011 PETERBILT 367, 4-AXLE P/B  
CUMMINS ISX, 18-SPD TRANS W/  
4788GAL ALUMINUM TANK

2011 FREIGHTLINER CASCADIA T/A  
SLEEPER P/B DETROIT DD15, 10-  
SPD TRANS

2010 PETERBILT 386 T/A  
SLEEPER P/B CUMMINS ISX 15,  
10-SPD TRANS

(2) 2012 2011 KENWORTH T800 P/B  
CUMMINS ISX, 10-SPD TRANS

(3) 2008 PETERBILT 388 T/A  
SLEEPERS P/B CAT C-15, AUTO  
TRANS

2010 FREIGHTLINER CORONADO T/A  
SLEEPER P/B DETROIT SERIES-60,  
10-SPD TRANS

(6) 20007-1994 FREIGHTLINER T/A  
SLEEPERS & DAY CABS

(1) 2014 MACK GU713 T/A TRUCK

(3) 2013 MACK GU713 T/A TRUCKS

(2) 2012 MACK GU713 T/A TRUCKS

(8) 2011 MACK GU713 T/A TRUCKS

(1) 2010 MACK GU713 T/A TRUCKS

(4) 2009 MACK GU713 T/A TRUCKS

(1) 2007 MACK GU713 T/A TRUCK

(3) 2011 MACK GU813 T/A TRUCKS  
W/WET KITS

(2) 2008 MACK CHU613 T/A SLEEPER  
TRUCKS

(4) 2007 MACK CV713 T/A TRUCKS

(4) 2006 MACK CV713 T/A TRUCKS

(2) 2005 MACK CV713 T/A TRUCKS

(3) 2004 MACK CV713 T/A TRUCKS

(1) 2003 MACK CV713 T/A TRUCK

(3) 2007 MACK CTP713 T/A TRUCKS

MACK RD690S T/A DUMP TRUCK

2006 CHEVROLET C5500 4X4 CREW  
CAB FLAT BED TRUCK P/B DURAMAX  
DIESEL

### VACUUM / KILL TRAILERS

(2)2014-2012 STEPHENS 150/  
ALUM KILL

(2) 2007-2006 DRAGON KILL

(6) 2014-2012 DRAGON 150/  
ALUM VAC

2006 TROXEL 150/ALUM VAC

2009 TROXEL 130/STEEL VAC

2005 GAYLEAN 130/STEEL VAC

(7) 2011-2001 DRAGON 130/  
STEEL VAC

(3) 2007-2004 PROCO 130/  
STEEL VAC

(2) 2002-2000 PIONEER 130/  
STEEL VAC

1990 FRUEHAUF VAC

### TRAILERS

2001 LIDDEL HYDRAULIC  
DETACH 60 TON, 53'X108",  
AIR RIDE, TRI-AXLE

2008 DRAGON 500 BBL S/A



## FRAC TANK

1976 **HOBBS** FRAC SAND  
KING GOOSNECK TRAILER  
(4) 2013-2008 **CARGOMATE**  
DOGHOUSES

(3) 2008-2004 **PACE AMERICAN**  
DOGHOUSES

(2) 2013,2007 **CARGOCRAFT**  
DOGHOUSES

1991 **BIGTEX** UTILITY TRAILER

1982 **HAYNES** DOGHOUSE

2000 **WILSON** PIPE TRAILER

## CONSTRUCTION

2009 **CATERPILLAR** 140M  
MOTORGRADER

2006 **J/G GRADALL** G6-42A  
MATERIAL HANDLER

## PICKUPS / LIGHT VEHICLES

OVER 50+ **DODGE - GMC -**  
**CHEVROLET** PICKUPS

## PUMPS

**GASO MODEL 3673** TRIPLEX MUD  
PUMP, 2-1/2" X 3-1/2" X 6"  
W/MANIFOLD, SHEAR RELIEF, P/B  
DETROIT 6V-71 DIESEL ENGINE,  
MANUAL TRANS, SKIDDED

(2) **NATIONAL OILWELL JWS-340**, P/B  
DETROIT 8V-92 DIESEL ENGINE,  
SKID MOUNTED

**GARDNER DENVER PAH** TRIPLEX  
MUD PUMPP/B DETROIT 12V-71

(4) CENTRIFUGAL PUMPS, 3" X 2" X  
13" P/B DEUTZ 4-CYL DIESEL  
ENGINE, SGL AXLE TRAILER MTD

## ENGINES / TRANS

(3) DETROIT SERIES 60 DIESEL  
ENGINES

(3) ALLISON 750 TRANS

ALLISON 4460 TRANS

## BOPs / CLOSING UNITS

**TOWNSEND** 7-1/16" 5000# DBL HYD  
BOP W/ 2-7/8" RAMS

(3) **BURNSCO** 3-STATION CLOSING  
UNITS MTD ON T/A GN TRAILERS

## HARDLINE / VALVES & RELATED

LARGE ASSORTMENT OF 4" -3"  
10,000# HARDLINE

LARGE ASSORTMENT OF KEMPER  
4"-3" 10,000# - 15,000# SWIVEL  
JOINTS, INTEGRAL FITTINGS,  
UNIONS, FLOW LINE VALVES

3'-15,000# PLUG VALVES

4' - 3' 10,000# - 15,000# GATE VALVES

## WELL SERVICE TOOLS & RELATED

TRAVELING BLOCKS, TONGS, SLIPS,  
ELEVATORS,  
SAFETY CLAMPS

## LIGHT TOWERS / GENERATORS / AIR COMPRESSORS

(18) DOOSAN LSC S/A PORTABLE  
LIGHT TOWER / GENERATORS

INGERSOLL RAND 375 CFM AIR  
COMPRESSOR MTD ON S/A TRAILER

INGERSOLL RAND 185 CFM  
AIR COMPRESSOR MTD ON  
S/A TRAILER

## YARD #2 - ARTESIA, NM

## CRANES

1987 **LINKBELT HTC-11100**  
100-TON HYDRAULIC TRUCK CRANE,  
33' SWING AWAY, 102' JIB, BALL &  
BOOM DOLLY W/JEEP

1979 **GROVE TMS 300** 35-TON  
HYDRAULIC TRUCK CRANE,  
136' 4-SECTION BOOM, 34' JIB MTD  
ON 4-AXLE CARRIER

## TRUCKS

1991 **MACK RD690S** T/A GIN TRUCK  
P/B MACK EM6-300L DIESEL, 7-SPD  
TRANS, 290" WB, 22' OILFIELD BED,  
RTB, HR, 21' POLES, (3) WINCHES

1981 **MACK RM688SX** T/A GIN TRUCK  
P/B MACK 6-CYL DIESEL,  
5-SPD TRANS, 322" WB,  
25' OILFIELD BED, RTB, HR, POLES,  
(3) WINCHES

## TRAILERS

(3) 1980 **LUFKIN** 40' T/A FLOATS

1981 **HOBBS** 38' T/A FLOAT

1978 **FRUEHAUF** 45' T/A FLOAT

## MACHINE SHOP EQUIPMENT

BRIGEPOR SERIES II KNEE STYLE  
MILLING MACHINE

MEDALIST-PEERLESS 410  
AUTOMATIC HACK SAW

LANDIS MACHINE CO. PEDESTAL  
GRINDER MODEL:1

PIPE STRAIGHTING MACHINE

## PUMPING UNITS

(2) D-912 PUMPING UNITS

(12) D-80 CABOT & LUFKIN PUMPING  
UNITS

D-640 - SENTRY PUMPING UNIT

D-6 - JENSEN PUMPING UNIT

(5) D-57 - AMERICAN, CABOT,  
EMSCO & LUFKIN PUMPING UNITS

(4) D-40 - ALTEN, BETHLEHEM  
CABOT & LUFKIN PUMPING UNITS

(10) D-320 - AMERICAN,  
BETHLEHEM, NATIONAL & SENTRY  
PUMPING UNITS

(3) D-25 - ALTEN, EMSCO & JENSEN  
PUMPING UNITS

(24) D-228 - CABOT, SENTRY,  
NATIONAL, WEATHERFORD & ALTEN  
PUMPING UNITS

(12) D-160 - AMERICAN, BETHLEHEM &  
LUFKIN PUMPING UNITS

(12) D-114 AMERICAN, BETHLEHEM &  
LUFKIN PUMPING UNITS

PUMPING UNT LADDERS

PUMPING UNIT WEIGHTS  
(NEW & USED)

(10) 8-1/2 X 10 AJAX 42 HP GAS  
MOTORS

## PRODUCTION RELATD EQUIPMENT

1,000,000 BTU STACK PACK HEATER  
(NEW)

750,000 BTU STACK PACK HEATER

(4) 500,000 BTU STACK PACK  
HEATERS (NEW & USED)

250,000 BTU STACK PACK  
HEATER (NEW)

HEATER TREATERS

SEPARATORS

STEEL TANKS

FIBERGLASS TANKS

TANK LANDING PADS,

WALKWAYS & STAIRS

## SUPPLY STORE SURPLUS

WELD ON FITTINGS • BALL VALVES •  
CHECK VALVES • WELL HEADS &  
COMPONENTS • TUBING SUBS •  
FILTERS • HAND TOOLS • SWAB  
MANDERALS • SWAB CUPS • ROD  
ELEVATOR PLATES & PARTS •  
TONG & SLIP DIES • ROLLER CHAIN •  
NIPPLES • BULL PLUGS • SWAGES •  
COUPLINGS • PPE • BOLTS • CABLE  
CLAMPS • HAMMER WRENCHES •  
GASKETS • V-BELTS • HOSES • PIPE  
THREADER COMPONENTS • MUCH,  
MUCH MORE



DY1-YD1 • G.DENVER PY7 TRIPLEX



DY1-YD1 • RIG# 10



DY3-YD1 • WILSON SWAB RIG



DY3-YD2 • 1981 MACK RM688SX



DY3-YD4 • LUFKIN C320D



DY3-YD1 • J/G GRADALL G6-42A



DY3-YD1 • LOADCRAFT COIL TUBING UNIT



DY3-YD1 • 1978 SKYTOP



DY3-YD1 • NATIONAL JWS 340



DY3-YD1 • (50+) PICKUPS



DY3-YD1 • 1982 Franks 1287-160



Permian International  
Energy Services, LLC

P.O. BOX 9850  
Midland, TX 79708

[www.permianint.com](http://www.permianint.com)

# HUGE 3-DAY AUCTION

NO ON SITE BUYER PREMIUM THIS SALE!



DY3-YD1 • (40+) MACK TRUCKS



DY3-YD1 • 1980 COOPER LTO 550



DY3-YD1 • GASO TRIPLEX PUMP



DY3-YD1 • 2001 LIDDEL 60-TON



DY3-YD2 • (90+) PUMPING UNITS



DY3-YD1 • (20+) VAC Trailers



DY3-YD1 • FRANKS 1058



DY3-YD1 • 2011 PETERBILT 367



DY3-YD2 • (15+) AJAX 8-1/2 X 10 MOTORS



DY3-YD1 • 1981 COOPER LTO 350



DY3-YD2 • LINKBELT HTC 11100



COMPLETE LIQUIDATION

**WED/THURS/FRI • MARCH 21/22/23, 2019**  
**MIDLAND, TX • 9AM EACH DAY**