



MIDLAND, TEXAS AUCTION



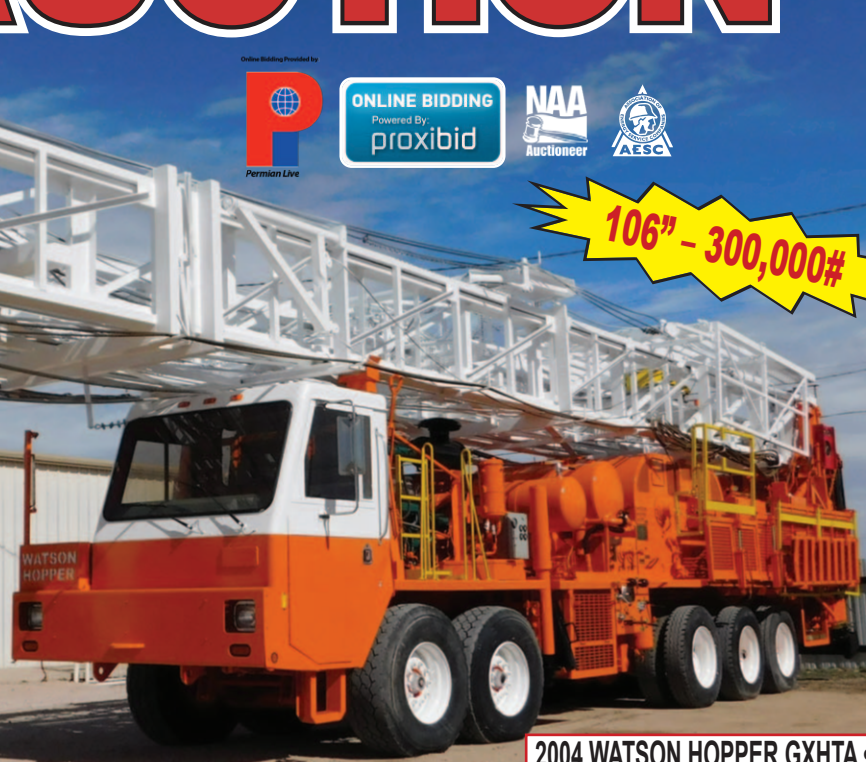
ONLINE BIDDING
Powered By
proxibid



106" - 300,000#

**JOIN US MARCH 2nd
FOR PREVIEW & BBQ
LUNCH ON US!**

Like us on
facebook



2004 WATSON HOPPER GXHTA • YD 2

5% Buyer Premium On Site • 7% Buyer Premium On Line • Auctioneers | Sixto Paiz - #17750 • Eric Dyess - TX Lic# 16926

TUESDAY • MARCH 3rd, 2020 9:00A.M. (CST) @ PERMIAN INTERNATIONAL ENERGY SERVICES



2012 PETERBILTS • YD 1

**DRILLING RIGS
DRILLING TOOLS
DRILL COLLARS
DRILL PIPE**



2006 WATSON HOPPER GXHTA • YD 2

**WELL SERVICE RIGS
WELL SERVICING TOOLS
TRUCKS • PICKUPS
TRAILERS**



WATSON HOPPER GXHTA • YD 2



2017-2005 PICKUPS • YD 1

WWW.PERMIANINT.COM

or Call Steve Taylor (432-448-0406) OR Eric Dyess (940-452-4132)

2008 PETERBILT 388 • YD 1



2011-2008 STEPHENS 200 BBL • YD 1



3,000# MANUAL BOP'S • YD 1



GENERATOR HOUSE • YD 2



SURPLUS BLOCKS & SWIVELS • YD 2



SURPLUS BOP'S • YD 2

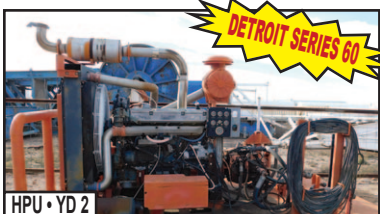


DETROIT SERIES 60

3NB 500C TRIPLEX • YD 2



500 BBL FRAC TANKS • YD 1



DETROIT SERIES 60

HPU • YD 2

YARD #1 - MIDLAND, TX

DIRECTIONS: 4006 SCR 1232 MIDLAND, TX 79706. EXIT 131 OFF I-20, GO SOUTH .5 MILE, YARD ON RIGHT.

CHECKOUT: MON-FRI 8AM-5PM, THRU MARCH 20TH, **SATURDAY BY APPT ONLY.**

CONTACT: BUBBA KOINER 940-224-8071

WELL SERVICE RIGS

(4) **FRANKS 1287/160 D/D BACK IN WELL SERVICE RIGS**, P/B DETROIT S-60 DIESEL ENGINES, ALLISON 4460 TRANS., 96'-150,000# TRISCOPE MASTS, DBL HYDROMATIC BRAKES, ALL MTD ON 4-AXLE CARRIERS

WICHTEX DBL DRUM, DBL POLE PULLING UNIT, P/B CUMMINS 5.9L DIESEL DECK ENG, MTD ON 1999 CRANE CARRIER T/A TRUCK P/B DETORIT SERIES 60 (124,467 MILES)

PUMPS

OILWELL A1100PT 1000HP TRIPLEX MUD PUMP, HYDRIL K-20, 5000#, PULSATION DAMPENERS, 5X6 CHARGING PUMP P/B 40HP ELECTRIC MOTOR, ROD OILER PUMP, SHEAR RELIEF, MUD GAUGE, 20' L VIB HOSE, MUD VALVES

GARDNER DENVER FXX 5-1/2" X 8 DUPLEX PUMP GEAR END

ENGINES

CAT 3412E DIESEL ENGINE, GAUGES, RADIATOR, AIR START, MTD ON 8'W X 30' L SKID

(2) **CAT C-18 DIESEL ENGINE** W/ AIR START, RADIATORS, GAUGES, OIL WORKS C-195-100 TORQUE CONVERTERS

CAT 3508C DIESEL ENGINE W/RADIATOR, AIR START, CAT GAUGE PANEL

CAT 3508 DIESEL ENGINE, AIR START NATIONAL C-300-64 TORQUE CONVERTER, APPROX 6,000 HRS

HOT OIL TRUCKS

2006 MACK CTP713 T/A HOT OIL TRUCK, P/B MP7 DIESEL ENGINE, MAXI TORQUE 10- SPD TRANS., ALLIED OILFIELD 80 BBL HOT OIL UNIT, GARDNER DENVER TEE TRIPLEX PUMP, MASTER 2X3X8 CHARGE PUMP, (2) 480 GAL PROPANE TANKS, 240,292 MILES

2003 MACK CV713 T/A HOT OIL TRUCK, P/B MACK AI- 900, 9- SPD TRANS., RUSH 80 BBL HOT OIL UNIT, GARDNER DENVER TEE TRIPLEX PUMP, (2) 400 GAL PROPANE TANKS, 251, 180 MILES

TRUCKS

(15) **2014-2011 MACK CXU613 T/A HAUL TRUCKS**, P/B MP8 DIESEL ENGINES, 10- SPD EATON FULLER TRANS., 188" WB, BLACKMER PETRO PUMPS, 5TH WHEEL, AIR RIDE SUSP., 300,000 – 600,000 MILES

2013 PETERBILT 389 T/A SLEEPER TRUCK, P/B CUMMINS ISX15, 485HP DIESEL ENGINE, 18- SPD TRANS., 255"WB, WALK IN SLEEPER, 5TH WHEEL, 264,835 MILES

(2) **2012 PETERBILTS 367 T/A HAUL TRUCKS**, P/B ISX15 485HP DIESEL ENGINES, 10- SPD EATON FULLER TRANS., 215" WB, 13K# STEER AXLE, 40K# DRIVE AXLES, W/ WET KITS, 5TH WHEEL, 276,976 MILES & 364,620 MILES

2008 PETERBILT 388 T/A HAUL TRUCK, P/B CAT C15 DIESEL ENGINE, 13- SPD EATON FULLER TRANS., 230"WB, LIQUID CONTROL METER, BLACKMER PETRO PUMP, 5TH WHEEL, AIR RIDE SUSP.

2006 PETERBILT T/A HAUL TRUCK, P/B CAT C15 DIESEL ENGINE, 10- SPD EATON FULLER TRANS., 200"WB, 12K# STEER, 40K# DRIVE AXLES, 5TH WHEEL, LS SUSP., 709,577 MILES

2006 KENWORTH T800 T/A HAUL TRUCK, P/B CAT C13 DIESEL ENGINE, 10- SPD EATON FULLER TRANS., 225"WB, 12K# STEER, 40K# DRIVE AXLES, 5TH WHEEL, AIR RIDE SUSP., 929,280 MILES

2005 KENWORTH T800 T/A HAUL TRUCK, P/B CAT C13 DIESEL ENGINE, 10- SPD EATON FULLER TRANS., 198"WB, LIQUID CONTROLS, PETRO PUMP SYSTEM, 5TH WHEEL, AIR RIDE SUSP., 278,805 MILES

2005 KENWORTH T800 T/A HAUL TRUCK, P/B CUMMINS ISX 500HP DIESEL ENGINE, 13- SPD EATON FULLER TRANS., 180" WB, PETRO PUMPING PARTS, 5TH WHEEL, AIR RIDE SUSP., 767,875 MILES

1996 FORD F900 COMBINATION PUMP/VAC TRUCK, P/B L10 CUMMINS, AUTO TRANS., 230"WB, VAC-CON PUMPING UNIT, DEBRI TANK, 1,300 GAL. FRESH WATER TANK, VPB70 TRIPLEX PUMP, HYDROSTAT BLOWER, SHOWS 410,211 MILES

TRAILERS

(4) **2011-2008 STEPHENS 200 BBL T/A ALUMINUM CRUDE OIL TRAILERS** W/ HOSE SLEEVES, SIDE MTD LADDERS, LANDING GEAR, TOOL BOXES, AIR RIDE SUSP., ALUMINUM WHEELS, 11R-24.5" TIRES

(2) **2010-2009 HEIL 200 BBL T/A ALUMINUM CRUDE OIL TRAILERS** W/ HOSE SLEEVES, SIDE MTD LADDER, LANDING GEAR, TOOL BOXES, AIR RIDE SUSP., 11R-22.5" TIRES

1990 TRAILMASTER 200 BBL T/A ALUMINUM CRUDE OIL TRAILER W/ HYD TRANSFER PUMP, HOSE SLEEVE, SIDE MTD LADDER, LANDING GEAR, TOOL BOX, 11R-24.5" TIRES

1987 FRUEHAUF 200 BBL T/A ALUMINUM CRUDE OIL TRAILER W/ HYD TRANSFER PUMP, HOSE SLEEVE, SIDE MTD LADDER, LANDING GEAR, 11R-22.5" TIRES

2007 WADSWORTH IND T/A 3 COMP., 95 BBL ACID TRAILER, SIDE MTD WALKWAY, HOSE TROUGHS, LANDING GEAR, AIR RIDE SUSP.

2018 LOAD TRAIL T/A DUAL WHEEL GN TRAILER, 8'W X 24'L LOAD DECK, 5'L DOVETAIL, FOLD DOWN RAMPS, 8'L NECK, DUAL LANDING GEAR, BRAKES

2012 CM MODEL- CMC5240-12, 8'W X 12'L T/A CREW TRAILER

PICKUPS / SUV

2017 CHEVROLET 2500 HD CREW CAB LONG BED PICK UP, P/B VORTEC 6.0L GAS ENGINE, AUTO TRANS., PS, PB, PW, PL, 87,274 MILES

(16) **2014-2005 FORD F150 PICK UPS**, P/B TRITON V8 GAS ENGINES, AUTO TRANS., A/C, PS, PB

2014 FORD E SERIES PASSENGER VAN, P/B FORD ECONOLINE 5.4L GAS ENGINE, AUTO TRANS., 298,014 MILES

CONSTRUCTION

CASE 580L 4X4 BACKHOE, P/B 4- CYL DIESEL ENGINE, SHUTTLE SHIFT TRANS., 7'W FRONT BUCKET, 22" REAR BUCKET, 7,308 HRS

2002 JOHN DEERE 644H WHEEL LOADER VIN# DW644HX580787

1998 JOHN DEERE 544H WHEEL LOADER VIN# DW544HX569737

DRILL COLLARS

(5) **8-1/4" OD X 2-7/8" ID SPIRAL DRILL COLLARS**, SLIP & ELEVATOR RECESS W/ 6-5/8" REG CONNS

(2) **6-1/2" OD X 2-1/4" ID SPIRAL DRILL COLLARS** W/ 4-1/2" IF CONNS, SGL RECESSED (LIKE NEW)

(16) **6-1/2" OD X 2-7/8" ID SPIRAL DRILL COLLARS** W/ 4-1/2" X-HOLE CONNS, SLIP RECESS

(7) **6-1/4" OD X 2-7/8" ID SPIRAL DRILL COLLARS** W/ 4-1/2" X-HOLE CONNS, SLIP RECESS

(20) 4-3/4" OD X 2-1/4" ID SPIRAL DRILL COLLARS W/ 3-1/2" IF CONNS, SLIP RECESS ONLY, (LIKE NEW)

(15) 3-1/2" OD X 1-9/16" ID PLUS SLICK DRILL COLLARS W/ 2-3/8" IF CONNS

(51) 3-1/2" OD X 1-1/2" ID SLICK LIGHTS WEIGHT DRILL COLLARS W/ 2-3/8" IF LEFT HAND CONNS

DRILL PIPE

12, 690 FT. (401) JTS 5" G-105 19.50# DRILL PIPE W/ 4-1/2" IF CONNS, 6-5/8" X 6-3/4" X 2" LTS TOOL JOINTS (NEW W/ MILL CERTS)

1,800 FT. (58) JTS GRANT PRIDECO 5", 19.50# RNG 2, S-135 DRILL PIPE

(20) 3-1/2" OD CONVENTIONAL HEVI-WATE DRILL PIPE W/ 3-1/2" IF CONNS

(19) 3-1/2" OD SPIRAL HEVI-WATE DRILL PIPE W/ 3-1/2" IF CONNS

RNG 3 DRILL PIPE

2,160 FT (27) JTS 4-1/2" RNG 3 BN DRILL PIPE

RNG 1 DRILL PIPE

3,410 FT. (110) JTS 3-1/2" RNG 1 SLOTTED DRILL PIPE W/ 3-1/2" IF CONNS

TANKS

(10) 10.6 DIA X 32'L 500 BBL WATER TANKS, LADDERS, 4' PORCH, 2X3 CENT PUMPS P/B ELECTRIC MOTORS, SKIDDED

POWER SWIVELS

EVCO 2.5 POWER SWIVEL, P/B CUMMINS B3.9-P 4- CYL DIESEL ENGINE, HYD PUMP, HOSE REELS & TANK DIESEL DAY TANK, TOOL BOX, ALL MTD ON T/A GOOSENECK TRAILER

BOWEN 2.5 POWER SWIVEL W/ HOSES, HOSE REELS, REMOTE CONTROL P/B DETROIT 6-71 DIESEL ENGINE, 1,162 HRS, MTD ON T/A GN TRAILER

LOGAN OIL TOOLS 2.5 POWER SWIVEL, P/B CAT C4.4L DIESEL ENGINE, HYD PUMP, PARKER HYD UTILITY WINCH, (3) HYD HOSE REELS, CONTROL PANEL, AIR TANK, DIESEL DAY TANK, HYD TANK, TOOL BOX, BATT BOX, ALL MTD ON T/A GOOSENECK TRAILER

DRILLING & WELL SERVICE TOOLS

ELEVATOR LINKS, BLOCKS, TONGS, AIR SLIPS, ROD ELEVATORS, HAND TOOLS, ETC.

YARD #2 - HOBBS, NM

DIRECTIONS: 221 RYCO LN. HOBBS, NM 88240 (TRIFECTA SOLUTIONS)

CHECKOUT: MONDAY-FRIDAY 8AM-5PM, THRU MARCH 20TH. **SATURDAY BY APPT ONLY.**

CONTACT: HUMBERTO 575-602-0071

WELL SERVICE RIGS

2004 WATSON HOPPER GXHTA D/D BACK IN W/S RIG, P/B DETROIT S-60 DIESEL ENGINE, ALLISON 5600 TRANS., 106'-300,000 # SHL TELESCOPING MAST, DISC BRAKE, ALL MTD ON 5-AXLE CARRIER (RIG 16)

1986 WATSON HOPPER GXHTA D/D BACK IN W/S RIG, P/B DETROIT S-60 DIESEL ENGINE, ALLISON 5860 TRANS., 96'-260,000 # SHL TELESCOPING MAST, 15" PARMAC HYDROMATIC BRAKE, ALL MTD ON 5-AXLE CARRIER (RIG 5)

1985 WATSON HOPPER GXHTA D/D BACK IN W/S RIG, P/B DETROIT S-60 DIESEL ENGINE, ALLISON 5860 TRANS., 96- 260,000 # SHL TELESCOPING MAST, HYDROMATIC BRAKE, ALL MTD ON 5-AXLE CARRIER (RIG 10)

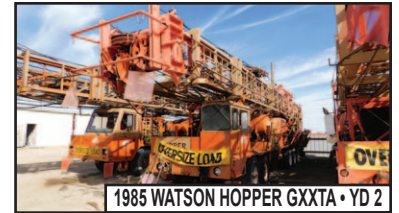
1982 WATSON HOPPER GXHTA D/D BACK IN W/S RIG, P/B DETROIT S-60 DIESEL ENGINE, ALLISON 5860 TRANS., 96'-260,000 # SHL TELESCOPING MAST, 15" DBL HYDROMATIC BRAKE, ALL MTD ON 5-AXLE CARRIER (RIG 1)



WELL SERVICE TOOLS • YD 1



12,690' 5" G-105 19.50# • YD 1



1985 WATSON HOPPER GXHTA • YD 2



200 TON SUBSTRUCTURE • YD 2



4- STATION CLOSING UNIT • YD 2



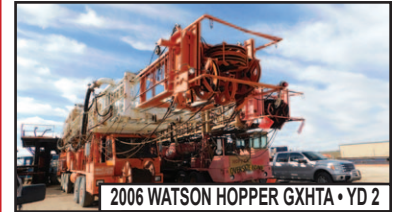
2160' 4-1/2" RNG 3 • YD 1



2006 SJ PETRO XJ500 • YD 2



2014-2011 MACK CU613'S • YD 1



2006 WATSON HOPPER GXHTA • YD 2



AUCTIONS

1-432-694-2018

Office & Yard:
4006 SCR 1232
Midland, TX 79706

www.piauction.com
www.permianint.com

AUCTION INFORMATION

Date & Time

Tuesday March 3rd, 2020 @ 9:00AM (CST)

Auction Location - Midland, TX

Permian International Auctions
4006 SCR 1232 • Midland, TX 79706

Airport

Midland International Air & Space Port.
Served by major airlines and car rental companies

Other Hotels

Best Western Midland Suites
432-218-7549

Holiday Inn & Suites Midland S-I-20
432-695-9020
Country Inn & Suites 432-218-7980
Comfort Inn 432-695-6900
Quality Inn 520-505-2281

TERMS OF SALE

All bidders must register and provide proper identification. All purchases must be PAID IN FULL on sale date before equipment will be released. Acceptable forms of payment include Cashier's Check, Travelers Checks, Wire Transfer or Personal/Company Check Accompanied by BANK LETTER

OF GUARANTEE. No drafts will be accepted. All printed information regarding this sale is merely a guide, subject to change, and neither the auction Company, Sellers, nor Publishers shall be liable for any errors in this brochure. All items will be sold "AS IS, WHERE IS, WITH ALL FAULTS" and without guarantee or warranty of any kind, either expressed or implied.

TAX NOTICE

Purchasers who are tax exempt MUST provide a copy of their SALES and USE TAX PERMIT at the time of BIDDER REGISTRATION. The company Federal Identification Number, or for a proprietorship, the purchaser's social security number will also be required at registration. **BRING A COPY OF YOUR SALES AND USE TAX PERMIT!**

ABSENTEE BIDS

Absentee Bids Only Allowed with **50% DEPOSIT OF MAXIMUM BID and WRITTEN INSTRUCTIONS to Midland Office 24 HOURS PRIOR TO AUCTION, NO EXCEPTIONS.**
Preview Starting February 28, 2020





FRANKS 1287/160 BACK IN W/S RIGS • YD 1

3 of 4



2013 PETERBILT 389 • YD 1



2.5 POWER SWIVEL • YD 1



400 BBL MUD SYSTEM • YD 2



1986 WATSON HOPPER GXHTA • YD 2



2003 MACK CV713 HOT OIL • YD 1



1996 FORD F900 HYDRO VAC • YD 1



WICHTEX DBL POLE • YD 1



2.5 POWER SWIVELS • YD 1



CREW TRAILERS • YD 1

AUCTION

1982 WATSON HOPPER GXHTA D/D BACK IN W/S RIG, P/B DETROIT S-60 DIESEL ENGINE, ALLISON 5860 TRANS., 96- 260,000 # SHL TELESCOPING MAST, 15" PARMAC HYDROMATIC BRAKE, ALL MTD ON 5- AXLE CARRIER (RIG 11)

1976 WATSON HOPPER GXHTA D/D BACK IN W/S RIG, P/B DETROIT S-60 DIESEL ENGINE, ALLISON 5860 TRANS., 96- 180,000# SHL TELESCOPING MAST, 15" PARMAC HYDROMATIC BRAKE, ALL MTD ON 4- AXLE CARRIER (RIG 6)

WELL SERVICE TOOLS

BLOCKS, ELEVATOR LINKS, TUBING AIR SLIPS, TUBING TONGS, ROD TONGS, PUMPS, TUBING ELEVATORS, ROD HOOKS, ROD ELEVATORS, WEIGHT INDICATORS, MISC. TOOLS

DRILLING RIGS

(2) 2006 HOPPER GXHTA DRILLING RIGS, P/B DETROIT S-60 DIESEL ENGINE, HOPPER 112' - 300,000# DERRICK MTD ON 5-AXLE HOPPER CARRIER

18'L X 16'W X 12'H - 200 TON BOX SUBSTRUCTURE

(2) 3NB 500C TRIPLEX MUD PUMP P/B DETROIT S-60

400BBL MUD PIT W/ 40 BBL PREMIX

(2) 500BBL ROUND WATER TANKS

150KW ELECTRIC GENERATOR P/B CAT

3306, 230KW ELECTRIC GENERATOR

P/B CAT 3406, 20-1/2" HYDRAULIC DRIVEN ROTARY TABLE

11"-3,000# SHAFFER TYPE A DBL HYDRAULIC BOP

11"-3,000# SHAFFER ANNULAR BOP

3,000# CHOKE MANIFOLD

5-STATION CLOSING UNIT

10' X 30' TOP DOG HOUSE

10' X 30' BOTTOM DOG HOUSE

2006 SJ PETRO MODEL - SJX5470TXJ550 DRILLING RIG, P/B DETROIT S-60 DIESEL ENGINE, ALLISON 5860 TRANS., 105'-220,000 # MAST MTD ON 5-AXLE CARRIER

18'L X 16'W X 12'H - 200 TON BOX SUBSTRUCTURE

3NB 500C TRIPLEX MUD PUMP P/B DETROIT S-60

D-500, DUPLEX MUD PUMP P/B DETROIT S-60

400BBL MUD PIT W/ 40 BBL PREMIX

(2) 500BBL ROUND WATER TANKS

150KW ELECTRIC GENERATOR P/B CAT

3306, 230KW ELECTRIC GENERATOR P/B CAT 3406

20-1/2" HYDRAULIC DRIVEN ROTARY TABLE

11"-3,000# SHAFFER TYPE A DBL HYDRAULIC BOP

11"-3,000# SHAFFER ANNULAR BOP

3,000# CHOKE MANIFOLD

5-STATION CLOSING UNIT

10' X 30' TOP DOG HOUSE

10' X 30' BOTTOM DOG HOUSE

DRILL COLLARS

APPROX. (55) 6-1/4" DRILL COLLARS W/ 4-1/2" X-HOLE CONNS

DRILL PIPE

APPROX. 24,924' FT. (804) JTS 16.60# GRADE E & X DRILL PIPE W/ 4-1/2" X-HOLE CONNS

DRILLING RELATED

BLOCKS

SWIVELS

WIRELINE MACHINES

4- STATION CLOSING UNIT

(2) HYDRIL GK-12-900 13-5/8" - 5,000# ANNULAR BOP'S

(3) 11" - 5,000# ANNULAR BOP'S

SHAFFER 11" - 5,000# DBL HYD BOP W/ 4" PIPE & BLIND RAMS

(2) 11" - 5,000# DBL HYD BOP'S W/ 4-1/2" PIPE & BLIND RAMS

5-1/4" HD SQ DRIVE KELLY BUSHING

DRILLING SPOOLS

DSA'S, WELL HEAD ADAPTERS, GATE VALVES, CHOKE VALVES

TUESDAY • MARCH 3, 2020 • MIDLAND, TEXAS • 9AM (CST)