



# MIDLAND, TEXAS AUCTION



## WEDNESDAY & THURSDAY SEPTEMBER 29th & 30th, 2021

9:00AM (CST) • Preview Starting September 24, 2021

7% Buyer Premium On Line • 5% Buyer Premium On Site

Auctioneers | Sixto Paiz – #17750 • Eric Dyess – TX Lic# 16926



**WELL SERVICE RIGS • WATER WELL RIGS • DRILLING RIGS • HAUL TRUCKS  
TRAILERS • PICKUPS • CONSTRUCTION EQUIPMENT**



[www.PermianInt.com](http://www.PermianInt.com) |

Call Steve Taylor (432-448-0406)  
Eric Dyess (940-452-4132), OR  
Michael Hardwick (432-448-3208)

# DAY ONE

## YARD #1 - MIDLAND, TX

Directions: 4006 SCR 1232 Midland, TX 79706. Exit 131 off I-20, go South 1 mile, yard on Right

Contact: Shawn Johnson 432-269-0225

PREVIEW & CHECKOUT: PREVIEW BEGINNING September 24<sup>th</sup>, CHECKOUT: M-F, 8am- 5pm thru October 15<sup>th</sup>.

### CRANES

1994 LINKBELT HTC-8665 65-TON HYDRAULIC TRUCK CRANE, SHOWS 51432 MILES & 15645 HRS

### CONSTRUCTION

CAT 631 OPEN SCRAPER BOWL MOTORSCRAPER

2014 JOHN DEERE 310SK 4X4 EXTENDAHOE, BACKHOE, LOADER TRACTOR, SHOWS 6,497 HRS

NEW HOLLAND 555E BACKHOE CASE 821B FRONT END LOADER, EROPS P/B 6 CYL DIESEL ENGINE

### SUV / PICKUPS

2016 GMC YUKON XL DENALI 4X4, P/B 6.2L GAS ENGINE, AUTO TRANS., LEATHER SEATS, 95,000 MILES

1997 FORD F350 SINGLE CAB 4X4 FLAT BED GIN POLE TRUCK, P/B POWER STROKE 7.3 DIESEL ENGINE, AUTO TRANS, SHOWS 156,194 MILES

### PETERBILT HAUL TRUCKS

2015 PETERBILT 567 T/A DAY CAB, 220" WB, P/B CUMMINS ISX12-400 DIESEL ENG., 15-SPD TRANS, WET KIT, 4:11 GEAR RATIO, 12,000 FRT AXLE, 20,000 REAR AXLES ONLY 14,966 MILES

2015 PETERBILT 567 T/A DAY CAB, 220" WB, P/B CUMMINS ISX12-400 DIESEL ENG., 15-SPD TRANS, WET KIT, 4:11 GEAR RATIO, 12,000 FRT AXLE, 20,000 REAR AXLES ONLY 15,821 MILES

2015 PETERBILT 567 T/A DAY CAB, 220" WB, P/B CUMMINS ISX12-400 DIESEL ENG., 15-SPD TRANS, WET KIT, 4:11 GEAR RATIO, 12,000 FRT AXLE, 20,000 REAR AXLES ONLY 17,382 MILES

2015 PETERBILT 567 T/A DAY CAB, 220" WB, P/B CUMMINS ISX12-400 DIESEL ENG., 15-SPD TRANS, WET KIT, 4:11 GEAR RATIO, 12,000 FRT AXLE, 20,000 REAR AXLES ONLY 18,911 MILES

2015 PETERBILT 567 T/A DAY CAB, 220" WB, P/B CUMMINS ISX12-400 DIESEL ENG., 15-SPD TRANS, WET KIT, 4:11 GEAR RATIO, 12,000 FRT AXLE, 20,000 REAR AXLES ONLY 20,251 MILES

2015 PETERBILT 567 T/A DAY CAB, 220" WB, P/B CUMMINS ISX12-400 DIESEL ENG., 15-SPD TRANS, WET KIT, 4:11 GEAR RATIO, 12,000 FRT AXLE, 20,000 REAR AXLES ONLY 22,482 MILES

2015 PETERBILT 567 T/A DAY CAB, 220" WB, P/B CUMMINS ISX12-400 DIESEL ENG., 15-SPD TRANS, WET KIT, 4:11 GEAR RATIO, 12,000 FRT AXLE, 20,000 REAR AXLES ONLY 22,598 MILES

2015 PETERBILT 567 T/A DAY CAB, 220" WB, P/B CUMMINS ISX12-400 DIESEL ENG., 15-SPD TRANS, WET KIT, 4:11 GEAR RATIO, 12,000 FRT AXLE, 20,000 REAR AXLES ONLY 23,400 MILES

2015 PETERBILT 567 T/A DAY CAB, 220" WB, P/B CUMMINS ISX12-400 DIESEL ENG., 15-SPD TRANS, WET KIT, 4:11 GEAR RATIO, 12,000 FRT AXLE, 20,000 REAR AXLES ONLY 24,536 MILES

2015 PETERBILT 567 T/A DAY CAB, 220" WB, P/B CUMMINS ISX12-400 DIESEL ENG., 15-SPD TRANS, WET KIT, 4:11 GEAR RATIO, 12,000 FRT AXLE, 20,000 REAR AXLES ONLY 24,710 MILES



2015 PETERBILT 567 T/A DAY CAB, 220" WB, P/B CUMMINS ISX12-400 DIESEL ENG., 15-SPD TRANS, WET KIT, 4:11 GEAR RATIO, 12,000 FRT AXLE, 20,000 REAR AXLES ONLY 25,872 MILES

2015 PETERBILT 567 T/A DAY CAB, 220" WB, P/B CUMMINS ISX12-400 DIESEL ENG., 15-SPD TRANS, WET KIT, 4:11 GEAR RATIO, 12,000 FRT AXLE, 20,000 REAR AXLES ONLY 26,527 MILES

2015 PETERBILT 567 T/A DAY CAB, 220" WB, P/B CUMMINS ISX12-400 DIESEL ENG., 15-SPD TRANS, WET KIT, 4:11 GEAR RATIO, 12,000 FRT AXLE, 20,000 REAR AXLES ONLY 27,763 MILES

2015 PETERBILT 567 T/A DAY CAB, 220" WB, P/B CUMMINS ISX12-400 DIESEL ENG., 15-SPD TRANS, WET KIT, 4:11 GEAR RATIO, 12,000 FRT AXLE, 20,000 REAR AXLES ONLY 29,888 MILES

2015 PETERBILT 567 T/A DAY CAB, 220" WB, P/B CUMMINS ISX12-400 DIESEL ENG., 15-SPD TRANS, WET KIT, 4:11 GEAR RATIO, 12,000 FRT AXLE, 20,000 REAR AXLES ONLY 30,233 MILES

2015 PETERBILT 567 T/A DAY CAB, 220" WB, P/B CUMMINS ISX12-400 DIESEL ENG., 15-SPD TRANS, WET KIT, 4:11 GEAR RATIO, 12,000 FRT AXLE, 20,000 REAR AXLES ONLY 30,297 MILES

2015 PETERBILT 567 T/A DAY CAB, 220" WB, P/B CUMMINS ISX12-400 DIESEL ENG., 15-SPD TRANS, WET KIT, 4:11 GEAR RATIO, 12,000 FRT AXLE, 20,000 REAR AXLES ONLY 30,423 MILES

2015 PETERBILT 567 T/A DAY CAB, 220" WB, P/B CUMMINS ISX12-400 DIESEL ENG., 15-SPD TRANS, WET KIT, 4:11 GEAR RATIO, 12,000 FRT AXLE, 20,000 REAR AXLES ONLY 31,504 MILES

2015 PETERBILT 567 T/A DAY CAB, 220" WB, P/B CUMMINS ISX12-400 DIESEL ENG., 15-SPD TRANS, WET KIT, 4:11 GEAR RATIO, 12,000 FRT AXLE, 20,000 REAR AXLES ONLY 44,131 MILES

2014 PETERBILT 588 T/A DAY CAB, 250" WB, P/B PACCAR 12.9L 485HP DIESEL ENG., 13-SPD TRANS, WET KIT, 3:70 GEAR RATIO, 12,000# FRONT AXLE, 20,000# REAR AXLES ONLY 4,720 MILES

2014 PETERBILT 588 T/A DAY CAB, 250" WB, P/B PACCAR 12.9L 485HP DIESEL ENG., 13-SPD TRANS, WET KIT, 3:70 GEAR RATIO, 12,000# FRONT AXLE, 20,000# REAR AXLES ONLY 10,596 MILES

2013 PETEBILT 367 T/A SLEEPER, 260" WB, P/B CUMMINS ISX15-485HP DIESEL ENG., 15-SPD TRANS, WET KIT, 3:70 GEAR RATIO, 13,200# FRONT AXLE, 20,000# REAR AXLES ONLY 24,845 MILES

2013 PETEBILT 367 T/A SLEEPER, 260" WB, P/B CUMMINS ISX15-485HP DIESEL ENG., 15-SPD TRANS, WET KIT, 3:70 GEAR RATIO, 13,200# FRONT AXLE, 20,000# REAR AXLES ONLY 25,952 MILES

2013 PETEBILT 367 T/A SLEEPER, 260" WB, P/B CUMMINS ISX15-485HP DIESEL ENG., 15-SPD TRANS, WET KIT, 3:70 GEAR RATIO, 13,200# FRONT AXLE, 20,000# REAR AXLES ONLY 32,145 MILES

2013 PETEBILT 367 T/A SLEEPER, 260" WB, P/B CUMMINS ISX15-485HP DIESEL ENG., 15-SPD TRANS, WET KIT, 3:70 GEAR RATIO, 13,200# FRONT AXLE, 20,000# REAR AXLES ONLY 34,278 MILES

2013 PETEBILT 367 T/A SLEEPER, 260" WB, P/B CUMMINS ISX15-485HP DIESEL ENG., 15-SPD TRANS, BLOWER, 3:70 GEAR RATIO, 13,200# FRONT AXLE, 20,000# REAR AXLES ONLY 36,411 MILES

2013 PETEBILT 367 T/A SLEEPER, 260" WB, P/B CUMMINS ISX15-485HP DIESEL ENG., 15-SPD TRANS, BLOWER, 3:70 GEAR RATIO, 13,200# FRONT AXLE, 20,000# REAR AXLES ONLY 43,237 MILES

2013 PETEBILT 367 T/A SLEEPER, 260" WB, P/B CUMMINS ISX15-485HP DIESEL ENG., 15-SPD TRANS, 3:70 GEAR RATIO, 13,200# FRONT AXLE, 20,000# REAR AXLES ONLY 43,401 MILES

2013 PETEBILT 367 T/A SLEEPER, 260" WB, P/B CUMMINS ISX15-485HP DIESEL ENG., 15-SPD TRANS, 3:70 GEAR RATIO, 13,200# FRONT AXLE, 20,000# REAR AXLES ONLY 53,615 MILES

2013 PETEBILT 367 T/A DAY CAB, 260" WB, P/B CUMMINS ISX15-485HP DIESEL ENG., 15-SPD TRANS, BLOWER, 3:90 GEAR RATIO, 13,200# FRONT AXLE, 20,000# REAR AXLES ONLY 58,696 MILES



**2013 PETEBILT 367** T/A DAY CAB, 260" WB, P/B CUMMINS ISX15-485HP DIESEL ENG., 15-SPD TRANS, 3:90 GEAR RATIO, 13,200# FRONT AXLE & 20,000# REAR AXLES **ONLY 76,319 MILES**

**2007 PETERBILT 387** T/A SLEEPER VAC TRUCK, P/B C-13 CAT, 13 SPD EATON TRANS., 235" WB, 52K# GVWR, PTO NVE VAC PUMP, 72" SLEEPER

**1999 PETERBILT 379** T/A SLEEPER VAC TRUCK, P/B C-15 CAT, 10 SPD EATON FULLER TRANS., 256" WB, 48K# GVWR, 60" SLEEPER, PTO, CHALLENGER VAC PUMP

### **MACK HAUL TRUCKS**

**2015 MACK CXU613** T/A DAY CAB 220" WB, P/B MACK MP8 415C DIESEL ENG., 10 SPD-TRANS, WET KIT, 3:42 GEAR RATIO, 12,000# FRONT AXLE & 20,000# REAR AXLES **ONLY 19,306 MILES**

**2015 MACK CXU613** T/A DAY CAB 220" WB, P/B MACK MP8 415C DIESEL ENG., 10 SPD-TRANS, WET KIT, 3:42 GEAR RATIO, 12,000# FRONT AXLE & 20,000# REAR AXLES **ONLY 21,472 MILES**

**2015 MACK CXU613** T/A DAY CAB 220" WB, P/B MACK MP8 415C DIESEL ENG., 10 SPD-TRANS, WET KIT, 3:42 GEAR RATIO, 12,000# FRONT AXLE & 20,000# REAR AXLES **ONLY 23,906 MILES**

**2015 MACK CXU613** T/A DAY CAB 220" WB, P/B MACK MP8 415C DIESEL ENG., 10 SPD-TRANS, WET KIT, 3:42 GEAR RATIO, 12,000# FRONT AXLE & 20,000# REAR AXLES **ONLY 26,011 MILES**

**2015 MACK CXU613** T/A DAY CAB 220" WB, P/B MACK MP8 415C DIESEL ENG., 10 SPD-TRANS, WET KIT, 3:42 GEAR RATIO, 12,000# FRONT AXLE & 20,000# REAR AXLES **ONLY 31,108 MILES**

**2014 MACK CXU613** T/A DAY CAB 220" WB, P/B MACK MP8 415C DIESEL ENG., 10 SPD-TRANS, WET KIT, 3:42 GEAR RATIO, 12,000# FRONT AXLE & 20,000# REAR AXLES **ONLY 14,856 MILES**

**2014 MACK CXU613** T/A DAY CAB 220" WB, P/B MACK MP8 415C DIESEL ENG., 10 SPD-TRANS, WET KIT, 3:42 GEAR RATIO, 12,000# FRONT AXLE & 20,000# REAR AXLES **ONLY 16,650 MILES**



**2014 MACK CXU613** T/A DAY CAB 220" WB, P/B MACK MP8 415C DIESEL ENG., 10 SPD-TRANS, WET KIT, 3:42 GEAR RATIO, 12,000# FRONT AXLE & 20,000# REAR AXLES **ONLY 17,544 MILES**

**2014 MACK CXU613** T/A DAY CAB 220" WB, P/B MACK MP8 415C DIESEL ENG., 10 SPD-TRANS, WET KIT, 3:42 GEAR RATIO, 12,000# FRONT AXLE & 20,000# REAR AXLES **ONLY 22,461 MILES**

**2014 MACK CXU613** T/A DAY CAB 220" WB, P/B MACK MP8 415C DIESEL ENG., 10 SPD-TRANS, WET KIT, 3:42 GEAR RATIO, 12,000# FRONT AXLE & 20,000# REAR AXLES **ONLY 23,799 MILES**

**2014 MACK CXU613** T/A DAY CAB 220" WB, P/B MACK MP8 415C DIESEL ENG., 10 SPD-TRANS, WET KIT, 3:42 GEAR RATIO, 12,000# FRONT AXLE & 20,000# REAR AXLES **ONLY 24,239 MILES**

**2014 MACK CXU613** T/A DAY CAB 220" WB, P/B MACK MP8 415C DIESEL ENG., 10 SPD-TRANS, WET KIT, 3:42 GEAR RATIO, 12,000# FRONT AXLE & 20,000# REAR AXLES **ONLY 27,389 MILES**

**2014 MACK CXU613** T/A DAY CAB 220" WB, P/B MACK MP8 415C DIESEL ENG., 10 SPD-TRANS, WET KIT, 3:42 GEAR RATIO, 12,000# FRONT AXLE & 20,000# REAR AXLES **ONLY 27,887 MILES**

### **KENWORTH HAUL TRUCKS**

**2015 KENWORTH T800 4-AXLE** DAY CAB, P/B CUMMINS ISX15 – 485 HP DIESEL ENG., EATON FULLER POWER SHIFT AUTO TRANS, 12,000# FRONT AXLE, 46,000# REAR

**(2) 2014 KENWORTH T800 4-AXLE** DAY CAB, P/B CUMMINS ISX15 – 485 HP DIESEL ENG., EATON FULLER POWER SHIFT AUTO TRANS, 12,000# FRONT AXLE, 46,000# REAR

**(3) 2013 KENWORTH T800 4-AXLE** DAY CAB, P/B CUMMINS ISX15 – 485 HP DIESEL ENG., EATON FULLER POWER SHIFT AUTO TRANS, 12,000# FRONT AXLE, 46,000# REAR

**(7) 2012 KENWORTH T800 4-AXLE** DAY CAB, P/B CUMMINS ISX15 – 485 HP DIESEL ENG., EATON FULLER POWER SHIFT AUTO TRANS, 12,000# FRONT AXLE, 46,000# REAR

**2013 KENWORTH T800** T/A DAY CAB, 245" WB, P/B CUMMINS ISX15-485HP DIESEL ENG., 15-SPD TRANS, WET KIT, 4:30 GEAR RATIO, 13,200# FRONT AXLE, 20,000# REAR AXLES **ONLY 22,019 MILES**

**2013 KENWORTH T800** T/A DAY CAB, 245" WB, P/B CUMMINS ISX15-485HP DIESEL ENG., 15-SPD TRANS, WET KIT, 4:30 GEAR RATIO, 13,200# FRONT AXLE, 20,000# REAR AXLES **ONLY 34,520 MILES**

**2008 KENWORTH T800 4-AXLE** DAY CAB WINCH TRUCK, P/B CUMMINS ISX15 – 485 HP DIESEL ENG., 13-SPD TRANS, 12,000# FRONT AXLE, 46,000# REAR, TULSA 84 WINCH

### **INTERNATIONAL TRUCKS**

**(2) 2012-2011 INTERNATIONAL PROSTAR** T/A SLEEPER VAC TRUCKS, P/B MAX FORCE INTERNATIONAL, 10 SPD EATON FULLER TRANS., CHALLENGER 607 VAC PUMP

**2007 INTERNATIONAL 9200I** T/A SLEEPER HAUL TRUCK, P/B C-13 CAT DIESEL ENGINE, 13 SPD EATON FULLER TRANS., 235" WB, PTO NVE VAC PUMP

**2005 INTERNATIONAL 9400I** T/A SLEEPER HAUL TRUCK, P/B ISX15 CUMMINS, 10 SPD EATON TRANS., 235" WB, 52K# GVWR, 60" SLEEPER

**1989 INTERNATIONAL** T/A RIG TENDER BOB TAIL TRUCK W/ 20' BED, P/B CUMMINS DIESEL ENGINE, 13 SPD TRANS

### **FREIGHTLINER TRUCKS**

**FREIGHTLINER S/A 15' FLATBED** TRUCK, P/B MERCEDES 300 DIESEL ENGINE, AUTO TRANS

**2001 FREIGHTLINER** T/A 60 BBL VAC TRUCK, P/B CUMMINS N-14 DSL ENGINE, 10 SPD TRANS

### **OIL DELIVERY TRUCKS**

**2015 MACK GU713** T/A DAY CAB OIL DELIVERY TRUCK P/B MP7 MACK ENGINE, ALLISON AUTO TRANS., 244"WB, WET KIT, W/ ALMAC 5 COMP. 3400 GAL CAP, TANK BED, (2) PETRO PUMPS W/ HOSE REELS, 5' STAKE BED W/ LIFT GATE, AIR RIDE SUSP.

**2014 MACK GU713** T/A DAY CAB OIL DELIVERY TRUCK P/B MP7 MACK ENGINE, ALLISON AUTO TRANS., 244"WB, WET KIT, W/ ALMAC 5 COMP. 3400 GAL CAP, TANK BED, (2) PETRO PUMPS W/ HOSE REELS, 5' STAKE BED W/ LIFT GATE, AIR RIDE SUSP.

**2012 MACK GU713** T/A DAY CAB OIL DELIVERY TRUCK P/B MP7 MACK ENGINE, ALLISON AUTO TRANS., 244"WB, WET KIT, W/ ALMAC 5 COMP. 3400 GAL CAP, TANK BED, (2) PETRO PUMPS W/ HOSE REELS, 5' STAKE BED W/ LIFT GATE, AIR RIDE SUSP.

**2012 PETERBILT 348** T/A DAY CAB OIL DELIVERY TRUCK P/B PACCAR PX-8 DIESEL ENGINE, AUTO TRANS., 244"WB, WET KIT, W/ 5 COMP. 3400 GAL CAP, TANK BED, (2) PETRO PUMPS W/ HOSE REELS, 5' STAKE BED W/ LIFT GATE, AIR RIDE SUSP.

### **KILL TRUCKS**

**2010 MACK GU813** T/A KILL TRUCK, P/B MACK MP8-455 HP DIESEL ENGINE, 10 SPD TRANS., W/ 2012 GARDNER DENVER TRR TRIPLEX PUMP, (1) MCM 3X4 CENT PUMP, (1) 3X3 CENT CHARGE PUMP

**2010 MACK GU713** T/A KILL TRUCK, P/B MACK MP7 DIESEL ENGINE, 8 SPD TRANS., GARDNER DENVER TEE TRIPLEX PUMP, MISSION MAGNUM 4X3X11 CENT CHARGE PUMP, 3X3 CENT LOAD PUMP





1996 INT'L T/A TRUCK

**CEMENT TRUCK / CEMENT TRAILER**

2007 MACK 4 AXLE CEMENT MIXER TRUCK W/ 3 COMPARTMENTS, SAND, GRAVEL & CEMENT, BLENDED & POURED, 2 WATER TANKS, P/B AI-400 MACK DIESEL ENGINE, 8 SPD TRANS

1982 BUTLER 1500 CU FT T/A BULK CEMENT TRAILER

**YARD #2 - MENTONE, TX**

Directions: 9158 SH-302, Mentone, TX 79754

Contact:

PREVIEW & CHECKOUT: PREVIEW BEGINNING September 24<sup>th</sup>, CHECKOUT: M-F, 8am- 5pm thru October 15<sup>th</sup>.

**CONSTRUCTION**

JD 310D TURBO 4X4 LOADER BACKHOE, SN- T0310DG819382, P/B JD 4039D DIESEL ENGINE, 4 SPD TRANS., ROPS 1.25 TD LOADER BUCKET, 18" BACKHOE BUCKET, OUTRIGGERS

CASE W20B ARTICULATING WHEEL LOADER/ FORKLIFT, P/B CASE A401BD DIESEL ENGINE, 114 HP, 4 SPD POWERSHIFT TRANS., EROPS, 10'L FORKS



2005 MACK CHN613 T/A KILL TRUCK, P/B MACK 6 CYL DIESEL ENGINE, 18 SPD TRANS., GARDNER DENVER TEE TRIPLEX PUMP, MISSION CENT PUMP, ROOPER CHARGE PUMP, SHOWS 680,032 MILES & 36,311 HRS

1999 KENWORTH W900 T/A KILL TRUCK, P/B CUMMINS N-14 500E DIESEL ENGINE, 13 SPD TRANS., GARDNER DENVER TEE TRIPLEX PUMP, MCII FLOW ANALYZER, COBRA CENT PUMP, COWBOY PUMP, HR, SHOWS 1,014,562 MILES

1994 KENWORTH W900 H T/A KILL TRUCK, P/B CAT 3406 DIESEL ENGINE, 13 SPD TRANS., W/ GARDNER DENVER TEE TRIPLEX PUMP, (1) MISSION MAGNUM 3X4 CENT PUMP, (1) 2X3 CENT CHARGE PUMP

**VAC TRUCKS**

(4) 2012-2010 WESTERN STAR 4900SF T/A VAC TRUCKS, P/B DETROIT DD15 DIESEL ENGINE, 10 SPD TRANS., W/ VAC PUMP  
2012 KENWORTH T/A VAC TRUCK, P/B CUMMINS ISX15 DIESEL ENGINE, 10 SPD TRANS., W/ VAC PUMP

2007 MACK CHU613 VAC TRUCK, P/B MACK MP8  
2006 KENWORTH W900 T/A SLEEPER VAC TRUCK, P/B C-15 475 HP DIESEL ENGINE, 10 SPD TRANS., W/ VAC PUMP

(2) 2006-2004 INTERNATIONAL 9400I T/A SLEEPER VAC TRUCKS, P/B CUMMINS ISX DIESEL ENGINE, 10 SPD TRANS., W/ VAC PUMP

(2) 2004 PETERBILT 379 T/A VAC TRUCKS, P/B CAT C15 DIESEL ENGINE, 10 SPD TRANS, W/ VAC PUMP

**ACID TRAILER**

2012 WILCO 130 BBL T/A ACID TRAILER, 4X3X13 HYD CENT PUMP, AIR VALVES, SIDE MTD WALKWAY, AIR RIDE SUSP

**KILL TRAILERS**

2013 LOWEN T/A 2 COMP 130 BBL KILL TRAILER • 2012 TROXELL 2 COMP T/A 130 BBL KILL TRAILER • 2008 WORLEY 95 BBL (3) COMP T/A KILL TRAILER, 4X3X13 HYD

CENT PUMP, CONTROL PANEL, AIR VALVES, HYD TANK, SIDE MTD WALKWAY, HOSE TROUGH, AIR RIDE • (2) 2009 OVERLAND TANK T/A 130 BBL KILL TRAILERS

**PNEUMATIC TRAILERS**

(17) 2014-1979 PNEUMATIC T/A BULK TRAILERS  
(3) 2011 APPCO SANDKINGS

**VAC TRAILERS**

(2) 2020-2010 OVERLAND T/A 130 BBL VAC TRAILERS • 2017 HERCULES T/A 130 BBL VAC TRAILER • 2012 SOUTHERN VAC 130 BBL T/A VAC TRAILER • (26) 2014-2005 TROXELL 130 BBL T/A VAC TRAILERS • (11) 2012-2001 DRAGON 130 BBL T/A VAC TRAILERS • (4) 2012-2011 HERCULES 130 BBL VAC TRAILERS • (3) 2010- 2005 VE ENTERPRISES 130 BBL T/A VAC TRAILERS • (2) 2011-2005 GALYEAN 130 BBL T/A VAC TRAILERS • (2) 2011-2002 PROCO 130 BBL T/A VAC TRAILERS • 2007 VE EAGLE 130 BBL T/A VAC TRAILER • (3) 130 BBL T/A VAC TRAILERS

**HEAVY HAUL TRAILERS**

1987 ATOKA DBL DROP TRAILER W/ RAMPS

**HYDRO VAC TRUCK**

1996 VAN CONE SUPER SUCKER, MTD ON



1-432-694-2018

Office & Yard:  
4006 SCR 1232  
Midland, TX 79706

www.permianint.com

**AUCTION INFORMATION**

**Date & Time**  
Wednesday & Thursday –  
September 29th & 30th, 2021@ 9AM (CST)  
**Auction Location - Midland, TX**  
Permian International Auctions  
4006 SCR 1232 • Midland, TX 79706

**Airport**  
Midland International Air & Space Port  
Served by major airlines and car rental companies  
**Other Hotels**  
Best Western Midland Suites  
432-218-7549  
Holiday Inn & Suites Midland S-I-20  
432-695-9020  
Country Inn & Suites 432-218-7980  
Comfort Inn 432-695-6900  
Quality Inn 520-505-2281  
Suburban Extended Stay  
432-689-0430

**TERMS OF SALE**

All bidders must register and provide proper identification. All purchases must be PAID IN FULL on sale date before equipment will be released. Acceptable forms of payment include Cashier's Check, Travelers Checks, Wire Transfer or Personal/Company Check Accompanied by BANK LETTER OF GUARANTEE. No drafts will be accepted. All printed information regarding this sale is merely a guide,

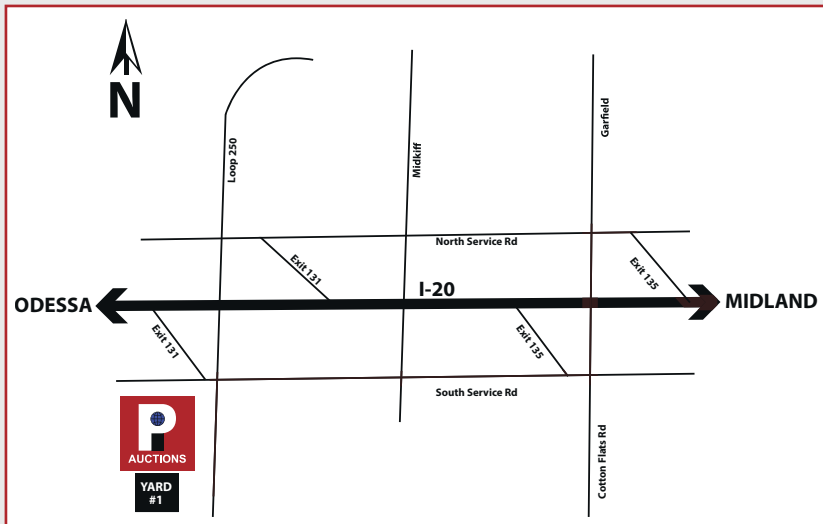
subject to change, and neither the auction Company, Sellers, nor Publishers shall be liable for any errors in this brochure. All items will be sold "AS IS, WHERE IS, WITH ALL FAULTS" and without guarantee or warranty of any kind, either expressed or implied.

**TAX NOTICE**

Purchasers who are tax exempt MUST provide a copy of their SALES and USE TAX PERMIT at the time of BIDDER REGISTRATION. The company Federal Identification Number, or for a proprietorship, the purchaser's social security number will also be required at registration. **BRING A COPY OF YOUR SALES AND USE TAX PERMIT!**

**ABSENTEE BIDS**

Absentee Bids Only Allowed with 50% DEPOSIT OF MAXIMUM BID and WRITTEN INSTRUCTIONS to Midland Office 24 HOURS PRIOR TO AUCTION, NO EXCEPTIONS. *Preview Starting September 24, 2021*





**CHAMPION 720A SERIES 111 MOTOR GRADER** S/N 720A-187-1466-23056, P/B CUMMINS 6CT8.3, 155 HP DIESEL ENGINE, POWERSHIFT TRANS, MOLDBOARD 12' WB, EROPS, 14.00-24 TIRES

### TRUCKS

**2011 NAVISTAR PAYSTAR T/A DAYCAB BOBTAIL VAC TRUCK**, P/B A-430 MAXXFORCE 13, 12.4L DIESEL ENGINE, 10 SPD TRANS., 206" WB, W/ 60 BBL VAC TANK, CLEAN OUT DUMP, NVE VAC PUMP, CHELSEA PTO, HOSE TROUGHS, 11R/24.5" TIRES, DISC WHEELS, SHOWS 192473 MILES & 10469 HRS

**1991 NAVISTAR INTERNATIONAL CORP T/A DAYCAB BOBTAIL VAC TRUCK** P/B DETROIT SERIES 60 DIESEL ENGINE 8 SPD TRANS, 181" WB W/60 BBL VAC TANK, CLEAN OUT DUMP, GARDNER DENVER TYPE VAC PUMP, PTO, HOSE TROUGHS, WORK LIGHTS

**1972 INTERNATIONAL FLEETSTAR 2070A DAYCAB T/A 12 YD DUMP TRUCK** P/B 290 HP DIESEL ENGINE, 5X2 TRANS, 184" WB, WALKING BEAM SUSP, CHELSEA PTO, HEIL DUMP BED, 11R/22.5 TIRES

### KILL TRUCK

**1996 MACK CH-613 T/A PUMP / KILL, VAC TRUCK** P/B MACK E7-427, 8SPD TRANS, 252" WB, FWI TRIPLEX 160 HP PUMP, 40 BBL TANK, MASPORT VAC PUMP, 11R/22.5 TIRES

### TRAILERS

**1972 SHOPBUILT 3 AXLE LOWBOY TRAILER**, 8'W X 36'L DECK, 9'L NECK, RT, INVERTED 5TH WHEEL, 11R/22.5" TIRES, DISC WHEELS

**SHOPBUILT 8'W X 40'L OILFIELD FLOAT**, RT, INVERTED 5TH WHEEL, SPRING SUSP., 11R/24.5" TIRES, SPOKE WHEELS

**LOAD MAX RT-203 T/A GN TRAILER**, 32'L DECK, 5' DOVETAIL, W/ FOLD DOWN RAMPS, 9'L NECK, DUAL LANDING GEAR, TOOLBOX, (7) STRAP WINCHES

**POLY PIPE T/A REEL TRAILER**, HYD POWERED, (2) PUMPS, BRIGGS-STRATTON 16 HP GAS ENGINE, LANDING GEAR, PINTLE HITCH

### YARD #4 - BAKERSFIELD, CA

**Directions:** 18835 California #65, Bakersfield, CA 93308

**Contact:** Carlos Ochoa 661-667-1363

**PREVIEW & CHECKOUT:** PREVIEW BEGINNING September 24<sup>th</sup>, CHECKOUT: M- F, 8am- 5pm thru October 15<sup>th</sup>. BY APPOINTMENT ONLY! 48 HR NOTICE. WILL NOT ASSIST WITH LOADOUT, PPE REQUIRED!

### PICKUPS

**2013 FORD F550 SUPERDUTY DUALY MECHANICS PICKUP**, P/B POWERSTROKE DIESEL ENGINE, AUTO TRANS., W/ 12'L MECHANICS BED, AIR COMPRESSOR, HOSE REEL, LIGHTS, PW, PL, PM

**(2) 2012 FORD F450 SUPERDUTY SGL CAB DUALY 4X4 PICKUPS**, P/B 6.7L POWER STROKE DIESEL ENGINE, AUTO TRANS., DUAL FUEL TANKS, 13'L FROM BED TO END OF FRAME, AC/ HEAT, PL, PW, PM, SHOWS 306,564 MILES & 259,816 MILES

**2011 FORD F250 SUPERDUTY CREW CAB 4X4 PICKUP**, P/B POWER STROKE DIESEL ENGINE, AUTO TRANS., AC/HEAT, PW, PL, PM

**2011 FORD F150 EXT CAB 4X4 LONG BED PICKUP**, P/B TRITON 5.4L GAS ENGINE, AUTO TRANS., A/C, HEAT, RADIO, PW, PL, SHOWS 309,891 MILES

### TRUCKS

**2012 PETERBILT 357 T/A SLEEPER HAUL TRUCK**, P/B CAT C-12 DIESEL ENGINE, 10 SPD EATON FULLER TRANS., 235" WB, SLIDING 5TH WHEEL, HR, AIR RIDE SUSP., 52,860 GVWR, SHOWS 121,409 MILES & 1,396 HRS

**2003 PETERBILT 357 DAY CAB T/A KILL TRUCK**, P/B CAT C-12 DIESEL ENGINE, 10 SPD EATON FULLER TRANS., 265" WB, W/ WESTERN RIDER 500 TRIPLEX PUMP, 2X3 HYD CENT PUMP, HYD TANK, OIL COOLER, SHEAR RELIEF, MCII FLOW ANALYZER, PRESSURE GAUGE, AIR RIDE SUSP., SLIDING 5TH WHEEL, SHOWS 1,470,077 MILES & 7,624 HRS

**2003 MACK CV713 DAY CAB T/A WINCH/ HAUL TRUCK**, P/B AI 400 MACK DIESEL ENGINE, 10 SPD MAXI TORQUE TRANS., 205" WB, W/ PTO DRIVEN BRADEN WINCH, HYD TANK, SLIDING 5TH WHEEL, RTB, HR, SHOWS 315,503 MILES & 23,092 HRS

**(3) 2005-2003 MACK CV713 DAY CAB T/A BLOWER/ HAUL TRUCKS**, P/B AI 400 MACK DIESEL ENGINE, AUTO TRANS., 210" WB, HR, SLIDING 5TH WHEEL, SPRING SUSP., SHOWS 98,812 MILES & 5,238 HRS / 157,226 MILES & 11,021 HRS / 206,430 MILES & 14,638 HRS

**2004 MACK CV713 DAY CAB BOB TAIL VAC TRUCK**, P/B AI 370 MACK DIESEL ENGINE, 10 SPD MAXI TORQUE TRANS., 245" WB, W/ DRAGON 80 BBL VAC TANK, FRUITLAND HYD VAC PUMP, HYD TANK, SPRING SUSP., SHOWS 157,962 MILES & 21,377 HRS

**2003 MACK RD6885 DAY CAB BOBTAIL VAC TRUCK**, P/B E7-350 MACK DIESEL ENGINE, 10 SPD MAXI TORQUE TRANS., 228" WB, W/ 80 BBL VAC TANK, FRUITLAND HYD VAC PUMP, HYD TANK, SPRING SUSP., SHOWS 319,338 MILES & 20,013 HRS

**2003 MACK CV713 DAY CAB T/A HAUL TRUCK**, P/B AI 400 MACK DIESEL ENGINE, 10 SPD MAXI TORQUE TRANS., 205" WB, SLIDING 5TH WHEEL, SPRING SUSP., HR, SHOWS 80,861 MILES & 6,455 HRS

### YARD #5 - SAN ARDO, CA

**Directions:** 62391 Sargents Rd, San Ardo, CA 93450

**Contact:** Brian Botts 661-979-9433

**PREVIEW & CHECKOUT:** PREVIEW BEGINNING September 24<sup>th</sup>, CHECKOUT: M- F, 8am- 5pm thru October 15<sup>th</sup>. BY APPOINTMENT ONLY! 48 HR NOTICE. WILL NOT ASSIST WITH LOADOUT, PPE REQUIRED!

### TRUCKS

**2004 MACK CV713 DAY CAB BOB TAIL KILL TRUCK**, P/B AI 400 MACK DIESEL ENGINE, 10 SPD MAXI TORQUE TRANS., 275" WB, W/ GARDNER DENVER TEE TRIPLEX PUMP, SHEAR RELIEF, GAUGES, AIR VALVE, MISSION MAGNUM 3X2X13 PTO CENT PUMP, OVERLAND 2 COMPARTMENT 40 BBL TANK, SPRING SUSP., SHOWS 195,526 MILES & 16,345 HRS (NOTE: MFG BY RUSH SALES)

**2003 MACK DAY CAB BOB TAIL VAC TRUCK**, P/B AI 400 MACK DIESEL ENGINE, 10 SPD MAXI TORQUE TRANS., 228" WB, W/ 80 BBL VAC TANK, FRUITLAND VAC PUMP, HYD TANK, SPRING SUSP., SHOWS 337,146 MILES & 25,546 HRS

### YARD #6 - SHAFTER, CA

**Directions:** 8920 DeSwan Court, Shafter, CA 93262

**Contact:** Carlos Ochoa 661-667-1363

**PREVIEW & CHECKOUT:** PREVIEW BEGINNING September 24<sup>th</sup>, CHECKOUT: M- F, 8am- 5pm thru October 15<sup>th</sup>. BY APPOINTMENT ONLY! 48 HR NOTICE. WILL NOT ASSIST WITH LOADOUT, PPE REQUIRED!





### TRUCK

**2001 MACK 80 BBL T/A BOB TAIL VAC TRUCK**, P/B E7-350 MACK DIESEL ENGINE, 10 SPD MAXI TORQUE TRANS., W/ 80 BBL VAC TANK, FRUITLAND HYD VAC PUMP, HYD CENT PUMP, HYD TANK, SPRING SUSP., SHOWS 392,944 MILES & 25,839 HRS

### YARD #8 - VENTURA, CA

Directions: 3587 N Ventura Ave Ventura CA 93001  
**Contact:** Juan Ramirez 661-978-3397  
**PREVIEW & CHECKOUT:** PREVIEW BEGINNING September 24<sup>th</sup>, CHECKOUT: M- F, 8am- 5pm thru October 15<sup>th</sup>. **BY APPOINTMENT ONLY!** 48 HR NOTICE. WILL NOT ASSIST WITH LOADOUT, PPE REQUIRED!

### TRUCKS

**2005 GMC C5500 SGL CAB SERVICE TRUCK**, P/B 6.6L DURAMAX DIESEL ENGINE, AUTO TRANS., 152" WB, 12'L SERVICE BED, W/ AIR COMPRESSOR, WELDER/ GENERATOR, CRANE MOUNT, SHOWS 154,300 MILES  
**1995 FREIGHTLINER T/A DAY CAB HAUL TRUCK**, P/B S-60 DETROIT DIESEL ENGINE, 10 SPD EATON FULLER TRANS., 170" WB

### YARD #9 - PLATVILLE, CO

Directions: FROM THE INTERSECTION OF US 85 AND CR 32 (GRANDVIEW AVE) IN PLATVILLE, CO TRAVEL WEST ON CR 32 2.6 MILES TO CR 31. TAKE CR 31 SOUTH 2.5 MILES TO YARD ON RIGHT.  
**PREVIEW & CHECKOUT:** PREVIEW BEGINNING September 24<sup>th</sup>, CHECKOUT: M- F, 8am- 5pm thru October 15<sup>th</sup>. **BY APPOINTMENT ONLY!**  
**Contact:** BART LORENZ 620-330-8443

### CEMENT SINGLE PUMPER

**2011 WESTERN STAR SINGLE CEMENT PUMPER** P/B CAT C15 DIESEL ENG., 18-SPD TRANS, TRIPLEX PUMP, (2) 750 GAL TANKS, MIXING TANK



### PUMP

**HYDRAULIC DRIVEN 1000PSI TRIPLEX PUMP W/ BRONZE FLUID END**

### HYDRO VAC

**2013 VERMEER VT 550 HYDRO EXCAVATOR**

### CRANE

**2017 MANITEX TC 700 CRANE BODY**, CYLINDER CONTROLS & CABIN (NO BOOM)

### YARD #10 - TENAHA, TX

Directions: 724- US 84, TENEHA, TX 75974  
**PREVIEW & CHECKOUT:** PREVIEW BEGINNING SEPTEMBER 24TH  
**CHECKOUT: MONDAY- SATURDAY, 8am- 5pm thru October 15th. PREVIEW & CHECKOUT BY APPOINTMENT ONLY!**  
**Contact:** MARK PELOQUIN 903-692-1962

### VAC TRUCKS & TRAILERS

(8) 2015 - 2007 MACK GU713 VAC TRUCKS  
 (13) 2015-2002 140BBL & 130BBL VACUUM TRAILERS

## DAY TWO

### YARD #1 - MIDLAND, TX

### WELL SERVICE RIGS

(3) 2011 **MUSTANG 600HD** DOUBLE DRUM BACK-IN WELL SERVICE RIGS P/B DETROIT SERIES 60 DIESEL ENGINE, ALLISON 5860 TRANS, 104' - 275,000# MAST, PARMAC 202 HYDROMATIC BRAKE, TELESCOPING WORK PLATFORM MTD ON 5-AXLE CARRIER



### COIL TUBING AND RELATED

**2001 KENWORTH AERO CAB TRI AXLE COIL TUBING HAUL TRUCK**, P/B C-15 CAT DIESEL ENGINE, 18 SPD EATON FULLER TRANS., 302" WB, WET KIT, PTO, AUX HYD PUMP, 60" A/C OPERATORS CONTROL ROOM, HPU, AIR RIDE SUSP., 5TH WHEEL  
 • **2001 CROWN INDUSTRIES COIL TUBING TRAILER**, MODEL- TCM04165, W/ 50' 30K# MAST, S&S INJECTOR HEAD, TUBING SPOOL W/ 1-1/4" TUBING, FORUM 3-1/16" DBL HYDRAULIC 10K# BOP, MTD ON 2001 CROWN INDUSTRIES 3 AXLE TRAILER W/ S/A PIN ON BOOSTER  
 • **HYDRAULIC COIL TUBING REEL** W/ 1-1/2" COIL TUBING

### WATER WELL RIGS

(2) 2012-2011 **SEMCO S-30,000 PUMP HOIST WELL SERVICE UNITS**, 84' TELESCOPING MAST, OUT RIGGERS, ALL MTD ON MACK CXU613 T/A TRUCKS

### DRILL RIG

2012 **SOILMEC SR-30** DRILL RIG

### ENGINES

(2) **DETROIT S-60 14L DIESEL ENGINES** W/ ALLISON 5860 TRANS • (3) **DETROIT S-60 12.7L DIESEL ENGINES** W/ ALLISON 5860 TRANS • **DETROIT S-40 DIESEL ENGINE** W/ ALLISON 750 TRANS

### AIR COMPRESSORS / ELECTRIC GENERATORS / LIGHT TOWERS

**ATLAS COPCO 1550 AIR COMPRESSOR**, P/B CAT C18 DIESEL ENGINE, SKIDDED  
 (2) **UQ POWER MODEL UQ70**, T/A 55KW ELECTRIC GENERATORS P/B PERKINS DIESEL ENGINES • **UQ POWER MODEL UQ100**, T/A 81KW ELECTRIC GENERATORS P/B PERKINS DIESEL ENGINE • (2) **NEXYS ELECTRIC GENERATORS** P/B JOHN DEERE 6-CYL DIESEL ENG. MTD, T/A GN TRAILERS



### YARD #1 - MENTONE, TX

### WELL SERVICE RIG

**2014 LOADCRAFT MODEL 550/42-12, 42-8 BACK IN D/D WELL SERVICE RIG**, SN- 140158, P/B DETROIT S-60 DIESEL ENGINE, 14.0 L, ALLISON 6061 TRANS., 202 HYDROMATIC BRAKE, LOADCRAFT 104'H - 250K# HYD RAISED & SCOPED MAST, ROD & TUBING/ DP BOARDS, MTD ON 5 AXLE CARRIER  
**FRANKS 1287/160 DTD-HT D/D BACK IN WELL SERVICE RIG**, P/B DETROIT S-60 DIESEL ENGINE, ALLISON 750 TRANS., 15" DBL HYDRO BRAKE, 96'H - 215K# 4 LEG HYD RAISED & SCOPED MAST, MTD ON 4 AXLE CARRIER

### TRAILERS

**POLY PIPE S/A REEL TRAILER**, LANDING GEAR  
**SHOPBUILT T/A BUMPER PULL PIPE TRAILER**, 7.6"W X 34'L, STRAP WINCH  
**2008 CM TRAILERS, T/A BUMPER PULL CREW TRAILER**, 7.6"W X 12'L, LOCKERS, BENCH SEATING & STORAGE, HEATER  
 (2) **SHOPBUILT T/A BUMPER PULL CREW TRAILERS**, 7.6"W X 12'L, LOCKERS, BENCH SEATING & STORAGE HEATER  
**AQUA BLAZE 2500#** HOT WATER PRESSURE WASHER P/B HONDA GX 390 16 HP GAS ENGINE, W/ 900-GAL POLY TANK, MTD ON T/A BUMPER PULL 16'L UTILITY TRAILER, LANDING GEAR 7.50 / R-16 TIR

### POWER SWIVEL

**BOWEN 2.5 MODEL 25S85G, 85 TON POWER SWIVEL**, P/B CAT 3054 DIESEL ENGINE, MTD ON 7.6"W X 16'L GN TRAILER

### PUMPS

**GARDNER DENVER PAH TRIPLEX PUMP**, P/B CAT C-10 DIESEL ENGINE  
**GARDNER DENVER PAH TRIPLEX PUMP**, P/B CAT C-9 DIESEL ENGINE





### POWER SWIVEL

VENTURE TECH XK-150 POWER SWIVEL  
P/B JOHN DEERE 6-CYL DIESEL, SKIDDED

### AIR FOAM UNIT

AIR FOAM UNIT W/ GROMAN RUPP 1250  
COMPRESSOR P/B CUMMINS QSX15  
DIESEL ENG., MIST PUMP, HYDRAULICS,  
MTD ON 3-AXLE TRAILER

### SWAB RIG

WICHTEX CARRIER MTD SWAB RIG, 36'  
MAST P/B DETROIT 8V-71 DIESEL ENG,  
ALLISON TRANS

### CREW HOUSES

(2) 60'L X 12' W TWO BEDROOM TWO  
BATH CREW HOUSES, KITCHEN, WASHER  
DRYER, FURNISHED

### PUMPS

HALIBURTON HT-400 TRIPLEX PUMP P/B  
DETROIT 8V-92T DIESEL ENG., ALLISON  
750 TRANS

### HYDRAULIC CATWALKS

2011 JBW FAB. 40' HYD. CATWALK W/ 15'  
PIPE RACK/OUTRIGGERS, 10' V-DOOR  
40' HYD. CATWALK W/ 15' PIPE RACK/  
OUTRIGGERS, 8' V-DOOR

### TANKS

110 BBL OPEN TOP 2-COMP. MIXING TANK

### PORTABLE VACUUM SYSTEMS

(5) 2014-2011 LITTLE MIN VAC PORTABLE  
VACUUM SYSTEMS

### GENERATORS

CAT XQ 200 KW GENERATOR P/B CAT 3406  
MTD ON T/A PINTLE HITCH TRAILER

ONAN 200 KW GENERATOR P/B CUMMINS  
NTC-BIG CAM 400 MTD ON PINTLE  
HITCH TRAILER

LISTER PETLY 125KW GENERATOR P/B  
JOHN DEERE MTD ON BP TRAILER

MULTIQUIP 100KW GENERATOR MTD ON  
PINTLE HITCH TRAILER

WHISPER WATT 70KW P/B IZUZO 4-CYL TURBO  
DIESEL ENG., MTD ON PINTLE HITCH TRAILER

### WATER TRANSFER PUMPS

2015 12" GODWIN DRI-PRIME PUMP  
MODEL# CD300M • 2012 12" GODWIN DRI-  
PRIME PUMP MODEL# DCP-300 • 2010 8"  
GODWIN DRI-PRIME PUMP MODEL#  
CD225M • (3) 2013-2007 6" GODWIN DRI-  
PRIME PUMPS • 2011 4" GODWIN  
DRI-PRIME PUMP MODEL # T3A61SB

### SAFETY RESTROOM TRAILERS

(4) 2014 (3) STALL W/ SHOWER SAFETY  
RESTROOM TRAILERS

(2) 2013 (3) STALL W/ SHOWER SAFETY  
RESTROOM TRAILERS

2012 (3) STALL W/ SHOWER SAFETY  
RESTROOM TRAILER

2011 (3) STALL W/ SHOWER SAFETY  
RESTROOM TRAILER

2013 (2) STALL W/ SHOWER & EYE  
WASH TRAILER

(3) 2004 (2) STALL W/ SHOWER & EYE  
WASH TRAILERS

### GLYCOL HEATERS

(4) 2014 THOR LD5030 FROST BUSTER  
GROUND HEATERS

### LIGHT TOWERS

(6) MAGNUM 6KW LIGHT TOWERS

(3) TEREX 6KW LIGHT TOWERS

### YARD #6 - SHAFTER, CA

### LIGHT TOWERS / GENERATORS / WELDERS

COLEMAN ENGINEERING S/A BP  
LIGHT TOWER, P/B 3 CYL KUBOTA  
ENGINE, PINTLE HITCH, SHOWS 7,  
469 HRS

(4) GENERAC XG8000E GAS  
GENERATORS

(2) RANGER 8 LINCOLN ELECTRIC  
GAS WELDERS

(2) IDEALARC DC400 & R3S400  
LINCOLN ELECTRIC ARC WELDERS

### TRAILERS

(2) 500 BBL CRIMPED STEEL S/A FRAC  
TANKS W/ CLEANOUT & REAR DRAINS  
2001 CARRIER 15'L T/A BP DOGHOUSE  
TRAILER, W/ REAR WALK IN DOOR,  
BENCHES, LOCKERS, PROPANE  
HEATER



CLASSIC 14' T/A BP DOGHOUSE TRAILER,  
W/ REAR WALK IN DOOR, BENCHES,  
LOCKERS, A/C UNIT, PINTLE HITCH

SHOPBUILT 90 BBL TRAILER MTD POLY  
TANK, W/ HONDA TRANSFER PUMP,  
PINTLE HITCH

SHOPBUILT T/A BP PRESSURE WASHER  
TRAILER, W/ STEAMER, 400-GAL POLY  
TANK, PINTLE HITCH

800-GAL S/A BP WATER TRAILER, PINTLE  
HITCH

### YARD #7 - UNIONTOWN, PA

Directions: 113 RICHMOND ST,  
UNIONTOWN, PA 15401

Contact: DERRICK HAIDEN 724-833-3985

PREVIEW & CHECKOUT: PREVIEW  
BEGINNING September 24<sup>th</sup>, CHECKOUT:  
M- F, 8am- 5pm thru October 15<sup>th</sup>. BY  
APPOINTMENT ONLY!

### PUMPS

(3) CHALLENGER HD-500 TRIPLEX PUMPS

### TANKS

(2) MIXING TANKS

(2) 200 BBL HALF ROUND TANKS

### PORTABLE VACUUM SYSTEMS

(10) 2014-2011 LITTLE MIN VAC PORTABLE  
VACUUM SYSTEMS

### FILTER POD TRAILERS

(3) DUAL POD FILTER TRAILERS

### GENERATORS

WHISPER WATT MW POWER 25 GENERATOR  
SHINDAIWA KWIET 70KVA GENERATOR  
TEREX T-120 GENERATOR  
KOHLER 7900 GENERATOR

### GLYCOL HEATERS

(3) 2014 THOR LD5030 FROST BUSTER  
GROUND HEATERS

### OFFICE TRAILERS

(2) OFFICE TRAILER HOUSES



WHEATLEY TYPE TRIPLEX PUMP, P/B 25 HP  
ELECTRIC MOTOR, ROD LUBRICATOR,  
ELECTRIC CONTROL BOX, (6) BBL CEMENT  
SLURRY PIT, V-BOTTOM, LADDER, SKIDDED

### BOP / CLOSING UNIT

TOWNSEND 13-5/8" DBL 5000K HYD BOP W/ RAMS  
MEYER SERVICE CO 3 STATION CLOSING  
UNIT MTD ON SHOPBUILT 3 AXLE GN TRAILER

### TANKS

(7) 10'D X 32'L 500 BBL FRAC TANKS,  
MANIFOLD, 8" SUCTION HOSE, SKIDDED  
400 BBL STEEL STORAGE TANK

### PRODUCTION EQUIPMENT

LUFKIN 80 DB PUMPING UNIT • AMERICAN D-  
228 PUMPING UNIT • WHITE TANK CO 4'D X  
20'H HEATER TREATER SEPARATOR • WHITE  
TANK CO 4'D X 24'6" H HEATER TREATER  
SEPARATOR • BS & B 4'D X 20'H HEATER TREATOR  
SEPARATOR • BS & B TYPE HEATER TREATOR  
SEPARATOR • (2) SIVALLS 48" D X 13" H, 125  
WP SEPARATOR • 20 LOW PRESSURE  
SEPARATORS • 30" D X 8'L HORIZONTAL 125"  
SEPARATOR • 6 HIGH PRESSURE  
SEPARATORS • 6 HEATER TREATORS • 8  
INLINE HEATERS • (10) 2" & 3" METER RUNS •  
(20+) 600-100 BBL STEEL & FIBERGLASS  
STORAGE TANKS • FLO BACK TANKS •  
LANDINGS & STAIRWAYS F/ STORAGE TANKS

### WELL SERVICE TOOLS / FISHING TOOLS

MCKISSICK 83A 100-T TUBING BLOCK,  
ELEVATOR BALES, TONGS, SLIPS, MILLS,  
OVERSHOTS, SPEARS, GRAPPLES, X-O  
SUBS, LEAD IMPRESSION BLOCKS, STRING  
MILLS, TIW VALVES, DRILL COLLARS

### YARD #3 - KALKASKA, MI

Directions: 1212 PROUGH RD. SW, KALKASKA,  
MI 49646

Contact: DON TINKER 231-357-1016

PREVIEW & CHECKOUT: PREVIEW BEGINNING  
September 24<sup>th</sup>, CHECKOUT: M- F, 8am- 5pm  
thru October 15<sup>th</sup>. \*BY APPOINTMENT ONLY\*



# AUCTION

## WED/THURS

### SEPT 29/30, 2021

### 9:00AM CST



Permian International  
Energy Services, LLC

P.O. BOX 3820  
Midland, TX 79702

[www.piauction.com](http://www.piauction.com)  
[www.permianint.com](http://www.permianint.com)

Like us on  
facebook 



ONLINE BIDDING  
Powered By  




# WED/THURS • SEPT 29/30, 2021 • MIDLAND, TEXAS • 9AM (CST)