



MIDLAND, TEXAS AUCTION



1 of 2



2015 ARTEX-USA 3400DX9 WIRELINE TRUCK DY1 • YD 1

5% Buyer Premium On Site • 7% Buyer Premium On Line • Auctioneers | Sixto Paiz – #17750 • Eric Dyess – TX Lic# 16926

TUES/WED • MAY 11th/12th, 2021

9:00A.M. (CST) Each Day • Preview Starting May 7, 2021

OMEGA TRIPLEX ACID PUMPER TRAILER DY1 • YD 1



**WIRELINE TRUCKS
HAUL TRUCKS
TRAILERS • PICKUPS
WELL SERVICE RIGS
CONSTRUCTION
FISHING &
RENTAL TOOLS**

2014 PREMIER COIL SOLUTIONS DY1 • YD 1



FISHING & RENTAL TOOLS DY2 • YD 5



2009 PETERBILT WINCH TRUCK DY1 • YD 1



www.PermianInt.com

Call Steve Taylor (432-448-0406), Eric Dyess (940-452-4132), OR Michael Hardwick (432-448-3208)



JOHN DEERE 624 WHEEL LOADER DY1 • YD 1



2018 PREMIER COIL SOLUTIONS DBL PUMPER DY1 • YD 1



CASE 580 SUPER M EXTENDA BACKHOE DY1 • YD 1



2011 SCONA LB60 DY1 • YD 1



2004 MACK CV713 WINCH TRUCK DY1 • YD 1



2007 NOV ROLLIGON QUINTUPLEX DBL PUMPER DY1 • YD 1



2012 FREIGHTLINER CORONADO SD WINCH TRUCK DY1 • YD 1



2011 FORD F550 WIRELINE PICKUP DY1 • YD 1

DAY 1

YARD #1 - MIDLAND, TX

Directions: 4006 SCR 1232 MIDLAND, TX 79706 (Exit 131 off I20, go South .5-mile, yard on right)

Preview: Starting May 7th, 2021

Checkout: 8am-5pm thru May 28, 2021 Saturday by APPT!

Contact: Bubba Koener 940-224-8071

CONSTRUCTION

JOHN DEERE 624 WHEEL LOADER, SN- DW624HX583981, P/B 6 CYL TURBO DIESEL, 4 SPD SHUTTLE SHIFT TRANS., A/C & HEAT, RADIO, QUICK ATTACH, COMES W/ 3 YD BUCKET & 6' FORKS, SHOWS 16,212 HRS

CASE 580 SUPER M 2X4 EXTENDA BACKHOE, SN- JJG0375163, P/B 4 CYL CUMMINS, 4 SPD TRANS., ENCLOSED CAB, A/C & HEAT, SHOWS 7,374 HRS

2000 SNORKLE 4X4 60' MANLIFT, TBA-60RCU, SN-SP00077, SHOWS 7,051 HRS

GENERATORS / LIGHT TOWERS

(2) 2013 GENERAC INDUSTRIAL POWER 130KW, 277/480V (3) PHASE ELECTRIC GENERATORS, P/B NATURAL GAS V8 ENGINE, MTD ON S/A BP TRAILERS

2012 FRONTIER POWER PRODUCTS 4 BULB PORTABLE LIGHT TOWER, P/B 3 CYL KUBOTA, 8 KW GENERATOR, SHOWS 11,284 HRS

(2) 2011-2006 FRONTIER POWER PRODUCTS 4 BULB PORTABLE LIGHT TOWERS, P/B 4 CYL KUBOTA DIESEL ENGINE, 21/23 KW, SHOWS 8,136 HRS & 26,061 HRS

(2) WARREN POWER SYSTEMS S/A PORTABLE LIGHT TOWERS, MODEL- WCW84MH, P/B CAT 3 CYL, 8 KW GENERATOR, SHOWS 7,628 HRS & 8,582 HRS

WARREN POWER SYSTEMS 4 BULB PORTABLE LIGHT TOWER, MODEL- WCW84MH, P/B CAT 3 CYL DIESEL ENGINE, 8KW GENERATOR, APPROX 10K HRS

MAGNUM 4 BULB S/A PORTABLE LIGHT TOWER, P/B 3 CYL KUBOTA ENGINE, 6 KW GENERATOR, SHOWS 15,157 HRS

(3)2018- 2016 DOOSAN 85 KVA GEN SETS, P/B DOOSAN DIESEL ENGINE W/ SOUND PROOF ENGINE COVER, MOUNTED ON T/A TRAILER 2-5/16" BALL HITCH S/N DOOSAN 2383, SHOWS 7,966.8HRS, SHOWS 6,838HRS

2018 DOOSAN 50KW GEN SET, P/B DOOSAN DIESEL ENGINE W/ SOUND PROOF ENGINE COVER, MOUNTED ON T/A TRAILER 2-5/16" BALL HITCH 483829UHABF90, SHOWS 1,814.5HRS

WELDERS

(2) LINCOLN ELECTRIC VANTAGE 500 DIESEL WELDING MACHINES, SHOWS 5,096 HRS & 6,068 HRS

LINCOLN ELECTRIC SA200 DC WELDER, P/B 4 CYL GAS ENGINE

LINCOLN ELECTRIC CROSS COUNTY 300 DIESEL WELDER, P/B 4 CYL KUBOTA

COIL TUBING RIG

2014 PERMIER COIL SOLUTION PS MODEL WR115, 1-1/4 COIL APPROX 15,500 FT ON REEL WILL HOLD 18' TSI INJECTION HEAD, OPERATORS CABIN, ALL MTD ON 2013 KENWORTH T-800 6 AXLE TRUCK TRACTOR P/B CUMMINS 1SX-15 DIESEL, 18 SP TRAN, FIELD READY

PUMPERS

2018 PREMIER COIL SOLUTIONS, MODEL- FTT-086-1900 DBL PUMPER, W/ (2) 1000 HP QUINTUPLEX PUMPS, P/B (2) 950 HP CUMMINS DIESEL ENIGNES, W/ ALLISON 6620 TRANS., 5" MANIFOLD W/ 2" DISCHARGE, CLIMATE CONTROLLED CABIN, COLD WEATHER PACKAGE, 6,114 ROADSIDE HRS & 6,272 CURBSIDE HRS

2007 NOV ROLLIGON QPT-1602, 1000 HP QUINTUPLEX DBL PUMPER W/ (2) MSI 3" X 15K# QUINTUPLEX PUMPS, P/B (2) CUMMINS QSK19 1000 HP ENGINES, 86601H ALLISON TRANS., (2) EATON FULLER 1202 AUX TRANS., (2) 5X4X14 CENT PUMPS, ENCLOSED OPERATORS CONSOLE, MIXING TUB W/ AGITATOR, ALL MTD ON T/A SPREAD AXLE TRAILER

ACID PUMPERS

OMEGA TRIPLEX ACID PUMP TRAILER, P/B CUMMINS KTA38, ALLISON TRANS., NOV WS2400 FLUID END, 5" PLUNGERS, (2) 750 GAL TANKS, (2) 5X4X14 CENT PUMPS,

OPERATORS CONSOLE, ASSORTED HARDLINE, CHICKSANS, ALL MTD ON T/A TRAILER

1999 INTERNATIONAL 9200 T/A DAY CAB ACID PUMP TRUCK, P/B DETROIT S-60 DIESEL ENGINE, 10 SPD ROCKWELL TRANS., 212"WB, W/ TRIPLEX PUMP, W600S FLUID END, 3-1/2" PLUNGERS, 4X3X13 MISSION CENT PUMP, (2) 500 GAL TANKS, HARDLINE VALVES, CONTROL PANEL, SHOWS 671,696 MILES & 13,833 HRS

SAND SEPERATORS / FILTER UNITS

(2) 2018 WICHITA SAND SEPERATORS SUPER LOOP SANDXUS, 1700-GAL CAPACITY, 4' DIA, 33.6' TALL, W/ HYD PUMPS, P/B HONDA GAS ENGINE DUAL ROTARY AUGERS, P/B ELECTRIC MOTORS ALL MTD ON T/A 36'L TRAILERS W/ (2) WTM SAND X 500 BBL T/A FLOW BACK TNKS W/ DUAL AUGERS TO ENTRY SAND, P/B ELECTRIC MOTORS, 40" CLEAN OUTS ON BOTH SIDES

(5) DUTCH FILTRATION TWIN UNITS W/ 50 FILTERS IN EACH POD, CATRIGE STYLE, INLET & OUTLET PRSSURE GAUGE INSIDE OFFSHORE CRADLE

(3) PORTABLE MIXING PLANTS, (2) 50 BBL MIXING TANKS, HYDRAULICS P/B (2) 30 HP ELECTRIC MOTORS, W/ 4X5X14 MCM MUD MASTER CENT PUMP, (2) MCM 4X5X14 MCM CENT MIXING PUMPS, P/B HONDA 125KW DIESEL GENERATOR, ALL MTD ON FONTAINE 48' STEP DECK TRAILER

NITROGEN PUMPS

(2) 2017-2015 LOADCRAFT LCI-3T-C NITROGEN PUMPS, P/B CAT C-18 800 HP ENGINE, OPERATORS CABIN, HYD COOLING SYSTEM, CS&P TECHNOLOGIES NITROGEN CONVERTOR W/ 5 STAGE NITROGEN PUMP, ALL MTD ON 48' STEPDECK TRAILERS

2014 CYROGENIC VESSEL ALTERNATIVE CVAN2 PUMP, P/B CUMMINS ISX-15 ENGINE, 3,363 GAL TANK W/ HYD POWERED ACD 3 STAGE RECIPICATING PUMP, OPERATORS CABIN, ALL MTD ON 48' STEP DECK SPREAD AXLE TRAILER

WIRELINE TRUCKS

(2) 2015 ARTEX-USA 3400DX9 TRUCK, MTD WIRELINE UNITS, W/ OPERATORS CONTROL ROOM, (2) A/C UNITS, HYD POWERED GENERATOR,

WIRELINE SPOOLS & GUIDE ARM, STORAGE BOXES, WORKLIGHTS & CAMERA, ALL MTD ON 2015 KENWORTH T800 DAY CAB T/A TRUCKS, P/B CUMMINS ISX15 450 HP, EATON FULLER 10 SPD TRANS., 260" WB, 66K# GVWR, DUAL HYD PRO PUMPS, SHOWS 55,595 & 6,276 HRS & 60,190 MILES & 2,325 HRS

2011 FORD 550 SUPER DUTY CREW CAB 4X4 WIRELINE TRUCK, P/B 6.7L POWER STROKE, AUTO TRANS., DROPBOX, W/ 12' WIRELINE BED, REEL W/ WIRE, CONTROL ARM, (8) BOXES, VAIR AIR COMP., HYD SYTEMW/ DROPBOX, LOAD INDICATOR, OPERATORS CONSOLE, SHOWS 167,761 MILES & 8,891 HRS

WELL SERVICE RIGS / TOOLS

1982 FRANKS 1287/160 DBL DRUM BACK IN W/S RIG, SN- 82124-6 P/B DETROIT S-60 DIESEL ENGINE, ALLISON 750 TRANS., 96'-150,000# TRISCOPE MAST, DBL HYDROMATIC BRAKE, HYDRAULIC UTILITY WINCH, WORK PLATFORM, MCKISSICK 100-TON BLOCK, MTD ON 4-AXLE CARRIER, 385/65R22.5" FRONT & 11R22.5" REAR TIRES

(2) 1978 FRANKS 1287/160 DBL DRUM BACK IN W/S SERVICE RIGS, P/B DETROIT S-60 DIESEL ENGINE, ALLISON 750 TRANS., 96'-150,000# TRISCOPE MAST, DBL HYDROMATIC BRAKE, HYDRAULIC UTILITY WINCH, WORK PLATFORM, MCKISSICK 100-TON BLOCK MTD ON 4-AXLE CARRIERS, 385/65R22.5" FRONT & 11R22.5" REAR TIRES

WELL SERVICE TOOLS

(3) WELL SERVICE TOOL PACKAGES

COIL TUBING EQUIPMENT

(3) 2015 NEXUS 5-1/8" DRESSED F/ 2-3/8" BOP W/ INTERNAL HYD W.P 10K, TP 15K

(3) NEXUS 5-1/8" 15K# SGL BOPS IN STANDS

(2) NEXUS 3-1/16" 15K SGL BOPS
TOT 3-1/16" 15K# SGL BOP

TEXAS OIL TOOLS QUAD 3K# BOP ON 24" STAND

(3) PREMIER COIL OCS 140K
INJECTOR HEADS

PREMIER COIL OCS 100K
INJECTOR HEAD

WINCH TRUCKS

2012 FREIGHTLINER CORONADO SD 4 AXLE WINCH/ BED TRUCK, P/B CUMMINS ISX DIESEL ENGINE, 18 SPD TRANS., 260" WB, BRADEN MS-30 WINCH, 18'L BED W/ HR, RTB, KING PIN, TOOLBOX, SHOWS 371,912 MILES

2009 PETERBILT 367 T/A GIN POLE TRUCK, P/B CUMMINS IXM DIESEL ENGINE, 10 SPD AUX TRANS., 330"WB, 25' L BED W/ 24' POLES, (3) WINCHES, HR, RTB, TOOLBOXES, SHOWS 294,896 MILES

2005 MACK GRANITE CU713 DAY CAB T/A WINCH TRUCK, P/B AMI-370 MACK, MAXITORQUE 9 SPD TRANS., 208"WB, PTO 30K# ROUGHNECK WINCH, H/R, TB, 5TH WHEEL, RTB, SPRING SUSP., SHOWS 514,830 MILES & 21,160 HRS

2004 MACK CV713 4 AXLE WINCH/ HAUL TRUCK, P/B MACK AI-427 DIESEL ENGINE, 18 SPD TRANS., 228"WB, 17'L OFS BED W/ TULSA WINCH, HR, FRAME WIDTH RTB, 5TH WHEEL, TOOLBOXES, SHOWS 444,194 MILES



1982 FRANKS 1287/160 DY1 • YD1



2009 CHEVROLET C4500 BUCKET TRUCK DY1 • YD5



2012 TRAILZEZE DY1 • YD1



2012 INT'L 9400i DY1 • YD1



WESTERN STAR WINCH TRUCK DY1 • YD5



CHEVROLET BUCKET TRUCKS DY1 • YD1



2018 WICHITA SAND SEPARATORS DY1 • YD1



1999 INTERNATIONAL ACID PUMP TRUCK DY1 • YD1

AUCTION INFORMATION

Date & Time

Tuesday & Wednesday, May 11th & 12th, 2021 @ 9:00 AM (CST) Each Day

Auction Location - Midland, TX

Permian International Auctions
4006 SCR 1232 • Midland, TX 79706

Airport

Midland International Air & Space Port
Serviced by major airlines and car rental companies

Other Hotels

Best Western Midland Suites
432-218-7549

Holiday Inn & Suites Midland S-I-20
432-695-9020

Country Inn & Suites 432-218-7980

Comfort Inn 432-695-6900

Quality Inn 520-505-2281

Suburban Extended Stay
432-689-0430

Four Points 432-704-5300

TERMS OF SALE

All bidders must register and provide proper identification. All purchases must be PAID IN FULL on sale date before equipment will be released. Acceptable forms of payment include Cashier's Check, Travelers Checks, Wire Transfer or

Personal/Company Check Accompanied by BANK LETTER OF GUARANTEE. No drafts will be accepted. All printed information regarding this sale is merely a guide, subject to change, and neither the auction Company, Sellers, nor Publishers shall be liable for any errors in this brochure. All items will be sold "AS IS, WHERE IS, WITH ALL FAULTS" and without guarantee or warranty of any kind, either expressed or implied.

TAX NOTICE

Purchasers who are tax exempt MUST provide a copy of their SALES and USE TAX PERMIT at the time of BIDDER REGISTRATION. The company Federal Identification Number, or for a proprietorship, the purchaser's social security number will also be required at registration. **BRING A COPY OF YOUR SALES AND USE TAX PERMIT!**

ABSENTEE BIDS

Absentee Bids Only Allowed with 50% DEPOSIT OF MAXIMUM BID and WRITTEN INSTRUCTIONS to Midland Office 24 HOURS PRIOR TO AUCTION, NO EXCEPTIONS. **Preview Starting May 7th, 2021**

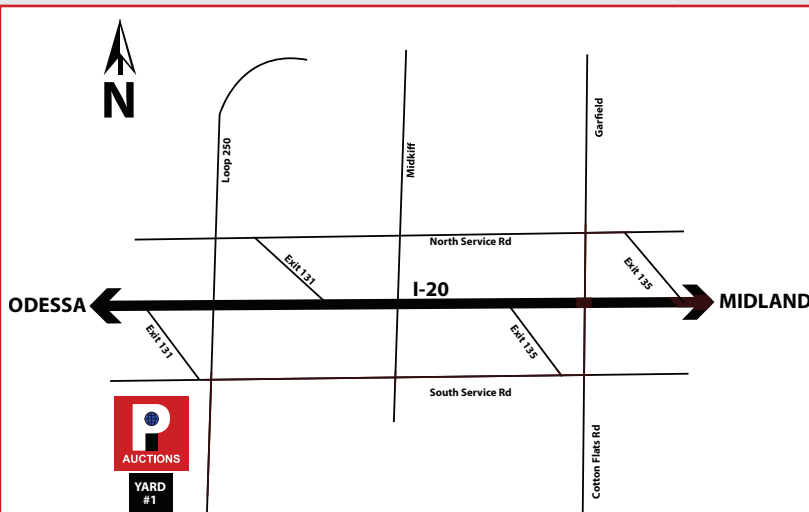


AUCTIONS

1-432-694-2018

Office & Yard:
4006 SCR 1232
Midland, TX 79706

www.piauction.com
www.permianint.com





2014 DODGE 1500 PICKUP DY1 • YD1

1997 MACK RD690S T/A DAYCAB ROAD WINCH TRUCK, P/B MACK EM7-300, MAXITORQUE 7 SPD TRANS., 205"WB, PTO, BRADEN WINCH, HR, 5TH WHEEL, AIR RIDE SUSP., SHOWS 531,158 MILES & 28,292 HRS

HAUL TRUCKS

2012 PETERBILT 587 SLEEPER HAUL TRUCK, 226" WB, 5TH WHEEL

2006 KENWORTH T800 T/A DAY CAB HAUL TRUCK, P/B CAT C15 DIESEL ENGINE, EATON FULLER 10 SPD TRANS., 178"WB, 5TH WHEEL, SHOWS 711,282 MILES & 3,326 HRS

2002 INTERNATIONAL 9200I T/A SLEEPER HAUL TRUCK, P/B N14 CUMMINS, 10 SPD EATON FULLER TRANS., 225"WB, 60" SLEEPER, 5TH WHEEL, AIR RIDE SUSP., SHOWS 217,109 MILES

1999 INTERNATIONAL 9200I T/A SLEEPER HAUL TRUCK, P/B ISM CUMMINS, 10 SPD EATON FULLER TRANS., 215" WB, 60" SLEEPER, 5TH WHEEL

VAC TRUCK

2002 INTERNATIONAL 9400I T/A SLEEPER VAC TRUCK, P/B CAT 6N2 C-15 DIESEL ENGINE, 13 SPD EATON FULLER TRANS., 235"WB, FRUITLAND PTO VAC PUMP

BUCKET TRUCK

2009 CHEVROLET C4500 SGL CAB DUALLY BUCKET TRUCK, P/B 8.1L GAS ENGINE, AUTO TRANS., PW, PL, MM, W/ ETI EQUIP 9 BOX BED, ENCLOSED CENTER STORAGE, CUMMINS ONAN QG GENERATOR, SHOWS 161,195 MILES

2003 CHEVROLET C6500 SGL CAB BUCKET TRUCK, P/B CAT 3126 DIESEL ENGINE, SPICER 7 SPD TRANS., PTO, 188" WB, HYD BRAKES W/ VERSALIFT BED, TOOLBOXES, HYD OUTRIGGERS, SHOWS 289,522 MILES

1993 CHEVROLET KODIAK SGL CAB S/A BUCKET TRUCK, P/B CAT 3116 DIESEL ENGINE, 6 SPD TRANS., PTO, 155"WB, W/ READING 132ADW BUCKET TRUCK BED, OUTRIGGERS, TOOLBOXES, SHOWS 333,550 MILES

PICKUPS

2007 FORD F550 SUPER DUTY CREW CAB SERVICE TRUCK, P/B 6.0 POWER STROKE DIESEL ENGINE, AUTO TRANS., W/ KNAPHEIDE 8 COMP BED, RHINO LINED, 19.5" WHEELS, SHOWS 123,012 MILES

2006 FORD F350 KING RANCH SWB 4X4 PICKUP, P/B 6.0 POWERSTROKE DIESEL, AUTO TRANS., 6" LIFT, PW, PL, PM, SUNROOF, SHOWS 222,530 MILES

2014 DODGE RAM 1500 CREW CAB PICKUP, P/B 5.7L HEMI GAS ENGINE, AUTO TRANS., LEATHER SEATS, PW, PL, LONESTAR PACKAGE, BED LINER, SHOWS 149,270 MILES

2010 CHEVROLET 2500HD CREW CAB 4X4 PICKUP, P/B V8 CORTEC ENGINE, AUTO TRANS., HR, SHOWS 128,412 MILES

CHEVROLET 3500 SGL CAB DUALLY PICKUP, P/B 6.6 DURAMAX DIESEL ENGINE, 6 SPD TRANS., SHOWS 155,075 MILES

CEMENT TRAILER

2001 SHOPMADE T/A PNEUMATIC BULK CEMENT TRAILER

VAC TRAILER

2012 GALLEGOS T/A 130 BBL VAC TRAILER, W/ SIDE MTD WALKWAY, HOSE TROUGH, SPRING SUSP., LANDING GEAR

HEAVY HAUL TRAILERS

2014 BLACKSTONE 3 AXLE 52' OAL W/ 10' NECKDROP DECK TRAILER, RTB

2012 TRAILZE MODEL- TE1200F59, AXLE 60 TON RGN LOWBOY TRAILER, 60' OAL W/ 12' NECK, POP UP ROLLERS, RTB, INVERTED 5TH WHEEL

2012 VIKING 5 AXLE LOWBOY TRAILER, 58' OAL W/ 12' NECK, PUP UP ROLLERS, RTB

2011 SCONA LB60 4 AXLE OILFIELD LOWBOY TRAILER, 102"W X 45'L, 12' NECK, 4' FLIPBOX, (2) AIR KICK ROLLERS, 1ST AXLE LIFT, RTB

(3) 2009-2008 DIRECT 48' TANDEM SPREAD AXLE FLOATS, W/ RATCHET STRAPS, PIPE STAYS

2008 PITTS T/A EQUIPMENT TRAILER, 47' OAL

2007 FONTAINE MODEL TP44880SLAH, 48' T/A FLOAT W/ 72' STRETCH W/ RATCHET STRAPS, PIPE STAYS

1983 TRANSPORT SYSTEMS 75 TON, 3 AXLE RGN DROPDECK TRAILER, 48'L W/ 15' NECK & REAR PIN ON T/A, 25/75R22.5" TIRES

JEEP / BOOSTER

1990 ROTEC TEJP268W T/A JEEP, 240" FROM KP TO CENTER OF AXLES, 8" NECK, 3' SLIDING 5TH WHEEL, SPRING SUSP

2012 SCONA TAT-20 T/A BOOSTER, 14' FROM PIN TO CENTER OF AXLES, (9) BAG SYSTEM, AIR STEERING LOCK

GOOSENECK TRAILERS

(3) 2019-2017 TEXAS PRIDE FT835530KGN T/A DUAL WHEEL FLATBED GN TRAILERS, 102"W X 40'L LOAD DECK, 8.6'L NECK, 15K# AXLES, ELEC/HYD BRAKES, DUAL LANDING GEAR, TOOLBOX

2019 LOAD TRAIL 40' TANDEM DUAL WHEEL FLATBED GN TRAILER, 102"W, 12K# AXLES, ELEC/ HYD DISC BRAKES

2018 BIG TEX 120A 16' T/A, BALL HITCH

(3) 2018 BIG TEX 16X6 W/ GOOSENECK T/A TRAILERS

2014 BIG TEX 3XGN-40 TA DUAL WHEEL FLATBED GN TRAILER, 100"W X 40'L LOAD DECK W/ 8.9'L NECK, 12K# AXLES, ELEC/ HYD BRAKES, DUAL LANDING GEAR, RIDGID CHAIN VISE

2011 CAM SUPERLINE 30' T/A GN FLATBED TRAILER, 12K# AXLES, ELECTRIC BRAKES, ALUM BULKHEAD, RIGID TOOLBOX

TANK TRAILERS

2015 LAMAR TA BP 900-GAL FUEL TRAILER, 12V FUEL PUMP, W/ 100' HOSE, TOOLBOX, FIRE EXT, HOSE RACKS

2007 POLAR TANK TRAILER, T/A 2 COMPARTMENT 8000-GAL FUEL TRANSPORT TRAILER, W/ GARNETT DIGITAL LEVEL/ SPILL CONTROLS, CONTROL TANK

BOP TRAILER

2013 BIG TEX T/A BUMPER PULL BOP TRAILER, 8' 6" W X 16' L NECK, PINTLE HITCH, LANDING GEAR, PARTS STORAGE CABINET W/ 7 - DRAWER TOOLBOX PARTS STORAGE BOX, STRAPE WINCHES

FLARE TRAILER

(2) 2018 TSI FLARE STACKS, 50' TALL MTD ON S/A TRAILER, W/ PROPANE PILOT, W/ 16' OUT RIGGERS ON EACH SIDE



2012 PETERBILT 587 HAUL TRUCK DY1 • YD1



2012 VIKING DY1 • YD1



2007 FORD F550 SERVICE TRUCK DY1 • YD1



1981 INT'L POLE TRUCK DY1 • YD2



2007 POLAR TANK TRAILER DY1 • YD1



INT'L 9200I HAUL TRUCKS DY1 • YD1



LIGHT TOWERS DY1 • YD1

2014 T/A BUMPER PULL PORTABLE FLARE TRAILER, W/ PROPANE PILOT FEED, 30' HYD RAISED STACK, ALL MTD ON 30' T/A TRAILER, 20' OUTRIGGERS

UTILITY TRAILER

SHOPBUILT 18' T/A BUMPER PULL UTILITY TRAILER

CARGO TRAILER

2017 LARK 16' T/A CARGO TRAILER, 16' X 7' X 6.6' BOX, V-NOSE, 3500# AXLES, SWINGING REAR DOORS, SIDE DOOR

HAULMARK T/A BUMPER PULL CARGO TRAILER, 16' X 7' X 6.6' BOX, V-NOSE, 3500# AXLES, RAMP DOOR

TRASH TRAILER

BIG TEX T/A 16' TRASH TRAILER, 16' X 7' X 6' BOX

SEA CONTAINERS

(2) 40' SEA CONTAINERS

9' SEA CONTAINER

8' SEA CONTAINER

(5) DOME STORAGE SHELTERS

(5) DOME CONTAINER SHELTERS

SKID STEER ATTACHMENTS

(2) SKID STEER FORK EXTENSIONS

(3) GRASS FORK GRAPPLES

(5) SNOWPLOW

(3) BRUSH HOGS

(2) VIBRATORY ROLLERS

BROOM

(3) ROTARY CULTIVATORS

(2) GRAPPLE ROCK BUCKETS

(4) HYDRAULIC ROCK BUCKETS

(2) JIB FORKLIFT JIBS

BUCKET MIXER

(2) TRENCHERS

(2) AUGERS W/ BITS

MISC

(2) NOV WS 2400 6X8 TRIPLEX FLUID ENDS

GARDNER DENVER 5.5" TRIPLEX FLUID END

10.6' X 40' 500 BBL ROUND WATER TANK

LINCOLN ELECTRIC 4800 TORCH MATE 5' X 9' PLASMA CUTTING TABLE, SN- 4800-19-920, W/ LINCOLN ELECTRIC 80 FLEXCUT PLASMA CUTTER

OWI 1200 EXPLORER WIRELINE HYD/ ELECTRIC UNIT

(4) PIPE TUBS

(8) BI PARTING IRON GATES

(12) WORK BENCHES W/ CABINETS

NEW RATCHET BINDERS, CHAINS

CAST IRON ANVILS

ELECTRIC WINCH

(3) PORTABLE TOLIETS

YARD #2 - OKLAHOMA CITY, OK

Directions: 3224 E-240 Service Rd., Oklahoma City, OK 73135

Checkout: 8am-5pm thru May 28, 2021
by APPT only

Contact: Rick Collins 405-439-7728

WINCH TRUCK

1981 INTERNATIONAL PAYSTAR DAY CAB T/A POLE TRUCK, P/B BIG CAM CUMMINS, 6+4 TRANS., 100K#, 60K#, 20K# WINCHES, 22' POLES W/ 1' EXTENSIONS, NEW MICHELIN STEER TIRES, NEW DRIVE TIRES, SHOWS 390,000 MILES

YARD #3 - CARRIZO SPRINGS, TX

Directions: 12304 S FM 393 Carrizo Springs, TX 78834

Checkout: 8am-5pm thru May 28, 2021
by APPT only

Contact: Rodney Chitty 930-255-1278

TRASH TRAILERS

(2) TEXAS BRAGG 5' X 10' TRASH TRAILERS

YARD #4 - MONAHANS, TX

Directions: 2008 W Hwy 80, Monahans, TX 79756

Checkout: 8am-5pm thru May 28, 2021
by APPT only

Contact: Josh 972-679-0444

POLE TRUCKS

1995 CHEVROLET KODIAK S/A DAYCAB POLE TRUCK, P/B V8 GAS ENGINE, 5 SPD TRANS., 175"WB, W/ 12' BED, 11' POLES, BRADEN PTO WINCH, AIR BRAKES, SHOWS 287,065 MILES

1983 MACK R747ST T/A DAY CAB POLE TRUCK, P/B BIG CAM CUMMINS, TWIN STICK TRANS., 12K# STEER, 19K# DRIVE AXLES, 295" WB, 22' BED, 20' POLES, (2) TULSA WINCHES, HR, RTB, SHOWS 128,161 MILES

1971 MACK R600 T/A DAYCAB POLE TRUCK, P/B MAXITORQUE DIESEL ENGINE, 5 SPD TRANS., 185" WB, W/ 13' BED, 12' POLES, TULSA PTO WINCH, RTB, SHOWS 668,338 MILES

ROUSTABOUT TRUCK

1984 FORD F600 S/A DAY CAB ROUSTABOUT TRUCK, P/B FORD V8 GAS ENGINE, 4 SPD TRANS., 2 SPD REAR END, W/ 13' BED, 12' POLES, TULSA PTO WINCH, SHOWS 140,466 MILES

PICKUPS

2009 CHEVROLET 2500HD SILVERADO LT CREW CAB LWB PICKUP, P/B V8 GAS ENGINE, AUTO TRANS., PW, PL, PM, SHOWS 341,437 MILES

(4) 2007-2004 CHEVROLET 2500 HD SILVERADO EXT CAB LWB 2X4 PICKUPS, P/B V8 VORTEC GAS ENGINE, AUTO TRANS., MW, MM, PL, SHOWS 239,683 MILES, 268,850 MILES & 328,096 MILES

2001 CHEVROLET 2500HD SILVERADO LS WXT CAB LWB 2X4 PICKUP, P/B V8 VORTEC GAS ENGINE, AUTO TRANS., PW, PL, PM

1998 CHEVROLET 2500 SILVERADO SGL CAB 2X4 PICKUP, P/B V8 CHEVY, AUTO TRANS.

1993 CHEVROLET 2500 CHEYENNE SGL CAB 2X4 PICKUP, P/B V8 GAS ENGINE, AUTO TRANS

(2) 1991 CHEVROLET 1500 SILVERADO EXT CAB LWB 2X4 PICKUPS, P/B SMALL BLOCK CHEVY, AUTO TRANS., PW, PL, MM

1990 CHEVROLET 2500 SGL CAB 2X4 PICKUP, P/B SMALL BLOCOK CHEVY, AUTO TRANS

1985 CHEVROLET CUSTOM DELUXE 20, SGL CAB LWB 2X4 PICKUP, P/B SMALL BLOCK CHEVY, AUTO TRANS

2004 GMC 2500HD SLE CREW CAB LWB 4X4 PICKUP, P/B 6.6L DURAMAX DIESEL, AUTO TRANS., PW, PL, PM, B&W GN HITCH, SHOWS 319,710 MILES

1984 GMC 2500 SEIRRA REG CAB LWB 2X4 PICKUP, P/B SMALL BLOCK CHEVY, AUTO TRANS

2002 DODGE RAM 2500 EXT CAB LWB 2X4 PICKUP, P/B V8 MAGNUM GAS ENGINE, AUTO TRANS., MM, MW, ML, SHOWS 248,477 MILES



FRANKS 1287/160 WELL SERVICE RIGS DY1 • YD1



(3) FRANKS 1287/160 DY1, YD1 DY1 • YD1



2007 FONTAINE DY1 • YD1



G.DENVER 200FX DY2 • YD4



1983 MACK R747ST DY1 • YD4



2009 CHEVROLET 2500 PICKUP DY1 • YD4



CIRCULATING TRAILER DY2 • YD4



FLARE TRAILERS DY1 • YD1



1983 FORD F150 XLT LARIAT EXT CAB, 2X4 PICKUP, P/B FORD V8 GAS ENGINE, AUTO TRANS., PW, PL, MM, A/C, HEAT, RADIO, SHOWS 54,821 MILES



BOWEN 2.5 POWER SWIVEL DY2 • YD4



FRAC TANK DY1 • YD6



TGH GARDNER DENVER PUMP DY1 • YD8



2007 WESTERN STAR WINCH TRUCK DY1 • YD8



2006 KALYN SIEBERT TRAILER DY1 • YD8



130 BBL KILL TRAILER DY1 • YD8



KILL TRUCKS DY1 • YD8

1983 FORD F150 XLT LARIAT EXT CAB, 2X4 PICKUP, P/B FORD V8 GAS ENGINE, AUTO TRANS., PW, PL, MM, A/C, HEAT, RADIO, SHOWS 54,821 MILES

TRAILERS

(3) FLOAT TRAILERS

BREWSTER 3S POWER SWIVEL, P/B FORD 6 CYL DIESEL, HYD PUMP, HYD HOSE REEL, CONTROLS, HYD & DIESEL TANKS, ALL MTD ON 3 AXLE BP TRAILER

MISC

35' HEX 2-7/8" KELLY, 23' SQUARE 2-7/8" KELLY

YARD #6 - SAN ISIDRO, TX

Directions: 5101 FM 1017, San Isidro, TX 78591

Checkout: 8am-5pm thru May 28, 2021 *by APPT only*

Contact: 432-694-2018

FRAC TANKS

(15) 500 BBL S/A FRAC TANKS

YARD #14 - ZAPATA, TX

Directions:

Checkout: 8am-5pm thru May 28, 2021 *by APPT only*

Contact: 432-694-2018

FRAC TANKS

(15) 500 BBL S/A FRAC TANKS

YARD #10 - COVINGTON, TX

Directions: Covington, TX- from the intersection of HWY 171 & Gathings Ave. travel south 1.3 miles (past First Baptist Church-Covington) to CR 1439. Turn right onto CR 1439 and travel 1.2 miles to Harper SW Disposal sight on right.

Checkout: 8am-5pm thru May 28, 2021 *by APPT only*

Contact: 432-694-2018

FRAC TANKS

(14) 500 BBL S/A FRAC TANKS

YARD #7 - WOODWARD, OK

Directions: 6020 Oklahoma Ave., Woodward, OK 73801

Checkout: 8am-5pm thru May 28, 2021 *by APPT only*

Contact: 432-694-2018

WINCH TRUCK

2005 MACK 4 AXLE WINCH TRUCK, P/B AC-400 MACK DIESEL ENGINE, 8 SPD MAXITORQUE TRANS., 252"WB, TULSA 64K# WINCH, SHOWS 459,264 MILES & 12,276 HRS

FOAM AIR UNIT

2005 FOAM AIR UNIT JG072 ARIEL COMPRESSOR, P/B DETROIT S-50 DIESEL ENGINE, SULLAIR COMPRESSOR, TRIPLEX MIST PUMP (NEEDS REPAIR), P/B 4 CYL DIESEL ENGINE, ALL MTD ON LUFKIN T/A STEP DECK TRAILER

MISC

8V-71 DETROIT DIESEL ENGINE W/ ALLISON 4460 TRANS., MTD ON 8' X 12' SKID

YARD #8 - WOODWARD, OK

Directions: 4413 Oklahoma Ave, Woodward, OK 73801

Checkout: 8am-5pm thru May 28, 2021 *by APPT only*

Contact: Kendal Cook 580-216-2990

PUMPS

(4) TGH GARDNER DENVER PUMPS W/ C13 CAT TRANS.

TRUCKS

(2) 2007-2006 MACK GRANITE TRUCKS, 8 SPD TRANS., TEE, SHOWS 115,000-300,000 MILES

2007 WESTERN STAR TANDEM STEER TRUCK, P/B S-60 DIESEL ENGINE, 18 SPD TRANS., 101 GVWR, RUFNECKS, SHOWS 35,000 MILES & 4,609 HRS

(2) 2007 WESTERN STAR 4 AXLE WINCH TRUCKS, P/B S-60 DIESEL ENGINE, 18 SPD TRANS., 86K GVWR RUFNECK, 80K# WINCH, RTB

TRAILERS

2006 KALYN SIEBERT 4 AXLE OILFIELD LOWBOY TRAILER, RTB OVERLAND ALUMINUM 130 BBL KILL TRAILERS

OIL VACS

SAGE OIL VAC TRAILER MTD (UNUSED)

SAGE OIL VAC CONTAINER MTD

CAT WALKS

(2) CANRIG PC 1,000 HYD CAT WALKS

SWIVELS

2.5 SWIVEL, P/B CAT ENGINE, MTD ON TRAILER

2.5 SWIVEL, P/B CAT ENGINE, SKIDDED

YARD #9 - CISCO, TX

Directions: 14818 I-20, Cisco, TX 76437

Checkout: 8am-5pm thru May 28, 2021 *by APPT only*

Contact: 432-694-2018

CEMENT EQUIPMENT

2006 RIAL T/A CEMENT UNIT, W/ (1) DEMAY TRIPLEX PUMP, (1) 500 SAK DRY BULK POD, (2) CENT PUMPS, P/B DUETZ 6 CYL DIESEL ENGINE, (2) 500-GAL WATER TANKS, MIX TANK, OPERATORS CONTROLS, P/B DETROIT S-60 DIESEL ENGINE, ALLISON 750 TRANS.

1988 INTERNATIONAL T/A CABOVER CEMENT MIXER TRUCK, P/B CUMMINS 6 CYL DIESEL ENGINE, EATON FULLER 9 SPD TRANS., W/ (1) GORMAN RUPP CENT PUMP, (1) MISSION MAGNUM CENT PUMP, (1) 500 SACK POD, MIXING TANK, OPERATORS CONTROLS, 315/80R22.5" FRONT & 11R22.5" REAR TIRES, SHOWS 111,658 MILES

YARD #13 - ANDREWS, TX

Directions: 701 Mustang Dr., Andrews, TX 79714

Checkout: 8am-5pm thru May 28, 2021 *by APPT only*

Contact: 432-694-2018

PICKUPS

(2) 2013 FORD F350 CREW CAB PICKUPS

(2) 2012 FORD F350 CREW CAB PICKUPS

(2) 2012 FORD F250 CREW CAB PICKUPS

2007 FORD F250 CREW CAB PICKUP

2006 FORD F350 CREW CAB PICKUP

2005 FORD F150 XLT PICKUP

YARD #15 - MONAHANS, TX

Directions: 2400 S Ursula St. Monahans, TX 79756

Checkout: 8am-5pm thru May 28, 2021 *by APPT only*

Contact: Mike Glover 325-650-2288 *24 HR NOTICE MUST BE GIVEN*

TANKS

- (22) 500 BBL GAS BUSTERS FLOWBACK TANK TRAILERS
- (10) 250 BBL GAS BUSTERS FLOWBACK TANK TRAILERS
- (4) 500 BBL OPEN TOP TANK TRAILERS
- (5) 500 BBL FRAC TANK TRAILERS
- (2) 500 BBL FLOWBACK SAND & OIL SEPERATOR TANK TRAILERS
- (2) 250 BBL END SKIDDED FLOWBACK TANKS
- (7) 500 BBL RND SKIDDED ACID TANKS

YARD #17 - FORT MORGAN, CO

Directions: 12809 Energy Road, Fort Morgan, CO
Checkout: 8am-5pm thru May 28, 2021
 by APPT only
Contact: 432-694-2018

CRANES

- (3) 2007-2001 STERLING TRUCK MTD CRANES

CONSTRUCTION

- CASE 586C FORKLIFT
- 1991 FORKLIFT

TRUCKS

- (2) 2012-2007 KENWORTHS
- (2) 2011-2006 FREIGHTLINERS
- (2) 2008-1999 PETERBILTS
- 2005 WESTERNSTAR
- 2002 INT'L 9200
- 1981 INTERNATIONAL DUMP TRUCK
- 1979 MACK R SERIES TRUCK

PICKUPS

- 2013 FORD F-350
- (4) 2015-2006 CHEVROLET SILVERADO PICKUPS
- 2012 DODGE 4X4 DIESEL

TRAILERS

- (4) TRAILER ACID TRANSPORT TRAILERS
- (3) NITROGEN TRANSPORT TRAILERS
- (6) UTILITY TRAILERS
- (2) TRASH PUMP TRAILERS

WELL SERVICE TOOLS

- FOSTER 58-93R TUBING TONGS
- BJ MARK IV ROD TONGS

MISC

- COMPRESSOR PACKAGE QUINCY C-133
- 2001 WHEAT P-317 MIST PUMP
- 2001 WHEAT P-318 MIST PUMP
- 2003 TA-3 P-319 MIST PUMP
- MIST PUMP MODEL T365
- FOAM AIR UNIT
- GD PAH MUD PUMP P/B CATC15 SKIDDED
- RAY-MAN CONVEYOR
- 2005 180 ATOKA NITROGEN PUMP
- FOAM AIR UNIT
- 2004 TCE 7X14 2-AXLE DOGHOUSE
- 2011 PARK ACCUMULATOR TRAILER
- BASE BEAM
- 660 SACK BULK CEMENT UNIT

YARD #19 - ROOSEVELT, UT

Directions: 2602 West 2000 South Roosevelt, UT
Checkout: 8am-5pm thru May 28, 2021
 by APPT only
Contact: 432-694-2018

TRAILERS

- 2012 BIG TEX UTILITY FLATBED TRAILER
- (3) 2008-2007 TEXAS BRAGG 16' UTILITY TRAILERS
- (2) 2007-2004 PJ 16' UTILITY TRAILER
- (10) 2007-2006 ATCO 16' DOGHOUSE TRAILERS
- 2006 NASH TRAILER

DAY 2

LIQUIDATION OF 4 FISHING & RENTAL TOOL STORES SONORA, TX - BISHOP, TX - "WOODWARD, OK - RANGELY, CO

FISHING / RENTING & WELL SERVICE TOOLS

- PUMPS * SWIVELS * PITS * JARS * OVER SHOTS * BASKET & SPIRAL GRAPPLES * CONTROLS
- BUMPER SUBS * X-OVER SUBS *

- MILLS & SCRAPERS * SPOOLS & FLANGES * TUBING & WIRELINE SPEARS * SLIP TYPE ELEVATORS * AIR SLIPS * BOP'S * CLOSING UNITS
- SHOP EQUIPMENT

TUBULARS

- 6" OD DRILL COLLARS
- 4" OD DRILL COLLARS
- 3" OD DRILL COLLARS
- WASHPIPE
- 2-7/8" TUBING PH6

Preview: Starting May 7th, 2021
Checkout: 8am-5pm thru May 28, 2021
Checkout: 8am-5pm thru May 28, 2021
 by APPT only

INVENTORIES BEING ADDED AT THE TIME OF PRINTING – VISIT OUR WEB SITE FOR LISTINGS AT EACH OF THE FOUR LOCATIONS LISTED BELOW

YARD #5 - SONORA, TX

Directions: 603 North Crocket, Sonora, TX 79650
Contact: Tony Jones 325-647-3506

YARD #11 - BISHOP, TX

Directions: 1006 E 1st Street, Bishop, TX 78343
Contact: Terry Jones 254-434-1528

YARD #7 - WOODWARD, OK

Directions: 500 Oklahoma Ave, Woodward, OK 73801
Contact: 432-694-2018

YARD #18 - RANGELY, CO

Directions: 2603 East Main Street, Rangely, CO
Contact: 432-694-2018

YARD #1 - MIDLAND, TX

WELL SERVICE TOOLS

- ELEVATORS/ AIR SLIPS/ TUBING TONGS/ WEIGHT INDICATORS/ ROD HOOKS/ BOP'S

PUMPS

- NATIONAL JWS TRIPLEX PUMP, P/B 6V-71 DETROIT DIESEL ENGINE, 5860 ALLISON TRANS., MISSION 3X4X11 CENT PUMP, 6X3X5 CIRCULATING TANK, DIESEL & HYD TANKS, ALL MTD ON 25' X 8' SKID



2007 WESTERN STAR TANDEM STEER TRUCK DY1 • YD8



SAGE OIL VAC DY1 • YD8



F250 PICKUP DY1 • YD13



TUBULARS DY2 • YD5



FISHING & RENTAL TOOLS DY2 • YD5



FISHING & RENTAL TOOLS DY2 • YD5



FISHING & RENTAL TOOLS DY2 • YD5



MIXING PLANT DY1 • YD1



FISHING & RENTAL TOOLS DY2 • YD5



FISHING & RENTAL TOOLS DY2 • YD5



BOWEN 3.5 POWER SWIVEL DY2 • YD1



FISHING & RENTAL TOOLS DY2 • YD5

AUCTION

TUES/WED
MAY 11/12, 2021
9AM CST
Each Day



Online Bidding Provided by



**Permian International
Energy Services, LLC**

P.O. BOX 3820
Midland, TX 79702

www.piauction.com
www.permianint.com

SWIVEL

BOWEN 3.5 POWER SWIVEL, 120 TON, P/B CAT 3126 DIESEL ENGINE, ELEC START, RADIATOR, GAUGE PANEL, SUNSTRAND HYD REMOTE, UTILITY WINCH, HOSE REELS & HOSES, HYD OIL & FUEL TANKS, BATTERY & TB, TUBING STRIPPER, SKIDDED

PIT

6'H X 8'W X 20'L, (2) COMP FLAT BOTTOM REVERSE PIT, GAS BUSTER, SIDE MTD WALKWAY, INTERNAL PLUMBING, SKIDDED

DRILL COLLARS

- (9) 8" OD SPIRAL DRILL COLLARS W/ 6-5/8" REG CONNS, SGL RECESSED
- (23) 6" OD SLICK DRILL COLLARS W/ 4-1/2" XH CONNS, SGL RECESSED
- (15) 3" & 3/12" DRILL COLLARS

DRILL PIPE

(289 JTS) 8,959 FT. 4-1/2" DRILL PIPE, G, 16.60#, 4-1/2" XH CONN, HB, IPC 6-1/4" - 6-1/8" TJ

YARD #4 - MONAHANS, TX

PUMPS

(5) CIRCULATING TRAILER W/ GARDNER DENVER 200FFX DUPLEX PUMPS, P/B 4-71 DETROIT DIESEL, TRANS., 25' X 8' X 5' (2) COMP CIRCULATING PIT W/ MUD GAUGE, SHEAR RELIEF, MUD VALVES, 2" HARDLINE, HARDLINE RACKS, FOLDING WALKWAYS, DIESEL DAY TANK, ALL MTD ON 40' T/A SHOP BUILT STEP DECK TRAILERS, 5TH WHEEL

CIRCULATING TRAILER W/ GARDNER DENVER 200FFX DUPLEX PUMP, P/B 6 CYL WAUKESHA, TRANS., 25' X 8' X 5' (2) COMP CIRCULATING PIT W/ MUD GAUGE, SHEAR RELIEF, MUD

VALVES, 2" HARDLINE, HARDLINE RACKS, FOLDING WALKWAYS, DIESEL DAY TANK, ALL MTD ON 40' T/A SHOP BUILT STEP DECK TRAILER, 5TH WHEEL

8' X 18' SKID MTD GARDNER DENVER 200FFX DUPLEX PUMP, P/B 6 CYL CAT TURBO DIESEL ENGINE, EATON FULLER 5 SPD TRANS., CLUTCH, W/ MUD GAUGE, SHEAR RELIEF, 2" HARDLINE, CONTROL PANEL, HYD TANK, DIESEL DAY TANK, SHOWS 1,430 HRS

8' X 18' SKID MTD GARDNER DENVER 200FFX DUPLEX PUMP, P/B OSB 6.7L CUMMINS, EATON FULLER 5 SPD TRANS., CLUTCH, W/ MUD GAUGE, SHEAR RELIEF, 2" HARDLINE, HYD TANK, DIESEL DAY TANK, BALL VALVES

(3) GASO DUPLEX PUMPS

POWER SWIVELS

(2) **BOWEN 2.5 POWER SWIVELS**, P/B 6CYL WANKESHA DIESEL ENGINE, HYD PUMP, (2) HYD HOSE REELS, CONTROLLER, DIESEL & HYD TANKS, MTD ON T/A BP TRAILERS

BOWEN 2.5 POWER SWIVEL, P/B 3 CYL DETROIT DIESEL ENGINE, HYD PUMP, HOSE REEL, UTILITY WINCH, DIESEL TANK, HYD TANK, MTD ON T/A BP TRAILER

YARD #19 - ROOSEVELT, UT

SWIVELS

- (2) 2006 AMERICAN UTILITY SWIVEL TRAILERS
- (2) BOWEN S2.5 SWIVELS

PUMPS

GARDNER DENVER PAH MUD PUMP

TUES/WED • MAY 11/12, 2021 • MIDLAND, TEXAS • 9AM (CST) EACH DAY