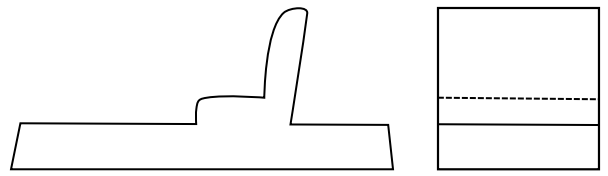
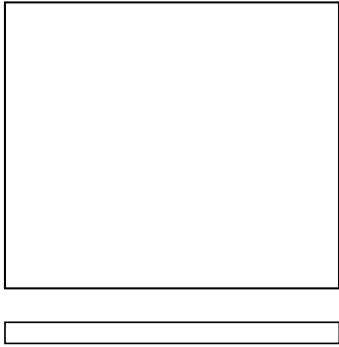


Acutabove Woodworking

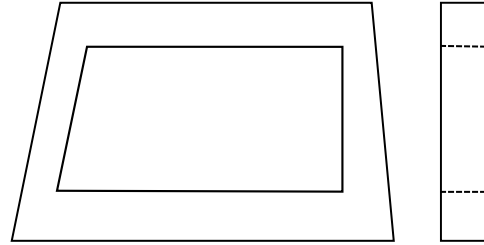
Steam Roller Toy



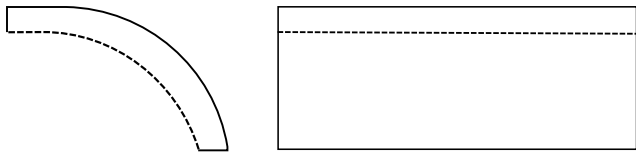
Cabin Core. Cut 1 from 3/4" thick material.



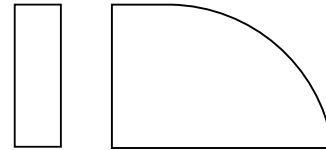
Cabin Roof. Cut 1 from 1/8" thick material.



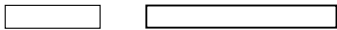
Cabin Walls. Cut 2 from 1/4" thick material



Roller cover Body
Make 1 from 3/4" thick material



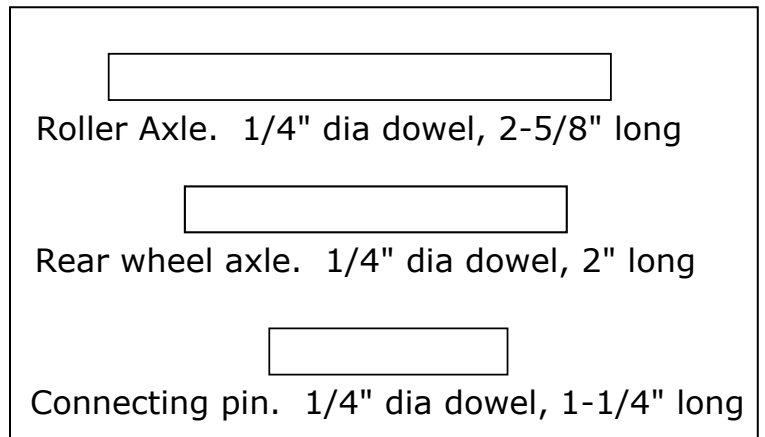
Roller Cover Sides
Make 2 from 1/4" thick material



Tool box lid.
Make 1 from 1/8" thick material



Tool box body.
Make 1 from 1/4" thick material

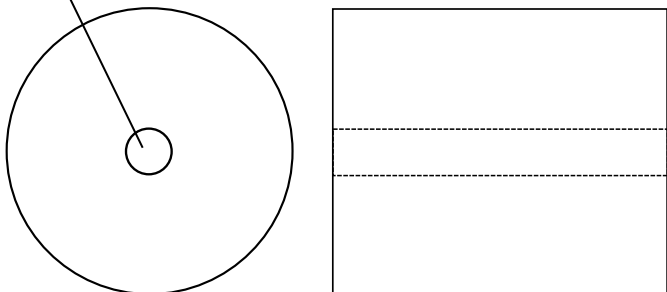


Roller Axle. 1/4" dia dowel, 2-5/8" long

Rear wheel axle. 1/4" dia dowel, 2" long

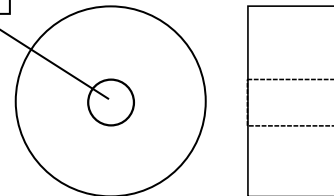
Connecting pin. 1/4" dia dowel, 1-1/4" long

1/4" dia.



Roller Wheel.
1-1/2" dia dowel, 1-3/4" long

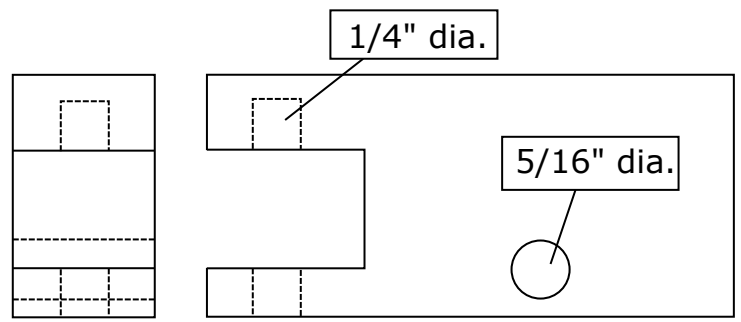
1/4" dia.



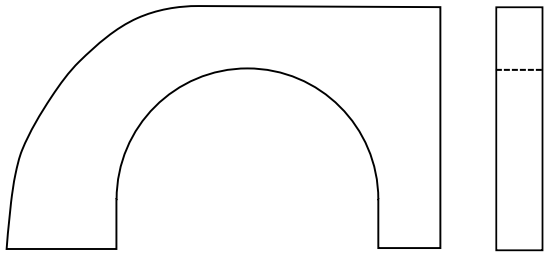
Rear Wheels
Make 2 from 1/2" thick material

Acutabove Woodworking

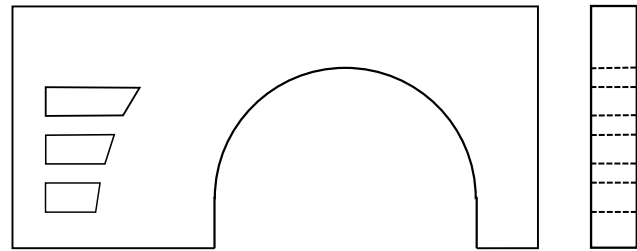
Steam Roller Toy



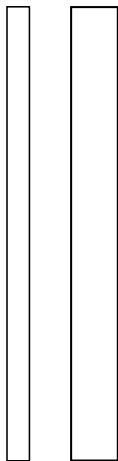
Main Body Core.
Cut 1 from 3/4" thick material.



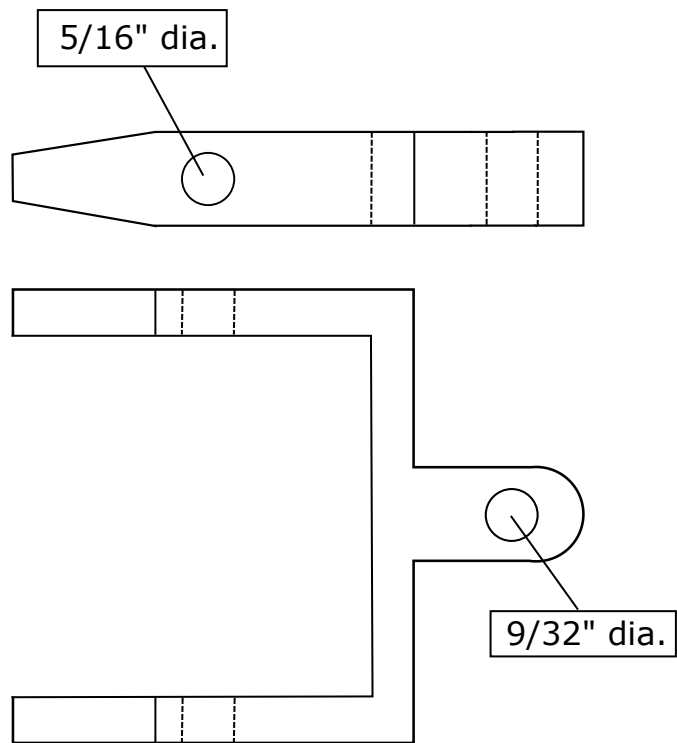
Main body Outer layer.
Cut 2 from 1/4" thick material.



Main Body Inner Layer.
Cut 2 from 1/4" thick material



Front Roller Guard.
Cut 1 from 1/8" thick material



Roller Wheel Bracket.
Cut 1 from 1/2" thick material