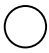
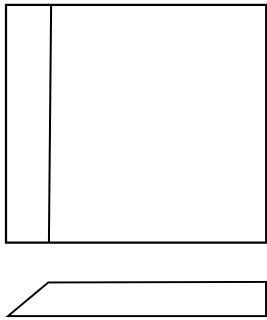


1/4" dia. dowels. Cut 4 @ 2" long 

Acutabove Woodworking

Skid Steer Toy

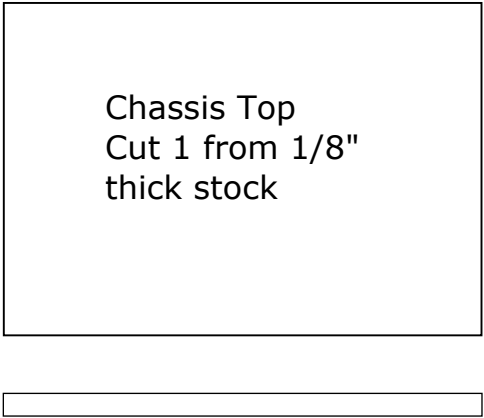
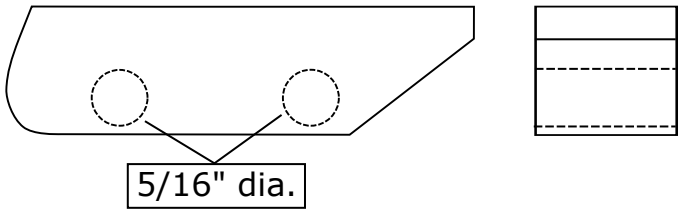
Bucket Floor
Cut 1 from 3/16" thick stock



Bucket Rear Wall
Cut 1 from 3/16" thick stock

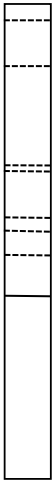
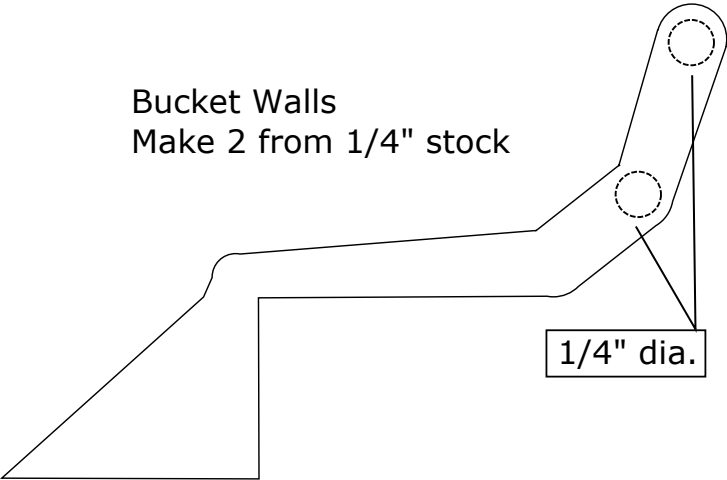


Skid Steer Chassis
make 1 from 3/4" stock

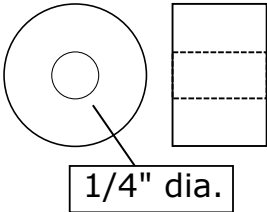


Chassis Top
Cut 1 from 1/8" thick stock

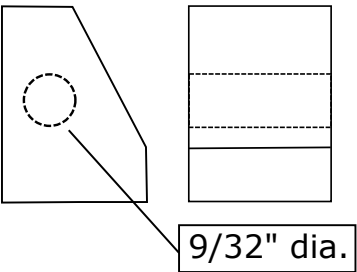
Bucket Walls
Make 2 from 1/4" stock



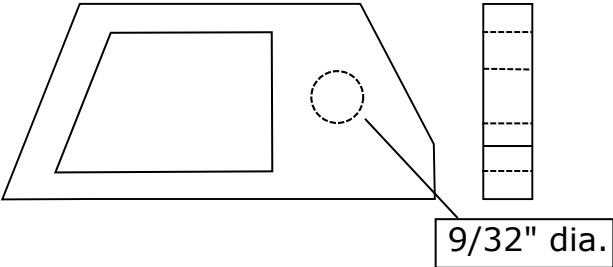
Wheels
Make 4 from 1/2" stock



Cabin Core
Make 1 from 3/4" stock



Cabin Walls
Make 2 from 1/4" Stock



Cabin Roof
Make 1 from 1/8" stock

