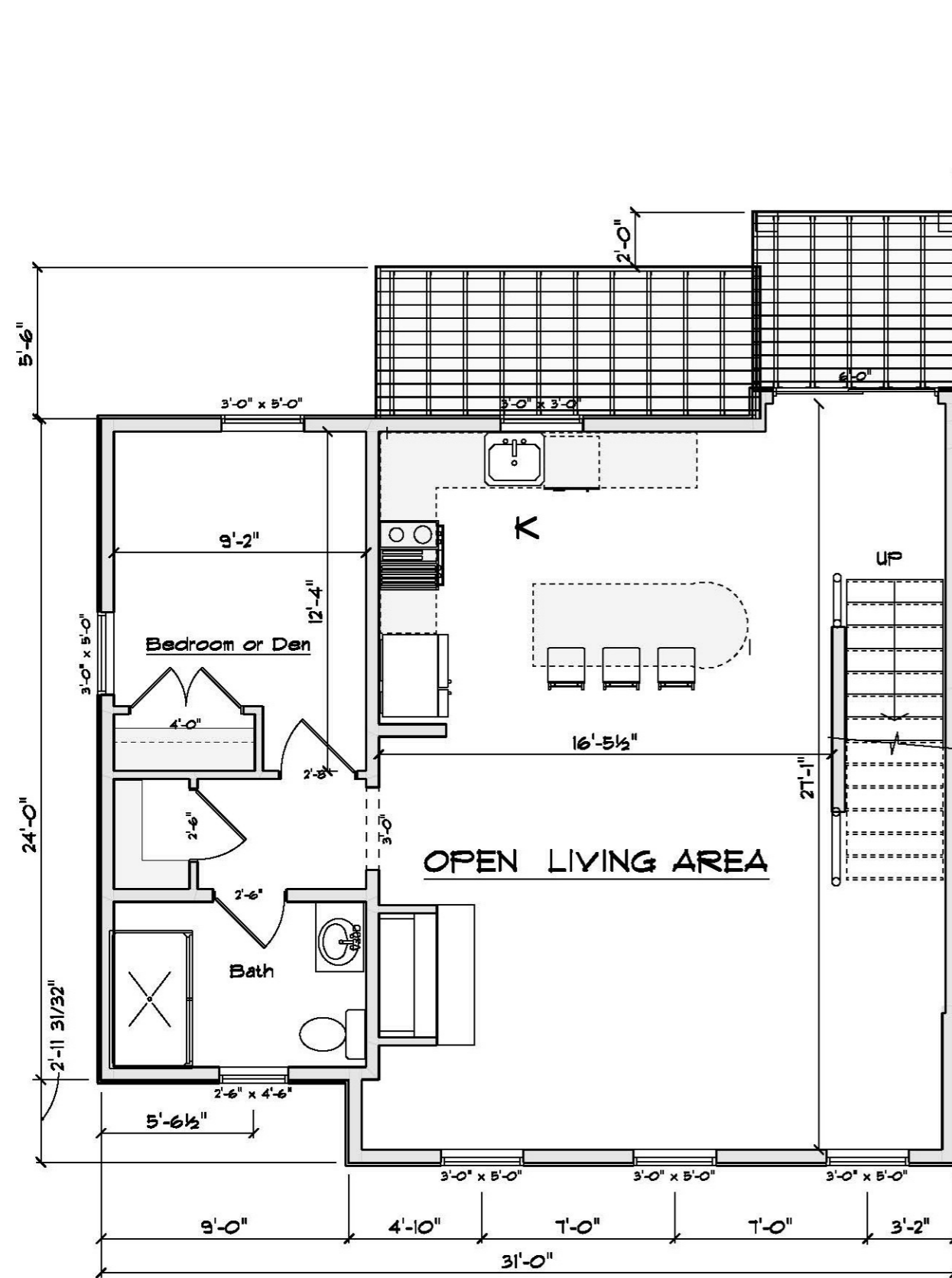


Unit A Level 1

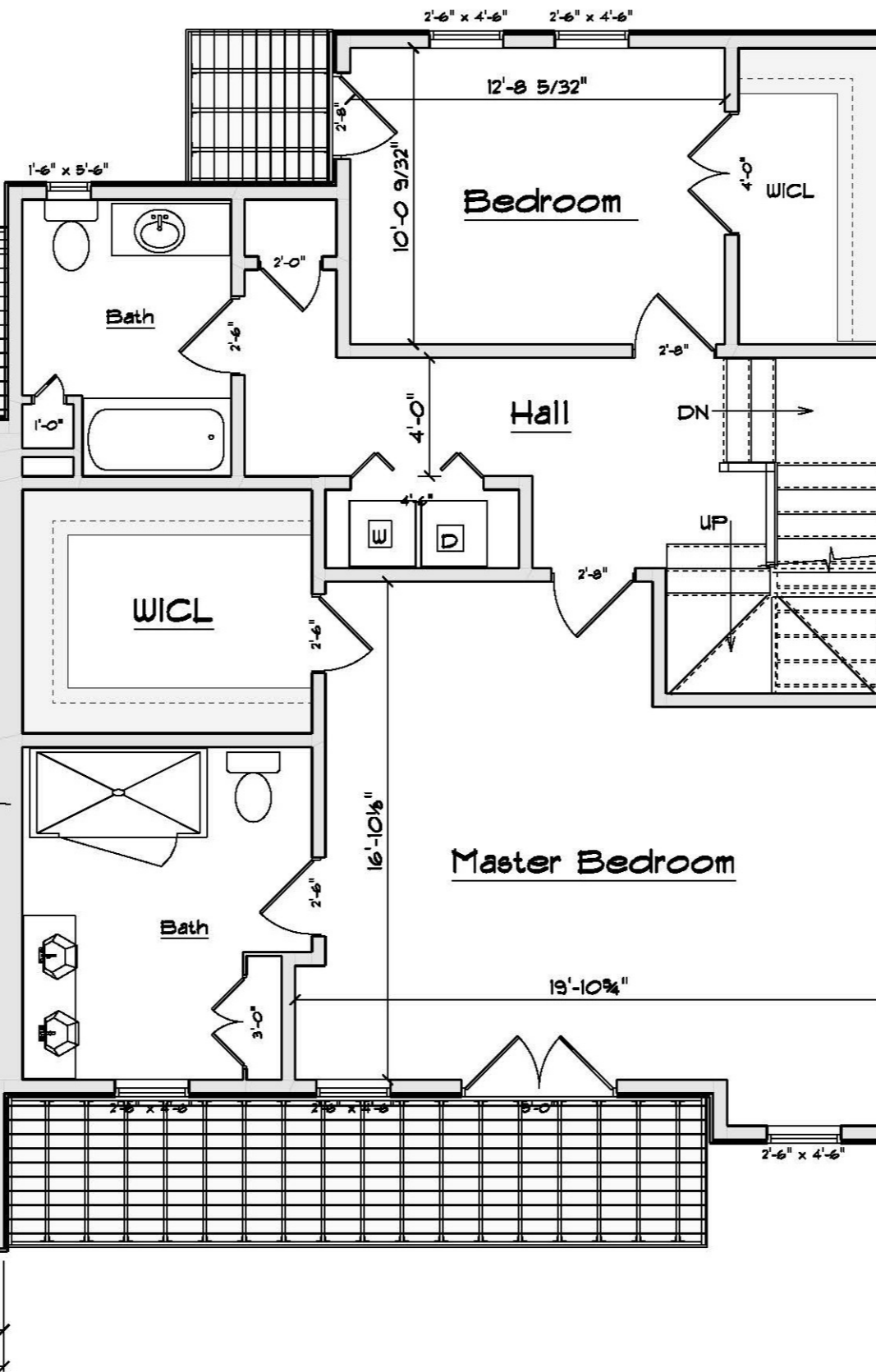
Unit B Level 1

Unit C Level 1

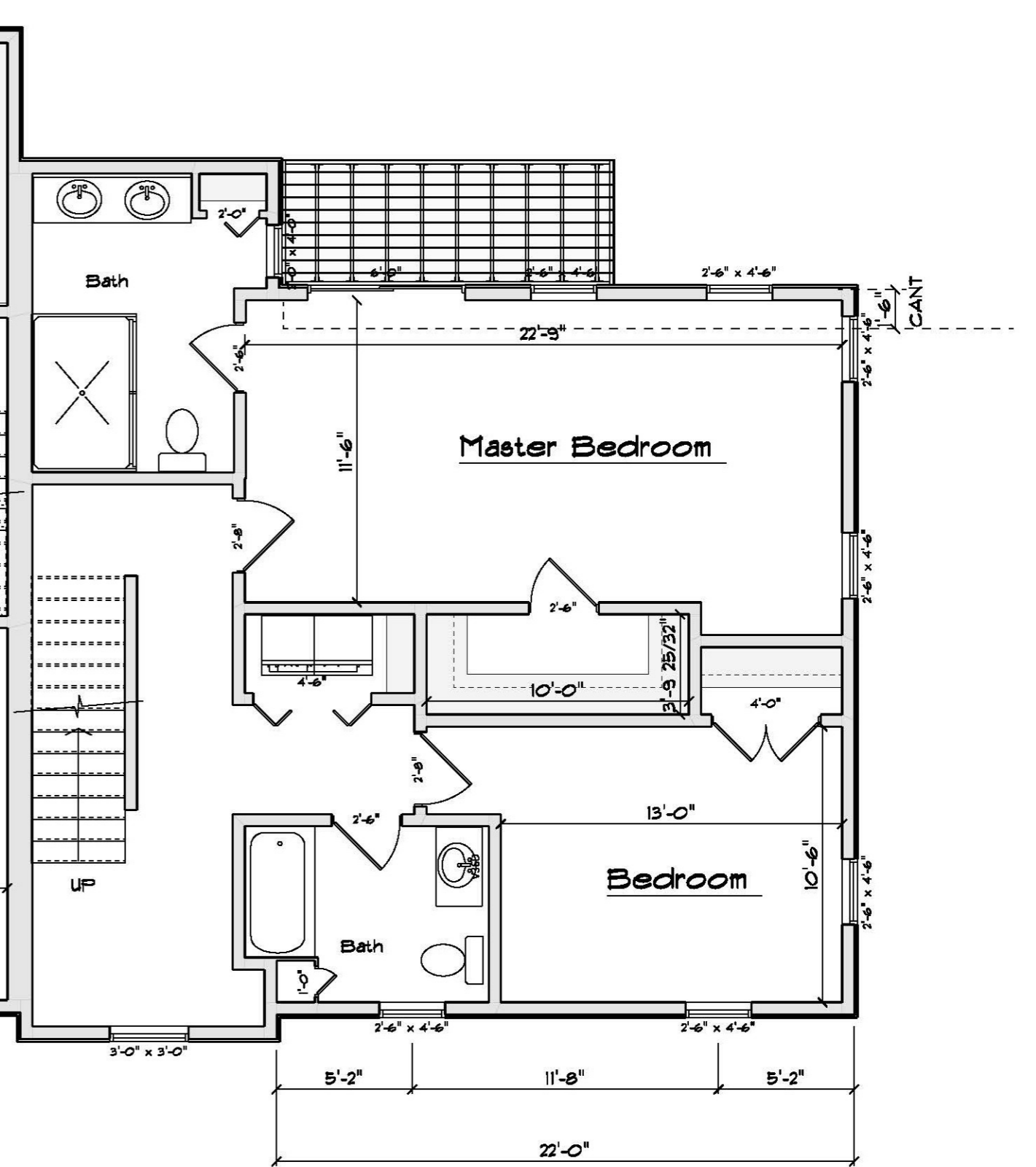
DDS	5-11 Washington Street Ipswich, MA
Units A, B, C Level 1	Dugger Development Services
<small> PRINT DATE: Wednesday, March 23, 2022 SCALE: 3/8" = 1'-0" </small>	<small> 25 Beach Road Gloucester, MA 01930 978-618-3391 jddata1@comcast.net </small>
02/25/2022	



Unit A Level 2

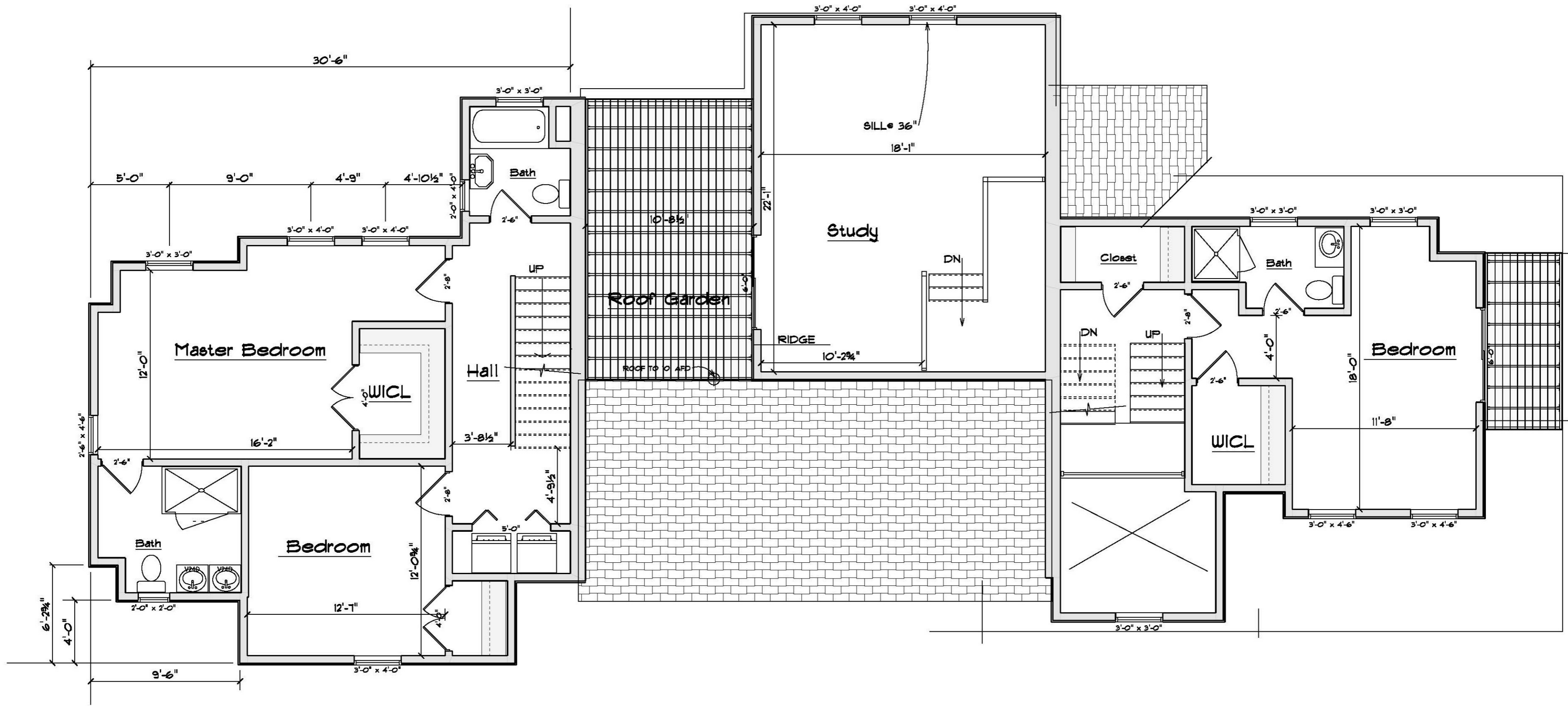


Unit B Level 2



Unit C Level 2

DDS	5-11 Washington Street Ipswich, MA
Units A, B, C Level 2	
PRINT DATE: Wednesday, March 23, 2022 SCALE: 3/8" = 1'-0"	Dugger Development Services 25 Beach Road Gloucester, MA 01930 978-618-5591 dd@ddsma.com
02/25/2022	



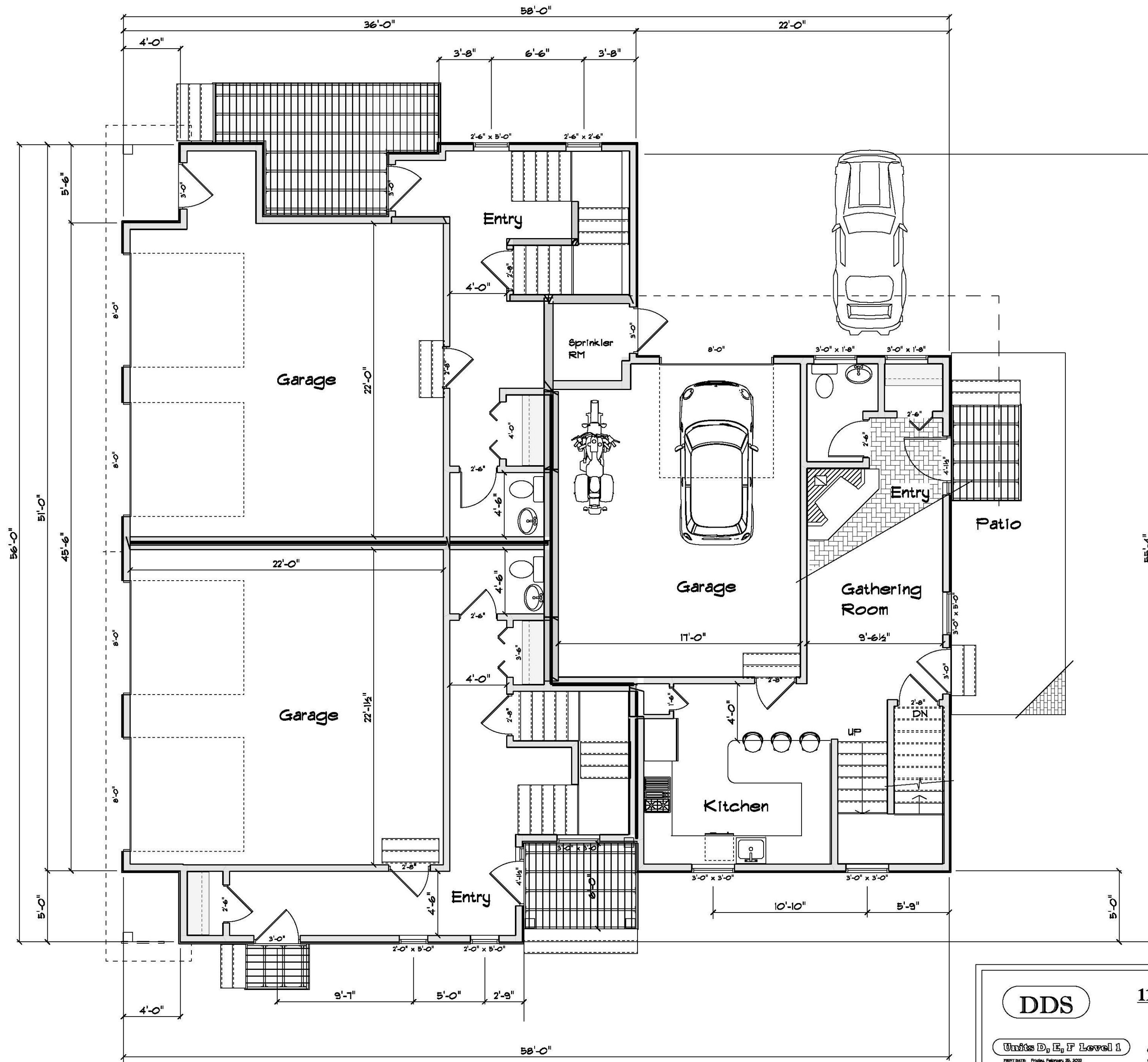
Unit A Level 3

Unit B Level 3

Unit C Level 3

	5-11 Washington Street Ipswich, MA	
	Dugger Development Services	
Units A, B, C Level 3		
PREPARED: Wednesday, March 23, 2022 SCALE: 3/16" = 1'-0"	978-618-3391 jdedia1@comcast.net	25 Beach Road Gloucester, MA 01930
02/25/2022		

Unit E Level 1

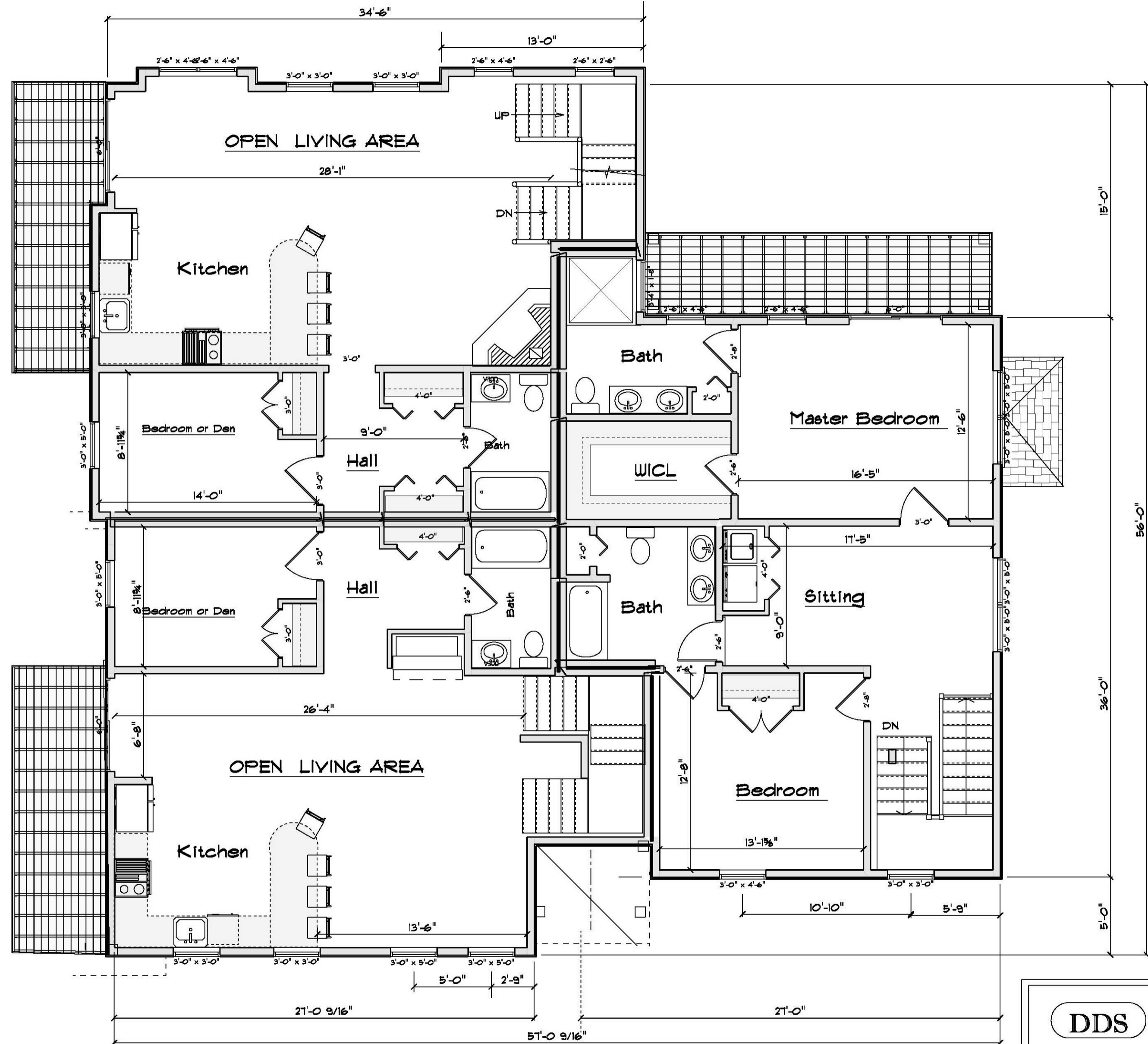


Unit D Level 1

Unit F Level 1

	11 Washington Street Ipswich, MA	
	Dugger Development Services <small>© 2012 Dugger Development Services</small> <small>25 Reed's Road, Gloucester, MA 01930</small> <small>978-628-3391 dd@ddsma.com</small>	
Units D, E, F Level 1 <small>PRINT DATE: Friday, February 25, 2022</small> <small>SCALE: 3/8" = 1'-0"</small>		
02/25/2022		
_____ _____ _____		

Unit E Level 2



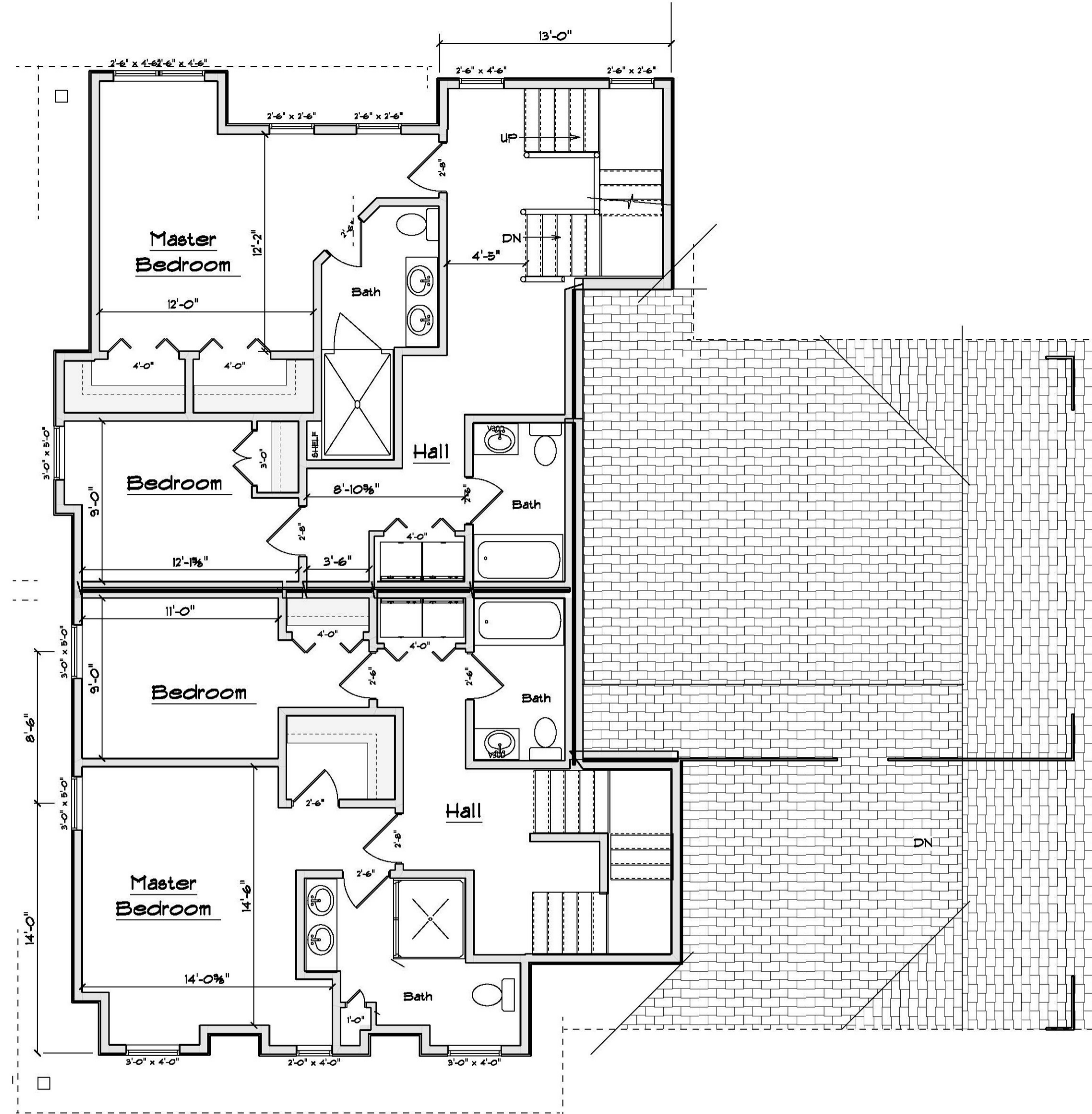
Unit D Level 2

3/16" = 1'-0"

Unit F Level 2

	11 Washington Street Ipswich, MA	
	Dugger Development Services <small>©2017-2022 DDS</small> <small>25 Beach Road Gloucester, MA 01930</small> <small>978-616-3391 jdelaf@concess.com</small>	
Units D, E, F Level 2		
<small>PRINT DATE: Friday, February 25, 2022</small> <small>SCALE: 3/16" = 1'-0"</small>		
02/25/2022		

Unit E Level 3

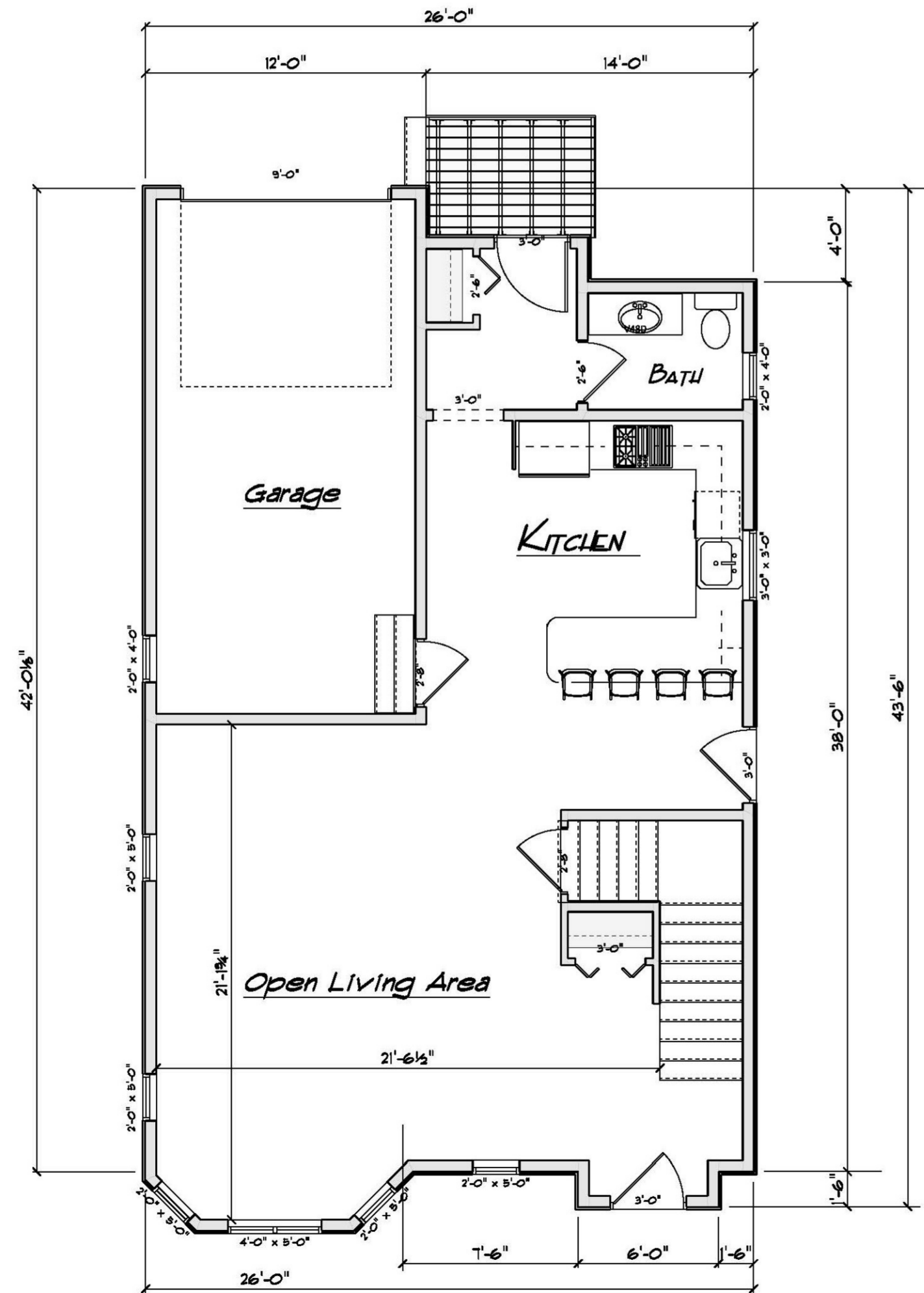


Unit D Level 3

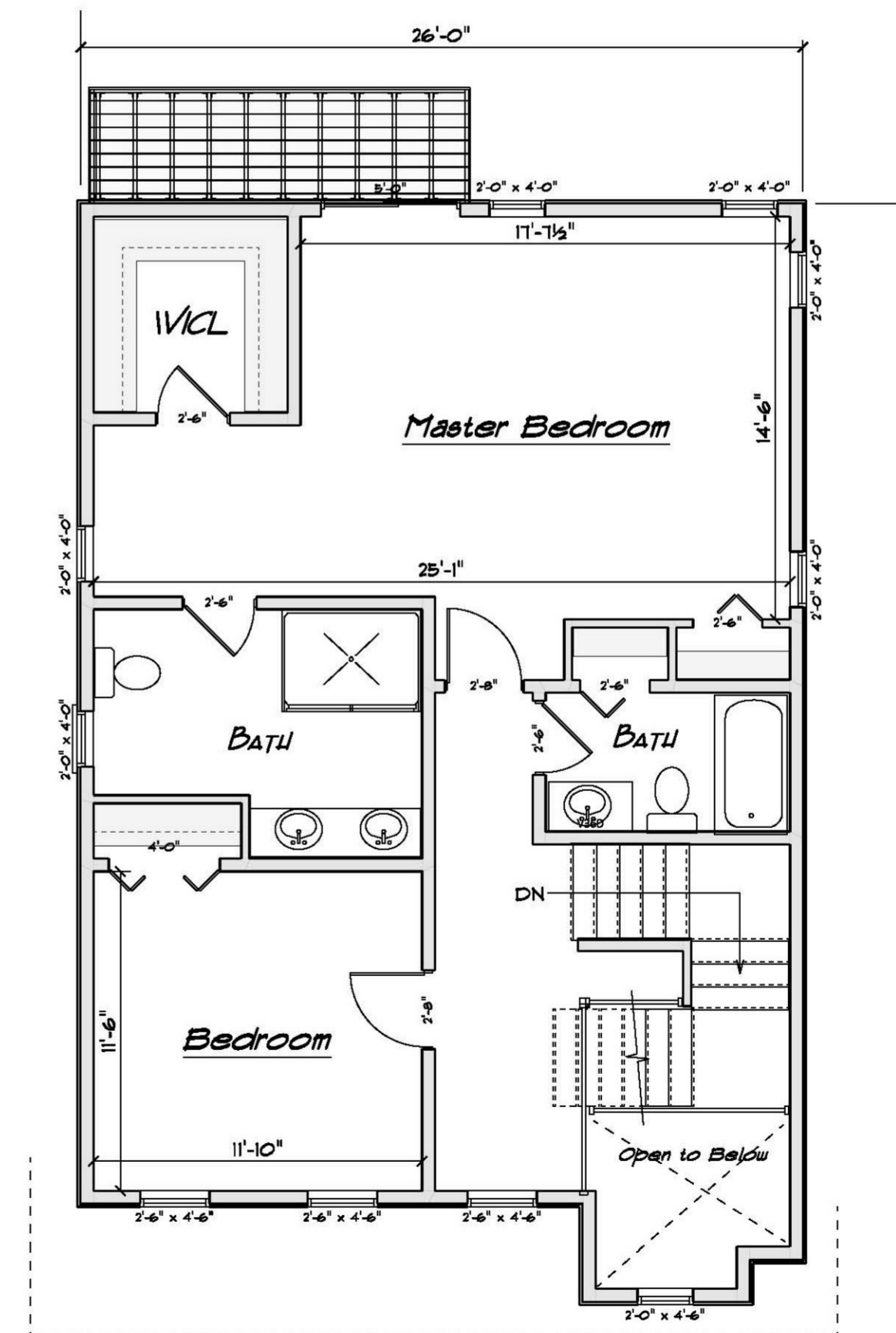
Unit F Level 3

DDS	5-11 Washington Street Ipswich, MA	
	Dugger Development Services	
Units D, E, F Level 3		
<small>PRINT DATE: Friday, February 26, 2011 SCALE: 3/16" = 1'-0"</small>	<small>©2011 All rights reserved 978-438-3391, judala1@comcast.net</small>	<small>21 Beach Road Glossence, MA 01930</small>
02/25/2012		

DDS	5-11 Washington Street Ipswich, MA	
	Dugger Development Services	
Unit G Level 1 & 2		
<small>PROJECT: Friday, February 25, 2022 SCALE: 3/4" = 1'-0"</small>		
<small>35 Beach Road Gloucester, MA 01930 978-688-3391 dd@ddsma.com</small>		
02/25/2022		

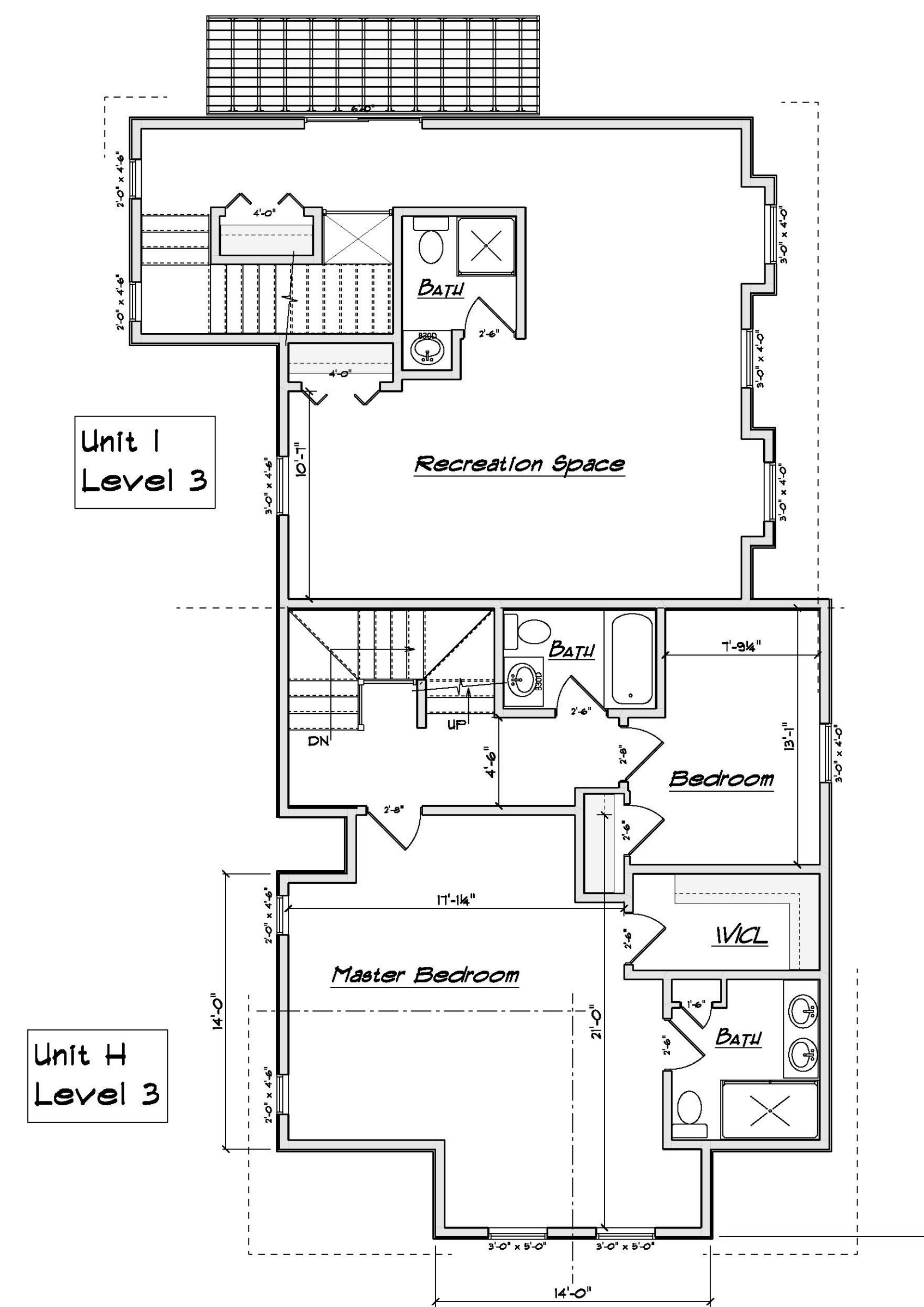
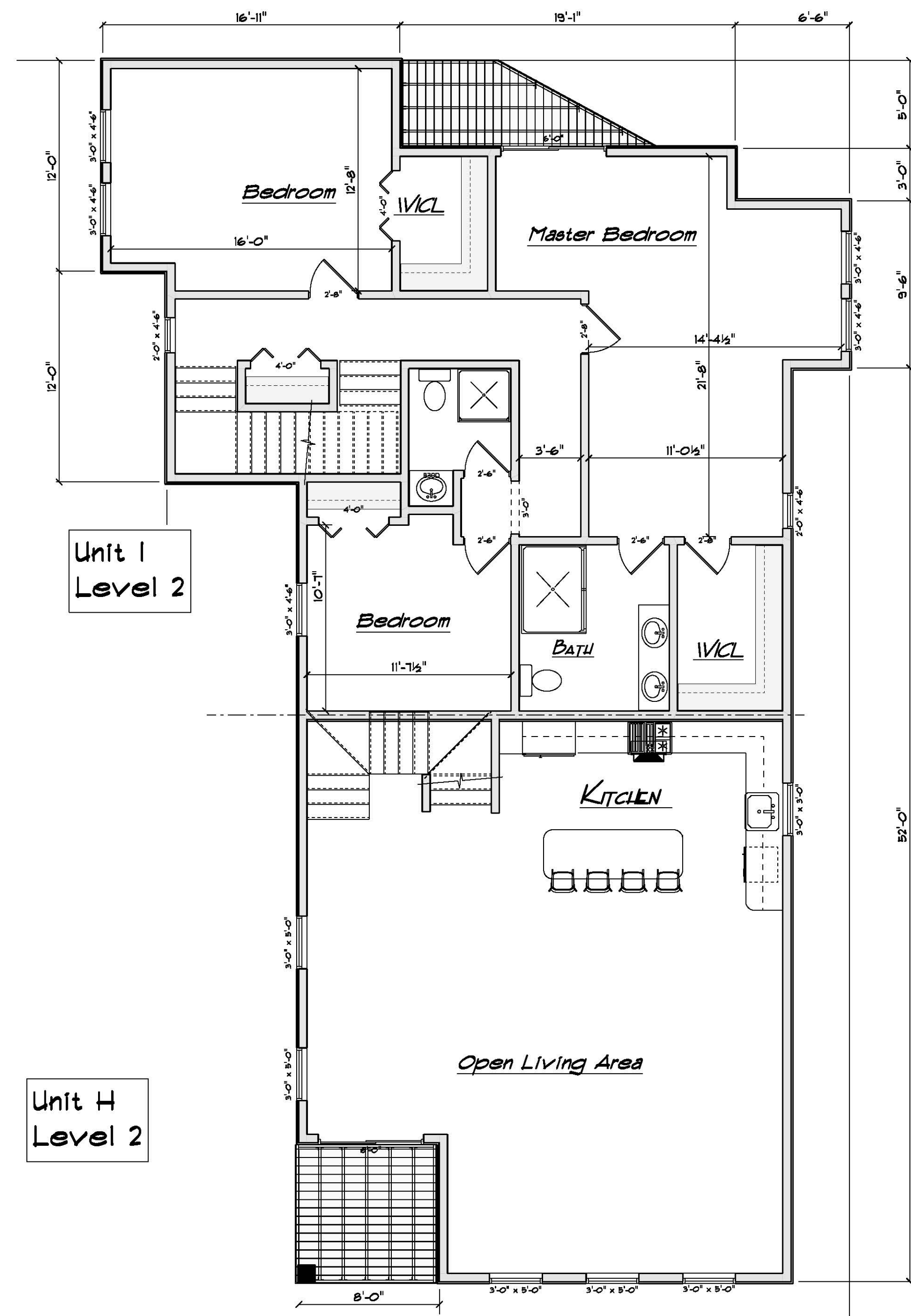
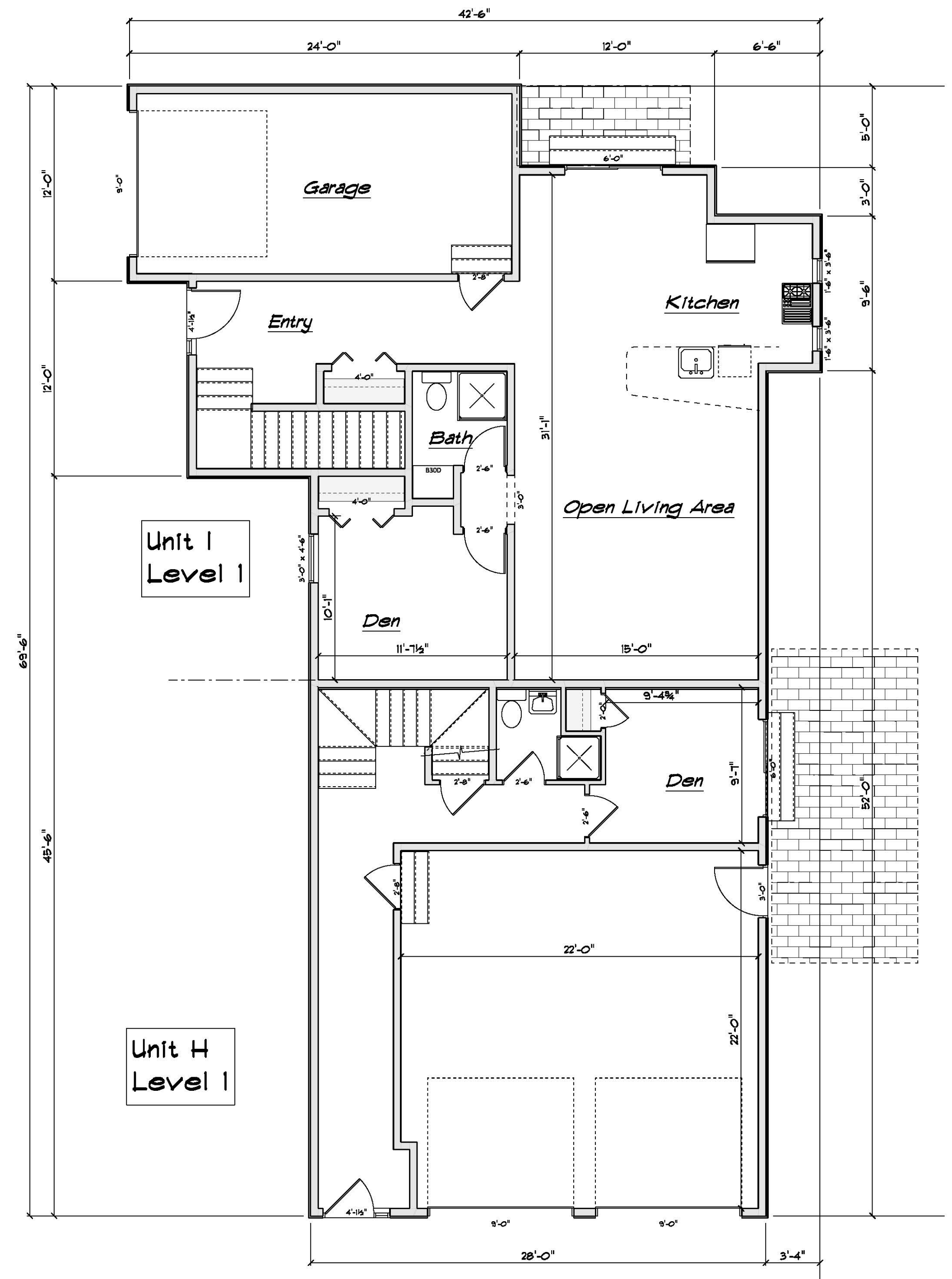


Unit G Level 1



Unit G Level 2

5-11 Washington Street
 Ipswich, MA
DDS
 Dugger Development Services
 21 Beach Road
 Ipswich, MA 01938
 978-435-2292 | info@ddsma.com
 02/25/2022



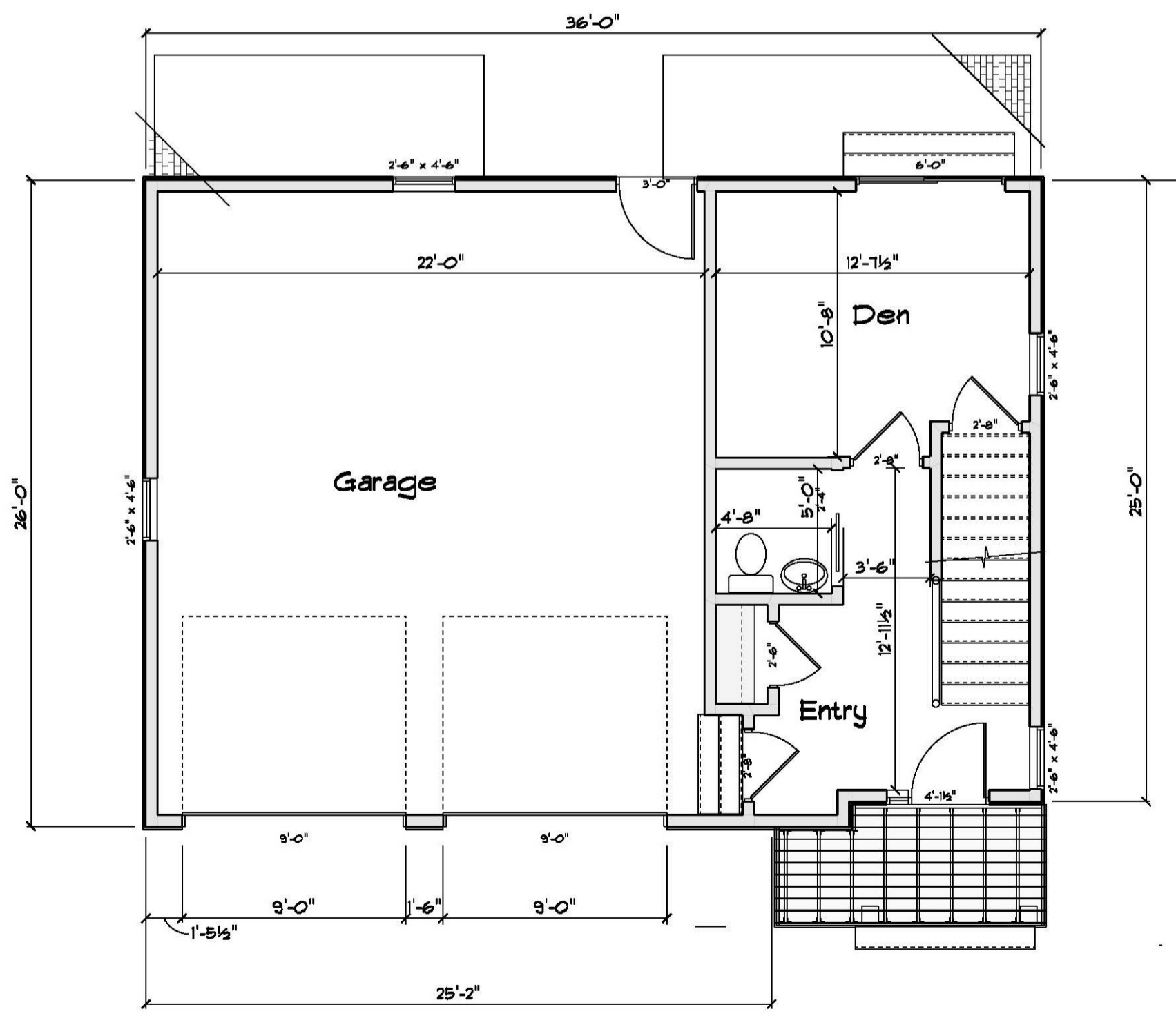
DDS 5-11 Washington Street
Ipswich, MA

Units J Levels 1, 2 & 3
Dugger Development Services

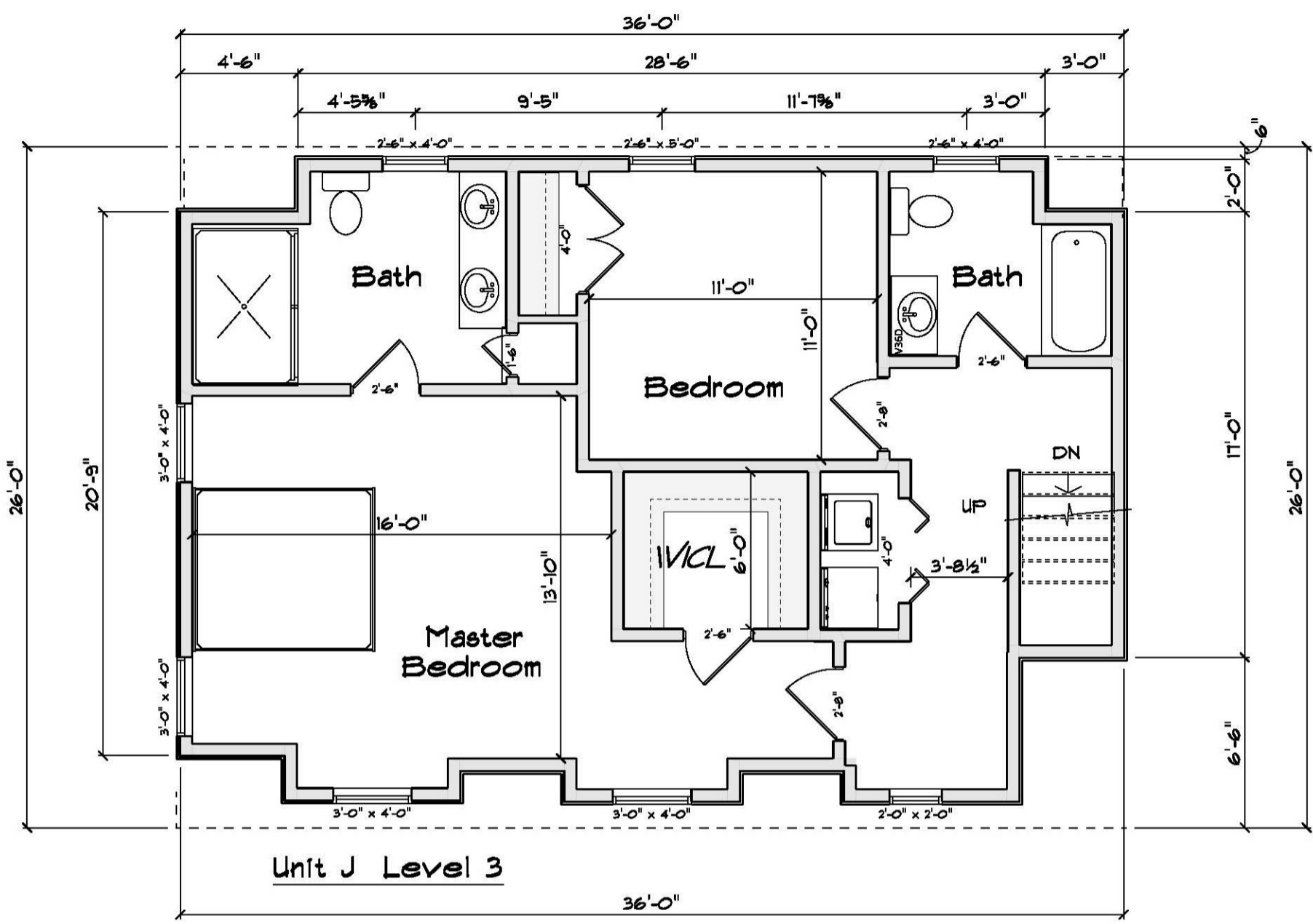
REVISED: Friday, February 25, 2022
DATE: 3/8/2022

02/25/2022

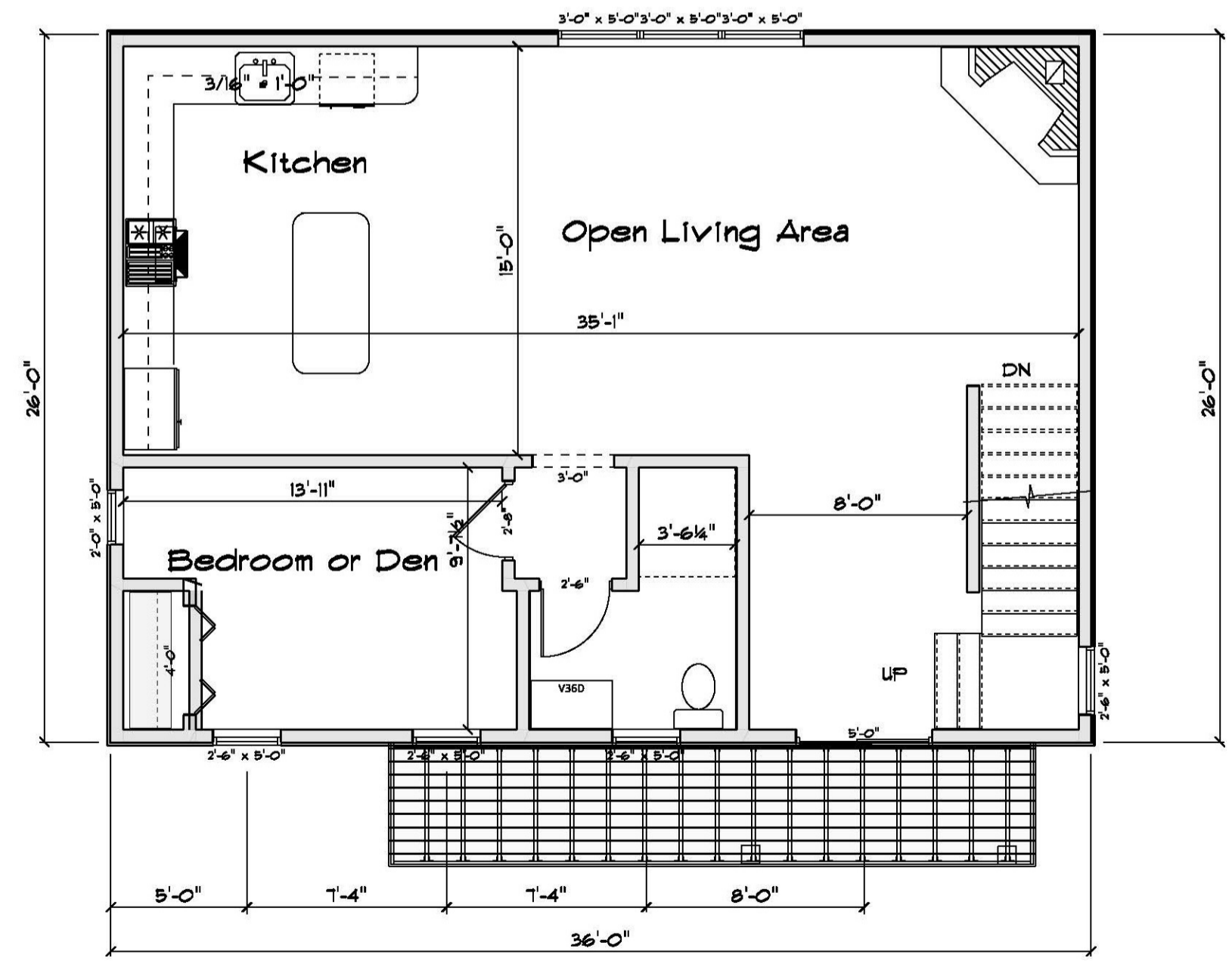
28 Beach Road
Gloucester, MA 01930



Unit J Level 1

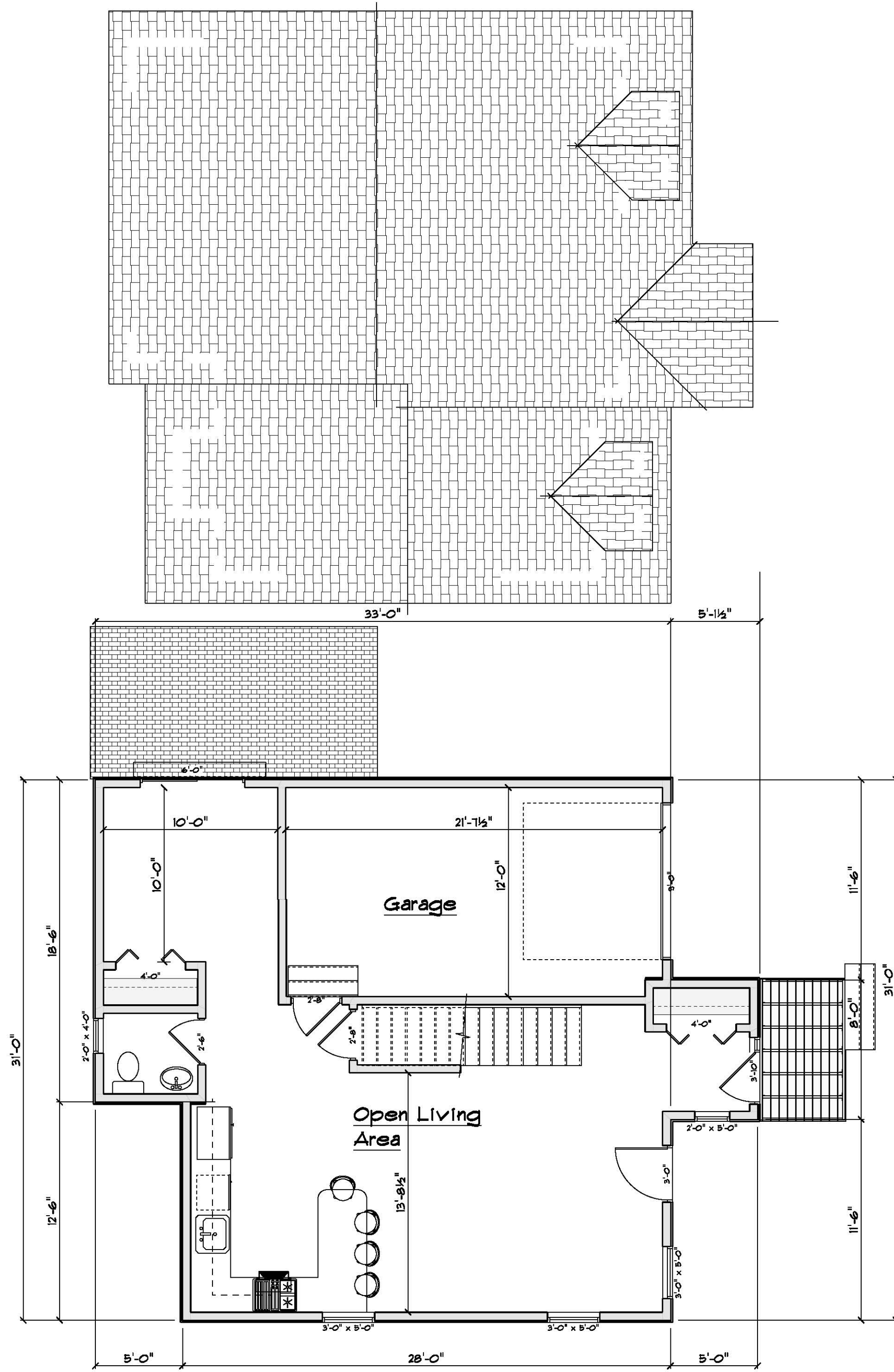


Unit J Level 3

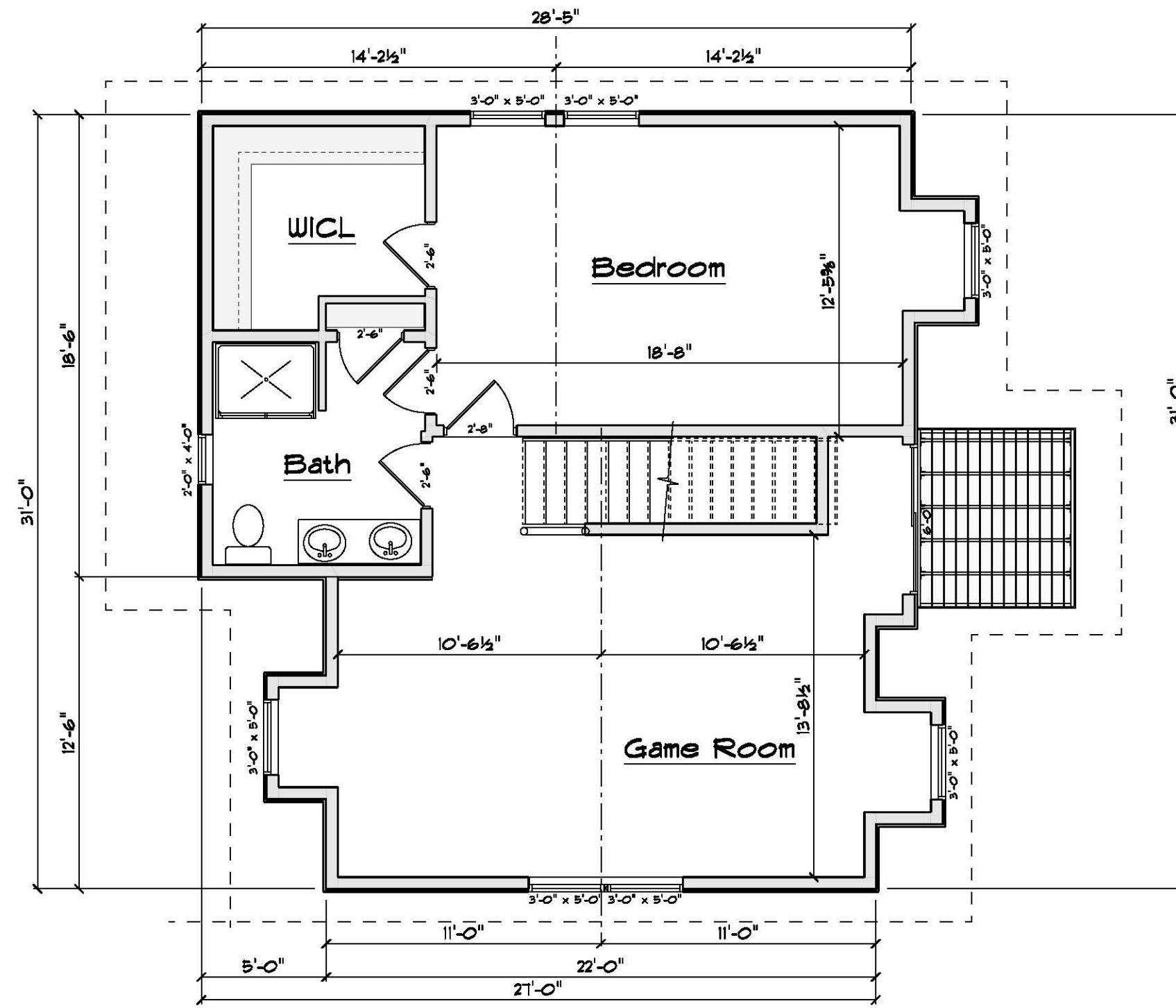


Unit J Level 2

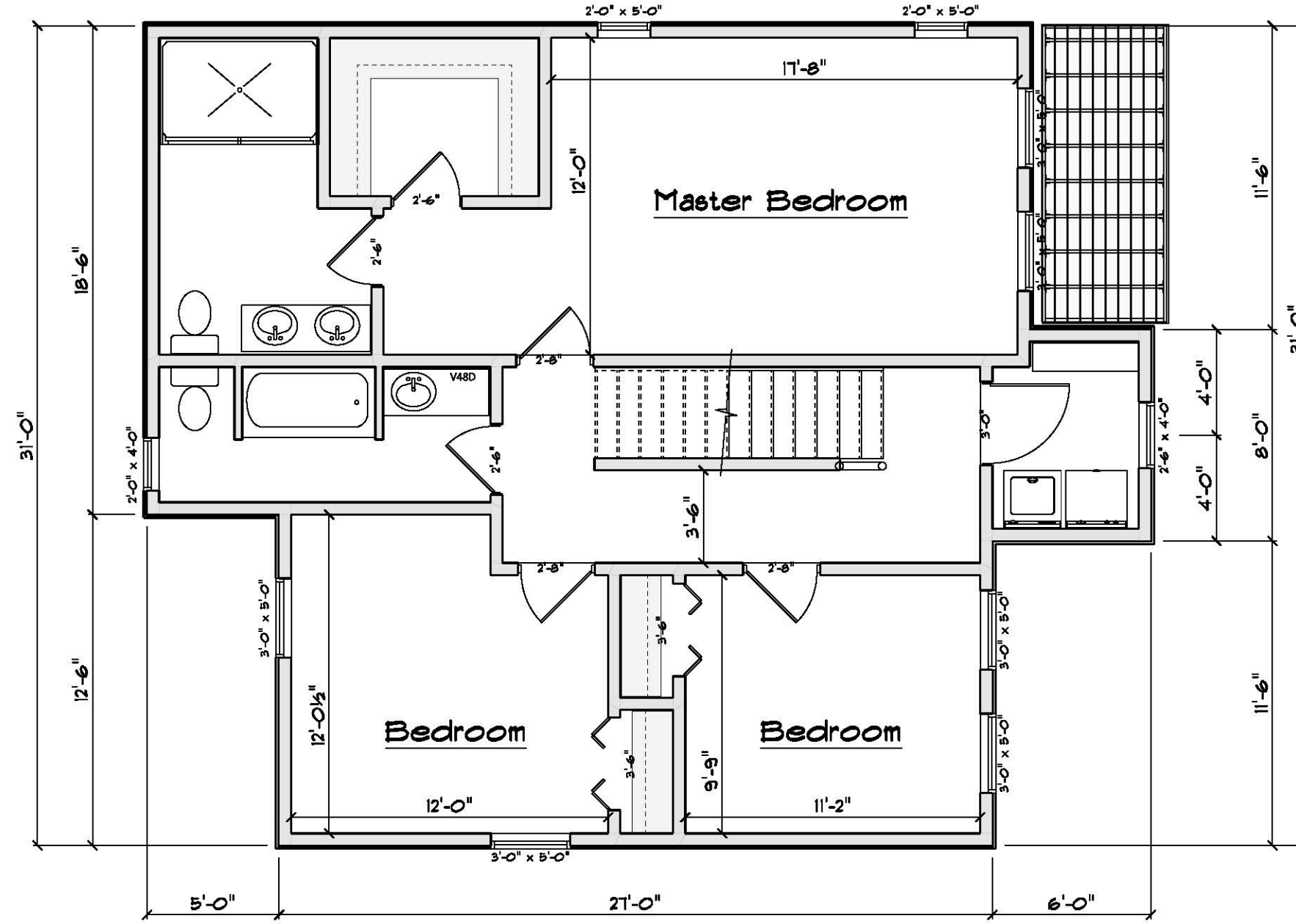
Unit K Roof



Unit K Level: 1



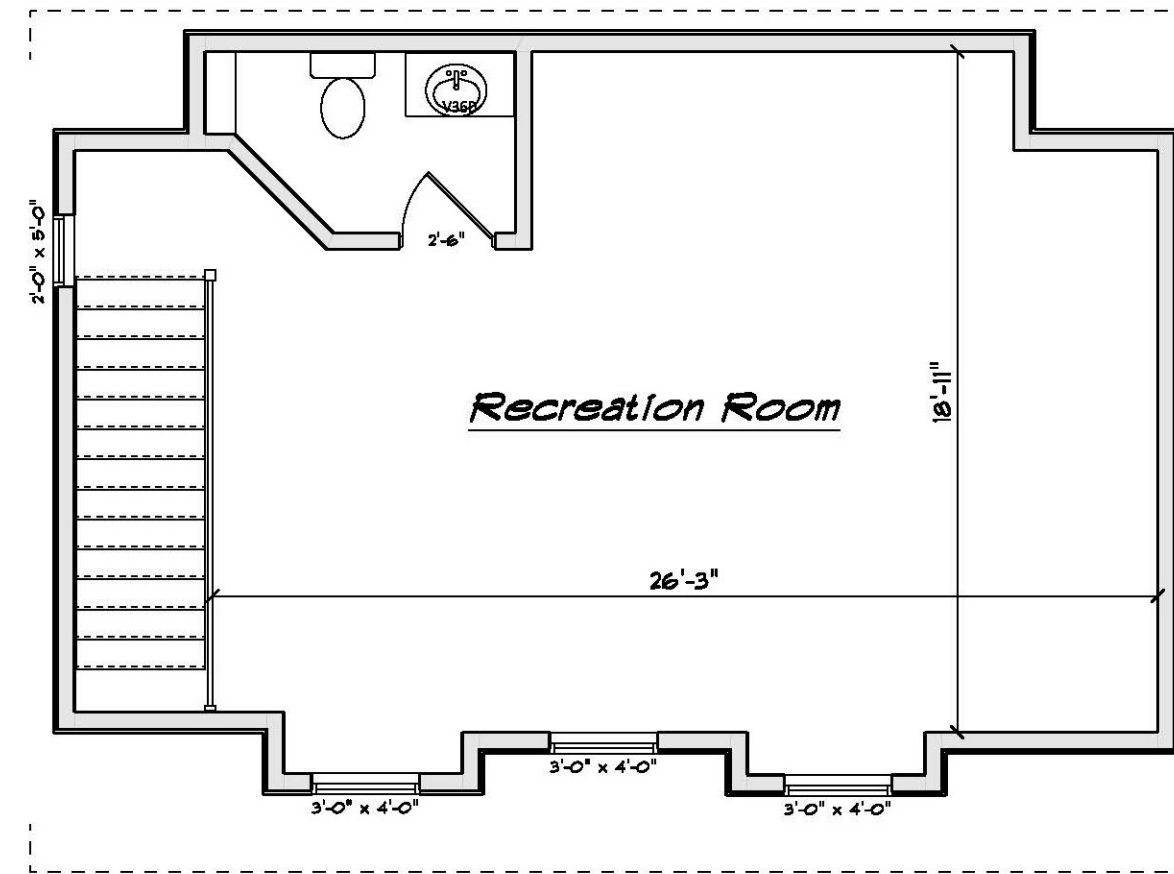
Level 3



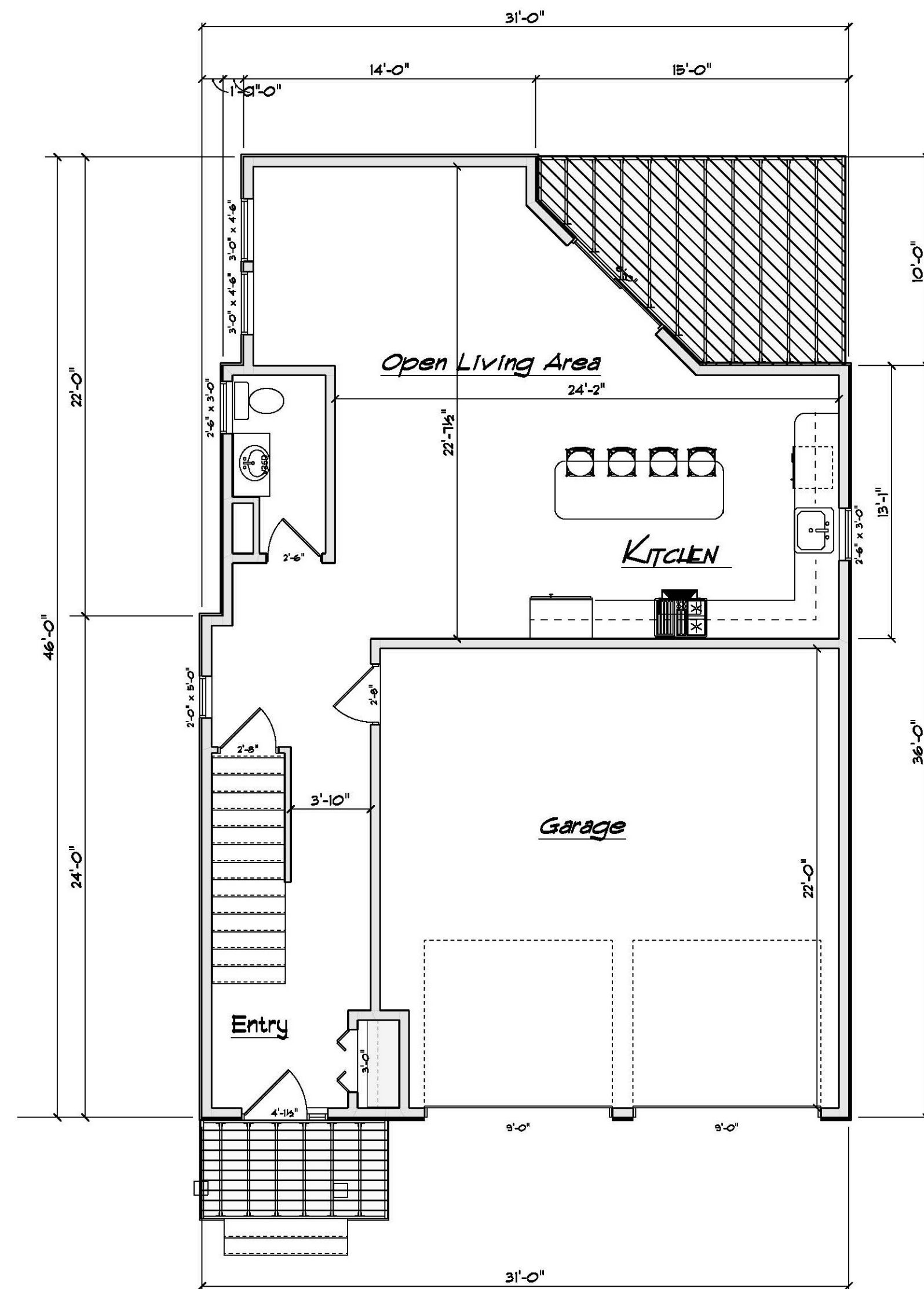
Level 2

	5-11 Washington Street Ipswich, MA
	Digger Development Services <small>Unit 18, Highway 1, #1, #2</small> <small>15 West End Gloucester, MA 01930</small>
02/25/2012	

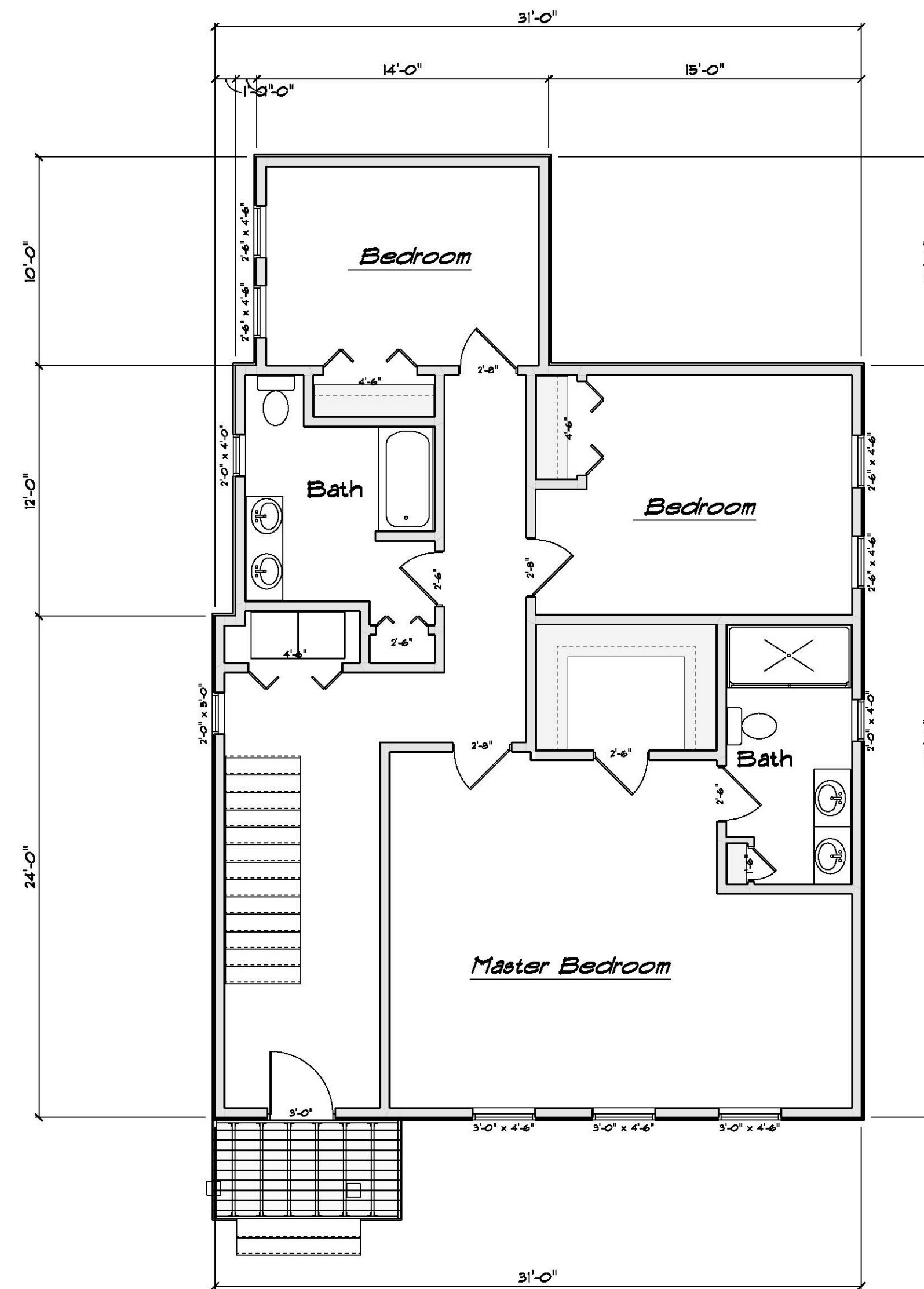
DDS
5-11 Washington Street
Ipswich, MA
Dugger Development Services
25 Beach Road
Gloucester, MA 01930
Unit Levels 1, 2 & 3
02/25/2022



Unit L Level 3



Unit L Level 1



Unit L Level 2

DDS **5-11 Washington Street**
 Ipswich, MA
 Digger Development Services
 25 South Road
 Gloucester, MA 01930
 978-438-1391 | dd@ddsma.com

Unit M Levels 1, 2, & 3

01/25/2022

