



Lighting-Power-Control

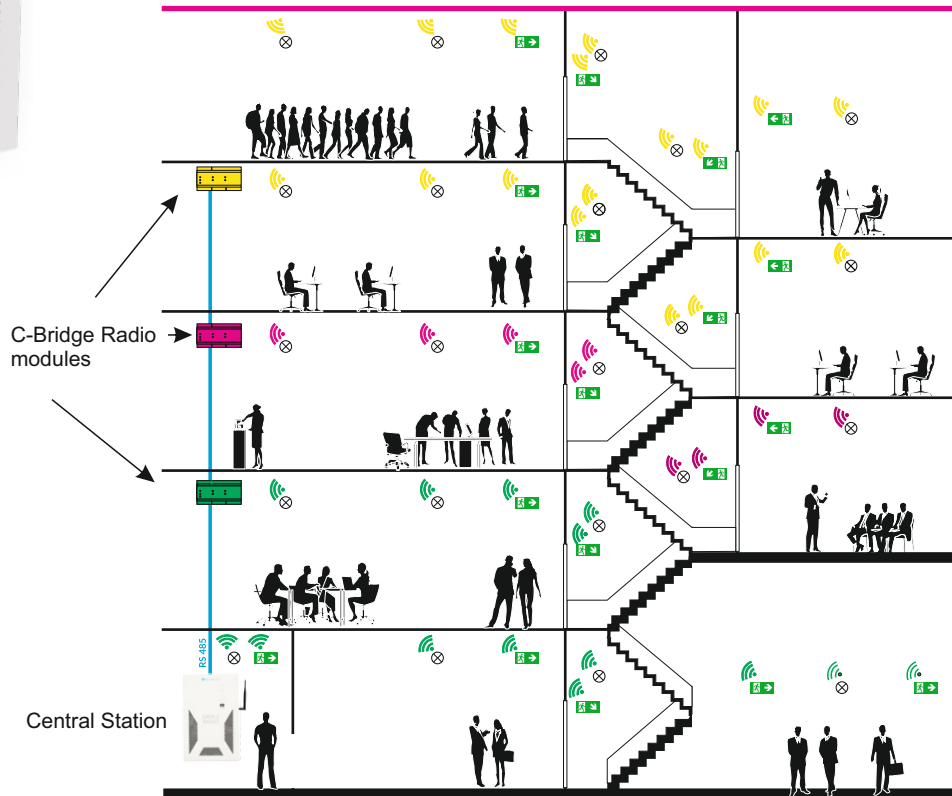
DATA 2 RADIO

Wireless Self-contained Addressable System



PARAMETERS

Maximum number of emergency fittings / C Bridge 2 Radio Module	128
Maximum number C Bridge 2 Radio Modules	8
Maximum number of emergency fittings in the system	1024



DATA 2 RADIO

Wireless Self-contained Addressable System

SYSTEM COMPONENTS



CENTRAL STATION

Multifunctional device with touch panel. Controls emergency luminaires. Possibility to download reports on the flash drive and preview the system status through the website.

Dimensions (H x W x D)	485 x 302 x 70 mm
Material	metal, RAL 9003
Protection degree	IP30
Insulation class	I

I/O MODULE



Device enabling control of emergency lighting groups, dedicated to RADIO, DATA 2 and TM-CB emergency lighting systems. IN input and OUT output models are available. The system allows for the connection of up to 16 I/O modules. IN SW, IN 24, IN 230 versions are used to control the night lighting, fire-emergency lighting groups, fire scenarios with 8 inputs each. The output module (OUT) is used to provide the system status. It has 8 potential-free outputs.

IN SW	potential-free input
IN 24	24 V voltage detection
IN 230	230 V voltage detection
OUT	potential-free output 400 V AC / 250 V DC, max. 6 A

C-BRIDGE 2 RADIO

Intermediary device for communication between the controller and DATA 2 Radio series addressable devices. The control panel is equipped with one splitter as a standard, but optionally it is possible for additional signal splitters, thus increasing the maximum possible number of luminaires to 1024.



C-BRIDGE 2 RADIO	With battery for mounting in dedicated housings.
C-BRIDGE 2 RADIO DIN	With battery for DIN rail mounting in switching stations and shafts.
C-BRIDGE RADIO BOX 2	Version built in the C-BRIDGE BOX 2.
Supply voltage	22-25 V DC

WIRING



Communication with controller	RS 485 port
Communication with ELVIS visualisation PC (www, email, MODBUS TCP)	LAN

