



Lighting-Power-Control

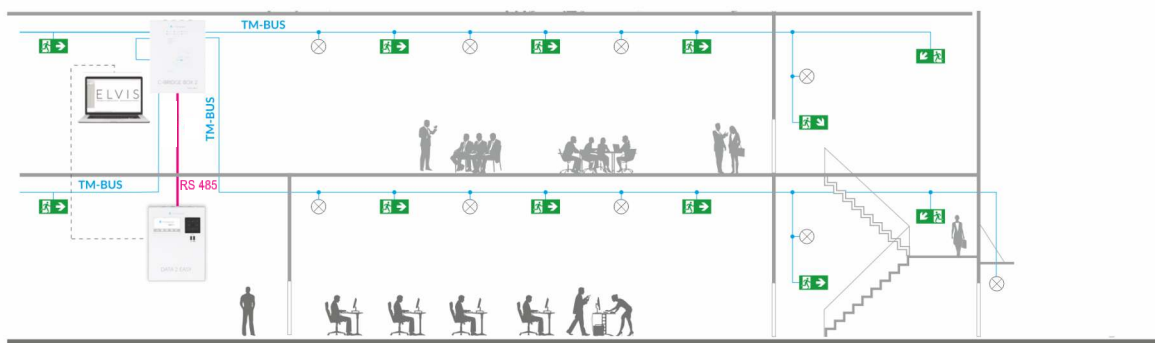
# DATA 2 EASY

## Self-contained Addressable System



### PARAMETERS

|  |     |
|--|-----|
| Maximum number of emergency fittings / channel     | 64  |
| Maximum number of communication channels           | 4   |
| Maximum number of C-Bridge 2 signal distributor    | 2   |
| Maximum number of emergency fittings in the system | 512 |



Central Station



ELVIS/BMS/SCADA



# SYSTEM COMPONENTS

## CENTRAL STATION



Multifunctional device. Controls emergency luminaires. Possibility to download reports on the flash drive and preview the system status through the website.

|                        |                     |
|------------------------|---------------------|
| Dimensions (H x W x D) | 307 x 230 x 59 mm   |
| Material               | powder coated steel |
| Protection degree      | IP20                |
| Insulation class       | I                   |

## C-BRIDGE 2



Intermediary device for communication between the controller and DATA 2 series addressable devices. The control panel is equipped with one splitter as a standard, but optionally it is possible to connect a second signal splitter, thus increasing the maximum possible number of luminaires to 4096.

|                         |  |
|-------------------------|--|
| C-BRIDGE 2 DATA 2       | With battery for mounting in dedicated housings.                     |
| C-BRIDGE 2 DATA 2 DIN   | With battery for DIN rail mounting in switching stations and shafts. |
| C-BRIDGE BOX 2          | Version built in the C-BRIDGE BOX 2.                                 |
| Supply voltage          | 22-25 V DC   |
| Communication speed     | RS-485: 19200 bit/s  |
| Bus voltage             | 15-25 V  |
| Bus communication speed | 5 kbit/s   |
| Insulation class        | III  |

## WIRING



|   |   |
|---|---|
| Communication with controller             | RS 485 port   |
| Communication with ELVIS, WWW, MODBUS TCP | LAN   |
| Communication with addressable devices    | TM-BUS 2-wire data bus (without polarity) - communication cable<br>for example: YTKSYekw 1 x 2 x 0.8 mm <sup>2</sup> or other wires complying with the parameters:<br>length: max. up to 1,000 m<br>operating temperature: -15 °C to +70 °C<br>resistance: max. 75 Ω/km<br>conductor capacity: max. 120 nF/km |

