



Lighting-Power-Control

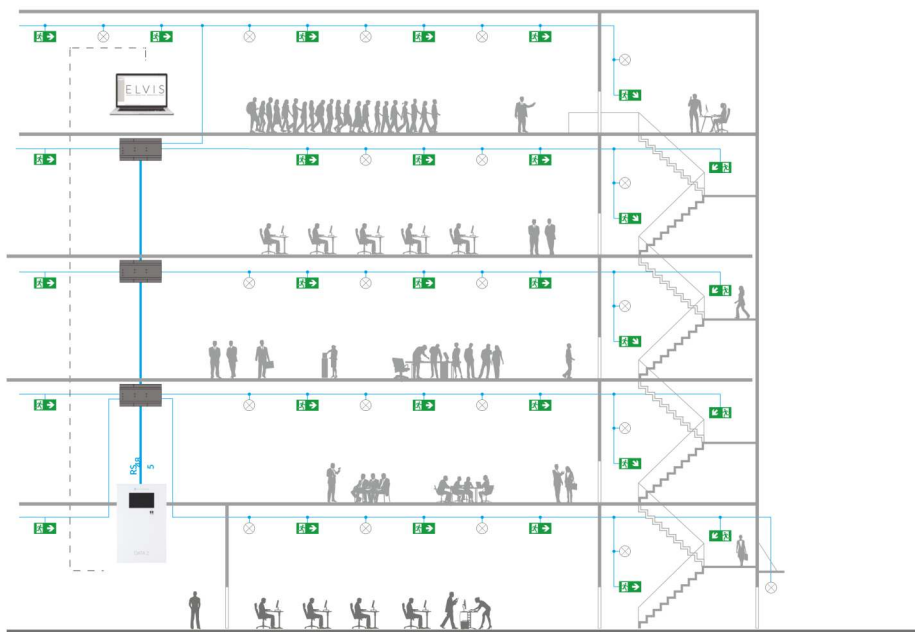
TM TECHNOLOGIE
only one way

DATA 2 Self-contained Addressable System



PARAMETERS

Maximum number of emergency fittings / channel	64
Maximum number of communication channels	4
Maximum number of C-Bridge 2 signal distributor	16
Maximum number of emergency fittings in the system	4096



Central Station



ELVIS/BMS/SCADA



TM-CB A SYSTEM COMPONENTS

CENTRAL STATION



Multifunctional device with touch panel. Controls emergency luminaires. Possibility to download reports on the flash drive and preview the system status through the website.

Dimensions (H x W x D)	485 x 302 x 70 mm
Material	blacha malowana proszkowo, RAL 9003
Protection degree	IP20
Insulation class	I

I/O MODULE



Device enabling control of emergency lighting groups, dedicated to DATA 2 and TM-CB emergency lighting systems. IN input and OUT output models are available. The DATA 2 and TM-CB system allows the connection of up to 16 I/O modules. The address of each module is set on DiP-switches on their housing. IN SW, IN 24, IN 230 version is used to control the night lighting, fire-emergency lighting groups, fire scenarios and has 8 inputs. The output module (OUT) is used to inform about the system status. It has 8 potential-free outputs.

IN SW	potential-free input
IN 24	24 V voltage detection
IN 230	230 V voltage detection
OUT	potential-free output 400 V AC/ 250 V DC, maks. 6 A

C-BRIDGE 2

Intermediary device for communication between the controller and DATA 2 series addressable devices. The control panel is equipped with one splitter as a standard, but optionally it is possible to connect a second signal splitter, thus increasing the maximum possible number of luminaires to 4096.



C-BRIDGE 2 DATA 2	With battery for mounting in dedicated housings.
C-BRIDGE 2 DATA 2 DIN	With battery for DIN rail mounting in switching stations and shafts.
C-BRIDGE BOX 2	Version built in the C-BRIDGE BOX 2.
Supply voltage	22-25 V DC
Communication speed	RS-485: 19200 bit/s
Bus voltage	15-25 V
Bus communication speed	5 kbit/s
Insulation class	III

WIRING



Communication with controller	RS 485 port
Communication with ELVIS, WWW, MODBUS TCP	LAN
Communication with addressable devices	TM-BUS 2-wire data bus (without polarity) - communication cable for example: YTKSYekw 1 x 2 x 0.8 mm ² or other wires complying with the parameters: length: max. up to 1,000 m operating temperature: -15 °C to +70 °C resistance: max. 75 Ω/km conductor capacity: max. 120 nF/km

