



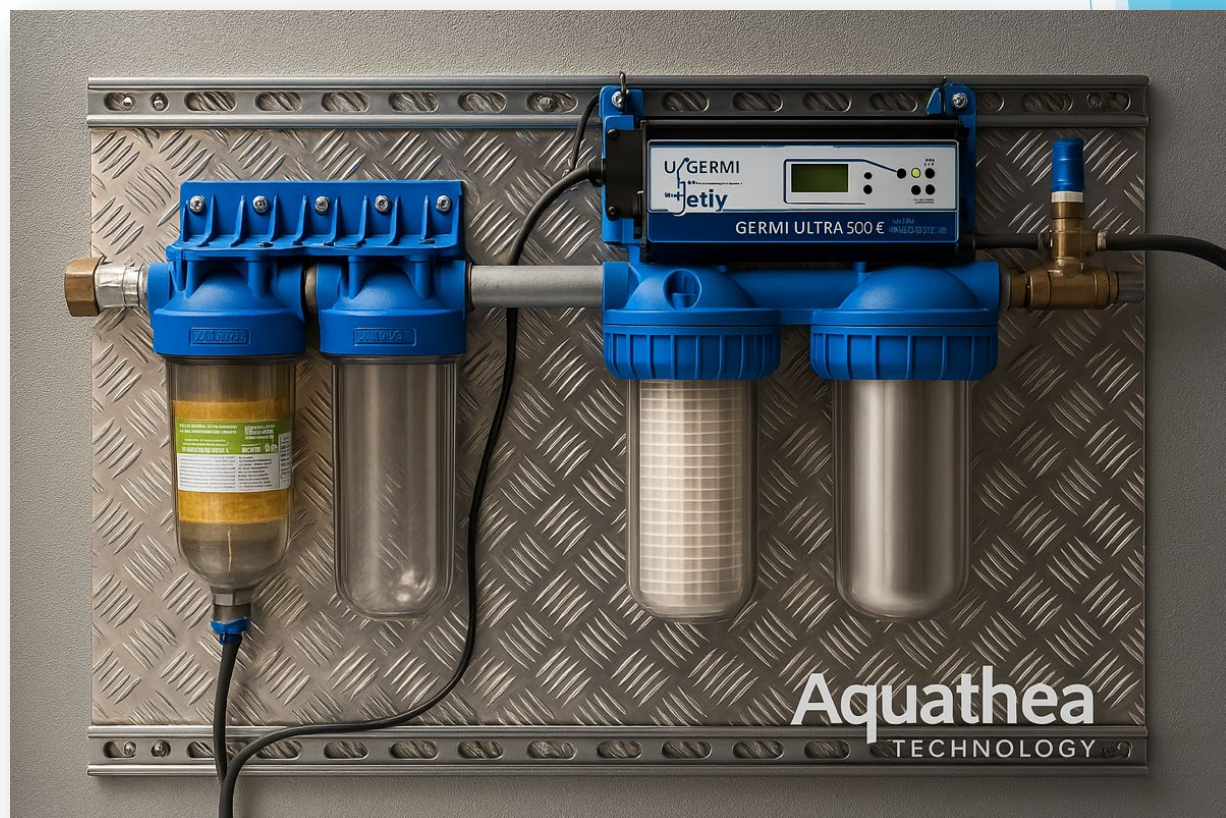
Presents
The Aquathea AQ
Next Generation Water-On-Demand Technologies



WWW.ATMOS1.COM



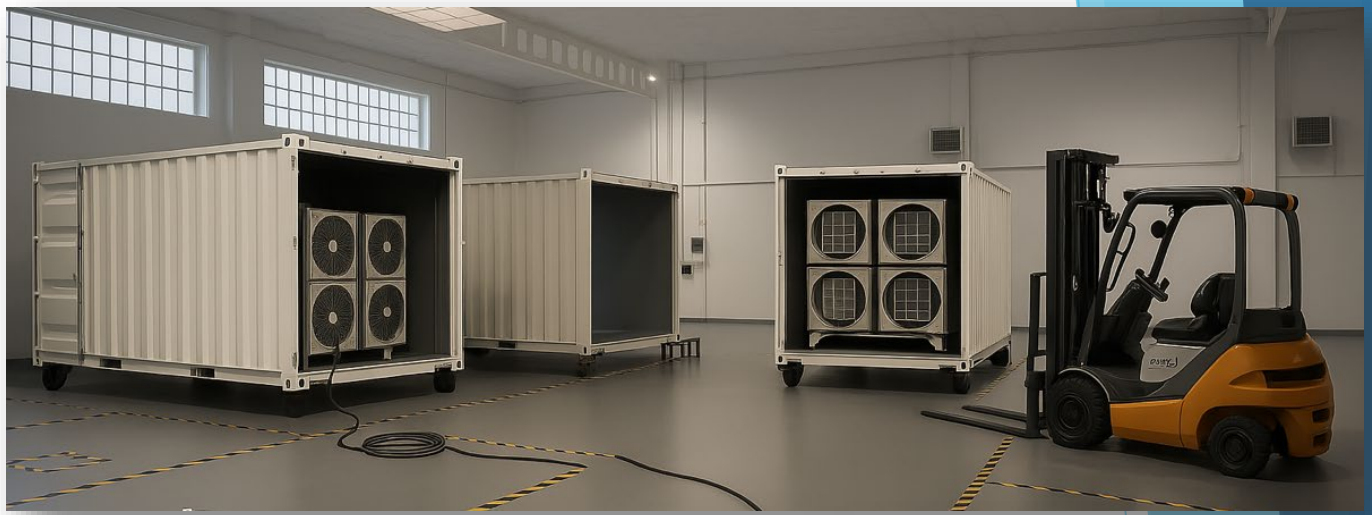
Aquathea
TECHNOLOGY



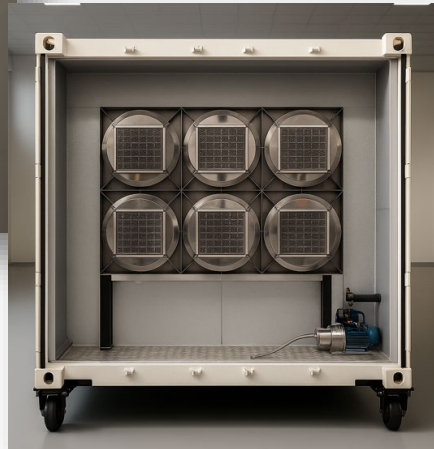
Aquathea
TECHNOLOGY



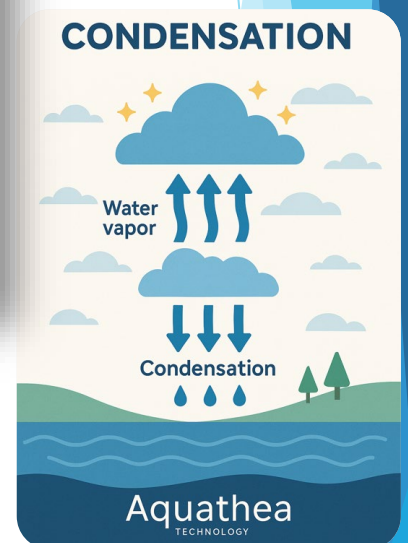
WWW.ATMOS1.COM



AquaSense is an innovative, self-contained atmospheric water production system designed to tackle the global clean water shortage crisis. Using advanced condensation technology, AquaSense extracts water from the ambient air, purifying it to produce high-quality drinking water suitable for a variety of applications, from humanitarian aid to industrial use.



The AquaSense system works by capturing moisture from the atmosphere through a process of air intake, filtration, cooling and condensation. The resulting water undergoes a multi-stage purification process, including mineralization and UV treatment, to ensure it meets strict drinking water standards.

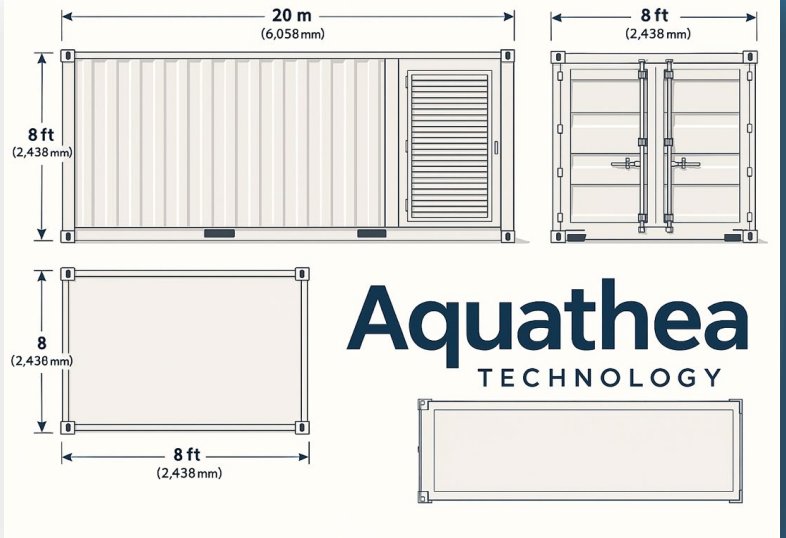


WWW.ATMOS1.COM



Why choose AquaSense?

AquaSense is at the cutting edge of atmospheric water production technology, offering a sustainable and scalable solution to the global water crisis. Its modular design, high efficiency and comprehensive certifications make it an ideal choice for communities, industries and even remote installations where access to drinking water is limited.

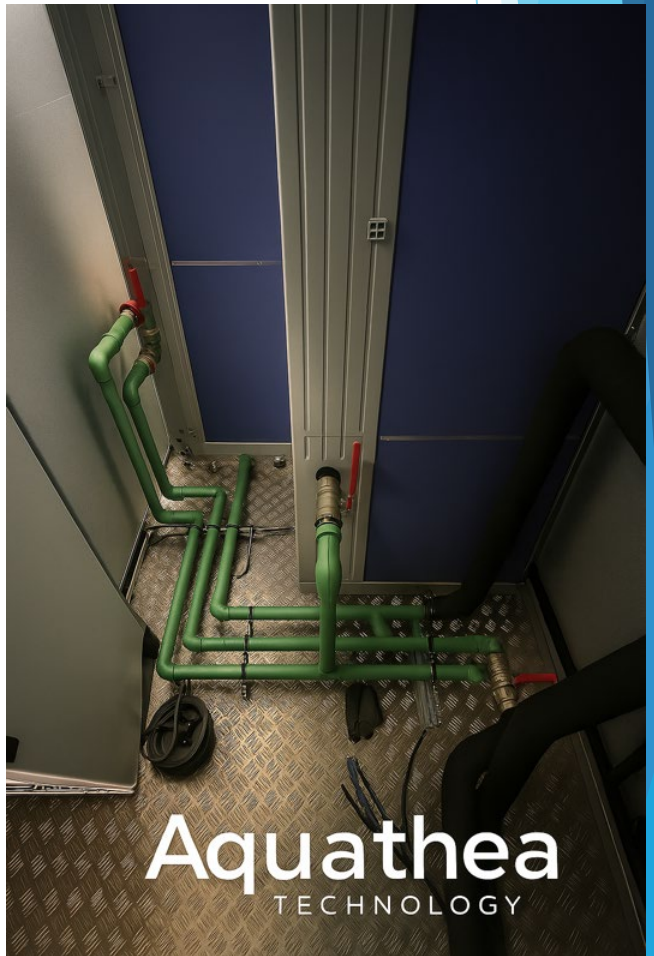


Performance and Certification:

- AquaSense is designed to deliver high performance with low energy consumption:
- Standard production capacity (AHRI standard) :
- AQ1: 1,000+ litres per day
- AQ5: 5,000+ litres per day
- AQ10: 10,000+ litres per day (modular system)

Technical Advantages:

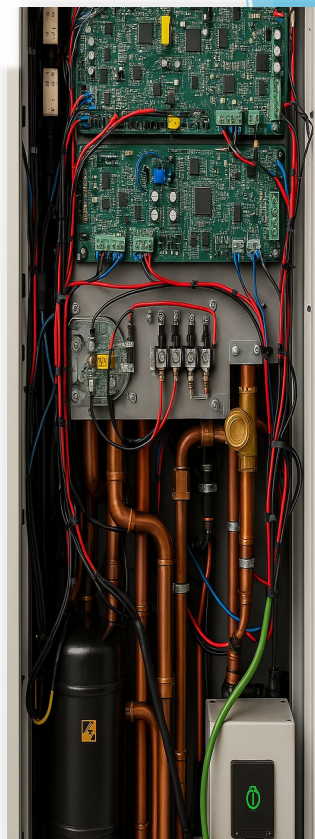
- Flexible energy options: can run on solar, gas, or electric power.
- Stand-alone functionality: plug-and-play installation with climate-adaptive intelligent management.
- Durability in extreme conditions: effective in deserts, cold zones and isolated regions.
- Remote monitoring: real-time control via satellite connection.
- Adaptable to a variety of environments, including naval, residential, industrial and humanitarian.
- Low maintenance: automated alerts and easy access to components for servicing.





Main components:

- Heat exchangers: made of stainless steel and copper, designed for efficient heat transfer.
- Condensation chamber: incorporates air treatment and water extraction technology.
- Automated control system: connected by satellite, enabling remote monitoring and adjustments.
- Water storage and treatment unit: equipped with mineralization and UV filtration systems for optimum water quality.
- Energy-efficient operation: controls, insulation and other design features minimize energy loss and provide reliable performance.



Energy Efficiency:

- - Power consumption as low as 50 W per litre produced.
- COP (coefficient of performance) greater than 6, significantly outperforming conventional industrial cooling systems.

Certifications:

- Safety and quality: IEC 60204-1 (industrial electrical safety), ISO 24510 / 46001 (water management and quality), ISO 10523 / 5667 (pH measurement and water sampling).
- Filtration performance: certified by the CNRS, Institut Pasteur and RAMS R&D for the removal of heavy metals, PFAS, pesticides, hydrocarbons and pathogens.

Technical advantages:

- Versatile energy options: can run on solar, gas, or electric power.
- Stand-alone functionality: plug-and-play installation with climate-adaptive intelligent management.
- Durability in extreme conditions: effective in deserts, cold zones and isolated regions.
- Remote monitoring: real-time control via satellite connection.
- Adaptable to a variety of environments, including marine, residential, industrial and humanitarian.
- Low maintenance: automated alerts and easy access to components for servicing.





AquaSense

ATMOS1

ATMOSPHERIC WATER PRODUCTION SYSTEM



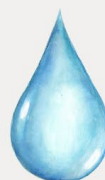
AQ1

1,000L /day



AQ5

5,000L /day



AQ10

10,000L /day

KEY SPECIFICATIONS

- 50 W per liter
- COP > 6
- Satellite Monitoring
- Plug-and-play installation

CERTIFICATIONS

- IEC60204-1
- ISO 24510 / 46001
- ISO 10523 / 5667
- FILTRATION CNRS

ENERGY OPTIONS



Solar



Gas



Wind



Electric

APPLICATIONS



Government



Hospitality



Humanitarian

Aquathea Technology



WWW.ATMOS1.COM



APPLICATIONS

- Humanitarian operations: refugee camps, emergency situations
- Infrastructure: hospitals, schools, hotels, data centers
- Remote areas: military operations, mobile clinics, rural communities
- Industry: textiles, mining, agriculture, storage

AVAILABLE OPTIONS

- All-season kit (low-temperature production)
- DHW kit (domestic hot water at 45°C)
- Energy recovery (free cooling down to -7 K)
- Integration with air conditioners (improved COP)
- Customized cladding: wood or stainless steel

DELIVERY AND COMMISSIONING CONDITIONS

- Delivery: Incoterm FCA
- Test report supplied
- Commissioning by ATMOS1 or a certified partner
- Access to the online customer portal (telephone support, documentation, monitoring)
- Warranty: 12 months (extendable to 24 months with official commissioning)
- Extensions available for up to 10 years





At ATMOS1, our commitment to quality, sustainability and innovation is reflected in every aspect of our work. We hold various international certifications that ensure our atmospheric water production systems meet the highest standards of quality, efficiency and environmental responsibility.



THE SOLAR IMPULSE EFFICIENT SOLUTION LABEL:
A NEW APPROACH TO PROTECT THE ENVIRONMENT



WWW.ATMOS1.COM



Water Treatment:

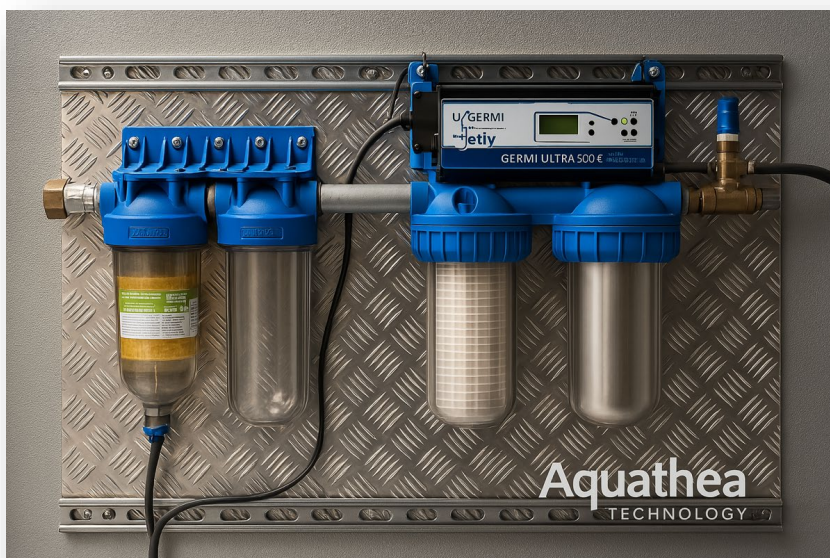
- Prefiltration at 150 ppm.
- Activated carbon filter
- Fine filtration at 50 ppm.
- UV lamp for disinfection

Certifications and Performance of Filtration Systems:

ATMOS1's Aquathea water generators are equipped with patented filtering systems developed in collaboration with renowned laboratories such as the Institut Pasteur, CNRS, LA FSBE, RAMS Institut de R&D en Sante au Travail. These filters meet and exceed the highest standards.

Guaranteed performance:

Heavy Metals:	PFAS (polyfluoroalkylated substances):	Other contaminants:
<ul style="list-style-type: none">• Lead: 99.99• Manganese: 98.99• Copper: 99• Cadmium: 99.5• Iron: 100• Radium: 99• Nickel: 98• Uranium: 99• Ammonium: 98	<ul style="list-style-type: none">- High elimination rate	<ul style="list-style-type: none">• Pesticide residues: 98• Organic solvents• Chlorinated hydrocarbons• Volatile organic compounds• Bisphenol: 99• E. coli• Medicinal waste

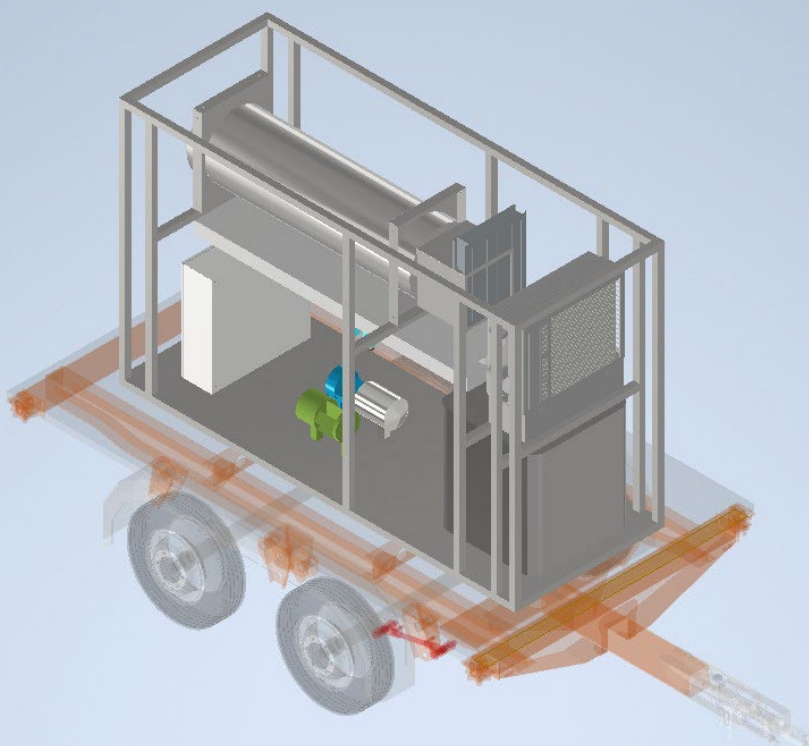
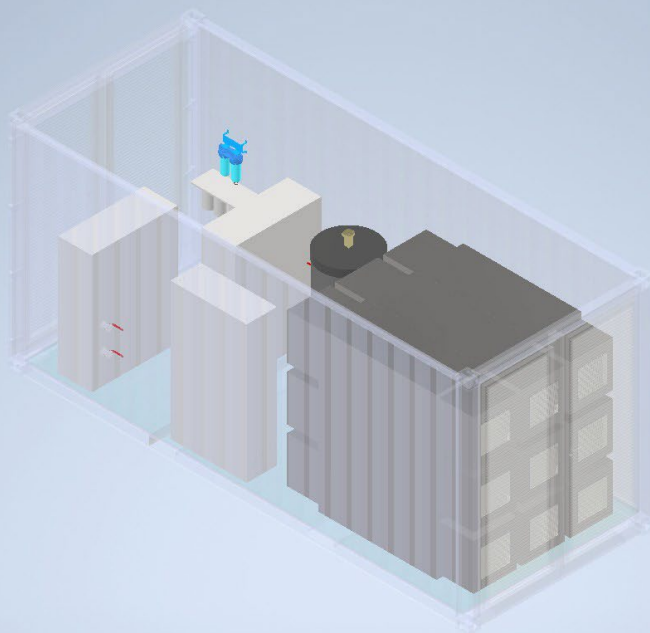




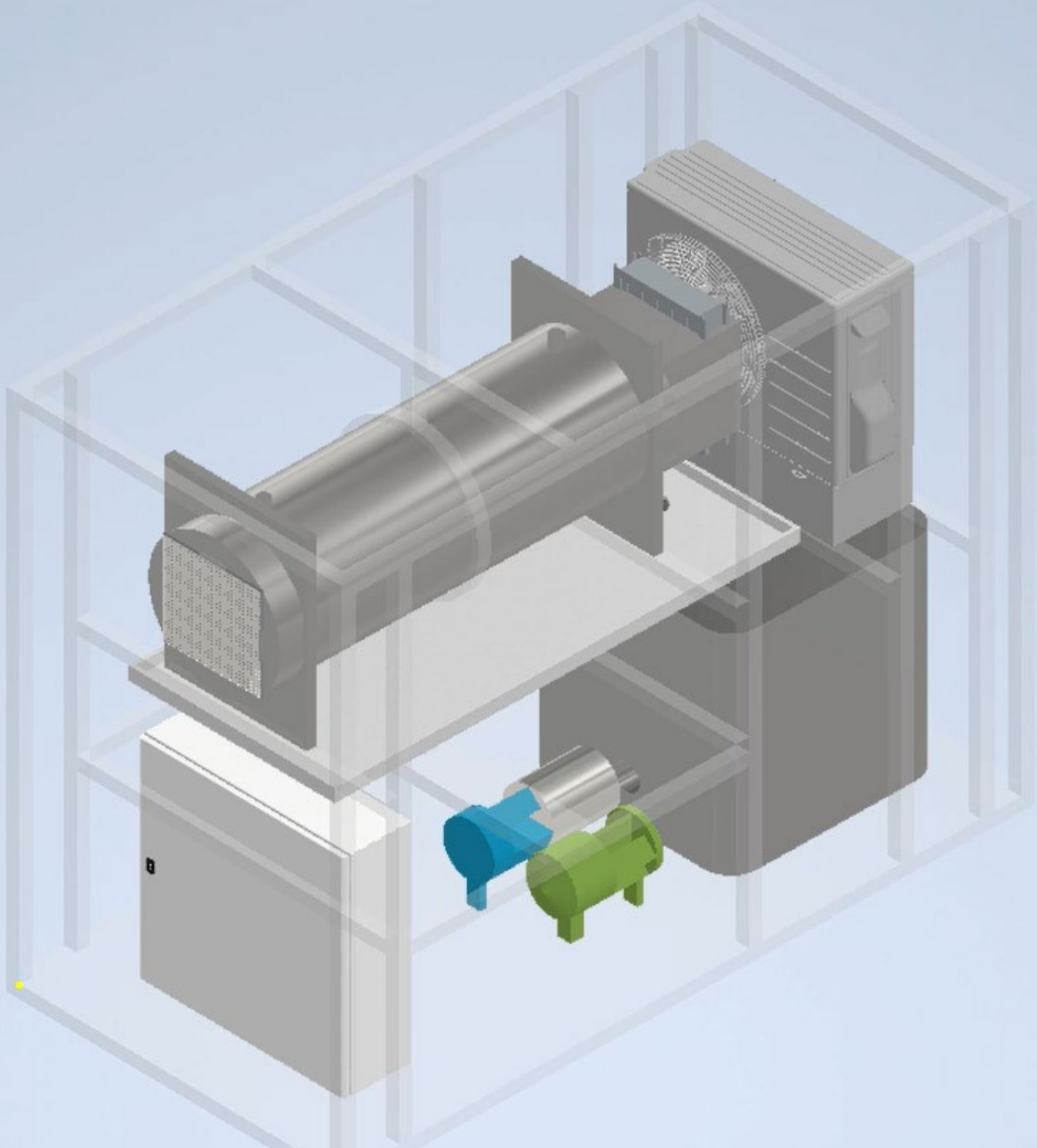
Specifications	AQ1	AQ5	AQ10
Water Production (Liters/Day)	1000L	5000L	10,000L
Air Filter	G4/Electrostatic Anti-Bacterial	G4/Electrostatic Anti-Bacterial	G4/Electrostatic Anti-Bacterial
Water Filtration System	Patented UV Lamp	Patented UV Lamp	Patented UV Lamp
Dimensions W x D x H (cm)	330 x 120 x 200	605 x 238 x 258	605 x 238 x 258
Net Weight (kg)	825 kg	6,900 kg	8,800 kg
Power Supply	480	480	480
Consumption (kWh)	1 - 4.4 kWh	3 - 21 kWh	4 - 28 kWh
Refrigerant	R32	R32	R32
Evaporator Coil	Stainless Steel	Stainless Steel	Stainless Steel
Evaporator Fan (Nm3/h)	1,000 - 3,000	1,500 - 21,800	2,500 - 39,600

Humidité (%)	14°C	16°C	18°C	20°C	22°C	24°C	26°C	28°C	30°C	32°C	34°C	36°C	38°C	40°C	42°C	44°C
15	85,9	97,1	109,4	123,1	138,3	155,1	173,6	193,9	216,3	240,9	267,9	297,3	329,6	364,8	403,1	444,8
20	114,6	129,4	145,9	164,2	184,4	206,8	231,4	258,6	288,4	321,2	357,1	396,5	439,4	486,3	537,5	593,1
25	143,2	161,8	182,4	205,2	230,5	258,5	289,3	323,2	360,5	401,5	446,4	495,6	549,3	607,9	671,8	741,4
30	171,9	194,1	218,9	246,3	276,6	310,1	347,1	387,9	432,6	481,8	535,7	594,7	659,2	729,5	806,2	889,7
35	200,5	226,5	255,3	287,3	322,7	361,8	405	452,5	504,8	562,1	625	693,8	769	851,1	940,6	1037,9
40	229,1	258,8	291,8	328,4	368,8	413,5	462,8	517,2	576,9	642,4	714,3	792,9	878,9	972,7	1074,9	1186,2
45	257,8	291,2	328,3	369,4	414,9	465,2	520,7	581,8	649	722,7	803,6	892	988,7	1094,3	1209,3	1334,5
50	286,4	323,5	364,8	410,5	461	516,9	578,6	646,4	721,1	803	892,8	991,2	1098,6	1215,9	1343,7	1482,8
55	315,1	355,9	401,2	451,5	507,1	568,6	636,4	711,1	793,2	883,3	982,1	1090,3	1208,5	1337,5	1478	1631,1
60	343,7	388,2	437,7	492,5	553,2	620,3	694,3	775,7	865,3	963,6	1071,4	1189,4	1318,3	1459	1612,4	1663,2
65	372,3	420,6	474,2	533,6	599,3	672	752,1	840,4	937,4	1043,9	1160,7	1288,5	1428,2	1580,6	1663,2	1663,2
70	401	452,9	510,7	574,6	645,4	723,7	810	905	1009,5	1124,2	1250	1387,6	1538	1663,2	1663,2	1663,2
75	429,6	485,3	547,1	615,7	691,5	775,4	867,8	969,7	1081,6	1204,5	1339,3	1486,7	1647,9	1663,2	1663,2	1663,2
80	458,3	517,7	583,6	656,7	737,7	827,1	925,7	1034,3	1153,7	1284,8	1428,5	1585,8	1663,2	1663,2	1663,2	1663,2
85	486,9	550	620,1	697,8	783,8	878,8	983,5	1099	1225,8	1365,1	1517,8	1663,2	1663,2	1663,2	1663,2	1663,2
90	515,6	582,4	656,6	738,8	829,9	930,4	1041,4	1163,6	1297,9	1445,4	1607,1	1663,2	1663,2	1663,2	1663,2	1663,2
95	544,2	614,7	693	779,9	876	982,1	1099,3	1228,2	1370,1	1525,7	1663,2	1663,2	1663,2	1663,2	1663,2	1663,2





WWW.ATMOS1.COM



WWW.ATMOS1.COM



THE LEADER IN WATER-ON-DEMAND TECHNOLOGY



NGOs, institutions, hotels, oil, mining, farming and other industries, contact ATMOS1 to learn more about the world's most efficient water-on-demand solutions for all your water needs.

Sales@ATMOS1.com

www.ATMOS1.com

877-4-ATMOS1



WWW.ATMOS1.COM