

RDI Systems

2915 Tennessee Avenue North, Parsons, TN 38363
(731) 847-6361 • (800) 826-7036*

REFRIGERATING UNIT - FREEZER

MODEL	DF198T3	2.0	HP
VOLTS	208-230	PH 1	CYCLES 60
REFRIGERANT	R448A	36	OZ. BTUH 6,380
TOTAL LOAD	16.9	AMPS	TOTAL HEAT REJECTED 13,060 BTUH
MIN. CIRCUIT AMPACITY	20.4		EVAP. FAN 1.0 AMPS EA.
MAX. EXTERNAL FUSE SIZE	30		EVAP. FAN 38W HP
COMP. RLA	13.9		DEFROST 4.3 AMPS
COMP. LRA	75.0		COND. FAN 1.0 AMPS
LOW SIDE DESIGN PRESS.	230	PSIG	COND. FAN 38W HP
HIGH SIDE DESIGN PRESS.	475	PSIG	WEIGHT 300 LBS.
AWEF	2.07		

NOTE:
SYSTEM IS SUPPLIED WITH A HOT GAS CONDENSATE PAN. A CONDENSATE DRAIN LINE IS NOT REQUIRED.

NOTE:
18" CLEARANCE REQUIRED ON ALL SIDES FOR PROPER OPERATION OF POLAR PAK SYSTEMS.

ITEMS PROVIDED INCLUDE:

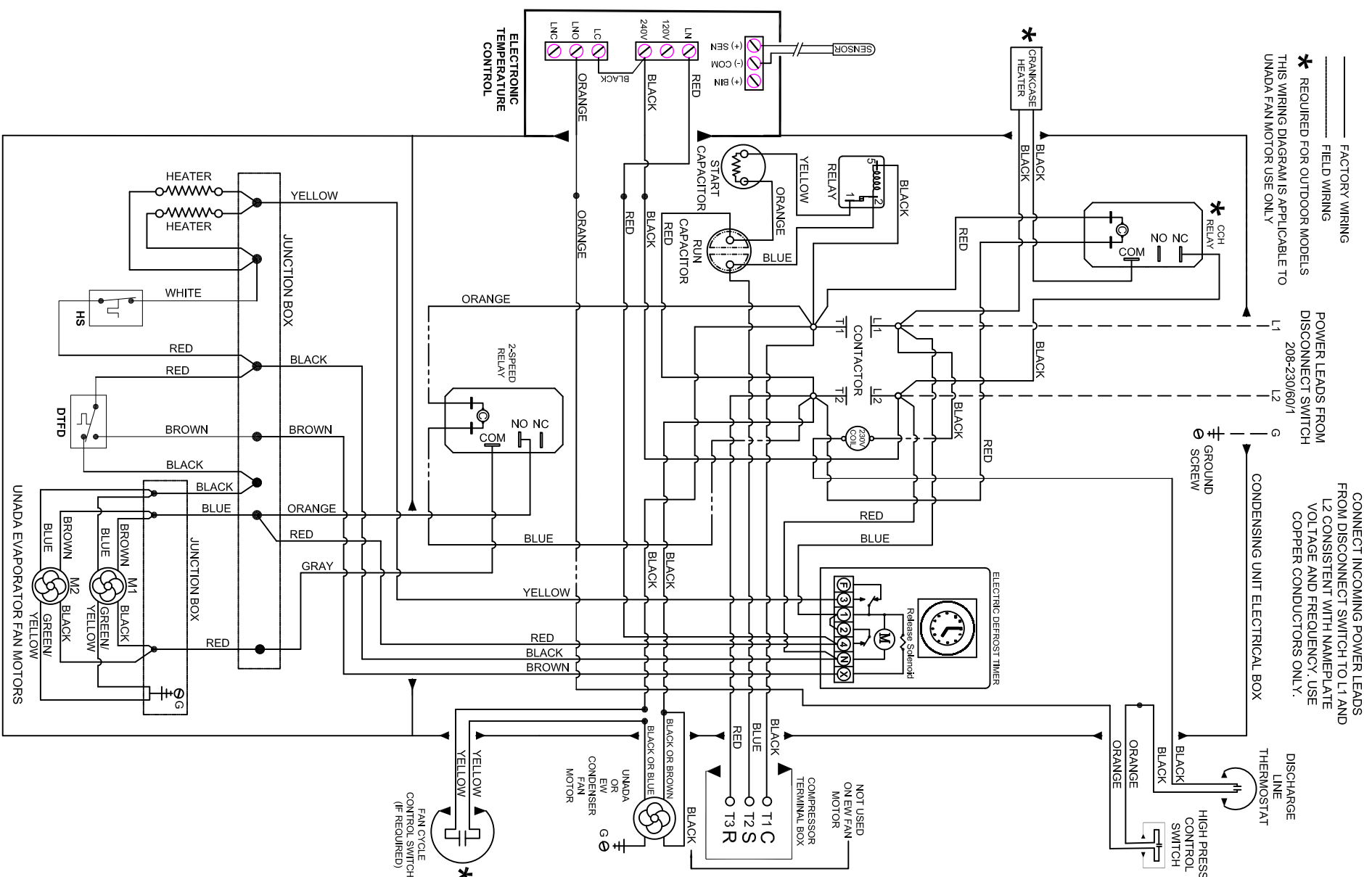
1. Liquid Line Filter/Driers
2. Electronic Temp Control (Installed)
3. Expansion Valve (Installed)
4. Scroll Compressor-Copeland
5. High Pressure Switch
6. EC Fan Motors-2 Speed



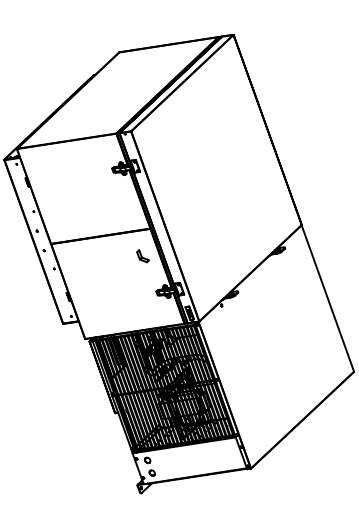
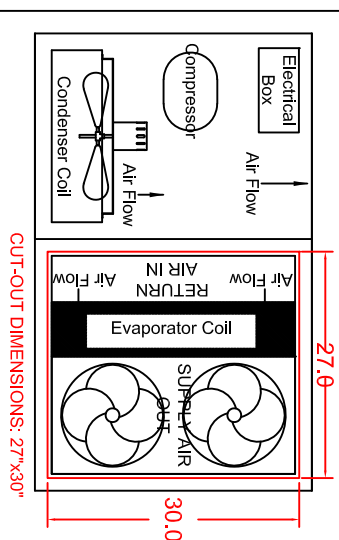
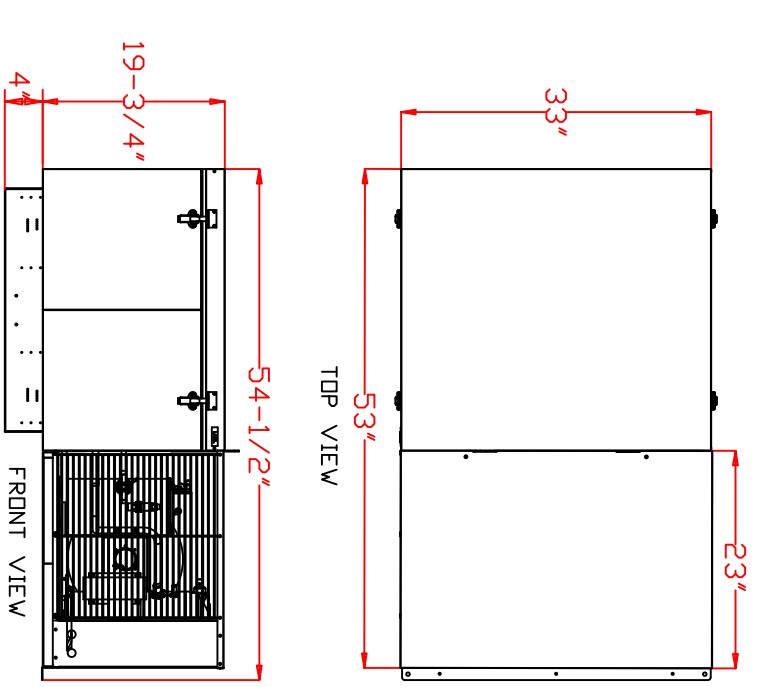
THIS DRAWING/PRINT IS THE PROPERTY OF RDI SYSTEMS AND IS TO BE KEPT IN THE ORIGINAL FILED IN THE DRAWING ROOM. ANY REVISIONS MUST BE APPROVED AND SIGNED BY THE ORIGINAL DESIGNER AND DATE.

SIGNED APPROVED PRINT MUST BE RECD. BY FAB. APPROVED AS DRAWN APPROVED AS NOTED REVIS AND RESUBMIT

SIGNED _____ DATE _____



R448A POLAR PAK FREEZER WIRING DIAGRAM 208-230/1/60



DATE	No.	DESCRIPTION OF CHANGE	AUTH	BY
06.09.20	3	ADDED AWEF		DW
DF198T3 (208-230/1/60)				
SCALE	NONE	DEALER	DRAWN BY: DW	REMOVED
DATE	01.14.2020			
RDI Systems				
DRAWING NUMBER: DF198T3				