

FACTORY WIRING  
FIELD WIRING

**\* REQUIRED FOR OUTDOOR MODELS**  
THIS WIRING DIAGRAM IS APPLICABLE TO UNADA/EV FAN MOTOR USE ONLY

CONNECT INCOMING POWER LEADS FROM DISCONNECT SWITCH TO L1 AND L2  
DISCONNECT SWITCH  
208-230/1/60/1

POWER LEADS FROM DISCONNECT SWITCH  
FREQUENCY: USE COPPER CONDUCTORS ONLY.

CONDENSING UNIT ELECTRICAL BOX  
THERMOSTAT LINE  
DISCHARGE LINE

GROUND SCREW

HIGH PRESS CONTROL SWITCH

COM CRANKCASE HEATER

RELAY

TO LDA USB CONNECTOR (WHEN REQ'D)

SENSORS

START CAPACITOR

RUN CAPACITOR

2-SPEED RELAY

ELECTRIC DEFROST TIMER

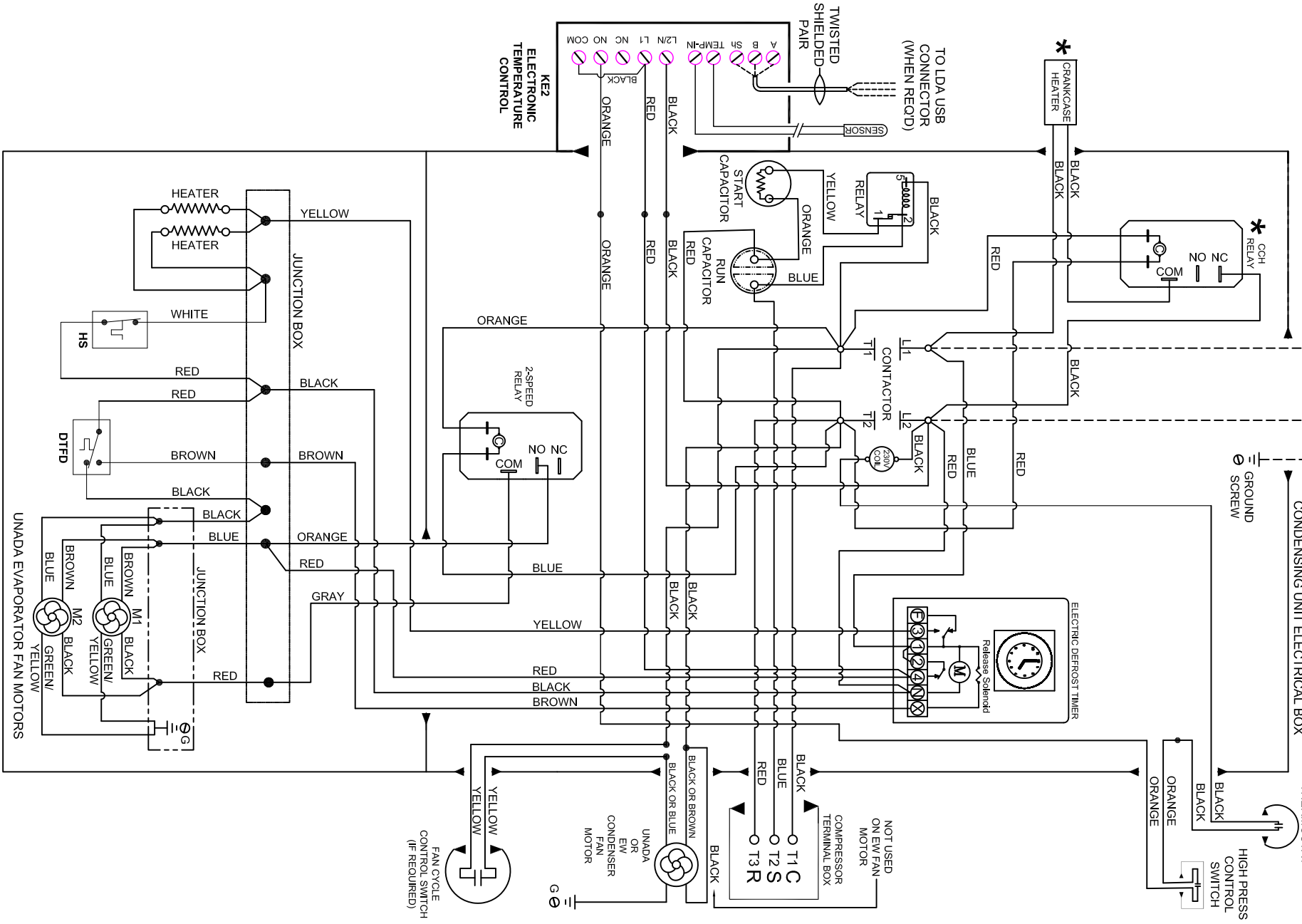
UNADA OR EV CONDENSER FAN MOTOR

UNADA EVAPORATOR FAN MOTORS

JUNCTION BOX

JUNCTION BOX

EVAPORATOR COMPARTMENT



R448A POLAR PAK FREEZER WIRING DIAGRAM 208-230/1/60

**NOTE:**  
18" CLEARANCE REQUIRED ON ALL SIDES FOR PROPER OPERATION OF POLAR PAK REFRIGERATION SYSTEMS.

- ITEMS PROVIDED INCLUDE:
1. Liquid Line Filter/Drier
  2. Electronic Temp Control (Installed)
  3. Expansion Valve (Installed)
  4. Scroll Compressor-Copeland
  5. High Pressure Switch
  6. Discharge Line Thermostat
  7. EC Fan Motors-230/1/60
  8. Crankcase Heater (Off Cycle Only)
  9. Fan Cycle Control
  10. Defrost Heaters-230/1/60
  11. Electric Defrost Timer
  12. Oversized Receiver Tank

CONFORMS TO  
ANSI/UL STD 47

CERTIFIED TO  
CAN/CSA STD  
C22.2 NO.120-04

Intertek  
40807

THIS DRAWING/  
FILE IS THE  
FINAL AND IS  
STAMPED AND  
SIGNED IN THE  
DATA BASE. ANY  
REVISIONS  
OR ADDITIONS  
MUST BE BY  
THE DESIGNER  
OR ENGINEER  
AND CHANGED IN  
DATA BASE.

SIGNED APPROVED PRINT  
MUST BE RECD. B/A FAB.

APPROVED AS DRAWN  
 APPROVED AS NOTED  
 REVISE AND RESUBMIT

SIGNED \_\_\_\_\_ DATE \_\_\_\_\_

# RDI Systems

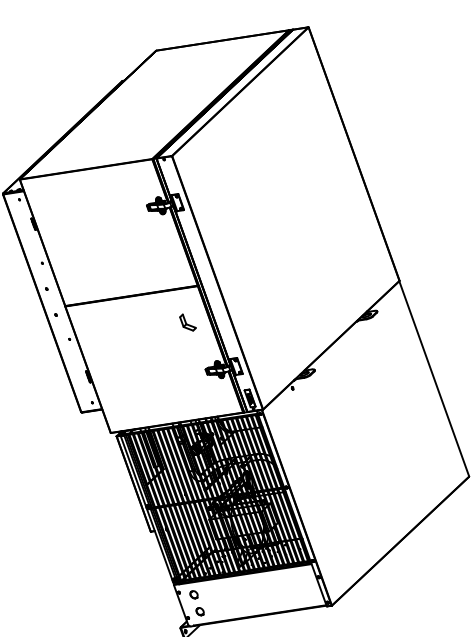
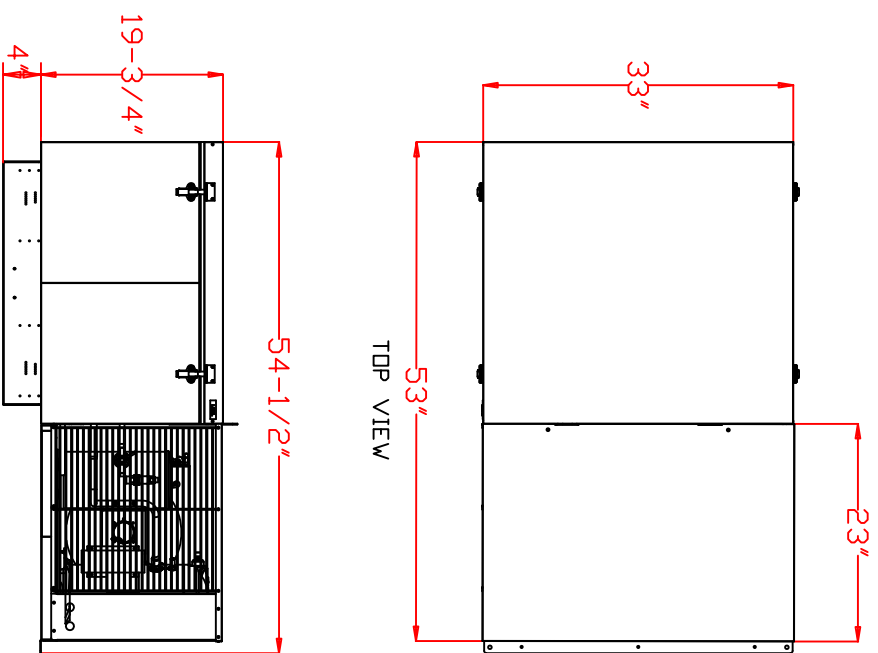
2915 Tennessee Avenue North, Parsons, TN 38363  
(731) 847-6361\*(800) 826-7036\*  
A Weibull Brand

MODEL: DF198T30A  
REFRIGERANT: R448A  
POWER SUPPLY: 208-230/1/60  
TOTAL LOAD AMPS: 15.7  
MAX. EXTERNAL FUSE SIZE: 30A  
COMPRESSOR RLA: 13.9  
CONDENSER FAN AMPS: 0.6  
EVAP FAN AMPS: 0.6  
TOTAL EVAP FAN AMPS: 1.2  
DEFROST HEATER AMPS: 4.3  
LOW SIDE DESIGN PRESS: 230 PSIG  
HIGH SIDE DESIGN PRESS: 475 PSIG  
WEIGHT: 300 LBS.  
TOTAL HEAT REJECTED: 12,185 BTUH  
AWEF: 3.19

HP: 2  
REFRIGERANT CHARGE: 104 OZ.  
PH: 1 HZ: 60  
MINIMUM CIRCUIT AMPACITY: 19.2A  
COMPRESSOR LRA: 75.0  
CONDENSER FAN HP: 1/20  
EVAP FAN HP: 1/20  
DEF HEATER WATTS: 989

BTUH CAPACITY @ -20°F SST  
OUTDOOR AMBIENT

90°F	95°F	100°F	105°F	110°F
6,380	6,130	5,870	5,610	5,350



DATE	No.	DESCRIPTION OF CHANGE	AUTH	BY
DF198T30A (208-230/1/60)				
SCALE	NONE	DESIGNER		
DATE	04.29.2022	REVISION		
DRAWING NUMBER		DRAWING QUOTE NO.		
DF198T30A				

**RDI Systems**

2915 Tennessee Avenue North, Parsons, TN 38363  
(731) 847-6361\*(800) 826-7036\*  
A Weibull Brand