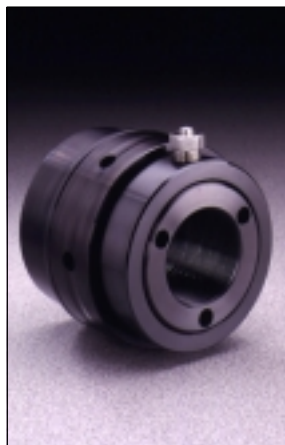
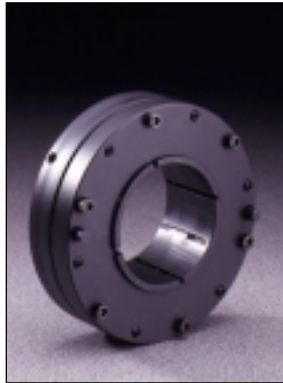
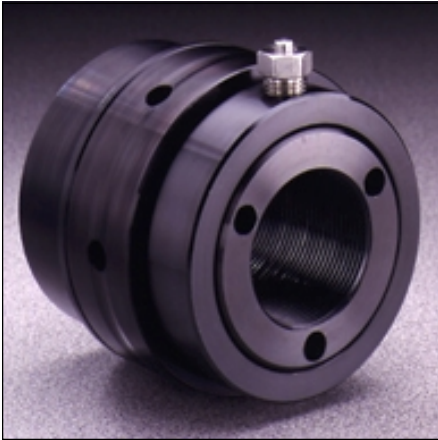


# RIVERHAWK COMPANY

ENGINEERING-DRIVEN HYDRAULIC SHAFT TECHNOLOGIES



### **Hydraulic Nut**



### **Plug and Ring Gages**

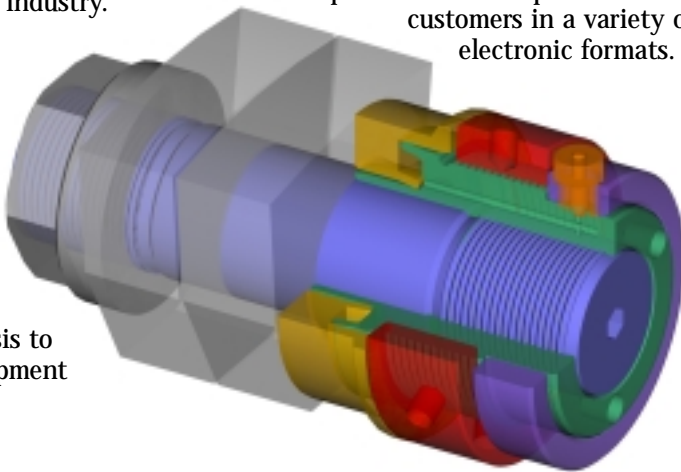


**Riverhawk Company, an engineering-driven manufacturer, specializes in hydraulic shaft joining technologies.**

### **Engineering Capabilities**

Tapping deep roots in the rotating machinery industry, our ample staff of experienced personnel designs, manufactures and tests equipment supplied to the top OEMs (original equipment manufacturers) and end-users in the industry.

Linked in a Windows NT environment, Riverhawk engineers work as a team, using finite element analysis to design equipment



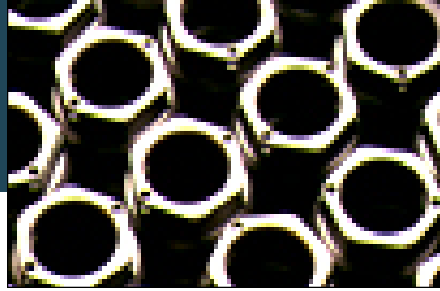
and confirm stress and/or deflection patterns. We have both linear and non-linear stress analysis capabilities. We can also "build" two-dimensional axisymmetric models for essentially cylindrical components or three-dimensional solid models for more complex part configurations.

The output of our design stations – a multi-colored graphic representation of the part under investigation – clearly shows the loading and the resulting stress and/or deflection patterns. We can provide this data to customers in a variety of electronic formats.

All of our products are tested by Riverhawk employees using in-house test facilities or a certified laboratory. Customers are assured of performance and durability.



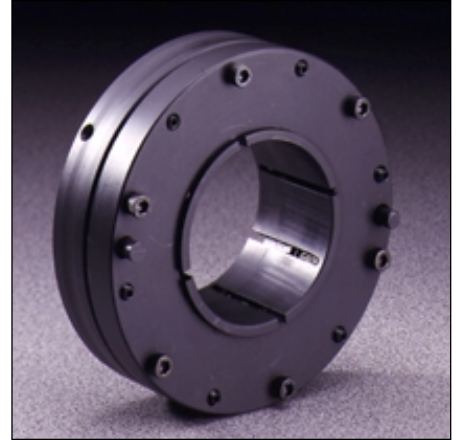
**Engineered Studs and Nuts**



**Pusher Piston**



**Hydraulic Torque Coupler**



**Product Manufacturing**

We meet the daily challenges of the rotating equipment industry by offering auxiliary equipment such as air-driven and manual hydraulic pressure kits and pusher piston cylinders for the installation of coupling hubs, thrust discs and compressor wheels. We also design and manufacture hydraulically tensioned studs and nuts, tensioning tools, hydraulic nuts, hydraulic couplers, air and hydraulic pressure kits, pushers, and plug and ring gages.

All of our turning centers and milling centers are state-of-the-art Computer Numerically Controlled equipment. We also offer grinding of inner and outer diameters to precise specifications.

Using the best and most up-to-date equipment, we manufacture to exacting tolerances. For example, our ring and plug gages have a taper and roundness accuracy of +/- 0.000050 per inch and result in a surface contact of 90 percent or better.

**Customer-focused Service**

We offer precision weight matching, calibration and protected storage of shaft end gages. We also provide instruction manuals, training seminars on equipment installation and maintenance. Contact us with your source inspections requirements. What's more, to decrease costly downtime, we offer expedited delivery on any product shipment.



**Hydraulic Tensioning Tools**



**Hydraulic Pressure Kit**



# RIVERHAWK PRODUCTS AND SERVICES



**Hydraulic Pressure Kits** - Two integrated hydraulic pumps and gages, pressure tested to full capacity, provide a lightweight, easy-to-carry unit capable of both high (35,000 psi) and low (10,000 psi) pressure conditions.

**Air Driven Hydraulic Kits** - Easy-to-operate units provide instant and reliable hydraulic power using an input air supply of 80 psi to 120 psi.

**Hydraulic Tensioner Nuts** - Precision tension applied hydraulically to casings, flanges, bearing housings or connecting rods - lowering costs for parts and labor and providing the best choice for high-temperature applications.

**Hydraulic Torque Couplers** - Infinitely adjustable hydraulic coupler with slip-fit components provides ultra-secure clamping of shaft elements while allowing a reduction in shaft diameter and design complexity.

**Pusher Pistons** - Reliable and customizable to match any machine shaft ends with full stroke to accommodate full pull-up of the coupling hub onto the shaft.

**Plug and Ring Gages** - Designed to match any machine shaft end. Our gages are shipped with taper contact of 90 to 95 percent.

**Stud Tensioning Tools** - Individually designed and hydraulically operated to provide controllable and accurate pre-loads of bolts and nuts for reliability and ease of installation and removal.

**Engineered Studs and Nuts** - Uniquely engineered with finite element analysis (FEA) and precision-machined for applications requiring strength and resistance to fatigue, temperature and corrosion.

**Training Seminars** - Offered in-house or off-site on a variety of topics focused on the installation and operation of Riverhawk products.

**Source Inspections** - Available off-site for those customers who cannot perform this function at a third-party facility.

**Field Service** - Our experienced field service engineers will work with your field personnel to maximize the use of our equipment to increase productivity at the job site.

---

A Mission of Desire - Every product Riverhawk makes will raise the standard for each and every product which follows. We will be the quality standard by which the rotating equipment industry measures products and services. We will accomplish this by using dedicated, highly technically trained staff, the best machinery, and the finest raw material.

We will do this not by policy decree but by personal desire to excel.

---

For more information about any Riverhawk product or service, call us at 315-768-4855.



215 Clinton Road, New Hartford, New York 13413  
Phone: 315-768-4855 Fax: 315-768-4941  
info@riverhawk.com <http://www.riverhawk.com>