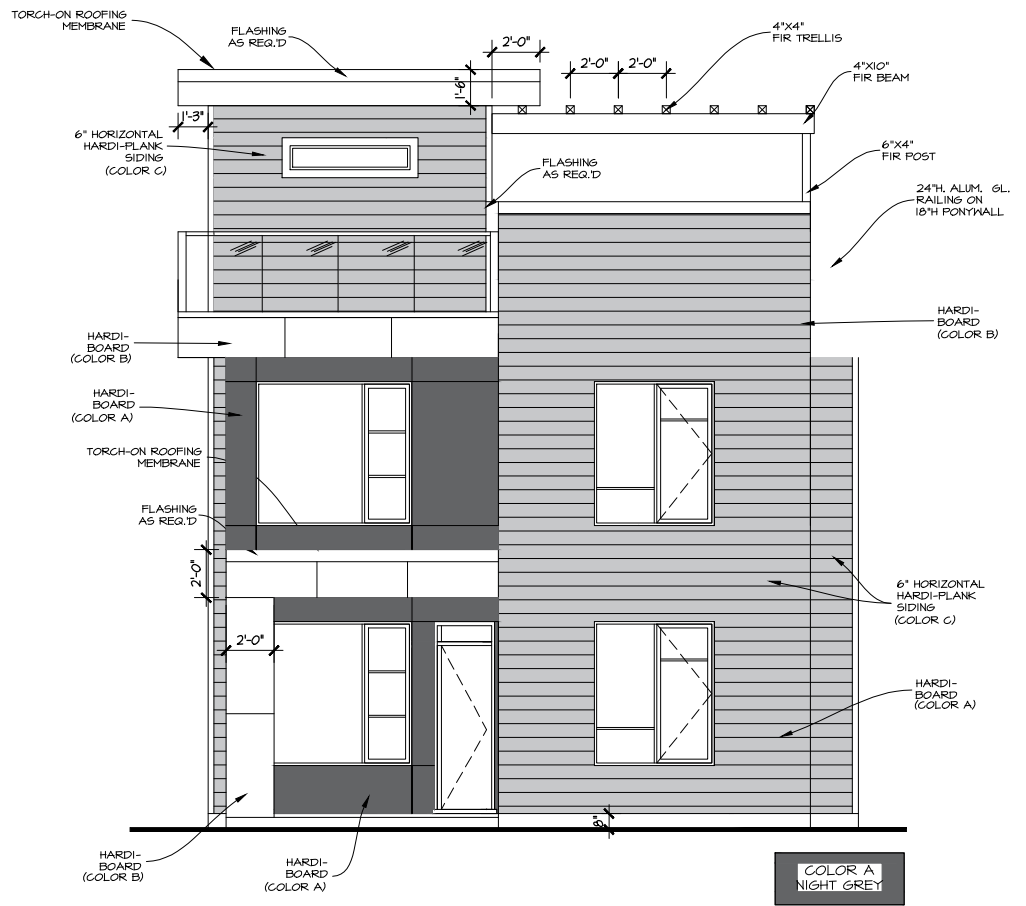


FRONT ELEVATION
(UNIT# 2)

- COLOR A
NIGHT GREY
- COLOR B
ARCTIC WHITE
- COLOR D
RIVER ROCK



FRONT ELEVATION
(UNIT# 1)

- COLOR A
NIGHT GREY
- COLOR B
ARCTIC WHITE
- COLOR C
CASCADE SLATE

PARTY