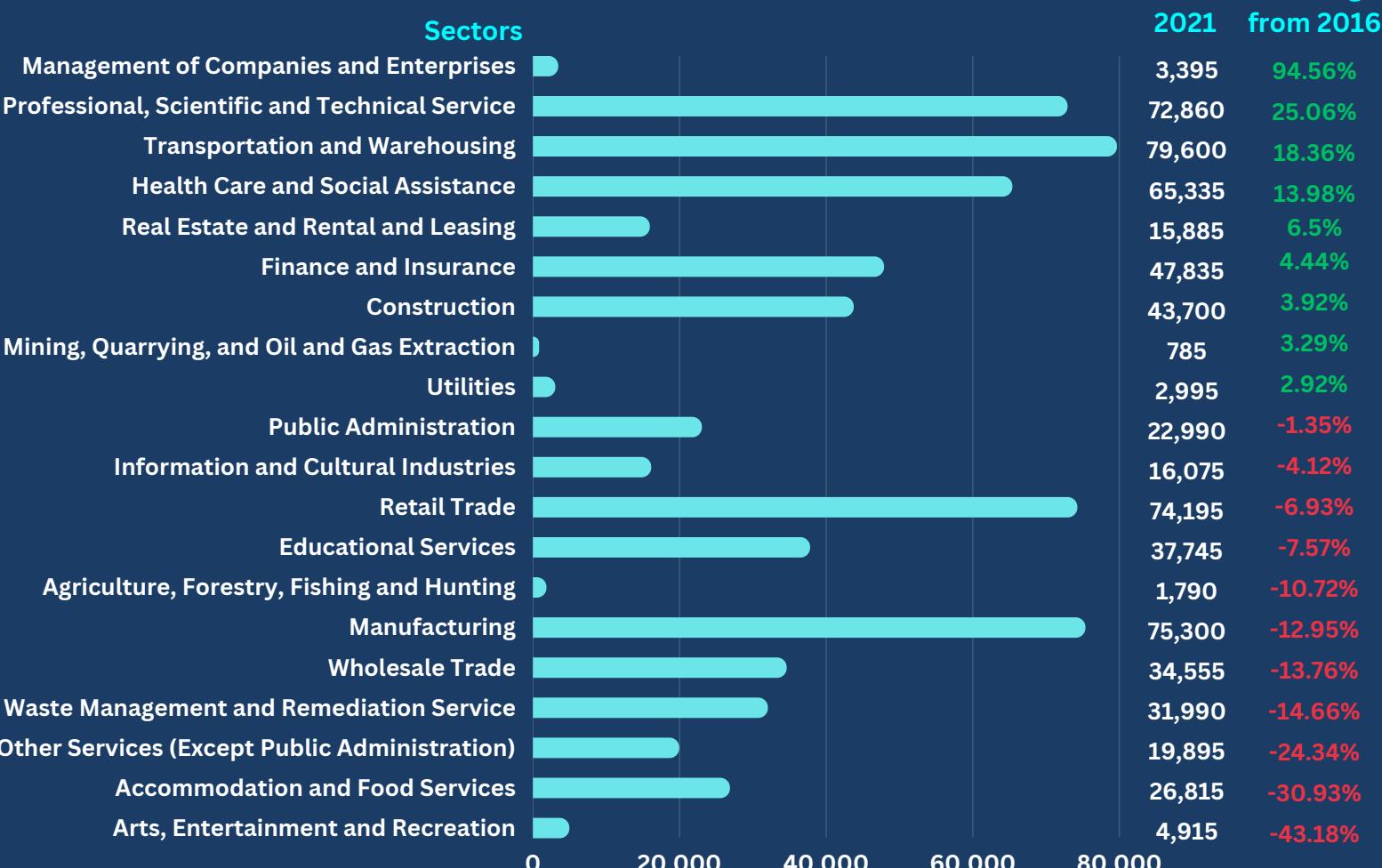




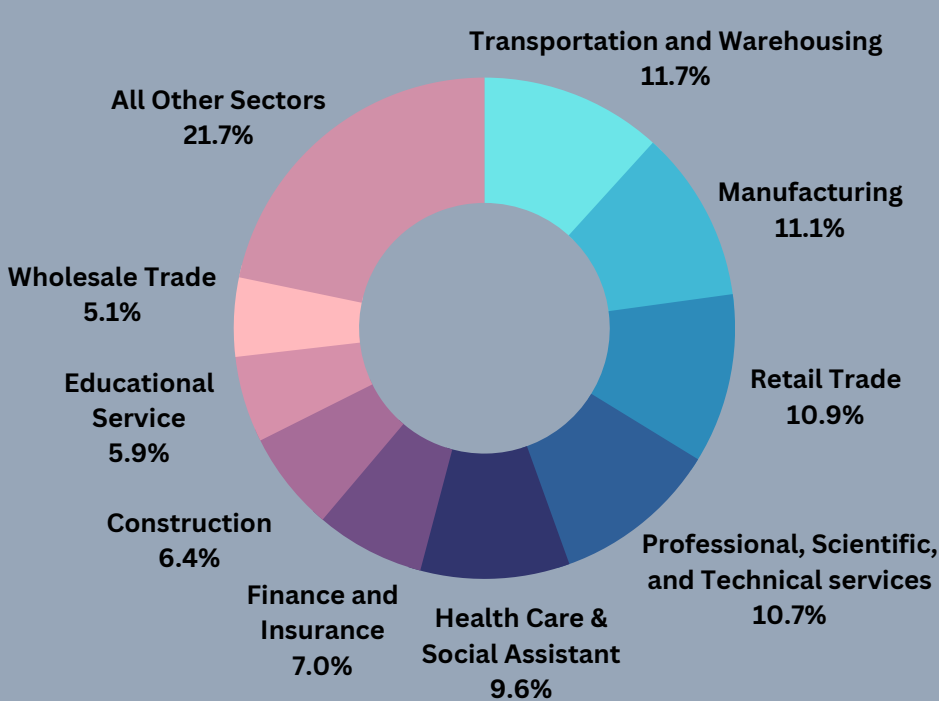
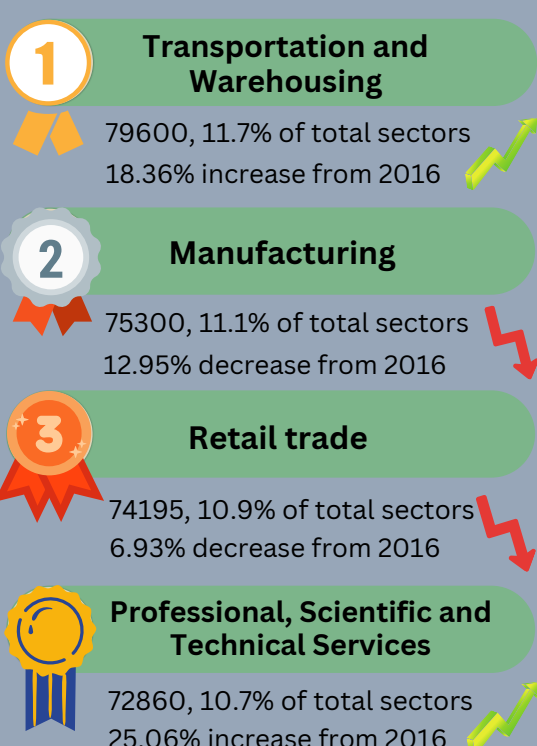
Total 678,660
People Employed in Peel

1.85%
Change from 2016

EMPLOYMENT BY SECTOR IN 2021 & % CHANGE FROM 2016



TOP EMPLOYMENT SECTORS IN PEEL



JOB DISTRIBUTION BY SECTOR

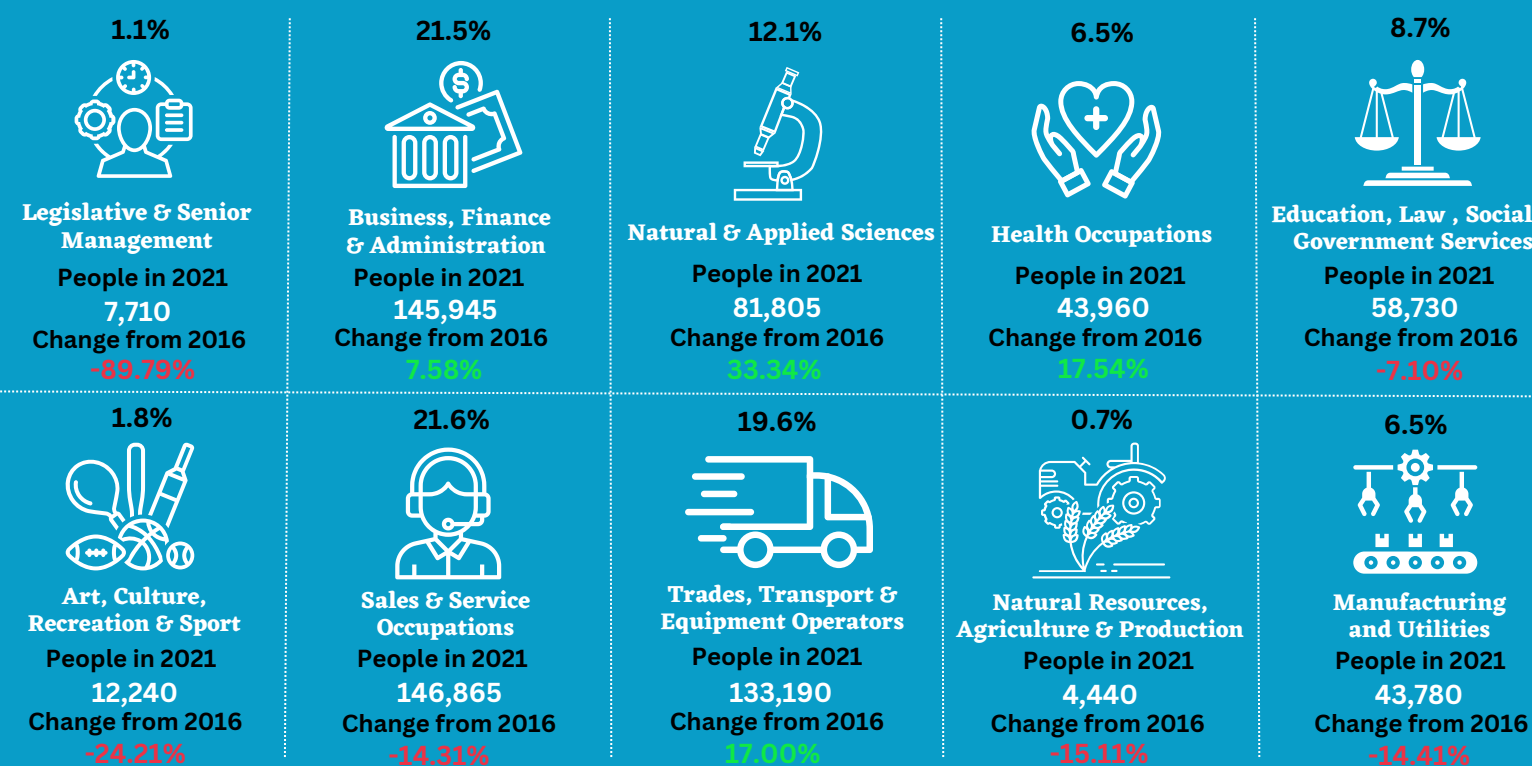
PEEL ALL SECTORS 100%	Ontario ALL SECTORS 100%
11.7%	5.3%
11.1%	9.3%
10.9%	10.5%
10.7%	9.9%
9.6%	12.6%
7.0%	5.9%
6.4%	7.5%
5.6%	7.5%
5.1%	3.5%
4.7%	4.3%
4.0%	4.5%
3.4%	6.4%
2.9%	3.5%
2.4%	2.4%
2.3%	2.2%
0.7%	1.3%
0.5%	0.4%
0.4%	0.8%
0.3%	1.5%
0.1%	0.5%

EDUCATION OF THE WORKFORCE

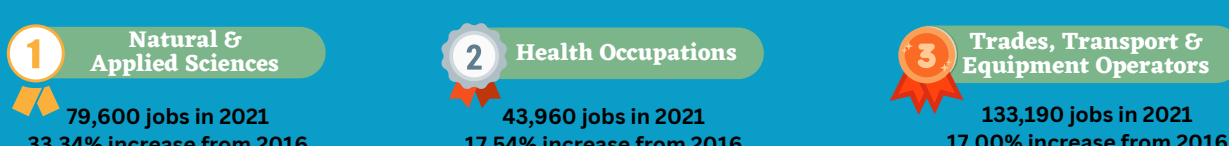
Percentage of the population aged 25-64 years with selected highest levels of educational attainment

Education Level	2021	2016	Change
Bachelor's Degree or Higher	42.4%	36.1%	6.3%
University Certificate Below Bachelor Level	3.3%	2.9%	0.4%
College, CEGEP or Other Non-University Diploma	19.3%	21.2%	-1.9%
Secondary School Diploma	22.4%	24.3%	-1.9%
Apprenticeship or Trades Certificate or Diploma	3.9%	4.9%	-1.0%
No Certificate, Diploma or Degree	8.7%	10.6%	-1.9%

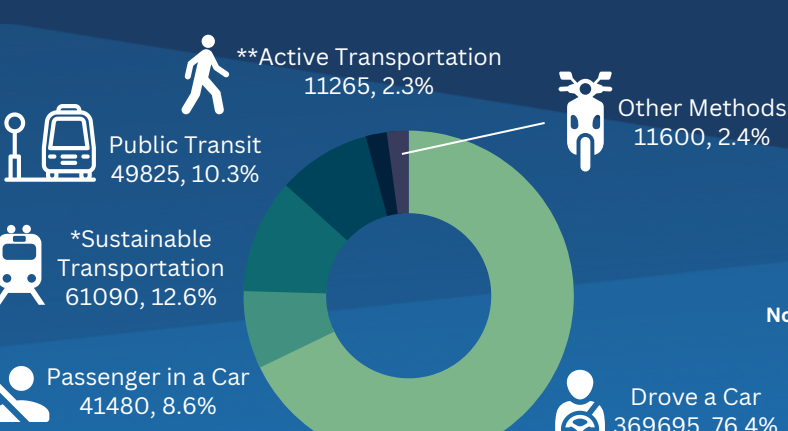
2021 EMPLOYMENT BY OCCUPATIONS IN PEEL



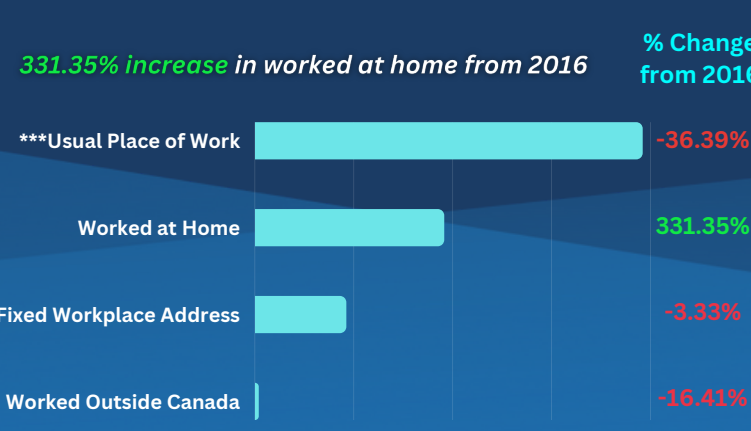
GROWTH AREAS IN OCCUPATIONS



COMMUTING— HOW PEOPLE GET TO WORK IN 2021



PLACE OF WORK— WHERE DID PEOPLE WORK FROM IN 2021



*Traditionally includes public transit, carpooling
** Walking and cycling

***Someone who is working at a specific fixed address